

IULTCS

Voting begins on:
2015-10-22

Voting terminates on:
2015-12-22

Leather — Physical and mechanical tests — Determination of the static absorption of water

Cuir — Essais physiques et mécaniques — Détermination de l'absorption statique d'eau

iTeh STANDARD PREVIEW
(standards.iteh.ai)
Full standard:
<https://standards.iteh.ai/catalog/standards/sist/4bdec24e-13b8-4661-ab25-abebb2b7d615/iso-2417-2016>

Please see the administrative notes on page iii

RECIPIENTS OF THIS DRAFT ARE INVITED TO SUBMIT, WITH THEIR COMMENTS, NOTIFICATION OF ANY RELEVANT PATENT RIGHTS OF WHICH THEY ARE AWARE AND TO PROVIDE SUPPORTING DOCUMENTATION.

IN ADDITION TO THEIR EVALUATION AS BEING ACCEPTABLE FOR INDUSTRIAL, TECHNOLOGICAL, COMMERCIAL AND USER PURPOSES, DRAFT INTERNATIONAL STANDARDS MAY ON OCCASION HAVE TO BE CONSIDERED IN THE LIGHT OF THEIR POTENTIAL TO BECOME STANDARDS TO WHICH REFERENCE MAY BE MADE IN NATIONAL REGULATIONS.



Reference numbers
ISO/FDIS 2417:2015(E)
IUP 7:2015(E)

ISO/CEN PARALLEL PROCESSING

This final draft has been developed within the International Organization for Standardization (ISO), and processed under the **ISO-lead** mode of collaboration as defined in the Vienna Agreement. The final draft was established on the basis of comments received during a parallel enquiry on the draft.

This final draft is hereby submitted to the ISO member bodies and to the CEN member bodies for a parallel two-month approval vote in ISO and formal vote in CEN.

Positive votes shall not be accompanied by comments.

Negative votes shall be accompanied by the relevant technical reasons.

iTeh STANDARD PREVIEW
(standards.iteh.ai)
Full standard:
<https://standards.iteh.ai/catalog/standards/sist/4bdee23e-13b8-4661-ab25-abebb2b7d615/iso-2417-2016>



COPYRIGHT PROTECTED DOCUMENT

© ISO 2015, Published in Switzerland

All rights reserved. Unless otherwise specified, no part of this publication may be reproduced or utilized otherwise in any form or by any means, electronic or mechanical, including photocopying, or posting on the internet or an intranet, without prior written permission. Permission can be requested from either ISO at the address below or ISO's member body in the country of the requester.

ISO copyright office
Ch. de Blandonnet 8 • CP 401
CH-1214 Vernier, Geneva, Switzerland
Tel. +41 22 749 01 11
Fax +41 22 749 09 47
copyright@iso.org
www.iso.org

Contents

| | Page |
|--|----------|
| Foreword | iv |
| 1 Scope | 1 |
| 2 Normative references | 1 |
| 3 Principle | 1 |
| 4 Apparatus | 1 |
| 5 Sampling and sample preparation | 2 |
| 6 Procedure | 2 |
| 7 Expression of results | 3 |
| 8 Test report | 3 |

iTeh STANDARD PREVIEW
(standards.iteh.ai)

Full standard:
<https://standards.iteh.ai/catalog/standards/sist/4bdee23e-13b8-4661-ab25-abebb2b7d615/iso-2417-2016>

Foreword

ISO (the International Organization for Standardization) is a worldwide federation of national standards bodies (ISO member bodies). The work of preparing International Standards is normally carried out through ISO technical committees. Each member body interested in a subject for which a technical committee has been established has the right to be represented on that committee. International organizations, governmental and non-governmental, in liaison with ISO, also take part in the work. ISO collaborates closely with the International Electrotechnical Commission (IEC) on all matters of electrotechnical standardization.

The procedures used to develop this document and those intended for its further maintenance are described in the ISO/IEC Directives, Part 1. In particular the different approval criteria needed for the different types of ISO documents should be noted. This document was drafted in accordance with the editorial rules of the ISO/IEC Directives, Part 2 (see www.iso.org/directives).

Attention is drawn to the possibility that some of the elements of this document may be the subject of patent rights. ISO shall not be held responsible for identifying any or all such patent rights. Details of any patent rights identified during the development of the document will be in the Introduction and/or on the ISO list of patent declarations received (see www.iso.org/patents).

Any trade name used in this document is information given for the convenience of users and does not constitute an endorsement.

For an explanation on the meaning of ISO specific terms and expressions related to conformity assessment, as well as information about ISO's adherence to the WTO principles in the Technical Barriers to Trade (TBT) see the following URL: [Foreword - Supplementary information](#)

ISO 2417 was prepared by the Physical Test Commission of the International Union of Leather Technologists and Chemists Societies (IUP Commission, IULTCS) in collaboration with the European Committee for Standardization (CEN) Technical Committee CEN/TC 289, *Leather*, the secretariat of which is held by UNI, in accordance with the Agreement on technical cooperation between ISO and CEN (Vienna Agreement).

It is based on IUP 7 originally published in *J. Soc. Leather Trades Chemists* **44**, p. 367, (1960) and declared an official method of the IULTCS in 1961. This updated version was published in *J. Soc. Leather Tech. Chem.* **84**, p. 323, (2000) and reconfirmed as an official method in March 2001. The same principle is used but the text has been updated and includes the number of test pieces to be taken.

IULTCS, originally formed in 1897, is a world-wide organization of professional leather societies to further the advancement of leather science and technology. IULTCS has three Commissions, which are responsible for establishing international methods for the sampling and testing of leather. ISO recognizes IULTCS as an international standardizing body for the preparation of test methods for leather.

This third edition cancels and replaces the second edition (ISO 2417:2002), of which it constitutes a minor revision to align item c) of Clause 8 with ISO 2419:2012.

Leather — Physical and mechanical tests — Determination of the static absorption of water

1 Scope

This International Standard specifies a method for determining the water absorption of leather under static conditions. The method is applicable to all leather, particularly heavy leather.

2 Normative references

The following documents, in whole or in part, are normatively referenced in this document and are indispensable for its application. For dated references, only the edition cited applies. For undated references, the latest edition of the referenced document (including any amendments) applies.

ISO 2418, *Leather — Chemical, physical and mechanical and fastness tests — Sampling location*

ISO 2419, *Leather — Physical and mechanical tests — Sample preparation and conditioning*

ISO 2420, *Leather — Physical and mechanical tests — Determination of apparent density*

ISO 3696, *Water for analytical laboratory use — Specification and test methods*

3 Principle

A test piece of known mass or volume is immersed in water for a known period of time and the volume of water absorbed measured.

4 Apparatus

4.1 Glass Kubelka apparatus, as shown in [Figure 1](#). The graduated scale shall be readable to 0,1 ml with an accuracy of $\pm 0,1$ ml. The total volume of the bulb (A) and the graduated tube shall be 75 ml \pm 2 ml.

4.2 Rubber stopper (C), fitted with a glass rod or a nickel or stainless steel wire of diameter about 1 mm and of sufficient length to keep the test piece at the end of the cylinder (B) distant from the stopper (C).

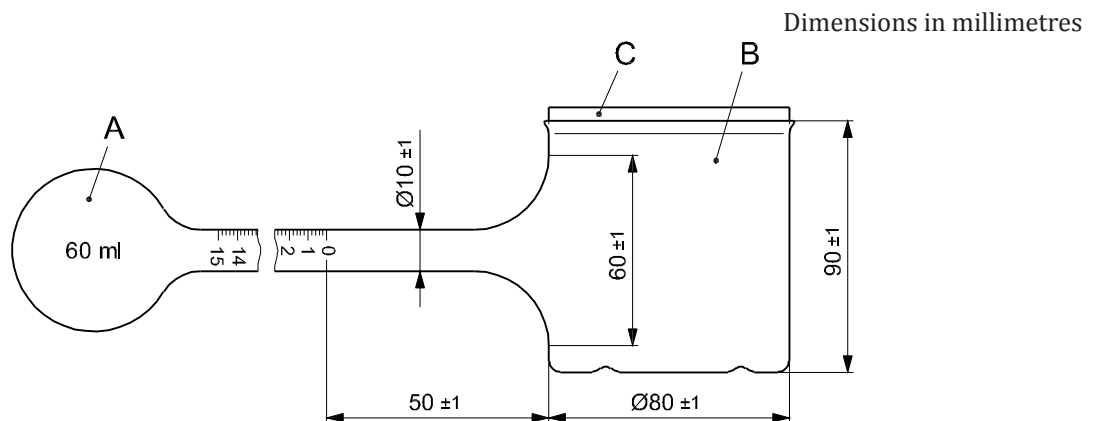


Figure 1 — Kubelka apparatus and stopper

4.3 Press knife, the inner wall of which is a right angled circular cylinder of diameter 70 mm \pm 1 mm as specified in ISO 2419.

4.4 Balance, reading to 0,001 g.

4.5 Distilled or de-ionised water, conforming to the requirements of grade 3 of ISO 3696.

5 Sampling and sample preparation

5.1 Sample in accordance with ISO 2418. From the sample, cut three test pieces by applying the press knife (4.3) to the grain surface. Condition the test pieces in accordance with ISO 2419.

If there is a requirement for more than two hides or skins to be tested in one batch, then only one sample need be taken from each hide or skin, provided that the overall total is not less than three test pieces.

5.2 Weigh the test piece to the nearest 0,001 g or determine its volume in accordance with ISO 2420.

5.3 Carry out all further operations at a temperature of 20 °C \pm 2 °C or 23 °C \pm 2 °C. There is no further need for humidity control.

6 Procedure

6.1 Ensure that the Kubelka apparatus (4.1) is clean and free of grease. Wet the interior surfaces with distilled or de-ionized water (4.5) and pour out the excess.

6.2 Place the apparatus with the bulb (A) directly below the cylinder (B) and fill with sufficient distilled or de-ionized water (4.5) at 20 °C \pm 2 °C or 23 °C \pm 2 °C to give a water level between 0 ml and 1 ml on the graduated scale. Record the scale reading.

6.3 Place the test piece in the cylinder (B) and pour the water from the bulb (A) into the cylinder. Close the cylinder with the stopper (C) to prevent evaporation losses and place the apparatus on a level surface.

6.4 After the test piece has been immersed for a specific time (see Note 1 to 6.5) turn the apparatus so that the water drains into the bulb. One min after drainage, note the scale reading at the water level and calculate the volume of water absorbed.

6.5 If the water absorption is required at other time intervals, turn the apparatus immediately so that the water flows back into the cylinder (B) and again covers the test piece. Repeat the operation in 6.4.

NOTE 1 For most purposes, measurements after two periods of immersion are sufficient. If possible, the periods are taken from the following, 15 min \pm 0,2 min; 30 min \pm 0,2 min; 60 min \pm 0,5 min; 120 min \pm 0,5 min; 24 h \pm 0,1 h.

NOTE 2 The periods of 1 min during which the water is being drained back are not to be considered as part of periods of immersion which precede them, but are considered as parts of subsequent periods of immersion. For example, if the water absorptions during periods of immersion of 15 min and 60 min are to be measured on the same test piece, and the instant of first immersion is at time zero, subsequent actions will be as follows:

- at 15 min, begin draining,
- at 16 min, read off the residual volume and immediately re-immerses the test piece,
- at 60 min, begin draining,
- at 61 min, read off the residual volume.

7 Expression of results

Calculate the water absorption, Q , (%V/m) in millilitres per 100 g, using Formula (1); or calculate the water absorption, P , (%V/V) in millilitres per 100 ml, using Formula (2).

$$Q = \frac{V_1}{m} \times 100 \quad (1)$$

$$P = \frac{V_1}{V_2} \times 100 \quad (2)$$

where

V_1 is the volume of water absorbed in millilitres as determined in 6.4;

V_2 is the volume of the test piece in millilitres as determined in 5.2 (see Note);

m is the mass of the test piece in grams as determined in 5.2.

NOTE ISO 2420 determines the volume in cubic millimetres. Thus it is divided by 1 000 to give the correct value of V_2 in millilitres.

8 Test report

The test report shall include the following:

- a) a reference to this International Standard, i.e. ISO 2417;
- b) the mean water absorption (in millilitres per 100 g, Q , or in millilitres per 100 ml, P) for each period of immersion;
- c) the standard atmosphere used for conditioning and testing as given in ISO 2419;
- d) any deviations from the method specified in this International Standard;
- e) full details for identification of the sample and any deviation from ISO 2418 with respect to sampling.

iTeh STANDARD PREVIEW
(standards.iteh.ai)

Full standard:
<https://standards.iteh.ai/catalog/standards/sist/4bdee23e-13b8-4661-ab25-abebb2b7d615/iso-2417-2016>