
**Tools for pressing — Gas springs —
Part 2:
Specification of accessories**

*Outils de presse — Ressorts à gaz —
Partie 2: Spécifications des accessoires*

**iTeh STANDARD PREVIEW
(standards.iteh.ai)**

[ISO 11901-2:2018](https://standards.iteh.ai/catalog/standards/sist/e0091fd0-4038-475e-bdfc-27e4d653f4eb/iso-11901-2-2018)

<https://standards.iteh.ai/catalog/standards/sist/e0091fd0-4038-475e-bdfc-27e4d653f4eb/iso-11901-2-2018>



iTeh STANDARD PREVIEW
(standards.iteh.ai)

ISO 11901-2:2018

<https://standards.iteh.ai/catalog/standards/sist/e0091fd0-4038-475e-bdfc-27e4d653f4eb/iso-11901-2-2018>



COPYRIGHT PROTECTED DOCUMENT

© ISO 2018

All rights reserved. Unless otherwise specified, or required in the context of its implementation, no part of this publication may be reproduced or utilized otherwise in any form or by any means, electronic or mechanical, including photocopying, or posting on the internet or an intranet, without prior written permission. Permission can be requested from either ISO at the address below or ISO's member body in the country of the requester.

ISO copyright office
CP 401 • Ch. de Blandonnet 8
CH-1214 Vernier, Geneva
Phone: +41 22 749 01 11
Fax: +41 22 749 09 47
Email: copyright@iso.org
Website: www.iso.org

Published in Switzerland

Contents

	Page
Foreword	iv
1 Scope	1
2 Normative references	1
3 Terms and definitions	1
4 Dimensions	1
4.1 General	1
4.2 Type A — Mounting base plates	1
4.2.1 Type A1 — Mounting base plates with two holes to clamp the gas spring	1
4.2.2 Type A2 — Mounting base plates with four holes to clamp the gas spring	2
4.3 Type B — Two-part mounting clamps	3
4.4 Type C — Flange mounts	5
4.4.1 Type C1 — Cylindrical flange mounts	5
4.4.2 Type C2 — Square flange mounts	5
4.4.3 Mounting of the flange mounts types C1 and C2 on gas spring	6
4.5 Type D — Front end supports	7
4.5.1 Type D1	7
4.5.2 Type D2	9
4.6 Type E — Rectangular flange mounts	10
5 Material	10
6 Designation	11
Bibliography	12

<https://standards.iteh.ai/catalog/standards/sist/e0091fd0-4038-475e-bdfc-27e4d653f4eb/iso-11901-2-2018>
 iTeh STANDARD PREVIEW
 (standards.iteh.ai)

Foreword

ISO (the International Organization for Standardization) is a worldwide federation of national standards bodies (ISO member bodies). The work of preparing International Standards is normally carried out through ISO technical committees. Each member body interested in a subject for which a technical committee has been established has the right to be represented on that committee. International organizations, governmental and non-governmental, in liaison with ISO, also take part in the work. ISO collaborates closely with the International Electrotechnical Commission (IEC) on all matters of electrotechnical standardization.

The procedures used to develop this document and those intended for its further maintenance are described in the ISO/IEC Directives, Part 1. In particular, the different approval criteria needed for the different types of ISO documents should be noted. This document was drafted in accordance with the editorial rules of the ISO/IEC Directives, Part 2 (see www.iso.org/directives).

Attention is drawn to the possibility that some of the elements of this document may be the subject of patent rights. ISO shall not be held responsible for identifying any or all such patent rights. Details of any patent rights identified during the development of the document will be in the Introduction and/or on the ISO list of patent declarations received (see www.iso.org/patents).

Any trade name used in this document is information given for the convenience of users and does not constitute an endorsement.

For an explanation of the voluntary nature of standards, the meaning of ISO specific terms and expressions related to conformity assessment, as well as information about ISO's adherence to the World Trade Organization (WTO) principles in the Technical Barriers to Trade (TBT) see www.iso.org/iso/foreword.html.

This document was prepared by Technical Committee ISO/TC 29, *Small tools*, Subcommittee SC 8, *Tools for pressing and moulding*.

Any feedback or questions on this document should be directed to the user's national standards body. A complete listing of these bodies can be found at www.iso.org/members.html.

This third edition cancels and replaces the second edition (ISO 11901-2:2004), which has been technically revised. The main changes compared to the previous edition are as follows:

- addition of accessories for gas spring according to ISO 11901-3 and ISO 11901-4;
- change of the designation of accessories.

A list of all parts in the ISO 11901 series can be found on the ISO website.

Tools for pressing — Gas springs —

Part 2: Specification of accessories

1 Scope

This document specifies the dimensions in millimetres, of mounting base plates, of two-part mounting clamps, of flange mounts and front end supports intended for use in press tool together with gas springs in accordance with ISO 11901-1, ISO 11901-3 and ISO 11901-4.

It also gives information concerning materials and specifies the designation of the mounting accessories in accordance with this document.

2 Normative references

The following documents are referred to in the text in such a way that some or all of their content constitutes requirements of this document. For dated references, only the edition cited applies. For undated references, the latest edition of the referenced document (including any amendments) applies.

ISO 630-1, *Structural steels — Part 1: General technical delivery conditions for hot-rolled products*

ISO 2768-1, *General tolerances — Part 1: Tolerances for linear and angular dimensions without individual tolerance indications*

ISO 11901-2:2018
<https://standards.iteh.ai/catalog/standards/sist/e0091fd0-4038-475e-bdfc-27e4d653f4eb/iso-11901-2-2018>

3 Terms and definitions

No terms and definition are listed in this document

ISO and IEC maintain terminological databases for use in standardization at the following addresses:

- ISO Online browsing platform: available at <https://www.iso.org/obp>
- IEC Electropedia: available at <http://www.electropedia.org/>

4 Dimensions

4.1 General

All dimensions are indicated in millimetres.

In [Figures 1](#) to [9](#), general tolerances shall be class m in accordance with ISO 2768-1.

4.2 Type A — Mounting base plates

4.2.1 Type A1 — Mounting base plates with two holes to clamp the gas spring

Mounting base plates with two holes to clamp the gas spring of type A1 shall conform to the indications of [Figure 1](#) and [Table 1](#).

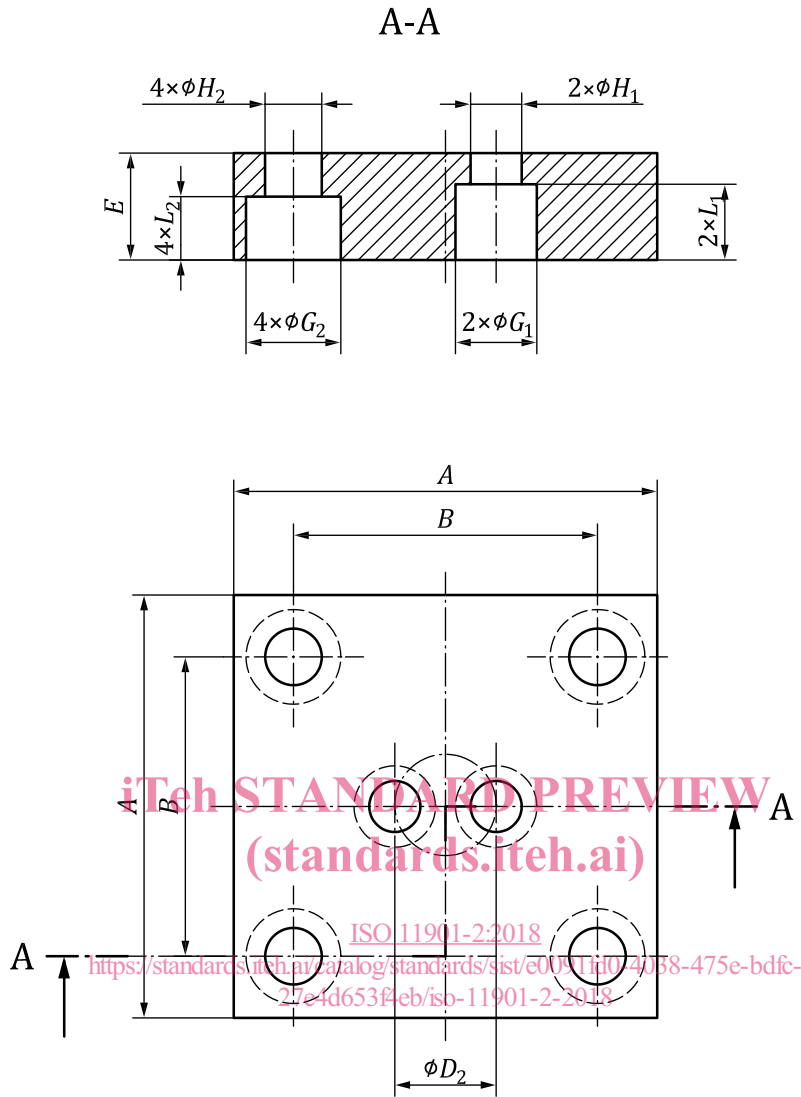


Figure 1 — Mounting base plates - Type A1

Table 1 — Dimensions of mounting base plates - Type A1

Mount for gas spring cylinder diameter $\pm 0,3$	A	B	D_2	E 0 -0,1	G_1	G_2	H_1	H_2	L_1	L_2
45	70	50	20	20	15	15	9	9	14	12
50	75	56,5	20	20	15	15	9	9	14	12
63	100	73,5	20	20	15	18	9	11	14	12

4.2.2 Type A2 — Mounting base plates with four holes to clamp the gas spring

Mounting base plates with four holes to clamp the gas spring of type A2 shall conform to the indications of Figure 2 and Table 2.

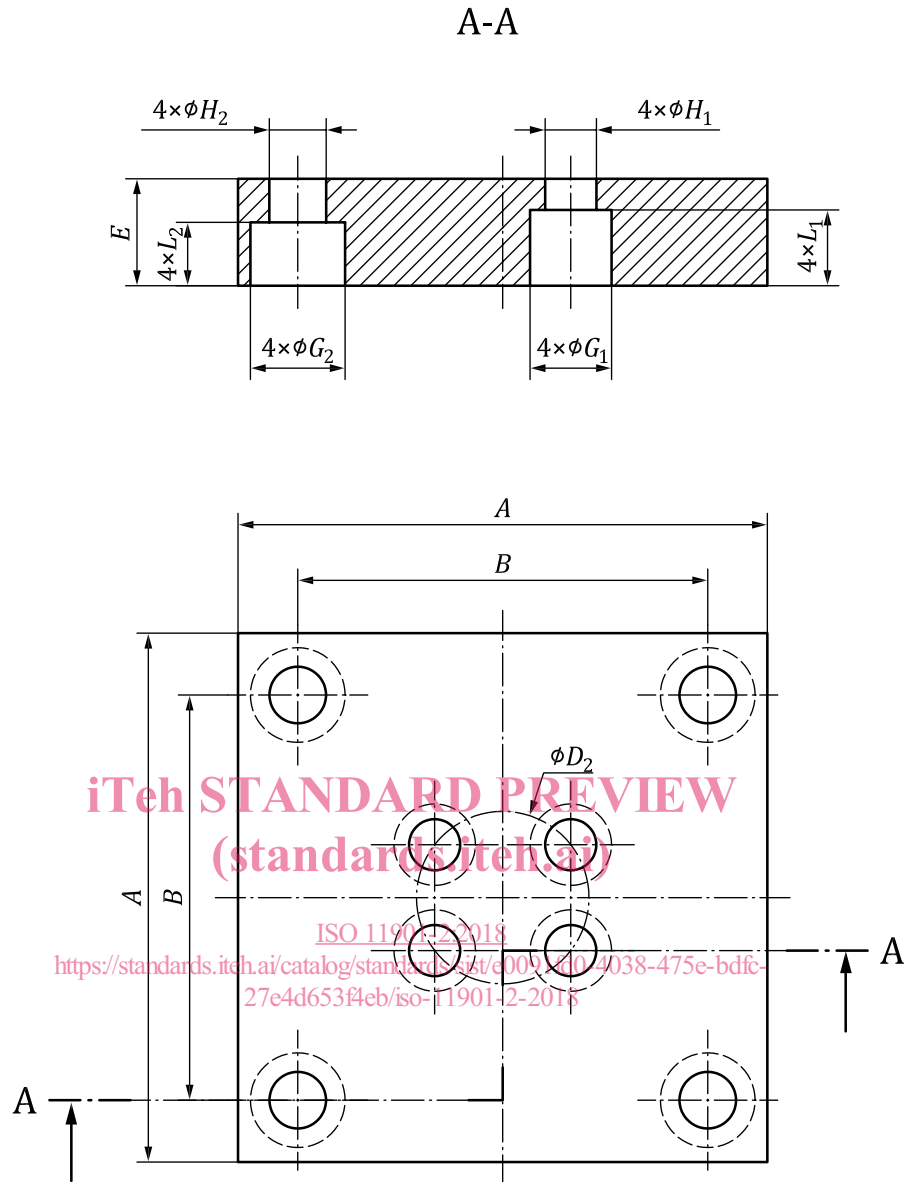


Figure 2 — Mounting base plates - Type A2

Table 2 — Dimensions of mounting base plates - Type A2

Mount for gas spring cylinder diameter $\pm 0,3$	A	B	D_2	E 0 -0,1	G_1	G_2	H_1	H_2	L_1	L_2
75	100	73,5	40	20	15	18	9	11	14	12
95	120	92	60	20	15	20	9	13,5	14	13
120	140	109,5	80	20	18	20	11	13,5	15	13
150	190	138	100	25	18	26	11	17,5	15	17
195	210	170	120	25	20	26	13,5	17,5	13	17

4.3 Type B — Two-part mounting clamps

Two-part mounting clamps of type B shall conform to the indications of [Figure 3](#) and [Table 3](#).

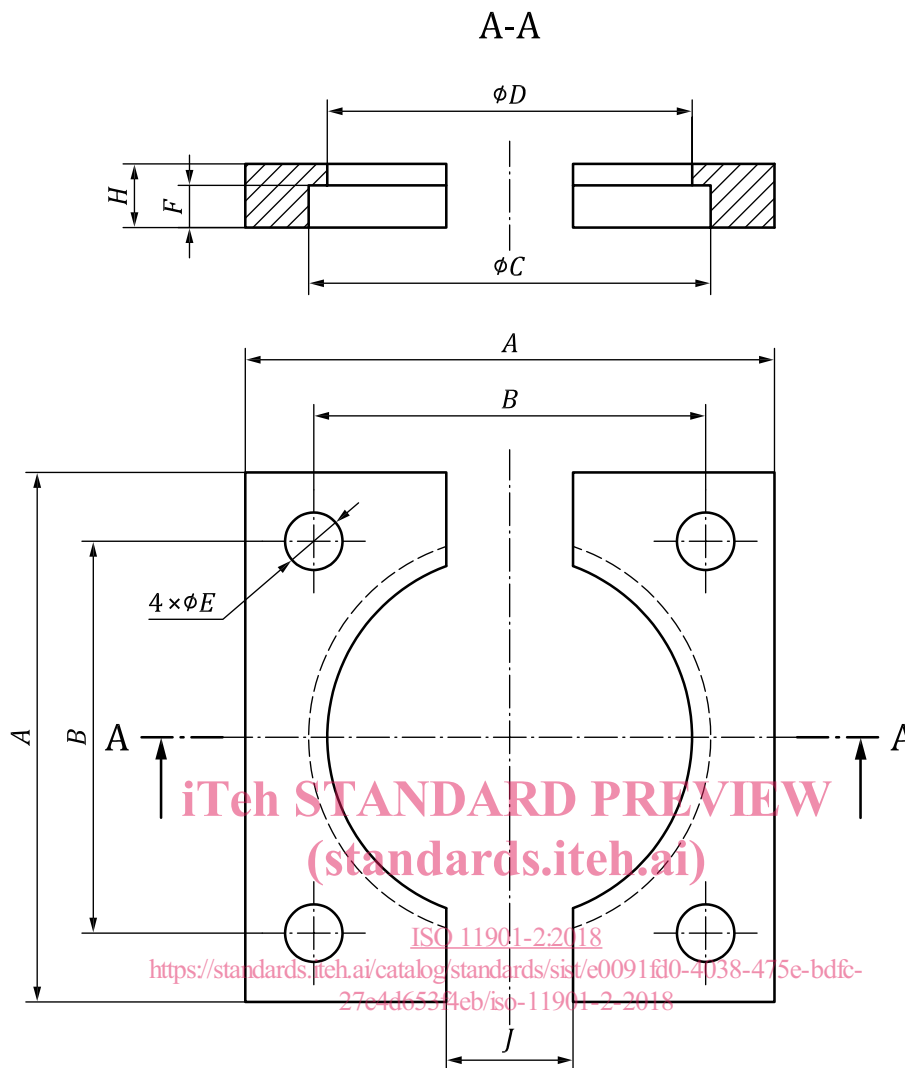


Figure 3 — Two-part mounting clamps - Type B

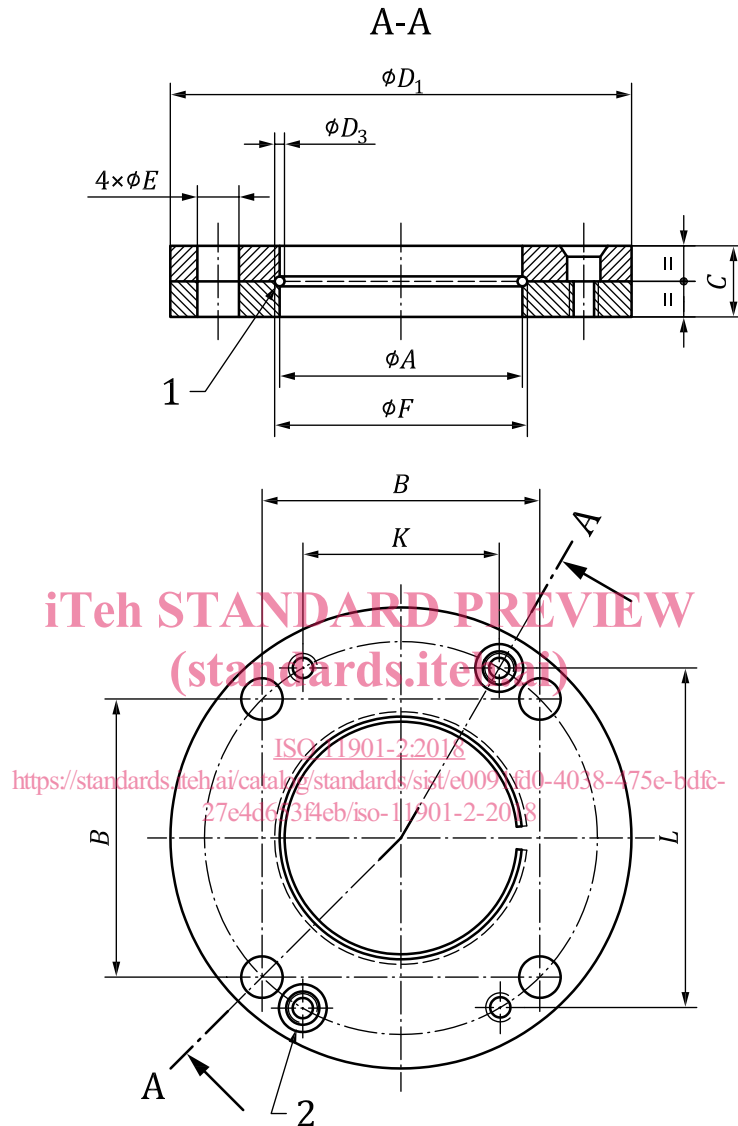
Table 3 — Dimensions of two-part mounting clamps - Type B

Mount for gas spring cylinder diameter $\pm 0,3$	A	B	C	D	E	F 0 -0,1	H 0 -0,1	J
32	50	35	32,5	28,5	6,6	4	7	12
38	55	40	38,5	34,5	6,6	4	7	12
45	70	50	45,5	40,5	9	4	7	20
50	75	56,5	50,5	44,5	9	8	12	24
63	100	73,5	64	57	11	8	12	24
75	100	73,5	75,5	68,5	11	8	12	24
95	120	92	95,5	88,5	13,5	8	12	24
120	140	109,5	120,5	113,5	13,5	8	12	24
150	190	138	150,5	143,5	17,5	8	12	24
195	210	170	195,5	188	17,5	8	13	24

4.4 Type C — Flange mounts

4.4.1 Type C1 — Cylindrical flange mounts

Cylindrical flange mounts of type C1 shall conform to the indications of [Figure 4](#) and [Table 4](#).



Key

- 1 plain ring
- 2 assembly screws

NOTE The two flange halves are held together with assembly screws.

Figure 4 — Cylindrical flange mounts - Type C1

4.4.2 Type C2 — Square flange mounts

Square flange mounts of type C2 shall conform to the indications of [Figure 5](#) and [Table 4](#).