



**SLOVENSKI STANDARD**  
**SIST EN 31:1998**  
**01-december-1998**

---

I a ]j Ub]\_]!'Df]\_`4 bY'a YfY

Pedestal wash basins - Connecting dimensions

Waschtische - Anschlußmaße

Lavabo - Cotes de raccordement

ITEH STANDARD PREVIEW  
(standards.iteh.ai)

Ta slovenski standard je istoveten z: EN 31:1977

[SIST EN 31:1998](https://standards.iteh.ai/catalog/standards/sist/df177ff-967c-406d-ba88-6428e55adabc/sist-en-31-1998)

<https://standards.iteh.ai/catalog/standards/sist/df177ff-967c-406d-ba88-6428e55adabc/sist-en-31-1998>

**ICS:**

91.140.70      Sanitarne naprave      Sanitary installations

**SIST EN 31:1998**

**en**

**iTeh STANDARD PREVIEW**  
**(standards.iteh.ai)**

[SIST EN 31:1998](#)

<https://standards.iteh.ai/catalog/standards/sist/dff177ff-967c-406d-ba88-6428e55adabc/sist-en-31-1998>

EUROPEAN STANDARD  
NORME EUROPEENNE  
EUROPÄISCHE NORM

**EN 31**

Edition 1.

February 1977

UDC : 696.143:645.681.4

Key words: Sanitary appliances, Wash basins, Connecting dimensions,  
Hole size.

English version

PEDESTAL WASH BASINS

CONNECTING DIMENSIONS

Lavabo  
Cotes de raccordement

Waschtische  
Anschlussmasse



REPUBLIKA SLOVENIJA  
MINISTRSTVO ZA ZNANOST IN TEHNOLOGIJO  
Urad RS za standardizacijo in meroslovje  
LJUBLJANA

SIST. EN 31

PREVZET PO METODI RAZGLASITVE

This European Standard was accepted by CEN on 1977-02-28. The CEN members are bound to adhere to the CEN Internal Regulations which specify under which conditions this European Standard has to be given, without any alteration, the status of a national standard.

Up-to-date lists and bibliographical references concerning such national standards may be obtained on application to the CEN Central Secretariat or to any CEN member.

This European Standard exists in three versions (English, French, German), recognized by CEN as equivalent. National versions in other languages rank as translations and in case of doubt shall be checked against one of the recognized versions.

CEN members are the national standards organizations of Austria, Belgium, Denmark, Finland, France, Germany, Ireland, Italy, Netherlands, Norway, Portugal, Spain, Sweden, Switzerland and United Kingdom.

**CEN**

EUROPEAN COMMITTEE FOR STANDARDIZATION  
Comité Européen de Normalisation  
Europäisches Komitee für Normung

Central Secretariat: 2, rue Bréderode, B-1000 Bruxelles.

B R I E F H I S T O R Y

This European Standard was drawn up by the Technical Committee CEN/TC 7 "Connecting dimensions of sanitary appliances";

the secretariat of which is held by UNI.

**iTeh STANDARD PREVIEW**

This European Standard was adopted by CEN on the strength of its acceptance by the following member countries :

Austria - Belgium - Finland - France - Germany - Italy -  
Netherlands - Norway - Spain - Sweden - Switzerland -  
United Kingdom.



1. **SCOPE AND FIELD OF APPLICATION**

The aim of this standard is to specify the connecting characteristics of wash basins, whatever the materials used in their manufacture. It does not refer to appliances of actual width of less than 530 mm or more than 750 mm.

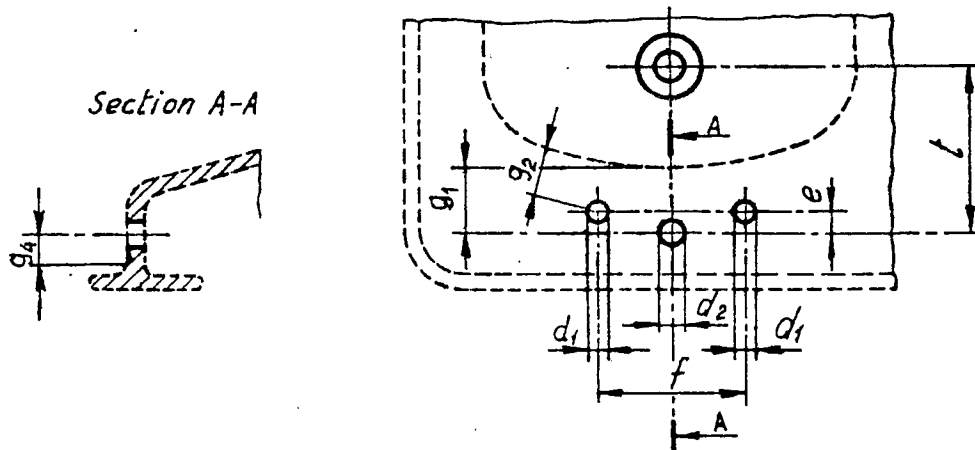
**NOTE**

Only dimensions are compulsory. The outline of the appliances in the diagrams is for illustration only, it in no way prejudices the final shape of the appliances which is left to the initiative of the manufacturers.

**iTeh STANDARD PREVIEW**  
**(standards.iteh.ai)**

SIST EN 31:1998

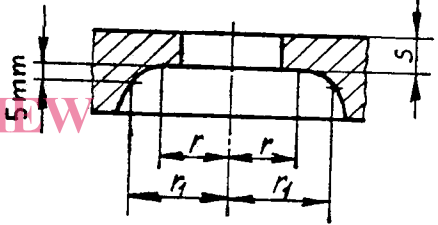
<https://standards.iteh.ai/catalog/standards/sist/dff177ff-967c-406d-ba88-6428e55adabc/sist-en-31-1998>

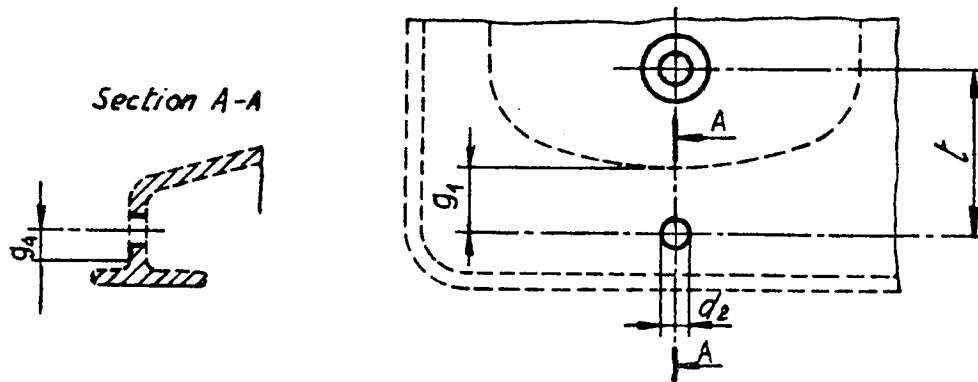
**2. CONNECTING DIMENSIONS****2.1. Wash basins for 3 hole fittings**

iTech STANDARD PREVIEW

(standards.iteh.ai) Definitions and comments

Dimension reference	Values in millimetres	Definitions and comments
$d_1$	$30 \begin{smallmatrix} +2 \\ 0 \end{smallmatrix}$	Diameter of external holes SIST EN 31:1998 <a href="https://standards.iteh.ai/catalog/standards/sist/en/177f-967c-406d-ba88-6428e55adabc/sist-en-31-1998">https://standards.iteh.ai/catalog/standards/sist/en/177f-967c-406d-ba88-6428e55adabc/sist-en-31-1998</a>
$d_2$	$35 \begin{smallmatrix} +2 \\ -1 \end{smallmatrix}$	Diameter of central hole
$e$	0 to 15	Distance from the centre line of the central hole in the vertical plane passing through the central line of the 2 outer holes
$f$	$200 \pm 4$	Distance between the centre lines of the 2 outer holes
$g_1$	$\geq 80$	Horizontal distance between the centre line of the the central hole and the edge of the bowl
$g_2$	$\geq 65$	The shortest horizontal distance between the centre line of an outer hole and the edge of the bowl
$g_4$	$\geq 32$	Width of the flat plane of the tap platform from the centre line of the tap hole to the back edge of the flat plane

Dimension reference	Values in millimetres	Definitions and comments	
r	$\geq 25$	Radius of a cylinder having the same centre line as the tap hole of a depth 0-5 mm from the lower plane of the tap hole	
r <sub>1</sub>	$\geq 30$	Radius of a cylinder having the same centre line as the tap hole of a depth of 5 mm min. from the lower plane of the tap hole	 <p>The diagram shows a cross-section of a tap hole in a plate. The hole has a depth of 5 mm. The drawing indicates several radii: r (radius of the hole), r<sub>1</sub> (radius of the hole at the bottom), r<sub>2</sub> (radius of the hole at the top), r<sub>3</sub> (radius of the hole at the top), and r<sub>4</sub> (radius of the hole at the top). The thickness of the tap platform is labeled as s.</p>
s	$\geq 18$	Thickness of the tap platform at the level of the zone concentric to the tap holes	<p>SIST EN 31:1998  <a href="https://standards.iteh.ai/catalog/standards/sist/dff177ff-9a7c-406d-ba88-6428e55adabc/sist-en-31-1998">https://standards.iteh.ai/catalog/standards/sist/dff177ff-9a7c-406d-ba88-6428e55adabc/sist-en-31-1998</a></p>
t	$\leq 170$	Horizontal distance between the centre line of the central hole and the centre line of the waste hole	

2.2. Washbasin for one hole fitting

Dimension reference	Values in millimetres	Definitions and comments
$d_2$	$35 \begin{smallmatrix} +2 \\ -1 \end{smallmatrix}$	Diameter of tap hole
$g_1$	$\leq 80$	Horizontal distance between the centre line of the tap hole to the edge of the bowl
$g_4$	$\geq 32$	Width of the flat plane of the tap platform from the centre of the tap hole to the back edge of the flat plane
$r$	$\geq 25$	Radius of a cylinder having the same centre line as the tap hole of a depth 0-5 mm from the lower plane of the tap hole
$r_1$	$\geq 30$	Radius of a cylinder having the same centre line as the tap hole of a depth of 5 mm min. from the lower plane of the tap hole
$s$	$\leq 18$	Thickness of the tap platform at the level of the zone concentric to the tap hole
$t$	$\leq 170$	Horizontal distance between the centre line of the tap hole and the centre line of the waste hole

