
**Essential oil of *Melaleuca*, terpinen-4-
ol type (Tea Tree oil)**

*Huile essentielle de Melaleuca, type terpinén-4-ol (huile essentielle de
Tea Tree)*

**iTeh STANDARD PREVIEW
(standards.iteh.ai)**

[ISO 4730:2017](https://standards.iteh.ai/catalog/standards/sist/ee6e9904-4058-4809-a22c-c2c4e14281ce/iso-4730-2017)

[https://standards.iteh.ai/catalog/standards/sist/ee6e9904-4058-4809-a22c-
c2c4e14281ce/iso-4730-2017](https://standards.iteh.ai/catalog/standards/sist/ee6e9904-4058-4809-a22c-c2c4e14281ce/iso-4730-2017)



iTeh STANDARD PREVIEW
(standards.iteh.ai)

ISO 4730:2017

<https://standards.iteh.ai/catalog/standards/sist/ee6e9904-4058-4809-a22c-c2c4e14281ce/iso-4730-2017>



COPYRIGHT PROTECTED DOCUMENT

© ISO 2017, Published in Switzerland

All rights reserved. Unless otherwise specified, no part of this publication may be reproduced or utilized otherwise in any form or by any means, electronic or mechanical, including photocopying, or posting on the internet or an intranet, without prior written permission. Permission can be requested from either ISO at the address below or ISO's member body in the country of the requester.

ISO copyright office
Ch. de Blandonnet 8 • CP 401
CH-1214 Vernier, Geneva, Switzerland
Tel. +41 22 749 01 11
Fax +41 22 749 09 47
copyright@iso.org
www.iso.org

Contents

Page

Foreword	iv
1 Scope	1
2 Normative references	1
3 Terms and definitions	1
4 Requirements	2
5 Additional information	3
5.1 Flashpoint	3
5.2 Enantiomeric distribution	3
6 Sampling	3
7 Packaging, labelling, marking and storage	3
Annex A (informative) Typical chromatograms of the analysis by gas chromatography of the essential oil of <i>Melaleuca</i>, terpinen-4-ol type (Tea Tree oil)	4
Annex B (informative) Flashpoint	8
Annex C (informative) Enantiomeric distribution — General information	9
Bibliography	10

iTeh STANDARD PREVIEW (standards.iteh.ai)

ISO 4730:2017

<https://standards.iteh.ai/catalog/standards/sist/ee6e9904-4058-4809-a22c-c2c4e14281ce/iso-4730-2017>

Foreword

ISO (the International Organization for Standardization) is a worldwide federation of national standards bodies (ISO member bodies). The work of preparing International Standards is normally carried out through ISO technical committees. Each member body interested in a subject for which a technical committee has been established has the right to be represented on that committee. International organizations, governmental and non-governmental, in liaison with ISO, also take part in the work. ISO collaborates closely with the International Electrotechnical Commission (IEC) on all matters of electrotechnical standardization.

The procedures used to develop this document and those intended for its further maintenance are described in the ISO/IEC Directives, Part 1. In particular the different approval criteria needed for the different types of ISO documents should be noted. This document was drafted in accordance with the editorial rules of the ISO/IEC Directives, Part 2 (see www.iso.org/directives).

Attention is drawn to the possibility that some of the elements of this document may be the subject of patent rights. ISO shall not be held responsible for identifying any or all such patent rights. Details of any patent rights identified during the development of the document will be in the Introduction and/or on the ISO list of patent declarations received (see www.iso.org/patents).

Any trade name used in this document is information given for the convenience of users and does not constitute an endorsement.

For an explanation on the voluntary nature of standards, the meaning of ISO specific terms and expressions related to conformity assessment, as well as information about ISO's adherence to the World Trade Organization (WTO) principles in the Technical Barriers to Trade (TBT) see the following URL: www.iso.org/iso/foreword.html. (standards.iteh.ai)

This document was prepared by Technical Committee ISO/TC 54, *Essential oils*.

This third edition cancels and replaces the second edition (ISO 4730:2004), which has been technically revised.

Essential oil of *Melaleuca*, terpinen-4-ol type (Tea Tree oil)

1 Scope

This document specifies certain characteristics of the essential oil of *Melaleuca*, terpinen-4-ol type (Tea Tree oil), in order to facilitate assessment of its quality.

2 Normative references

The following documents are referred to in the text in such a way that some or all of their content constitutes requirements of this document. For dated references, only the edition cited applies. For undated references, the latest edition of the referenced document (including any amendments) applies.

ISO/TS 210, *Essential oils — General rules for packaging, conditioning and storage*

ISO/TS 211, *Essential oils — General rules for labelling and marking of containers*

ISO 212, *Essential oils — Sampling*

ISO 279, *Essential oils — Determination of relative density at 20 °C — Reference method*

ISO 280, *Essential oils — Determination of refractive index*

ISO 592, *Essential oils — Determination of optical rotation*

ISO 875, *Essential oils — Evaluation of miscibility in ethanol*

ISO 11024 (all parts), *Essential oils — General guidance on chromatographic profiles*

3 Terms and definitions

For the purposes of this document, the following terms and definitions apply.

ISO and IEC maintain terminological databases for use in standardization at the following addresses:

— IEC Electropedia: available at <http://www.electropedia.org/>

— ISO Online browsing platform: available at <http://www.iso.org/obp>

3.1

essential oil of *Melaleuca*, terpinen-4-ol type

Tea Tree oil

essential oil obtained by steam distillation of the leaves and terminal branchlets of *Melaleuca alternifolia* (Maiden et Betche) Cheel or of *M. linariifolia* Sm.

Note 1 to entry: For information on the CAS number, see ISO/TR 21092.

4 Requirements

4.1 Essential oil of *Melaleuca*, terpinen-4-ol type (Tea Tree oil) shall meet the requirements as given in [Table 1](#).

Table 1 — Requirements for the essential oil of *Melaleuca*, terpinen-4-ol type (Tea Tree oil)

Characteristics	Requirements	ISO test method
Appearance	Clear, mobile liquid	—
Colour	Colourless to pale yellow	—
Odour	Characteristic	—
Relative density at 20 °C, d_{20}^{20}	0,885 to 0,906	ISO 279
Refractive index at 20 °C	1,475 to 1,482	ISO 280
Optical rotation	Between +7° and +12°	ISO 592
Miscibility in ethanol 85 % (volume fraction) at 20 °C	It shall not be necessary to use more than 2 volumes of ethanol, 85 % (volume fraction), to obtain a clear solution with 1 volume of essential oil	ISO 875

4.2 Chromatographic profile

Carry out the analysis of the essential oil by gas chromatography. Determine the chromatographic profile in accordance with the ISO 11024 series. Identify in the chromatogram obtained, the representative and characteristic components shown in [Table 2](#). The proportions of these components, indicated by the integrator, shall be as shown in [Table 2](#). This constitutes the chromatographic profile of the essential oil.

ISO 4730:2017

<https://standards.iteh.ai/catalog/standards/sist/ee6e9904-4058-4809-a22c->

Table 2 — Chromatographic profile

Components	Min. %	Max. %
α-Pinene	1,0	4,0
Sabinene	traces ^a	3,5
α-Terpinene	6,0	12,0
Limonene	0,5	1,5
p-Cymene	0,5	8,0
1,8-Cineole	traces ^a	10,0
γ-Terpinene	14,0	28,0
Terpinolene	1,5	5,0
Terpinen-4-ol	35,0	48,0
α-Terpineol	2,0	5,0
Aromadendrene	0,2	3,0
Ledene (syn. viridiflorene)	0,1	3,0
δ-Cadinene	0,2	3,0
Globulol	traces ^a	1,0
Viridiflorol	traces ^a	1,0

^a traces: <0,01 %.

NOTE The chromatographic profile is normative, contrary to typical chromatograms given for information in [Annex A](#).

5 Additional information

5.1 Flashpoint

Information on the flashpoint is given in [Annex B](#).

5.2 Enantiomeric distribution

Information concerning enantiomeric distribution is given in [Annex C](#).

6 Sampling

Sampling shall be performed in accordance with ISO 212. Minimum volume of test sample is 50 ml.

NOTE This volume allows each of the tests specified in this document to be carried out at least once.

7 Packaging, labelling, marking and storage

These items shall be in accordance with ISO/TS 210 and ISO/TS 211.

iTeh STANDARD PREVIEW
(standards.iteh.ai)

[ISO 4730:2017](#)

<https://standards.iteh.ai/catalog/standards/sist/ee6e9904-4058-4809-a22c-c2c4e14281ce/iso-4730-2017>

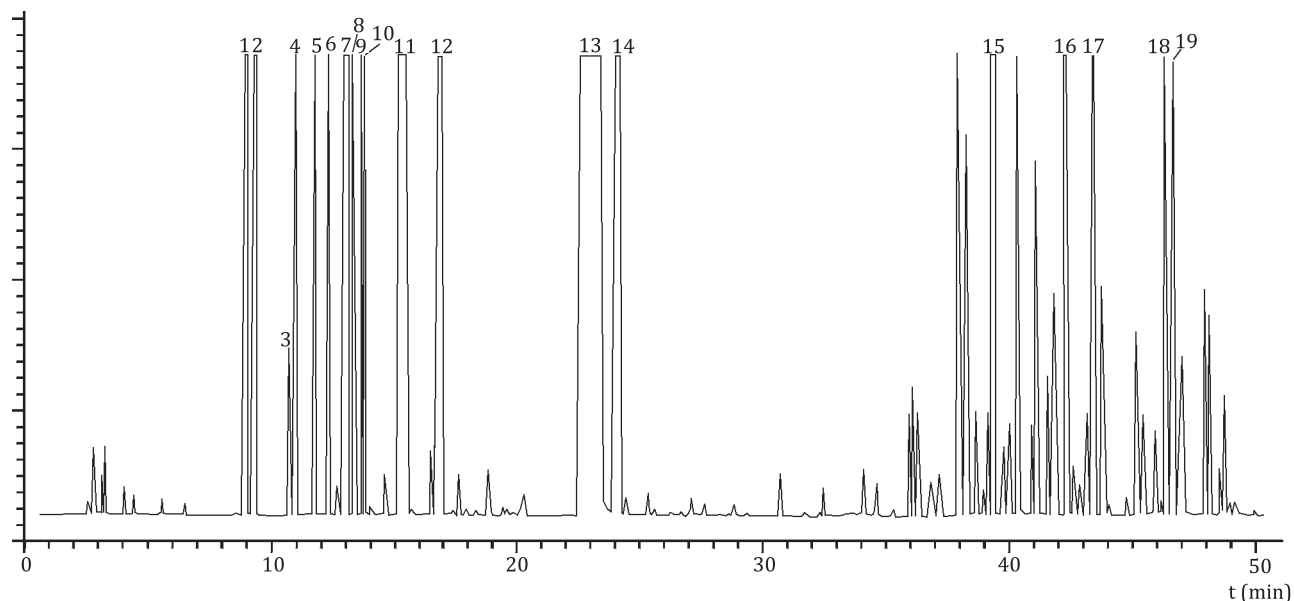
Annex A
(informative)

**Typical chromatograms of the analysis by gas chromatography of
the essential oil of *Melaleuca*, terpinen-4-ol type (Tea Tree oil)**

iTeh STANDARD PREVIEW
(standards.iteh.ai)

[ISO 4730:2017](https://standards.iteh.ai/catalog/standards/sist/ee6e9904-4058-4809-a22c-c2c4e14281ce/iso-4730-2017)

<https://standards.iteh.ai/catalog/standards/sist/ee6e9904-4058-4809-a22c-c2c4e14281ce/iso-4730-2017>



Peak identification	Operating conditions
1 α -Thujene	Column: fused silica capillary; length 50 m; internal diameter 0,20 mm
2 α -Pinene	Stationary phase: poly(dimethyl siloxane) (OV-101® a)
3 Sabinene	Film thickness: 0,25 μ m
4 β -Pinene	Oven temperature: temperature programming from 70 °C to 220 °C at a rate of 2 °C/min
5 Myrcene	Injector temperature: 230 °C
6 α -Phellandrene	Detector temperature: 250 °C
7 α -Terpinene	Detector: flame ionization type
8 <i>p</i> -Cymene	Carrier gas: hydrogen
9 1,8-Cineole + β -phellandrene	Volume injected: 0,2 μ l
10 Limonene	Carrier gas flow rate: 1,0 ml/min
11 γ -Terpinene	Split ratio: 1/100
12 Terpinolene	
13 Terpinen-4-ol	
14 α -Terpineol	
15 Aromadendrene	
16 Ledene (viridiflorene)	
17 δ -Cadinene	
18 Globulol	
19 Viridiflorol	

a OV-101® is an example of a suitable product available commercially. This information is given for the convenience of users of this document and does not constitute an endorsement by ISO of this product.

Figure A.1 — Typical chromatogram taken on an apolar column