



# Standard Test Method for Critical Radiant Flux of Floor-Covering Systems Using a Radiant Heat Energy Source<sup>1</sup>

This standard is issued under the fixed designation E 648; the number immediately following the designation indicates the year of original adoption or, in the case of revision, the year of last revision. A number in parentheses indicates the year of last reapproval. A superscript epsilon ( $\epsilon$ ) indicates an editorial change since the last revision or reapproval.

*This standard has been approved for use by agencies of the Department of Defense.*

## 1. Scope

1.1 This fire-test-response standard covers a procedure for measuring the critical radiant flux of horizontally mounted floor-covering systems exposed to a flaming ignition source in a graded radiant heat energy environment in a test chamber. A specimen is mounted over underlayment, a simulated concrete structural floor, bonded to a simulated structural floor, or otherwise mounted in a typical and representative way.

1.2 This fire-test-response standard measures the critical radiant flux at flame-out. It provides a basis for estimating one aspect of fire exposure behavior for floor-covering systems. The imposed radiant flux simulates the thermal radiation levels likely to impinge on the floors of a building whose upper surfaces are heated by flames or hot gases, or both, from a fully developed fire in an adjacent room or compartment. The standard was developed to simulate an important fire exposure component of fires that develop in corridors or exitways of buildings and is not intended for routine use in estimating flame spread behavior of floor covering in building areas other than corridors or exitways. See Appendix X1 for information on proper application and interpretation of experimental results from use of this test.

1.3 The values stated in SI units are to be regarded as the standard. The values given in parentheses are for information only.

1.4 The text of this standard references notes and footnotes that provide explanatory information. These notes and footnotes, excluding those in tables and figures, shall not be considered as requirements of this standard.

1.5 *This standard is used to measure and describe the response of materials, products, or assemblies to heat and flame under controlled conditions but does not by itself incorporate all factors required for fire-hazard or fire-risk assessment of materials, products, or assemblies under actual fire conditions.*

1.6 *This standard does not purport to address all of the safety concerns, if any, associated with its use. It is the responsibility of the user of this standard to establish appropriate safety and health practices and determine the applicability of regulatory limitations prior to use.* Specific hazard statements are given in Section 7.

## 2. Referenced Documents

2.1 *ASTM Standards:*<sup>2</sup>

C 1186 [Specification for Flat Fiber-Cement Sheets](#)

E 122 [Practice for Calculating Sample Size to Estimate, With Specified Precision, the Average for a Characteristic of a Lot or Process](#)

E 136 [Test Method for Behavior of Materials in a Vertical Tube Furnace at 750C](#)

E 171 [Specification for Atmospheres for Conditioning and Testing Flexible Barrier Materials](#)

E 176 [Terminology of Fire Standards](#)

## 3. Terminology

3.1 *Definitions*—See Terminology E 176 for additional definitions.

3.2 *Definitions of Terms Specific to This Standard:*

3.2.1 *blackbody temperature, n*—the temperature of a perfect radiator—a surface with an emissivity of unity and, therefore, a reflectivity of zero.

3.2.2 *corridor, n*—an enclosed space connecting a room or compartment with an exit. The corridor includes normal extensions, such as lobbies and other enlarged spaces, where present.

<sup>1</sup> This test method is under the jurisdiction of ASTM Committee E05 on Fire Standards and is the direct responsibility of Subcommittee E05.22 on Surface Burning.

Current edition approved April 1, 2009. Published May 2009. Originally approved in 1978. Last previous edition approved in 2008 as E648-08 and E 648 – 09.

<sup>2</sup> For referenced ASTM standards, visit the ASTM website, [www.astm.org](http://www.astm.org), or contact ASTM Customer Service at [service@astm.org](mailto:service@astm.org). For *Annual Book of ASTM Standards* volume information, refer to the standard's Document Summary page on the ASTM website.

3.2.3 *critical radiant flux, n*—the level of incident radiant heat energy on the floor covering system at the most distant flame-out point. It is reported as  $W/cm^2$  ( $Btu/ft^2 \cdot s$ ).

3.2.4 *flame-out, n*—the time at which the last vestige of flame or glow disappears from the surface of the test specimen, frequently accompanied by a final puff of smoke.

3.2.5 *floor covering, n*—an essentially planar material having a relatively small thickness in comparison to its length or width, which is laid on a floor to enhance the beauty, comfort, and utility of the floor.

3.2.6 *floor covering system, n*—a single material, composite or assembly comprised of the floor covering and related installation components (adhesive, cushion, etc.), if any.

3.2.7 *flux profile, n*—the curve relating incident radiant heat energy on the specimen plane to distance from the point of initiation of flaming ignition, that is, 0 cm.

3.2.8 *time zero, n*—the point in time when the chamber door is closed, which needs to occur within 3 s after the specimen has been moved into the chamber (see 12.5).

3.2.9 *total flux meter, n*—the instrument used to measure the level of radiant heat energy incident on the specimen plane at any point.

#### 4. Summary of Test Method

4.1 The basic elements of the test chamber are (1) an air-gas fueled radiant heat energy panel inclined at  $30^\circ$  to and directed at (2) a horizontally mounted floor covering system specimen, Fig. 1. The radiant panel generates a radiant energy flux distribution ranging along the 100-cm length of the test specimen from a nominal maximum of  $1.0 W/cm^2$  to a minimum of  $0.1 W/cm^2$ . The test is initiated by open-flame ignition from a pilot burner. The distance burned to flame-out is converted to watts per square centimetre from the flux profile graph, Fig. 2, and reported as critical radiant flux,  $W/cm^2$ .

#### 5. Significance and Use

5.1 This fire test response standard is designed to provide a basis for estimating one aspect of the fire exposure behavior of a floor-covering system installed in a building corridor. The test environment is intended to simulate conditions that have been observed and defined in full scale corridor experiments.

5.2 The test is intended to be suitable for regulatory statutes, specification acceptance, design purposes, or development and research.

5.3 The fundamental assumption inherent in the test is that critical radiant flux is one measure of the sensitivity to flame spread of floor-covering systems in a building corridor.

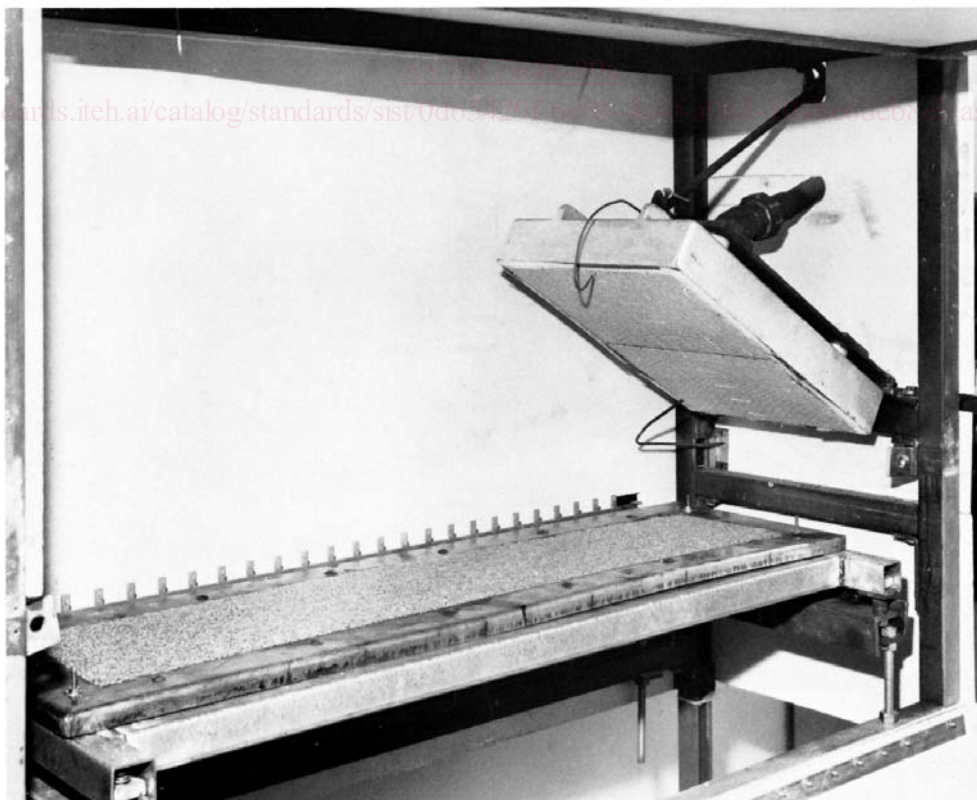


FIG. 1 Flooring Radiant Panel Test Showing Carpet Specimen and Gas Fueled Panel

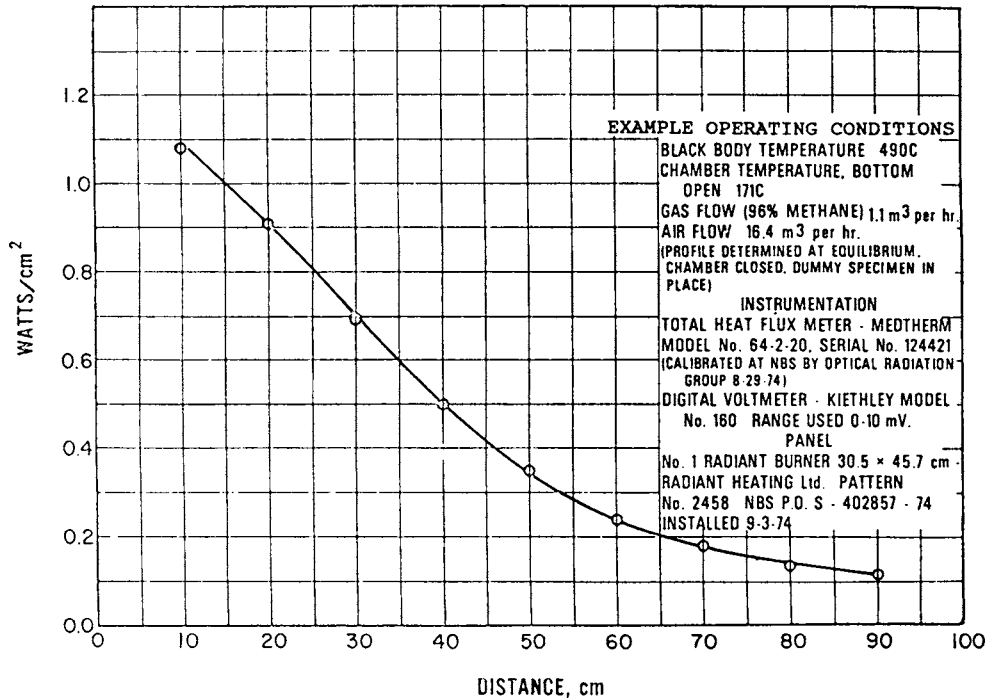


FIG. 2 Standard Radiant Heat Energy Flux Profile

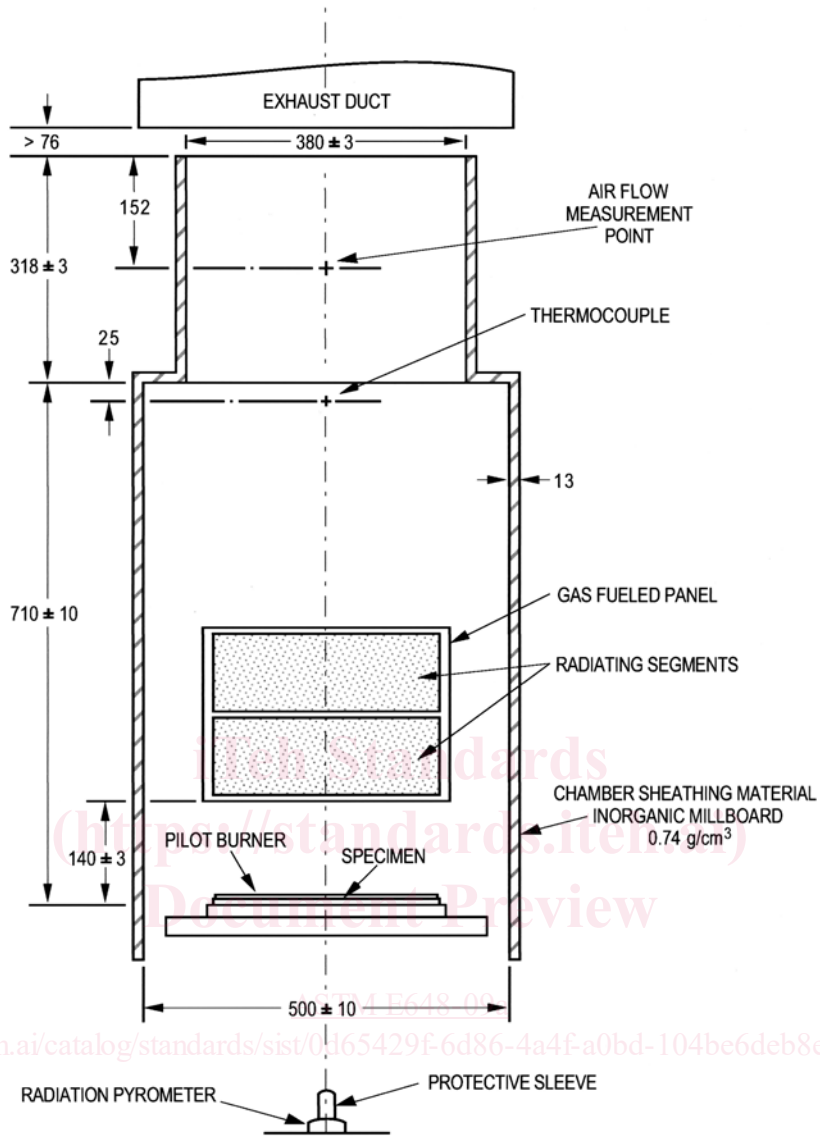
5.4 The test is applicable to floor-covering system specimens that follow or simulate accepted installation practice. Tests on the individual elements of a floor system are of limited value and not valid for evaluation of the flooring system.

iteh Standards  
 (https://standards.iteh.ai)  
 Document Preview

ASTM E648-09a

<https://standards.iteh.ai/catalog/standards/sist/0d65429f-6d86-4a4f-a0bd-104be6deb8eb/astm-e648-09a>





NOTE: ALL DIMENSIONS ARE MILLIMETERS

FIG. 4 Flooring Radiant Panel Tester Schematic Low Flux End, Elevation

6.1.3 When the rate of flame front advance is to be measured, a metal scale marked with 10-mm intervals shall be installed on the back of the platform or on the back wall of the chamber.

6.1.4 When the extent of flame travel is to be measured after a prescribed burning period, for example, 15 min, the metal scale described in 6.1.3 shall be used.

6.1.5 The top of the chamber shall have an exhaust stack with interior dimensions of 102 ± 3 mm (4.00 ± 0.13 in.) wide by 380 ± 3 mm (15.00 ± 0.13 in.) deep by 318 ± 3 mm (12.50 ± 0.13 in.) high at the opposite end of the chamber from the radiant energy source.

6.2 The radiant heat energy source shall be a panel of porous material mounted in a cast iron or steel frame with a radiation surface of 305 by 457 mm (12 by 18 in.). It shall be capable of operating at temperatures up to 816°C (1500°F). The panel fuel system shall consist of a venturi-type aspirator for mixing gas<sup>3</sup> and air at approximately atmospheric pressure, a clean, dry air supply capable of providing 28.3 NTP m<sup>3</sup>/h (1000 standard ft<sup>3</sup>/h) at 76 mm (3.0 in.) of water, and suitable instrumentation for monitoring and controlling the flow of fuel to the panel.

6.2.1 The radiant heat energy panel is mounted in the chamber at a nominal angle of 30 ± 5° to the horizontal specimen plane. The radiant panel shall be adjusted to obtain the flux profile within the limits specified in 10.6. The horizontal distance from the

<sup>3</sup> Gas used in this test shall be commercial grade propane having a heating value of approximately 83.1 MJ/m<sup>3</sup> (2500 Btu/ft<sup>3</sup>), commercial grade methane having a minimum purity of 96 %, or natural gas.

0 mark on the specimen fixture to the bottom edge (projected) of the radiating surface of the panel is  $89 \pm 3$  mm ( $3.5 \pm 0.13$  in.). The panel-to-specimen vertical distance is  $140 \pm 3$  mm ( $5.5 \pm 0.13$  in.) (see Fig. 3).

6.2.2 The radiation pyrometer for standardizing the thermal output of the panel shall be suitable for viewing a circular area 254 mm (10 in.) in diameter at a range of about 1.37 m (54 in.). It shall be calibrated over the 490 to 510°C (914 to 950°F) operating blackbody temperature range in accordance with the procedure described in Annex A1.

6.2.3 A high impedance or potentiometric voltmeter with a suitable millivolt range shall be used to monitor the output of the radiation pyrometer described in 6.2.2.

6.3 The specimen holder (see Fig. 45) shall be constructed from heat-resistant stainless steel (AISI Type 300 (UNA-N08330) or equivalent) having a thickness of 1.98 mm (0.078 in.) and an overall dimension of 1140 by 320 mm (45 by 12¾ in.) with a specimen opening of  $200 \pm 3$  mm by  $1000 + 15$  mm  $-0$  mm ( $7.9 \pm 0.13$  in. by  $39.4 + 0.59 -0$  in.). Six slots shall be cut in the flange on either side of the holder to reduce warping. The holder shall be fastened to the platform with two stud bolts at each end.

6.4 The pilot burner, used to ignite the specimen, is a nominal 6 mm (¼ in.) inside diameter, 10 mm (¾ in.) outside diameter stainless steel tube line burner having 19 evenly spaced 0.7 mm (0.028 in.) diameter (#70 drill) holes drilled radially along the centerline, and 16 evenly spaced 0.7 mm (0.028 in.) diameter (#70 drill) holes drilled radially 60° below the centerline (see Fig. 5 Fig. 6). In operation, the gas flow is adjusted to 0.085 to 0.100 m³/h (3.0 to 3.5 SCFH) (air scale) flow rate. The pilot burner is positioned no more than 5° from the horizontal so the flame generated will impinge on the specimen at the 0 distance burned point (see Fig. 3 and Fig. 4). When the burner is not being applied to the specimen, move it away from the ignition position so it is at least 50 mm (2 in.) away from the specimen.

6.4.1 With the gas flow properly adjusted and the pilot burner in the test position, the pilot flame shall extend from approximately 63.5 mm (2.5 in.) at either end to approximately 127 mm (5 in.) at the center.

6.4.2 The holes in the pilot burner shall be kept clean. A soft wire brush has been found suitable to remove the surface

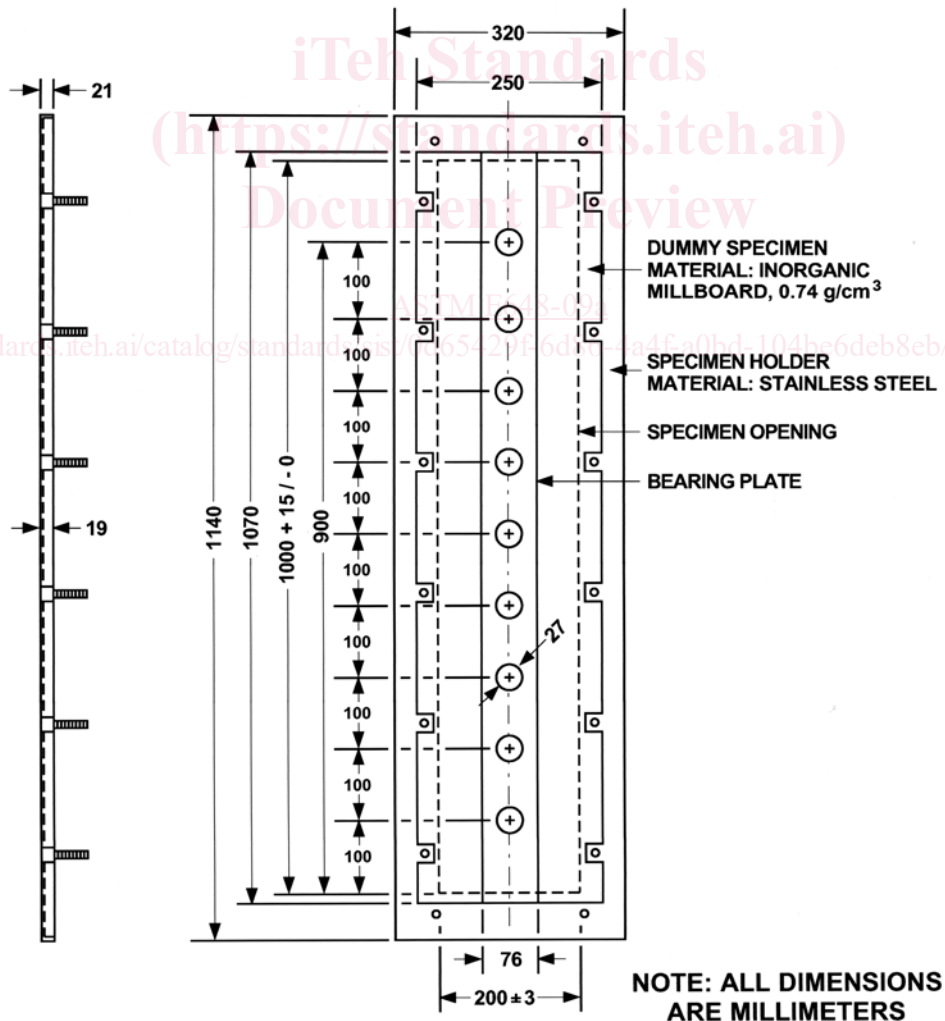


FIG. 5 Dummy Specimen in Specimen Holder (Bottom View)