
Razširjena uporaba rezultatov preskusov trajnosti samozapiranja za požarno odporna in/ali dimotesna vrata in okna, ki se odpirajo - 3. del: Trajnost samozapiranja jeklenih drsnih vrat

Extended application of test results on durability of self-closing for fire resistance and/or smoke control doorsets and openable windows - Part 3: Durability of self-closing of steel sliding doorsets

Erweiterter Anwendungsbereich von Prüfergebnissen zur Dauerhaftigkeit der Selbstschließung für Feuerschutz- (und/oder Rauchschutztüren) und zu öffnende Fenster - Teil 3: Dauerhaftigkeit der Selbstschließung von Schiebetoren aus Stahl

<https://standards.iteh.ai/catalog/standards/sist/9e59b08e-96d4-4415-bd69-2e8b5cc402eb/osist-pr-en-17020-3-2021>

Application étendue des résultats d'essais de durabilité de la fermeture automatique des blocs-portes et fenêtres ouvrantes résistants au feu et/ou étanches à la fumée - Partie 3 : Durabilité de la fermeture automatique des blocs-portes coulissants en acier

Ta slovenski standard je istoveten z: prEN 17020-3

ICS:

13.220.50	Požarna odpornost gradbenih materialov in elementov	Fire-resistance of building materials and elements
-----------	---	--

91.060.50	Vrata in okna	Doors and windows
-----------	---------------	-------------------

oSIST prEN 17020-3:2021

en,fr,de

iTeh STANDARD PREVIEW
(standards.iteh.ai)

[oSIST prEN 17020-3:2021](https://standards.iteh.ai/catalog/standards/sist/9e59b08e-96d4-4415-bd69-2e8b5ccd65c6/osist-pren-17020-3-2021)

<https://standards.iteh.ai/catalog/standards/sist/9e59b08e-96d4-4415-bd69-2e8b5ccd65c6/osist-pren-17020-3-2021>

EUROPEAN STANDARD
NORME EUROPÉENNE
EUROPÄISCHE NORM

DRAFT
prEN 17020-3

May 2021

ICS 13.220.50; 91.060.50

English Version

Extended application of test results on durability of self-closing for fire resistance and/or smoke control doorsets and openable windows - Part 3: Durability of self-closing of steel sliding doorsets

Erweiterter Anwendungsbereich von Prüfergebnissen zur Dauerhaftigkeit der Selbstschließung für Feuerschutz- und/oder Rauchschutztüren und zu öffnende Fenster - Teil 3: Dauerhaftigkeit der Selbstschließung von Schiebetoren aus Stahl

This draft European Standard is submitted to CEN members for enquiry. It has been drawn up by the Technical Committee CEN/TC 127.

If this draft becomes a European Standard, CEN members are bound to comply with the CEN/CENELEC Internal Regulations which stipulate the conditions for giving this European Standard the status of a national standard without any alteration.

This draft European Standard was established by CEN in three official versions (English, French, German). A version in any other language made by translation under the responsibility of a CEN member into its own language and notified to the CEN-CENELEC Management Centre has the same status as the official versions.

CEN members are the national standards bodies of Austria, Belgium, Bulgaria, Croatia, Cyprus, Czech Republic, Denmark, Estonia, Finland, France, Germany, Greece, Hungary, Iceland, Ireland, Italy, Latvia, Lithuania, Luxembourg, Malta, Netherlands, Norway, Poland, Portugal, Republic of North Macedonia, Romania, Serbia, Slovakia, Slovenia, Spain, Sweden, Switzerland, Turkey and United Kingdom.

Recipients of this draft are invited to submit, with their comments, notification of any relevant patent rights of which they are aware and to provide supporting documentation.

Warning : This document is not a European Standard. It is distributed for review and comments. It is subject to change without notice and shall not be referred to as a European Standard.



EUROPEAN COMMITTEE FOR STANDARDIZATION
COMITÉ EUROPÉEN DE NORMALISATION
EUROPÄISCHES KOMITEE FÜR NORMUNG

CEN-CENELEC Management Centre: Rue de la Science 23, B-1040 Brussels

Contents	Page
European foreword.....	3
Introduction	4
1 Scope.....	5
2 Normative references.....	5
3 Terms and definitions	6
4 Determination of the field of extended application	7
4.1 General.....	7
4.2 Procedure for evaluation	8
4.3 Procedure for maximum field of extended application	8
4.4 Interpretation of test results	9
5 Extended application report.....	9
6 Classification report.....	9
Annex A (normative) Construction parameter variations	10
Annex B (normative) Construction parameter variation simulation by applying additional weights.....	63
Bibliography.....	64

oSIST prEN 17020-3:2021
<https://standards.iteh.ai/catalog/standards/sist/9e59b08e-96d4-4415-bd69-2e8b5ccd65c6/osist-pren-17020-3-2021>

European foreword

This document (prEN 17020-3:2021) has been prepared by Technical Committee CEN/TC 127 “Fire safety in buildings”, the secretariat of which is held by BSI.

This document is currently submitted to the CEN Enquiry.

This document has been prepared under a mandate given to CEN by the European Commission and the European Free Trade Association.

A list of all parts in the EN 17020 series can be found on the CEN website.

iTeh STANDARD PREVIEW (standards.iteh.ai)

[oSIST prEN 17020-3:2021](https://standards.iteh.ai/catalog/standards/sist/9e59b08e-96d4-4415-bd69-2e8b5ccd65c6/osist-pren-17020-3-2021)

<https://standards.iteh.ai/catalog/standards/sist/9e59b08e-96d4-4415-bd69-2e8b5ccd65c6/osist-pren-17020-3-2021>

Introduction

The EN 15269 series of standards covering extended application of test results for fire resistance and/or smoke control for door, shutter and openable window assemblies, including their elements of building hardware, does not include the durability of self-closing of the doorsets following an extended application process. This document is one of the EN 17020 series of standards intended to be used for the purpose of producing an extended application report based on the evaluation of one or more durability of self-closing tests. These European Standards may also be used to identify the best selection of test specimens required to cover a wide range of product variations.

Before there can be any consideration for extended application, the doorset should have been tested in accordance with EN 12605:2017+A1:2020 or EN 1191 to achieve a test result which could generate a classification in accordance with EN 13501-2 and EN 16034 at least equal to the classification subsequently required from extended application considerations.

iTeh STANDARD PREVIEW (standards.iteh.ai)

[oSIST prEN 17020-3:2021](https://standards.iteh.ai/catalog/standards/sist/9e59b08e-96d4-4415-bd69-2e8b5ccd65c6/osist-pren-17020-3-2021)

<https://standards.iteh.ai/catalog/standards/sist/9e59b08e-96d4-4415-bd69-2e8b5ccd65c6/osist-pren-17020-3-2021>

1 Scope

This document is applicable to the following types of steel based doorsets: horizontally sliding doorsets (single and double), telescopic doorsets (single and double) and single vertically sliding doorsets as covered by EN 15269-7 or EN 15269-20.

This document prescribes the methodology for extending the application of test results obtained from durability of self-closing test(s) conducted in accordance with EN 12605:2017+A1:2020 or EN 1191.

Subject to the completion of the appropriate self-closing test(s), the extended application can cover all or some of the following non-exhaustive list:

- door leaf;
- pass doors;
- wall/ceiling fixed elements (frame/suspension system);
- ventilation grilles and/or louvres;
- glazing for door leaf;
- items of building hardware;
- decorative finishes;
- intumescent, smoke, draught or acoustic seals;
- alternative supporting construction(s).

iTeh STANDARD PREVIEW
(standards.iteh.ai)

[oSIST prEN 17020-3:2021](https://standards.iteh.ai/catalog/standards/sist/9e59b08e-96d4-4415-bd69-2e8b5ccd65c6/osist-pren-17020-3-2021)

2 Normative references

<https://standards.iteh.ai/catalog/standards/sist/9e59b08e-96d4-4415-bd69-2e8b5ccd65c6/osist-pren-17020-3-2021>

The following documents, in whole or in part, are normatively referenced in this document and are indispensable for its application. For dated references, only the edition cited applies. For undated references, the latest edition of the referenced document (including any amendments) applies.

EN 1191, *Windows and doors - Resistance to repeated opening and closing - Test method*

EN 1363-1, *Fire resistance tests - Part 1: General requirements*

EN 1363-2, *Fire resistance tests - Part 2: Alternative and additional procedures*

EN 1634-1, *Fire resistance and smoke control tests for door and shutter assemblies, openable windows and elements of building hardware - Part 1: Fire resistance test for door and shutter assemblies and openable windows*

EN 1634-3, *Fire resistance and smoke control tests for door and shutter assemblies, openable windows and elements of building hardware - Part 3: Smoke control test for door and shutter assemblies*

EN 12209, *Building hardware - Mechanically operated locks and locking plates - Requirements and test methods*

EN 12433-1, *Industrial, commercial and garage doors and gates - Terminology - Part 1: Types of doors*

EN 12433-2, *Industrial, commercial and garage doors and gates - Terminology - Part 2: Parts of doors*

prEN 17020-3:2021 (E)

EN 12605:2017+A1:2020, *Industrial, commercial and garage doors and gates - Mechanical aspects - Test methods*

EN 13501-2, *Fire classification of construction products and building elements - Part 2: Classification using data from fire resistance tests, excluding ventilation services*

EN 14846, *Building hardware - Locks and latches - Electromechanically operated locks and striking plates - Requirements and test methods*

EN 15269-1, *Extended application of test results for fire resistance and/or smoke control for door, shutter and openable window assemblies, including their elements of building hardware - Part 1: General requirements*

EN 15269-7, *Extended application of test results for fire resistance and/or smoke control for door, shutter and openable window assemblies, including their elements of building hardware - Part 7: Fire resistance for steel sliding doorsets*

EN 15685:2015, *Building hardware – Multipoint locks, latches and locking plates - Requirements and test methods*

EN ISO 13943, *Fire safety - Vocabulary (ISO 13943)*

3 Terms and definitions

For the purposes of this document, the terms and definitions given in EN 1191, EN 1363-1, EN 1363-2, EN 1634-1, EN 1634-3, EN 15269-1, EN 15269-7, EN 12433-1, EN 12433-2 and EN ISO 13943 and the following apply.

ISO and IEC maintain terminological databases for use in standardization at the following addresses:

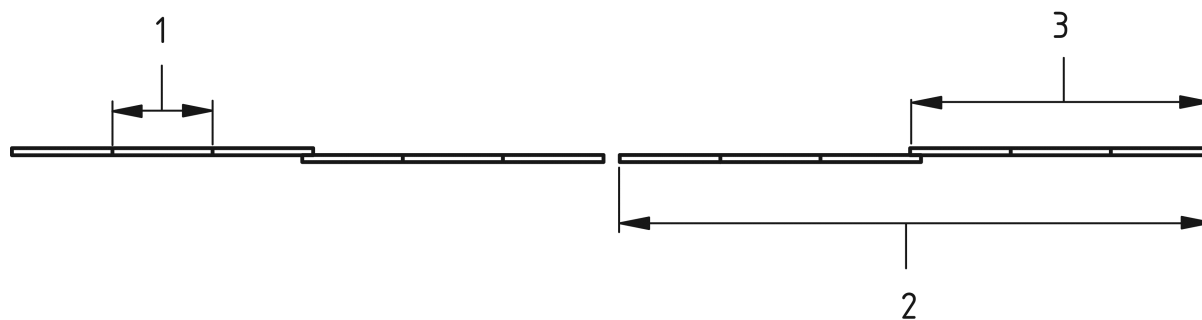
- ISO Online browsing platform: available at <https://www.iso.org/obp/ui>
- IEC Electropedia: available at <http://www.electropedia.org/>

3.1**full scale test**

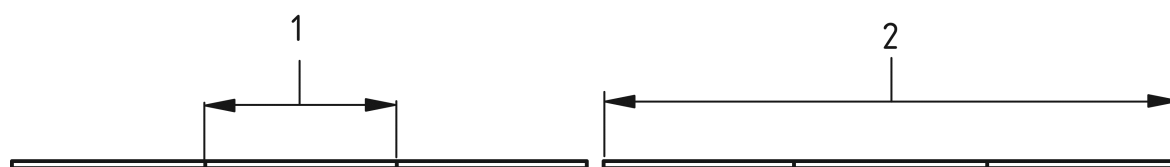
test of a full size doorset in accordance with EN 12605:2017+A1:2020 or EN 1191

3.2**panel**

part of a leaf or element of a doorset indicated as 1 in Figures 1 and 2

**Key**

- 1 panel
- 2 leaf
- 3 element

Figure 1 — Double leaf telescopic door**Key**

- 1 panel
- 2 leaf

iTeh STANDARD PREVIEW
(standards.iteh.ai)

Figure 2 — Double leaf sliding door

<https://standards.iteh.ai/catalog/standards/sist/9e59b08e-96d4-4415-bd69-2e8b5ccd65c6/osist-pren-17020-3-2021>

3.3**leaf**

part of a doorset indicated as 2 in Figures 1 and 2

3.4**element**

part of a leaf indicated as 3 in Figure 1

4 Determination of the field of extended application**4.1 General**

4.1.1 Before there can be any consideration for extended application, the doorset shall have been tested in accordance with EN 12605:2017+A1:2020 or EN 1191 to achieve a test result which could generate a classification in accordance with EN 13501-2 and/or correspond to a use category according to EN 16034.

4.1.2 A review of the doorset construction parameters can indicate, that one or more characteristics can be improved by a particular parameter variation. All evaluations shall be made on the basis of retaining the classifications obtainable from testing to EN 12605:2017+A1:2020 and/or EN 1191, including those with a lower number of opening and closing cycles. However, this shall never lead to an increased classification for any specific parameter beyond that achieved during any one test unless specifically identified in the relevant Construction Parameter Variation tables.

prEN 17020-3:2021 (E)

4.1.3 If, when following the extended application procedure, any part of the classified product cannot be achieved by extended application rules, that part shall be omitted from the subsequent extended application report and classification report.

4.2 Procedure for evaluation

4.2.1 Identify the variations from the original test specimen(s) which are required to be covered by an extended application report.

4.2.2 Locate the variations in the appropriate parameter variation by reference to columns (1) and (2) of Annex A, Table A.1.

4.2.3 Establish from the contents of column (3) of Annex A, Table A.1 whether any extended application is available without the need for further testing.

4.2.4 Where this is deemed to be possible, this can be recorded in the extended application report together with any appropriate restrictions and the stated rules from column (3) in Annex A, Table A.1.

4.2.5 Where the variations required can only be achieved from additional testing according to column (4), the additional test can be made on a similar specimen type to the original test against which the extended application is sought. Alternatively, column (4) in Table A.1 identifies an option for alternative testing and relevant test parameters.

4.3 Procedure for maximum field of extended application

4.3.1 It is possible to provide a limited field of extended application from the results of a single test. However, where a manufacturer intends to produce a range of sliding doors incorporating single leaf door assemblies and also double leaf door assemblies, with or without pass doors, with or without glazing, with alternative items of building hardware, etc., it is recommended that careful consideration is given to the complete range of doorset designs and options in order to minimize the testing required before testing commences.

4.3.2 Establish all the parameter variations, which are required to be part of the product range.

4.3.3 Determine which are the most important specification requirements and incorporate as many as possible into the specimen(s) for the first tests in the series.

4.3.4 Conduct the first durability test or a series of tests and then establish, which of the original desired parameter variations have not been covered by this test(s).

4.3.5 Identify these parameter variations in Annex A, Table A.1 and establish if any extended application is possible without further testing.

4.3.6 Record this for the extended application report together with any restrictions and rules given in column (3) in Annex A, Table A.1.

4.3.7 Evaluate which, if any, of the desired parameter variations have not been covered by the initial field of extended application derived from 4.3.6 above.

4.3.8 Determine if the product range is to include only single leaf doorsets or if the range is to also include double leaf configurations. Where only single doorsets are to be part of the product range, the outstanding construction parameter variations shall only be incorporated into specimens for the single leaf doorsets. Where single leaf and double leaf doorsets are to be included in the product range, the outstanding construction parameter variations for the extended application of single leaf doorsets may

be incorporated into either repeated single leaf doorset tests or, in the weakest option, as defined in column (4) of the table in Annex A, Table A.1, double leaf doorset configurations.

4.3.9 Select the required outstanding parameter variations from column (1) and column (2) of Annex A, Table A.1 and observe from column (4) of Annex A, Table A.1 which are the most appropriate weakest specimen options for further testing.

4.3.10 If the complete selection of required parameter variations has not been covered by the tests completed in accordance with 4.3.8 and 4.3.9 above, then an appropriate test or tests may be carried out with the additional product variations incorporated.

4.4 Interpretation of test results

4.4.1 In order to maximize the field of extended application, it is important that the test reports shall record details of any failures occurred throughout the test duration.

4.4.2 Where a series of tests have been conducted, the field of extended application shall be based on the lowest performance achieved from the complete series of tests unless premature failure has been attributed to one or more specific construction parameter variations.

4.4.3 Where it has been possible, to identify specific parameter failures, the extended application for all other construction parameter variations can be based on the performance achieved after isolating the premature failure(s).

iTeh STANDARD PREVIEW
(standards.iteh.ai)

5 Extended application report

Prepare an extended application report in accordance with the requirements of EN 15269-1 based on the results of evaluations in accordance with the above.

<https://standards.iteh.ai/catalog/standards/sist/9e59b08e-96d4-4415-bd69-2e8b5ccd65c6/osist-pren-17020-3-2021>

6 Classification report

The classification report shall be determined from the results of the extended application report and shall be presented in accordance with EN 13501-2:2016, Annex A.

Annex A (normative)

Construction parameter variations

Table A.1 below is designed to be used by experts competent in the field of fire resistance and self-closing durability testing of steel sliding doorsets.

The table shall only be used to assess a field of extended application when at least one positive self-closing durability test to EN 12605:2017+A1:2020 or EN 1191 has generated a classification according to EN 13501-2 and EN 16034.

The first two columns identify possible variations to the construction details of the specimen tested. It is presupposed that the variation does not restrain the door closing.

Column (3) leads to the judgement of the possibility of extending the field of application.

Where additional tests are deemed to be necessary, the type of specimen approved for incorporation of the changed parameter is defined in column (4). Where it is possible to use information from tests performed on one configuration for evidence on a different configuration, this allowance has been made in order to reduce the overall number of tests required for extended application evaluation e.g. single leaf doorsets to double leaf doorsets.

Where an additional test is required in column (4), the test is a full scale test unless otherwise specified.

In order to maximize the possible field of application from a minimum number of tests, the parameter changes have been spread over a series of test specimens. Where more than a single parameter variation is required, the influence on other variations shall also be taken into account.

<https://standards.iteh.ai/catalog/standards/sist/9e59b08e-96d4-4415-bd69-2e8b5ccd65c6/osist-pren-17020-3-2021>

Table A.1 — Construction parameter variations

Construction Parameter	Variation	Possibility of extension	Additional Evidence Required
(1)	(2)	(3)	(4)
A Door leaf			
A.1 General			
A.1.1 Number of leaves (not applicable for vertically sliding doors)	Single leaf from double leaf door test	Possible providing the overlap of the single leaf door is similar to the overlap of the double door (meeting edge) and all the constructional details have been tested (in the double door), otherwise not possible without an additional test. Any size variations of door leaf shall be in line with A.2.1 to A.2.4 incl.	Additional test single leaf doorset
A.1.2 Number of leaves (not applicable for vertically sliding doors)	Double leaf from single leaf door test	Not possible without an additional test	Additional test double leaf doorset or double leaf telescopic
A.1.3 Number of elements of telescopic doors, single leaf	Decrease	Possible providing all constructional details have been tested, otherwise not possible without an additional test	Additional test single or double leaf telescopic
A.1.4 Number of elements of telescopic doors, single leaf	Increase	Not possible without an additional test	Additional test single or double leaf telescopic
A.1.5 Number of elements of telescopic doors, double leaf — See Figure A.1	Decrease	Possible providing all constructional details have been tested and the reduction of elements is the same for both leaves, otherwise not possible without an additional test	Additional test double leaf telescopic
A.1.6 Number of elements of telescopic doors, double leaf (not applicable for vertically sliding doors)	Increase	Not possible without an additional test	Additional test double leaf telescopic

prEN 17020-3:2021 (E)

Construction Parameter	Variation	Possibility of extension	Additional Evidence Required
(1)	(2)	(3)	(4)
A.1.7 Number of panels per leaf/element- See Figure A.2	Add	Possible if tested at least one leaf (single, primary or secondary) with the minimum of two panels and the intended jointing technique centrally located in the door leaf. Otherwise not possible without an additional test	Additional test single or double leaf doorset
A.1.8 Number of panels per leaf/element- See Figure A.3	Reduce	Possible	-
A.1.9 Ventilation grilles (louvres) in door leaf tested without ventilation	Add	Possible providing the requirements of Annex B are fulfilled, otherwise not possible without an additional test	Additional test single or double leaf doorset
A.1.10 Ventilation grilles (louvres) in door leaf	Remove	Possible	-
A.1.11 Ventilation grilles (louvres) in door leaf tested with ventilation grille	Change of Location	Possible	-
A.1.12 Ventilation grilles (louvres) in door leaf tested with ventilation grille	Smaller size/Larger size	Smaller size: Possible Larger size: possible providing the requirements of Annex B are fulfilled, otherwise not possible without an additional test	Additional test single or double leaf doorset
A.2 Size variations/single or multiple panel construction			
A.2.1 Size (area, width, height) of door leaf	Decrease	Possible	-
A.2.2 Width of door leaf — See Figure A.4	Increase	Possible providing the requirements of Annex B are fulfilled, otherwise not possible without an additional test	Additional test double for single and double leaf door sets or single for single leaf door sets

Construction Parameter	Variation	Possibility of extension	Additional Evidence Required
(1)	(2)	(3)	(4)
A.2.3 Height of door leaf — See Figure A.5	Increase	Possible providing the requirements of Annex B are fulfilled, otherwise not possible without an additional test	Additional test double for single and double leaf door sets or single for single leaf door sets
A.2.4 Area of door leaf	Increase	Possible providing the requirements of Annex B are fulfilled, otherwise not possible without an additional test	Additional test double for single and double leaf door sets or single for single leaf door sets
A.2.5 Width of vertical door leaf panel for a sliding door with more than one panel	Decrease	Possible	-
A.2.6 Height of vertical door leaf panel	Increase	Possible providing the requirements of Annex B are fulfilled, otherwise not possible without an additional test	Additional test double for single and double leaf door sets or single for single leaf door sets
A.2.7 Height of vertical door leaf panel	Decrease	Possible https://standards.iso.org/standards/sist/9e59b08e-96d4-4415-bd69-2e8b5ccd65c6/osist-pren-17020-3-2021	-
A.2.8 Width of vertical door leaf panel	Increase	Possible providing the requirements of Annex B are fulfilled, otherwise not possible without an additional test	Additional test double for single and double leaf door sets or single for single leaf door sets
A.2.9 Area of vertical door leaf panel	Increase	Possible providing the requirements of Annex B are fulfilled, otherwise not possible without an additional test	Additional test double for single and double leaf door sets or single for single leaf door sets
A.2.10 Number of horizontal joints between panels	Increase	Possible	-
A.2.11 Number of horizontal joints between panels	decrease	Possible	-