

SLOVENSKI STANDARD

SIST-TS CLC/TS 50654-2:2020

01-september-2020

Nadomešča:

SIST-TS CLC/TS 50654-2:2018

Sistemi visokonapetostnega enosmernega omrežja in priključene pretvorniške postaje - Smernice in seznam parametrov za funkcijsko specifikacijo - 2. del: Seznam parametrov

HVDC Grid Systems and connected Converter Stations - Guideline and Parameter Lists for Functional Specifications - Part 2: Parameter Lists

Hochspannungsgleichstrom-Netzsysteme - Leitfaden und Parameter-Listen für funktionale Spezifikationen - Teil 2: Parameter-Listen

Réseaux CCHT et stations de conversion connectées - Lignes directrices et listes de paramètres pour les spécifications fonctionnelles - Partie 2: Listes de paramètres

Ta slovenski standard je istoveten z: CLC/TS 50654-2:2020

ICS:

29.240.01	Omrežja za prenos in distribucijo električne energije na splošno	Power transmission and distribution networks in general
-----------	--	---

SIST-TS CLC/TS 50654-2:2020

en

iTeh STANDARD PREVIEW **(standards.iteh.ai)**

SIST-TS CLC/TS 50654-2:2020

<https://standards.iteh.ai/catalog/standards/sist/c0985a5c-d522-47b2-bc93-5d8098f2e515/sist-ts-clc-ts-50654-2-2020>

TECHNICAL SPECIFICATION
SPÉCIFICATION TECHNIQUE
TECHNISCHE SPEZIFIKATION

CLC/TS 50654-2

June 2020

ICS 29.240.01

Supersedes CLC/TS 50654-2:2018

English Version

**HVDC Grid Systems and connected Converter Stations -
Guideline and Parameter Lists for Functional Specifications -
Part 2: Parameter Lists**

Réseaux CCHT et stations de conversion connectées -
Lignes directrices et listes de paramètres pour les
spécifications fonctionnelles - Partie 2: Listes de
paramètres

Hochspannungsgleichstrom-Netzsysteme - Leitfaden und
Parameter-Listen für funktionale Spezifikationen - Teil 2:
Parameter-Listen

This Technical Specification was approved by CENELEC on 2020-04-13.

CENELEC members are required to announce the existence of this TS in the same way as for an EN and to make the TS available promptly at national level in an appropriate form. It is permissible to keep conflicting national standards in force.

CENELEC members are the national electrotechnical committees of Austria, Belgium, Bulgaria, Croatia, Cyprus, the Czech Republic, Denmark, Estonia, Finland, France, Germany, Greece, Hungary, Iceland, Ireland, Italy, Latvia, Lithuania, Luxembourg, Malta, the Netherlands, Norway, Poland, Portugal, Republic of North Macedonia, Romania, Serbia, Slovakia, Slovenia, Spain, Sweden, Switzerland, Turkey and the United Kingdom.

[SIST-TS CLC/TS 50654-2:2020](https://standards.iteh.ai/catalog/standards/sist/c0985a5c-d522-47b2-bc93-5d8098f2e515/sist-ts-clc-ts-50654-2-2020)

<https://standards.iteh.ai/catalog/standards/sist/c0985a5c-d522-47b2-bc93-5d8098f2e515/sist-ts-clc-ts-50654-2-2020>



European Committee for Electrotechnical Standardization
Comité Européen de Normalisation Electrotechnique
Europäisches Komitee für Elektrotechnische Normung

CEN-CENELEC Management Centre: Rue de la Science 23, B-1040 Brussels

Contents	Page
European foreword	6
Introduction	7
1 Scope	8
1.1 General	8
1.2 About the present release	8
2 Normative references	9
3 Terms, definitions and abbreviations	10
3.1 Terms and definitions	10
3.2 Abbreviations	12
4 Coordination of HVDC Grid System and AC Systems	13
4.1 General	13
4.2 Purpose of the HVDC Grid System and Power Network Diagram	13
4.3 AC/DC Power Flow Optimisation	13
4.4 Converter Operational Functions	17
4.4.1 Basic Operation Functions – Converter Normal Operation State	17
4.4.2 Basic Operation Functions – Converter Abnormal Operation State	18
4.4.3 Ancillary Services	21
5 HVDC Grid System Characteristics	25
5.1 HVDC Circuit Topologies	25
5.1.1 Availability and Reliability	25
5.1.2 Basic Characteristics and Nomenclature	26
5.1.3 Attributes of HVDC Grid Systems or HVDC Grid Sub-Systems	26
5.1.4 Attributes of a Station	26
5.2 Connection Modes	27
5.3 Grid Operating States	27
5.3.1 General	27
5.3.2 Normal State	27
5.3.3 Alert State	27
5.3.4 Emergency State	28
5.3.5 Blackout State	28
5.3.6 Restoration	28
5.4 DC Voltages	28
5.4.1 General	28
5.4.2 Nominal DC System Voltage	29
5.4.3 Steady-State DC Voltage	30
5.4.4 Temporary DC Voltage	30
5.4.5 Neutral Bus Voltages	31
5.5 Insulation Coordination	31
5.6 Short-Circuit Characteristics	31
5.6.1 Calculation of Short-Circuit Currents in HVDC Grid Systems	31

5.6.2	Short-Circuit Current Design Requirements	33
5.7	Steady-State Voltage and Current Distortions	33
5.7.1	Voltage and Current Distortion Limits.....	33
5.7.2	Frequency Dependent DC System Impedance	34
5.8	DC System Restoration	34
5.8.1	General.....	34
5.8.2	Post DC Fault Recovery	34
5.8.3	Restoration from Blackout.....	34
6	HVDC Grid System Control	35
6.1	Closed-Loop Control Functions	35
6.1.1	General.....	35
6.1.2	Core Control Functions	35
6.1.3	Coordinating Control Functions.....	35
6.2	Controller Hierarchy.....	35
6.2.1	General.....	35
6.2.2	Internal Converter Control.....	35
6.2.3	DC Node Voltage Control	35
6.2.4	Coordinated HVDC Grid System Control	35
6.2.5	AC/DC Grid Control	37
6.3	Propagation of Information	38
6.4	Open-Loop Controls	41
6.4.1	Coordination of Connection Modes between Stations and their PoC-DCs	41
6.4.2	Operating Sequences for HVDC Grid System Installations	41
6.4.3	Post DC Fault Recovery	43
7	HVDC Grid System Protection.....	43
7.1	General	43
7.2	DC Fault Separation	43
7.3	Protection System Related Installations and Equipment.....	43
7.3.1	AC/DC Converter Station.....	43
7.3.2	HVDC Grid System Topology and Equipment.....	43
7.4	HVDC Grid System Protection Zones	43
7.4.1	General.....	43
7.4.2	Permanent Stop P	45
7.4.3	Permanent Stop PQ.....	46
7.4.4	Temporary Stop P.....	46
7.4.5	Temporary Stop PQ.....	46
7.4.6	Continued Operation.....	46
7.4.7	Example of a Protection Zone Matrix	46
7.5	DC Protection	46
7.5.1	General.....	46
7.5.2	DC Converter Protections	47
7.5.3	HVDC Grid System Protections	47
7.5.4	DC Grid Protection Communication	47
8	AC/DC Converter Stations.....	47
8.1	Introduction	47

CLC/TS 50654-2:2020 (E)

8.2	AC/DC Converter Station Types	47
8.3	Overall Requirements	47
8.3.1	Robustness of AC/DC Converter Stations	47
8.3.2	Availability and Reliability	47
8.3.3	Active Power Reversal	48
8.4	Main Circuit Design	48
8.4.1	General Characteristics	48
8.4.2	DC Side	49
8.4.3	AC Side	54
8.5	Controls	54
8.5.1	General	54
8.5.2	Automated vs. Manual Operation	54
8.5.3	Control Modes & Support of Coordination	55
8.5.4	Limitation Strategies	56
8.5.5	Operating Sequences for AC/DC Converter Station	56
8.5.6	Dynamic Behaviour	56
8.6	Protection	57
8.6.1	General	57
8.6.2	Configuration Requirements	57
8.6.3	Function Requirements	57
8.6.4	DC Grid Interface	57
8.6.5	Fault Separation Strategy for Faults inside the AC/DC Converter Station	57
8.6.6	Coordination of the DC Protection with the HVDC Grid System	57
8.6.7	Example for Coordination of the DC Protection with the HVDC Grid System	57
9	HVDC Grid System Installations	57
9.1	General	57
9.2	DC Switching Station	58
9.2.1	Overall Requirements	58
9.2.2	Main Circuit Design	58
9.2.3	Controls	64
9.2.4	Protection	68
10	Models and Validation	69
10.1	Introduction	69
10.2	HVDC Grid System Studies	69
10.2.1	Type of Studies	69
10.2.2	Tools and Methods	69
10.3	Model General Specifications	69
10.3.1	Model Capability	69
10.3.2	Model Format and Data Type	69
10.3.3	Model Aggregation	69
10.4	Model Specific Recommendations	70
10.4.1	Load Flow Models	70
10.4.2	Short-Circuit Models	71
10.4.3	Protection System Models	71
10.4.4	Insulation Coordination Related Models	71

10.4.5	Electromechanical Transient Models	71
10.4.6	Electromagnetic Transient Models	72
10.4.7	Power Quality Models	78
10.5	Model Validation	78
10.6	Compliance Simulation	79
10.7	Outputs/Results	79
10.7.1	Model Data	79
10.7.2	Model Documentation	79
10.7.3	Model Example	79
10.7.4	Model Compliance Documentation	80
10.7.5	Model Validation Documentation – Model Final Version	80
10.7.6	Model Guarantee	80
11	HVDC Grid System Integration Tests	80
11.1	Off-Site Testing of the HVDC Control and Protection System	80
11.2	Dynamic Performance Study/Tests (DPS) Performed with Offline Models	80
11.2.1	DPS Simulations in a Multi-Vendor Environment	80
11.2.2	DPS Simulations Scenarios	80
11.3	Factory Tests	81
11.3.1	General	81
11.3.2	Factory Test Scenarios	81
11.3.3	Factory Tests when Existing System C&P Replicas are Available	81
11.3.4	Factory Tests when Existing System C&P Replicas are not Available	81
11.4	On Site Testing	82
Bibliography	83

SIST-TS CLC/TS 50654-2:2020

<https://standards.iteh.ai/catalog/standards/sist/c0985a5c-d522-4762-bc93-5d8098f2e515/sist-ts-clc-ts-50654-2-2020>

CLC/TS 50654-2:2020 (E)**European foreword**

This document (CLC/TS 50654-2:2020) has been prepared by CLC/TC8X “*System aspects of electrical energy supply*”.

This document supersedes CLC/TS 50654-2:2018.

CLC/TS 50654-2:2020 includes the following significant technical changes with respect to CLC/TS 50654-2:2018:

- new content concerning AC/DC converter stations;
- new content concerning HVDC Grid System installations, including DC switching stations;
- new content concerning HVDC Grid System integration tests.

Attention is drawn to the possibility that some of the elements of this document may be the subject of patent rights. CENELEC shall not be held responsible for identifying any or all such patent rights.

iTeh STANDARD PREVIEW
(standards.iteh.ai)

SIST-TS CLC/TS 50654-2:2020

<https://standards.iteh.ai/catalog/standards/sist/c0985a5c-d522-47b2-bc93-5d8098f2e515/sist-ts-clc-ts-50654-2-2020>

Introduction

HVDC Grid Systems are a new field of technology. There are very few systems with a small number of converter stations in operation; some more are in execution or in detailed planning.

The Guidelines and Parameter Lists to Functional Specifications are presented featuring planning, specification and execution of multi-vendor HVDC Grid Systems in Europe. Being elaborated by a team of experts from leading manufacturers of HVDC technology, Transmission System Operators (TSO's), Academia and Institutions in Europe, the present document provides a commonly agreed basis for an open market of compatible equipment and solutions for HVDC Grid Systems. Executing such systems and gaining operational experience is seen an important prerequisite for developing corresponding technical standards in the future.

By elaborating this document, special care has been taken to as far as possible describe the requirements in a technologically independent way. In order to achieve that, a function of interest is described by a comprehensive set of parameters. The parameters are selected based on a systematic analysis of physical phenomena relevant to achieve the requested functionality. The physical phenomena are categorized in order to show the mutual dependence of the individual parameters and ensure completeness of the physical aspects to be considered. Based on a clearly defined common language describing the functionalities requested, existing technologies can be applied, or new dedicated technical solutions can be developed.

Reflecting the early stage of technology, these Guidelines and Parameter Lists to Functional Specifications need comprehensive explanations and background information for the technical parameters. This dual character of the content will be represented by two corresponding parts:

- Part I “Guidelines” containing the explanations and the background information in context with the Parameter Lists.
- Part II “Parameter Lists” containing the essential lists of parameters and values describing properties of the AC respectively DC system (operating conditions) and parameters describing the performance of the newly installed component (performance requirements).

<https://standards.iteh.ai/catalog/standards/sist/c0985a5c-d522-47b2-bc93-5d8098f2e515/sist-ts-clc-ts-50654-2-2020>

CLC/TS 50654-2:2020 (E)

1 Scope

1.1 General

These Guidelines and Parameter Lists to Functional Specifications describe specific functional requirements for HVDC Grid Systems. The terminology “HVDC Grid Systems” is used here describing HVDC systems for power transmission having more than two converter stations connected to a common DC circuit.

While this document focuses on requirements, that are specific for HVDC Grid Systems, some requirements are considered applicable to all HVDC systems in general, i.e. including point-to-point HVDC systems. Existing IEC, Cigré or other documents relevant have been used for reference as far as possible.

Corresponding to electric power transmission applications, this document is applicable to high voltage systems, i.e. only nominal DC voltages equal or higher than 50 kV with respect to earth are considered in this document.

NOTE While the physical principles of DC networks are basically voltage independent, the technical options for designing equipment get much wider with lower DC voltage levels, e.g. in case of converters or switchgear.

Both parts have the same outline and headlines to aid the reader.

1.2 About the present release

The present release of the Guidelines and Parameter Lists for Functional Specifications describes technical guidelines and specifications for HVDC Grid Systems which are characterized by having exactly one single connection between two converter stations, often referred to as radial systems. When developing the requirements for radial systems, care is taken not to build up potential showstoppers for meshed systems. Meshed HVDC Grid Systems can be included into this specification at a later point in time.

The Guidelines and Parameter List to the Functional Specification of HVDC Grid Systems cover technical aspects of:

- coordination of HVDC grid and AC systems
- HVDC Grid System characteristics
- HVDC Grid System control
- HVDC Grid System protection
- AC/DC converter stations
- HVDC Grid System installations, including DC switching stations
- models and validation
- HVDC Grid System integration tests

Beyond the present scope, the following content is proposed for future work:

- transmission lines and transition stations
- DC/DC converter stations
- DC line power flow controllers

2 Normative references

The following documents are referred to in the text in such a way that some or all of their content constitutes requirements of this document. For dated references, only the edition cited applies. For undated references, the latest edition of the referenced document (including any amendments) applies.

EN 61660-1:1997, *Short-circuit currents in d.c. auxiliary installations in power plants and substations - Part 1: Calculation of short-circuit currents*

IEC/TR 60919-1:2010¹, *Performance of high-voltage direct current (HVDC) systems with line-commutated converters – Part 1: Steady-state conditions*

IEC 62747:2014², *Terminology for voltage-sourced converters (VSC) for high-voltage direct current (HVDC) systems*

IEV 351-45-27, *International electrotechnical vocabulary, control technology*

iTeh STANDARD PREVIEW
(standards.iteh.ai)

[SIST-TS CLC/TS 50654-2:2020](https://standards.iteh.ai/catalog/standards/sist/c0985a5c-d522-47b2-bc93-5d8098f2e515/sist-ts-clc-ts-50654-2-2020)

<https://standards.iteh.ai/catalog/standards/sist/c0985a5c-d522-47b2-bc93-5d8098f2e515/sist-ts-clc-ts-50654-2-2020>

¹ As impacted by IEC/TR 60919-1:2010/A1:2013, IEC/TR 60919-1:2010/A2:2017.

² As impacted by IEC 62747:2014/A1:2019.

CLC/TS 50654-2:2020 (E)

3 Terms, definitions and abbreviations

3.1 Terms and definitions

For the purposes of this document, the following terms and definitions apply. ISO and IEC maintain terminological databases for use in standardization at the following addresses:

- IEC Electropedia: available at <http://www.electropedia.org/>
- ISO Online browsing platform: available at <https://www.iso.org/obp>

3.1.1

AC/DC converter unit

indivisible operative unit comprising all equipment between the point of connection on the AC side and the point of connection on the DC side, essentially one or more converters, together with converter transformers, control equipment, essential protective and switching devices and auxiliaries, if any, used for conversion

[SOURCE: EN 62747:2014², modified – The definition was neutralised with respect to technology (not only VSC converters) and uses the terms PoC as defined in the present document]

3.1.2

AC/DC converter station

part of an HVDC system which consists of one or more AC/DC converter units including DC switchgear, DC fault current controlling devices, if any, installed in a single location together with buildings, reactors, filters, reactive power supply, control, monitoring, protective, measuring and auxiliary equipment

[SOURCE: EN 62747:2014², modified – The definition was made specific with respect to AC/DC converter units, differentiating from DC/DC converter units. Furthermore, only the term AC/DC converter station is used in the present document]

3.1.3

Point of connection-DC

PoC-DC

electrical interface point at DC voltage as shown in Figure 1

3.1.4

Point of connection-AC

PoC-AC

electrical interface point at AC voltage as shown in Figure 1

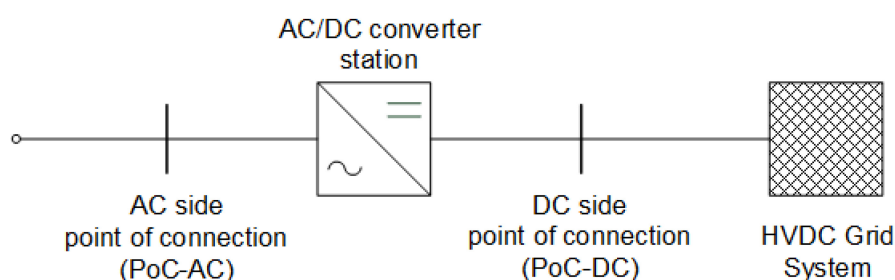


Figure 1 — Definition of the Point of Connection-AC and the Point of Connection-DC at an AC/DC converter station

3.1.5

DC/DC converter unit

indivisible operative unit comprising all equipment between the points of connection to the HVDC Grid System, essentially one or more converters, together with converter transformers, if any, control equipment, essential protective and switching devices and auxiliaries, if any, used for conversion

3.1.6**DC/DC converter station**

part of an HVDC Grid System which consists of one or more DC/DC converter units including DC switchgear, DC fault current controlling devices, if any, installed in a single location together with buildings, reactors, filters, control, monitoring, protective, measuring and auxiliary equipment, if any

3.1.7**DC switching unit**

indivisible operative unit comprising all equipment between the DC busbars and the terminals (HV poles and neutral, if any) of one point of connection on the DC side, comprising, if any, one or more switches, control, monitoring, protective, measuring equipment and auxiliaries

3.1.8**DC switching station**

part of an HVDC Grid System which consists of one or more DC switches, but not converter units, installed in a single location together with buildings, reactors, filters, control, monitoring, protective, measuring and auxiliary equipment, if any

3.1.9**HVDC Grid System**

high voltage direct current transmission network connecting more than two AC/DC converter stations transferring energy in the form of high-voltage direct current including related transmission lines, switching stations, DC/DC converter stations, if any, as well as other equipment and sub-systems needed for operation

3.1.10**meshed HVDC Grid System**

HVDC Grid System having more than one direct current connection between at least two converter stations

3.1.11**radial HVDC Grid System**

HVDC Grid System having exactly one direct current connection between two arbitrary converter stations

3.1.12**DC protection zone**

physical part of a HVDC Grid System with a distinct DC fault handling sequence

3.1.13**rigid bipolar (HVDC) system**

bipolar (HVDC) system without Dedicated Return Path or electrodes as illustrated in Figure 2

Note 1 to entry: Monopolar operation is possible by means of bypass switches during a converter pole outage, but not during an HVDC conductor outage. A short bipolar outage will follow a converter pole outage before bypass operation can be established.

[SOURCE: IEC/TR 60919-1:2010¹]

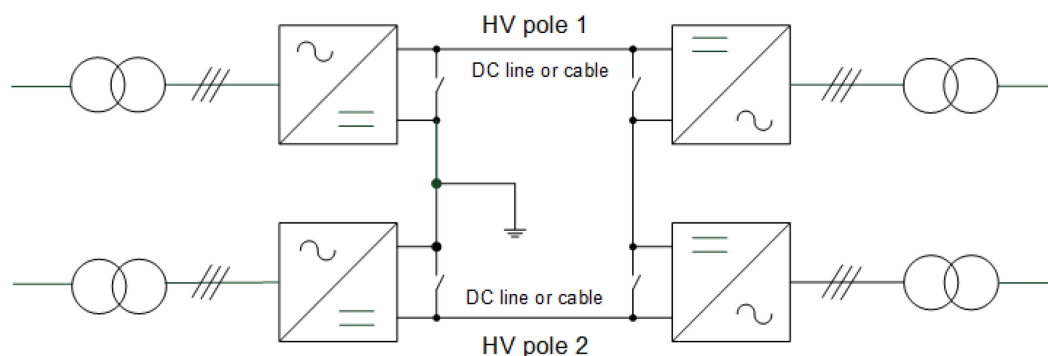


Figure 2 — Rigid Bipolar HVDC system

CLC/TS 50654-2:2020 (E)

3.2 Abbreviations

AC/DC	alternating current / direct current (conversion)
BB	bus bar
CB	circuit breaker
CLES	converter local earthing switch
CU	converter unit
C&P	control and protection
DC/DC	direct current / direct current (conversion)
DPS	dynamic performance studies
DPT	dynamic performance tests
EMT	electromagnetic transients
ENTSO-E	European Network of Transmission System Operators for Electricity
ERTS	earth return transfer switch
FAT	factory acceptance tests
FCR	frequency containment reserve
FRR	frequency restoration reserve
FSD	fault separation device
GOOSE	generic object-oriented substation events
HSS	high-speed switches
HV	high voltage
HVDC	high-voltage direct current
IEEE	Institute of Electrical and Electronics Engineers
LAT	laboratory acceptance test
MMC	modular multilevel converter
MRTS	metallic return transfer switch
NBGS	neutral bus grounding switch
NBS	neutral bus switch
NC	Network Code
OHL	overhead line
OP	operating point
OPF	optimum power flow
OVRT	over-voltage ride through
PoC	point of connection
POD	power oscillation damping
STATCOM	static synchronous compensator
SRAS	System Recovery Ancillary Service
T	terminal
THD	total harmonic distortion
TSO	transmission system operator
UVRT	under-voltage ride through

VSC voltage-sourced converter

4 Coordination of HVDC Grid System and AC Systems

4.1 General

No parameters necessary.

4.2 Purpose of the HVDC Grid System and Power Network Diagram

To explain the AC and HVDC Grid System structure a network diagram shall be specified showing the grid topology including the installations and their connections. This diagram shall contain information such as:

- AC/DC converter station
- DC switching station
- transmission line (overhead line, cable or combinations thereof)
- DC/DC converter station
- DC line power flow controller.
- AC networks showing the connection of each AC/DC converter station to the synchronous areas
- HVDC Grid System and converter station topology for each AC/DC converter station as well as each DC/DC converter station according to the nomenclature given in Table 1.
- DC earthing impedances at each AC/DC converter station and DC/DC converter station
- fault separation devices
- energy storages
- energy absorbers, e.g. dynamic braking devices typically used for absorbing energy from wind farms or HV pole re-balancing after pole-to-earth DC faults

Table 1 — Nomenclature of HVDC circuit topologies

Characteristics of the HVDC Grid System			-	Characteristics of a converter station		
Number of HV poles	DC	DC earthing	-	connection to pole	neutral return path	station earthing
1 2	DC	"z" not effectively earthed "e" effectively earthed	-	"1" pole <u>1</u> "2" pole <u>2</u> "B" <u>both</u>	"O" <u>none</u> "R" <u>return</u> conductor "E" earth or sea <u>electrode</u>	"O" <u>none</u> "Z" impedance "E" <u>direct</u>
Please refer to CLC/TS 50654-1:2018, 5.1, for details of the nomenclature						

4.3 AC/DC Power Flow Optimisation

To provide a basis for the AC/DC power flow optimization the purpose and the operational strategy of the combined AC/DC system needs to be described. The optimization problem is expressed by objective function(s) and relevant boundary conditions.

The interface points between the HVDC Grid System and AC systems are the Points of Connection (PoC-AC).