
**Fire safety engineering —
Requirements governing algebraic
formulae —**

**Part 1:
General requirements**

*Ingénierie de la sécurité incendie — Exigences régissant les équations
algébriques —*

Partie 1: Exigences générales

Document Preview

[ISO 24678-1:2019](#)

<https://standards.iteh.ai/catalog/standards/iso/dc7868f4-8b4c-487c-9d47-e024da58ff6e/iso-24678-1-2019>



iTeh Standards
(<https://standards.iteh.ai>)
Document Preview

[ISO 24678-1:2019](https://standards.iteh.ai/catalog/standards/iso/dc7868f4-8b4c-487c-9d47-e024da58ff6e/iso-24678-1-2019)

<https://standards.iteh.ai/catalog/standards/iso/dc7868f4-8b4c-487c-9d47-e024da58ff6e/iso-24678-1-2019>



COPYRIGHT PROTECTED DOCUMENT

© ISO 2019

All rights reserved. Unless otherwise specified, or required in the context of its implementation, no part of this publication may be reproduced or utilized otherwise in any form or by any means, electronic or mechanical, including photocopying, or posting on the internet or an intranet, without prior written permission. Permission can be requested from either ISO at the address below or ISO's member body in the country of the requester.

ISO copyright office
CP 401 • Ch. de Blandonnet 8
CH-1214 Vernier, Geneva
Phone: +41 22 749 01 11
Fax: +41 22 749 09 47
Email: copyright@iso.org
Website: www.iso.org

Published in Switzerland

Contents

Page

Foreword	iv
Introduction	v
1 Scope	1
2 Normative references	1
3 Terms and definitions	1
4 Requirements governing description of physical phenomena	2
4.1 Fire phenomena to be considered in calculation.....	2
4.2 Scenario elements.....	2
4.3 Interactions between phenomena.....	2
5 Requirements governing calculation process	2
5.1 Selection of an appropriate method.....	2
5.2 Procedure.....	2
5.3 Separate clause.....	2
5.4 Definition of variables.....	2
5.5 Scientific basis.....	2
5.6 Examples.....	2
6 Requirements governing limitations	3
6.1 Quantitative and/or qualitative limits on application.....	3
6.2 Limits on the use in a numerical method.....	3
7 Requirements governing input parameters	3
7.1 Identification of input parameters.....	3
7.2 Sources of input parameters.....	3
7.3 Valid range of input parameters.....	3
7.4 Consistency with other part of assessment.....	3
8 Requirements governing domain of applicability	3
Bibliography	4

Foreword

ISO (the International Organization for Standardization) is a worldwide federation of national standards bodies (ISO member bodies). The work of preparing International Standards is normally carried out through ISO technical committees. Each member body interested in a subject for which a technical committee has been established has the right to be represented on that committee. International organizations, governmental and non-governmental, in liaison with ISO, also take part in the work. ISO collaborates closely with the International Electrotechnical Commission (IEC) on all matters of electrotechnical standardization.

The procedures used to develop this document and those intended for its further maintenance are described in the ISO/IEC Directives, Part 1. In particular, the different approval criteria needed for the different types of ISO documents should be noted. This document was drafted in accordance with the editorial rules of the ISO/IEC Directives, Part 2 (see www.iso.org/directives).

Attention is drawn to the possibility that some of the elements of this document may be the subject of patent rights. ISO shall not be held responsible for identifying any or all such patent rights. Details of any patent rights identified during the development of the document will be in the Introduction and/or on the ISO list of patent declarations received (see www.iso.org/patents).

Any trade name used in this document is information given for the convenience of users and does not constitute an endorsement.

For an explanation of the voluntary nature of standards, the meaning of ISO specific terms and expressions related to conformity assessment, as well as information about ISO's adherence to the World Trade Organization (WTO) principles in the Technical Barriers to Trade (TBT) see www.iso.org/iso/foreword.html.

This document was prepared by Technical Committee ISO/TC 92, *Fire safety*, Subcommittee SC 4, *Fire safety engineering*.

A list of all parts in the ISO 24678 series can be found on the ISO website.

Any feedback or questions on this document should be directed to the user's national standards body. A complete listing of these bodies can be found at www.iso.org/members.html.

Introduction

The ISO 24678 series is intended to be used by fire safety practitioners involved with fire safety engineering calculation methods. Examples include fire safety engineers; authorities having jurisdiction such as: territorial authority officials, fire service personnel, code enforcers and code developers. It is expected that users of this document are appropriately qualified and competent in the field of fire safety engineering. It is particularly important that users understand the parameters within which particular methodologies may be used.

Algebraic formulae conforming to the requirements of this document are used with other engineering calculation methods during fire safety design. Such design is preceded by the establishment of a context, including the fire safety goals and objectives to be met, as well as performance criteria when a trial fire safety design is subject to specified design fire scenarios. Engineering calculation methods are used to determine if these performance criteria are met by a particular design and if not, how the design needs to be modified. The subjects of engineering calculations include the fire-safe design of entirely new built environments, such as buildings, ships or vehicles as well as the assessment of the fire safety of existing built environments.

The algebraic formulae discussed in this document can be useful for estimating the consequences of design fire scenarios. Such formulae are valuable for allowing the practitioner to quickly determine how a proposed fire safety design needs to be modified to meet the performance criteria and to compare among multiple trial designs. Detailed numerical calculations can be delayed until final design documentation. Examples of areas where algebraic formulae have been applicable include determination of heat transfer, both convective and radiant, from fire plumes, prediction of ceiling jet flow behaviours governing detector response, calculation of smoke transport through vent openings and analysis of compartment fire hazards such as smoke filling and flashover. However, the simple models often have stringent limitations and are less likely to include the effects of multiple phenomena occurring in the design scenario.

ISO 23932-1 is supported by a set of fire safety engineering documents available on the methods and data needed for the steps in a fire safety engineering design summarized in [Figure 1](#) (taken from ISO 23932-1:2018, Clause 4). This set of documents is referred to as the Global Fire Safety Engineering Analysis and Information System. This global approach and system of documents provides an awareness of the interrelationships between fire evaluations when using the set of fire safety engineering documents. The set includes ISO 16730-1, ISO 16732-1, ISO 16733-1, ISO 16734, ISO 16735, ISO 16736, ISO 16737, ISO/TS 13447, ISO 24678, ISO/TS 24679, ISO/TS 29761 and other supporting technical reports that provide examples of and guidance on the application of these documents.

Each document supporting the Global Fire Safety Engineering Analysis and Information System includes language in the introduction to tie said document to the steps in the fire safety engineering design process outlined in ISO 23932-1. ISO 23932-1 requires that engineering methods are selected properly to predict the fire consequences of specific scenarios and scenario elements (ISO 23932-1:2018, Clause 10). Pursuant to the requirements of ISO 23932-1, this document provides the requirement governing algebraic formulae for fire safety engineering. This step in the fire safety engineering process is shown as a highlighted box in [Figure 1](#) and described in ISO 23932-1.

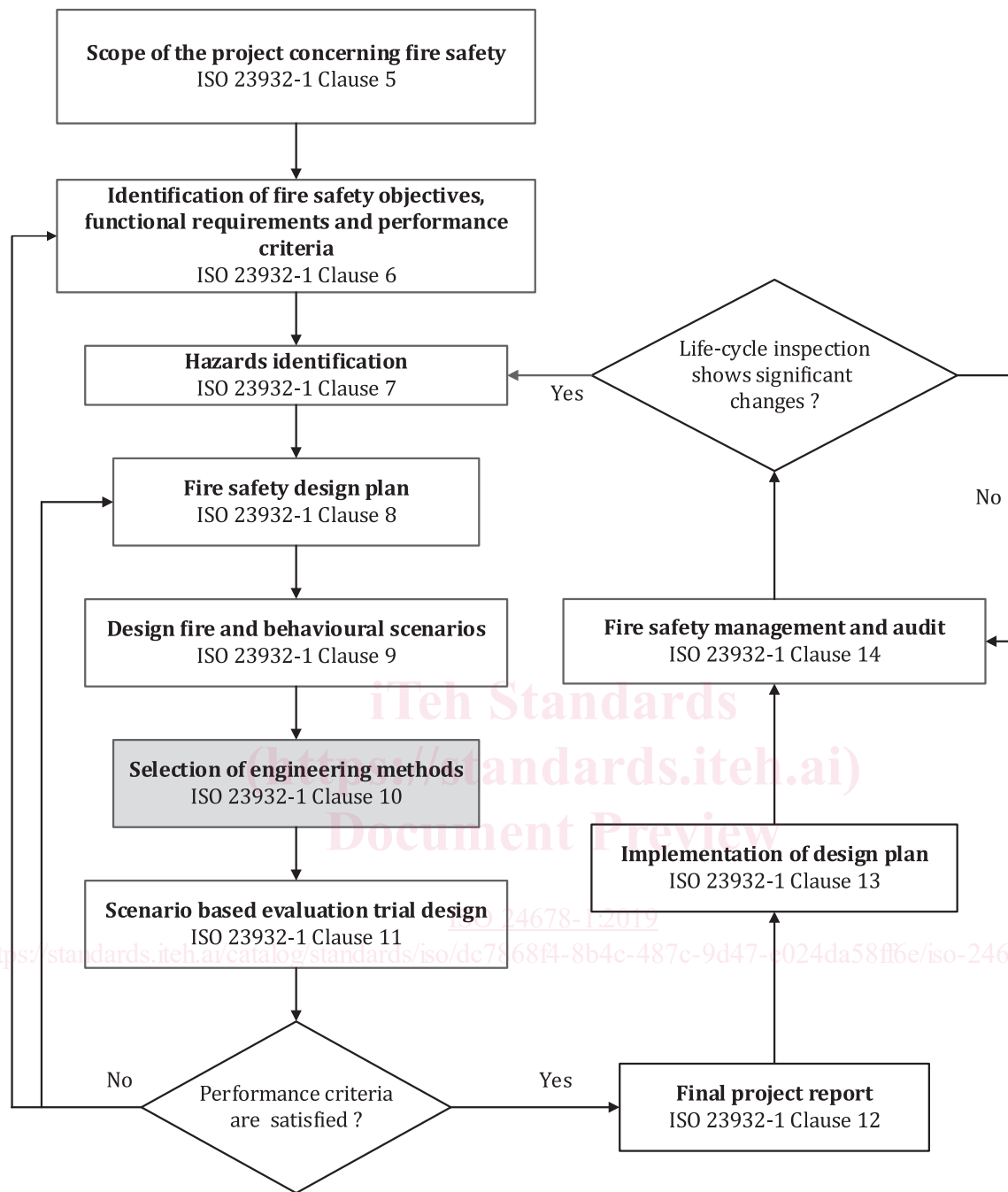


Figure 1 — Fire-safety engineering process: Design, implementation and maintenance flowchart (from ISO 23932-1:2018)