

**SLOVENSKI STANDARD**  
**oSIST prEN ISO 10140-1:2020**  
**01-september-2020**

---

**Akustika - Laboratorijsko merjenje zvočne izolirnosti gradbenih elementov - 1. del:  
Pravila uporabe za določene proizvode (ISO/DIS 10140-1:2020)**

Acoustics - Laboratory measurement of sound insulation of building elements - Part 1:  
Application rules for specific products (ISO/DIS 10140-1:2020)

Akustik - Messung der Schalldämmung von Bauteilen im Prüfstand - Teil 1:  
Anwendungsregeln für bestimmte Produkte (ISO/DIS 10140-1:2020)

Acoustique - Mesurage en laboratoire de l'isolation acoustique des éléments de  
construction - Partie 1: Règles d'application pour produits particuliers (ISO/DIS 10140-  
1:2020)

[https://standards.iteh.ai/catalog/standards/sist/30eb6d3f-39d6-465c-b302-  
cc569089f8eb/ksist-fpren-iso-10140-1-2021](https://standards.iteh.ai/catalog/standards/sist/30eb6d3f-39d6-465c-b302-cc569089f8eb/ksist-fpren-iso-10140-1-2021)

**Ta slovenski standard je istoveten z: prEN ISO 10140-1**

---

**ICS:**

17.140.01	Akustična merjenja in blaženje hrupa na splošno	Acoustic measurements and noise abatement in general
91.060.01	Stavbni elementi na splošno	Elements of buildings in general
91.120.20	Akustika v stavbah. Zvočna izolacija	Acoustics in building. Sound insulation

**oSIST prEN ISO 10140-1:2020**

**en,fr,de**

**iTeh STANDARD PREVIEW**  
**(standards.iteh.ai)**

[kSIST FprEN ISO 10140-1:2021](https://standards.iteh.ai/catalog/standards/sist/30eb6d3f-39d6-465c-b302-cc569089f8eb/ksist-fpren-iso-10140-1-2021)

<https://standards.iteh.ai/catalog/standards/sist/30eb6d3f-39d6-465c-b302-cc569089f8eb/ksist-fpren-iso-10140-1-2021>

# DRAFT INTERNATIONAL STANDARD

## ISO/DIS 10140-1

ISO/TC 43/SC 2

Secretariat: DIN

Voting begins on:  
2020-06-19Voting terminates on:  
2020-09-11

---

---

## Acoustics — Laboratory measurement of sound insulation of building elements —

### Part 1: Application rules for specific products

*Acoustique — Mesurage en laboratoire de l'isolation acoustique des éléments de construction —  
Partie 1: Règles d'application pour produits particuliers*

ICS: 91.120.20

## iTeh STANDARD PREVIEW (standards.iteh.ai)

[kSIST FprEN ISO 10140-1:2021](https://standards.iteh.ai/catalog/standards/sist/30eb6d3f-39d6-465c-b302-cc569089f8eb/ksist-fpren-iso-10140-1-2021)<https://standards.iteh.ai/catalog/standards/sist/30eb6d3f-39d6-465c-b302-cc569089f8eb/ksist-fpren-iso-10140-1-2021>

THIS DOCUMENT IS A DRAFT CIRCULATED FOR COMMENT AND APPROVAL. IT IS THEREFORE SUBJECT TO CHANGE AND MAY NOT BE REFERRED TO AS AN INTERNATIONAL STANDARD UNTIL PUBLISHED AS SUCH.

IN ADDITION TO THEIR EVALUATION AS BEING ACCEPTABLE FOR INDUSTRIAL, TECHNOLOGICAL, COMMERCIAL AND USER PURPOSES, DRAFT INTERNATIONAL STANDARDS MAY ON OCCASION HAVE TO BE CONSIDERED IN THE LIGHT OF THEIR POTENTIAL TO BECOME STANDARDS TO WHICH REFERENCE MAY BE MADE IN NATIONAL REGULATIONS.

RECIPIENTS OF THIS DRAFT ARE INVITED TO SUBMIT, WITH THEIR COMMENTS, NOTIFICATION OF ANY RELEVANT PATENT RIGHTS OF WHICH THEY ARE AWARE AND TO PROVIDE SUPPORTING DOCUMENTATION.

This document is circulated as received from the committee secretariat.

**ISO/CEN PARALLEL PROCESSING**



Reference number  
ISO/DIS 10140-1:2020(E)

© ISO 2020

## iTeh STANDARD PREVIEW (standards.iteh.ai)

[kSIST FprEN ISO 10140-1:2021](https://standards.iteh.ai/catalog/standards/sist/30eb6d3f-39d6-465c-b302-cc569089f8eb/ksist-fpren-iso-10140-1-2021)

<https://standards.iteh.ai/catalog/standards/sist/30eb6d3f-39d6-465c-b302-cc569089f8eb/ksist-fpren-iso-10140-1-2021>



### **COPYRIGHT PROTECTED DOCUMENT**

© ISO 2020

All rights reserved. Unless otherwise specified, or required in the context of its implementation, no part of this publication may be reproduced or utilized otherwise in any form or by any means, electronic or mechanical, including photocopying, or posting on the internet or an intranet, without prior written permission. Permission can be requested from either ISO at the address below or ISO's member body in the country of the requester.

ISO copyright office  
CP 401 • Ch. de Blandonnet 8  
CH-1214 Vernier, Geneva  
Phone: +41 22 749 01 11  
Fax: +41 22 749 09 47  
Email: [copyright@iso.org](mailto:copyright@iso.org)  
Website: [www.iso.org](http://www.iso.org)

Published in Switzerland

# Contents

	Page
Foreword.....	iv
Introduction.....	v
<b>1 Scope</b> .....	<b>1</b>
<b>2 Normative references</b> .....	<b>1</b>
<b>3 General</b> .....	<b>1</b>
<b>4 Structure of application rules for specific products</b> .....	<b>2</b>
<b>Annex A (normative) Walls — Airborne sound insulation</b> .....	<b>3</b>
<b>Annex B (normative) Doors — Airborne sound insulation</b> .....	<b>5</b>
<b>Annex C (normative) Windows — Airborne sound insulation</b> .....	<b>6</b>
<b>Annex D (normative) Glazing — Airborne sound insulation</b> .....	<b>8</b>
<b>Annex E (normative) Small technical elements — Airborne sound insulation</b> .....	<b>15</b>
<b>Annex F (normative) Floors — Airborne and impact sound insulation</b> .....	<b>19</b>
<b>Annex G (normative) Acoustical linings — Improvement of airborne sound insulation</b> .....	<b>20</b>
<b>Annex H (normative) Floor coverings — Improvement of impact sound insulation</b> .....	<b>22</b>
<b>Annex I (normative) Shutters — Airborne sound insulation</b> .....	<b>31</b>
<b>Annex J (normative) Joints filled with fillers or seals — Sound reduction index</b> .....	<b>36</b>
<b>Annex K (normative) Roofs, roof/ceiling systems, roof windows/skylights, rooflights — Rainfall sound</b> .....	<b>46</b>
<b>Bibliography</b> .....	<b>51</b>

[ksIST FprEN ISO 10140-1:2021](https://standards.iteh.ai/catalog/standards/sist/30eb0d3f-39d6-465c-b302-cc569089f8eb/ksist-fpren-iso-10140-1-2021)

<https://standards.iteh.ai/catalog/standards/sist/30eb0d3f-39d6-465c-b302-cc569089f8eb/ksist-fpren-iso-10140-1-2021>

## ISO/DIS 10140-1:2020(E)

### Foreword

ISO (the International Organization for Standardization) is a worldwide federation of national standards bodies (ISO member bodies). The work of preparing International Standards is normally carried out through ISO technical committees. Each member body interested in a subject for which a technical committee has been established has the right to be represented on that committee. International organizations, governmental and non-governmental, in liaison with ISO, also take part in the work. ISO collaborates closely with the International Electrotechnical Commission (IEC) on all matters of electrotechnical standardization.

The procedures used to develop this document and those intended for its further maintenance are described in the ISO/IEC Directives, Part 1. In particular, the different approval criteria needed for the different types of ISO documents should be noted. This document was drafted in accordance with the editorial rules of the ISO/IEC Directives, Part 2 (see [www.iso.org/directives](http://www.iso.org/directives)).

Attention is drawn to the possibility that some of the elements of this document may be the subject of patent rights. ISO shall not be held responsible for identifying any or all such patent rights. Details of any patent rights identified during the development of the document will be in the Introduction and/or on the ISO list of patent declarations received (see [www.iso.org/patents](http://www.iso.org/patents)).

Any trade name used in this document is information given for the convenience of users and does not constitute an endorsement.

For an explanation of the voluntary nature of standards, the meaning of ISO specific terms and expressions related to conformity assessment, as well as information about ISO's adherence to the World Trade Organization (WTO) principles in the Technical Barriers to Trade (TBT), see [www.iso.org/iso/foreword.html](http://www.iso.org/iso/foreword.html).

This document was prepared by Technical Committee ISO/TC 43, *Acoustics*, Subcommittee SC 2, *Building acoustics*.

<https://standards.iteh.ai/catalog/standards/sist/30eb6d3f-39d6-465c-b302-1a56801b8e4a/iso-10140-1-2020>

This third edition cancels and replaces the second edition (ISO 10140-1:2016), which has been technically revised.

The main changes compared to the previous edition are as follows:

- normative references updated
- all references updated
- Annex G.5 “Test report” removed
- Subclause G.6.2.2 edited
- [Annex K](#) “rooflights” added

A list of all parts in the ISO 10140 series can be found on the ISO website.

Any feedback or questions on this document should be directed to the user's national standards body. A complete listing of these bodies can be found at [www.iso.org/members.html](http://www.iso.org/members.html).

## Introduction

ISO 10140 (all parts) concerns laboratory measurement of the sound insulation of building elements (see [Table 1](#)).

This part of ISO 10140 specifies the application rules for specific elements and products, including specific requirements for preparation, mounting, operating and test conditions. ISO 10140-2 and ISO 10140-3 contain the general procedures for airborne and impact sound insulation measurements, respectively, and refer to ISO 10140-4 and ISO 10140-5 where appropriate. For elements and products without a specific application rule described in this part of ISO 10140, it is possible to apply ISO 10140-2 and ISO 10140-3. ISO 10140-4 contains basic measurement techniques and processes. ISO 10140-5 contains the requirements for test facilities and equipment. For the structure of ISO 10140 (all parts), see [Table 1](#).

ISO 10140 (all parts) was created to improve the layout for laboratory measurements, ensure consistency and simplify future changes and additions regarding mounting conditions of test elements in laboratory and field measurements. It is intended for ISO 10140 (all parts) to present a well-written and arranged format for laboratory measurements.

It is intended to update this part of ISO 10140 with application rules for other products.

**Table 1 — Structure and contents of ISO 10140 (all parts)**

Relevant part of ISO 10140	Main purpose, contents and use	Detailed content
ISO 10140-1	It indicates the appropriate test procedure for elements and products. For certain types of element/product, it can contain additional and more specific instructions about quantities and test element size and about preparation, mounting and operating conditions. Where no specific details are included, the general guidelines according ISO 10140-2 and ISO 10140-3.	Appropriate references to ISO 10140-2 and ISO 10140-3 and product-related, specific and additional instructions on: <ul style="list-style-type: none"> <li>— specific quantities measured;</li> <li>— size of test element;</li> <li>— boundary and mounting conditions;</li> <li>— conditioning, testing and operating conditions;</li> <li>— additional specifics for test report.</li> </ul>
ISO 10140-2	It gives a complete procedure for airborne sound insulation measurements according to ISO 10140-4 and ISO 10140-5. For products without specific application rules, it is sufficiently complete and general for the execution of measurements. However, for products with specific application rules, measurements are carried out according to ISO 10140-1, if available.	<ul style="list-style-type: none"> <li>— Definitions of main quantities measured</li> <li>— General mounting and boundary conditions</li> <li>— General measurement procedure</li> <li>— Data processing</li> <li>— Test report (general points)</li> </ul>
ISO 10140-3	It gives a complete procedure for impact sound insulation measurements according to ISO 10140-4 and ISO 10140-5. For products without specific application rules, it is sufficiently complete and general for the execution of measurements. However, for products with specific application rules, measurements are carried out according to ISO 10140-1, if available.	<ul style="list-style-type: none"> <li>— Definitions of main quantities measured</li> <li>— General mounting and boundary conditions</li> <li>— General measurement procedure</li> <li>— Data processing</li> <li>— Test report (general points)</li> </ul>

## ISO/DIS 10140-1:2020(E)

Table 1 (continued)

Relevant part of ISO 10140	Main purpose, contents and use	Detailed content
ISO 10140-4	It gives all the basic measurement techniques and processes for measurement according to ISO 10140-2 and ISO 10140-3 or facility qualifications according to ISO 10140-5. Much of the content is implemented in software.	<ul style="list-style-type: none"> <li>— Definitions</li> <li>— Frequency range</li> <li>— Microphone positions</li> <li>— SPL measurements</li> <li>— Averaging, space and time</li> <li>— Correction for background noise</li> <li>— Reverberation time measurements</li> <li>— Loss factor measurements</li> <li>— Low-frequency measurements</li> <li>— Radiated sound power by velocity measurement</li> </ul>
ISO 10140-5	It specifies all information needed to design, construct and qualify the laboratory facility, its additional accessories and measurement equipment (hardware).	<p>Test facilities, design criteria:</p> <ul style="list-style-type: none"> <li>— volumes, dimensions;</li> <li>— flanking transmission;</li> <li>— laboratory loss factor;</li> <li>— maximum achievable sound reduction index;</li> <li>— reverberation time;</li> <li>— influence of lack of diffusivity in the laboratory.</li> </ul> <p>Test openings:</p> <ul style="list-style-type: none"> <li>— standard openings for walls and floors;</li> <li>— other openings (windows, doors, small technical elements);</li> <li>— filler walls in general.</li> </ul> <p>Requirements for equipment:</p> <ul style="list-style-type: none"> <li>— loudspeakers, number, positions;</li> <li>— tapping machine and other impact sources;</li> <li>— measurement equipment.</li> </ul> <p>Reference constructions:</p> <ul style="list-style-type: none"> <li>— basic elements for airborne and impact insulation improvement;</li> <li>— corresponding reference performance curves.</li> </ul>



# Acoustics — Laboratory measurement of sound insulation of building elements —

## Part 1: Application rules for specific products

### 1 Scope

This part of ISO 10140 specifies test requirements for building elements and products, including detailed requirements for preparation, mounting, operating and test conditions, as well as applicable quantities and additional test information for reporting. The general procedures for airborne and impact sound insulation measurements are given in ISO 10140-2 and ISO 10140-3, respectively.

### 2 Normative references

The following documents, in whole or in part, are normatively referenced in this document and are indispensable for its application. For dated references, only the edition cited applies. For undated references, the latest edition of the referenced document (including any amendments) applies.

ISO 717-1, *Acoustics — Rating of sound insulation in buildings and of building elements — Part 1: Airborne sound insulation*

ISO/DIS 10140-2:2020, *Acoustics — Laboratory measurement of sound insulation of building elements — Part 2: Measurement of airborne sound insulation*

ISO/DIS 10140-3:2020, *Acoustics — Laboratory measurement of sound insulation of building elements — Part 3: Measurement of impact sound insulation*

ISO/DIS 10140-4:2020, *Acoustics — Laboratory measurement of sound insulation of building elements — Part 4: Measurement procedures and requirements*

ISO/DIS 10140-5:2020, *Acoustics — Laboratory measurement of sound insulation of building elements — Part 5: Requirements for test facilities and equipment*

ISO 12999-1, *Acoustics — Determination and application of measurement uncertainties in building acoustics — Part 1: Sound insulation*

ISO 16940, *Glass in building — Glazing and airborne sound insulation — Measurement of the mechanical impedance of laminated glass*

EN 572-1, *Glass in building — Basic soda lime silicate glass products — Part 1: Definitions and general physical and mechanical properties*

EN 572-2, *Glass in building — Basic soda lime silicate glass products — Part 2: Float glass*

### 3 General

General requirements regarding boundary conditions and mounting of the test element in the laboratory are specified in ISO 10140-2, ISO 10140-3 and ISO 10140-5. Additional and more detailed

## ISO/DIS 10140-1:2020(E)

requirements regarding preparation, mounting and operating conditions, and conditioning are given in [Annexes A, B, C, D, E, F, G, H, I, J](#) and [K](#).

NOTE For products which are not covered by [Annexes A, B, C, D, E, F, G, H, I, J](#) or [K](#), a new annex can be added, based on available knowledge and practice. The preferred structure of annexes is specified in [Clause 4](#).

When testing in accordance with ISO 10140 (all parts), this part of ISO 10140 shall always be checked for requirements relating to specific elements and products. The basic conditions specified in ISO 10140-2 or ISO 10140-3 shall always be followed.

### 4 Structure of application rules for specific products

To extend or update the [Annexes A, B, C, D, E, F, G, H, I, J](#) and [K](#), or to prepare a new annex with application rules for specific products, the required contents are listed below. For some elements or products, certain items might not be relevant. The purpose is to describe boundary, mounting and operating conditions for specific elements, products or groups of products.

- a) Application:
  - 1) definition of the element/product it applies to;
  - 2) quantities measured (if needed);
  - 3) reference to test method(s).
- b) Test element:
  - 1) size of the test opening and the test element;
  - 2) number of test elements.
- c) Boundary and mounting conditions (should be applied before installation):
  - 1) boundary conditions, e.g. filler wall, element boundaries;
  - 2) mounting positions;
  - 3) installation of the test element in the test opening.
- d) Test and operating conditions (should be applied after installation):
  - 1) operating conditions, e.g. open/close before test;
  - 2) conditioning/curing/drying;
  - 3) loading;
  - 4) environmental conditions.
- e) Test report.
- f) Additional information: if necessary, any information additional to the information that is required in basic ISO 10140-2 and ISO 10140-3.

## Annex A (normative)

### Walls — Airborne sound insulation

#### A.1 General

For walls and other partitions, ISO 10140-2 is applicable. This annex is applicable to lightweight twin leaf partitions, such as those constructed of gypsum boards.

The quantity determined is the sound reduction index,  $R$ , as a function of frequency. The definition of  $R$  is given in ISO 10140-2.

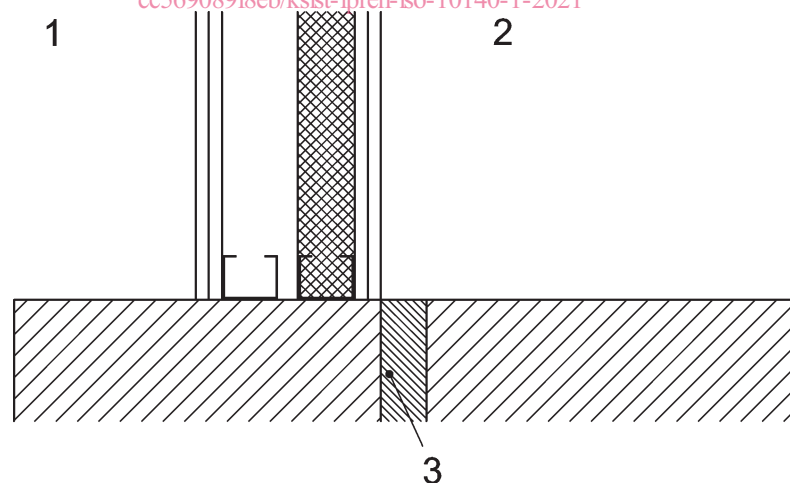
The general guidelines in the relevant clauses of the basic ISO 10140-2 shall always be followed.

#### A.2 Test element

The test opening for walls should be approximately 10 m<sup>2</sup>.

#### A.3 Boundary and mounting conditions

The sound reduction index of lightweight twin leaf partitions (e.g. twin leaf gypsum board walls) is influenced by the mounting conditions in the test opening of the laboratory. Important installation parameters include the niche depth and the position of the partition in relation to the acoustic break in the test aperture.



#### Key

- 1 source room
- 2 receiving room
- 3 acoustic break of the laboratory

**Figure A.1 — Example of the position of the test element relative to the acoustic break of the laboratory**

To improve the reproducibility between laboratories and facilitate comparison of sound reduction indices for different lightweight double walls, the twin leaf partition shall not be mounted across the

## ISO/DIS 10140-1:2020(E)

acoustic break of the laboratory, but on the same side of the break, as indicated in [Figure A.1](#). The aperture should meet the requirements in ISO 10140-2.

Other mounting conditions may be used but shall be fully described in the test report.

NOTE 1 Mounting the lightweight partition with one leaf on one side and the other leaf on the other side of the acoustic break can result in higher values for the sound reduction index.

NOTE 2 Other mounting conditions can be suitable for certain types of twin leaf walls, for example walls for semi-detached houses where the leaves are vibrationally uncoupled (for example on separate foundations). In such cases, the wall leaves can be mounted on each side of the acoustic break.

### A.4 Test and operating conditions

The test and operating conditions are given in ISO 10140-2.

### A.5 Test report

The test report is given in ISO 10140-2.

## iTeh STANDARD PREVIEW (standards.iteh.ai)

[kSIST FprEN ISO 10140-1:2021](#)

<https://standards.iteh.ai/catalog/standards/sist/30eb6d3f-39d6-465c-b302-cc569089f8eb/ksist-fpren-iso-10140-1-2021>

## Annex B (normative)

### Doors — Airborne sound insulation

#### B.1 General

This annex is applicable to internal and external doors (including door sets).

The quantity determined is the sound reduction index,  $R$ , as a function of frequency. The definition of  $R$  is given in ISO 10140-2.

The general guidelines in the relevant clauses of the basic ISO 10140-2 shall always be followed.

NOTE For a definition of door, see ISO 1804 and EN 12519.

#### B.2 Test element

For most doors, a test opening with an area of less than 10 m<sup>2</sup> is needed. The area of the test element,  $S$ , is the area of the opening in the filler wall required to accommodate the door.

#### B.3 Boundary and mounting conditions

The test opening for doors shall be arranged such that the lower edge is situated near to the level of the floor of the test rooms and such that conditions in the building are reproduced. The door shall be installed for test such that it can be opened and closed in a normal manner.

#### B.4 Test and operating conditions

The door shall be opened and closed at least five times immediately before testing.

#### B.5 Test report

The test report is given in ISO 10140-2.

## Annex C (normative)

### Windows — Airborne sound insulation

#### C.1 General

This annex is applicable to windows.

The quantity determined is the sound reduction index,  $R$ , as a function of frequency. The definition of  $R$  is given in ISO 10140-2.

The general guidelines in the relevant clauses of ISO 10140-2 shall always be followed.

NOTE For a definition of window (terminology), see EN 12519.

#### C.2 Test element

The preferred dimensions of the test opening for a window are 1 250 mm × 1 500 mm as for the specific small-sized test opening described in ISO 10140-5, but variations from this size can be necessary in recognition of national building practice. For windows, the test opening may be staggered as shown in ISO/DIS 10140-5:2020, Figure 3. In the case of a window assembly, dimensions may be chosen as representative of the assembly used in practical circumstances. For windows, the area,  $S$ , is the area of the opening in the filler wall required to accommodate the test element.

<https://standards.iteh.ai/catalog/standards/sist/30eb6d3f-39d6-465c-b302-560911101/sist-fpren-iso-10140-1-2021>

#### C.3 Boundary and mounting conditions

The installation of a window assembly shall be as similar as possible to the method which would be used in practice. When the window is mounted in the test opening, the niches on both sides of the windows shall have different depths, preferably in a ratio of about 2:1, unless this conflicts with the particular design of the window. However, it is expected that results obtained with niche depths of different ratios would differ.

The gap between the window and the test opening (about 10 mm to 13 mm around the window when mounted in the test opening) should be filled with absorbing material (for example mineral wool) and made airtight using an elastic sealant on both sides or in accordance with the manufacturer's instructions.

If the test element is intended to be readily openable, it shall be installed for the test in such that a way it can be opened and closed in a normal manner.

#### C.4 Test and operating conditions

##### C.4.1 Conditioning

The sound insulation of certain glazing systems or elements, especially those incorporating laminated glass, can depend on the room temperature during the measurements. The temperature of both rooms used for measuring the sound insulation should be  $(20 \pm 3)$  °C. The test elements should be stored for 24 h at the test temperature. In addition, it can be advantageous to make measurements at temperatures similar to those for which the test element is designed.

#### **C.4.2 Operation**

If the test element is intended to be openable, it shall be opened and closed at least five times immediately before testing.

#### **C.5 Test report**

The test report is given in ISO 10140-2.

**iTeh STANDARD PREVIEW**  
**(standards.iteh.ai)**

<https://standards.iteh.ai/catalog/standards/sist/30eb6d3f-39d6-465c-b302-cc569089f8eb/ksist-fpren-iso-10140-1-2021>