
**Akustika - Laboratorijsko merjenje zvočne izolirnosti gradbenih elementov - 5. del:
Zahteve za preskusne laboratorije in opremo (ISO/DIS 10140-5:2020)**

Acoustics - Laboratory measurement of sound insulation of building elements - Part 5:
Requirements for test facilities and equipment (ISO/DIS 10140-5:2020)

Akustik - Messung der Schalldämmung von Bauteilen im Prüfstand - Teil 5:
Anforderungen an Prüfstände und Prüfeinrichtungen (ISO/DIS 10140-5:2020)

Acoustique - Mesurage en laboratoire de l'isolation acoustique des éléments de
construction - Partie 5: Exigences relatives aux installations et appareillage d'essai
(ISO/DIS 10140-5:2020)

<https://standards.iteh.ai/catalog/standards/sist/3f536b88-c554-46e4-9706-ee8a24e713fb/osist-pren-iso-10140-5-2020>

Ta slovenski standard je istoveten z: prEN ISO 10140-5

ICS:

| | | |
|-----------|---|--|
| 17.140.01 | Akustična merjenja in blaženje hrupa na splošno | Acoustic measurements and noise abatement in general |
| 91.060.01 | Stavbni elementi na splošno | Elements of buildings in general |
| 91.120.20 | Akustika v stavbah. Zvočna izolacija | Acoustics in building. Sound insulation |

oSIST prEN ISO 10140-5:2020

en,fr,de

iTeh STANDARD PREVIEW
(standards.iteh.ai)

[oSIST prEN ISO 10140-5:2020](https://standards.iteh.ai/catalog/standards/sist/3f536b88-c554-46e4-9706-ee8a24e713fb/osist-pren-iso-10140-5-2020)

<https://standards.iteh.ai/catalog/standards/sist/3f536b88-c554-46e4-9706-ee8a24e713fb/osist-pren-iso-10140-5-2020>

DRAFT INTERNATIONAL STANDARD

ISO/DIS 10140-5

ISO/TC 43/SC 2

Secretariat: DIN

Voting begins on:
2020-06-19Voting terminates on:
2020-09-11

Acoustics — Laboratory measurement of sound insulation of building elements —

Part 5: Requirements for test facilities and equipment

*Acoustique — Mesurage en laboratoire de l'isolation acoustique des éléments de construction —
Partie 5: Exigences relatives aux installations et appareillage d'essai*

ICS: 91.120.20

iTeh STANDARD PREVIEW (standards.iteh.ai)

[oSIST prEN ISO 10140-5:2020](https://standards.iteh.ai/catalog/standards/sist/3f536b88-c554-46e4-9706-ee8a24e713fb/osist-pren-iso-10140-5-2020)<https://standards.iteh.ai/catalog/standards/sist/3f536b88-c554-46e4-9706-ee8a24e713fb/osist-pren-iso-10140-5-2020>

THIS DOCUMENT IS A DRAFT CIRCULATED FOR COMMENT AND APPROVAL. IT IS THEREFORE SUBJECT TO CHANGE AND MAY NOT BE REFERRED TO AS AN INTERNATIONAL STANDARD UNTIL PUBLISHED AS SUCH.

IN ADDITION TO THEIR EVALUATION AS BEING ACCEPTABLE FOR INDUSTRIAL, TECHNOLOGICAL, COMMERCIAL AND USER PURPOSES, DRAFT INTERNATIONAL STANDARDS MAY ON OCCASION HAVE TO BE CONSIDERED IN THE LIGHT OF THEIR POTENTIAL TO BECOME STANDARDS TO WHICH REFERENCE MAY BE MADE IN NATIONAL REGULATIONS.

RECIPIENTS OF THIS DRAFT ARE INVITED TO SUBMIT, WITH THEIR COMMENTS, NOTIFICATION OF ANY RELEVANT PATENT RIGHTS OF WHICH THEY ARE AWARE AND TO PROVIDE SUPPORTING DOCUMENTATION.

This document is circulated as received from the committee secretariat.

ISO/CEN PARALLEL PROCESSING



Reference number
ISO/DIS 10140-5:2020(E)

© ISO 2020

iTeh STANDARD PREVIEW (standards.iteh.ai)

<https://standards.iteh.ai/catalog/standards/sist/3f536b88-c554-46e4-9706-ee8a24e713fb/osist-pren-iso-10140-5-2020>



COPYRIGHT PROTECTED DOCUMENT

© ISO 2020

All rights reserved. Unless otherwise specified, or required in the context of its implementation, no part of this publication may be reproduced or utilized otherwise in any form or by any means, electronic or mechanical, including photocopying, or posting on the internet or an intranet, without prior written permission. Permission can be requested from either ISO at the address below or ISO's member body in the country of the requester.

ISO copyright office
CP 401 • Ch. de Blandonnet 8
CH-1214 Vernier, Geneva
Phone: +41 22 749 01 11
Fax: +41 22 749 09 47
Email: copyright@iso.org
Website: www.iso.org

Published in Switzerland

Contents

| | Page |
|---|-----------|
| Foreword | iv |
| Introduction | v |
| 1 Scope | 1 |
| 2 Normative references | 1 |
| 3 Terms and definitions | 2 |
| 4 Laboratory test facilities for airborne sound insulation measurements | 2 |
| 4.1 General..... | 2 |
| 4.2 Test rooms..... | 2 |
| 4.2.1 Volume..... | 2 |
| 4.2.2 Diffusion..... | 2 |
| 4.2.3 Reverberation time..... | 3 |
| 4.2.4 Background noise..... | 3 |
| 4.2.5 Suppression of flanking transmission..... | 3 |
| 4.3 Test opening..... | 3 |
| 4.3.1 Full-sized test opening..... | 3 |
| 4.3.2 Reduced-size test opening..... | 5 |
| 4.3.3 Specific small-sized test opening..... | 6 |
| 5 Laboratory test facilities for impact sound insulation measurements | 8 |
| 5.1 General..... | 8 |
| 5.2 Receiving room..... | 8 |
| 5.2.1 Volume..... | 8 |
| 5.2.2 Further requirements..... | 8 |
| 5.3 Test opening..... | 8 |
| 5.3.1 Full-sized test opening..... | 8 |
| 5.3.2 Frame specification..... | 8 |
| 6 Equipment | 9 |
| 6.1 Airborne sound field..... | 9 |
| 6.2 Impact sound source..... | 9 |
| 6.3 Measurement system..... | 9 |
| Annex A (normative) Estimation of the maximum measurable sound reduction index | 11 |
| Annex B (normative) Standard basic elements for measuring the improvement of airborne sound insulation by linings | 15 |
| Annex C (normative) Standard floors for measuring the improvement of impact sound insulation by floor coverings | 16 |
| Annex D (normative) Qualification procedure for loudspeakers and loudspeaker positions | 21 |
| Annex E (normative) Standard tapping machine | 25 |
| Annex F (normative) Alternative impact sound sources | 27 |
| Annex G (normative) Wooden mock-up floor for measuring the improvement of impact sound insulation by floor coverings | 32 |
| Annex H (normative) Specification of heavy and intense rain with example of a tank with perforated base | 33 |
| Annex I (informative) Reference test specimens for rainfall sound measurements | 37 |
| Bibliography | 39 |

ISO/DIS 10140-5:2020(E)

Foreword

ISO (the International Organization for Standardization) is a worldwide federation of national standards bodies (ISO member bodies). The work of preparing International Standards is normally carried out through ISO technical committees. Each member body interested in a subject for which a technical committee has been established has the right to be represented on that committee. International organizations, governmental and non-governmental, in liaison with ISO, also take part in the work. ISO collaborates closely with the International Electrotechnical Commission (IEC) on all matters of electrotechnical standardization.

The procedures used to develop this document and those intended for its further maintenance are described in the ISO/IEC Directives, Part 1. In particular the different approval criteria needed for the different types of ISO documents should be noted. This document was drafted in accordance with the editorial rules of the ISO/IEC Directives, Part 2 (see www.iso.org/directives).

Attention is drawn to the possibility that some of the elements of this document may be the subject of patent rights. ISO shall not be held responsible for identifying any or all such patent rights. Details of any patent rights identified during the development of the document will be in the Introduction and/or on the ISO list of patent declarations received (see www.iso.org/patents).

Any trade name used in this document is information given for the convenience of users and does not constitute an endorsement.

For an explanation on the voluntary nature of standards, the meaning of ISO specific terms and expressions related to conformity assessment, as well as information about ISO's adherence to the World Trade Organization (WTO) principles in the Technical Barriers to Trade (TBT) see the following URL: www.iso.org/iso/foreword.html. (standards.iteh.ai)

This document was prepared by Technical Committee ISO/TC 43, *Acoustics*, Subcommittee SC 2, *Building acoustics*.

<https://standards.iteh.ai/catalog/standards/sist/3f536b88-c554-46e4-9706-c81b4113160e/iso-10140-5-2020>

This second edition cancels and replaces the first edition (ISO 10140-5:2010), which has been technically revised.

It also incorporates the Amendment ISO 10140-5:2010/Amd1:2014.

The main changes compared to the previous edition are as follows:

- normative references updated
- terms and definitions added
- all references updated
- [Annex B](#), [Annex C](#) and [Annex H](#) updated

A list of all parts in the ISO 10140 series can be found on the ISO website.

Any feedback or questions on this document should be directed to the user's national standards body. A complete listing of these bodies can be found at www.iso.org/members.html.

Introduction

ISO 10140 (all parts) concerns laboratory measurement of the sound insulation of building elements (see [Table 1](#)).

ISO 10140-1 specifies the application rules for specific elements and products, including specific requirements for preparation, mounting, operating and test conditions. ISO 10140-2 and ISO 10140-3 contain the general procedures for airborne and impact sound insulation measurements, respectively, and refer to ISO 10140-4 and this part of ISO 10140 where appropriate. For elements and products without a specific application rule described in ISO 10140-1, it is possible to apply ISO 10140-2 and ISO 10140-3. ISO 10140-4 contains basic measurement techniques and processes. This part of ISO 10140 contains requirements for test facilities and equipment. For the structure of ISO 10140 (all parts), see [Table 1](#).

ISO 10140 (all parts) was created to improve the layout for laboratory measurements, ensure consistency and simplify future changes and additions regarding mounting conditions of test elements in laboratory and field measurements. It is intended for ISO 10140 (all parts) to present a well-written and arranged format for laboratory measurements.

It is intended to update ISO 10140-1 with application rules for other products.

Table 1 — Structure and contents of ISO 10140 (all parts)

| Relevant part of ISO 10140 | Main purpose, contents and use | Detailed content |
|----------------------------|---|---|
| ISO 10140-1 | It indicates the appropriate test procedure for elements and products. For certain types of element/product, it can contain additional and more specific instructions about quantities and test element size and about preparation, mounting and operating conditions. Where no specific details are included, the general guidelines are according to ISO 10140-2 and ISO 10140-3. | Appropriate references to ISO 10140-2 and ISO 10140-3 and product-related, specific and additional instructions on: <ul style="list-style-type: none"> — specific quantities measured; — size of test element; — boundary and mounting conditions; — conditioning, testing and operating conditions; — additional specifics for test report. |
| ISO 10140-2 | It gives a complete procedure for airborne sound insulation measurements according to ISO 10140-4 and ISO 10140-5. For products without specific application rules, it is sufficiently complete and general for the execution of measurements. However, for products with specific application rules, measurements are carried out according to ISO 10140-1, if available. | <ul style="list-style-type: none"> — Definitions of main quantities measured — General mounting and boundary conditions — General measurement procedure — Data processing — Test report (general points) |
| ISO 10140-3 | It gives a complete procedure for impact sound insulation measurements according to ISO 10140-4 and ISO 10140-5. For products without specific application rules, it is sufficiently complete and general for the execution of measurements. However, for products with specific application rules, measurements are carried out according to ISO 10140-1, if available. | <ul style="list-style-type: none"> — Definitions of main quantities measured — General mounting and boundary conditions — General measurement procedure — Data processing — Test report (general points) |

ISO/DIS 10140-5:2020(E)

Table 1 (continued)

| Relevant part of ISO 10140 | Main purpose, contents and use | Detailed content |
|----------------------------|---|--|
| ISO 10140-4 | It gives all the basic measurement techniques and processes for measurement according to ISO 10140-2 and ISO 10140-3 or facility qualifications according to ISO 10140-5. Much of the content is implemented in software. | <ul style="list-style-type: none"> — Definitions — Frequency range — Microphone positions — SPL measurements — Averaging, space and time — Correction for background noise — Reverberation time measurements — Loss factor measurements — Low-frequency measurements — Radiated sound power by velocity measurement |
| ISO 10140-5 | It specifies all information needed to design, construct and qualify the laboratory facility, its additional accessories and measurement equipment (hardware). | <p>Test facilities, design criteria:</p> <ul style="list-style-type: none"> — volumes, dimensions; — flanking transmission; — laboratory loss factor; — maximum achievable sound reduction index; — reverberation time; — influence of lack of diffusivity in the laboratory. <p>Test openings:</p> <ul style="list-style-type: none"> — standard openings for walls and floors; — other openings (windows, doors, small technical elements); — filler walls in general. <p>Requirements for equipment:</p> <ul style="list-style-type: none"> — loudspeakers, number, positions; — tapping machine and other impact sources; — measurement equipment. <p>Reference constructions:</p> <ul style="list-style-type: none"> — basic elements for airborne and impact insulation improvement; — corresponding reference performance curves. |

Acoustics — Laboratory measurement of sound insulation of building elements —

Part 5: Requirements for test facilities and equipment

1 Scope

This part of ISO 10140 specifies laboratory test facilities and equipment for sound insulation measurements of building elements, such as:

- components and materials;
- building elements;
- technical elements (small building elements);
- sound insulation improvement systems.

It is applicable to laboratory test facilities with suppressed radiation from flanking elements and structural isolation between source and receiving rooms.

This part of ISO 10140 specifies qualification procedures for use when commissioning a new test facility with equipment for sound insulation measurements. It is intended that these procedures be repeated periodically to ensure that there are no issues with the equipment and the test facility.

<https://standards.iteh.ai/catalog/standards/sist/3f536b88-c554-46e4-9706-ee8a24e713fb/osist-pren-iso-10140-5-2020>

2 Normative references

The following documents, in whole or in part, are normatively referenced in this document and are indispensable for its application. For dated references, only the edition cited applies. For undated references, the latest edition of the referenced document (including any amendments) applies.

ISO 717-1, *Acoustics — Rating of sound insulation in buildings and of building elements — Part 1: Airborne sound insulation*

ISO 717-2, *Acoustics — Rating of sound insulation in buildings and of building elements — Part 2: Impact sound insulation*

ISO 3382-2, *Acoustics — Measurement of room acoustic parameters — Part 2: Reverberation time in ordinary rooms*

ISO 9052-1:1989, *Acoustics — Determination of dynamic stiffness — Part 1: Materials used under floating floors in dwellings*

ISO/DIS 10140-1:2020, *Acoustics — Laboratory measurement of sound insulation of building elements — Part 1: Application rules for specific products*

ISO 10140-2, *Acoustics — Laboratory measurement of sound insulation of building elements — Part 2: Measurement of airborne sound insulation*

ISO 10140-3, *Acoustics — Laboratory measurement of sound insulation of building elements — Part 3: Measurement of impact sound insulation*

ISO 10140-4, *Acoustics — Laboratory measurement of sound insulation of building elements — Part 4: Measurement procedures and requirements*

ISO/DIS 10140-5:2020(E)

ISO 18233, *Acoustics — Application of new measurement methods in building and room acoustics*

IEC 60942, *Electroacoustics — Sound calibrators*

IEC 61260-1, *Electroacoustics — Octave-band and fractional-octave-band filters — Part 1: Specifications*

IEC 61672-1, *Electroacoustics — Sound level meters — Part 1: Specifications*

IEC 61672-2, *Electroacoustics — Sound level meters — Part 2: Pattern evaluation tests*

IEC 61672-3, *Electroacoustics — Sound level meters — Part 3: Periodic tests*

3 Terms and definitions

No terms and definitions are listed in this document.

ISO and IEC maintain terminological databases for use in standardization at the following addresses:

- IEC Electropedia: available at <http://www.electropedia.org/>
- ISO Online browsing platform: available at <https://www.iso.org/obp>

4 Laboratory test facilities for airborne sound insulation measurements**4.1 General**

The laboratory test facility shall consist of two adjacent reverberant rooms with a test opening between them, in which the test element is inserted.

The area of the test opening can vary depending on the type of test element. This part of ISO 10140 defines full-sized test openings, a specific small-sized test opening and alternative reduced-size test openings.

For measurement of the improvement of sound reduction index by acoustical linings, these rooms shall be separated by a standard basic element on which the lining under test is installed (see [Annex B](#)).

4.2 Test rooms**4.2.1 Volume**

The volumes of the test rooms shall be at least 50 m³. Volumes and corresponding dimensions of the two test rooms should not be exactly the same. A difference of at least 10 % in room volumes and in the linear dimensions is recommended.

Choose the ratios of the room dimensions such that the eigen mode frequencies in the low-frequency bands are spaced as uniformly as possible.

When measuring the sound insulation of walls or floors, theoretical calculation as well as experiments have indicated that the test element should cover a total partition wall or ceiling of the test room, i.e. the test opening should extend from wall to wall and from floor to ceiling. In such a case, a volume of 50 m³ to 60 m³ is appropriate in view of the recommended size of the test opening.

4.2.2 Diffusion

Large variations of the sound pressure level in the room indicate the presence of dominating strong standing waves. In this case, diffusing elements shall be installed in the rooms. The positioning and

number of diffusing elements should be arranged in such a way that the sound reduction index is not influenced when further diffusing elements are installed.

NOTE For some kinds of test element, as for elements with one surface significantly more absorbent than the other (see ISO 10140-2), the installation of diffusing elements is mandatory.

4.2.3 Reverberation time

The reverberation time in the rooms under normal test conditions (with negligible absorption by the test element) should not be excessively long or short. When the reverberation time at frequencies at and above 100 Hz exceeds 2 s or is less than 1 s, check whether the measured sound reduction index depends on the reverberation time. When such a dependence is found, even with diffusers in the rooms, the rooms shall be modified to adjust the reverberation time, T , such that:

$$1 \leq T \leq 2(V/50)^{2/3} \quad (1)$$

where

V is the value of the room volume, in cubic metres;

T is the reverberation time, in seconds.

Measurement of the reverberation time is given in ISO 10140-4.

4.2.4 Background noise

The background noise level in the receiving room shall be sufficiently low to permit measurements of the sound transmitted from the source room, considering the power output in the source room and the sound insulation of the test elements for which the laboratory is intended (see ISO/DIS 10140-4:2020, 4.3).

<https://standards.iteh.ai/catalog/standards/sist/3f536b88-c554-46e4-9706-10870471328/sist-pr-en-iso-10140-5-2020>

4.2.5 Suppression of flanking transmission

In laboratory test facilities designed for measuring the sound reduction index, the sound transmitted by any indirect path should be negligible compared with the sound transmitted through the test element. One approach to achieve this in such facilities is to provide sufficient structural isolation between source and receiving rooms. Another approach is to cover all surfaces of both rooms with linings that reduce the flanking transmission in such a way that the requirements on room volumes and reverberation times are still met.

[Annex A](#) gives methods for estimating the maximum achievable sound reduction index, R'_{\max} , which is determined by indirect paths.

4.3 Test opening

A horizontal and a vertical full-sized test opening, as well as a specific vertical small-sized test opening are defined. Other reduced-size test openings may be applied under certain restrictions.

4.3.1 Full-sized test opening

The area of the full-sized test opening shall be approximately 10 m² for walls, and between 10 m² and 20 m² for floors, with the length of the shorter edge being not less than 2,3 m for both walls and floors.

4.3.1.1 General frame specification

The measured sound reduction index of a test element can be affected by the connections to the laboratory structure surrounding the element. The mass ratio of the tested structure to the surrounding structure should be taken into consideration. For tests on lightweight structures ($m < 150 \text{ kg/m}^2$),

ISO/DIS 10140-5:2020(E)

there are no special requirements to be taken into account. For heavier structures under test, it should be ensured that the loss factor, η , of the test element is not less than that given by [Equation \(2\)](#):

$$\eta_{\min} = 0,01 + \frac{0,3}{\sqrt{f}} \quad (2)$$

where

f is the test frequency value, in hertz.

To check this requirement, use as the test element a brick or block wall having a mass of (400 ± 40) kg/m² plastered on one side. Measurement of the loss factor is given in ISO 10140-4.

4.3.1.2 Specific requirements on the frame for lightweight twin-leaf partitions

With lightweight twin-leaf partitions, the sound reduction index is affected by vibration transmission between the wall leaves via the frame of the test opening (see [Figure 1](#)). This is influenced by the mounting conditions in the laboratory test opening and by the material properties and dimensions of the frame(s). Vibration transmission between the coupled structures of the partition itself (e.g. common or coupled studs) is dependent on the specific construction of the partition and is a property of the test element itself. This vibration transmission is not treated in this part of ISO 10140.

In order to improve the reproducibility of the sound reduction index between laboratories for walls, guidance is given for the mass per unit area of the frame of the test opening. If there is an acoustic break in the laboratory test opening, the frame on one side of that break should be considered. The mass per unit area of the frame shall be much larger than the mass per unit area of the heaviest leaf of the double partition. The ratio of the mass per unit area of the heaviest leaf of the double partition to that of the frame of the test opening shall be at least 1 : 6. The minimum thickness of the frame should be 100 mm and the minimum depth should be 200 mm. The frame shall have a density of at least 2 000 kg/m³. The cross-sectional surface mass shall be more than 450 kg/m². In addition, the frame(s) shall consist of a homogeneous, massive construction, such as dense concrete or masonry. Wood or metal frames connecting the two leaves shall not be used.

The surface mass per unit area is calculated from the density, ρ , and the thickness, t , of the elements, as shown in [Figure 2](#), using [Equations \(3\)](#) and [\(4\)](#):

$$m'_L = \rho_L t_L \quad (3)$$

where

m'_L is the mass per unit area of the test facility wall, in kilograms per square metre;

ρ_L is the density of the test facility wall, in kilograms per cubic metre;

t_L is the thickness of the test facility wall, in metres.

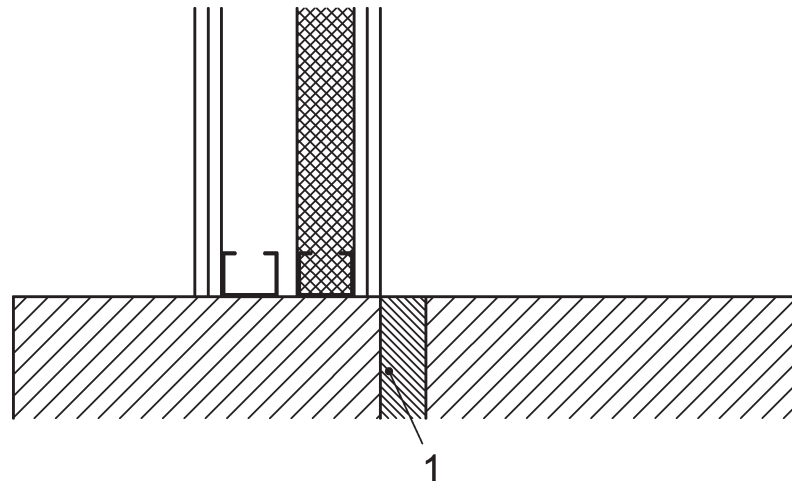
$$m'_e = \rho_e t_e \quad (4)$$

where

m'_e is the mass per unit area of the element, in kilograms per square metre;

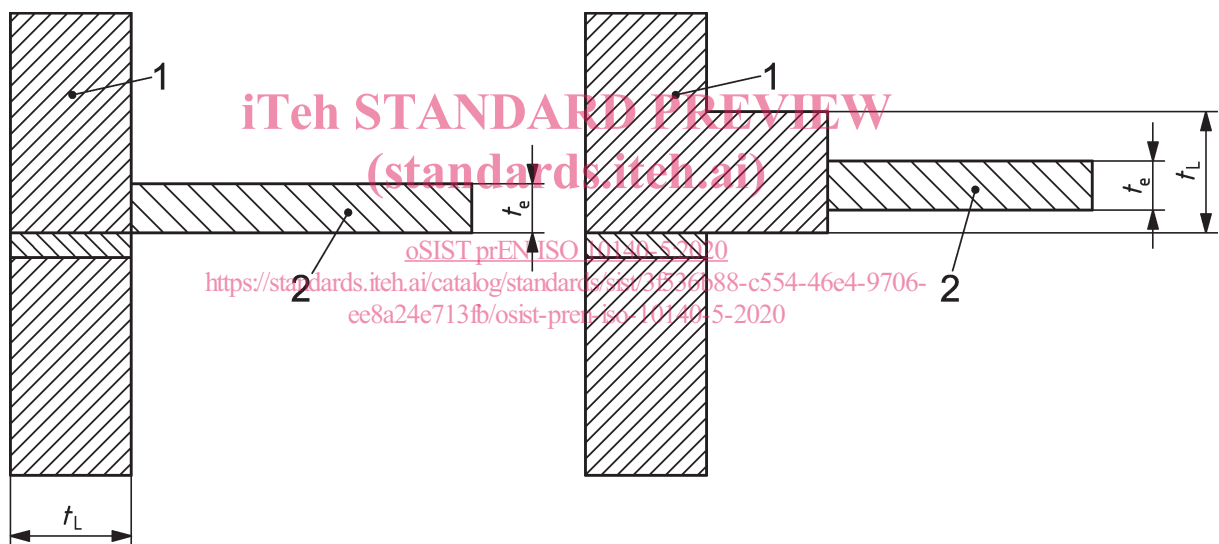
ρ_e is the density of the element, in kilograms per cubic metre;

t_e is the thickness of the element, in metres.

**Key**

- 1 frame of the test opening

Figure 1 — Vibration transmission across the border frame of the test opening

**Key**

- 1 test facility wall
 2 element under test
 t_L thickness of the test facility wall
 t_e thickness of the test element

Figure 2 — Determination of the mass per unit area of the elements

4.3.2 Reduced-size test opening

The test opening may have a reduced area:

- if the test element area is smaller than the full-sized test opening;
- if special acoustical conditions are met on the test element;
- if the test element is a small technical element.