

First edition
2013-12-15

AMENDMENT 1
2018-01

Geographic information — Data quality
AMENDMENT 1: Describing data quality
using coverages

Information géographique — Qualité des données

*AMENDEMENT 1: Décrire la qualité des données en utilisant les
couvertures*

iTeh Standards
(<https://standards.iteh.ai>)
Document Preview

ISO 19157:2013/Amd 1:2018

<https://standards.iteh.ai/catalog/standards/iso/2d9c73e7-2b18-4b3c-a8de-136593b3b7c0/iso-19157-2013-amd-1-2018>



Reference number
ISO 19157:2013/Amd.1:2018(E)

© ISO 2018

iTeh Standards
(<https://standards.iteh.ai>)
Document Preview

ISO 19157:2013/Amd 1:2018

<https://standards.iteh.ai/catalog/standards/iso/2d9c73e7-2b18-4b3c-a8de-136593b3b7c0/iso-19157-2013-amd-1-2018>



COPYRIGHT PROTECTED DOCUMENT

© ISO 2018, Published in Switzerland

All rights reserved. Unless otherwise specified, no part of this publication may be reproduced or utilized otherwise in any form or by any means, electronic or mechanical, including photocopying, or posting on the internet or an intranet, without prior written permission. Permission can be requested from either ISO at the address below or ISO's member body in the country of the requester.

ISO copyright office
Ch. de Blandonnet 8 • CP 401
CH-1214 Vernier, Geneva, Switzerland
Tel. +41 22 749 01 11
Fax +41 22 749 09 47
copyright@iso.org
www.iso.org

Foreword

ISO (the International Organization for Standardization) is a worldwide federation of national standards bodies (ISO member bodies). The work of preparing International Standards is normally carried out through ISO technical committees. Each member body interested in a subject for which a technical committee has been established has the right to be represented on that committee. International organizations, governmental and non-governmental, in liaison with ISO, also take part in the work. ISO collaborates closely with the International Electrotechnical Commission (IEC) on all matters of electrotechnical standardization.

The procedures used to develop this document and those intended for its further maintenance are described in the ISO/IEC Directives, Part 1. In particular the different approval criteria needed for the different types of ISO documents should be noted. This document was drafted in accordance with the editorial rules of the ISO/IEC Directives, Part 2 (see www.iso.org/directives).

Attention is drawn to the possibility that some of the elements of this document may be the subject of patent rights. ISO shall not be held responsible for identifying any or all such patent rights. Details of any patent rights identified during the development of the document will be in the Introduction and/or on the ISO list of patent declarations received (see www.iso.org/patents).

Any trade name used in this document is information given for the convenience of users and does not constitute an endorsement.

For an explanation on the voluntary nature of standards, the meaning of ISO specific terms and expressions related to conformity assessment, as well as information about ISO's adherence to the World Trade Organization (WTO) principles in the Technical Barriers to Trade (TBT) see the following URL: www.iso.org/iso/foreword.html.

This document was prepared by Technical Committee ISO/TC 211, *Geographic information/Geomatics*.

ISO 19157:2013/Amd 1:2018

<https://standards.iteh.ai/catalog/standards/iso/2d9c73e7-2b18-4b3c-a8de-136593b3b7c0/iso-19157-2013-amd-1-2018>

Geographic information — Data quality

AMENDMENT 1: Describing data quality using coverages

Page 1, Clause 3

Delete normative reference:

ISO 19115-2:2009, *Geographic information — Metadata — Part 2: Extensions for imagery and gridded data*

Page 1, Clause 3

Change normative reference:

ISO/TS 19103:2005, *Geographic information — Conceptual schema language*

to

ISO 19103:2015, *Geographic information — Conceptual schema language*

in Clause 3 and in all other instances throughout the document, to reflect the new version.

Page 1, Clause 3

Change normative reference:

ISO 19135:2005, *Geographic information — Procedures for item registration*

to

ISO 19135-1:2015, *Geographic information — Procedures for item registration — Part 1: Fundamentals*

in Clause 3 and in all other instances throughout the document, to reflect the new version.

Page 5, 5.2

Delete:

QE Quality Extended [ISO 19115-2:2009]

Replace Figure 2 with the following:

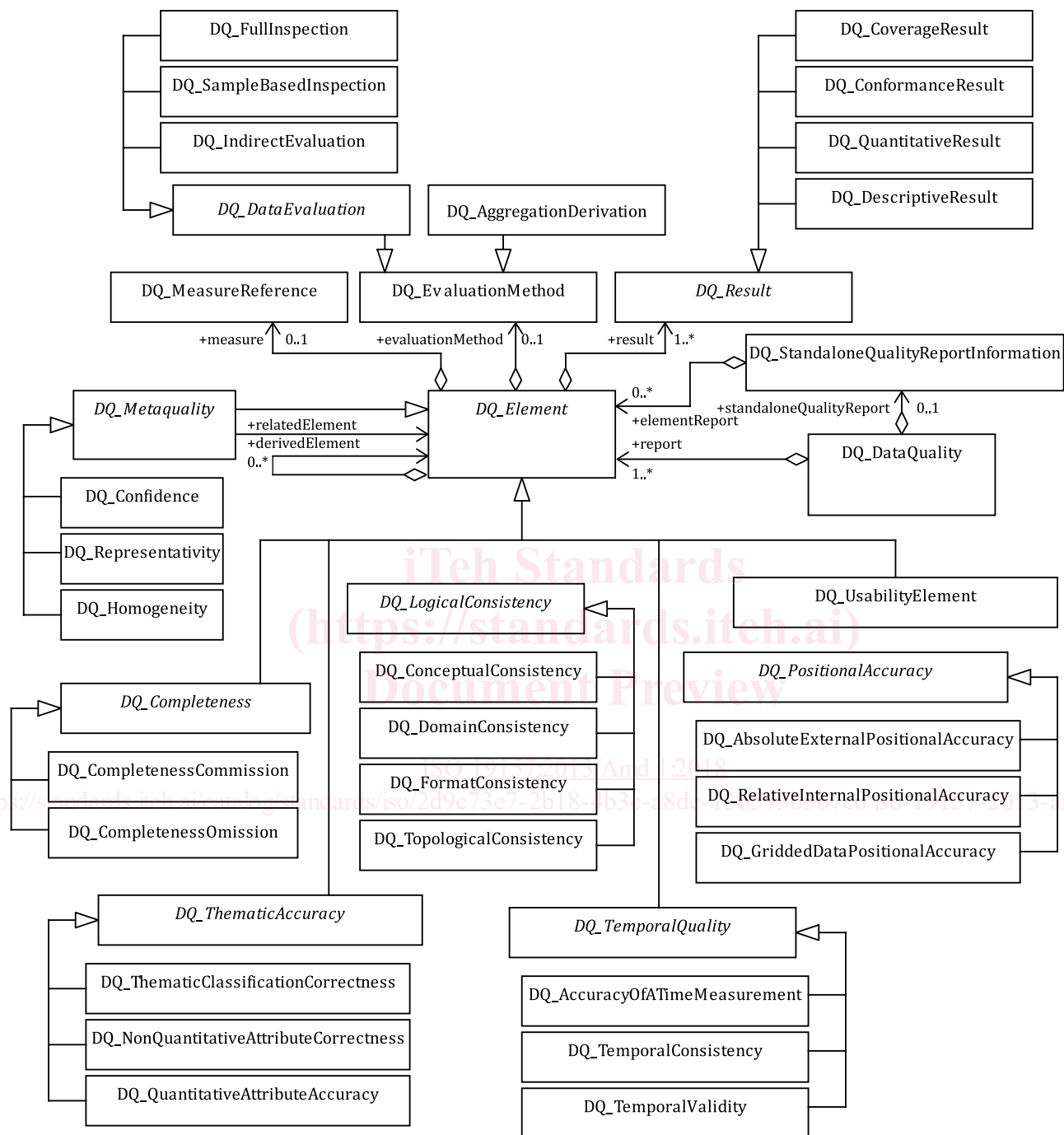


Figure 2 — Overview of the components of data quality