

INTERNATIONAL STANDARD

ISO
2332

Second edition
1993-10-15

Agricultural tractors and machinery — Connection of implements via three-point linkage — Clearance zone around implement

(<https://standards.iteh.ai>)
Document Preview

*Tracteurs et matériels agricoles — Liaison des instruments par l'attelage
trois points — Zone de dégagement autour de l'instrument*

ISO 2332:1993

<https://standards.iteh.ai/catalog/standards/iso/679c609a-1375-41cf-8c3f-0e5107cb813a/iso-2332-1993>



Reference number
ISO 2332:1993(E)

Foreword

ISO (the International Organization for Standardization) is a worldwide federation of national standards bodies (ISO member bodies). The work of preparing International Standards is normally carried out through ISO technical committees. Each member body interested in a subject for which a technical committee has been established has the right to be represented on that committee. International organizations, governmental and non-governmental, in liaison with ISO, also take part in the work. ISO collaborates closely with the International Electrotechnical Commission (IEC) on all matters of electrotechnical standardization.

Draft International Standards adopted by the technical committees are circulated to the member bodies for voting. Publication as an International Standard requires approval by at least 75 % of the member bodies casting a vote.

International Standard ISO 2332 was prepared by Technical Committee ISO/TC 23, *Tractors and machinery for agriculture and forestry*, Subcommittee SC 4, *Tractors*.

This second edition cancels and replaces the first edition (ISO 2332:1983). Two clearance zones are now specified.

ISO 2332:1993

<https://standards.iteh.ai/catalog/standards/iso/679c609a-1375-41cf-8c3f-0e5107cb813a/iso-2332-1993>

© ISO 1993

All rights reserved. No part of this publication may be reproduced or utilized in any form or by any means, electronic or mechanical, including photocopying and microfilm, without permission in writing from the publisher.

International Organization for Standardization

Case Postale 56 • CH-1211 Genève 20 • Switzerland

Printed in Switzerland

Agricultural tractors and machinery — Connection of implements via three-point linkage — Clearance zone around implement

1 Scope

This International Standard specifies the clearance zone to be maintained on implements to allow them to be attached to the three-point linkage of agricultural wheeled tractors.

It applies to the connection of agricultural implements to three-point linkages complying with ISO 730-1. It also applies where implement couplers, complying with ISO 11001-1, ISO 11001-2 and ISO 11001-3, are used.

2 Normative references

The following standards contain provisions which, through reference in this text, constitute provisions of this International Standard. At the time of publication, the editions indicated were valid. All standards are subject to revision, and parties to agreements based on this International Standard are encouraged to investigate the possibility of applying the most recent editions of the standards indicated below. Members of IEC and ISO maintain registers of currently valid International Standards.

ISO 730-1:1990, *Agricultural wheeled tractors — Rear-mounted three-point linkage — Part 1: Categories 1, 2 and 3.*

ISO 11001-1:1993, *Agricultural wheeled tractors and implements — Three-point hitch couplers — Part 1: U-frame coupler.*

ISO 11001-2:1993, *Agricultural wheeled tractors and implements — Three-point hitch couplers — Part 2: A-frame coupler.*

ISO 11001-3:1993, *Agricultural wheeled tractors and implements — Three-point hitch couplers — Part 3: Link coupler.*

3 Definition

For the purposes of this International Standard, the following definition applies.

3.1 implement coupler: Device which facilitates the connection of the tractor three-point linkage to the implement.

4 Specifications

The shape and dimensions of the clearance zone on implements for attachment to a three-point linkage shall be as shown in figures 1 to 4 and in table 1. Not included are adjustable levers and handles to operate the implement and specifications referring to the width of the implements.

Dimensions in millimetres

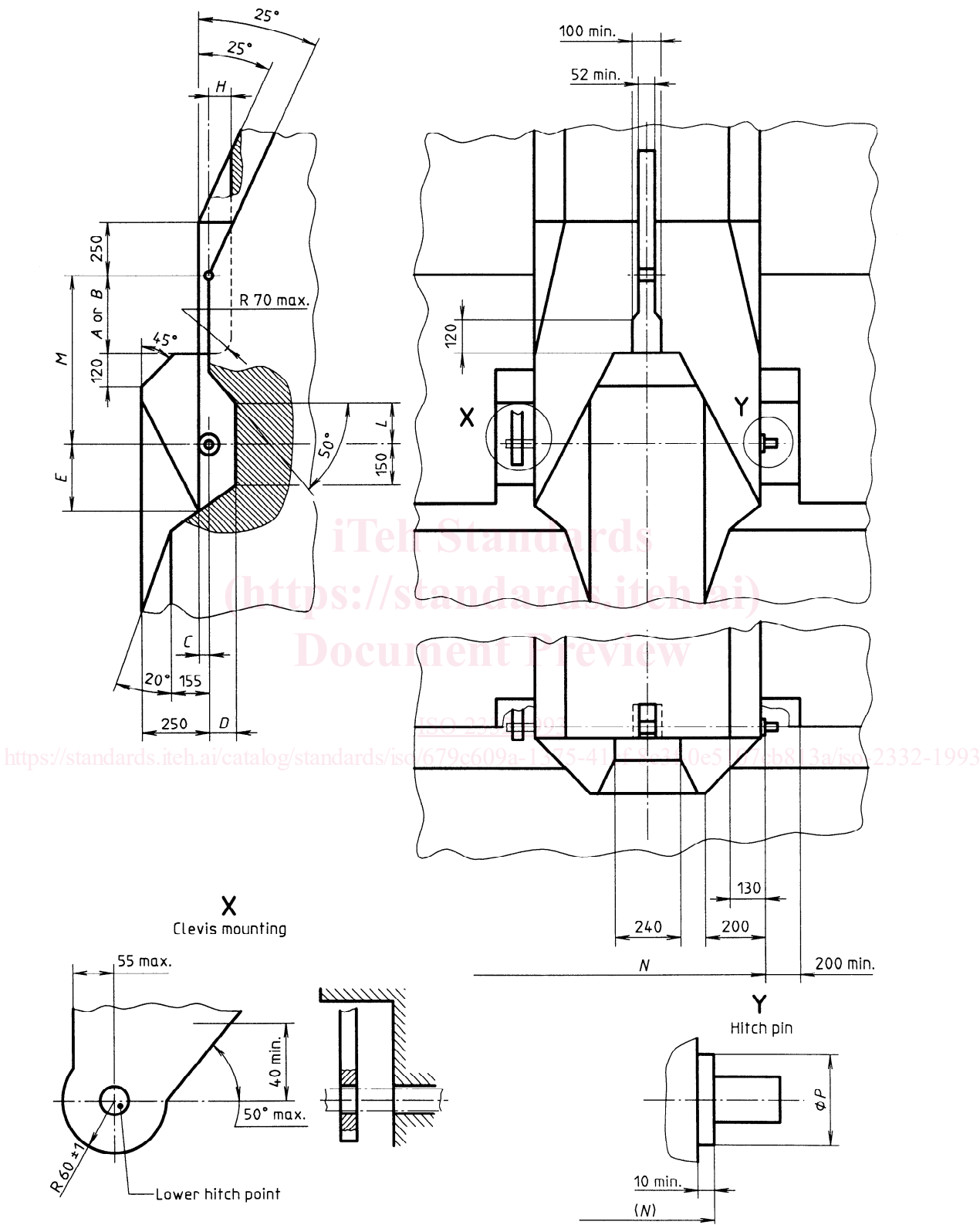


Figure 1 — Clearance zone of implements where transport pitch extends forward of vertical in raised position (view of details)

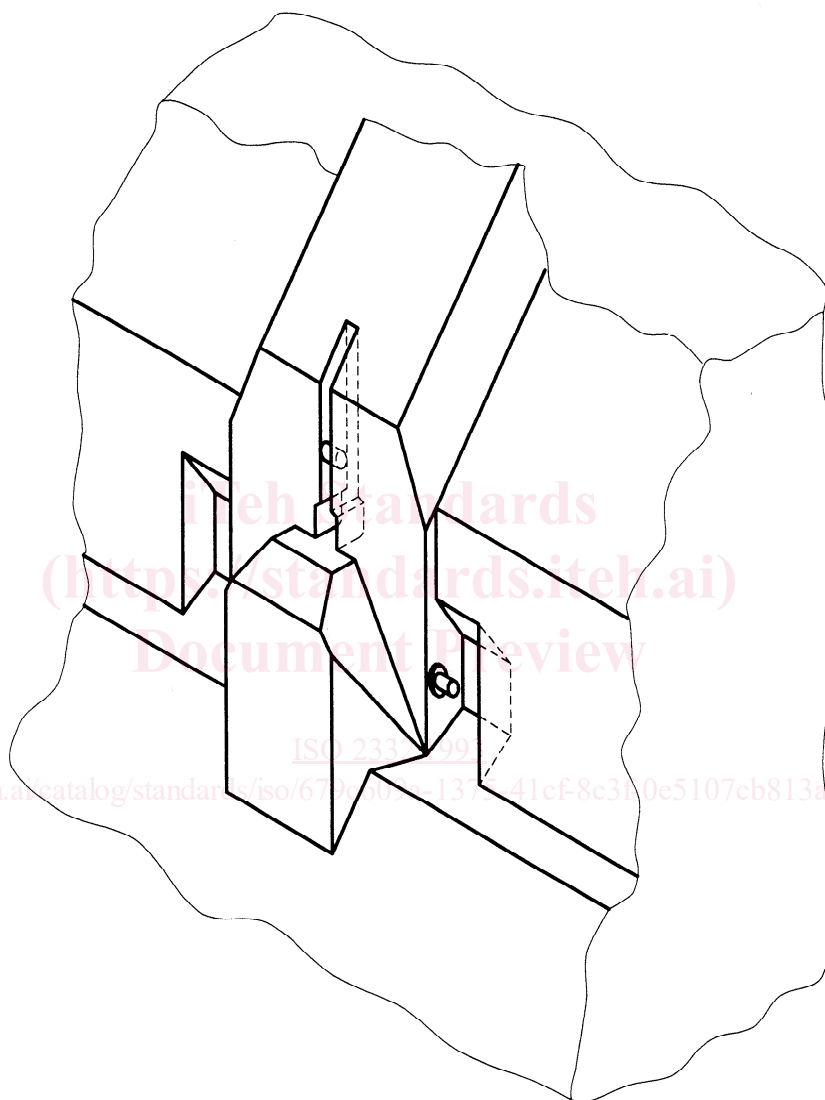


Figure 2 — Clearance zone of implements where transport pitch extends forward of vertical in raised position (perspective view)

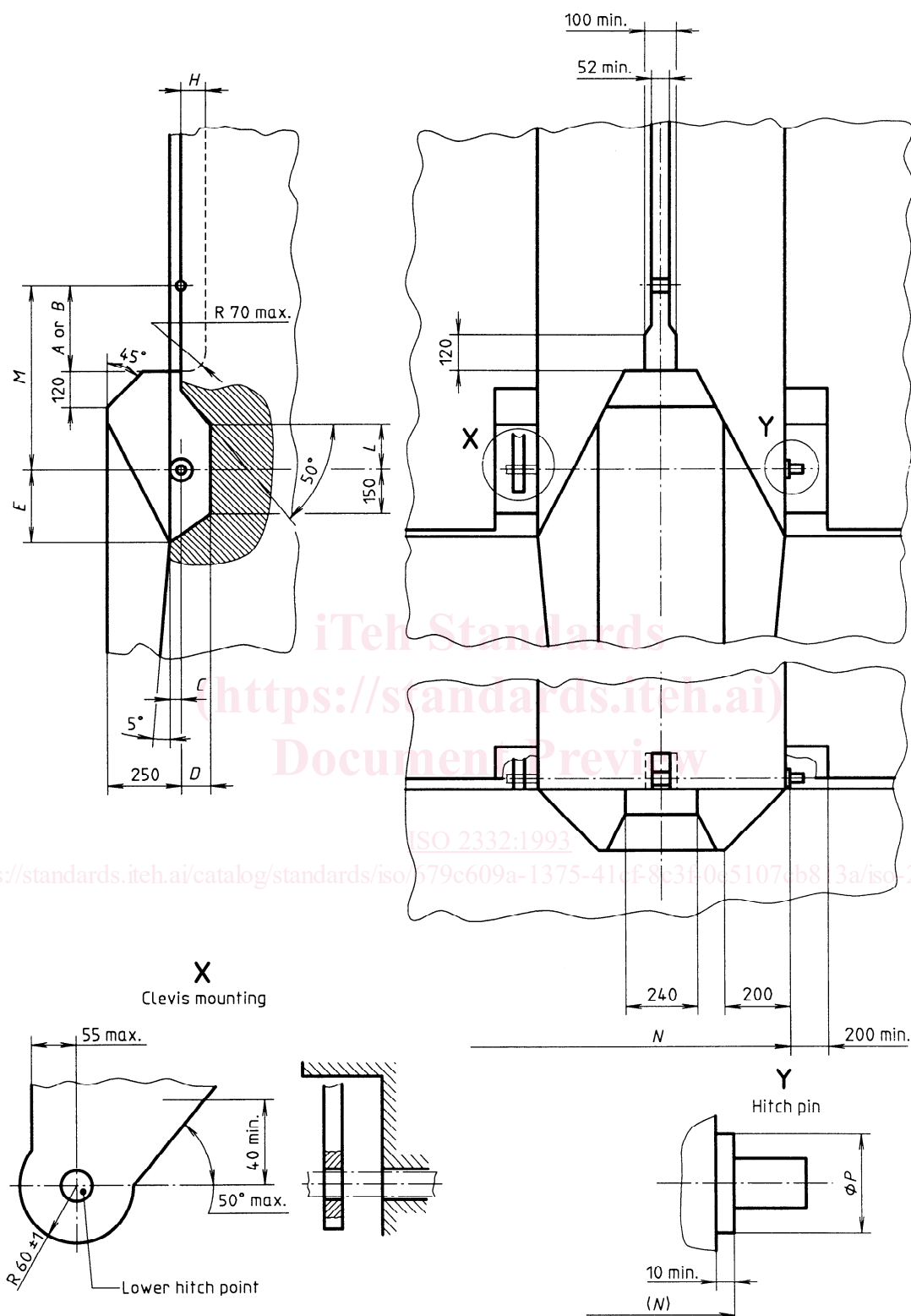


Figure 3 — Clearance zone of implements where transport pitch shall not extend forward of vertical in raised position (view of details)