



Designation: ~~C1540-09~~ Designation: C1540 – 09a

Standard Specification for Heavy Duty Shielded Couplings Joining Hubless Cast Iron Soil Pipe and Fittings¹

This standard is issued under the fixed designation C1540; the number immediately following the designation indicates the year of original adoption or, in the case of revision, the year of last revision. A number in parentheses indicates the year of last reapproval. A superscript epsilon (ϵ) indicates an editorial change since the last revision or reapproval.

1. Scope

1.1 This specification covers the evaluating of the performance of heavy duty shielded couplings to join hubless cast iron soil pipe and fittings.

1.2 Couplings covered by this standard shall have minimum dimensions as found in Table 1 and Fig. 1 of this standard.

1.3 The values stated in inch-pound units are to be regarded as standard. The values given in parentheses are mathematical conversions to SI units that are provided for information only and are not considered standard.

1.4 The committee with jurisdiction over this standard is aware of comparable standards published by other organizations, namely Cast Iron Soil Pipe Institute specification CISPI 310 and Factory Mutual Research standard FM 1680.

1.5 The following precautionary caveat pertains only to the test method portion, Section 7, of this specification. *This standard does not purport to address all of the safety concerns, if any, associated with its use. It is the responsibility of the user of this standard to establish appropriate safety and health practices and determine the applicability of regulatory limitations prior to use.*

2. Referenced Documents

2.1 ASTM Standards:²

A240/A240M [Specification for Chromium and Chromium-Nickel Stainless Steel Plate, Sheet, and Strip for Pressure Vessels and for General Applications](#)

A493 [Specification for Stainless Steel Wire and Wire Rods for Cold Heading and Cold Forging](#)

A644 [Terminology Relating to Iron Castings](#)

A888 [Specification for Hubless Cast Iron Soil Pipe and Fittings for Sanitary and Storm Drain, Waste, and Vent Piping Applications](#)

C564 [Specification for Rubber Gaskets for Cast Iron Soil Pipe and Fittings](#)

2.2 CISPI Standards:

CISPI-301 [Specification for Hubless Cast Iron Soil Pipe and Fittings for Sanitary and Storm Drain, Waste and Vent Piping Applications](#)

CISPI-310 [Specification for coupling for use in Connection with Hubless Cast Iron Soil Pipe and Fittings for Sanitary and Storm Drain, Waste and Vent Piping Applications](#)

FM 1680 [Approval Standard Couplings used in Hubless Cast Iron Systems for Drain, Waste or Vent Systems above or below ground Industrial, Commercial, and Residential](#)

3. Terminology

3.1 Definitions:

3.1.1 Definitions of the following terms used in this specification are found in Terminology A644.

3.2 Definitions of Terms Specific to This Standard:

3.2.1 *center stop, n*—an integral part of the gasket centered on the axial length of the gasket intended to limit the insertion depth of the pipe to be coupled.

3.2.2 *clamp assembly, n*—that portion of the coupling excluding the gasket.

3.2.3 *coupling, n*—the complete assembly.

3.2.4 *fitting, n*—parts of a pipeline other than straight pipes, valves, or couplings.

¹ This specification is under the jurisdiction of ASTM Committee A04 on Iron Castings and is the direct responsibility of Subcommittee A04.75 on Gaskets and Coupling for Plumbing and Sewer Piping.

Current edition approved Sept. 1, Oct. 15, 2009. Published September/December 2009. Originally approved in 2002. Last previous edition approved in 2008/2009 as C1540 – 08 ϵ . DOI: 10.1520/C1540-09a.

² For referenced ASTM standards, visit the ASTM website, www.astm.org, or contact ASTM Customer Service at service@astm.org. For *Annual Book of ASTM Standards* volume information, refer to the standard's Document Summary page on the ASTM website.

TABLE 1

Nominal Pipe Size	Coupling Width
1½ to 4 in. (38 to 100 mm)	3 in. (76 mm) Minimum Width
5 to 10 in. (127 to 254 mm)	4 in. (100 mm) Minimum Width
12 to 15 in. (305 to 381 mm)	5½ in. (140 mm) Minimum Width

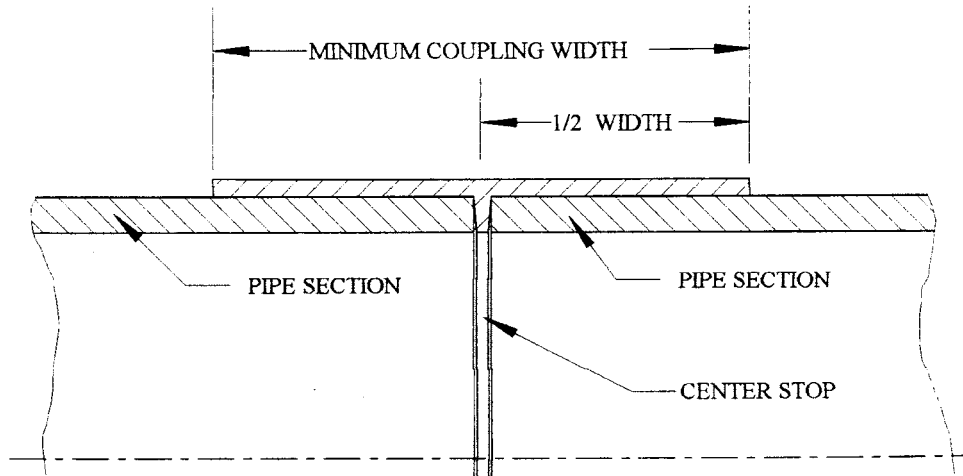


FIG. 1 Typical Center Stop Detail

3.2.5 *gasket, n*—the elastomeric portion of the coupling.

3.2.6 *heavy duty coupling, n*—a shielded coupling that has dimensions not less than those detailed in Table 1 and Fig. 1.

3.2.7 *joint, n*—the point of assembly consisting of the coupling and the joined pipes or fittings, or both.

3.2.8 *shield, n*—an external metallic protective device designed to protect the sealing gasket from external elements that could cause failure of the sealing assembly.

3.2.9 *coupling manufacturer, n*—the entity that attaches the coupling assembly to the shield of the couplings covered by this standard specification.

3.2.10 *gasket manufacturer, n*—the entity that molds the gaskets inserted into the couplings covered by this standard specification.

4. Materials and Manufacture

4.1 Physical properties of gaskets shall comply with Specification C564 using the applicable durometer hardness requirement of the column of Table 2 of that document as specified by the manufacturer.

4.2 Clamp assembly screws or bolts shall not have screwdriver slots.

4.3 All stainless steel shall meet the physical requirements of Specification A240/A240M.

5. Elastomeric Gasket Requirements

5.1 The elastomeric gasket shall consist of one piece polychloroprene construction conforming to the physical requirements of Specification C564. The gaskets shall be tested by the gasket manufacturer for compliance to Specification C564 during the course

TABLE 2 Dimensions and Tolerances for Hubless Pipe and Fittings

Size, in. (mm)	Outside Diameter, in. (mm)
1½ (38)	1.90 ± 0.06 (48.26 ± 1.52)
2 (51)	2.35 ± 0.09 (59.69 ± 2.29)
3 (76)	3.35 ± 0.09 (85.09 ± 2.29)
4 (102)	4.38+0.09-0.05 (111.25+2.29/-1.27)
5 (127)	5.30+0.09-0.05 (134.63+2.29/-1.27)
6 (152)	6.30+0.09-0.05 (160.02+2.29/-1.27)
8 (203)	8.38+0.13-0.09 (212.85+3.30/-2.29)
10 (254)	10.56 ± 0.09 (268.22 ± 2.29)
12 (305)	12.50 ± 0.09 (317.5 ± 2.29)
15 (381)	15.83 ± 0.09 (402.08 ± 2.29)

of production not to exceed 24 hours. Test shall include hardness, elongation and tensile strength, tear strength and compression set. Heat, aging, water absorption, ozone resistance and oil immersion tests shall be conducted annually or when a formulation changes, or a supplier changes, whichever occurs first.

5.1.1 The elastomeric gasket shall have an inside center stop that does not create an enlargement chamber or recess with a ledge, shoulder, or reduction of pipe area or offer an obstruction to flow.

5.1.2 The elastomeric gasket shall be free of defects that affect the use and serviceability.

6. Clamp Assembly Requirements

6.1 The clamp assembly shall be made of material conforming to the requirements as outlined in Sections 4 and 6.

6.1.1 All metallic parts shall be of 300 series stainless steel and shall conform to the requirements of Specification A240/A240M. All metallic parts made from round stock shall be of 300 series stainless steel and shall conform to the requirements of Specification A493 (excluding copper bearing alloys).

~~6.1.2 Clamp assemblies shall be tested to withstand no less than 125% of the manufacturers stated installation torque without visible signs of failure. The clamp assembly shall be tested over a steel mandrel of the appropriate diameter and torqued as required.~~

6.1.2 Clamp assemblies shall be tested to withstand no less than 125 % of the manufacturers stated installation torque without visible signs of failure. The clamp assembly shall be tested over a steel mandrel of the appropriate diameter and torqued as required. These tests shall be performed on randomly selected samples during the course of production as needed, but not less than one clamp per shift per size during clamp assembly production.

7. Couplings Requirements and Test Methods

7.1 Assemble each coupling to be tested according to the manufacturer's instructions between two sections of randomly selected hubless cast iron soil pipe meeting the requirements of CISPI 301 or Specification A888 and conduct deflection and shear tests. In addition, unrestrained hydrostatic tests shall be performed as detailed in 7.2. The deflection, shear, and unrestrained hydrostatic tests shall be performed on each size and type coupling utilizing first article approval as required not to exceed 30 days.

7.1.1 Deflection Test:

7.1.1.1 A test apparatus such as the one shown in Fig. 2 is suggested. Other testing apparatus that provide restraint to the assembly shall also be permitted. Close the outboard ends of the pipe with test plugs.

7.1.1.2 Fill the assembly with water, expel all air, and hydrostatically pressurize to 8.6 psi (59.3 kPa) for the duration of the test. One pipe shall be rigidly supported and while the assembly is under pressure, raise the opposite end of the other pipe 1 in. (25 mm) per lineal foot of pipe. Maintain the pressure for 15 min. Any leakage shall mean failure.

7.1.2 Shear Test:

7.1.2.1 Support two joined lengths of randomly selected hubless cast iron soil pipe on blocks, a minimum of 1½ in. (38.1 mm) high, at three locations. One length shall be a minimum of 24 in. (609.6 mm) in length, supported on blocks, one near the uncoupled end, and the other immediately adjacent to the couplings. Firmly restrain this length in position as shown in Fig. 3. The other coupled length shall be a minimum of 5 ft (1.52 m) in length and supported by a single block 6 in. (152.4 mm) from the end of the pipe.

7.1.2.2 Fill the assembly with water and expel all air. Apply a load of 50 lb per in. (22.7 kg) of nominal diameter at a point 6 in. (152.4 mm) from the edge of the coupling upon a 12 in. (304.8 mm) length of 3 by 3 in. (76.2 by 76.2 mm) angle iron or load distribution pad located on the top of the pipe immediately adjacent to the coupling of the pipe having one support only. Under this loading there shall be no visible leakage or displacement of more than 3⁄8 in. (9.53 mm) from true alignment adjacent to the coupling, when an internal pressure equivalent to a 20 ft (6.10 m) head of water 8.6 psi (59.3 kPa) is applied. Maintain the load and internal pressure for 15 min.

7.2 Unrestrained Hydrostatic Joint Test:

7.2.1 Assemble each coupling to be tested according to the manufacturer's instruction between two sections of machined steel pipe and conduct the unrestrained hydrostatic joint test.

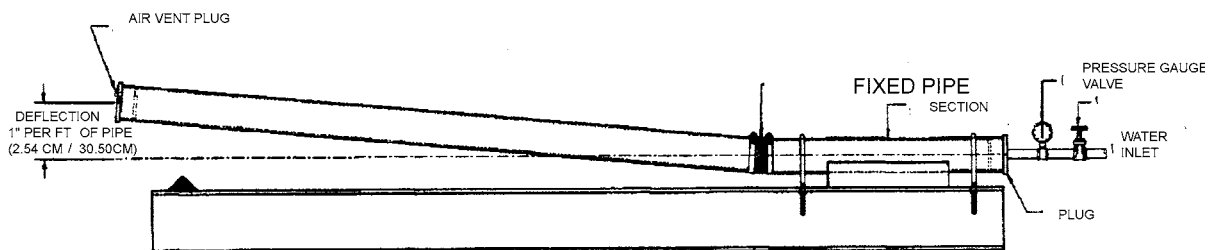


FIG. 2 Deflection Test

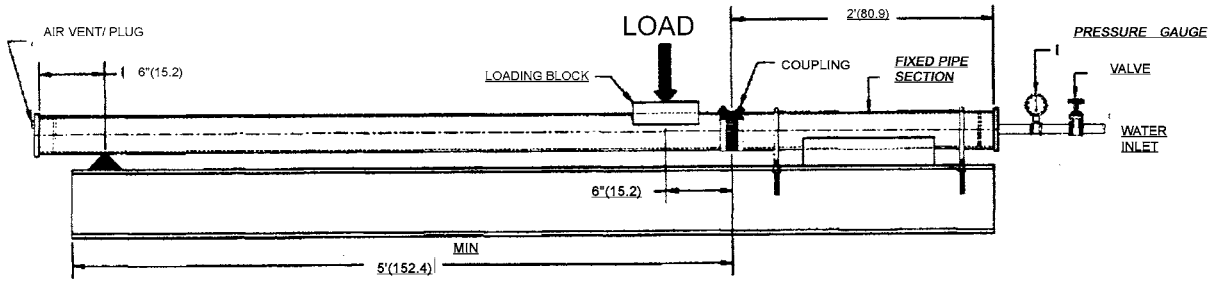
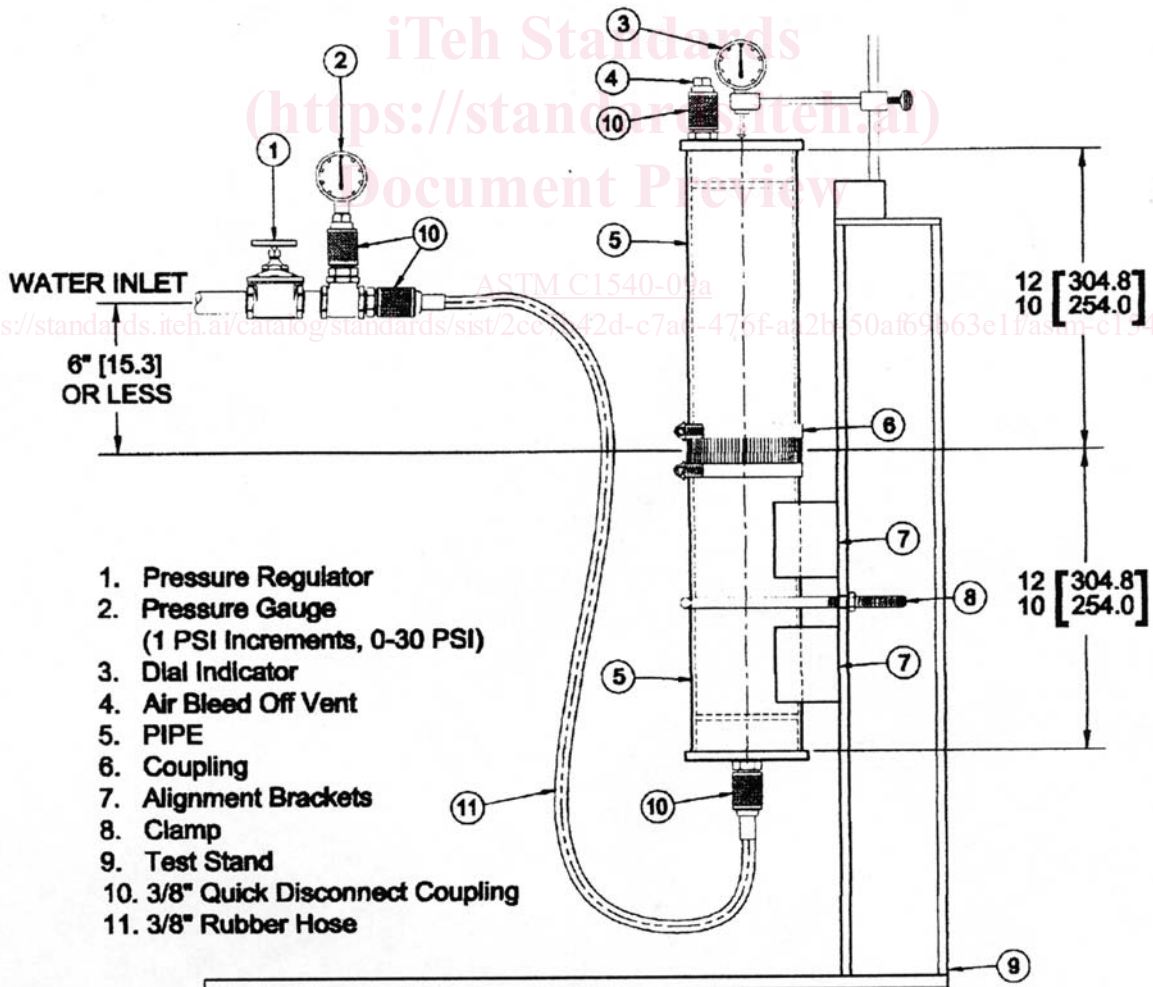


FIG. 3 Shear Test

7.2.2 The assembly shall consist of a maximum outside diameter pipe connected to a minimum outside diameter pipe with diameters as referenced in Table 2 and lengths as shown in Fig. 4. Machine the plain ends of the pipe to be used for the thrust test to the correct diameters. Plain ends shall have 0.015 in. (0.38 mm) deep grooves machined circumferentially around them at 1/8 in. (3.18 mm) intervals down the pipe section for a distance equal to that covered by the elastomeric sleeve of the coupling being tested. The tool used to machine the grooves shall have a 60° included angle and cut into the pipe from a perpendicular position. The surface between the grooves shall be a lathe turned surface of 125 RMS.

7.2.3 The plain ends of the pipe for the thrust test shall be uncoated and cleaned with acetone and thoroughly dried before each assembly.



1. Pressure Regulator
2. Pressure Gauge (1 PSI Increments, 0-30 PSI)
3. Dial Indicator
4. Air Bleed Off Vent
5. PIPE
6. Coupling
7. Alignment Brackets
8. Clamp
9. Test Stand
10. 3/8" Quick Disconnect Coupling
11. 3/8" Rubber Hose

FIG. 4 Unrestrained Hydrostatic Joint Testing Apparatus

7.2.4 Test Method:

7.2.4.1 Support the pipe assemblies in a manner that does not restrain joint movement as shown in Fig. 4.

7.2.4.2 Fill the pipe assembly (as required in 7.2) with water, expelling all air. Increase the hydrostatic pressure at a rate of 1 psi (6.9 kPa) every 30 s until the specified test pressure is reached. The specified test pressure shall be 30 psi (206.8 kPa) for 1½ in. (38.1 mm) through 5 in. (127 mm), 27 psi (186 kPa) for 6 in. (152.4 mm), 15 psi (103.4 kPa) for 8 in. (203.2 mm), 9 psi (62 kPa) for 10 in. (254 mm), and 6 psi (31.3 kPa) for 12 and 15 in. pipe. When the specified test pressure is reached, hold it for 15 min. Any leakage or axial joint movement of more than 0.150 in. (3.81 mm) shall mean failure.

8. Markings and Identification

8.1 Permanently mark each clamp assembly with the manufacturer's name or U.S. registered trademark, country of origin, all stainless and the pipe size for which it is designed. Marking shall be visible after installation.

8.2 Gasket markings shall conform to Specification C564.

8.3 The product shall also have any other markings required by law and shall have the option to include this designation (Specification C1540).

9. Certification

9.1 Upon request, the purchaser, design professional, or the administrative authority having jurisdiction where the products are being installed shall be furnished certification, by the manufacturer, stating samples representing each lot have been tested and inspected as indicated in this specification and the requirements have been met. If requested by the purchaser, design professional, or the administrative authority having jurisdiction where the products are being installed, certification shall be accompanied by test reports as prepared in accordance with Sections 4-7 of this specification. Certification shall include the legal name and address of each manufacturer.

9.2 Third Party certifiers or inspectors shall utilize the procedures detailed in Annex A1 when conducting inspections at the manufacturing locations.

iTeh Standards ANNEX

(<https://standards.iteh.ai>)
(Mandatory Information)

The following supplementary requirements shall be applied when the manufacturer or seller of the products covered by this specification utilizes third party certification agencies as part of their certifications as detailed in Section 9 of this specification.

A1. Third Party Certification or Inspection.

A1.1 Third Party certifiers or inspectors conducting regular inspections at the manufacturer's production facility shall include but not be limited to the following during each inspection.

A1.1.1 A review of the manufacturer's records to verify compliance with Sections 4-8 of this standard. Copies of the manufacturer's test reports shall be added to the third party certifier's inspection report.

A1.1.2 Random inspections of the manufacturer's finished goods inventory shall be conducted during each inspection. These inspections shall include a dimensional and marking inspection of not less than 10 of these pieces of different size couplings in inventory during each inspection. Each gasket used as part of a coupling shall be subject to the requirements of the applicable coupling standard.

APPENDIX

(Nonmandatory Information)

X1. INSTALLATION PROCEDURES FOR HUBLESS CAST IRON SOIL PIPE AND FITTINGS FOR SANITARY AND STORM DRAIN, WASTE AND VENT PIPING APPLICATIONS

X1.1 Introduction

X1.1.1 Several different types of hubless couplings are available for use in hubless cast iron sanitary and storm drain, waste, and vent piping applications to connect hubless cast iron soil pipe and fittings by using a sleeve-type, or some other type coupling device. It is the purpose of this portion of C1540 to furnish procedures as to the installation of couplings, which are manufactured in accordance with C1540 when applied to cast iron soil pipe and fittings manufactured in accordance with CISPI Standard 301 and Specification A888, latest revisions. It must be noted that these installation procedures are not intended to be applicable for couplings not made in accordance with C1540.

X1.1.2 The installation procedures stated below are illustrative only and are not a mandatory portion of C1540.

X1.2 Purposes

X1.2.1 These installation procedures provide guidelines for installation, use and inspection of hubless cast iron soil pipe and fittings for sanitary and storm drain, waste, and vent piping applications when the coupling device described in C1540 is used.

X1.2.2 All construction projects involve many variables, hence it is not possible to state in advance every installation consideration which may apply in the field. In the end the final and controlling judgment decisions concerning installation questions that arise must be made in the design and “on the job” taking into account prevailing circumstances or conditions. These procedures are not a substitute for such informed judgements and for manufacturer-provided installation instructions.

X1.2.3 Complete stability of all components of hubless cast iron soil pipe and fittings for sanitary and storm drain, waste, and vent piping applications should be given prime consideration.

X1.3 Methods of Cutting Cast Iron Soil Pipe

X1.3.1 There are several methods of successfully cutting cast iron soil pipe. These methods may be placed into two basic categories; those that require external power for their operation and those methods that require only hand operation. Methods that require external power are usually used for prefabrication work or high volume cutting operations. Examples of this type of equipment would be: (1) the abrasive saw (chop SAW), (2) power hack saw, and (3) an electrically actuated hydraulic snap cutter. Before using electrical equipment of this nature, the manufacturer’s operating instructions should be carefully reviewed for safe use of the equipment.

X1.3.2 There are two hand operated cutting tools that are used in the industry today: (1) the standard steel pipe cutter using cutting wheels specifically designed to cut cast iron soil pipe, and (2) the snap cutter. The snap cutter accounts for the majority of all cuts made on cast iron soil pipe in the field. There are several types of snap cutter available, the following procedure has been found to produce consistently good cuts:

X1.3.2.1 After marking the pipe length to be cut, position the chain cutter squarely around the pipe to ensure a straight cut. The maximum number of wheels possible should be in contact with the pipe.

X1.3.2.2 Score the pipe by applying pressure on the handles to make the cutter wheels indent the pipe.

X1.3.2.3 Rotate the pipe a few degrees and then apply quick final pressure to complete the cut. If a piece of pipe is unusually tough, score the pipe several times before making your final cut. Scoring the pipe before the actual cut is the key to a clean straight cut.

X1.3.3 Cast iron soil pipe may also be cut with a hammer and a cold chisel. This method of cutting is very time consuming and should only be used if snap cutters are not available. Again, protective equipment, such as safety goggles, should be used. The procedure for cutting soil pipe with a hammer and chisel are as follows:

X1.3.3.1 Measure the length to be cut and mark the cut line completely around the circumference of the pipe.

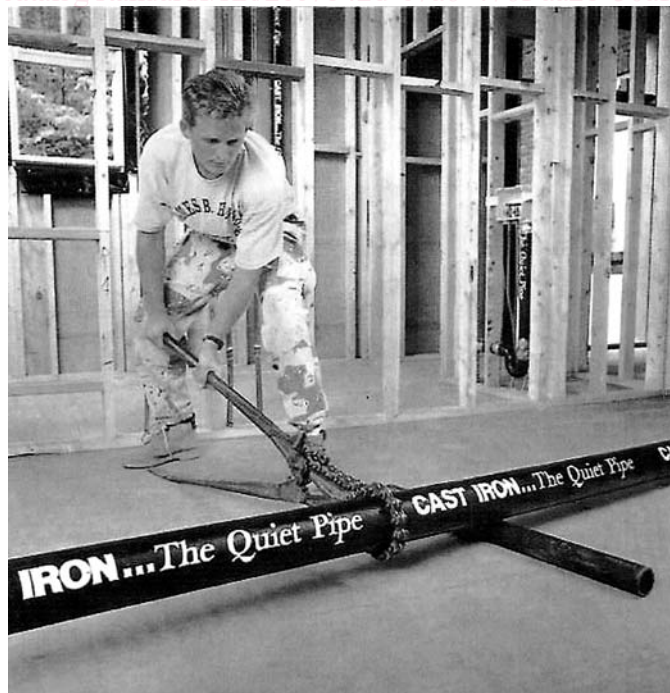


FIG. X1.1 Snap Cutter