

ETSI TS 129 521 V17.10.0 (2024-09)



**5G;
5G System;
Binding Support Management Service;
Stage 3
(3GPP TS 29.521 version 17.10.0 Release 17)**

[ETSI TS 129 521 V17.10.0 \(2024-09\)](https://standards.iteh.ai/catalog/standards/etsi/0d2c2eb8-0ad2-416e-9ea0-0d6300c0b26b/etsi-ts-129-521-v17-10-0-2024-09)

<https://standards.iteh.ai/catalog/standards/etsi/0d2c2eb8-0ad2-416e-9ea0-0d6300c0b26b/etsi-ts-129-521-v17-10-0-2024-09>



Reference

RTS/TSGC-0329521vha0

Keywords

5G

ETSI

650 Route des Lucioles
F-06921 Sophia Antipolis Cedex - FRANCE

Tel.: +33 4 92 94 42 00 Fax: +33 4 93 65 47 16

Siret N° 348 623 562 00017 - APE 7112B
Association à but non lucratif enregistrée à la
Sous-Préfecture de Grasse (06) N° w061004871

Important notice

The present document can be downloaded from:

<https://www.etsi.org/standards-search>

The present document may be made available in electronic versions and/or in print. The content of any electronic and/or print versions of the present document shall not be modified without the prior written authorization of ETSI. In case of any existing or perceived difference in contents between such versions and/or in print, the prevailing version of an ETSI deliverable is the one made publicly available in PDF format at www.etsi.org/deliver.

Users of the present document should be aware that the document may be subject to revision or change of status.

Information on the current status of this and other ETSI documents is available at

<https://portal.etsi.org/TB/ETSIDeliverableStatus.aspx>

If you find errors in the present document, please send your comment to one of the following services:

<https://portal.etsi.org/People/CommitteeSupportStaff.aspx>

If you find a security vulnerability in the present document, please report it through our

Coordinated Vulnerability Disclosure Program:

<https://www.etsi.org/standards/coordinated-vulnerability-disclosure>

Notice of disclaimer & limitation of liability

The information provided in the present deliverable is directed solely to professionals who have the appropriate degree of experience to understand and interpret its content in accordance with generally accepted engineering or other professional standard and applicable regulations.

No recommendation as to products and services or vendors is made or should be implied.

No representation or warranty is made that this deliverable is technically accurate or sufficient or conforms to any law and/or governmental rule and/or regulation and further, no representation or warranty is made of merchantability or fitness for any particular purpose or against infringement of intellectual property rights.

In no event shall ETSI be held liable for loss of profits or any other incidental or consequential damages.

Any software contained in this deliverable is provided "AS IS" with no warranties, express or implied, including but not limited to, the warranties of merchantability, fitness for a particular purpose and non-infringement of intellectual property rights and ETSI shall not be held liable in any event for any damages whatsoever (including, without limitation, damages for loss of profits, business interruption, loss of information, or any other pecuniary loss) arising out of or related to the use of or inability to use the software.

Copyright Notification

No part may be reproduced or utilized in any form or by any means, electronic or mechanical, including photocopying and microfilm except as authorized by written permission of ETSI.

The content of the PDF version shall not be modified without the written authorization of ETSI.

The copyright and the foregoing restriction extend to reproduction in all media.

© ETSI 2024.
All rights reserved.

Intellectual Property Rights

Essential patents

IPRs essential or potentially essential to normative deliverables may have been declared to ETSI. The declarations pertaining to these essential IPRs, if any, are publicly available for **ETSI members and non-members**, and can be found in ETSI SR 000 314: "*Intellectual Property Rights (IPRs); Essential, or potentially Essential, IPRs notified to ETSI in respect of ETSI standards*", which is available from the ETSI Secretariat. Latest updates are available on the ETSI Web server (<https://ipr.etsi.org/>).

Pursuant to the ETSI Directives including the ETSI IPR Policy, no investigation regarding the essentiality of IPRs, including IPR searches, has been carried out by ETSI. No guarantee can be given as to the existence of other IPRs not referenced in ETSI SR 000 314 (or the updates on the ETSI Web server) which are, or may be, or may become, essential to the present document.

Trademarks

The present document may include trademarks and/or tradenames which are asserted and/or registered by their owners. ETSI claims no ownership of these except for any which are indicated as being the property of ETSI, and conveys no right to use or reproduce any trademark and/or tradename. Mention of those trademarks in the present document does not constitute an endorsement by ETSI of products, services or organizations associated with those trademarks.

DECT™, **PLUGTESTS™**, **UMTS™** and the ETSI logo are trademarks of ETSI registered for the benefit of its Members. **3GPP™** and **LTE™** are trademarks of ETSI registered for the benefit of its Members and of the 3GPP Organizational Partners. **oneM2M™** logo is a trademark of ETSI registered for the benefit of its Members and of the oneM2M Partners. **GSM®** and the GSM logo are trademarks registered and owned by the GSM Association.

Legal Notice

This Technical Specification (TS) has been produced by ETSI 3rd Generation Partnership Project (3GPP).

The present document may refer to technical specifications or reports using their 3GPP identities. These shall be interpreted as being references to the corresponding ETSI deliverables. (2024-09)

The cross reference between 3GPP and ETSI identities can be found under <https://webapp.etsi.org/key/queryform.asp>.

Modal verbs terminology

In the present document "**shall**", "**shall not**", "**should**", "**should not**", "**may**", "**need not**", "**will**", "**will not**", "**can**" and "**cannot**" are to be interpreted as described in clause 3.2 of the [ETSI Drafting Rules](#) (Verbal forms for the expression of provisions).

"**must**" and "**must not**" are **NOT** allowed in ETSI deliverables except when used in direct citation.

Contents

Intellectual Property Rights	2
Legal Notice	2
Modal verbs terminology.....	2
Foreword.....	6
1 Scope	7
2 References	7
3 Definitions and abbreviations.....	8
3.1 Definitions	8
3.2 Abbreviations	8
4 Binding Support Management Service.....	8
4.1 Service Description	8
4.1.1 Overview	8
4.1.2 Service Architecture	9
4.1.3 Network Functions.....	10
4.1.3.1 Binding Support Function (BSF)	10
4.1.3.2 NF Service Consumers.....	10
4.2 Service Operations	12
4.2.1 Introduction.....	12
4.2.2 Nbsf_Management_Register Service Operation.....	12
4.2.2.1 General	12
4.2.2.2 Register a new PCF for a PDU Session binding information.....	13
4.2.2.3 Register a new PCF for a UE binding information	15
4.2.2.4 Register a new PCF for an MBS Session binding information	16
4.2.3 Nbsf_Management_Deregister Service Operation	17
4.2.3.1 General	17
4.2.3.2 Deregister an individual PCF for a PDU Session binding information.....	18
4.2.3.3 Deregister an individual PCF for a UE binding information.....	18
4.2.3.4 Deregister an individual PCF for an MBS Session binding information	19
4.2.4 Nbsf_Management_Discovery Service Operation.....	19
4.2.4.1 General	19
4.2.4.2 Retrieve the PCF binding information for a PDU session.....	20
4.2.4.3 Retrieve the PCF binding information for a UE.....	21
4.2.4.4 Retrieve the PCF binding information for an MBS Session	21
4.2.5 Nbsf_Management_Update Service Operation.....	22
4.2.5.1 General	22
4.2.5.2 Update an existing PCF for a PDU Session binding information	23
4.2.5.3 Update an existing PCF for a UE binding information	24
4.2.5.4 Update an existing PCF for an MBS Session binding information.....	25
4.2.6 Nbsf_Management_Subscribe Service Operation	25
4.2.6.1 General	25
4.2.6.2 Creating a new subscription	26
4.2.6.3 Modifying an existing subscription.....	27
4.2.7 Nbsf_Management_Unsubscribe Service Operation	28
4.2.7.1 General	28
4.2.7.2 Unsubscription from event notifications	28
4.2.8 Nbsf_Management_Notify Service Operation.....	29
4.2.8.1 General	29
4.2.8.2 Notification about subscribed events	29
5 Nbsf_Management Service API.....	30
5.1 Introduction	30
5.2 Usage of HTTP.....	31
5.2.1 General.....	31
5.2.2 HTTP standard headers.....	31

- 5.2.2.1 General 31
- 5.2.2.2 Content type 31
- 5.2.3 HTTP custom headers 31
- 5.2.3.1 General 31
- 5.3 Resources 31
- 5.3.1 Resource Structure 31
- 5.3.2 Resource: PCF for a PDU Session Bindings 33
 - 5.3.2.1 Description 33
 - 5.3.2.2 Resource definition 33
 - 5.3.2.3 Resource Standard Methods 34
 - 5.3.2.3.1 POST 34
 - 5.3.2.3.2 GET 34
- 5.3.3 Resource: Individual PCF for a PDU Session Binding 35
 - 5.3.3.1 Description 35
 - 5.3.3.2 Resource definition 35
 - 5.3.3.3 Resource Standard Methods 36
 - 5.3.3.3.1 DELETE 36
 - 5.3.3.3.2 PATCH 37
- 5.3.4 Resource: Binding Subscriptions 38
 - 5.3.4.1 Description 38
 - 5.3.4.2 Resource definition 38
 - 5.3.4.3 Resource Standard Methods 38
 - 5.3.4.3.1 POST 38
 - 5.3.4.4 Resource Custom Operations 39
- 5.3.5 Resource: Individual Binding Subscription 39
 - 5.3.5.1 Description 39
 - 5.3.5.2 Resource definition 39
 - 5.3.5.3 Resource Standard Methods 39
 - 5.3.5.3.1 PUT 39
 - 5.3.5.3.2 DELETE 40
 - 5.3.5.4 Resource Custom Operations 41
- 5.3.6 Void 41
- 5.3.7 Resource: PCF for a UE Bindings 41
 - 5.3.7.1 Description 41
 - 5.3.7.2 Resource definition 41
 - 5.3.7.3 Resource Standard Methods 42
 - 5.3.7.3.1 POST 42
 - 5.3.7.3.2 GET 42
- 5.3.8 Resource: Individual PCF for a UE Binding 43
 - 5.3.8.1 Description 43
 - 5.3.8.2 Resource definition 43
 - 5.3.8.3 Resource Standard Methods 43
 - 5.3.8.3.1 DELETE 43
 - 5.3.8.3.2 PATCH 44
- 5.3.9 Resource: PCF for an MBS Session Bindings 45
 - 5.3.9.1 Description 45
 - 5.3.9.2 Resource definition 45
 - 5.3.9.3 Resource Standard Methods 45
 - 5.3.9.3.1 POST 45
 - 5.3.9.3.2 GET 46
 - 5.3.9.4 Resource Custom Operations 47
- 5.3.10 Resource: Individual PCF for an MBS Session Binding 47
 - 5.3.10.1 Description 47
 - 5.3.10.2 Resource definition 47
 - 5.3.10.3 Resource Standard Methods 47
 - 5.3.10.3.1 PATCH 47
 - 5.3.10.3.2 DELETE 48
 - 5.3.10.4 Resource Custom Operations 49
- 5.4 Custom Operations without associated resources 49
- 5.5 Notifications 49
 - 5.5.1 General 49
 - 5.5.2 BSF Notification 50

5.5.2.1	Description	50
5.5.2.2	Target URI	50
5.5.2.3	Standard Methods	50
5.5.2.3.1	POST	50
5.6	Data Model	51
5.6.1	General	51
5.6.2	Structured data types	53
5.6.2.1	Introduction	53
5.6.2.2	Type PcfBinding	54
5.6.2.3	Type PcfBindingPatch	56
5.6.2.4	Type ParameterCombination	57
5.6.2.5	Type ExtProblemDetails	57
5.6.2.6	Type BindingResp	57
5.6.2.7	Type BsfSubscription	58
5.6.2.8	Type BsfNotification	58
5.6.2.9	Type BsfEventNotification	59
5.6.2.10	Type PcfForUeBinding	59
5.6.2.11	Type PcfForUeBindingPatch	60
5.6.2.12	Type SnssaiDnnPair	60
5.6.2.13	Type PcfForUeInfo	60
5.6.2.14	Type PcfForPduSessionInfo	61
5.6.2.15	Type PcfMbsBinding	62
5.6.2.16	Type PcfMbsBindingPatch	63
5.6.2.17	Type MbsExtProblemDetails	63
5.6.2.18	Type MbsBindingResp	63
5.6.3	Simple data types and enumerations	63
5.6.3.1	Introduction	63
5.6.3.2	Simple data types	63
5.6.3.3	Enumeration: BindingLevel	64
5.6.3.4	Void	64
5.6.3.5	Enumeration: BsfEvent	64
5.6.4	Data types describing alternative data types or combinations of data types	64
5.6.4.1	Type: BsfSubscriptionResp	64
5.7	Error handling	64
5.7.1	General	64
5.7.2	Protocol Errors	65
5.7.3	Application Errors	65
5.8	Feature negotiation	65
5.9	Security	66
Annex A (normative):	OpenAPI specification	67
A.1	General	67
A.2	Nbsf_Management API	67
Annex B (informative):	Deployment option to support BSF and DRA coexistence due to network migration	85
Annex C (informative):	Change history	86
History		90

Foreword

This Technical Specification has been produced by the 3rd Generation Partnership Project (3GPP).

The contents of the present document are subject to continuing work within the TSG and may change following formal TSG approval. Should the TSG modify the contents of the present document, it will be re-released by the TSG with an identifying change of release date and an increase in version number as follows:

Version x.y.z

where:

- x the first digit:
 - 1 presented to TSG for information;
 - 2 presented to TSG for approval;
 - 3 or greater indicates TSG approved document under change control.
- y the second digit is incremented for all changes of substance, i.e. technical enhancements, corrections, updates, etc.
- z the third digit is incremented when editorial only changes have been incorporated in the document.

iTeh Standards
(<https://standards.iteh.ai>)
Document Preview

[ETSI TS 129 521 V17.10.0 \(2024-09\)](https://standards.iteh.ai/catalog/standards/etsi/0d2c2eb8-0ad2-416e-9ea0-0d6300c0b26b/etsi-ts-129-521-v17-10-0-2024-09)

<https://standards.iteh.ai/catalog/standards/etsi/0d2c2eb8-0ad2-416e-9ea0-0d6300c0b26b/etsi-ts-129-521-v17-10-0-2024-09>

1 Scope

The present specification provides the stage 3 definition of the Binding Support Management Service of the 5G System.

The 5G System Architecture is defined in 3GPP TS 23.501 [2]. The stage 2 definition and related procedures for Binding Support Management Service is specified in 3GPP TS 23.502 [3] and 3GPP TS 23.503 [4].

The 5G System stage 3 call flows are provided in 3GPP TS 29.513 [5].

The Technical Realization of the Service Based Architecture and the Principles and Guidelines for Services Definition are specified in 3GPP TS 29.500 [6] and 3GPP TS 29.501 [7].

The Binding Support Management Service is provided by the Binding Support Function (BSF).

2 References

The following documents contain provisions which, through reference in this text, constitute provisions of the present document.

- References are either specific (identified by date of publication, edition number, version number, etc.) or non-specific.
- For a specific reference, subsequent revisions do not apply.
- For a non-specific reference, the latest version applies. In the case of a reference to a 3GPP document (including a GSM document), a non-specific reference implicitly refers to the latest version of that document *in the same Release as the present document*.

- [1] 3GPP TR 21.905: "Vocabulary for 3GPP Specifications".
- [2] 3GPP TS 23.501: "System Architecture for the 5G System; Stage 2".
- [3] 3GPP TS 23.502: "Procedures for the 5G System; Stage 2".
- [4] 3GPP TS 23.503: "Policy and Charging Control Framework for the 5G System; Stage 2".
- [5] 3GPP TS 29.513: "5G System; Policy and Charging Control signalling flows and QoS parameter mapping; Stage 3".
- [6] 3GPP TS 29.500: "5G System; Technical Realization of Service Based Architecture; Stage 3".
- [7] 3GPP TS 29.501: "5G System; Principles and Guidelines for Services Definition; Stage 3".
- [8] IETF RFC 7540: "Hypertext Transfer Protocol Version 2 (HTTP/2)".
- [9] IETF RFC 8259: "The JavaScript Object Notation (JSON) Data Interchange Format".
- [10] 3GPP TS 29.571: "5G System; Common Data Types for Service Based Interfaces Stage 3".
- [11] OpenAPI: "OpenAPI Specification Version 3.0.0", <https://spec.openapis.org/oas/v3.0.0>.
- [12] 3GPP TS 29.510: "5G System; Network Function Repository Services; Stage 3".
- [13] IETF RFC 7807: "Problem Details for HTTP APIs".
- [14] 3GPP TS 29.213: "Policy and Charging Control signalling flows and Quality of Service (QoS) parameter mapping".
- [15] 3GPP TS 33.501: "Security architecture and procedures for 5G system".
- [16] IETF RFC 6749: "The OAuth 2.0 Authorization Framework".
- [17] 3GPP TS 23.527: "5G System; Restoration Procedures".

- [18] 3GPP TR 21.900: "Technical Specification Group working methods".
- [19] 3GPP TS 23.316: "Wireless and wireline convergence access support for the 5G System (5GS)".
- [20] IETF RFC 7396: "JSON Merge Patch".
- [21] 3GPP TS 29.512: "5G System; Session Management Policy Control Service; Stage 3".

3 Definitions and abbreviations

3.1 Definitions

For the purposes of the present document, the terms and definitions given in 3GPP TR 21.905 [1] and the following apply. A term defined in the present document takes precedence over the definition of the same term, if any, in 3GPP TR 21.905 [1].

3.2 Abbreviations

For the purposes of the present document, the abbreviations given in 3GPP TR 21.905 [1] and the following apply. An abbreviation defined in the present document takes precedence over the definition of the same abbreviation, if any, in 3GPP TR 21.905 [1].

5G DDNMF	5G Direct Discovery Name Management Function
5G-RG	5G Residential Gateway
AF	Application Function
AM	Access and Mobility Management
BSF	Binding Support Function
DNN	Data Network Name
DRA	Diameter Routing Agent
HTTP	Hypertext Transfer Protocol
FN-RG	Fixed Network Residential Gateway
FQDN	Fully Qualified Domain Name
GPSI	Generic Public Subscription Identifier
JSON	JavaScript Object Notation HTTP Hypertext Transfer Protocol
MAC	Media Access Control
MBSF	Multicast/Broadcast Service Function
NEF	Network Exposure Function
NRF	Network Repository Function
NWDAF	Network Data Analytics Function
PCF	Policy Control Function
SMF	Session Management Function
S-NSSAI	Single Network Slice Selection Assistance Information
SUPI	Subscription Permanent Identifier
TSCTSF	Time Sensitive Communication and Time Synchronization Function
UDR	Unified Data Repository

4 Binding Support Management Service

4.1 Service Description

4.1.1 Overview

The Binding Support Management Service as defined in 3GPP TS 23.502 [3] and 3GPP TS 23.503 [4], is provided by the Binding Support Function (BSF).

The Nbsf_Management service is used to provide:

- a PCF for a PDU session binding functionality, which ensures that an AF request for a certain PDU Session reaches the relevant PCF holding that PDU Session information, or ensures that the same PCF is selected for multiple PDU sessions.
- a PCF for an MBS session binding functionality, which ensures that for location dependent MBS services, an AF request for a certain MBS Session reaches the relevant PCF holding that MBS Session information.
- a PCF for a UE binding functionality, which ensures that an AF request for Access and Mobility related Policy Authorization for a UE reaches the relevant PCF for a UE holding the AM Policy Association.
- Subscription to notification events about a newly registered or deregistered PCF for a UE or PCF for a PDU session.

This service:

- allows NF service consumers to register, update and remove binding information;
- allows NF service consumers to retrieve binding information;
- allows NF service consumers to subscribe to notifications of registration/deregistration events of newly registered or deregistered PCF for a UE or PCF for a PDU session.

4.1.2 Service Architecture

The 5G System Architecture is defined in 3GPP TS 23.501 [2]. The Policy and Charging related 5G architecture is also described in 3GPP TS 23.503 [4] and 3GPP TS 29.513 [5].

The Binding Support Management Service (Nbsf_Management) is exhibited by the Binding Support Function (BSF).

The known consumers of the Nbsf_Management service are:

- Policy Control Function (PCF)
- Network Exposure Function (NEF)
- Application Function (AF);
- Multicast/Broadcast Service Function (MBSF);
- 5G Direct Discovery Name Management Function (5G DDNMF);
- Network Data Analytics Function (NWDAF); and
- Time Sensitivity Communication and Time Synchronization Function (TSCTSF).

As described in 3GPP TS 23.503 [4], the BSF is a function that can be deployed standalone or as a functionality provided by other network functions, such as PCF, UDR, NRF, SMF.

NOTE 1: The PCF accesses the Nbsf_Management service at the BSF via an internal interface when it is collocated with BSF.

NOTE 2: The DRA decides to select a BSF based on user IP address range when the DRA has no binding information for the subscriber to get the relevant PCF for a PDU session address. DRA and BSF coexistence is described in 3GPP TS 29.513 [5], Annex A.

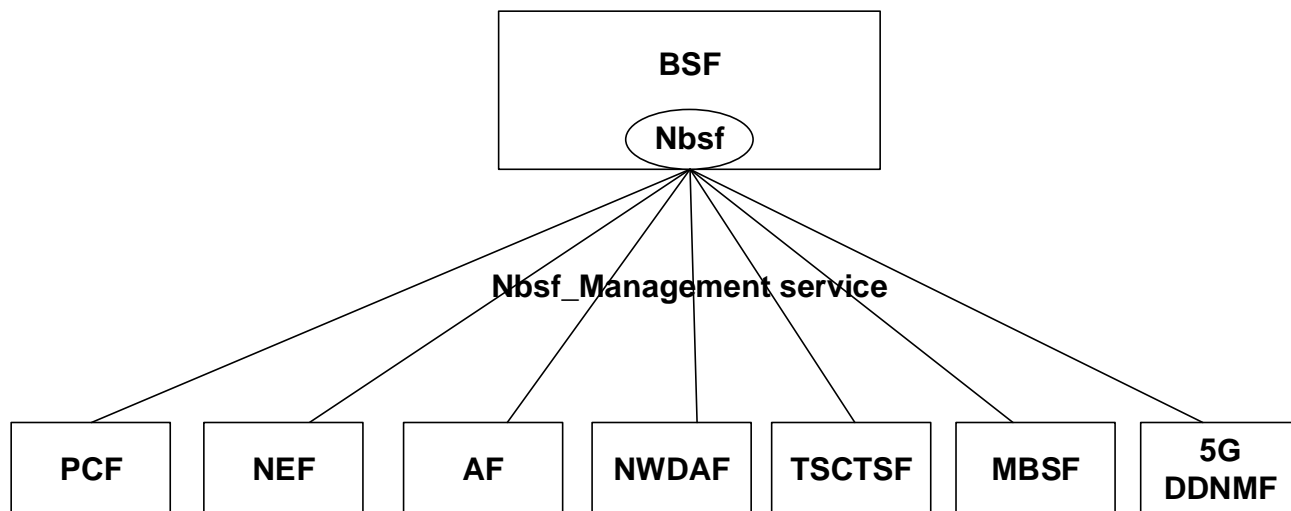


Figure 4.1.2-1: Reference Architecture for the Nbsf_Management service; SBI representation

NOTE 3: The PCF in the figure represents both, the PCF for a UE and the PCF for a PDU session. The PCF for a UE and the PCF for a PDU session separately and independently register themselves at the BSF, regardless they are deployed in the same NF instance or separately in different NF instances.

4.1.3 Network Functions

4.1.3.1 Binding Support Function (BSF)

The BSF:

- stores the binding information for a certain PDU Session;
- stores the binding information for a certain MBS Session;
- stores the binding information for a certain UE;
- enables the subscription to notifications of PCF for a PDU session registration/deregistration events;
- enables the subscription to notifications of PCF for a UE registration/deregistration events;and
- enables the discovery of binding information (e.g. the address information of the selected PCF for a PDU session).

The BSF allows NF service consumers (e.g. PCF) to register, update and remove a binding information, and allows NF service consumers (e.g. AF, NEF, NWDAF) to discover a binding information (e.g. the address information of the selected PCF). The BSF also allows NF service consumers (e.g. PCF for a UE, AF, NEF) to subscribe to notifications of PCF registration/deregistration events.

The BSF can be deployed standalone or collocated with other network functions, such as PCF, UDR, NRF and SMF.

4.1.3.2 NF Service Consumers

The Policy Control Function (PCF):

- The PCF for a PDU session:
 - a. registers binding information in the BSF for a UE when an IPv4 address and/or IPv6 prefix is allocated, or a MAC address is used for the PDU session;
 - b. updates binding information in the BSF when a UE address information is changed for the PDU Session; and

- c. removes binding information in the BSF when an IPv4 address and/or IPv6 prefix is released, or a MAC address is not used for the PDU Session.
- The PCF for an MBS session:
 - a. registers binding information in the BSF for an MBS session;
 - b. updates binding information in the BSF for the MBS session;
 - c. removes binding information in the BSF for the MBS session.
- The PCF for a UE:
 - a. registers binding information in the BSF for a UE when an AM/UE Policy Association is established;
 - b. removes binding information in the BSF when the AM/UE Policy Association is terminated; and
 - c. subscribes with the BSF to notification of registration/deregistration events of the PCF for a PDU session.

The Network Exposure Function (NEF):

- provides means for the Application Functions to securely interact with the Policy framework for policy control to 3GPP network. During the procedure, it needs to discover the selected PCF for a PDU session, the selected PCF for an MBS Session (if applicable) or the selected PCF for a UE by using the Nbsf_Management_Discovery service operation and the selected PCF for a UE by using the Nbsf_Management_Subscribe/Notify service operations.

The Application Function (AF):

- discovers the selected PCF for a PDU session, the selected PCF for an MBS Session (if applicable) or the selected PCF for a UE by using the Nbsf_Management_Discovery service operation and the selected PCF for a UE by using the Nbsf_Management_Subscribe/Notify service operations when it is allowed to interact directly with the policy framework for policy control.

The Network Data Analytics Function (NWDAF):

- discovers the selected PCF for a PDU session by using the Nbsf_Management_Discovery service operation.

The Time Sensitive Communication and Time Synchronization Function (TSCTSF)

- discovers the selected PCF for a PDU session by using the Nbsf_Management_Discovery service operation and the selected PCF for a UE by using Nbsf_Management_Subscribe/Notify service operations when it is allowed to interact with the policy framework for time sensitive communication and time synchronization control.

The Multicast/Broadcast Service Function (MBSF):

- discovers the selected PCF for an MBS session by using the Nbsf_Management_Discovery service operation.

The 5G Direct Discovery Name Management Function (5G DDNMF):

- handles the discovery of the selected PCF for a UE by using the Nbsf_Management_(un)Subscribe/Notify service operations.

4.2 Service Operations

4.2.1 Introduction

Table 4.2.1-1: Operations of the Nbsf_Management Service

Service operation name	Description	Initiated by
Nbsf_Management_Register	This service operation is used to register the binding information for a PDU session or an MBS session or a UE.	NF service consumer (e.g., PCF)
Nbsf_Management_Deregister	This service operation is used to deregister the binding information for a PDU session or an MBS session or a UE.	NF service consumer (PCF)
Nbsf_Management_Discovery	This service operation is used by an NF service consumer to discover a selected PCF for a PDU session or a selected PCF for an MBS session or a selected PCF for a UE.	NF service consumer (e.g., NEF, AF, NWDAF, MBSF)
Nbsf_Management_Update	This service operation is used to update an existing binding information for a PDU session or an MBS session or a UE.	NF service consumer (e.g., PCF)
Nbsf_Management_Subscribe	This service operation is used by an NF service consumer to subscribe or to modify a subscription for event notifications of PCF for the UE or PCF for the PDU session binding related events.	NF service consumer (e.g., NEF, AF, PCF, 5G DDNMF)
Nbsf_Management_Unsubscribe	This service operation is used by an NF service consumer to terminate a previous subscription.	NF service consumer (e.g., NEF, AF, PCF, 5G DDNMF)
Nbsf_Management_Notify	This service operation is used by the BSF to notify binding related event(s) to the NF service consumer which has subscribed to such event(s).	BSF

4.2.2 Nbsf_Management_Register Service Operation

4.2.2.1 General

This service operation allows a NF service consumer (e.g. PCF for a PDU session) to register the session binding information for a UE in the BSF by providing the user identity, the DNN, the UE address(es) and the selected PCF address for a certain PDU Session to the BSF, and BSF stores the information.

If the BindingUpdate feature is not supported and the NF service consumer (e.g. PCF for a PDU session) receives a new UE address (e.g. IPv6 prefix) and has already registered session binding information for this PDU session, the NF service consumer (e.g. PCF for a PDU session) shall register a new session binding information in the BSF.

If the SamePcf feature or the ExtendedSamePcf feature is supported, this service operation allows the NF service consumer (e.g. PCF for a PDU session) to check whether PCF addressing information for Npcf_SMPolicyControl service is already registered in the BSF by another PCF for a combination of the UE ID, DNN and S-NSSAI parameters of the PDU session.

This service operation also allows a NF service consumer (e.g. PCF for a UE) to register PCF for a UE binding information for a UE in the BSF, by providing to the BSF the user identity and the selected PCF address for a certain UE, and the BSF stores the information.

In addition, this service operation also allows a NF service consumer (e.g. PCF for an MBS session) to register the session binding information for an MBS Session at the BSF, by providing the MBS Session ID, the identifier of the selected PCF for the MBS Session and the related information (e.g. PCF (service) set information), and the BSF stores the information.

The following procedures using the Nbsf_Management_Registration service operation are supported:

- Register a new PCF for a PDU Session binding information.
- Register a new PCF for a UE binding information.

- Register a new PCF for an MBS Session binding information.

4.2.2.2 Register a new PCF for a PDU Session binding information

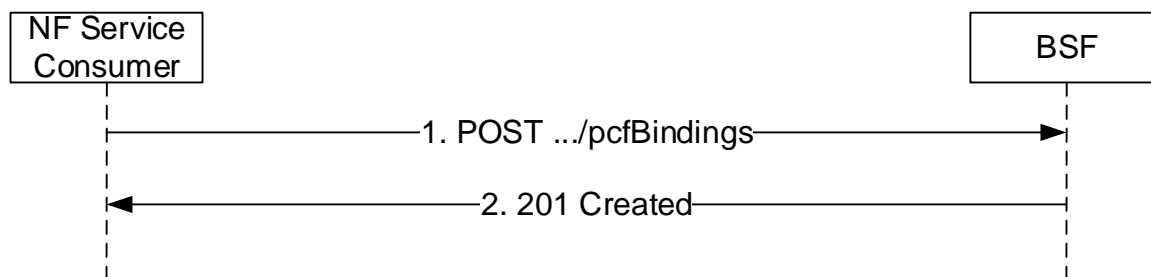


Figure 4.2.2.2-1: NF service consumer register a new PCF for a PDU Session binding information

The NF service consumer shall invoke the Nbsf_Management_Register service operation to register the PDU session binding information for a UE in the BSF. The NF service consumer shall send for this an HTTP POST request with "{apiRoot}/nbsf-management/<apiVersion>/pcfBindings" as Resource URI representing the "PCF for a PDU Session Bindings", as shown in figure 4.2.2.2-1, step 1, to create a binding information for an "Individual PCF for a PDU Session Binding" according to the information (e.g. UE address(es), SUPI, GPSI, DNN, S-NSSAI) in the message body. When the "ExtendedSamePcf" feature is not supported, the "PcfBinding" data structure provided in the request body shall include:

- if the "MultiUeAddr" feature is not supported or not yet known, address information of the served UE consisting of:
 - either IP address information consisting of:
 - + the IPv4 address encoded as "ipv4Addr" attribute; and/or
 - + the /128 IPv6 address, the IPv6 address prefix or an IPv6 prefix shorter than /64 encoded as "ipv6Prefix" attribute; or
 - the MAC address encoded as "macAddr48" attribute;
 Otherwise, address information of the served UE consisting of:
 - any IP address information consisting of:
 - + the IPv4 address encoded as "ipv4Addr" attribute;
 - + the /128 IPv6 address, the IPv6 address prefix or an IPv6 prefix shorter than /64 encoded as "ipv6Prefix" attribute; and/or
 - + the additional /128 IPv6 addresses, the IPv6 address prefixes or IPv6 prefixes shorter than /64 encoded as "addIpv6Prefixes" attribute; or
 - the MAC address encoded as "macAddr48" attribute and/or the additional MAC addresses encoded as "addMacAddrs" attribute;
- PCF address information consisting of:
 - if the PCF supports the Npcf_PolicyAuthorization service:
 - + the FQDN of the PCF encoded as "pcfFqdn" attribute; and/or
 - + a description of IP endpoints at the PCF hosting the Npcf_PolicyAuthorization service encoded as "pcfIpEndPoints" attribute; and
 - if the PCF supports the Rx interface:
 - + the Diameter host id of the PCF encoded as "pcfDiamHost"; and
 - + the Diameter realm of the PCF encoded as "pcfDiamRealm" attributes;