
**Personal protective equipment —
Safety footwear**

Équipement de protection individuelle — Chaussures de sécurité

iTeh Standards
(<https://standards.iteh.ai>)
Document Preview

ISO 20345:2021

<https://standards.iteh.ai/catalog/standards/iso/06c42dbd-99ab-4abf-9690-e5a1b55c8491/iso-20345-2021>



iTeh Standards
(<https://standards.iteh.ai>)
Document Preview

ISO 20345:2021

<https://standards.iteh.ai/catalog/standards/iso/06c42dbd-99ab-4abf-9690-e5a1b55c8491/iso-20345-2021>



COPYRIGHT PROTECTED DOCUMENT

© ISO 2021

All rights reserved. Unless otherwise specified, or required in the context of its implementation, no part of this publication may be reproduced or utilized otherwise in any form or by any means, electronic or mechanical, including photocopying, or posting on the internet or an intranet, without prior written permission. Permission can be requested from either ISO at the address below or ISO's member body in the country of the requester.

ISO copyright office
CP 401 • Ch. de Blandonnet 8
CH-1214 Vernier, Geneva
Phone: +41 22 749 01 11
Email: copyright@iso.org
Website: www.iso.org

Published in Switzerland

Contents

Page

Foreword	v
1 Scope	1
2 Normative references	1
3 Terms and definitions	1
4 Classification and designs	8
5 Basic requirements for safety footwear	9
5.1 General	9
5.2 Design	12
5.2.1 General	12
5.2.2 Height of upper	12
5.2.3 Heel area	12
5.3 Whole footwear	13
5.3.1 Constructional performance	13
5.3.2 Toe protection	13
5.3.3 Leak proofness	15
5.3.4 Specific ergonomic features	15
5.3.5 Slip resistance	15
5.3.6 Innocuousness	16
5.3.7 Seam strength	16
5.4 Upper	16
5.4.1 General	16
5.4.2 Thickness	17
5.4.3 Tear strength	17
5.4.4 Tensile properties	18
5.4.5 Flexing resistance	18
5.4.6 Water vapour permeability and coefficient	18
5.4.7 Resistance to hydrolysis	18
5.5 Lining	19
5.5.1 General	19
5.5.2 Tear strength	19
5.5.3 Abrasion resistance	19
5.5.4 Water vapour permeability and coefficient	19
5.6 Tongue	19
5.6.1 General	19
5.6.2 Tear strength	20
5.7 Insole, insock and footbed	20
5.7.1 Thickness	20
5.7.2 Water permeability	20
5.7.3 Water absorption and desorption	20
5.7.4 Abrasion resistance	20
5.8 Outsole	20
5.8.1 General	20
5.8.2 Design	21
5.8.3 Tear strength	21
5.8.4 Abrasion resistance	21
5.8.5 Flexing resistance	22
5.8.6 Resistance to hydrolysis	22
5.8.7 Interlayer bond strength	22
6 Additional requirements for safety footwear	22
6.1 General	22
6.2 Whole footwear	24
6.2.1 Perforation resistance	24

6.2.2	Electrical properties.....	26
6.2.3	Resistance to inimical environments.....	26
6.2.4	Energy absorption of seat region.....	26
6.2.5	Water resistance.....	27
6.2.6	Metatarsal protection.....	27
6.2.7	Ankle protection.....	27
6.2.8	Cut resistance.....	28
6.2.9	Scuff cap abrasion.....	28
6.2.10	Slip resistance.....	28
6.3	Upper — Water penetration and absorption.....	29
6.4	Outsole.....	29
6.4.1	Resistance to hot contact.....	29
6.4.2	Resistance to fuel oil.....	29
6.4.3	Ladder grip.....	29
7	Marking.....	29
8	Manufacturer's instructions and information.....	31
8.1	General.....	31
8.2	Electrical properties.....	31
8.2.1	Partially conductive footwear.....	31
8.2.2	Antistatic footwear.....	32
8.3	Insocks.....	33
8.4	Perforation resistance.....	33
8.5	Date of obsolescence.....	33
Annex A	(normative) Customized safety footwear (safety footwear adapted to fit an individual user or a single unit to fit an individual user).....	34
Annex B	(informative) Assessment of the footwear by the wearer.....	38
Annex C	(informative) Slip resistance.....	40
Bibliography	43

ISO 20345:2021

<https://standards.iteh.ai/catalog/standards/iso/06c42dbd-99ab-4abf-9690-e5a1b55c8491/iso-20345-2021>

Foreword

ISO (the International Organization for Standardization) is a worldwide federation of national standards bodies (ISO member bodies). The work of preparing International Standards is normally carried out through ISO technical committees. Each member body interested in a subject for which a technical committee has been established has the right to be represented on that committee. International organizations, governmental and non-governmental, in liaison with ISO, also take part in the work. ISO collaborates closely with the International Electrotechnical Commission (IEC) on all matters of electrotechnical standardization.

The procedures used to develop this document and those intended for its further maintenance are described in the ISO/IEC Directives, Part 1. In particular, the different approval criteria needed for the different types of ISO documents should be noted. This document was drafted in accordance with the editorial rules of the ISO/IEC Directives, Part 2 (see www.iso.org/directives).

Attention is drawn to the possibility that some of the elements of this document may be the subject of patent rights. ISO shall not be held responsible for identifying any or all such patent rights. Details of any patent rights identified during the development of the document will be in the Introduction and/or on the ISO list of patent declarations received (see www.iso.org/patents).

Any trade name used in this document is information given for the convenience of users and does not constitute an endorsement.

For an explanation of the voluntary nature of standards, the meaning of ISO specific terms and expressions related to conformity assessment, as well as information about ISO's adherence to the World Trade Organization (WTO) principles in the Technical Barriers to Trade (TBT), see www.iso.org/iso/foreword.html.

ISO 20345 was prepared by the European Committee for Standardization (CEN) Technical Committee CEN/TC 161, *Foot and leg protectors*, in collaboration with Technical Committee ISO/TC 94, *Personal safety — Protective clothing and equipment*, Subcommittee SC 3, *Foot protection*, in accordance with the Agreement on technical cooperation between ISO and CEN (Vienna Agreement).

This third edition cancels and replaces the second edition (ISO 20345:2011), which has been technically revised. The main changes compared to the previous edition are as follows:

- revision of the terms and definitions in [Clause 3](#);
- [Figure 1](#) to [Figure 4](#) revised;
- [Tables 1, 2](#) and [3](#) revised;
- heel area defined ([5.2.3](#));
- toe protection, depending on ISO 22568-1 and ISO 22568-2, exchanging EN 12568:2010;
- requirement on slip resistance revised ([5.3.5](#) and [6.2.10](#)); marking “SRA, SRB and SRC” deleted; marking “SR” and “Ø” introduced;
- pH value and chromium VI tests added in [5.3.6](#); former separate clauses under upper, lining, tongue and insole/insock deleted;
- requirement for seam strength of hybrid footwear added ([5.3.7](#));
- requirement for upper materials not fulfilling WVP explained ([5.4.6](#));
- abrasion of insoles revised ([5.7.4](#));
- outsole requirements revised ([5.8](#));
- outsole thickness revised ([5.8.2.1](#));

ISO 20345:2021(E)

- flexing resistance of outsole clarified ([5.8.5](#));
- perforation resistant insert, depending on ISO 22568-3 and ISO 22568-4, exchanging EN 12568:2010;
- tolerance added ([6.2.3.1](#));
- former [Annex A](#) Hybrid footwear included in the general text ([Table 2](#), [5.4.1.2](#));
- optional requirement of metatarsal protection revised ([6.2.6](#));
- optional requirement on ankle protection clarified ([6.2.7](#));
- optional requirement for “SC” scuff cap abrasion added ([6.2.9](#));
- water penetration and absorption, symbol “WRU” deleted, symbol “WPA” introduced;
- optional requirement for “LG” Ladder grip of outsoles added ([6.4.3](#));
- marking revised ([Table 16](#) and [Table 20](#));
- two new categories added, S6 and S7 ([Table 20](#));
- information on obsolescence date added ([8.5](#));
- [Annex A](#) with requirements for customized safety footwear added;
- [Annex B](#) added;
- [Annex C](#) added;
- requirement for electrically insulating footwear (EN 50321) deleted.

Any feedback or questions on this document should be directed to the user's national standards body. A complete listing of these bodies can be found at www.iso.org/members.html.

ISO 20345:2021

<https://standards.iteh.ai/catalog/standards/iso/06c42dbd-99ab-4abf-9690-e5a1b55c8491/iso-20345-2021>

Personal protective equipment — Safety footwear

1 Scope

This document specifies basic and additional (optional) requirements for safety footwear used for general purpose. It includes, for example, mechanical risks, slip resistance, thermal risks, ergonomic behaviour. It also specifies requirements for safety footwear equipped with customized insoles, customized safety footwear or individual manufactured customized safety footwear. This standard does not cover the property of high visibility because of interaction with the clothing (e.g. trousers cover the footwear) and work area conditions (e.g. dirt, mud).

Special risks are covered by complementary job-related standards (e.g. footwear for firefighters, electrical insulating footwear, protection against chain saw injuries, protection against chemicals and molten metal splash, protection for motorcycle riders).

2 Normative references

The following documents are referred to in the text in such a way that some or all of their content constitutes requirements of this document. For dated references, only the edition cited applies. For undated references, the latest edition of the referenced document (including any amendments) applies.

ISO 20344:2021, *Personal protective equipment — Test methods for footwear*

ISO 22568-1:2019, *Foot and leg protectors — Requirements and test methods for footwear components — Part 1: Metallic toecaps*

ISO 22568-2:2019, *Foot and leg protectors — Requirements and test methods for footwear component — Part 2: Non-metallic toecaps*

EN 13832-3:2018, *Footwear protecting against chemicals — Part 3: Requirements for footwear highly resistant to chemicals under laboratory conditions*

3 Terms and definitions

For the purposes of this document, the following terms and definitions apply.

ISO and IEC maintain terminological databases for use in standardization at the following addresses:

- ISO Online browsing platform: available at <https://www.iso.org/obp>
- IEC Electropedia: available at <https://www.electropedia.org/>

Note 1 to entry The component parts of footwear are illustrated in [Figure 1](#), [Figure 2](#) and [Figure 3](#).

Note 2 to entry Further terms and definitions can be found in ISO 19952^[4].

3.1

safety footwear

footwear incorporating safety features to protect the wearer from injuries that could arise through accidents

Note 1 to entry: Items of safety footwear are fitted with toecaps designed to give protection against impact of at least 200 J and against compression at least 15 kN.

3.2

upper

part or parts of a footwear that cover the toes, the top of the foot, the sides of the foot, and optionally the back of the heel; it is attached to the outsole of a footwear

3.3

leather

hide or skin tanned to be imperishable

3.3.1

leather split

flesh or middle part of a hide or skin, obtained by splitting a *thick leather* (3.3), which is tanned to be imperishable

3.4

rubber

type of elastic *polymeric material* (3.5) which can be vulcanized

3.5

polymeric material

large molecules composed of repeating structural units (monomers) typically connected by chemical bond

EXAMPLE Polyurethane (PU) or polyvinylchloride (PVC).

3.6

insole

non-removable component used to form the base of the shoe to which the *upper* (3.2) is usually attached during lasting

3.7

insock

removable or non-removable footwear component used to cover completely the *insole* (3.6)

3.7.1

seat sock

removable or non-removable footwear component used to cover the *insole* (3.6) in the heel area

3.7.2

footbed

insock (3.7) designed according to the sole of the foot with or without the aim of correcting the posture

Note 1 to entry: "Non-removable" means that the component cannot be removed without any damage.

Note 2 to entry: "Removable" means that the component can be removed, but the safety features are only maintained when it is placed into the footwear while wearing.

3.8

lining

material covering the inner surface of the footwear

Note 1 to entry: The wearer's foot is in direct contact with the lining.

Note 2 to entry: Where an upper is split at the forepart to house the toecap, or if an external piece of material is stitched to the upper to form a pocket to house the toecap, the material under the toecap acts as a lining.

3.9

cleat

protruding part of the outer surface of the *outsole* (3.10)

3.10**outsole**

outermost part to provide footwear with the necessary traction and protection from the floor surfaces it will be in contact with

3.10.1**rigid outsole**

outsole, which can be bent less than an angle of 45° under a load of 30 N

Note 1 to entry: According to ISO 20344:2021, 8.5.

3.10.2**multi-layer outsole**

made up of two or more material layers completely covering the entire surface; a tread cover of less than 0,5 mm is not considered a layer

3.11**perforation-resistant insert**

component, placed in the outsole complex or used as an *insole* (3.6) simultaneously in order to provide protection against perforation

3.12**safety toecap**

component, placed in the footwear to protect the toes of the wearer from impacts and compression

3.13**scuff cap**

abrasion resistant material or component to protect against scuff of the upper external toe region during kneeling activities

3.14**heel area**

counter (stiffener) area, rear part of the footwear

3.15**partially conductive footwear**

footwear with low electrical resistance between the wearer and the ground, able to dissipate static electricity

3.16**antistatic footwear**

footwear maintaining some electrical resistance between the wearer and the ground, able to dissipate some static electricity

3.17**fuel oil**

aliphatic hydrocarbon constituent of petroleum

3.18**customized safety footwear**

covering all individual customized footwear and other specific conditions of a foot

Note 1 to entry: Customized safety Footwear integrate in their design the recipient's own physiognomy and the specific arrangements aimed at modifying, correcting, compensating, curing, preventing, relieving a pathology, e.g. overweight, diabetes, hyperhidrosis, misalignments etc.

Note 2 to entry: Several types of customized safety footwear and footwear adaptations exist:

Type 1 – equipped with customized insoles

Safety footwear (according to this document) incorporating customized insoles adapted to the wearers needs.

Type 2 – modified safety footwear

Safety footwear (according to this document) modified from its original construction to fit to an individual user.

See examples in ISO 21064:2017, 6.4^[5].

Type 3 – Bespoke safety footwear

Safety footwear (according to this document) constructed as a single unit to fit an individual user.

See examples in ISO 21064:2017, 6.3.2 and 6.3.3^[5].

Note 3 to entry: Adapted to fit an individual user or a single unit to fit an individual user.

Note 4 to entry: According to ISO 21064:2017, 3.2^[5].

3.19 hybrid footwear

footwear that cannot be classified as footwear of class I or II

Note 1 to entry: There are two types of hybrid footwear (other than design E boots) see [3.19.1](#) and [3.19.2](#).

3.19.1 hybrid “moulded” footwear

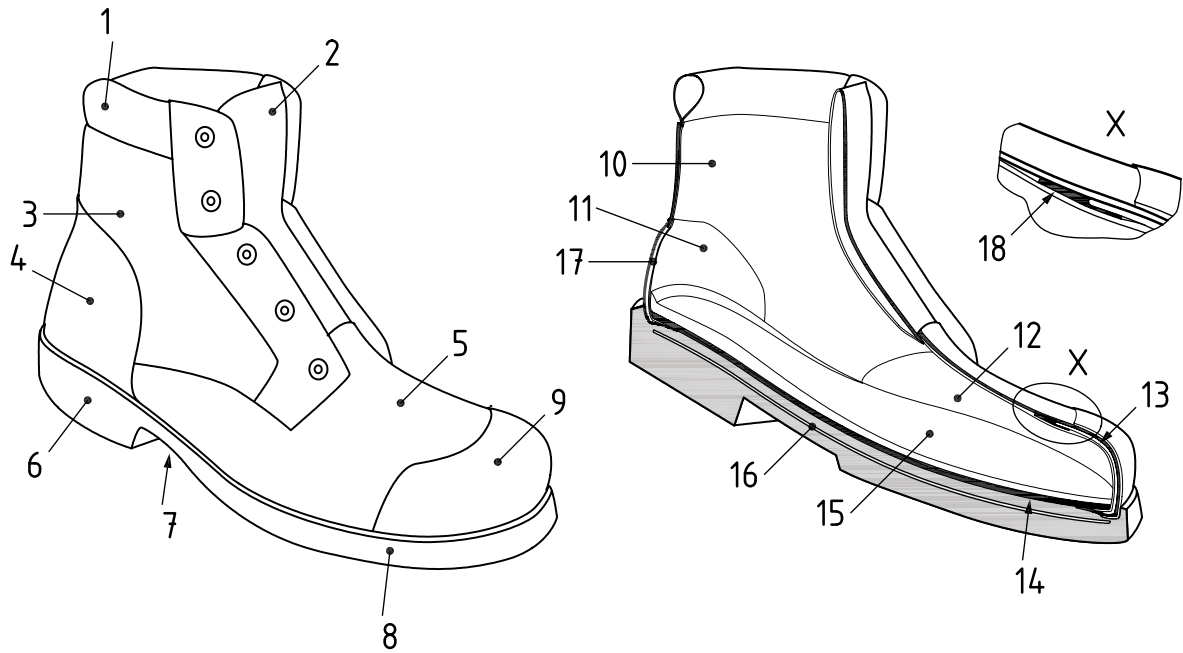
vulcanized rubber or all moulded polymeric foot section integrally moulded around the toecap and often including the outsole, which can be unlined and usually does not incorporate an *insole* ([3.6](#))

3.19.2 hybrid “mounted” footwear

vulcanized rubber or all moulded polymeric foot section that is manufactured separately and then constructed around a conventionally lasted *lining* ([3.8](#))/*insole* ([3.6](#)) construction and often with a separately attached *outsole* ([3.10](#))

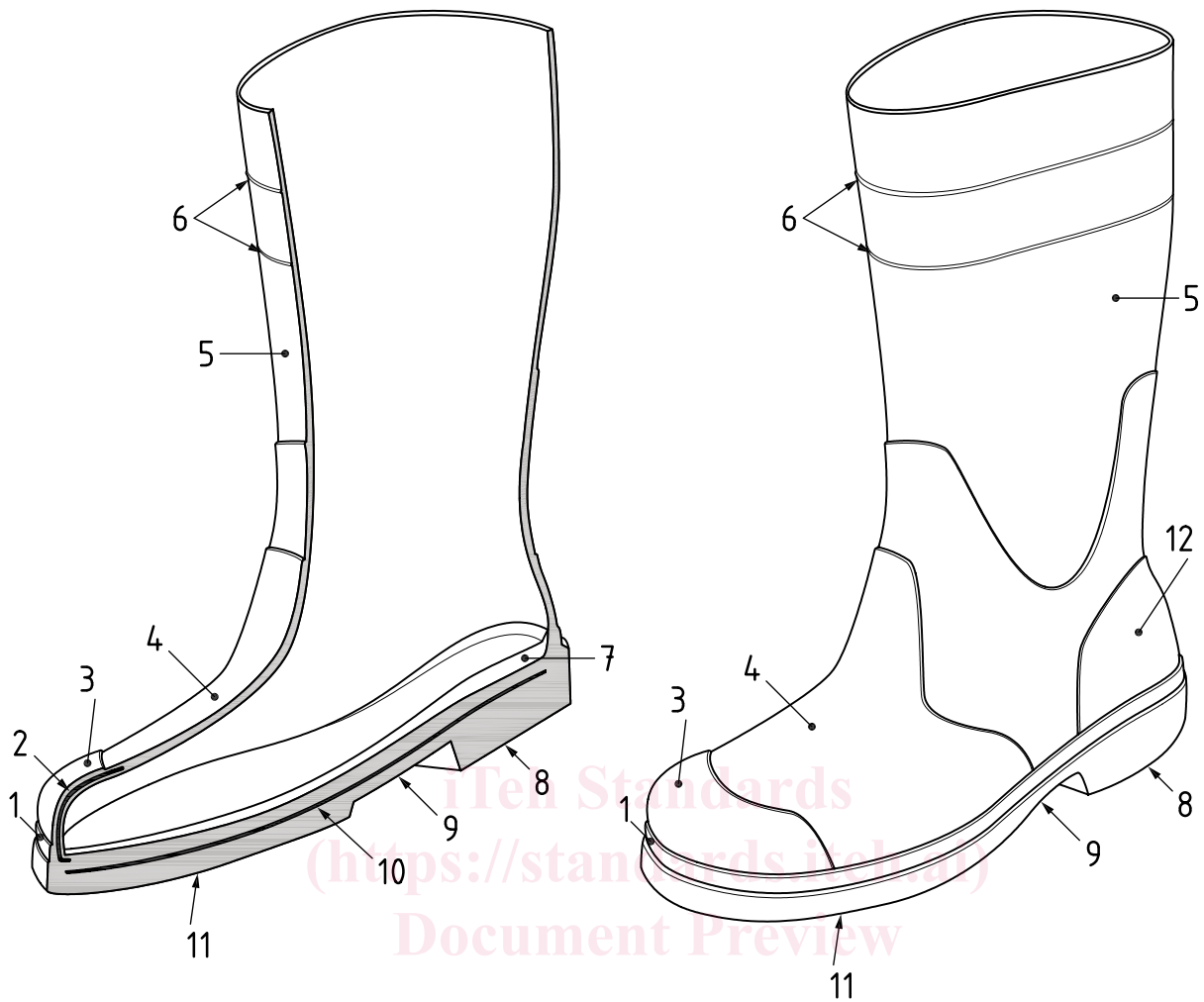
ISO 20345:2021

<https://standards.iteh.ai/catalog/standards/iso/06c42dbd-99ab-4abf-9690-e5a1b55c8491/iso-20345-2021>

**Key**

- | | |
|----------------------|---------------------------------|
| 1 collar | 10 quarter lining |
| 2 tongue | 11 counter lining |
| 3 upper – quarter | 12 vamp lining |
| 4 upper - counter | 13 safety toecap |
| 5 upper - vamp | 14 insole |
| 6 outsole – heel | 15 insock/footbed |
| 7 outsole – waist | 16 perforation resistant insert |
| 8 outsole – forepart | 17 counter stiffener |
| 9 scuff cap | 18 toecap back edge covering |

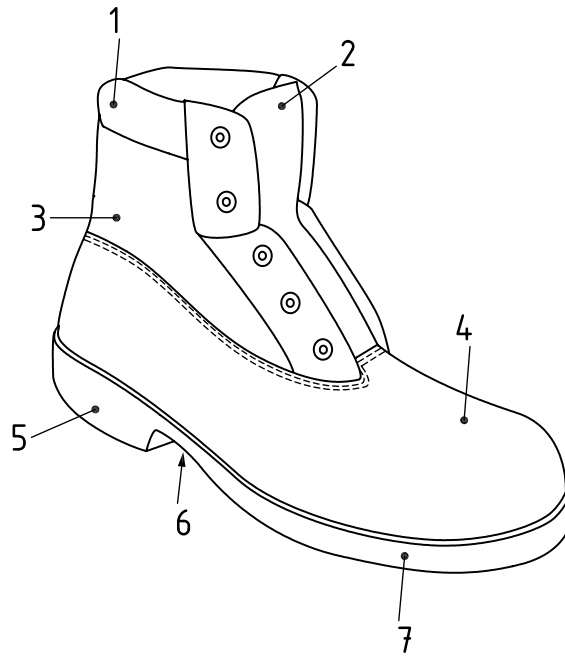
Figure 1 — Example parts of class I safety footwear



Key

- | | |
|-----------------|---------------------------------|
| 1 foxing strip | 7 insock/footbed |
| 2 safety toecap | 8 outsole - heel |
| 3 scuff cap | 9 outsole - waist |
| 4 upper - vamp | 10 perforation resistant insert |
| 5 upper - shaft | 11 outsole - forepart |
| 6 trim marks | 12 upper - counter |

Figure 2 — Example parts of class II safety footwear

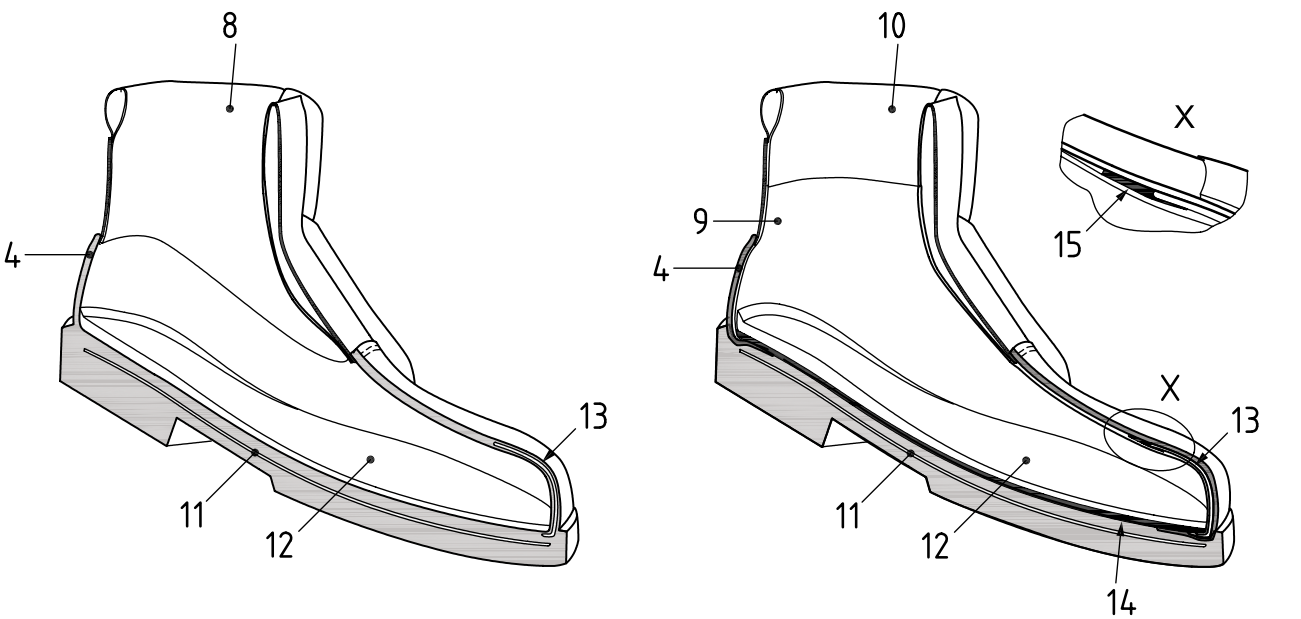


a) Example of hybrid safety footwear in general

iTeh Standards
(<https://standards.iteh.ai>)
Document Preview

ISO 20345:2021

<https://standards.iteh.ai/catalog/standards/iso/06c42dbd-99ab-4abf-9690-e5a1b55c8491/iso-20345-2021>



b) Hybrid moulded (entirely moulded lower section) c) Hybrid mounted (separately attached sole unit)

Key

- 1 collar

2 tongue

3 upper leather or fabric section

4 upper moulded rubber or polymeric part

5 outsole – heel

6 outsole – waist

7 outsole – forepart

8 lining
- 9 foot section lining

10 collar lining

11 perforation resistant insert

12 insock/footbed

13 safety toecap

14 insole

15 toecap back edge covering

Figure 3 — Example parts of hybrid safety footwear

4 Classification and designs

Safety footwear shall be classified in accordance with [Table 1](#). Designs of footwear are illustrated in [Figure 4](#).

Table 1 — Classification of safety footwear

Classification	Description
Class I	Footwear made from leather and other materials, excluding all-rubber or all-polymeric footwear (see Figure 1)
Class II	All-polymeric (i.e. entirely moulded) including all-rubber (i.e. entirely vulcanized) footwear (see Figure 2)
Hybrid footwear	See 3.19 (see Figure 3)