

# ETSI TS 133 127 V15.5.0 (2024-09)



**Digital cellular telecommunications system (Phase 2+) (GSM);  
Universal Mobile Telecommunications System (UMTS);  
LTE;  
5G;  
Lawful Interception (LI) architecture and functions  
(3GPP TS 33.127 version 15.5.0 Release 15)**

<https://standards.iteh.ai>

Document Preview  
ETSI TS 133 127 V15.5.0 (2024-09)

<https://standards.iteh.ai/catalog/standards/etsi/789c6bad-4865-49a9-8c65-4be9034bf04e/etsi-ts-133-127-v15-5-0-2024-09>



---

**Reference**

RTS/TSGS-0333127vf50

---

**Keywords**

5G,GSM,LTE,UMTS

**ETSI**

---

650 Route des Lucioles  
F-06921 Sophia Antipolis Cedex - FRANCE

Tel.: +33 4 92 94 42 00 Fax: +33 4 93 65 47 16

Siret N° 348 623 562 00017 - APE 7112B  
Association à but non lucratif enregistrée à la  
Sous-Préfecture de Grasse (06) N° w061004871

---

**Important notice**

The present document can be downloaded from:  
<https://www.etsi.org/standards-search>

The present document may be made available in electronic versions and/or in print. The content of any electronic and/or print versions of the present document shall not be modified without the prior written authorization of ETSI. In case of any existing or perceived difference in contents between such versions and/or in print, the prevailing version of an ETSI deliverable is the one made publicly available in PDF format at [www.etsi.org/deliver](http://www.etsi.org/deliver).

Users of the present document should be aware that the document may be subject to revision or change of status. Information on the current status of this and other ETSI documents is available at <https://portal.etsi.org/TB/ETSIDeliverableStatus.aspx>

If you find errors in the present document, please send your comment to one of the following services:  
<https://portal.etsi.org/People/CommitteeSupportStaff.aspx>

If you find a security vulnerability in the present document, please report it through our Coordinated Vulnerability Disclosure Program:  
<https://www.etsi.org/standards/coordinated-vulnerability-disclosure>

---

**Notice of disclaimer & limitation of liability**

The information provided in the present deliverable is directed solely to professionals who have the appropriate degree of experience to understand and interpret its content in accordance with generally accepted engineering or other professional standard and applicable regulations.

No recommendation as to products and services or vendors is made or should be implied.

No representation or warranty is made that this deliverable is technically accurate or sufficient or conforms to any law and/or governmental rule and/or regulation and further, no representation or warranty is made of merchantability or fitness for any particular purpose or against infringement of intellectual property rights.

In no event shall ETSI be held liable for loss of profits or any other incidental or consequential damages.

Any software contained in this deliverable is provided "AS IS" with no warranties, express or implied, including but not limited to, the warranties of merchantability, fitness for a particular purpose and non-infringement of intellectual property rights and ETSI shall not be held liable in any event for any damages whatsoever (including, without limitation, damages for loss of profits, business interruption, loss of information, or any other pecuniary loss) arising out of or related to the use of or inability to use the software.

---

**Copyright Notification**

No part may be reproduced or utilized in any form or by any means, electronic or mechanical, including photocopying and microfilm except as authorized by written permission of ETSI.

The content of the PDF version shall not be modified without the written authorization of ETSI.  
The copyright and the foregoing restriction extend to reproduction in all media.

© ETSI 2024.  
All rights reserved.

---

# Intellectual Property Rights

## Essential patents

IPRs essential or potentially essential to normative deliverables may have been declared to ETSI. The declarations pertaining to these essential IPRs, if any, are publicly available for **ETSI members and non-members**, and can be found in ETSI SR 000 314: "*Intellectual Property Rights (IPRs); Essential, or potentially Essential, IPRs notified to ETSI in respect of ETSI standards*", which is available from the ETSI Secretariat. Latest updates are available on the ETSI Web server (<https://ipr.etsi.org/>).

Pursuant to the ETSI Directives including the ETSI IPR Policy, no investigation regarding the essentiality of IPRs, including IPR searches, has been carried out by ETSI. No guarantee can be given as to the existence of other IPRs not referenced in ETSI SR 000 314 (or the updates on the ETSI Web server) which are, or may be, or may become, essential to the present document.

## Trademarks

The present document may include trademarks and/or tradenames which are asserted and/or registered by their owners. ETSI claims no ownership of these except for any which are indicated as being the property of ETSI, and conveys no right to use or reproduce any trademark and/or tradename. Mention of those trademarks in the present document does not constitute an endorsement by ETSI of products, services or organizations associated with those trademarks.

**DECT™**, **PLUGTESTS™**, **UMTS™** and the ETSI logo are trademarks of ETSI registered for the benefit of its Members. **3GPP™** and **LTE™** are trademarks of ETSI registered for the benefit of its Members and of the 3GPP Organizational Partners. **oneM2M™** logo is a trademark of ETSI registered for the benefit of its Members and of the oneM2M Partners. **GSM®** and the GSM logo are trademarks registered and owned by the GSM Association.

---

## Legal Notice

This Technical Specification (TS) has been produced by ETSI 3rd Generation Partnership Project (3GPP).

The present document may refer to technical specifications or reports using their 3GPP identities. These shall be interpreted as being references to the corresponding ETSI deliverables. (2024-09)

The cross reference between 3GPP and ETSI identities can be found under <https://webapp.etsi.org/key/queryform.asp>.

---

## Modal verbs terminology

In the present document "**shall**", "**shall not**", "**should**", "**should not**", "**may**", "**need not**", "**will**", "**will not**", "**can**" and "**cannot**" are to be interpreted as described in clause 3.2 of the [ETSI Drafting Rules](#) (Verbal forms for the expression of provisions).

"**must**" and "**must not**" are **NOT** allowed in ETSI deliverables except when used in direct citation.

# Contents

Intellectual Property Rights .....	2
Legal Notice .....	2
Modal verbs terminology.....	2
Foreword.....	6
Introduction .....	6
1 Scope .....	7
2 References .....	7
3 Definitions, symbols and abbreviations .....	8
3.1 Definitions .....	8
3.2 Symbols.....	8
3.3 Abbreviations .....	8
4 Requirements realisation .....	9
5 Functional architecture .....	10
5.1 General .....	10
5.2 High-level generic LI architecture.....	10
5.3 Functional entities .....	11
5.3.1 Law Enforcement Agency (LEA).....	11
5.3.2 Point of Interception (POI) .....	12
5.3.2.1 General .....	12
5.3.2.2 Directly provisioned and triggered POIs.....	12
5.3.2.3 IRI-POIs and CC-POIs.....	12
5.3.2.4 Failure handling .....	12
5.3.3 Triggering Function .....	12
5.3.4 Mediation and Delivery Function (MDF).....	12
5.3.5 Administrative Function (ADMF) .....	13
5.3.5.1 General .....	13
5.3.5.2 LICF .....	14
5.3.5.3 LIPF .....	14
5.3.6 System Information Retrieval Function (SIRF).....	14
5.3.7 LEMF – Law Enforcement Monitoring Facility.....	14
5.4 LI interfaces.....	15
5.4.1 General.....	15
5.4.2 Interface LI_SI.....	15
5.4.3 Interface LI_HI1 .....	15
5.4.4 Interface LI_X1 .....	16
5.4.4.1 General .....	16
5.4.4.2 LIPF and POI .....	16
5.4.4.3 LIPF and TF .....	16
5.4.4.4 LIPF and MDF2/MDF3 .....	17
5.4.5 Interface LI_X2 .....	17
5.4.6 Interface LI_X3 .....	17
5.4.7 Interface LI_T .....	17
5.4.7.1 General .....	17
5.4.7.2 Interface LI_T2 .....	18
5.4.7.3 Interface LI_T3 .....	18
5.4.8 Interface LI_HI2 .....	18
5.4.9 Interface LI_HI3 .....	18
5.4.10 Interface LI_HI4 .....	18
5.4.10.1 General .....	18
5.4.10.2 LI operation notification .....	18
5.4.10.3 Contents of the notification.....	19
5.4.11 Interface LI_ADMF .....	19

5.4.12	Interface LI_MDF.....	19
5.5	LI service discovery .....	19
5.6	LI in a virtualised environment .....	19
5.6.1	General.....	19
5.6.2	Virtualised deployment architecture .....	20
6	Network layer based interception.....	21
6.1	General .....	21
6.2	5G.....	21
6.2.1	General.....	21
6.2.2	LI at AMF.....	22
6.2.2.1	Architecture.....	22
6.2.2.2	Target identities.....	23
6.2.2.3	Identity privacy .....	24
6.2.2.4	IRI events .....	24
6.2.2.5	Common IRI parameters .....	24
6.2.2.6	Specific IRI parameters.....	25
6.2.2.7	Network topologies .....	25
6.2.3	LI for SMF/UPF .....	25
6.2.3.1	Architecture.....	25
6.2.3.2	Target identities.....	27
6.2.3.3	IRI events .....	28
6.2.3.4	Common IRI parameters .....	28
6.2.3.5	Specific IRI parameters.....	28
6.2.3.6	Network topologies .....	28
6.2.4	LI at UDM for 5G.....	29
6.2.5	LI at SMSF .....	29
6.2.5.1	Architecture.....	29
6.2.5.2	Target identities.....	30
6.2.5.3	IRI events .....	31
6.2.5.4	Common IRI parameters .....	31
6.2.5.5	Specific IRI parameters.....	31
6.2.5.6	Network topologies .....	31
6.2.6	LI support at NRF.....	31
6.2.6.1	Architecture.....	31
6.2.6.2	LI_SI notifications .....	32
6.2.6.3	LI_SI parameters .....	32
6.2.7	External data storage.....	33
6.3	4G.....	33
6.4	3G.....	33
6.5	VoNR .....	33
7	Service layer based interception.....	34
7.1	General .....	34
7.2	Central subscriber management .....	34
7.2.1	General.....	34
7.2.2	LI at UDM .....	34
7.2.2.1	Architecture.....	34
7.2.2.2	Target identities.....	35
7.2.2.3	Identity privacy .....	36
7.2.2.4	IRI events .....	36
7.2.2.5	Common IRI parameters .....	36
7.2.2.6	Specific IRI parameters.....	36
7.2.2.7	Network topologies .....	36
7.2.3	LI at HSS .....	37
7.3	Location.....	37
7.3.1	General.....	37
7.3.2	Service usage location reporting .....	37
7.3.2.1	General .....	37
7.3.2.2	Embedded location reporting .....	37
7.3.2.3	Separated location reporting.....	37
7.3.3	Lawful Access Location Services (LALS) .....	38

7.3.3.1	General .....	38
7.3.3.2	Target positioning .....	38
7.3.3.2.1	General .....	38
7.3.3.2.2	Immediate location provision .....	39
7.3.3.2.3	Periodic location provision .....	39
7.3.3.3	Triggered location .....	39
7.3.3.4	LI_X2 interface for target positioning and triggered location .....	40
7.3.4	Cell database information reporting .....	41
7.4	IMS .....	42
8	LI security considerations .....	42
8.1	Introduction .....	42
8.2	Architectural alternatives .....	42
8.2.1	Full target list at every POI node .....	42
8.2.2	Full target list only in LICF .....	42
8.2.3	Provisioning for registered users .....	43
8.3	LI key management at ADMF .....	43
8.3.1	General .....	43
8.3.2	Key management .....	43
8.4	Virtualised LI security .....	43
8.4.1	General .....	43
8.5	Points of Interception .....	43
<b>Annex A (informative): 5G LI network topology views .....</b>		<b>45</b>
A.1	Non-roaming scenario .....	45
A.1.1	General .....	45
A.1.2	Service-based representation with point-to-point LI system .....	45
A.2	Interworking with EPC/E-UTRAN .....	46
A.2.1	General .....	46
A.2.2	Topology view for a non-roaming scenario .....	47
A.3	Multiple DN connections in a PDU session .....	49
A.3.1	General .....	49
A.3.2	Topology view for a non-roaming scenario .....	49
A.4	Non-3GPP access in a non-roaming scenario .....	51
A.4.1	General .....	51
A.4.2	Topology view .....	51
<b>Annex Z (informative): Change history .....</b>		<b>53</b>
History .....		54

---

# Foreword

This Technical Specification has been produced by the 3rd Generation Partnership Project (3GPP).

The contents of the present document are subject to continuing work within the TSG and may change following formal TSG approval. Should the TSG modify the contents of the present document, it will be re-released by the TSG with an identifying change of release date and an increase in version number as follows:

Version x.y.z

where:

- x the first digit:
  - 1 presented to TSG for information;
  - 2 presented to TSG for approval;
  - 3 or greater indicates TSG approved document under change control.
- y the second digit is incremented for all changes of substance, i.e. technical enhancements, corrections, updates, etc.
- z the third digit is incremented when editorial only changes have been incorporated in the document.

---

# Introduction

The present document has been produced by the 3GPP TSG SA to standardise Lawful Interception of telecommunications. The present document specifies the architecture and functions required to support Lawful Interception in 3GPP networks. Lawful Interception shall always be done in accordance with the applicable national or regional laws and technical regulations. Such national laws and regulations define the extent to which functional capabilities in the present document are applicable in specific jurisdictions.

[ETSI TS 133 127 V15.5.0 \(2024-09\)](https://standards.iteh.ai/catalog/standards/etsi/789c6bad-4865-49a9-8c65-4be9034bf04e/etsi-ts-133-127-v15-5-0-2024-09)

<https://standards.iteh.ai/catalog/standards/etsi/789c6bad-4865-49a9-8c65-4be9034bf04e/etsi-ts-133-127-v15-5-0-2024-09>

---

# 1 Scope

The present document specifies both the architectural and functional system requirements for Lawful Interception (LI) in 3GPP networks. The present document provides an LI architecture supporting both network layer based and service layer based Interception.

National regulations determine the specific set of LI functional capabilities that are applicable to a specific 3GPP operator deployment.

---

# 2 References

The following documents contain provisions which, through reference in this text, constitute provisions of the present document.

- References are either specific (identified by date of publication, edition number, version number, etc.) or non-specific.
- For a specific reference, subsequent revisions do not apply.
- For a non-specific reference, the latest version applies. In the case of a reference to a 3GPP document (including a GSM document), a non-specific reference implicitly refers to the latest version of that document *in the same Release as the present document*.

- [1] 3GPP TR 21.905: "Vocabulary for 3GPP Specifications".
- [2] 3GPP TS 23.501: "System Architecture for the 5G System".
- [3] 3GPP TS 33.126: "Lawful interception requirements".
- [4] 3GPP TS 23.502: "Procedures for the 5G System; Stage 2".
- [5] 3GPP TS 23.271: "Functional stage 2 description of Location Services (LCS)".
- [6] OMA-TS-MLP-V3\_5-20181211-C: "Open Mobile Alliance; Mobile Location Protocol, Candidate Version 3.5", [https://www.openmobilealliance.org/release/MLS/V1\\_4-20181211-C/OMA-TS-MLP-V3\\_5-20181211-C.pdf](https://www.openmobilealliance.org/release/MLS/V1_4-20181211-C/OMA-TS-MLP-V3_5-20181211-C.pdf).
- [7] ETSI TS 103 120: "Lawful Interception (LI); Interface for warrant information".
- [8] ETSI TS 103 221-1: "Lawful Interception (LI); Part 1: Internal Network Interface X1 for Lawful Interception".
- [9] 3GPP TS 33.501: "Security Architecture and Procedures for the 5G System".
- [10] ETSI GR NFV-SEC 011: "Network Functions Virtualisation (NFV); Security; Report on NFV LI Architecture".
- [11] 3GPP TS 33.107: "3G Security; Lawful interception architecture and functions".
- [12] 3GPP TS 23.214: "Architecture enhancements for control and user plane separation of EPC nodes; Stage 2".
- [13] 3GPP TS 23.228: "IP Multimedia Subsystem (IMS); Stage 2".
- [14] 3GPP TS 38.413: "NG-RAN; NG Application Protocol (NGAP)".
- [15] 3GPP TS 33.128: "Protocol and Procedures for Lawful Interception; Stage 3".

## 3 Definitions, symbols and abbreviations

### 3.1 Definitions

For the purposes of the present document, the terms and definitions given in 3GPP TR 21.905 [1] and the following apply. A term defined in the present document takes precedence over the definition of the same term, if any, in 3GPP TR 21.905 [1].

**Content of Communication (CC):** The content of communication as forwarded from the Mediation and Delivery Function 3 (over the LI\_HI3 interface) to the Law Enforcement Monitoring Facility.

**CUPS:** As defined in 3GPP TS 23.214 [12], represents PLMN with architecture enhancements for control and user plane separation of EPC nodes.

**Intercept Related Information (IRI):** The intercept related information as forwarded from the Mediation and Delivery Function 2 (over the LI\_HI2 interface) to the Law Enforcement Monitoring Facility.

**IRI event:** The network procedure or event that created an xIRI in the Point Of Interception.

**LI component:** The function and equipment involved in handling the Lawful Interception functionality in the CSP's network.

**LI system:** The collection of all LI components involved in handling the Lawful Interception functionality in the CSP's network.

**Provisioning:** The action taken by the CSP to provide its Lawful Interception functions information that identifies the target and the specific communication services of interest to the LEA, sourced from the LEA provided warrant.

**Triggering:** The action taken by a dedicated function (Triggering Function) to provide another dedicated function (Triggered POI), that Provisioning could not directly be applied to, with information that identifies the specific target communication to be intercepted.

**Warrant:** The formal mechanism to require Lawful Interception from a LEA served to the CSP on a single target identifier. Depending on jurisdiction also known as: intercept request, intercept order, lawful order, court order, lawful order or judicial order (in association with supporting legislation).

**xCC:** The content of communication as forwarded from the Point Of Interception (over the LI\_X3) interface to the Mediation and Delivery Function 3.

**xIRI:** The intercept related information as forwarded from the Point Of Interception (over the LI\_X2) interface to the Mediation and Delivery Function 2.

### 3.2 Symbols

### 3.3 Abbreviations

For the purposes of the present document, the abbreviations given in 3GPP TR 21.905 [1] and the following apply. An abbreviation defined in the present document takes precedence over the definition of the same abbreviation, if any, in 3GPP TR 21.905 [1].

5GC	5G Core Network
5GS	5G System
ADMF	LI Administration Function
AMF	Access Management Function
AUSF	Authentication Server Function
CC	Content of Communication
CSI	Cell Supplemental Information
CSP	Communication Service Provider
CUPS	Control and User Plane Separation
DN	Data Network

GPSI	Generic Public Subscription Identifier
IP	Interception Product
IRI	Intercept Related Information
LALS	Lawful Access Location Services
LEA	Law Enforcement Agency
LEMF	Law Enforcement Monitoring Facility
LI	Lawful Interception
LICA	Lawful Interception Certificate Authority
LICF	Lawful Interception Control Function
LI_HI1	Lawful Interception Handover Interface 1
LI_HI2	Lawful Interception Handover Interface 2
LI_HI3	Lawful Interception Handover Interface 3
LI_HI4	Lawful Interception Handover Interface 4
LIPF	Lawful Interception Provisioning Function
LIR	Location Immediate Request
LI_SI	Lawful Interception System Information Interface
LI_X0	Lawful Interception Internal Interface 0
LI_X1	Lawful Interception Internal Interface 1
LI_X2	Lawful Interception Internal Interface 2
LI_X3	Lawful Interception Internal Interface 3
LMF	Location Management Function
LTF	Location Triggering Function
MDF	Mediation and Delivery Function
MDF2	Mediation and Delivery Function 2
MDF3	Mediation and Delivery Function 3
N3IWF	Non 3GPP Inter Working Function
NPLI	Network Provided Location Information
NR	New Radio
NRF	Network Repository Function
NSSF	Network Slice Selection Function
PCF	Policy Control Function
PEI	Permanent Equipment Identifier
POI	Point Of Interception
SIRF	System Information Retrieval Function
SMF	Session Management Function
SMSF	SMS-Function
SUCI	Subscriber Concealed Identifier
SUPI	Subscriber Permanent Identifier
TF	Triggering Function
UDM	Unified Data Management
UDR	Unified Data Repository
UDSF	Unstructured Data Storage Function
UPF	User Plane Function
xCC	LI_X3 Communications Content
xIRI	LI_X2 Intercept Related Information

## 4 Requirements realisation

The LI architecture set out in the present document is designed to allow CSP deployments to meet the set of LI requirements described in TS 33.126 [3] that are determined to be applicable by the relevant national regulation for that deployment. For more details on the relationship between LI requirements and national legislation, see TS 33.126 [3] clause 4.

A CSP may deploy different network technologies or services considered in the present document. A CSP should consider each of these network technologies or services separately with respect to the present document, bearing in mind that a different subset of LI requirements may apply according to relevant national legislation, and that a warrant may require the CSP to intercept multiple network technologies or services.

---

## 5 Functional architecture

### 5.1 General

The following clauses describe the high-level functional architecture for LI for 3GPP-defined services and network technologies. It describes the architectural elements necessary for LI, their roles and responsibilities, and the interfaces and interactions between them.

Clauses 6 and 7 of the present document describe how the LI for various 3GPP-defined network technologies and services are realised within the generic LI architecture, including associations of LI architectural elements with the network functions involved.

Not all LI architectural elements and interfaces are used in all network technologies and services.

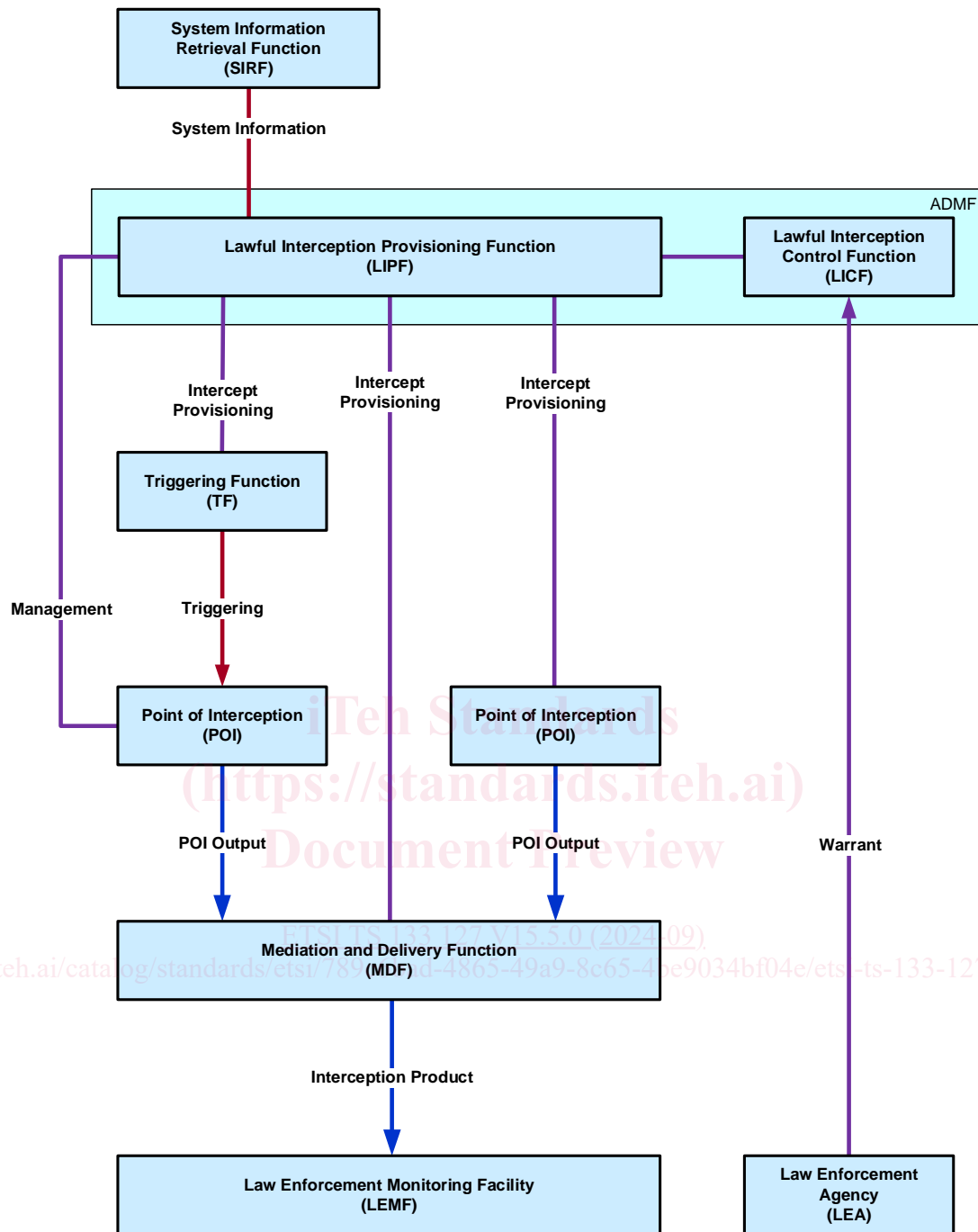
### 5.2 High-level generic LI architecture

The overall conceptual view of LI architecture is shown in figure 5.2-1 below.

**iTeh Standards**  
**(<https://standards.iteh.ai>)**  
**Document Preview**

[ETSI TS 133 127 V15.5.0 \(2024-09\)](https://standards.iteh.ai/catalog/standards/etsi/789c6bad-4865-49a9-8c65-4be9034bf04e/etsi-ts-133-127-v15-5-0-2024-09)

<https://standards.iteh.ai/catalog/standards/etsi/789c6bad-4865-49a9-8c65-4be9034bf04e/etsi-ts-133-127-v15-5-0-2024-09>



**Figure 5.2-1: A high-level generic view of LI architecture**

The functional entities of the architecture are described in more detail in clause 5.3 below. Details of the specific interfaces between these entities are described in clause 5.4.

## 5.3 Functional entities

### 5.3.1 Law Enforcement Agency (LEA)

In general the LEA is responsible for submitting the warrant to the CSPs, although in some countries the warrant may be provided by a different legal entity (e.g. judiciary).

## 5.3.2 Point of Interception (POI)

### 5.3.2.1 General

The **Point of Interception (POI)** detects the target communication, derives the intercept related information or communications content from the target communications and delivers the POI Output as xIRI to the MDF2 or as xCC to the MDF3. The output of a POI is determined by the type of the NF associated with the POI. A POI may be embedded within a Network Function (NF) or separate from a NF with which it is associated.

Multiple POIs may have to be involved in executing a warrant.

### 5.3.2.2 Directly provisioned and triggered POIs

POIs are divided into two categories:

- Directly provisioned POIs are provisioned by the LIPF.
- Triggered POIs are triggered by a Triggering Function (TF) (see clause 5.3.3).

The directly provisioned POIs detect the target's communications that need to be intercepted, and then derive the intercept related information or communication contents from that target communications depending on the POI type (see clause 5.3.2.3). The triggered POIs detect the target communications based on the trigger received from an associated Triggering Function and then derives the intercept related information or communication contents of target communications depending on the POI type (see clause 5.3.2.3).

### 5.3.2.3 IRI-POIs and CC-POIs

POIs are divided into two types for each category based on the type of data they send to the MDF (see clause 5.3.4):

- IRI-POI delivers xIRI to the MDF2.
- CC-POI delivers xCC to the MDF3.

Both IRI-POIs and CC-POIs are either directly provisioned or triggered (see clause 5.3.2.2).

### 5.3.2.4 Failure handling

In case a network procedure involving the target UE and requiring the generation of an xIRI fails, the IRI-POI shall be able to report the failure reason available from the involved network protocol.

## 5.3.3 Triggering Function

The Triggering Function is provisioned by the LIPF and is responsible for triggering triggered POIs in response to network and service events matching the criteria provisioned by the LIPF. The Triggering Function detects the target communications and sends a trigger to the associated triggered POI.

As a part of this triggering, the Triggering Function shall send all necessary interception rules (i.e. rules that allow the POIs to detect the target communications), forwarding rules (i.e. MDF2, MDF3 address), target identity, and the correlation information.

A Triggering Function may interact with other POIs to obtain correlation information. Details of this interface are not specified by the present document.

The Triggering Function that triggers CC-POI is referred to as a CC-TF and the Triggering Function that triggers an IRI-POI is referred to as IRI-TF.

## 5.3.4 Mediation and Delivery Function (MDF)

The **Mediation and Delivery Function (MDF)** delivers the Interception Product to the Law Enforcement Monitoring Facility (LEMF).

Two variations of MDF are defined: MDF2 and MDF3.

MDF2 generates the IRI messages from the xIRI and sends them to one or more LEMFs. The MDF3 generates the CC from the xCC and delivers it to one or more intercepting LEMFs. An overview of this is shown in figure 5.3-2 below.

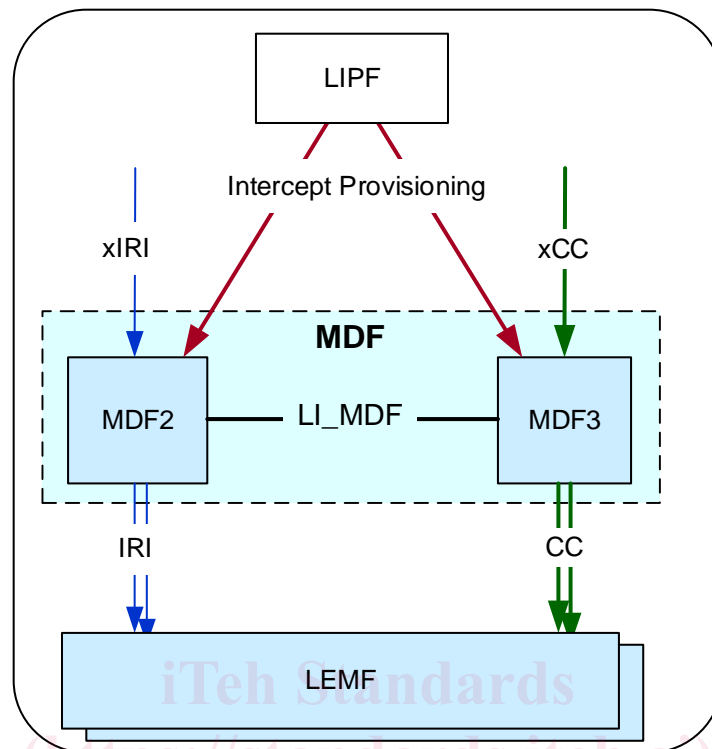


Figure 5.3-2: MDF2 and MDF3

The MDF2 and MDF3 are provisioned by the LIPF with the intercept information necessary to deliver the IRI and/or CC to one or more LEMFs.

The LI\_MDF interface between MDF2 and MDF3 (shown in figure 5.3-2) allows the MDF3 and MDF2 to exchange information between the two.

## 5.3.5 Administrative Function (ADMF)

### 5.3.5.1 General

The **Administration Function (ADMF)**, responsible for the overall management of the LI system, includes the two logical functions:

- Lawful Interception Control Function (LICF).
- Lawful Interception Provisioning Function (LIPF).

Within one ADMF there is one LICF, and at least one, but possibly multiple LIPFs.

The ADMF contains the issuing Certificate Authority (CA) for all LI components (POIs, MDFs etc.). Further details are defined in clause 8.3.

**NOTE:** It is assumed that the LICF is always implemented on dedicated LI infrastructure which is only accessible to CSP personnel explicitly authorised to handle LI. However, the LIPF is assumed in some scenarios (e.g. virtualisation) to be implemented within the main CSP network infrastructure environment, although still only accessible to LI authorised CSP personnel.