



Designation: ~~C1221-92 (Reapproved 2004)~~ Designation: C1221 - 10

Standard Test Method for Nondestructive Analysis of Special Nuclear Materials in Homogeneous Solutions by Gamma-Ray Spectrometry¹

This standard is issued under the fixed designation C1221; the number immediately following the designation indicates the year of original adoption or, in the case of revision, the year of last revision. A number in parentheses indicates the year of last reapproval. A superscript epsilon (ϵ) indicates an editorial change since the last revision or reapproval.

1. Scope

1.1 This test method covers the determination of the concentration of gamma-ray emitting special nuclear materials dissolved in homogeneous solutions. The test method corrects for gamma-ray attenuation by the samplesolution and its container by measurement of the transmission of a beam of gamma rays from an external source (Refs. (1), (2), and (3)).²

1.2 Two samplesolution geometries, slab and cylinder, are considered. The samplesolution container that determines the geometry may be either a removable or a fixed geometry container. This test method is limited to samplesolution containers having walls or a top and bottom of equal transmission through which the gamma rays from the external transmission correction source must pass.

1.3 This test method is typically applied to radionuclide concentrations ranging from a few milligrams per litre to several hundred grams per litre. The assay range will be a function of the specific activity of the nuclide of interest, the physical characteristics of the samplesolution container, counting equipment considerations, assay gamma-ray energies, samplesolution matrix, gamma-ray branching ratios, and interferences.

1.4 *This standard does not purport to address all of the safety concerns, if any, associated with its use. It is the responsibility of the user of this standard to establish appropriate safety and health practices and determine the applicability of regulatory limitations prior to use.* For specific hazards, see Section 9.

2. Referenced Documents

2.1 ~~ASTM Standards:~~

~~C859 Terminology Relating to Nuclear Materials~~

~~C982 Guide for Selecting Components for Energy-Dispersive X-Ray Fluorescence (XRF) Systems~~ ASTM Standards:³

~~C1133 Test Method for Nondestructive Assay of Special Nuclear Material in Low-Density Scrap and Waste by Segmented Passive Gamma-Ray Scanning~~

~~C1490 Guide for the Selection, Training and Qualification of Nondestructive Assay (NDA) Personnel~~

~~C1592 Guide for Nondestructive Assay Measurements~~

~~C1673 Terminology of C26.10 Nondestructive Assay Methods~~

~~C1168 Practice for Preparation and Dissolution of Plutonium Materials for Analysis~~

~~E181 Test Methods for Detector Calibration and Analysis of Radionuclides~~

2.2 ~~ANSI Standards:~~⁴

~~ANSI N15.20 Guide to Calibrating Nondestructive Assay Systems~~

~~ANSI N15.35 Guide to Preparing Calibration Material for Nondestructive Assay Systems that Count Passive Gamma Rays~~

~~ANSI N15.37 Guide to the Automation of Nondestructive Assay Systems for Nuclear Material Control~~

~~ANSI N42.14 American National Standard for Calibration and Use of Germanium Spectrometers for the Measurement of Gamma-Ray Emission Rates of Radionuclides~~

~~ANSI/IEEE 645 Test Procedures for High-Purity Germanium Detectors for Ionizing Radiation~~

2.3 ~~U.S. Nuclear Regulatory Commission Regulatory Guides:~~

¹ This test method is under the jurisdiction of ASTM Committee C26 on Nuclear Fuel Cycle and is the direct responsibility of Subcommittee C26.10 on Non-Destructive Assay.

Current edition approved June 1, 2004. Published July 2004. Originally approved in 1992. Last previous edition approved in 1998 as C1221-92 (1998). DOI: 10.1520/C1221-92R04 on Non Destructive Assay.

Current edition approved March 1, 2010. Published April 2010. Originally approved in 1992. Last previous edition approved in 2004 as C1221 - 92 (2004). DOI: 10.1520/C1221-92R10.

² The boldface numbers in parentheses refer to the list of references at the end of this test method.

³ For referenced ASTM standards, visit the ASTM website, www.astm.org, or contact ASTM Customer Service at service@astm.org. For *Annual Book of ASTM Standards* volume information, refer to the standard's Document Summary page on the ASTM website.

⁴ Available from American National Standards Institute (ANSI), 25 W. 43rd St., 4th Floor, New York, NY 10036, <http://www.ansi.org>.

3. Terminology

3.1 For definitions of terms used in this test method, refer to Committee C26.10's Terminology standard, E859C1673.

4. Summary of Test Method

4.1 Many nuclear materials spontaneously emit gamma rays with energies and intensities characteristic of the decaying nuclide. The analysis for these nuclear materials is accomplished by selecting appropriate gamma rays and measuring their intensity to identify and quantify the nuclide.

4.1.1 The gamma-ray spectrum of a portion of solution is obtained with a collimated, high resolution gamma-ray detector.

4.1.2 Count-rate-dependent losses are determined and corrections are made for these losses.

4.1.3 A correction factor for gamma-ray attenuation in the sample solution and its container is determined from the measurement of the transmitted intensity of an external gamma-ray source. The gamma rays from the external source have energies close to those of the assay gamma rays emitted from the sample solution. Figs. 1 and 2 illustrate typical transmission source, sample solution, and detector configurations. Gamma rays useful for assays of ²³⁵U and ²³⁹Pu are listed in Table 1.

4.1.4 The relationship between the measured gamma-ray intensity and the nuclide concentration (the calibration constant) is determined by use of appropriate standards (ANSI N15.20, ANSI N15.35, USNRC Regulatory Guide 5.53, Rev. 1), and Guide C1592.

4.2 In the event that the total element concentration is desired and only one isotope of an element is determined (for example, ²³⁹Pu), the isotopic ratios must be measured or estimated.

5. Significance and Use

5.1 This test method is a nondestructive means of determining the nuclide concentration of a solution for special nuclear material accountancy, nuclear safety, and process control.

5.2 It is assumed that the nuclide to be analyzed is in a homogeneous solution (Practice C1168).

5.3 The transmission correction makes the test method independent of matrix (solution elemental composition and density) and useful over several orders of magnitude of nuclide concentrations. However, a typical configuration will normally span only two to three orders of magnitude because of detector dynamic range.

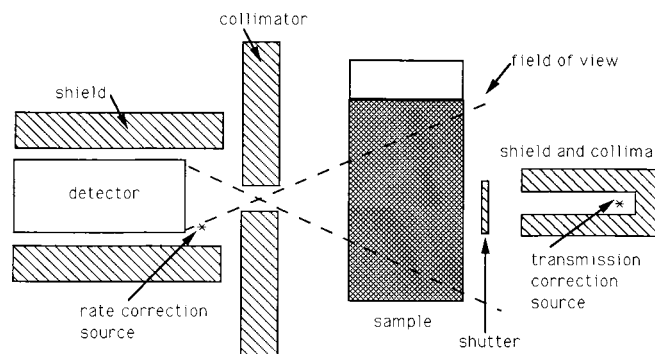
5.4 The test method assumes that the sample-detector-solution-detector geometry is the same for all measured items. This can be accomplished by requiring that the liquid height in the sideloading geometry exceeds the detector field of view defined by the collimator. For the upward-looking geometry, a fixed sample solution fill height must be maintained and vials of identical radii must be used unless the vial radius exceeds the field of view defined by the collimator.

5.5 Since gamma-ray systems can be automated, the test method can be rapid, reliable, and not labor intensive.

5.6 This test method may be applicable to in-line or off-line situations.

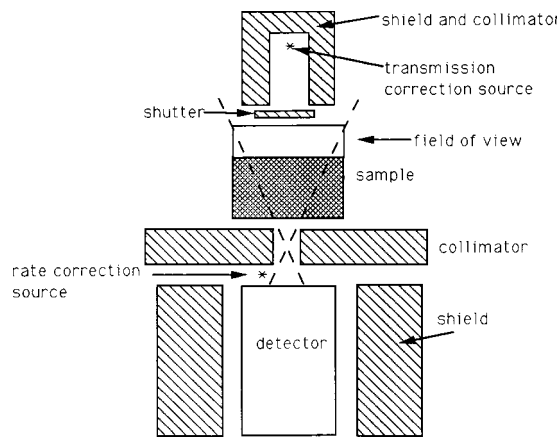
6. Interferences

6.1 Radionuclides may be present in the sample solution, which produce gamma rays with energies that are the same or very nearly the same as the gamma rays suggested for nuclide measurement, count rate correction, or transmission correction. Thus, the corresponding peaks in the gamma-ray spectrum may be unresolved and their areas may not be easily determined unless multiplet fitting techniques are used. In some cases, the nuclide of interest may emit other gamma rays that can be used for analysis or alternative transmission or count rate correction sources may be used.



NOTE 1—The sample geometry may be either cylindrical or a slab. (Not to scale.)

FIG. 1 Schematic of a Sideloading Configuration



NOTE 1—The sample geometry in this case is a slab. (Not to scale.)

FIG. 2 Schematic of an Uplooking Configuration

TABLE 1 Suggested Nuclide/Source Combinations

Nuclide	Peak Energy (keV)	Transmission Source	Peak Energy (keV)	Count Rate Correction Source	Peak Energy (keV)
^{235}U	185.7	^{169}Yb	177.2 198.0	^{241}Am	59.5
^{239}Pu	413.7	^{75}Se	400.1	^{133}Ba	356.3
^{239}Pu	129.3	^{57}Co	122.1 136.5	^{109}Cd	88.0

6.1.1 Occasionally, a significant amount of ^{237}Np is found in a plutonium sample solution. The ^{237}Np daughter, ^{233}Pa , emits a gamma ray at 415.8 keV as well as other gamma rays in the 300 to 400 keV region. These ^{233}Pa gamma rays may interfere with the analysis of ^{239}Pu at 413.7 keV and at several other normally useful ^{239}Pu gamma-ray energies. In this case, the ^{239}Pu gamma ray at 129.3 keV may be a reasonable alternative. In addition, the 398.7 keV gamma ray from ^{233}Pa may interfere with the transmission corrections based on the 400.7 keV ^{75}Se gamma-ray measurements. Multiple fitting techniques can resolve these problems.

6.1.2 ^{169}Yb , used as the transmission source for ^{235}U assays, emits a 63.1 keV gamma ray that may interfere with the measurement of the area of the peak produced by the 59.5 keV gamma ray of ^{241}Am , which is commonly used as the count rate correction source. The 63.1 keV ^{169}Yb gamma ray should be attenuated by placing a cadmium absorber over the transmission source. ^{109}Cd may be a suitable alternative count rate correction source.

6.1.3 In the special case of ^{239}Pu assays using ^{75}Se as a transmission source, random coincident summing of the 136.0 and 279.5 keV gamma-ray emissions from ^{75}Se produces a low intensity sum peak at 415.5 keV that interferes with the peak area calculation for the peak produced by the 413.7 keV gamma ray from ^{239}Pu . The effects of this sum peak interference can be reduced by using absorbers to attenuate the radiation from the ^{75}Se to the lowest intensity required for transmission measurements of acceptable precision. The problem can be avoided entirely by making two separate measurements on each sample; first, measure the peak area of the transmission source with the sample in place and second, measure the peak area of the assay gamma ray while the detector is shielded from the transmission source. An additional benefit of the “dual scan” is a better signal to noise ratio in the individual spectra.

6.1.4 In ^{239}Pu solutions with high activities of ^{241}Am or ^{237}U , or both, the Compton continuum from intense 208.0 keV gamma rays may make the 129.3 keV gamma ray from ^{239}Pu unusable for assays. Also, the 416.0 keV sum peak that results from pileup of the 208.0 keV gamma rays may interfere with the 413.7 keV gamma ray from ^{239}Pu . Use an absorber (for example, 0.5 to 0.8 mm of tungsten) between the detector and sample solution to attenuate the 208.0 keV gamma rays. This will attenuate the intensity of the lower energy gamma rays and also reduce the sum peak interference. The resulting ^{239}Pu assay will be based on the 413.7 keV gamma ray.

6.1.5 X-rays of approximately 88 keV from lead in the shielding may interfere with the measurement of the 88.0 keV gamma-ray peak when ^{109}Cd is used as the count rate correction source. Graded shielding (4) is required to remove the interference.

6.2 Peaks may appear in the spectrum at gamma-ray energies used for analysis when there is no sample solution present. This may be caused by excessive amounts of radioactive material stored in the vicinity of the detector or by contamination of the instrument. This can cause variable and unacceptably high backgrounds leading to poor measurement quality.

6.2.1 Remove unnecessary radioactive material from the vicinity and also restrain movement of radioactive material around the

assay area during measurements. Shielding should be provided that completely surrounds the detector with the exception of the collimator opening. Shielding opposite the detector on the far side of the samplesolution will also reduce the amount of ambient radiation incident on the detector.

6.2.2 Use samplesolution containers that are free of outer surface contamination. Remove any contamination from the instrument that may interfere with analyses. It may not be possible to completely decontaminate in-line instrumentation. In this case, the contamination should be minimized to the extent practical.

6.2.3 The measurement of background should be made at various times during the day. Varying backgrounds can be caused by process activities that often occur on regular schedules. These time-dependent backgrounds might not be detected if the background is checked at the same time each day.

6.3 High-energy gamma rays from fission products in the samplesolution will increase the Compton background and decrease the precision of gamma-ray intensity measurements in the lower energy (<500 keV) region of the spectrum.

6.4 Low energy X- and gamma rays from either the transmission or count rate correction source may contribute significantly to the total system electronic pulse rate causing increased count rate losses and sum peak interferences. An absorber should be fixed between the source and detector to reduce the number of low energy X-rays detected.

7. Apparatus

~~7.1 General guidelines for selection of detectors and signal-processing electronics are discussed in Guide C982 and NRC Regulatory Guide 5.9, Rev. 2. Data acquisition systems are considered in ANSI N15.37 and NRC Regulatory Guide 5.9, Rev. 2. It is recommended that the system have the following components:~~

~~7.1.1~~

~~7.1.1 Gamma-Ray Detector System—General guidelines for selection of detectors and signal-processing electronics are discussed in Guide C1592, and ANSI N42.14. Refer to the References section for a list of other recommended references. This system typically consists of a gamma-ray detector, spectroscopy grade amplifier, high-voltage bias supply, multi-channel analyzer, and detector collimator. The system may also include an oscilloscope, a spectrum stabilizer, a computer, and a printer. General guidelines for selection of detectors and signal-processing electronics are discussed in Guide C1592. Data acquisition systems are considered in ANSI N15.37. It is recommended that the system be implemented by an NDA Professional (C1490). The system should have the following components:~~

~~7.2 High Resolution, Germanium, Gamma-Ray Detector—A coaxial-type detector with full width at half maximum (FWHM) resolution typically less than 850 keV/1000 eV or better at 122 keV and less than 2.0 keV at 1333 keV may be used for the analysis. A planar-type detector with resolution typically less than 600 keV FWHM at 122 keV similar resolution may also be used. The stated resolutions are for guidance only. The selection of detector type, coaxial or planar, should be based on the usual considerations of efficiency and resolution required for the specific application. Test procedures for detectors are given in Test Methods E181 and ANSI/IEEE 645.~~

~~7.1.2 Nuclear Spectroscopy Amplifier—The amplifier capabilities should include selectable pulse shaping time constants, pole zero adjustment, active gated baseline restoration, and pulse pileup rejection. A discussion of these functions is found in Guide C982.~~

~~7.1.3 Oscilloscope, required for proper adjustment of the various amplifier controls and troubleshooting the electronics. The oscilloscope should have selectable time bases ranging from 1 ms/cm to 0.5 μ s/cm (20 MHz) and selectable vertical sensitivities ranging from 5 V/cm to 10 mV/cm.~~

~~7.1.4 High Voltage Bias Supply, equipped with continuously adjustable voltage control with a voltage range compatible with the requirements of the above detector.~~

~~7.1.5 Count-Rate Meter, to monitor the total electronic pulse rate in the system for acceptable rate. It should be compatible with the output of the above amplifier.~~

~~7.1.6 Multichannel Analyzer (MCA)—An MCA with a minimum of 4096 data channels is recommended. The analyzer should operate using a Wilkinson type analog-to-digital converter (ADC) with a minimum ADC clock rate of 100 MHz, or a fixed conversion time ADC with a maximum conversion time of 10 μ s. Anti-coincidence gating for pulse-pile-up rejection, compatible with the above amplifier, and signal level discrimination may be required. Analyzer control, data transfer, and data analysis by computer are recommended. Spectrum display may be provided by the analyzer or computer.~~

~~7.1.7 Digital Spectrum Stabilizer—The stabilizer monitors two separate gamma rays, one at low energy and one at high energy, to control changes in both zero intercept and energy gain. The stabilizer must be compatible with the ADC/MCA combination described in 7.1.6. The peaks chosen for stabilization must be present in every spectrum. Instead of selecting gamma rays for stabilization, a pulser may be used with the spectrum stabilizer. However, when using a pulser, proper precautions must be taken to eliminate added spectral distortions (5).~~

~~7.1.8 Computer System, equipped with sufficient random access memory, disk storage, printer, and terminal is recommended for system control, data reduction, report generation, and operator interface.~~

~~7.2~~

~~7.3 Detector Collimator—The collimator defines the field of view of the detector to a reproducible samplesolution geometry and shields the detector from ambient radiation. This test method addresses two potential sample/collimator/solution/collimator geometries that will dictate the analytical expression used. Other designs require case-by-case assessment.~~

7.2.1The 7.3.1 The collimator in the slab geometry (both upward looking and sidelooking) is a cylindrical hole with its axis normal to the slab. The diameter of the collimator should limit the field of view of the detector to within the samplesolution volume (see Figs. 1 and 2).

7.2.2The 7.3.2 The collimator in the cylindrical geometry should be a slit perpendicular to the axis of the sample:solution. The field of view in this case is within the samplesolution volume in the axial direction (see Fig. 1) and includes the entire samplesolution volume in the radial direction (Fig. 3).

7.3

7.4 Absorber Foils—Absorbers are used to reduce the overall count rate due to low energy X-rays and gamma rays from the solution, transmission source, and count rate correction source. The absorbers are usually cadmium, tin or copper, or combination. Any change of these absorbers requires recalibration of the assay system.

7.5 Count Rate Correction Source—To minimize interferences, the source should be chosen to have gamma-ray energies lower than the gamma rays of interest. The source must be fixed relative to the detector, and its beam relative to the detector must not be attenuated by the sample:solution. See Table 1 for suggested gamma-ray sources.

7.4for suggested gamma-ray sources. Alternatively, commercially available high precision electronic pulsers may be used for count rate correction.

7.6 Transmission Source—The transmission source should preferably emit gamma rays that bracket the energy of the assay gamma ray from the nuclide of interest. A single gamma ray with an energy near the assay gamma ray may be used. Table 1 provides a list of suggested nuclides for use as transmission sources with nuclides of interest. The source activity should typically be a few tens of millicuries. Where a two-measurement assay (as described in 6.1.3) will be used, construct the instrument such that the detector can be shielded from the transmission source during measurement of the assay gamma rays. A computer controlled shutter between the transmission source and samplesolution is ideal for this purpose in an automated system. The transmission source should be placed opposite the detector and shine through the aperture of the detector collimator as illustrated in Fig. 1. The transmission source should shine through the diameter of the sample container in the cylindrical geometry.

7.5Absorber Foils—Absorbers are used to reduce the overall count rate due to low energy X-rays and gamma rays from the sample, transmission source, and count rate correction source. The absorbers are usually cadmium or copper, or both. Any change of these absorbers requires recalibration of the assay system.

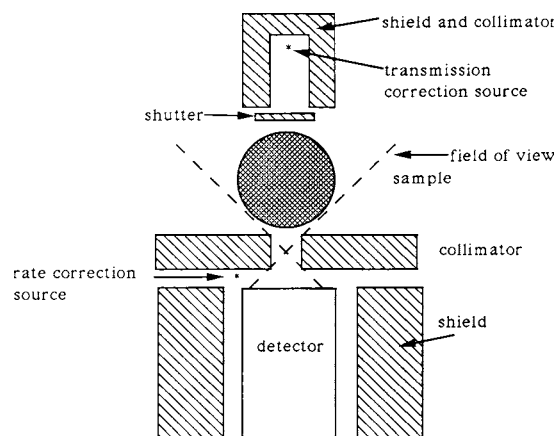
7.6Sample Holder—The sample holder must provide repeatable placement of the sample container between the detector and transmission source. The transmission source should shine through the diameter of the solution container in the cylindrical geometry.

7.7 Sample Container/Solution Holder, either—The solution holder must provide repeatable placement of the solution container between the detector and transmission source.

7.8 Solution Container—Either a removable samplesolution vial with reproducible gamma-ray path length and wall thickness or a fixed-path-length flow-through cell. Low atomic number material should be used in container production to reduce absorption of assay gamma-rays. The equations presented in this test method apply only to samplesolution containers with walls or a top and bottom of equal transmission for the cylindrical and slab geometry configurations, respectively.

8. Reference Materials

8.1 Calibration of the assay system involves using a set of standards to determine the relationship between the observed, corrected count rate of the characteristic gamma ray of a nuclide and the concentration of the nuclide known to be present. After correcting for background, rate-related losses, and attenuation effects, a direct proportionality constant is determined between count rate and nuclide concentration.



NOTE 1—Not to scale.

FIG. 3 Axial View of a Cylindrical Sample Geometry

8.2 Prepare at least three calibration standards for each nuclide to be assayed. Standards should span the expected concentration range of samplesolution. The use of three calibration standards will verify the validity of the transmission correction and the linearity of the instrument. More than three standards may be required if the instrument covers a wide concentration range.

8.2.1 The standards should be certified to contain a known nuclide concentration by an alternative technique traceable to certified reference materials.

~~8.2.2 Standards should be in a matrix providing transmissions similar to those expected for samples and be in the same container geometry to be used for sample assays.~~

8.2.2 Standards should be in a matrix providing transmissions similar to those expected for solutions and be in the same container geometry to be used for solution assays.

8.3 Mathematical calibrations benchmarked to traceable sources may be used in place of physical reference materials. Any calibration must be verified with a working standard or source.

9. Hazards

9.1 Safety:

9.1.1 Transuranic materials are both radioactive and toxic. Adequate laboratory facilities and safe operating procedures must be considered to protect operators from both unnecessary exposure to ionizing radiation and from contamination while handling measurement items.

9.1.2 The recommended analytical procedures call for the use of radioactive sources, some with high levels of ionizing radiation. Consult a qualified health physicist or radiation safety professional concerning exposure problems and leak test requirements before handling radioactive sources.

9.2 Technical:

9.2.1 Prevent counting conditions that may produce spectral distortions.

9.2.1.1 High count rates can cause electronic pulse pileup resulting in peak shape distortion and sum peaks in the spectrum. Pulse pileup rejection circuitry should be used to prevent this. When appropriate, use absorbers to reduce the intensity of low energy X-rays and gamma rays.

9.2.1.2 Changing temperature and humidity in the measurement environment may cause gain and zero-level shifts of the gamma-ray spectrum. Employ environmental controls or digital stabilization to minimize shifts.

9.2.1.3 Failure to isolate electronic components from other electrical equipment may cause noise pickup in the high voltage and signal cables leading to spectral distortions. Noise in the AC power supply will also produce spectral distortions.

9.2.2 Locate the instrument in an area with as low a gamma-ray background as practical. Prohibit the movement of containers of radioactive material in the vicinity of the instrument while an assay is underway.

9.2.3 Keep the instrument, and especially the samplesolution holder and detector, as free of radioactive contamination as practical. This contamination causes an increase in background counts which decreases the signal-to-noise ratio in analysis and causes biases if not corrected.

9.2.4 Minimize the exposure of the detector to neutrons by not storing neutron emitting samplesolutions or sources on or near the detector. Leave samplesolutions in the samplesolution holder only as long as is required for measurement.

10. Preparation of Apparatus

10.1 Adjust instrument settings in accordance with manufacturers' instructions and good spectroscopic practices.

10.2 Choose collimator and samplesolution holder size to define geometry such that a fixed volume of samplesolution is viewed. Refs. (3) and (6) provide guidance on recommended samplesolution diameters and sample-to-detectorsolution-to-detector distances.

10.3 Base the selection of the 129.3 keV or 413.7 keV gamma ray for analysis of ²³⁹Pu on the plutonium concentration and possible interferences (7, 8).

10.3.1 Analysis of solutions of ²³⁹Pu greater than approximately 200 g Pu/l should be based on the 413.7 keV gamma ray. This is due to the increased samplesolution self-attenuation of the 129.3 keV gamma ray and the increased uncertainty associated with its use. Interferences from ²³⁷Np as discussed in 6.1.1 may preclude the use of the 413.7 keV gamma ray.

10.3.2 The more intense 129.3 keV gamma ray is preferred for analysis of ²³⁹Pu in solutions of less than approximately 200 g Pu/l. However, interferences from high activities of ²⁴¹Am or ²³⁷U, or both, may make the 413.7 keV gamma ray the preferred choice. Possible interferences due to ²⁴¹Am and ²³⁷U and corrective measures are discussed in 6.1.4.

10.4 Select counting time to acquire data necessary to achieve the desired statistical counting precision.

10.5 Position and attenuate the transmission source and count rate correction source to provide count rates with random uncertainty that will not contribute significantly to the overall assay uncertainty.

11. Procedure

11.1 Initial Setup:

11.1.1 Determine the count rate in the peak of the count rate correction source with no other gamma-ray sources present and record along with date of measurement.

11.1.2 Determine the count rate of the transmission source gamma ray peak(s) with no samplesolution container in the