

# DRAFT INTERNATIONAL STANDARD

## ISO/DIS 22496

ISO/TC 162

Secretariat: JISC

Voting begins on:  
2020-04-02

Voting terminates on:  
2020-06-25

---

---

## Windows and pedestrian doors — Terminology

ICS: 01.040.91; 91.060.50

### iTeh STANDARD PREVIEW (standards.iteh.ai)

[ISO/DIS 22496](#)

<https://standards.iteh.ai/catalog/standards/sist/cae7f4f3-8b51-4098-b8df-6f1b720bfl77/iso-dis-22496>

THIS DOCUMENT IS A DRAFT CIRCULATED FOR COMMENT AND APPROVAL. IT IS THEREFORE SUBJECT TO CHANGE AND MAY NOT BE REFERRED TO AS AN INTERNATIONAL STANDARD UNTIL PUBLISHED AS SUCH.

IN ADDITION TO THEIR EVALUATION AS BEING ACCEPTABLE FOR INDUSTRIAL, TECHNOLOGICAL, COMMERCIAL AND USER PURPOSES, DRAFT INTERNATIONAL STANDARDS MAY ON OCCASION HAVE TO BE CONSIDERED IN THE LIGHT OF THEIR POTENTIAL TO BECOME STANDARDS TO WHICH REFERENCE MAY BE MADE IN NATIONAL REGULATIONS.

RECIPIENTS OF THIS DRAFT ARE INVITED TO SUBMIT, WITH THEIR COMMENTS, NOTIFICATION OF ANY RELEVANT PATENT RIGHTS OF WHICH THEY ARE AWARE AND TO PROVIDE SUPPORTING DOCUMENTATION.

This document is circulated as received from the committee secretariat.



Reference number  
ISO/DIS 22496:2020(E)

© ISO 2020

**iTeh STANDARD PREVIEW**  
**(standards.iteh.ai)**

ISO/DIS 22496

<https://standards.iteh.ai/catalog/standards/sist/cae7f4f3-8b51-4098-b8df-6f1b720bfl77/iso-dis-22496>



**COPYRIGHT PROTECTED DOCUMENT**

© ISO 2020

All rights reserved. Unless otherwise specified, or required in the context of its implementation, no part of this publication may be reproduced or utilized otherwise in any form or by any means, electronic or mechanical, including photocopying, or posting on the internet or an intranet, without prior written permission. Permission can be requested from either ISO at the address below or ISO's member body in the country of the requester.

ISO copyright office  
CP 401 • Ch. de Blandonnet 8  
CH-1214 Vernier, Geneva  
Phone: +41 22 749 01 11  
Fax: +41 22 749 09 47  
Email: [copyright@iso.org](mailto:copyright@iso.org)  
Website: [www.iso.org](http://www.iso.org)

Published in Switzerland

## Contents

Foreword.....	iv
1 Scope .....	1
2 Normative references.....	1
3 Terminology for Windows.....	1
4 Terminology for pedestrian doors.....	11
Annex A (informative) Figures for Windows .....	22
Annex B (informative) Figures for pedestrian doors .....	37
Bibliography .....	39

## iTeh STANDARD PREVIEW (standards.iteh.ai)

[ISO/DIS 22496](https://standards.iteh.ai/catalog/standards/sist/cae7f4f3-8b51-4098-b8df-6fb720bfl77/iso-dis-22496)

<https://standards.iteh.ai/catalog/standards/sist/cae7f4f3-8b51-4098-b8df-6fb720bfl77/iso-dis-22496>

## Foreword

ISO (the International Organization for Standardization) is a worldwide federation of national standards bodies (ISO member bodies). The work of preparing International Standards is normally carried out through ISO technical committees. Each member body interested in a subject for which a technical committee has been established has the right to be represented on that committee. International organizations, governmental and non-governmental, in liaison with ISO, also take part in the work. ISO collaborates closely with the International Electrotechnical Commission (IEC) on all matters of electrotechnical standardization.

The procedures used to develop this document and those intended for its further maintenance are described in the ISO/IEC Directives, Part 1. In particular, the different approval criteria needed for the different types of ISO documents should be noted. This document was drafted in accordance with the editorial rules of the ISO/IEC Directives, Part 2 (see [www.iso.org/directives](http://www.iso.org/directives)).

Attention is drawn to the possibility that some of the elements of this document may be the subject of patent rights. ISO shall not be held responsible for identifying any or all such patent rights. Details of any patent rights identified during the development of the document will be in the Introduction and/or on the ISO list of patent declarations received (see [www.iso.org/patents](http://www.iso.org/patents)).

Any trade name used in this document is information given for the convenience of users and does not constitute an endorsement.

For an explanation of the voluntary nature of standards, the meaning of ISO specific terms and expressions related to conformity assessment, as well as information about ISO's adherence to the World Trade Organization (WTO) principles in the Technical Barriers to Trade (TBT), see [www.iso.org/iso/foreword.html](http://www.iso.org/iso/foreword.html).

This document was prepared by Technical Committee ISO/TC 162 *Doors, windows and curtain walling*.

Any feedback or questions on this document should be directed to the user's national standards body. A complete listing of these bodies can be found at [www.iso.org/members.html](http://www.iso.org/members.html).

# Doors, windows and curtain walling — Windows and pedestrian doors — Terminology

## 1 Scope

This document specifies general terminology for windows and pedestrian doors. The various terms are illustrated with the aid of figures.

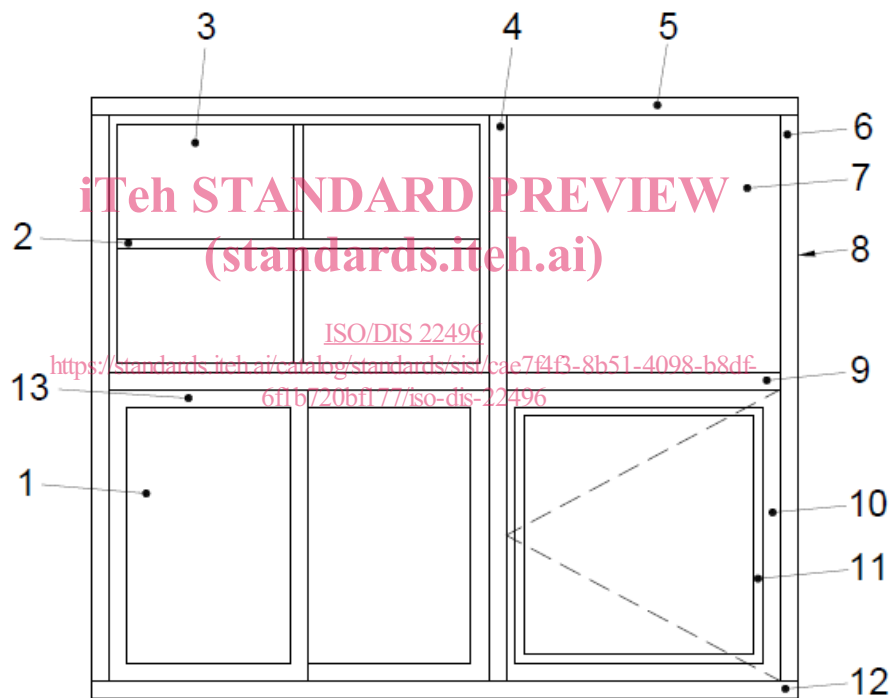
## 2 Normative references

There are no normative references in this document.

## 3 Terminology for Windows

ISO and IEC maintain terminological databases for use in standardization at the following addresses:

- ISO Online browsing platform: available at <https://www.iso.org/obp>
- IEC Electropedia: available at <http://www.electropedia.org/>



### Key

- 1 sash
- 2 glazing bar
- 3 fixed window
- 4 mullion
- 5 head
- 6 frame
- 7 fixed light
- 8 jamb
- 9 transom
- 10 casement
- 11 glazing bead
- 12 sill
- 13 top rail

**Figure 1**

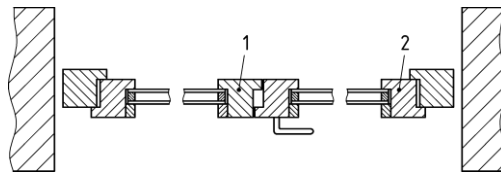
Note 1 to entry: See Annex A for opening functions of windows.

**3.1**

**active sash/active casement**

sash/casement of a multi-light window, intended to be moved first to provide opening

Note 1 to entry: See Figure 2.



**Key**

- 1 passive casement
- 2 active casement

**Figure 2 active sash/active casement**

**3.2**

**bottom rail**

horizontal component at the bottom of a sash/ casement

**3.3**

**bonded glazing**

type of window where the glass is primarily retained by a perimeter sealant and maybe with a supplementary mechanical restraint

iTeh STANDARD PREVIEW  
(standards.iteh.ai)

**3.4**

**casement**

opening element of a hinged or pivoted window

ISO/DIS 22496

Note 1 to entry: See Figure 2. See also Annex A for opening functions of windows

<https://standards.iteh.ai/catalog/standards/iso-dis/22496-001-w98-b8df-6f1b720b177/iso-dis-22496>

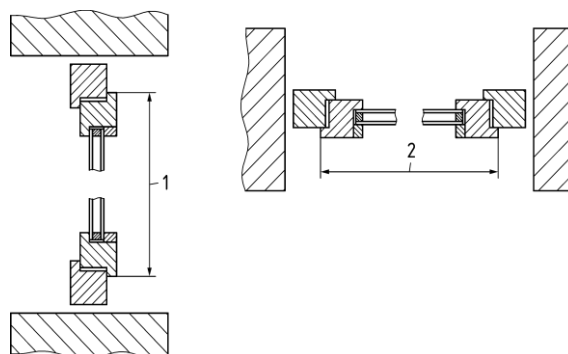
**3.5**

**casement window**

building component for closing an opening in a wall or roof with a hinged or pivoted opening element that may admit light and/or provide ventilation

**3.6**

**casement or sash height/width**

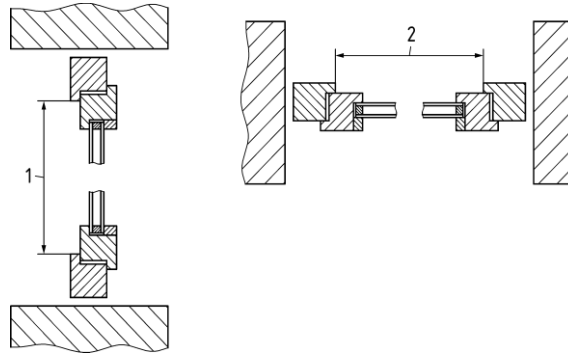


**Key**

- 1 overall casement or sash height
- 2 overall casement or sash width

**Figure 3 casement or sash height/width**

### 3.7 clear opening height/width



#### Key

- 1 clear opening height
- 2 clear opening width

**Figure 4 clear opening height/width**

Note 1 to entry: Certain types of hardware can protrude into the clear opening height.

### 3.8 closed

where the movable parts rest in or at the fixed part in a way in which they may be fastened (latched and/or locked)

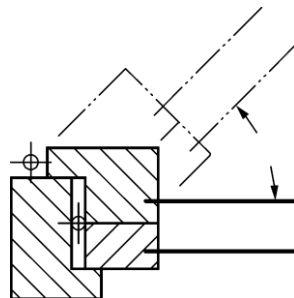
### 3.9 coupled window

window where casements in at least two levels are operated by one action, but can be disconnected for specific purposes such as maintenance or cleaning

iTeh STANDARD PREVIEW  
(standards.iteh.ai)

[ISO/DIS 22496](https://standards.iteh.ai/catalog/standards/sist/cae7f4f3-8b51-4098-b8df-6fb720b177/iso-dis-22496)

Note 1 to entry: See Figure 5.  
<https://standards.iteh.ai/catalog/standards/sist/cae7f4f3-8b51-4098-b8df-6fb720b177/iso-dis-22496>



**Figure 5 coupled window**

### 3.10 daylight opening width/height

any area in the building envelope that is capable of admitting daylight to an interior

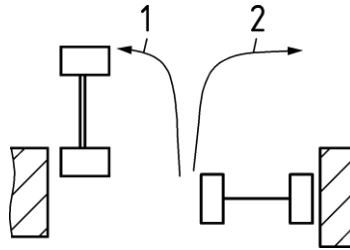
**3.11****direct glazing**

glazing sealed to a casement frame which, when the casement is closed, is linearly mounted on at least two edges

Note 1 to entry: See A.3

**3.12****direction of rotation**

the movement of a hinged or pivoted casement window around its fixing, either clockwise or counter-clockwise

**Key**

- 1 direction of rotation – counter-clockwise
- 2 direction of rotation – clockwise

**Figure 6 direction of rotation**

**iTeh STANDARD PREVIEW**  
(standards.iteh.ai)

**3.13**

**door height window**  
**french window**  
**casement door**

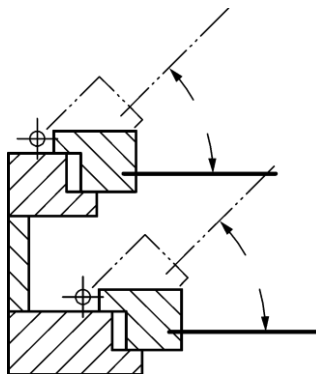
window which extends to floor level and allows access or passage for persons

ISO/DIS 22496

<http://standards.iteh.ai/catalog/standards/sist/ac-7819-051-4088-18df-6f1b720b177/iso-dis-22496>

**3.14****double window**

window with casements in at least two layers that operate independently

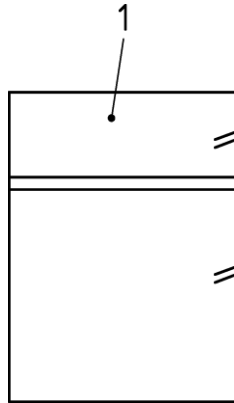


**Figure 7 double window**



**3.15****fanlight**

infill panel of glass or translucent material fitted within a window frame, above the moving sash(es)/casement(s) and with a solid member (transom) between it and the moving part(s)

**Key**

1 fanlight

**Figure 8 fanlight**

**3.16****fastened**

where the movable part is restrained at one or more points

iTeh STANDARD PREVIEW  
(standards.iteh.ai)

**3.17****fixed light**

window with infill fitted directly into the frame

ISO/DIS 22496

<https://standards.iteh.ai/catalog/standards/sist/cae7f4b3-8b51-4098-b8df-6f1b738bf177/iso-dis-22496>

Note 1 to entry: See Figure 1 and Figure A.1a.

Note 2 to entry: in some countries the term fixed light is used for fixed window

**3.18****fixed window**

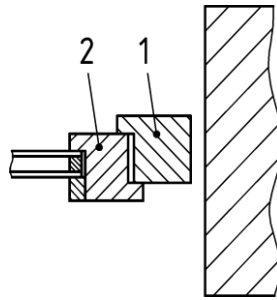
window with infill mounted in a sash or casement construction but which differs from an openable window only in that the hardware used does not permit the sash/casement to be opened on a regular basis but holds the sash/casement to the frame

Note 1 to entry: A fixed window contains all the gaskets that an openable window does and these can be replaced by dismantling the sash or casement from the frame.

Note 2 to entry: See Figure 1 and Figure A.1b.

### 3.19 frame

component forming the perimeter of a window, enabling it to be fixed to the building structure



#### Key

- 1 frame
- 2 casement or sash

Figure 9 frame

### 3.20 glazing

transparent or translucent infill, together with all the components required to hold it within a frame

### 3.21 glazing bar

member subdividing the glazed area into smaller panes, either physically (Georgian bar) or visually (cross- or attached bar)

Note 1 to entry: See A.2 for different types of glazing bar.

### 3.22 glazing bead

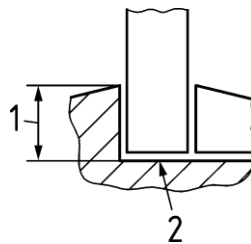
section retaining infill within its frame

ISO/DIS 22496

<https://standards.iteh.ai/catalog/standards/sist/cae7f4f3-8b51-4098-b8df-6f1b720b1f77/iso-dis-22496>

Note 1 to entry: Term “glazing stop” is also used in some countries when the infill is glass

### 3.23 glazing rebate platform



#### Key

- 1 glazing rebate upstand
- 2 glazing rebate platform

Figure 10 glazing rebate platform

Note 1 to entry: See also EN 12488.

**3.24**  
**glazing rebate upstand**

see Figure 10

**3.25**  
**head**

the top horizontal member of a window frame

Note 1 to entry: See Figure 1.

**3.26**  
**infill**

panel of transparent or opaque material or combination of materials

**3.27**  
**interlocking stile**

a stile that is one of a pair of stiles that are designed to engage with each other in the closed position for sliding products

**3.28**  
**jamb**

a vertical side member of a window frame

**3.29**  
**latched**

movable part is returned to its closed position and restrained by either a) a self-engaging fastener or b) a roller catch or c) a latch

iTeh STANDARD PREVIEW  
(standards.iteh.ai)

Note 1 to entry: Latched is one of the fastened closing conditions (see 3.16).

<https://standards.iteh.ai/catalog/standards/sist/cae7f4f3-8b51-4098-b8df-6f1b720bfl77/iso-dis-22496>

**3.30**  
**locked**

movable part is further restrained in the closed position by additional operations (of e.g. handle, key, automatic devices or electronic devices) to engage integrated locking devices (e.g. nutbolts or deadbolts) which will affect the product's characteristics

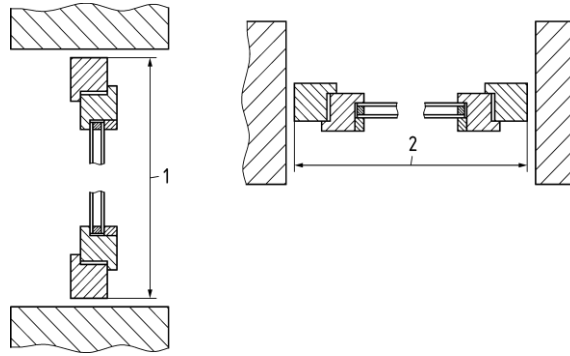
Note 1 to entry: Locked is one of the fastened closing conditions (see 3.16).

**3.31**  
**mullion**

vertical or inclined component which subdivides a frame into sashes/casements or connects two frames

Note 1 to entry: See Figure 1.

### 3.32 overall frame width/height



#### Key

- 1 overall frame height
- 2 overall frame width

**Figure 11 overall frame width/height**

### 3.33 passive sash passive casement

sash/casement of a multi-light window, intend to be moved after the active sash/casement

Note 1 to entry: See Figure 2;

**STANDARD PREVIEW**  
(standards.iteh.ai)

### 3.34 pivot window

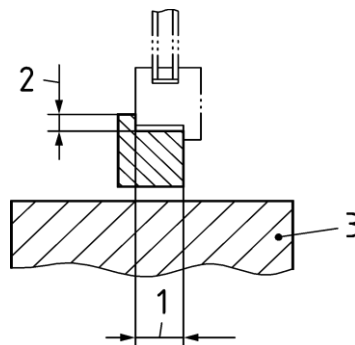
window that opens by pivoting either horizontally or vertically

<https://standards.iteh.ai/catalog/standards/sist/cae7f4b3-8b51-4098-b8df-69b720bf177/iso-dis-22496>

Note 1 to entry: See A.1.2 for different types of pivot window.

### 3.35 rebate

recess in a frame, into which a moving element fits



#### Key

- 1 rebate "r"
- 2 rebate "R"
- 3 wall

**Figure 12 rebate**

Note 1 to entry: A rebate has two measurements, "r" the width of the rebate measured in the same plane as the width of the casement and "R" the depth of the rebate measured in the same plane as the thickness of the moving element.

Note 2 to entry: See B.2 for examples of different types of rebate.

**3.36****ribbon window**

two or more windows which are attached to each other (either horizontally or vertically) without supporting structure between them

**3.37****roof window****skylight**

window intended for installation in a roof. Roof windows/ Skylights have the same characteristics as windows installed in walls with regard to function, cleaning, maintenance and durability

**3.38****sash**

opening element of a sliding window

**3.39****screen**

assembly of two or more windows and/or doorsets in one plane, with or without separate frames

**3.40****secured**

any action(s) which prevent unauthorised release of the fastening device(s) to allow exit or entry (e.g. child safety, burglary)

**3.41****sill**

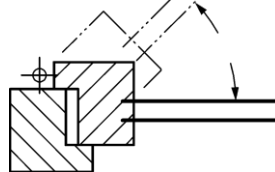
bottom member of a window frame

iTeh STANDARD PREVIEW  
(standards.iteh.ai)

**3.42****single window**

window with casement or sash in only one layer

ISO/DIS 22496  
http://standards.iteh.ai/catalog/standards/sist/cae7f4b3-8b51-4098-b8df-6f1b720b177/iso-dis-22496

**Key**

- 1 sash/casement
- 2 frame

**Figure 13 single window**

**3.43****sliding window**

window with one or more sashes where at least one slides either horizontally or vertically

**3.44****stile**

A vertical edge member of a sash/ casement.

**3.45****top rail**

uppermost horizontal member of a sash/casement

Note 1 to entry: See Figure 1.