

---

---

**Geotechnical investigation and  
testing — Field testing —**

**Part 9:  
Field vane test (FVT and FVT-F)**

*Reconnaissance et essais géotechniques — Essais en place —*

*Partie 9: Essai au scissomètre de chantier*

*iteh Standards*  
*(<https://standards.iteh.ai>)*  
*Document Preview*

ISO 22476-9:2020

<https://standards.iteh.ai/catalog/standards/iso/032b342b-e155-43e3-a3a4-6d667fe3a6db/iso-22476-9-2020>



Reference number  
ISO 22476-9:2020(E)

© ISO 2020

iTeh Standards  
(<https://standards.iteh.ai>)  
Document Preview

ISO 22476-9:2020

<https://standards.iteh.ai/catalog/standards/iso/032b342b-e155-43e3-a3a4-6d667fe3a6db/iso-22476-9-2020>



**COPYRIGHT PROTECTED DOCUMENT**

© ISO 2020

All rights reserved. Unless otherwise specified, or required in the context of its implementation, no part of this publication may be reproduced or utilized otherwise in any form or by any means, electronic or mechanical, including photocopying, or posting on the internet or an intranet, without prior written permission. Permission can be requested from either ISO at the address below or ISO's member body in the country of the requester.

ISO copyright office  
CP 401 • Ch. de Blandonnet 8  
CH-1214 Vernier, Geneva  
Phone: +41 22 749 01 11  
Email: [copyright@iso.org](mailto:copyright@iso.org)  
Website: [www.iso.org](http://www.iso.org)

Published in Switzerland

# Contents

Page

<b>Foreword</b>	<b>v</b>
<b>Introduction</b>	<b>vi</b>
<b>1 Scope</b>	<b>1</b>
<b>2 Normative references</b>	<b>1</b>
<b>3 Terms, definitions and symbols</b>	<b>1</b>
3.1 Terms and definitions	1
3.2 Symbols	4
<b>4 Equipment and configurations</b>	<b>6</b>
4.1 Test equipment	6
4.1.1 Vane and vane shaft	6
4.1.2 Friction reducer	7
4.1.3 Slip coupling	7
4.1.4 Extension rods, protective casings, protection shoe	7
4.1.5 Rotation unit	8
4.1.6 Equipment for measuring rotation and torque	8
4.2 Test configurations	8
<b>5 Selection of equipment and test configuration</b>	<b>10</b>
5.1 Selection of equipment	10
5.2 Selection of test configuration	11
<b>6 Test procedure</b>	<b>12</b>
6.1 Equipment checks and calibrations	12
6.2 Position and inclination of thrust machine	12
6.3 Test depths	12
6.4 Internal friction torque reading prior to testing	12
6.5 Methods for reaching the level for insertion of the vane	12
6.6 Insertion of the vane	14
6.7 External friction torque reading	15
6.8 Vane shear test	15
6.9 Internal friction torque reading after the test	16
<b>7 Test results</b>	<b>16</b>
<b>8 Reporting</b>	<b>17</b>
8.1 General	17
8.2 Reporting of test results	17
8.2.1 General information	17
8.2.2 Location of the test	18
8.2.3 Test equipment	18
8.2.4 Test procedure	18
8.2.5 Test results	19
8.3 Presentation of test plots	19
<b>Annex A (informative) Test phases</b>	<b>20</b>
<b>Annex B (informative) Example of field report for field vane test</b>	<b>21</b>
<b>Annex C (normative) Maintenance, checks and calibration</b>	<b>23</b>
<b>Annex D (informative) Uncertainties in field vane testing</b>	<b>26</b>
<b>Annex E (normative) General interpretation and explanation for tapered and rectangular vanes with <math>H/D</math> ratios differing from 2</b>	<b>28</b>
<b>Annex F (informative) Interpretation and explanation for a rectangular vane with rounded corners</b>	<b>31</b>
<b>Annex G (informative) Calculation of test depth corrected for inclination</b>	<b>33</b>

<b>Annex H (informative) Example of estimation of post-peak behaviour .....</b>	<b>34</b>
<b>Bibliography .....</b>	<b>35</b>

**iTeh Standards**  
**(<https://standards.itih.ai>)**  
**Document Preview**

[ISO 22476-9:2020](https://standards.itih.ai/catalog/standards/iso/032b342b-e155-43e3-a3a4-6d667fe3a6db/iso-22476-9-2020)

<https://standards.itih.ai/catalog/standards/iso/032b342b-e155-43e3-a3a4-6d667fe3a6db/iso-22476-9-2020>

## Foreword

ISO (the International Organization for Standardization) is a worldwide federation of national standards bodies (ISO member bodies). The work of preparing International Standards is normally carried out through ISO technical committees. Each member body interested in a subject for which a technical committee has been established has the right to be represented on that committee. International organizations, governmental and non-governmental, in liaison with ISO, also take part in the work. ISO collaborates closely with the International Electrotechnical Commission (IEC) on all matters of electrotechnical standardization.

The procedures used to develop this document and those intended for its further maintenance are described in the ISO/IEC Directives, Part 1. In particular, the different approval criteria needed for the different types of ISO documents should be noted. This document was drafted in accordance with the editorial rules of the ISO/IEC Directives, Part 2 (see [www.iso.org/directives](http://www.iso.org/directives)).

Attention is drawn to the possibility that some of the elements of this document may be the subject of patent rights. ISO shall not be held responsible for identifying any or all such patent rights. Details of any patent rights identified during the development of the document will be in the Introduction and/or on the ISO list of patent declarations received (see [www.iso.org/patents](http://www.iso.org/patents)).

Any trade name used in this document is information given for the convenience of users and does not constitute an endorsement.

For an explanation of the voluntary nature of standards, the meaning of ISO specific terms and expressions related to conformity assessment, as well as information about ISO's adherence to the World Trade Organization (WTO) principles in the Technical Barriers to Trade (TBT), see [www.iso.org/iso/foreword.html](http://www.iso.org/iso/foreword.html).

This document was prepared by Technical Committee ISO/TC 182, *Geotechnics*, in collaboration with the European Committee for Standardization (CEN) Technical Committee CEN/TC 341, *Geotechnical Investigation and Testing*, in accordance with the Agreement on technical cooperation between ISO and CEN (Vienna Agreement).

A list of all parts in the ISO 22476 series can be found on the ISO website.

Any feedback or questions on this document should be directed to the user's national standards body. A complete listing of these bodies can be found at [www.iso.org/members.html](http://www.iso.org/members.html).

## Introduction

The field vane test is used to determine the vane shear strength of soils in the undrained condition, by insertion of a rectangular vane into fine-grained soil and rotating it. During the rotation, the torque and rotation can be measured, depending on the test configuration. From the measured torque and the dimensions of the vane, the peak shear strength, an indication of post-peak behaviour, and the remoulded shear strength can be derived by a limit equilibrium analysis. Soil sensitivity can be ascertained if peak and remoulded shear strengths have been determined.

The tests are carried out in boreholes, in trial pits and with pushed-in equipment. The torque and rotation are measured either above the ground surface using extension rods, or directly above the vane.

The field vane test is mainly applicable to saturated fine-grained soil. The vane shear strength determined by the test is commonly corrected before geotechnical analysis, using factors based on local experience.

iTeh Standards  
(<https://standards.iteh.ai>)  
Document Preview

[ISO 22476-9:2020](https://standards.iteh.ai/catalog/standards/iso/032b342b-e155-43e3-a3a4-6d667fe3a6db/iso-22476-9-2020)

<https://standards.iteh.ai/catalog/standards/iso/032b342b-e155-43e3-a3a4-6d667fe3a6db/iso-22476-9-2020>

# Geotechnical investigation and testing — Field testing —

## Part 9: Field vane test (FVT and FVT-F)

### 1 Scope

This document deals with the equipment requirements, execution and reporting of field vane tests for the measurement of peak and remoulded vane shear strength together with the sensitivity of fine-grained soils. In addition, post-peak shear strength behaviour can be evaluated. Two types of field vane test are described: the ordinary field vane test (FVT) and the fast field vane test (FVT-F).

The uncertainties of the vane test result are described in [Annex D](#).

NOTE 1 This document fulfils the requirements for field vane tests as part of the geotechnical investigation and testing according to EN 1997-1 and EN 1997-2.

NOTE 2 This document covers onshore and nearshore field vane testing.

### 2 Normative references

The following documents are referred to in the text in such a way that some or all of their content constitutes requirements of this document. For dated references, only the edition cited applies. For undated references, the latest edition of the referenced document (including any amendments) applies.

ISO 10012, *Measurement management systems — Requirements for measurement processes and measuring equipment*

[ISO 22476-9:2020](#)

<https://standards.iteh.ai/catalog/standards/iso/032b342b-e155-43e3-a3a4-6d667fe3a6db/iso-22476-9-2020>

### 3 Terms, definitions and symbols

#### 3.1 Terms and definitions

For the purposes of this document, the following terms and definitions apply.

ISO and IEC maintain terminological databases for use in standardization at the following addresses:

- ISO Online browsing platform: available at <https://www.iso.org/obp>
- IEC Electropedia: available at <http://www.electropedia.org/>

##### 3.1.1

##### **cased extension rod**

extension rod that is sleeved inside of *protective casings* ([3.1.11](#)) during *vane* ([3.1.23](#)) testing

##### 3.1.2

##### **cased borehole**

borehole that is cased to prevent collapse and minimize friction between the extension rods and soil

##### 3.1.3

##### **centralizer**

equipment to keep the extension rods straight and prevent buckling

### 3.1.4

#### **data acquisition system**

measuring system, which converts physical quantities to digital format

Note 1 to entry: The system typically includes sensors, signal conditioning, an analogue-to-digital converter and recording unit.

### 3.1.5

#### **downhole test**

test configuration whereby the torque is measured close to the *vane* (3.1.23)

Note 1 to entry: The *rotation* (3.1.14) can be measured close to the vane or above the ground surface.

### 3.1.6

#### **external friction torque**

torque due to friction outside the measuring equipment during *rotation* (3.1.14) excluding torque caused by shearing of soil

Note 1 to entry: External friction is mainly caused by friction acting on extension rods, and it can be estimated with a *slip coupling* (3.1.16) immediately before engagement of the *vane* (3.1.23).

### 3.1.7

#### **friction reducer**

ring inserted between the *vane* (3.1.23) and the extension rods to reduce friction along *uncased extension rods* (3.1.20)

### 3.1.8

#### **insertion length**

distance from the ground surface or base of (bore)hole or trial pit to mid-height of the *vane* (3.1.23), measured along the axis of the extension rods

### 3.1.9

#### **internal friction torque**

torque due to friction inside the measuring equipment during *rotation* (3.1.14) when there is no torque acting on the *vane* (3.1.23) and no friction acting on the extension rods

### 3.1.10

#### **protection shoe**

equipment to protect the *vane* (3.1.23) while pushing into the soil

Note 1 to entry: It assists with the insertion of the vane without drilling. Usually, the tip of the protection shoe consists of four plate slots allowing the *vane plates* (3.1.24) to retract inside of the *protective casing* (3.1.11).

### 3.1.11

#### **protective casing**

tube that isolates the extension rods from the soil and gives support against buckling

### 3.1.12

#### **protrusion length**

distance between the bottom of the protective casing/shoe and the mid-height of the *vane* (3.1.23) when pushed to the *test depth* (3.1.17), measured along the axis of the rods

### 3.1.13

#### **push-in equipment**

equipment to push the *vane* (3.1.23) into the soil without predrilling.

### 3.1.14

#### **rotation**

change of angle by the circular movement of the *vane* (3.1.23) around its axis

Note 1 to entry: Apparent rotation is the rotation recorded by the rotation measurement equipment.



**3.1.15****rotation rate**

rate of angular *rotation* (3.1.14) of the *vane* (3.1.23)

**3.1.16****slip coupling**

mechanism that allows the extension rods to rotate freely while the *vane* (3.1.23) remains stationary

Note 1 to entry: The function of slip coupling is to separate the rod friction from vane torque resistance. A slip coupling mechanism shall provide free rotation with minimal friction.

**3.1.17****test depth**

vertical distance from the ground surface, reference level or datum to the mid-height of the *vane* (3.1.23)

Note 1 to entry: According to [Annex G](#), the *insertion length* (3.1.8) can be corrected with inclinometer measurements to correspond to the corrected test depth. Otherwise, the test depth is based on the sum of the lengths of the extension rods from reference level or datum owing to the uncertainty of inclination.

**3.1.18****test location**

plan position of a test or series of tests

**3.1.19****time to failure**

time from the beginning of application of torque to the *vane* (3.1.23) until the maximum torque is reached

**3.1.20****uncased extension rod**

extension rod that is not protected by protective casing allowing friction to develop between the extension rods and the soil

**3.1.21****uncased vane**

*vane* (3.1.23) pushed into the ground without protection

**3.1.22****uphole test**

test configuration whereby the torque is measured above the ground surface

Note 1 to entry: The *rotation* (3.1.14) is applied and measurements registered above the ground surface.

**3.1.23****vane**

device formed by four *vane plates* (3.1.24) fixed at 90° to each other

**3.1.24****vane plate**

thin and flat rectangular plate

Note 1 to entry: Most *vaness* (3.1.23) have a (nearly) rectangular shape. For practical reasons, vanes without *protection shoes* (3.1.10) often have slightly tapered lower ends of the vane plates or with rounded corners. Some equipment using *uncased extension rods* (3.1.20) and a *slip coupling* (3.1.16) to separate the rod friction from the torque on the vane are designed with slightly tapered, sharpened, pointed or conical, vane plates in order to disengage the slip coupling during the pushing stroke.

**3.1.25****vane shaft**

cylindrical element of the *vane* (3.1.23) to which the *vane plates* (3.1.24) are fixed

Note 1 to entry: The vane shaft may be connected directly to the force or torque measurement equipment in a *downhole test* (3.1.5) or connected to it via extension rods in an *uphole test* (3.1.22).

**3.1.26****waiting time**

time between reaching the *test depth* (3.1.17) and beginning of application of the torque to the vane

**3.1.27****zero shift**

difference between the *internal friction torque* (3.1.9) readings of the measuring equipment prior to and after completion of the test

**3.1.28****sensitivity**

ratio between the undisturbed and remoulded undrained shear strengths

**3.2 Symbols**

Symbol	Name	Description	Unit
$A_{\text{cone,bott}}$		Lateral shear surface area of the bottom cone	mm <sup>2</sup>
$A_{\text{cone,top}}$		Lateral shear surface area of the top cone	mm <sup>2</sup>
$A_{\text{cylinder}}$		Lateral shear surface area of the cylinder	mm <sup>2</sup>
$\alpha$		Measured total angle between the vertical axis and the axis of the vane	°
$\beta_1$		Measured angle between the vertical axis and the projection of the axis of the field vane on a fixed vertical plane	°
$\beta_2$		Measured angle between the vertical axis and the projection of the axis of the field vane on a vertical plane that is perpendicular to the plane of angle $\beta_1$	°
C	Protective casing	Defined by term 3.1.11	
$c_u$	Undrained shear strength	Shear resistance of fine-grained soils in the undrained condition	kPa
$c_{fv}$	Field vane strength	Peak shear strength of soil, derived from the maximum torque measured by field vane test	kPa
$c_{fv-f}$	Fast field vane strength	Peak shear strength of soil, derived from the maximum torque measured by fast field vane test	kPa
$c_{pv}$	Post-peak field vane strength	Post-peak shear strength of soil, selected after desired rotation after field vane strength	kPa
$c_{rv}$	Remoulded field vane strength	Shear strength, as measured by field vane test, after remoulding the soil	kPa
D	Downhole measuring equipment	Equipment for measuring torque and rotation are located close to the vane	
D*	Downhole measuring equipment	Equipment for measuring torque is located close to the vane, but equipment for measuring rotation is located above the ground surface	
$D$		Diameter of the vane	mm
$d$		Diameter of vane shaft immediately behind vane	mm
$D_c$		Diameter of lower end of protective casing	mm
$D_{ps}$		Diameter of protection shoe	mm
F	Friction reducer	Defined by term 3.1.7	
$H$		Height of the vane	mm
$H_T$		The height of the vertical side of the tapered vane excluding the height influence of tapering(s).	mm
$i_T$		Angle of the taper at vane top	°
$i_B$		Angle of the taper at vane bottom	°

Symbol	Name	Description	Unit
R	Rotation unit	Rotation unit can be located close to the vane or above the ground surface	
$R_a$	Area ratio	Cross-sectional area ratio of vane and vane shaft compared to circular shear surface	—
$r$		Radius of the rounded corner of the vane plate	mm
$r_{\text{cone,bott}}$		Lever arm of the lateral surface of the bottom cone of shear surface	mm
$r_{\text{cone,top}}$		Lever arm of the lateral surface of the top cone	mm
$r_{\text{cylinder}}$		Lever arm of the lateral surface of the cylinder	mm
S	Slip coupling	Defined by term 3.1.16	
$s_{\text{fv}}$	Field vane sensitivity	The ratio between the field vane and remoulded field vane strengths	—
$s$		Thickness of the vane plates	mm
$T$	Torque	Torque measured during vane rotation, corrected for external friction torque reading	Nm
$T_{\text{cone,bott}}$		Component of torque required to shear the bottom cone of the shear surface	Nm
$T_{\text{cone,top}}$		Component of torque required to shear the top cone of the shear surface	Nm
$T_{\text{corner}}$		Component of torque required to shear a quarter circular shear surface	Nm
$T_{\text{cylinder}}$		Component of torque required to shear the side surface of the cylinder	Nm
$T_{\text{ext}}$	External friction torque reading	Stable output of measuring equipment during rotation when there is no torque acting on the vane (usually measured prior to the vane engagement by slip coupling)	Nm
$T_{\text{ext}^*}$	External friction torque reading after remoulding the soil	Stable output of measuring equipment during rotation after remoulding the soil when there is no torque acting on the vane (usually measured prior to the vane engagement by slip coupling)	Nm
$T_{\text{int}}$	Internal friction torque reading prior to test	Stable output of measuring equipment during rotation when there is no torque acting on the vane and no friction acting on the extension rods	Nm
$T_{\text{max}}$	Maximum torque	Torque required to obtain failure in the soil around the vane, corrected for internal and external friction torque reading(s) if relevant	Nm
$T_{\text{meas,max}}$	Maximum measured torque	Measured torque required to obtain failure in the soil around the vane, including external friction. The maximum torque ( $T_{\text{max}}$ ) can be calculated by subtracting $T_{\text{ext}}$ from $T_{\text{meas,max}}$ ( $T_{\text{max}} = T_{\text{meas,max}} - T_{\text{ext}}$ ) otherwise $T_{\text{meas,max}}$ is $T_{\text{max}}$	Nm
$T_{\text{meas,pv}}$	Measured post-peak torque	Measured post-peak torque selected after the desired rotation (post peak strength measurement) including external friction torque. The post-peak torque is calculated by subtracting $T_{\text{ext}}$ from $T_{\text{meas,pv}}$ ( $T_{\text{pv}} = T_{\text{meas,pv}} - T_{\text{ext}}$ ) otherwise $T_{\text{meas,pv}}$ is $T_{\text{pv}}$	Nm
$T_{\text{meas,rv}}$	Measured torque for remoulded conditions	The constant measured torque value after remoulding including external friction torque. The torque for the remoulded condition is calculated by subtracting $T_{\text{ext}}$ from $T_{\text{meas,rv}}$ ( $T_{\text{rv}} = T_{\text{meas,rv}} - T_{\text{ext}}$ ) otherwise $T_{\text{meas,rv}}$ is $T_{\text{rv}}$	Nm
$T_{\text{plate}}$		Torque caused by shearing of circular plate shear surface	Nm
$T_{\text{pv}}$	Post-peak torque	Post-peak torque selected after maximum torque, corrected for internal and external friction torque reading(s) if relevant	Nm
$T_{\text{rv}}$	Torque for remoulded conditions	Measured constant torque value after remoulding the soil, corrected for internal and external friction torque reading(s) if relevant	Nm

Symbol	Name	Description	Unit
$\tau$	Shear stress	Stress acting along the failure surface due to external shear force	kPa
U	Uphole measuring equipment	A continuous torque measuring equipment located above the ground surface at the point for insertion of the vane	
W	Mechanical measuring device	A torque wrench or a dial indicator spring with variable lever arm	
X	Protective casing with protection shoe	Protective casing defined by term <a href="#">3.1.11</a> and accordingly protective shoe by term <a href="#">3.1.10</a>	

## 4 Equipment and configurations

### 4.1 Test equipment

The test equipment shall include a vane and vane shaft, extension rods, rotation unit and a rotation/torque measuring equipment.

Accessories to the test equipment may include:

- a friction reducer;
- a slip coupling;
- a protective casing;
- a protective casing with protection shoe,

which are used to increase the insertion length that can be achieved and will reduce or enable to measure the friction in the system.

#### 4.1.1 Vane and vane shaft

The vane shall consist of four identical vane plates fixed at 90° to each other with a tolerance of  $\pm 1^\circ$ , see [Figure 1](#).

NOTE 1 For practical reasons, uncased vanes can have rounded corners or can be tapered.

The shape should be rectangular with an  $H/D$  ratio of 2.

NOTE 2 An example of a mould to measure and verify the dimensions and  $H/D$  ratio requirements of the vane is given in [Annex C](#).

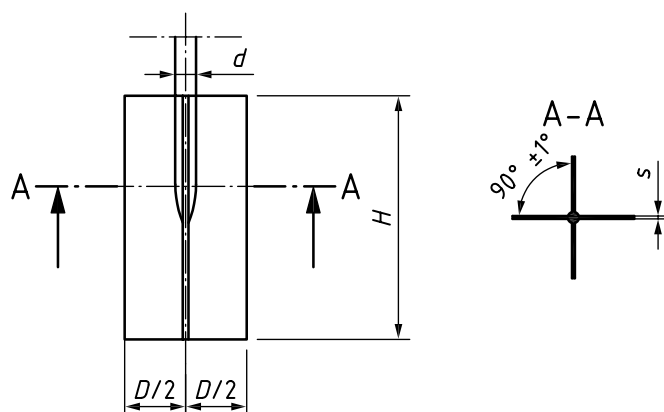


Figure 1 — Principal design of the vane