

# DRAFT INTERNATIONAL STANDARD

## ISO/DIS 22751

ISO/TC 45/SC 4

Secretariat: DSM

Voting begins on:  
2019-08-01

Voting terminates on:  
2019-10-24

---

---

## Rubber or plastic coated fabrics — Physical and mechanical test — Determination of bending force

ICS: 59.080.40

**iTeh STANDARD PREVIEW**  
(standards.iteh.ai)  
Full standard:  
<https://standards.iteh.ai/catalog/standards/sist/4266b55f-0d0c-45ba-9749-35e50c201990/iso-fdis-22751>

THIS DOCUMENT IS A DRAFT CIRCULATED FOR COMMENT AND APPROVAL. IT IS THEREFORE SUBJECT TO CHANGE AND MAY NOT BE REFERRED TO AS AN INTERNATIONAL STANDARD UNTIL PUBLISHED AS SUCH.

IN ADDITION TO THEIR EVALUATION AS BEING ACCEPTABLE FOR INDUSTRIAL, TECHNOLOGICAL, COMMERCIAL AND USER PURPOSES, DRAFT INTERNATIONAL STANDARDS MAY ON OCCASION HAVE TO BE CONSIDERED IN THE LIGHT OF THEIR POTENTIAL TO BECOME STANDARDS TO WHICH REFERENCE MAY BE MADE IN NATIONAL REGULATIONS.

RECIPIENTS OF THIS DRAFT ARE INVITED TO SUBMIT, WITH THEIR COMMENTS, NOTIFICATION OF ANY RELEVANT PATENT RIGHTS OF WHICH THEY ARE AWARE AND TO PROVIDE SUPPORTING DOCUMENTATION.

This document is circulated as received from the committee secretariat.

**ISO/CEN PARALLEL PROCESSING**



Reference number  
ISO/DIS 22751:2019(E)

© ISO 2019

**iTeh STANDARD PREVIEW**  
(standards.iteh.ai)  
Full standard:  
<https://standards.iteh.ai/catalog/standards/sist/4266b55f-0d0c-45ba-9749-35e50c201990/iso-fdis-22751>



**COPYRIGHT PROTECTED DOCUMENT**

© ISO 2019

All rights reserved. Unless otherwise specified, or required in the context of its implementation, no part of this publication may be reproduced or utilized otherwise in any form or by any means, electronic or mechanical, including photocopying, or posting on the internet or an intranet, without prior written permission. Permission can be requested from either ISO at the address below or ISO's member body in the country of the requester.

ISO copyright office  
CP 401 • Ch. de Blandonnet 8  
CH-1214 Vernier, Geneva  
Phone: +41 22 749 01 11  
Fax: +41 22 749 09 47  
Email: [copyright@iso.org](mailto:copyright@iso.org)  
Website: [www.iso.org](http://www.iso.org)

Published in Switzerland

# Contents

	Page
Foreword .....	iv
<b>1 Scope</b> .....	<b>1</b>
<b>2 Normative references</b> .....	<b>1</b>
<b>3 Terms and definitions</b> .....	<b>1</b>
<b>4 Principle</b> .....	<b>2</b>
<b>5 Apparatus</b> .....	<b>2</b>
<b>6 Sampling and sample preparation</b> .....	<b>4</b>
<b>7 Atmosphere for conditioning and testing</b> .....	<b>4</b>
7.1 For conditioning .....	4
7.2 For testing .....	4
<b>8 Test procedure</b> .....	<b>5</b>
8.1 Bending force .....	5
8.1.1 General .....	5
8.1.2 Specimen coated on <u>both</u> sides .....	5
8.1.3 Specimen coated on <u>one</u> sides .....	5
8.2 Thickness .....	5
<b>9 Expression of results</b> .....	<b>5</b>
<b>10 Test report</b> .....	<b>6</b>

iTeh STANDARD PREVIEW  
 (standards.iteh.ai)  
 Full standard:  
<https://standards.iteh.ai/catalog/standards/sist/4266a55f-0d0c-45ba-9749-35e50c201990/iso-dis-22751>

## Foreword

ISO (the International Organization for Standardization) is a worldwide federation of national standards bodies (ISO member bodies). The work of preparing International Standards is normally carried out through ISO technical committees. Each member body interested in a subject for which a technical committee has been established has the right to be represented on that committee. International organizations, governmental and non-governmental, in liaison with ISO, also take part in the work. ISO collaborates closely with the International Electrotechnical Commission (IEC) on all matters of electrotechnical standardization.

The procedures used to develop this document and those intended for its further maintenance are described in the ISO/IEC Directives, Part 1. In particular the different approval criteria needed for the different types of ISO documents should be noted. This document was drafted in accordance with the editorial rules of the ISO/IEC Directives, Part 2 (see [www.iso.org/directives](http://www.iso.org/directives)).

Attention is drawn to the possibility that some of the elements of this document may be the subject of patent rights. ISO shall not be held responsible for identifying any or all such patent rights. Details of any patent rights identified during the development of the document will be in the Introduction and/or on the ISO list of patent declarations received (see [www.iso.org/patents](http://www.iso.org/patents)).

Any trade name used in this document is information given for the convenience of users and does not constitute an endorsement.

For an explanation on the voluntary nature of standards, the meaning of ISO specific terms and expressions related to conformity assessment, as well as information about ISO's adherence to the World Trade Organization (WTO) principles in the Technical Barriers to Trade (TBT) see the following URL: [www.iso.org/iso/foreword.html](http://www.iso.org/iso/foreword.html).

This document was prepared by Technical Committee ISO/TC 45, *Rubber & rubber products* Subcommittee SC 4, *Products (Other than Hoses)*

# Rubber or plastic coated fabrics — Physical and mechanical test — Determination of bending force

## 1 Scope

This document describes a test method for the determination of the bending force of rubber or plastic coated textile.

## 2 Normative references

The following documents are referred to in the text in such a way that some or all of their content constitutes requirements of this document. For dated references, only the edition cited applies. For undated references, the latest edition of the referenced document (including any amendments) applies.

ISO 2231, *Rubber- or plastics-coated fabrics — Standard atmospheres for conditioning and testing*

ISO 2286-3, *Rubber- or plastics-coated fabrics — Determination of roll characteristics — Part 3: Method for determination of thickness*

ISO 7500-1, *Metallic materials — Calibration and verification of static uniaxial testing machines — Part 1: Tension/compression testing machines — Calibration and verification of the force-measuring system*

## 3 Terms and definitions

For the purposes of this document, the following terms and definitions apply.

### 3.1

#### **bending force**

force exerted by the specimen on the measuring bar at a specified bending angle, bending length and bending rate

### 3.2

#### **bending angle**

angle at which the bending force is measured

### 3.3

#### **bending length**

length around which the specimen is bent

Note 1 to entry: Distance between the clamping device of the specimen and the bar onto which the force of the specimen is transferred

### 3.4

#### **bending rate**

rate of bending of the specimen

### 3.5

#### **compression bending**

compression of the coating layer during bending

### 3.6

#### **extension bending**

extension of the coating layer during bending

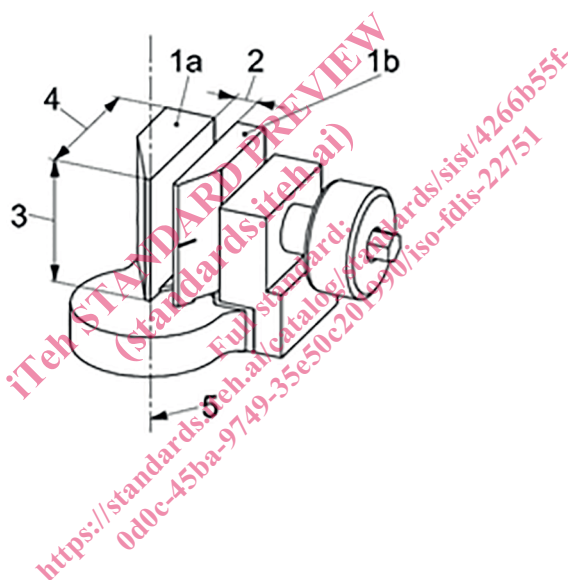
## 4 Principle

The bending force is determined based on the bar method/two-point method. In this method, the specimen is clamped in a rotating fixture. During the rotation, the specimen exerts a force onto a bar. The force acting at a specified bending angle is measured.

## 5 Apparatus

**5.1** Device for determining the bending force according to the bar method (two-point bending method) comprising the following

**5.1.1** A clamping mechanism in which the specimen shall be able to be clamped vertically. The clamping jaws shall have a depth of  $(35 \pm 1)$  mm and a minimum width of at least 30 mm (see [figure 1](#)). The clamping device shall enable parallel clamping with an even pressure distribution on the specimen. It shall move smoothly and allow tightening at known clamping pressure, i.e. by torque wrench or any other adapted method. The clamping device shall allow for affixing the specimen without it touching the bar in its initial position



### Key

- 1a Fixed clamping jaws
- 1b Moving clamping jaws
- 2 Aperture > 6 mm
- 3 Jaw width > 30mm
- 4 Jaw depth  $(35 \pm 1)$  mm
- 5 Pivot axis

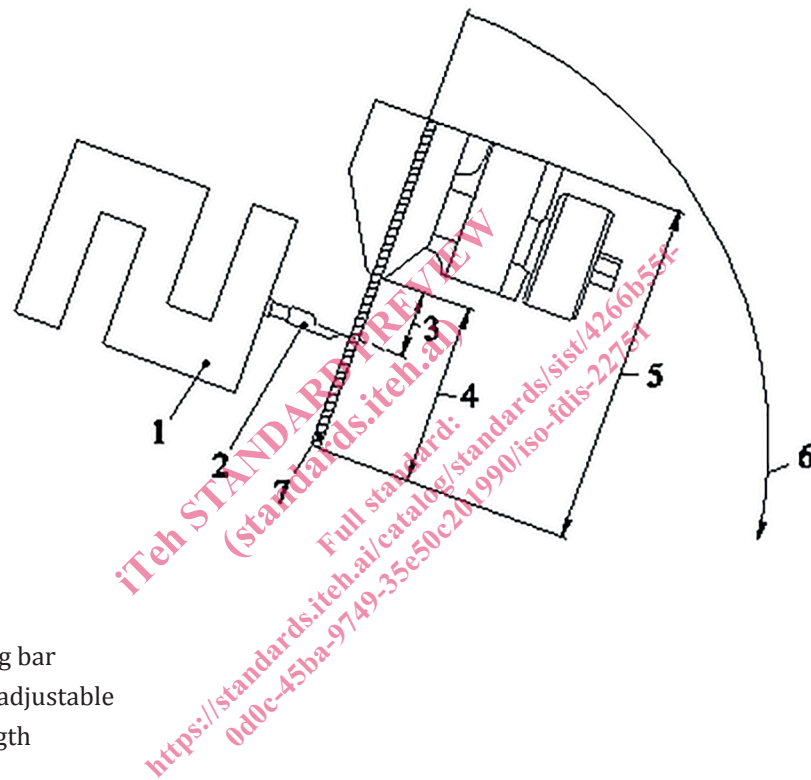
**Figure 1 — Clamping jaws**

**5.1.2** A means of rotating the clamping device about the pivot axis. The pivot axis is located exactly at the front edge of the fixed clamp (deviation of  $\pm 0,1$  mm) (see [Figure 1](#)). Rotation shall be possible within the range of  $1$  to  $91^\circ$  with a maximum deviation of  $1,5\%$ . The rotational speed shall be able to be adjusted up to  $10^\circ/\text{s}$  with an accuracy of  $0,1^\circ/\text{s}$ . At maximum load, the maximum deviation of the rotational speed allowed is  $1\%$ .

**5.1.3** A means of measuring the bending force. The rotation of the specimen causes it to be pressed against a vertical bar. The bar is connected to a load cell that allows measurement of forces up to  $10$  N (optionally,  $1$  N for very flexible materials) with an accuracy as specified by class 2 of ISO 7500-1. The main axis of the load cell shall be aligned horizontally. The bar design shall exhibit a sharp edge ( $R = 0,05$

mm  $\pm 0,01$  mm) and a width of at least 30 mm. The weight of the bar shall not influence the measured value by more than 1 % of its reading.

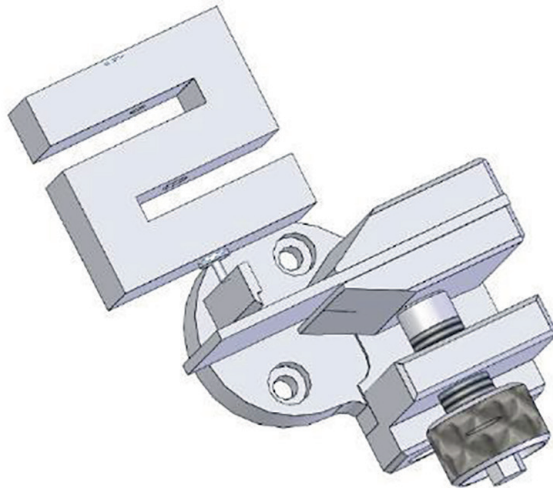
The distance between the bar and the pivot point shall be adjustable in a range from 0,1 mm to 50 mm with an accuracy of at least 0,1 mm. At the start of the measurement, the specimen is moved towards the bar until contact is made and a defined preliminary force is reached. This preliminary force shall be able to be adjusted with an accuracy of at least 1 mN. When the preliminary force is reached, the measurement shall start, i.e., angle =  $0^\circ$  and force = preliminary force setting. The evaluation unit shall ensure measurement of the force at one or more previously defined angles. These angles shall not be identical to the maximum angle of rotation. The measuring apparatus shall ensure that all significant parameters (force, length, speed) can be checked, calibrated and restored. It is recommended that the measured data (raw data and parameter settings) are able to be electronically archived.



**Key**

- 1 Load cell
- 2 Vertical metering bar
- 3 Bending length-adjustable
- 4 Free sample length
- 5 Sample length
- 6 Rotating direction
- 7 Sample

**Figure 2a — Clamping jaws with specimen, load cell and bar with sharp edge**



**Figure 2b — 3 D drawing of clamping jaws with specimen, load cell and bar**

5.2 Torque wrench suitable for a range from 0,05 Nm to 0,2 Nm with an accuracy of 0,01 Nm.

## 6 Sampling and sample preparation

From the product to be tested, take rectangular test specimens either of dimensions taken from the relevant parameter sets, (see [Table 1](#)). Other dimensions are permissible but shall be indicated in the test report. Cut at least three test specimens from the sheet longitudinal to the direction of manufacture and at least another three test specimens perpendicular to the direction of manufacture. If the direction of manufacture is unknown, the directions for cutting should be agreed between the interested parties. Other sampling angles (e.g. diagonal) are also permissible and details shall be given in the test report.

Define and mark clearly the side which extended during the test. This side is pressed by the bar during the test.

If bending tests on both sides are to be conducted on the material an additional three specimens shall be used for each sampling direction.

## 7 Atmosphere for conditioning and testing

### 7.1 For conditioning

The atmosphere shall be the method of conditioning “1” specified in ISO 2231:1989. For fabrics coated on one side only, a minimum of 16 h exposure is recommended. For fabrics coated on both sides, a minimum of 24 h exposure is recommended.

### 7.2 For testing

The atmosphere shall be selected from A through E specified in ISO 2231:1989. If it is necessary to control both temperature and humidity, select the atmosphere from A through C.

NOTE 1 The temperature 23 °C is normally the testing atmosphere in temperate countries and 27 °C is normally in tropical and subtropical countries.



## 8 Test procedure

### 8.1 Bending force

#### 8.1.1 General

Each specimen shall be tested only once and shall then be discarded. The specimen shall be carefully clamped into the test device such that the free-standing part of the specimen corresponds to the clamping length specified in the table. The marked side shall be pressed by the bar during the test. A torque wrench with a setting of 0.08 Nm shall be used to tighten the clamping jaws. Then, the test shall be started with one of the specified parameter sets, given in [table 1](#). If no set is specified, use set A as standard set. The measurement starts at 0° when the specified preliminary force is reached. The measured forces shall be recorded at the required bending angle.

#### 8.1.2 Specimen coated on **both** sides

When the specimen has both side surface coated, indicate clearly which side is pressed by the bar. Both extension and compression bending is possible. For the extension-bending test, the specimen shall be inserted so that the bar presses on the marked side. To make the compression-bending test of the marked side, the specimen shall be inserted so that the bar presses on the non-marked side.

NOTE 2 The coating layers on both sides might consist of the same material and have the same thickness. To get a full set of information it is recommended that extension- and compression-bending tests of the marked side are conducted because in such cases, the results of the tests with extension and compression of the marked side can be different.

#### 8.1.3 Specimen coated on **one** sides

Both extension and compression bending on the coated side is possible. For the extension-bending test, the specimen shall be inserted so that the bar presses on the coated side. To make the compression-bending test, the specimen shall be inserted so that the bar presses on the uncoated side.

**Table 1 — Set of parameters**

	Set of parameter		
	A (Standard)	B	C
bending length [mm]	5	10	15
free sample length [mm]	15	20	25
measurement in bending angle of [°]	60	60	60
bending up to an angle of [°]	63	63	63
bending rate [°/s]	1,5	1,5	1,5
bending rate up to preliminary force [°/s]	1,5	1,5	1,5
dimensions of sample (width x length) [mm]	30 x 50	30 x 55	30 x 60
preliminary force [mN]	3	3	3

### 8.2 Thickness

Measure the total thickness of the material in accordance to ISO 2286-3. The same specimens used for the measurement of flexural properties can be used. In this case, thickness shall be measured after the measurement of flexural properties.

## 9 Expression of results

Unless otherwise specified, express the bending force in mN with three significant digits and calculate the mean value for all sampling directions (using all individual values). For measurements testing