



SLOVENSKI STANDARD
oSIST prEN 17361:2022
01-april-2022

Plovila za celinske vode - Zunanje lestve

Inland navigation vessels - Outboard ladders

Fahrzeuge der Binnenschifffahrt - Außenbordleitern

Bateaux de navigation intérieure - Echelles de bordé

Ta slovenski standard je istoveten z: prEN 17361

iteh STANDARD
PREVIEW
(standards.iteh.ai)

ICS:

47.020.10	Ladijski trupi in njihovi konstrukcijski elementi	Hulls and their structure elements
47.060	Jezerska in rečna plovila	Inland navigation vessels
97.145	Lestve	Ladders

oSIST prEN 17361:2022

en,fr,de

**iTeh STANDARD
PREVIEW
(standards.iteh.ai)**

[oSIST prEN 17361:2022](#)

<https://standards.iteh.ai/catalog/standards/sist/f5ad7df0-f84e-400e-b7aa-ecb6377daa63/osist-pren-17361-2022>

EUROPEAN STANDARD
NORME EUROPÉENNE
EUROPÄISCHE NORM

DRAFT
prEN 17361

February 2022

ICS 47.020.10; 47.060

Will supersede EN 17361:2020

English Version

Inland navigation vessels - Outboard ladders

Bateaux de navigation intérieure - Échelles de bordé

Fahrzeuge der Binnenschifffahrt - Außenbordleitern

This draft European Standard is submitted to CEN members for enquiry. It has been drawn up by the Technical Committee CEN/TC 15.

If this draft becomes a European Standard, CEN members are bound to comply with the CEN/CENELEC Internal Regulations which stipulate the conditions for giving this European Standard the status of a national standard without any alteration.

This draft European Standard was established by CEN in three official versions (English, French, German). A version in any other language made by translation under the responsibility of a CEN member into its own language and notified to the CEN-CENELEC Management Centre has the same status as the official versions.

CEN members are the national standards bodies of Austria, Belgium, Bulgaria, Croatia, Cyprus, Czech Republic, Denmark, Estonia, Finland, France, Germany, Greece, Hungary, Iceland, Ireland, Italy, Latvia, Lithuania, Luxembourg, Malta, Netherlands, Norway, Poland, Portugal, Republic of North Macedonia, Romania, Serbia, Slovakia, Slovenia, Spain, Sweden, Switzerland, Turkey and United Kingdom.

Recipients of this draft are invited to submit, with their comments, notification of any relevant patent rights of which they are aware and to provide supporting documentation.

Warning : This document is not a European Standard. It is distributed for review and comments. It is subject to change without notice and shall not be referred to as a European Standard.



EUROPEAN COMMITTEE FOR STANDARDIZATION
COMITÉ EUROPÉEN DE NORMALISATION
EUROPÄISCHES KOMITEE FÜR NORMUNG

CEN-CENELEC Management Centre: Rue de la Science 23, B-1040 Brussels

Contents	Page
European foreword.....	3
1 Scope	4
2 Normative references	4
3 Terms and definitions	4
4 Safety requirements	5
4.1 Dimensions	5
4.2 Parts	5
4.2.1 General	5
4.2.2 Stringer and handhold	5
4.2.3 Steps	5
4.2.4 Spacers	6
4.2.5 Web	7
4.3 Holder of the outboard ladder	7
4.3.1 General	7
4.3.2 Type A	7
4.3.3 Type B	8
4.4 Adjustable hook (H)	8
4.4.1 Dimensions	8
4.4.2 Fasteners	8
4.5 Assembly	9
4.6 Strength	10
5 Construction	10
5.1 Watertightness	10
5.2 Buoyancy	10
5.3 Safe tread	10
5.4 Mass	10
5.5 Materials	10
6 Testing	11
6.1 General	11
6.2 Test of materials	11
6.3 Strength test	11
6.3.1 Outboard ladder	11
6.3.2 Handhold	11
6.3.3 Adjustable hook	11
6.4 Buoyancy test	11
7 Designation	11
8 Marking	12
Bibliography	13

iTeh STANDARD
PREVIEW
(standards.iteh.ai)

oSIST prEN 17361:2022
<https://standards.iteh.ai/catalog/standards/sist/f5ad7df0-f84e-400e-b7aa-ech6377daa63/osist-pren-17361-2022>

European foreword

This document (prEN 17361:2022) has been prepared by Technical Committee CEN/TC 15 “Inland navigation vessels”, the secretariat of which is held by DIN.

This document is currently submitted to the CEN Enquiry.

This document will supersede EN 17361:2020.

Compared to to EN 17361:2020, the following changes have been made:

- a) subclause 5.1 has been replaced by the Clause “Watertightness”;
- b) subclause 5.4 has been deleted.

**iTeh STANDARD
PREVIEW
(standards.iteh.ai)**

[oSIST prEN 17361:2022](https://standards.iteh.ai/catalog/standards/sist/f5ad7df0-f84e-400e-b7aa-ecb6377daa63/osist-pren-17361-2022)
<https://standards.iteh.ai/catalog/standards/sist/f5ad7df0-f84e-400e-b7aa-ecb6377daa63/osist-pren-17361-2022>

prEN 17361:2022 (E)**1 Scope**

This document applies to outboard ladders for inland navigation vessels. Outboard ladders are used on inland navigation vessels having great side heights to facilitate safe climbing into ship's boats, safe disembarking or safe crossing over onto vessels in the case of significantly different boarding heights.

This document specifies safety requirements on design, dimensions and strength and test conditions for outboard ladders.

Outboard ladders are intended for that range where boarding stairs according to EN 1502 are not sufficient in length. This range starts at a boarding height of approximately at 2,8 m above the light water-line.

Boarding ladders are not intended for use by passengers.

2 Normative references

The following documents are referred to in the text in such a way that some or all of their content constitutes requirements of this document. For dated references, only the edition cited applies. For undated references, the latest edition of the referenced document (including any amendments) applies.

EN 22768-1, *General tolerances - Part 1: Tolerances for linear and angular dimensions without individual tolerance indications (ISO 2768-1)*

EN ISO 3506-1, *Fasteners - Mechanical properties of corrosion-resistant stainless steel fasteners - Part 1: Bolts, screws and studs with specified grades and property classes (ISO 3506-1)*

EN ISO 3506-2, *Fasteners - Mechanical properties of corrosion-resistant stainless steel fasteners - Part 2: Nuts with specified grades and property classes (ISO 3506-2)*

3 Terms and definitions

For the purposes of this document, the following terms and definitions apply.

ISO and IEC maintain terminological databases for use in standardization at the following addresses:

- IEC Electropedia: available at <https://www.electropedia.org/>
- ISO Online browsing platform: available at <https://www.iso.org/obp>

3.1 outboard ladder

removable and displaceable device with rungs to be attached to the vessel's side for boarding and disembarking

3.2 handhold

<inland navigation> upper part of stringer of outboard ladder

3.3 platform

<inland navigation> enlarged top rung of outboard ladder

3.4 stringer

<inland navigation> lateral limitation of outboard ladder supporting the rungs

3.5**rung**

<inland navigation> treads of outboard ladder

3.6**spacer**

construction to ensure a distance between the vessel's side and the outboard ladder

3.7**web**

part for strengthening the platform and as connection for the adjustable hook

3.8**adjustable hook**

construction for hooking the outboard ladder to the vessel's side

3.9**holder**

part of the outboard ladder by which it is hooked to the vessel's side

Note 1 to entry: Lower part of the handhold or adjustable hook.

4 Safety requirements**4.1 Dimensions**

General tolerances: ISO 2768 – c (see EN 22768-1).

The dimensions are shown in Figures 1 to 5 and in Table 1.

Edges shall be rounded to min. R 1,5 mm.

Data which have not been specified shall be selected as appropriate.

4.2 Parts**4.2.1 General**

Ouboard ladders are not expected to conform to the designs illustrated here; however, the dimensions and specifications given shall be followed. Maximum permissible masses are shown in Table 1.

4.2.2 Stringer and handhold

4.2.2.1 The stringers extending on both sides above the platform are used as handholds. On that side which faces the vessel's wall, the handholds shall be designed according to Figure 5.

4.2.2.2 Stringers and handholds shall be made from tubular section tube with \varnothing 40 mm. Alternative profiles with the same strength are acceptable.

4.2.3 Steps**4.2.3.1 General**

Steps are the rungs and the platform.

4.2.3.2 Rung

Rungs shall be made of rectangular hollow profile, e.g. 40 mm × 30 mm.

prEN 17361:2022 (E)

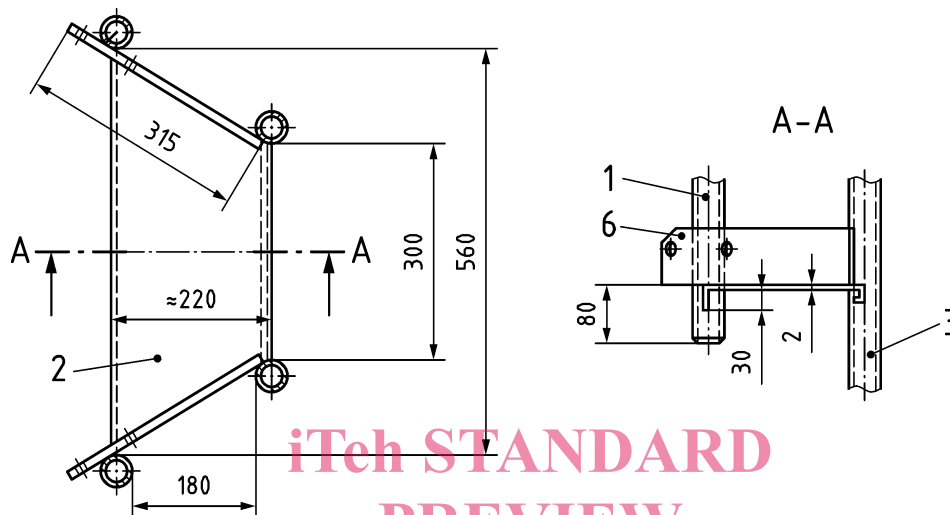
4.2.3.3 Platform

The Platform shall be made of quintet raffle (chequer) plate or equivalent profile, on which no water can accumulate.

Shape and dimensions of the platform (tread with two webs) as specified in Figure 1.

Web dimensions shall correspond to Figure 3.

Dimensions in millimetres



Key

See Figure 5.

iTeh STANDARD
PREVIEW
(standards.iteh.ai)

Figure 1 — Platform

[oSIST prEN 17361:2022](https://standards.iteh.ai/catalog/standards/sist/f5ad7df0-f84e-400e-b7aa-ecb6377daa63/osist-pren-17361-2022)

<https://standards.iteh.ai/catalog/standards/sist/f5ad7df0-f84e-400e-b7aa-ecb6377daa63/osist-pren-17361-2022>

4.2.4 Spacers

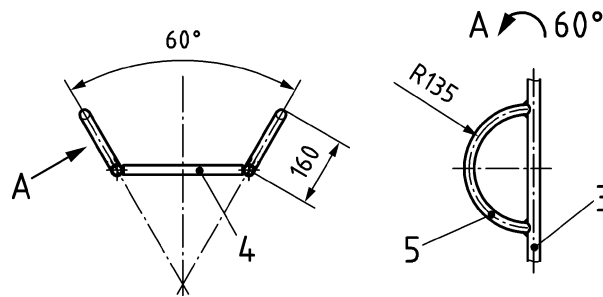
Spacers shall be made of pipe section \varnothing 30 mm

Spacers shall be firmly attached to each stringer:

- between the first and second rung;
- at midlength of the outboard ladder;
- between the second last and last rung.

Shape and spreading angle of the spacers shall correspond to Figure 2.

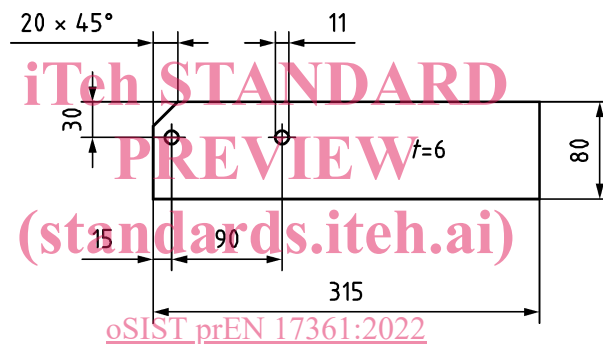
Dimensions in millimetres

**Key**

See Figure 5.

Figure 2 — Spacers**4.2.5 Web**

Dimensions in millimetres

**Key** t thickness

oSIST prEN 17361:2022
<https://standards.iteh.ai/catalog/standards/sist/f5ad7df0-f84e-400e-b7aa-ecb6377daa63/osist-pren-17361-2022>

Figure 3 — Web**4.3 Holder of the outboard ladder****4.3.1 General**

The holder to hook the outboard ladder onto the shell of the vessel is rigid for the Type A and adjustable for the Type B.

NOTE Outboard ladders of Type A can be converted to outboard ladders of Type B by attaching two adjustable hooks (H) as specified in 4.4. This is the reason why the webs are provided with two screw holes.

4.3.2 Type A

The hook-shaped holder is formed by the two ship-side ends of the handrail which extend down beyond the webs, see Figure 5 a) and Figure 5 b).

prEN 17361:2022 (E)

4.3.3 Type B

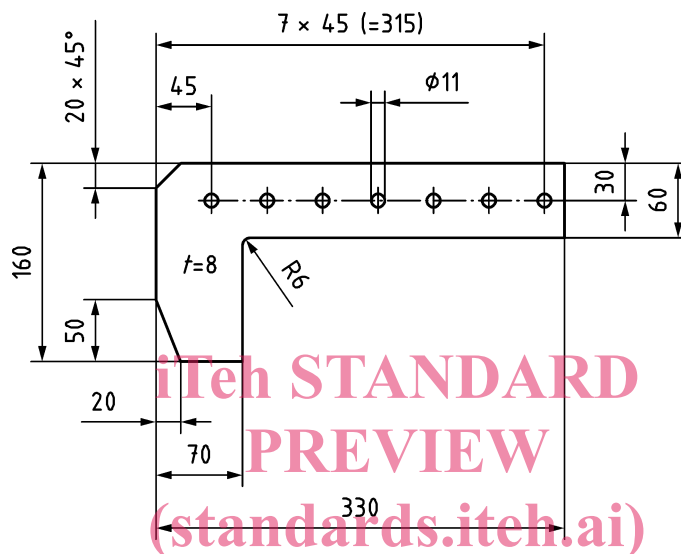
Holder as for Type A but additionally equipped with an adjustable screw-on hook by means of which the hook engagement length can be adjusted to the construction of the vessel, see Figure 5 c).

For details of the adjustable hook (H) see 4.4.

4.4 Adjustable hook (H)

4.4.1 Dimensions

Dimensions in millimetres



Key

t thickness

[oSIST prEN 17361:2022](https://standards.iteh.ai/catalog/standards/sist/f5ad7df0-f84e-4017-b1e1-731173117311/pr-en-17361-2022)

<https://standards.iteh.ai/catalog/standards/sist/f5ad7df0-f84e-4017-b1e1-731173117311/pr-en-17361-2022>

Figure 4 – Adjustable hook (H)

4.4.2 Fasteners

Per adjustable hook:

- two hexagon head bolts M10 × 25 according to EN ISO 3506-1;
- two hexagon nuts according to EN ISO 3506-2 with spring washer and plain washer.