

---

---

**Glass packaging — 26 H 126 crown  
finish — Dimensions**

*Emballages en verre — Bague couronne 26 H 126 — Dimensions*

**iTeh STANDARD PREVIEW**  
**(standards.iteh.ai)**

[ISO 12822:2020](https://standards.iteh.ai/catalog/standards/sist/081bfd2d-81ae-483b-b364-bacea866adf7/iso-12822-2020)

<https://standards.iteh.ai/catalog/standards/sist/081bfd2d-81ae-483b-b364-bacea866adf7/iso-12822-2020>



**iTeh STANDARD PREVIEW**  
**(standards.iteh.ai)**

ISO 12822:2020

<https://standards.iteh.ai/catalog/standards/sist/081bfd2d-81ae-483b-b364-bacea866adf7/iso-12822-2020>



**COPYRIGHT PROTECTED DOCUMENT**

© ISO 2020

All rights reserved. Unless otherwise specified, or required in the context of its implementation, no part of this publication may be reproduced or utilized otherwise in any form or by any means, electronic or mechanical, including photocopying, or posting on the internet or an intranet, without prior written permission. Permission can be requested from either ISO at the address below or ISO's member body in the country of the requester.

ISO copyright office  
CP 401 • Ch. de Blandonnet 8  
CH-1214 Vernier, Geneva  
Phone: +41 22 749 01 11  
Fax: +41 22 749 09 47  
Email: [copyright@iso.org](mailto:copyright@iso.org)  
Website: [www.iso.org](http://www.iso.org)

Published in Switzerland

# Contents

	Page
Foreword .....	iv
Introduction .....	v
1 Scope .....	1
2 Normative references .....	1
3 Terms and definitions .....	1
4 Dimensions .....	1
Bibliography .....	6

## iTeh STANDARD PREVIEW (standards.iteh.ai)

[ISO 12822:2020](https://standards.iteh.ai/catalog/standards/sist/081bfd2d-81ae-483b-b364-bacea866adf7/iso-12822-2020)

<https://standards.iteh.ai/catalog/standards/sist/081bfd2d-81ae-483b-b364-bacea866adf7/iso-12822-2020>

## Foreword

ISO (the International Organization for Standardization) is a worldwide federation of national standards bodies (ISO member bodies). The work of preparing International Standards is normally carried out through ISO technical committees. Each member body interested in a subject for which a technical committee has been established has the right to be represented on that committee. International organizations, governmental and non-governmental, in liaison with ISO, also take part in the work. ISO collaborates closely with the International Electrotechnical Commission (IEC) on all matters of electrotechnical standardization.

The procedures used to develop this document and those intended for its further maintenance are described in the ISO/IEC Directives, Part 1. In particular, the different approval criteria needed for the different types of ISO documents should be noted. This document was drafted in accordance with the editorial rules of the ISO/IEC Directives, Part 2 (see [www.iso.org/directives](http://www.iso.org/directives)).

Attention is drawn to the possibility that some of the elements of this document may be the subject of patent rights. ISO shall not be held responsible for identifying any or all such patent rights. Details of any patent rights identified during the development of the document will be in the Introduction and/or on the ISO list of patent declarations received (see [www.iso.org/patents](http://www.iso.org/patents)).

Any trade name used in this document is information given for the convenience of users and does not constitute an endorsement.

For an explanation of the voluntary nature of standards, the meaning of ISO specific terms and expressions related to conformity assessment, as well as information about ISO's adherence to the World Trade Organization (WTO) principles in the Technical Barriers to Trade (TBT) see [www.iso.org/iso/foreword.html](http://www.iso.org/iso/foreword.html).

This document was prepared by Technical Committee ISO/TC 63, *Glass containers*.

This second edition cancels and replaces the first edition (ISO 12822:2015), which has been technically revised.

The main changes compared to the previous edition are as follows:

- changes in [Figures 2, 3, 4](#) and [5](#);
- deletion of reference to the Cetie datasheet EC 1-02;
- “crown closure” and “crown cork” replaced by “crown cap”;
- editorial corrections.

Any feedback or questions on this document should be directed to the user's national standards body. A complete listing of these bodies can be found at [www.iso.org/members.html](http://www.iso.org/members.html).

## Introduction

This document is based on Reference [1].

Efficient packaging is of great importance for the distribution and the protection of goods. Insufficient or inappropriate packaging can lead to damage or wastage of the contents of the pack.

## iTeh STANDARD PREVIEW (standards.iteh.ai)

ISO 12822:2020

<https://standards.iteh.ai/catalog/standards/sist/081bfd2d-81ae-483b-b364-bacea866adf7/iso-12822-2020>

**iTeh STANDARD PREVIEW**  
**(standards.iteh.ai)**

ISO 12822:2020

<https://standards.iteh.ai/catalog/standards/sist/081bfd2d-81ae-483b-b364-bacea866adf7/iso-12822-2020>

# Glass packaging — 26 H 126 crown finish — Dimensions

## 1 Scope

This document specifies the dimensions of the 26 mm-shallow crown finish for glass bottles containing beverages. The shallow crown finish is designed to use a metal crown cap (see Reference [2]).

## 2 Normative references

The following documents are referred to in the text in such a way that some or all of their content constitutes requirements of this document. For dated references, only the edition cited applies. For undated references, the latest edition of the referenced document (including any amendments) applies.

ISO 9058, *Glass containers — Standard tolerances for bottles*

## 3 Terms and definitions

No terms and definitions are listed in this document.

ISO and IEC maintain terminological databases for use in standardization at the following addresses:

— ISO Online browsing platform: available at <https://www.iso.org/obp>

— IEC Electropedia: available at <http://www.electropedia.org/>

ISO 12822:2020

<https://standards.iteh.ai/catalog/standards/sist/081bfd2d-81ae-483b-b364-bacea866adf7/iso-12822-2020>

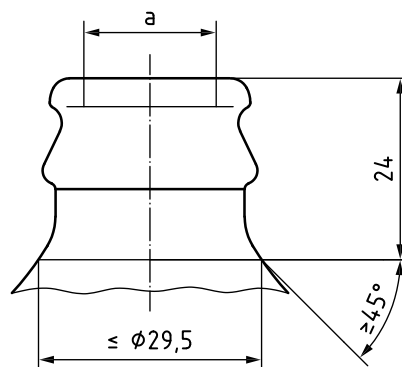
## 4 Dimensions

The design and dimensions of the finish shall be as shown in [Figure 1](#) to [Figure 5](#).

Details which are not specified shall be selected in accordance with the application.

The general tolerances shall be in accordance with ISO 9058.

Dimensions in millimetres



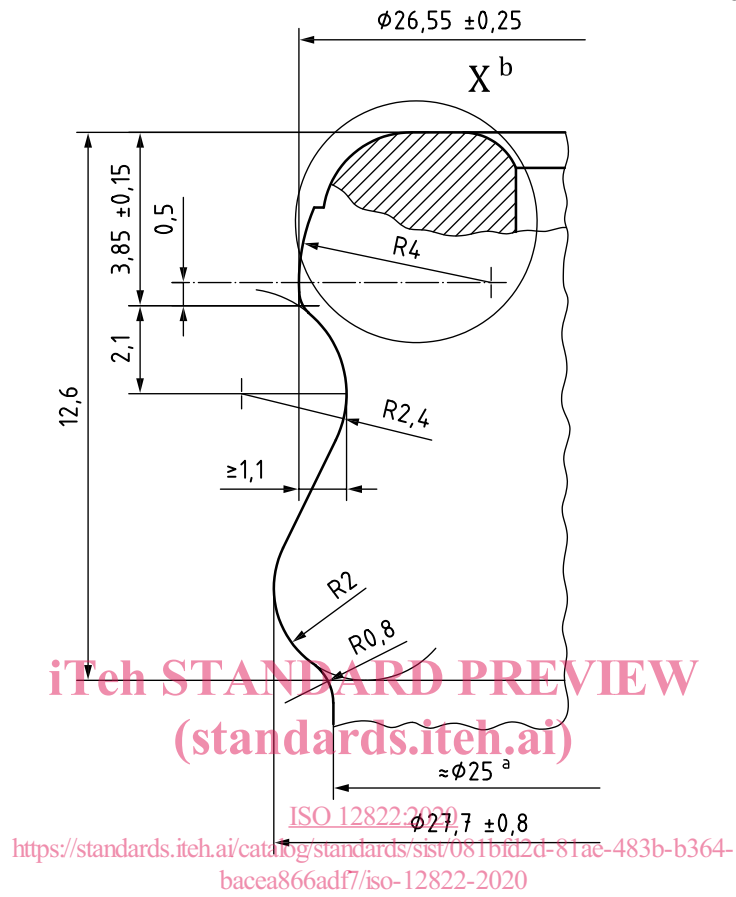
### Key

- <sup>a</sup>  $\phi$  between 18,5 max and 17 min measured at 3 mm max down from the top, see key d in [Figures 4](#) and [5](#) minimum through  $\phi$  bore 15,5 m.

**Figure 1 — Shoulder and bore dimensions**

Construction limit: certain capping equipment may place further dimensional limits on the neck contour.

Dimensions in millimetres



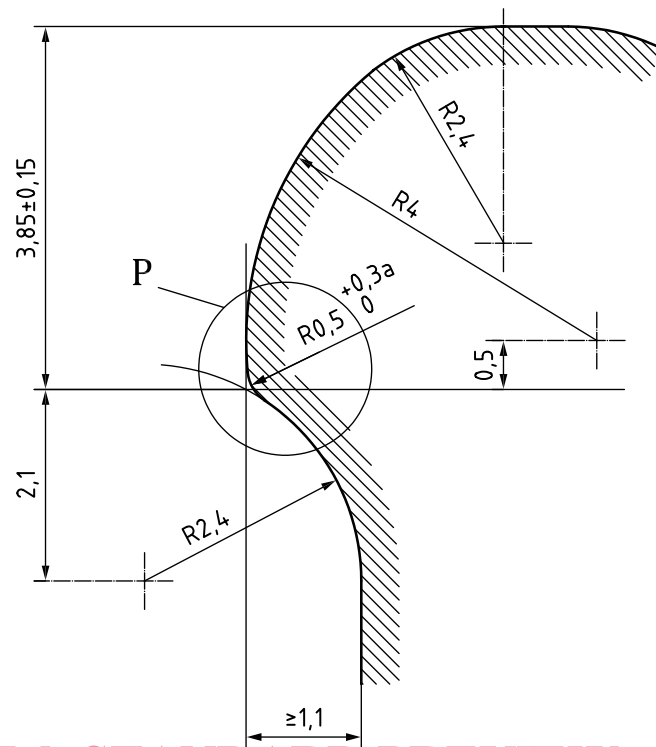
**Key**

- <sup>a</sup> Nominal diameter to suit glass manufacturer.
- <sup>b</sup> Detail X (see [Figure 4](#) and [Figure 5](#)).

**Figure 2 — Profile of the finish**



Dimensions in millimetres



iTeh STANDARD PREVIEW

**Key**

- P figures the dimensions relating to the contact zone between the finish and the corrugated skirt of the cap when crimped, known as the "P" point
- a For optimum performance, the radius should lie between 0,5 mm and 0,8 mm excluding the vertical mould seam and be as near as possible to 0,5 mm.

**Figure 3 — Definition of the crimping edge ("P" point)**