
**Mechanical vibration — Measurement
and evaluation of machine
vibration —**

**Part 4:
Gas turbines in excess of 3 MW, with
fluid-film bearings**

iTeh STANDARD PREVIEW
(standards.iteh.ai)

*Vibrations mécaniques — Mesurage et évaluation des vibrations de
machines —*

Partie 4: Turbines à gaz à paliers à film fluide, excédant 3 MW

<https://standards.iteh.ai/catalog/standards/sist/92e1b106-c05c-4ced-9945-50a87061bc03/iso-20816-4-2018>



iTeh STANDARD PREVIEW
(standards.iteh.ai)

ISO 20816-4:2018

<https://standards.iteh.ai/catalog/standards/sist/92e1b106-c05c-4ced-9945-50a87061bc03/iso-20816-4-2018>



COPYRIGHT PROTECTED DOCUMENT

© ISO 2018

All rights reserved. Unless otherwise specified, or required in the context of its implementation, no part of this publication may be reproduced or utilized otherwise in any form or by any means, electronic or mechanical, including photocopying, or posting on the internet or an intranet, without prior written permission. Permission can be requested from either ISO at the address below or ISO's member body in the country of the requester.

ISO copyright office
CP 401 • Ch. de Blandonnet 8
CH-1214 Vernier, Geneva
Phone: +41 22 749 01 11
Fax: +41 22 749 09 47
Email: copyright@iso.org
Website: www.iso.org

Published in Switzerland

Contents

	Page
Foreword	iv
Introduction	v
1 Scope	1
2 Normative references	2
3 Terms and definitions	2
4 Measurement procedures	2
4.1 General.....	2
4.2 Measurements of vibration of non-rotating parts.....	3
4.3 Measurements of vibration of rotating shafts.....	5
5 Evaluation criteria	6
5.1 General.....	6
5.2 Criterion I: vibration magnitude.....	7
5.2.1 General.....	7
5.2.2 Vibration magnitude at rated speed under steady-state operating conditions.....	7
5.2.3 Operational limits for steady-state operation.....	9
5.2.4 Vibration magnitude during non-steady-state conditions (transient operation).....	10
5.3 Criterion II: change in vibration magnitude under steady-state conditions at rated speed.....	12
5.4 Supplementary procedures/criteria.....	13
5.5 Evaluation based on vibration vector information.....	13
Annex A (normative) Evaluation zone boundaries for vibration of non-rotating parts	14
Annex B (normative) Evaluation zone boundaries for vibration of rotating shafts	15
Annex C (informative) Example of setting ALARM and TRIP values	17
Annex D (informative) Cautionary notes about the use of vibration velocity criteria at low rotational speeds	18
Annex E (informative) Evaluation zone boundary limits and bearing clearance	20
Bibliography	21

Foreword

ISO (the International Organization for Standardization) is a worldwide federation of national standards bodies (ISO member bodies). The work of preparing International Standards is normally carried out through ISO technical committees. Each member body interested in a subject for which a technical committee has been established has the right to be represented on that committee. International organizations, governmental and non-governmental, in liaison with ISO, also take part in the work. ISO collaborates closely with the International Electrotechnical Commission (IEC) on all matters of electrotechnical standardization.

The procedures used to develop this document and those intended for its further maintenance are described in the ISO/IEC Directives, Part 1. In particular the different approval criteria needed for the different types of ISO documents should be noted. This document was drafted in accordance with the editorial rules of the ISO/IEC Directives, Part 2 (see www.iso.org/directives).

Attention is drawn to the possibility that some of the elements of this document may be the subject of patent rights. ISO shall not be held responsible for identifying any or all such patent rights. Details of any patent rights identified during the development of the document will be in the Introduction and/or on the ISO list of patent declarations received (see www.iso.org/patents).

Any trade name used in this document is information given for the convenience of users and does not constitute an endorsement.

For an explanation on the voluntary nature of standards, the meaning of ISO specific terms and expressions related to conformity assessment, as well as information about ISO's adherence to the World Trade Organization (WTO) principles in the Technical Barriers to Trade (TBT) see the following URL: www.iso.org/iso/foreword.html. (standards.iteh.ai)

This document was prepared by Technical Committee ISO/TC 108, *Mechanical vibration, shock and condition monitoring*, Subcommittee SC 2, *Measurement and evaluation of mechanical vibration and shock as applied to machines, vehicles and structures*.
ISO 20816-4:2018
<https://standards.iteh.ai/catalog/standards/sist/92e1b106-c05c-4ced-9945-50a87061bc03/iso-20816-4-2018>

This first edition of ISO 20816-4 cancels and replaces ISO 7919-4:2009 and ISO 10816-4:2009, which have been technically revised. It also incorporates the Amendments ISO 7919-4/Amd.1:2017 and ISO 10816-4/Amd.1:2017.

The main change is that the scope has been reduced to exclude large gas turbines with power outputs greater than 40 MW, fluid-film bearings and rated speeds of 1 500 r/min, 1 800 r/min, 3 000 r/min or 3 600 r/min. Such gas turbines are now covered by ISO 20816-2.

A list of all parts in the ISO 20816 series can be found on the ISO website.

Introduction

Documents in the ISO 20816 series have been and are being developed to combine and supersede the ISO 7919 and ISO 10816 series.

ISO 20816-1 is the basic part of the ISO 20816 series that gives the general requirements for evaluating the vibration of various machine types when the vibration measurements are made on both non-rotating and rotating parts. ISO 20816-2 deals with the measurement and evaluation of machine vibration of large gas turbines with certain rotational speeds.

This document provides specific provisions for assessing the vibration of the bearing housings or pedestals and rotating shafts of those gas turbines which are not covered by ISO 20816-2. Measurements at these locations characterize the state of vibration reasonably well. Evaluation criteria, based on previous experience, are presented. These can be used for assessing the vibratory condition of such machines. In those cases where there is a high ratio between the mass of the bearing supports and the rotor, lower values of vibration of the bearing housings or pedestals can be appropriate.

Two criteria are provided for assessing the machine vibration when operating under steady-state conditions. One criterion considers the magnitude of the observed vibration; the second considers changes in the magnitude. In addition, different criteria are provided for transient operating conditions.

The evaluation procedures presented in this document are based on broad-band measurements. However, because of advances in technology, the use of narrow-band measurements or spectral analysis has become increasingly widespread, particularly for the purposes of vibration evaluation, condition monitoring and diagnostics. The specification of criteria for such measurements is beyond the scope of this document. They are provided in greater detail in the relevant parts of ISO 13373 which establish provisions for the vibration condition monitoring of machines.

[ISO 20816-4:2018](https://standards.iteh.ai/catalog/standards/sist/92e1b106-c05c-4ced-9945-50a87061bc03/iso-20816-4-2018)

<https://standards.iteh.ai/catalog/standards/sist/92e1b106-c05c-4ced-9945-50a87061bc03/iso-20816-4-2018>

iTeh STANDARD PREVIEW
(standards.iteh.ai)

ISO 20816-4:2018

<https://standards.iteh.ai/catalog/standards/sist/92e1b106-c05c-4ced-9945-50a87061bc03/iso-20816-4-2018>

Mechanical vibration — Measurement and evaluation of machine vibration —

Part 4: Gas turbines in excess of 3 MW, with fluid-film bearings

1 Scope

This document is applicable to land-based gas turbines with fluid-film bearings and power outputs greater than 3 MW and an operating speed under load between 3 000 r/min and 30 000 r/min. In some cases (see the list of exclusions below), this includes other rotating machinery coupled either directly or through a gearbox. The evaluation criteria provided in this document are applicable to the vibration of the main input and output bearings of the gearbox but are not applicable to the vibration of the internal gearbox bearings nor to the assessment of the condition of those gears. Specialist techniques required for evaluating the condition of gears are outside the scope of this document.

This document is not applicable to the following:

- i) gas turbines with power outputs greater than 40 MW at rated speeds of 1 500 r/min, 1 800 r/min, 3 000 r/min or 3 600 r/min (see ISO 20816-2);
- ii) aero-derivative gas turbines (including gas turbines with dynamic properties similar to those of aero-derivatives);

NOTE ISO 3977-3 defines aero-derivatives as aircraft propulsion gas generators adapted to drive mechanical, electrical or marine propulsion equipment. Large differences exist between heavy-duty and aero-derivative gas turbines, for example, in casing flexibility, bearing design, rotor-to-stator mass ratio and mounting structure. Different criteria, therefore, apply for these two turbine types.

- iii) gas turbines with outputs less than or equal to 3 MW (see ISO 7919-3 and ISO 10816-3);
- iv) turbine driven generators (see ISO 20816-2, ISO 7919-3 and ISO 10816-3);
- v) turbine driven pumps (see ISO 10816-7);
- vi) turbine driven rotary compressors (see ISO 7919-3 and ISO 10816-3);
- vii) the evaluation of gearbox vibration (see this clause) but does not preclude monitoring of gearbox vibration;
- viii) the evaluation of combustion vibration but does not preclude monitoring of combustion vibration;
- ix) rolling element bearing vibration.

This document establishes provisions for evaluating the severity of the following *in-situ* broad-band vibrations:

- a) structural vibration at all main bearing housings or pedestals measured radial (i.e. transverse) to the shaft axis;
- b) structural vibration at thrust bearing housings measured in the axial direction;
- c) vibration of rotating shafts radial (i.e. transverse) to the shaft axis at, or close to, the main bearings.

These are in terms of the following:

- vibration under normal steady-state operating conditions;
- vibration during other (non-steady-state) conditions when transient changes are taking place, including run up or run down, initial loading and load changes;
- changes in vibration which can occur during normal steady-state operation.

2 Normative references

The following documents are referred to in the text in such a way that some or all of their content constitutes requirements of this document. For dated references, only the edition cited applies. For undated references, the latest edition of the referenced document (including any amendments) applies.

ISO 20816-1:2016, *Mechanical vibration — Measurement and evaluation of machine vibration — Part 1: General guidelines*

3 Terms and definitions

No terms and definitions are listed in this document.

ISO and IEC maintain terminological databases for use in standardization at the following addresses:

- ISO Online browsing platform: available at <https://www.iso.org/obp>
- IEC Electropedia: available at <http://www.electropedia.org/>

4 Measurement procedures

ISO 20816-4:2018

<https://standards.iteh.ai/catalog/standards/sist/92e1b106-c05c-4ced-9945-50a87061bc03/iso-20816-4-2018>

4.1 General

The measurement procedures and instrumentation shall comply with the general requirements given in ISO 20816-1.

ISO 20816-1, as well as this document, cover vibration of non-rotating parts and rotating shafts. However, this does not mean that both sets of measurements shall be taken on any particular machine. The choice of whether to measure vibration of non-rotating parts, rotating shafts or a combination of both is dependent on the particular application and shall always be agreed between the machine supplier and purchaser prior to installation. As a general guidance, it should be noted that bearing cap vibration is more sensitive where the rotor mass is large and the pedestal is flexible, whereas relative shaft vibration is more sensitive where the pedestal is large and stiff, and the rotor light and flexible.

The characteristics of the measurement system should be known with regard to the effects of the environment. Care should be taken to ensure that the measurement equipment is not unduly influenced by external sources, including

- a) temperature variations,
- b) electromagnetic fields,
- c) airborne and structure-borne noise, e.g. from gear mesh vibration or combustion vibration or neighbouring machines,
- d) transducer power source variations,
- e) cable impedance,
- f) transducer cable length,

- g) transducer orientation, and
- h) structural characteristics of the transducer attachment.

In special cases where significant low-frequency vibration can be transmitted to the machine, such as in earthquake regions, it can be necessary to filter the low-frequency response of the instrumentation.

If measurements at different times or from different machines are compared, care should be taken to ensure that the same frequency range is used and the data should be taken with the machine operating under stable conditions at the same rotational speed and load.

4.2 Measurements of vibration of non-rotating parts

For monitoring purposes, the measurement system shall be capable of measuring broad-band vibration over a frequency range from 10 Hz to at least three times the maximum normal operating frequency or 500 Hz, whichever is greater. If, however, the instrumentation is also used for diagnostic purposes, a wider frequency range and/or spectral analysis can be necessary. For example, in cases where the frequency corresponding to the first resonance speed (critical speed) of the coupled rotors is below 10 Hz, the lower limit of the linear range of the measurement system shall be reduced accordingly.

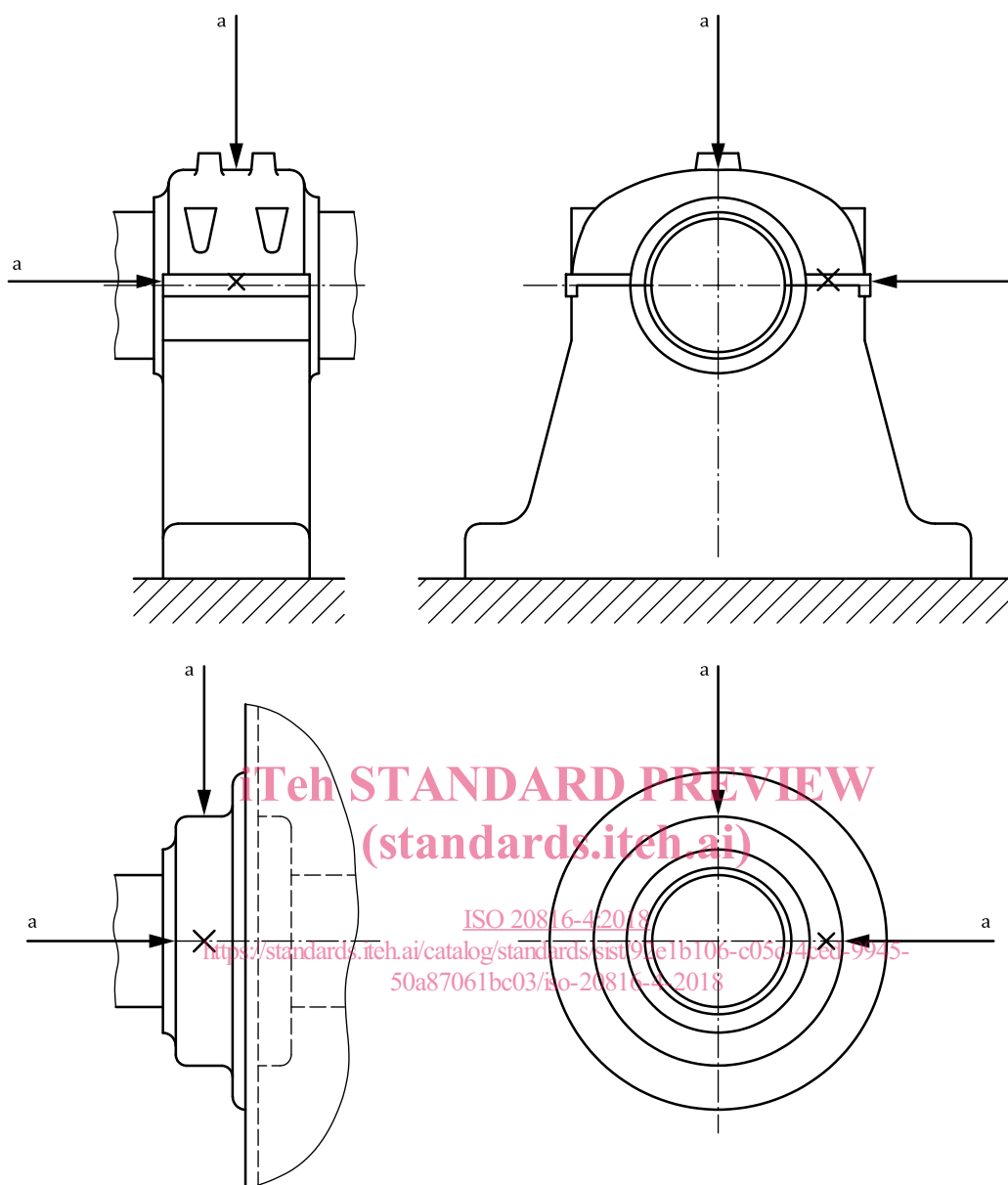
If the measurement is carried out using a velocity transducer and measurements below 10 Hz are required, it is important to linearize the velocity signal. This is particularly important when evaluating vibration velocity at lower speeds (see ISO 2954).

The locations of vibration measurements should be such that they provide adequate sensitivity to the dynamic forces of the machine. Typically, it involves measuring in two radial directions on each main bearing cap or pedestal with a pair of orthogonal transducers, as shown in [Figure 1](#) and [Figure 2](#). The transducers may be placed at any angular location on the bearing housings or pedestals, although vertical and horizontal directions (i.e. principal stiffness directions) are usually preferred.

A single radial transducer may be used on a bearing cap or pedestal in place of the more typical pair of orthogonal transducers if it is known to provide adequate information on the magnitude of the machine vibration. In general, however, caution should be observed when evaluating vibration from a single transducer at a measurement plane, since it might not be oriented to provide a reasonable approximation of the maximum value at that plane.

It is not common practice to measure axial vibration on the main radial load carrying bearings for continuous operational monitoring. Such measurements are primarily used during periodic vibration surveys or for diagnostic purposes. Hence, in this document, axial vibration criteria are only provided for thrust bearings where the vibration severity can be judged using the same criteria as for radial vibration (see [Table A.1](#)). For other bearings, where there are no axial restraints, a less stringent requirement may be used for the evaluation of axial vibration, provided that ancillary pipework and equipment are not adversely affected.

Particular attention should be given to ensuring that the vibration transducers are correctly mounted and that the mounting arrangement does not degrade the accuracy of the measurement (see e.g. ISO 2954 and ISO 5348).

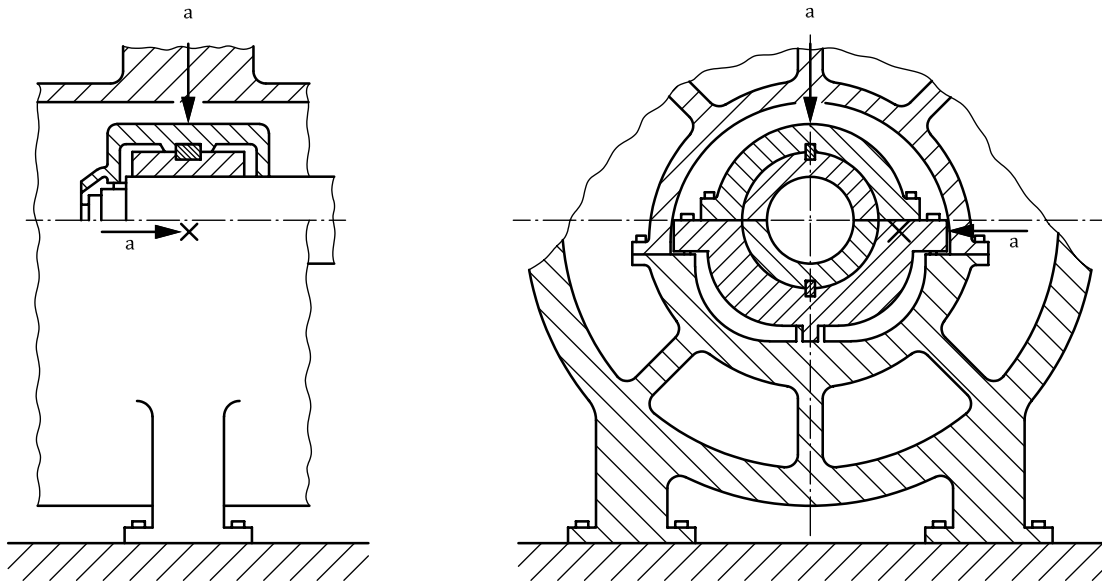


Key

a Direction of measurement.

NOTE The evaluation criteria in this document are applicable to radial vibration on all main bearings and to axial vibration on thrust bearings.

Figure 1 — Typical measuring points and directions on bearing pedestals and bearing caps



Key

a Direction of measurement.

NOTE The evaluation criteria in this document are applicable to radial vibration on all main bearings and to axial vibration on thrust bearings.

Figure 2 — Typical measuring points and directions on a gas turbine bearing
 (standards.iteh.ai)

4.3 Measurements of vibration of rotating shafts

Shaft relative vibration (i.e. the vibration of the rotating shaft relative to the supporting structure) measurements are the preferred measurement quantity for shaft vibration of gas turbines.

For monitoring purposes, the measurement system shall be capable of measuring broad-band vibration over a frequency range from 1 Hz to at least three times the maximum normal operating frequency or 500 Hz, whichever is greater. If, however, the instrumentation is also used for diagnostic purposes, a wider frequency range (e.g. up to six times the maximum normal operating frequency) and/or spectral analysis can be necessary.

The locations of vibration measurements should be such that the transverse movement of the shaft at points of importance can be assessed. Typically, it involves measuring in two radial directions with a pair of orthogonal transducers at, or adjacent to, each main bearing. The transducers may be placed at any angular location, but it is common practice to select locations on the same bearing half which are either at $\pm 45^\circ$ to the vertical direction (top dead centre 12 o'clock position) or close to the vertical and horizontal directions (see [Figure 3](#)).

A single radial transducer may be used in place of the more typical pair of orthogonal transducers, if it is known to provide adequate information on the magnitude of the shaft vibration. In general, however, caution should be exercised when evaluating vibration from a single transducer at a measurement plane since it might not be oriented to provide a reasonable approximation of the maximum value at that plane.

It is not common practice to measure axial shaft vibration on gas turbines. Where measurements of axial position are made using non contacting transducers and are included within the vibration monitoring system, the assessment of the signal is not covered within this document.