

8 [[]Hb]`WV] b]`hY`Y_ca i b]_UW`g_]`g]ghYa `fZuU&ŽL`Ě; c] cf`g`dc`c]] bc` \]fchgħc`Ě
8 YhY`hcf` [c] cf b]` `XY`Uj bcgh`fU 5 8 L`df]`dfca Yfb]` ` _UbU]` `g`dc`c]] bc` \]fchgħc`
[c] cfUf] GA`\$`'(`&žfUh`]]WU`*`\$`%Ž]nXU`U%- +L

Digital cellular telecommunications system (Phase 2+) (GSM); Half rate speech; Voice Activity Detector (VAD) for half rate speech traffic channels (GSM 06.42 version 6.0.1 Release 1997)

iTeh STANDARD PREVIEW
(standards.iteh.ai)

[SIST EN 300 973 V6.0.1:2003](https://standards.iteh.ai/catalog/standards/sist/6d8b0a85-ecf9-42d2-a664-f6a444e962cb/sist-en-300-973-v6-0-1-2003)
<https://standards.iteh.ai/catalog/standards/sist/6d8b0a85-ecf9-42d2-a664-f6a444e962cb/sist-en-300-973-v6-0-1-2003>

Ta slovenski standard je istoveten z: EN 300 973 Version 6.0.1

ICS:

33.070.50	Globalni sistem za mobilno telekomunikacijo (GSM)	Global System for Mobile Communication (GSM)
-----------	---	--

SIST EN 300 973 V6.0.1:2003 **en**

iTeh STANDARD PREVIEW **(standards.iteh.ai)**

SIST EN 300 973 V6.0.1:2003

<https://standards.iteh.ai/catalog/standards/sist/6d8b0a85-ee9-42d2-a664-f6a444e962cb/sist-en-300-973-v6-0-1-2003>

EN 300 973 V6.0.1 (1999-06)

European Standard (Telecommunications series)

**Digital cellular telecommunications system (Phase 2+);
Half rate speech;
Voice Activity Detector (VAD)
for half rate speech traffic channels
(GSM 06.42 version 6.0.1 Release 1997)**

iTeh STANDARD PREVIEW
(standards.iteh.ai)

GSM®
GLOBAL SYSTEM FOR
MOBILE COMMUNICATIONS

[SIST EN 300 973 V6.0.1:2003](https://standards.iteh.ai/catalog/standards/sist/6d8b0a85-ecf9-42d2-a664-f6a444e962cb/sist-en-300-973-v6-0-1-2003)

<https://standards.iteh.ai/catalog/standards/sist/6d8b0a85-ecf9-42d2-a664-f6a444e962cb/sist-en-300-973-v6-0-1-2003>



Reference

DEN/SMG-110642Q6 (90c0300o.PDF)

Keywords

Digital cellular telecommunications system,
Global System for Mobile communications (GSM)

ETSI

Postal address

F-06921 Sophia Antipolis Cedex - FRANCE

Office address

650 Route des Lucioles - Sophia Antipolis
Valbonne - FRANCE

Tel.: +33 4 92 94 42 00 - Fax: +33 4 93 65 47 16

Siret N° 348 623 562 00017 - NAF 742 C

Association à but non lucratif enregistrée à la

Sous-Préfecture de Grasse (06) N° 7803/88

Internet

secretariat@etsi.fr

Individual copies of this ETSI deliverable

can be downloaded from

<http://www.etsi.org>

Copyright Notification

No part may be reproduced except as authorized by written permission.
The copyright and the foregoing restriction extend to reproduction in all media.

© European Telecommunications Standards Institute 1999.
All rights reserved.

Contents

Intellectual Property Rights.....	4
Foreword	4
1 Scope	6
2 References	6
3 Definitions, symbols and abbreviations	6
3.1 Definitions	6
3.2 Symbols	6
3.2.1 Variables	7
3.2.2 Constants	7
3.2.3 Functions	7
3.3 Abbreviations	8
4 General	8
5 Functional description	8
5.1 Overview and principles of operation	8
5.2 Algorithm description	9
5.2.1 Adaptive filtering and energy computation	10
5.2.2 ACF averaging	10
5.2.3 Predictor values computation	10
5.2.4 Spectral comparison	11
5.2.5 Information tone detection	11
5.2.6 Threshold adaptation	12
5.2.7 VAD decision	14
5.2.8 VAD hangover addition	14
5.2.9 Periodicity detection	14
6 Computational description overview	15
6.1 VAD modules	15
6.2 Pseudo-floating point arithmetic	15
Annex A (informative): VAD performance	17
Annex B (informative): Simplified block filtering operation.....	18
Annex C (informative): Pole frequency calculation.....	19
Annex D (informative): Change Request History	20
History	21

Intellectual Property Rights

IPRs essential or potentially essential to the present document may have been declared to ETSI. The information pertaining to these essential IPRs, if any, is publicly available for **ETSI members and non-members**, and can be found in SR 000 314: *"Intellectual Property Rights (IPRs); Essential, or potentially Essential, IPRs notified to ETSI in respect of ETSI standards"*, which is available **free of charge** from the ETSI Secretariat. Latest updates are available on the ETSI Web server (<http://www.etsi.org/ipr>).

Pursuant to the ETSI IPR Policy, no investigation, including IPR searches, has been carried out by ETSI. No guarantee can be given as to the existence of other IPRs not referenced in SR 000 314 (or the updates on the ETSI Web server) which are, or may be, or may become, essential to the present document.

Foreword

This European Standard (Telecommunications series) has been produced by ETSI Technical Committee Special Mobile Group (SMG).

The present document specifies the Voice Activity Detector (VAD) to be used in the Discontinuous Transmission (DTX) within the digital cellular telecommunications system. The present document is part of a series covering the half rate speech traffic channels as described below:

- | | |
|------------------|--|
| GSM 06.02 | "Digital cellular telecommunications system (Phase 2+); Half rate speech; Half rate speech processing functions". |
| GSM 06.06 | "Digital cellular telecommunications system (Phase 2+); Half rate speech; ANSI-C code for the GSM half rate speech codec". |
| GSM 06.07 | "Digital cellular telecommunications system (Phase 2+); Half rate speech; Test sequences for the GSM half rate speech codec". |
| GSM 06.20 | "Digital cellular telecommunications system (Phase 2+); Half rate speech; Half rate speech transcoding". |
| GSM 06.21 | "Digital cellular telecommunications system (Phase 2+); Half rate speech; Substitution and muting of lost frames for half rate speech traffic channels". |
| GSM 06.22 | "Digital cellular telecommunications system (Phase 2+); Half rate speech; Comfort noise aspects for half rate speech traffic channels". |
| GSM 06.41 | "Digital cellular telecommunications system (Phase 2+); Half rate speech; Discontinuous Transmission (DTX) for half rate speech traffic channels". |
| GSM 06.42 | "Digital cellular telecommunications system (Phase 2+); Half rate speech; Voice Activity Detector (VAD) for half rate speech traffic channels". |

The contents of the present document is subject to continuing work within SMG and may change following formal SMG approval. Should SMG modify the contents of the present document it will be re-released with an identifying change of release date and an increase in version number as follows:

Version 6.x.y

where:

- 6 indicates Release 1997 of GSM Phase 2+
- x the second digit is incremented for all changes of substance, i.e. technical enhancements, corrections, updates, etc.
- y the third digit is incremented when editorial only changes have been incorporated in the specification.

Proposed national transposition dates	
Date of adoption of this EN:	05 June 1999
Date of latest announcement of this EN (doa):	30 September 1999
Date of latest publication of new National Standard or endorsement of this EN (dop/e):	31 March 2000
Date of withdrawal of any conflicting National Standard (dow):	31 March 2000

iTeh STANDARD PREVIEW (standards.iteh.ai)

[SIST EN 300 973 V6.0.1:2003](https://standards.iteh.ai/catalog/standards/sist/6d8b0a85-ee9-42d2-a664-f6a444e962cb/sist-en-300-973-v6-0-1-2003)

<https://standards.iteh.ai/catalog/standards/sist/6d8b0a85-ee9-42d2-a664-f6a444e962cb/sist-en-300-973-v6-0-1-2003>

1 Scope

This European Standard (EN) specifies the Voice Activity Detector (VAD) to be used in the Discontinuous Transmission (DTX) as described in GSM 06.41 [4]. It also specifies the test methods to be used to verify that a VAD implementation complies with the present document.

The requirements are mandatory on any VAD to be used either in GSM Mobile Stations (MS)s or Base Station Systems (BSS)s that utilize the half-rate GSM speech traffic channel.

2 References

The following documents contain provisions which, through reference in this text, constitute provisions of the present document.

- References are either specific (identified by date of publication, edition number, version number, etc.) or non-specific.
- For a specific reference, subsequent revisions do not apply.
- For a non-specific reference, the latest version applies.
- A non-specific reference to an ETS shall also be taken to refer to later versions published as an EN with the same number.

- [1] GSM 01.04: "Digital cellular telecommunications system (Phase 2+); Abbreviations and acronyms".
- [2] GSM 06.20: "Digital cellular telecommunications system (Phase 2+); Half rate speech; Half rate speech transcoding".
- [3] GSM 06.22: "Digital cellular telecommunications system (Phase 2+); Half rate speech; Comfort noise aspects for half rate speech traffic channels".
- [4] GSM 06.41: "Digital cellular telecommunications system (Phase 2+); Half rate speech; Discontinuous Transmission (DTX) for half rate speech traffic channels".
- [5] GSM 06.06: "Digital cellular telecommunications system (Phase 2+); Half rate speech; ANSI C code for the GSM half rate speech codec".
- [6] GSM 06.07: "Digital cellular telecommunications system (Phase 2+); Half rate speech; Test sequences for the GSM half rate speech codec".

3 Definitions, symbols and abbreviations

3.1 Definitions

For the purpose of the present document, the following definitions apply:

mobile environment: Any environment in which MSs may be used.

noise: The signal component resulting from acoustic environmental noise.

3.2 Symbols

For the purpose of the present document, the following symbols apply:

3.2.1 Variables

aav1	filter predictor values, see subclause 5.2.3
acf	the ACF vector which is calculated in the speech encoder (GSM 06.20 [2])
adaptcount	secondary hangover counter, see subclause 5.2.6
av0	averaged ACF vector, see subclause 5.2.2
av1	a previous value of av0, see subclause 5.2.2
burstcount	speech burst length counter, see subclause 5.2.7
den	denominator of left hand side of equation 8 in annex C, see subclause 5.2.5
difference	difference between consecutive values of dm, see subclause 5.2.4
dm	spectral distortion measure, see subclause 5.2.4
hangcount	primary hangover counter, see subclause 5.2.7
lagcount	number of subframes in current frame meeting periodicity criterion, see subclause 5.2.9
lastdm	previous value of dm, see subclause 5.2.4
lags	the open loop long term predictor lags for the four speech encoder subframes (GSM 06.20 [2].)
num	numerator of left hand side of equation 8 in annex C, see subclause 5.2.5
oldlagcount	previous value of lagcount, see subclause 5.2.9
prederr	fourth order short term prediction error, see subclause 5.2.5
ptch	Boolean flag indicating the presence of a periodic signal component, see subclause 5.2.9
pvad	energy in the current filtered signal frame, see subclause 5.2.1
rav1	autocorrelation vector obtained from av1, see subclause 5.2.3
rc	the first four unquantized reflection coefficients calculated in the speech encoder (GSM 06.20 [2])
rvad	autocorrelation vector of the adaptive filter predictor values, see subclause 5.2.6
smallag	difference between consecutive lag values, see subclause 5.2.9
stat	Boolean flag indicating that the frequency spectrum of the input signal is stationary, see subclause 5.2.4
thvad	adaptive primary VAD threshold, see subclause 5.2.6
tone	Boolean flag indicating the presence of an information tone, see subclause 5.2.5
vadflag	Boolean VAD decision with hangover included, see subclause 5.2.8
veryoldlagcount	previous value of oldlagcount, see subclause 5.2.9
vvad	Boolean VAD decision before hangover, see subclause 5.2.7

<https://standards.iteh.ai/catalog/standards/sist/6d8b0a85-ecf9-42d2-a664-f6a444e962cb/sist-en-300-973-v6-0-1-2003>

3.2.2 Constants

adp	number of frames of hangover for secondary VAD, see subclause 5.2.6
burstconst	minimum length of speech burst to which hangover is added, see subclause 5.2.8
dec	determines rate of decrease in adaptive threshold, see subclause 5.2.6
fac	determines steady state adaptive threshold, see subclause 5.2.6
frames	number of frames over which av0 and av1 are calculated, see subclause 5.2.2
freqth	threshold for pole frequency decision, see subclause 5.2.5
hangconst	number of frames of hangover for primary VAD, see subclause 5.2.8
inc	determines rate of increase in adaptive threshold, see subclause 5.2.6
lthresh	lag difference threshold for periodicity decision, see subclause 5.2.9
margin	determines upper limit for adaptive threshold, see subclause 5.2.6
nthresh	frame count threshold for periodicity decision, see subclause 5.2.9
plev	lower limit for adaptive threshold, see subclause 5.2.6
predth	threshold for short term prediction error, see subclause 5.2.5
pth	energy threshold, see subclause 5.2.6
thresh	decision threshold for evaluation of stat flag, subclause 5.2.4

3.2.3 Functions

+	addition
-	subtraction
*	multiplication
/	division

$ x $	absolute value of x
AND	Boolean AND
OR	Boolean OR
$\sum_{i=a}^b \text{MULT}(x(i))$	the product of the series $x(i)$ for $i=a$ to b
$\sum_{i=a}^b \text{SUM}(x(i))$	the sum of the series $x(i)$ for $i=a$ to b

3.3 Abbreviations

For the purposes of the present document the following abbreviations apply:

ACF	Autocorrelation Function
AFLAT	Autocorrelation Fixed point Lattice Technique
ANSI	American National Standards Institute
DTX	Discontinuous Transmission
LTP	Long Term Predictor
TX	Transmission
VAD	Voice Activity Detector

For abbreviations not given in this subclause see GSM 01.04 [1].

TECHNICAL STANDARD PREVIEW
(standards.iteh.ai)

4 General

SIST EN 300 973 V6.0.1:2003

The function of the VAD is to indicate whether each 20 ms frame produced by the speech encoder contains speech or not. The output is a Boolean flag (vadflag) which is used by the Transmit (TX) DTX handler defined in GSM 06.41 [4].

The present document is organized as follows:

Clause 5 describes the principles of operation of the VAD. Clause 6 provides an overview of the computational description of the VAD. The computational details necessary for the fixed point implementation of the VAD algorithm are given in the form of an American National Standards Institute (ANSI) C program contained in GSM 06.06 [5].

The verification of the VAD is based on the use of digital test sequences which are described in GSM 06.07 [6].

The performance of the VAD algorithm is characterized by the amount of audible speech clipping it introduces and the percentage activity it indicates. The characteristics for the VAD defined in the present document have been established by extensive testing under a wide range of operating conditions. The results are summarized in annex A.

5 Functional description

The purpose of this clause is to give the reader an understanding of the principles of operation of the VAD, whereas GSM 06.06 [5] contains the fixed point computational description of the VAD. In the case of discrepancy between the two descriptions, the description in GSM 06.06 [5] will prevail.

5.1 Overview and principles of operation

The function of the VAD is to distinguish between noise with speech present and noise without speech present. This is achieved by comparing the energy of a filtered version of the input signal with a threshold. The presence of speech is indicated whenever the threshold is exceeded.

The detection of speech in mobile environments is difficult due to the low speech/noise ratios which are encountered, particularly in moving vehicles. To increase the probability of detecting speech, the input signal is adaptively filtered (see subclause 5.2.1) to reduce its noise content before the voice activity decision is made (see subclause 5.2.7).

The frequency spectrum and level of the noise may vary within a given environment as well as between different environments. It is therefore necessary to adapt the input filter coefficients and energy threshold at regular intervals as described in subclause 5.2.6.

5.2 Algorithm description

The block diagram of the VAD algorithm is shown in figure 1. The individual blocks are described in the following subclauses. The global variables shown in the block diagram are described in table 1.

Table 1: Description of variables in figure 1

Var	Description
acf	The ACF vector which is calculated in the speech encoder (GSM 06.20 [2]).
av0	Averaged ACF vector.
av1	A previous value of av0.
lags	The open loop long term predictor lags for the four speech encoder subframes (GSM 06.20 [2]).
ptch	Boolean flag indicating the presence of a periodic signal component.
pvad	Energy in the current filtered signal frame.
rav1	Autocorrelation vector obtained from av1.
rc	The first four unquantized reflection coefficients calculated in the speech encoder (GSM 06.20 [2]).
rvad	Autocorrelation vector of the adaptive filter predictor values.
stat	Boolean flag indicating that the frequency spectrum of the input signal is stationary.
thvad	Adaptive primary VAD threshold.
tone	Boolean flag indicating the presence of an information tone.
vadflag	Boolean VAD decision with hangover included.
vvad	Boolean VAD decision before hangover.

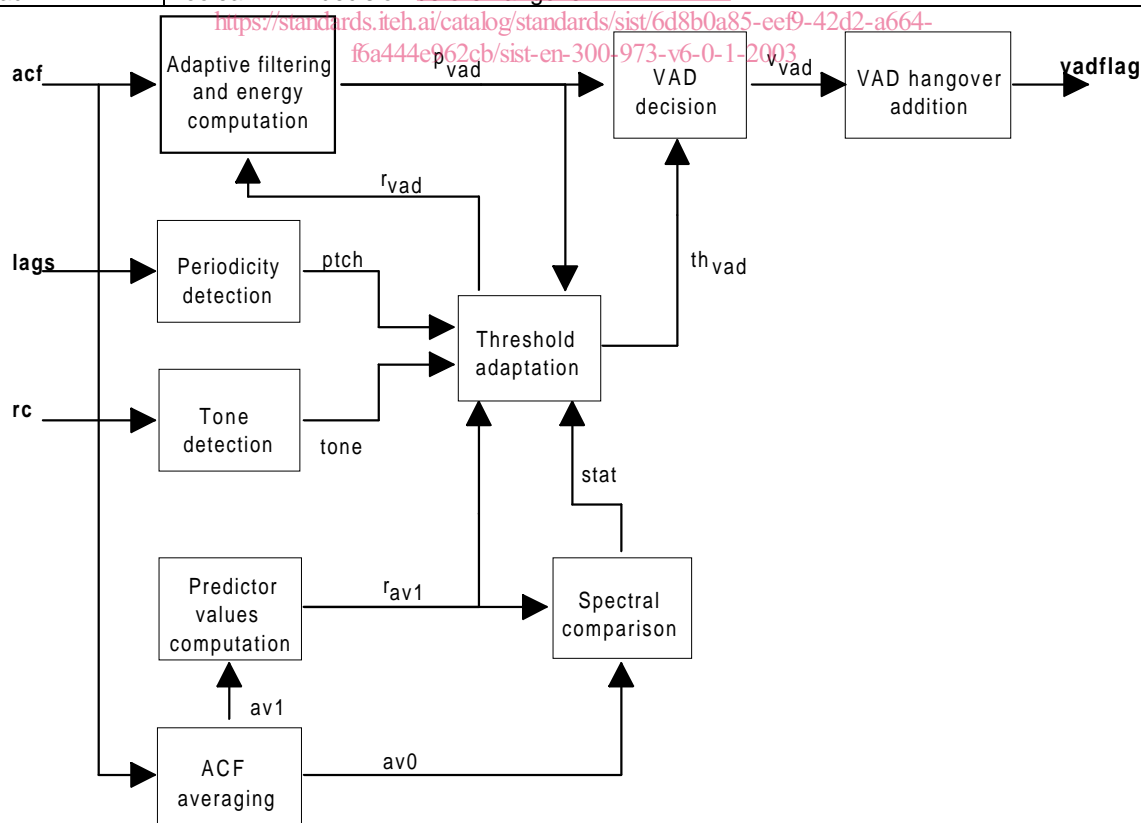


Figure 1: Functional block diagram of the VAD