



**SLOVENSKI STANDARD**  
**oSIST prEN ISO 12216:2022**  
**01-april-2022**

---

**Mala plovila - Okna, lopute, pokrovi in vrata - Zahteve za trdnost in odpornost proti vodi (ISO 12216:2020)**

Small craft - Windows, portlights, hatches, deadlights and doors - Strength and watertightness requirements (ISO 12216:2020)

**iTeh STANDARD**

**PREVIEW**

Petits navires - Fenêtres, hublots, panneaux, tapes et portes - Exigences de résistance et d'étanchéité (ISO 12216:2020)

**(standards.iteh.ai)**

**Ta slovenski standard je istoveten z: prEN ISO 12216**

<https://standards.iteh.ai/catalog/standards/sist/4e88c0e4-2c6f-4b06-8a22-ab273d318c62/osist-pren-iso-12216-2022>

**ICS:**

47.080	Čolni	Small craft
91.060.50	Vrata in okna	Doors and windows

**oSIST prEN ISO 12216:2022**

**en,fr,de**

**iTeh STANDARD  
PREVIEW  
(standards.iteh.ai)**

[oSIST prEN ISO 12216:2022](https://standards.iteh.ai/catalog/standards/sist/4e88c0e4-2c6f-4b06-8a22-ab273d318c62/osist-pren-iso-12216-2022)

<https://standards.iteh.ai/catalog/standards/sist/4e88c0e4-2c6f-4b06-8a22-ab273d318c62/osist-pren-iso-12216-2022>

INTERNATIONAL  
STANDARD

ISO  
12216

Second edition  
2020-07

---

---

**Small craft — Windows, portlights,  
hatches, deadlights and doors  
— Strength and watertightness  
requirements**

*Petits navires — Fenêtres, hublots, panneaux, tapes et portes —  
Exigences de résistance et d'étanchéité*

**PREVIEW**  
**(standards.iteh.ai)**

[oSIST prEN ISO 12216:2022](https://standards.iteh.ai/catalog/standards/sist/4e88c0e4-2c6f-4b06-8a22-ab273d318c62/osist-pren-iso-12216-2022)

[https://standards.iteh.ai/catalog/standards/sist/4e88c0e4-  
2c6f-4b06-8a22-ab273d318c62/osist-pren-iso-12216-  
2022](https://standards.iteh.ai/catalog/standards/sist/4e88c0e4-2c6f-4b06-8a22-ab273d318c62/osist-pren-iso-12216-2022)



Reference number  
ISO 12216:2020(E)

© ISO 2020

**iTeh STANDARD  
PREVIEW  
(standards.iteh.ai)**

[oSIST prEN ISO 12216:2022](https://standards.iteh.ai/catalog/standards/sist/4e88c0e4-2c6f-4b06-8a22-ab273d318c62/osist-pren-iso-12216-2022)

<https://standards.iteh.ai/catalog/standards/sist/4e88c0e4-2c6f-4b06-8a22-ab273d318c62/osist-pren-iso-12216-2022>



**COPYRIGHT PROTECTED DOCUMENT**

© ISO 2020

All rights reserved. Unless otherwise specified, or required in the context of its implementation, no part of this publication may be reproduced or utilized otherwise in any form or by any means, electronic or mechanical, including photocopying, or posting on the internet or an intranet, without prior written permission. Permission can be requested from either ISO at the address below or ISO's member body in the country of the requester.

ISO copyright office  
CP 401 • Ch. de Blandonnet 8  
CH-1214 Vernier, Geneva  
Phone: +41 22 749 01 11  
Email: [copyright@iso.org](mailto:copyright@iso.org)  
Website: [www.iso.org](http://www.iso.org)

Published in Switzerland

# Contents

	Page
<b>Foreword</b> .....	<b>v</b>
<b>1 Scope</b> .....	<b>1</b>
<b>2 Normative references</b> .....	<b>1</b>
<b>3 Terms and definitions</b> .....	<b>1</b>
3.1 General definitions of openings and their coverings.....	2
3.2 Devices covering an opening.....	2
3.3 Plate of an appliance.....	2
3.4 Specific appliances.....	3
3.5 Areas definition.....	4
3.6 Plate end-connections.....	6
3.7 Types of glass.....	6
3.8 Watertightness.....	6
3.9 Other general definitions.....	7
<b>4 General requirements</b> .....	<b>8</b>
4.1 Requirements of other International Standards.....	8
4.2 Strength of appliances.....	8
4.3 Watertightness of appliances.....	8
4.3.1 Minimum degree of watertightness.....	8
4.3.2 Additional requirements for appliances related to watertightness.....	8
<b>5 Plate materials</b> .....	<b>9</b>
5.1 General.....	9
5.2 Acrylic sheet materials.....	9
5.3 Glass.....	9
5.3.1 Restrictions of usage.....	9
<b>6 Specific requirements of appliances</b> .....	<b>9</b>
6.1 Plate end connection and location.....	9
6.1.1 Simply supported plates.....	9
6.1.2 Semi-fixed plates.....	10
6.2 Fastening requirements.....	10
6.2.1 Fastening of plates and frames.....	10
6.2.2 Fastening of semi-fixed plates.....	11
6.2.3 Fastening of glued plates.....	11
6.2.4 Stiffeners and attachments.....	11
6.3 Special requirements.....	11
6.3.1 Appliances fitted in area I.....	11
6.3.2 Appliances fitted in area IIa.....	13
6.3.3 Flush deck companionway opening sill heights.....	14
6.3.4 Sliding appliances.....	15
6.3.5 Washboards.....	16
6.3.6 Securing system.....	16
6.3.7 Deadlights.....	16
6.3.8 Multihull escape hatches.....	16
6.3.9 Prefabricated appliances.....	17
6.3.10 Appliance systems (composite appliances).....	17
<b>7 Strength assessment</b> .....	<b>17</b>
7.1 Assessment methods for appliances strength.....	17
7.2 Monolithic plates — Direct calculation methods.....	17
7.2.1 Monolithic semi-fixed plates — Direct calculation method.....	17
7.2.2 Selection of monolithic plate thickness.....	18
7.2.3 Plate aspect-ratio coefficients, $k_r$ and $k_f$ .....	19
7.2.4 Design pressure.....	20
7.2.5 Pressure reduction factor.....	20

**ISO 12216:2020(E)**

7.2.6	Curvature coefficient.....	21
7.2.7	Flexural strength and modulus of elasticity.....	21
7.2.8	Safety factor and minimum plate thickness.....	21
7.2.9	Monolithic simply supported on 2 sides — Direct calculation.....	22
7.2.10	Monolithic simply supported on 3 sides — Direct calculation.....	22
7.3	Laminated glass — Direct calculation.....	23
7.4	Advanced calculation method.....	24
7.5	Pressure test assessment method.....	24
<b>Annex A (informative) Location areas of appliances above <math>W_{LREF}</math>.....</b>		<b>25</b>
<b>Annex B (informative) Types of plate edge connection.....</b>		<b>27</b>
<b>Annex C (normative) Unsupported plate dimensions.....</b>		<b>29</b>
<b>Annex D (normative) Test methods.....</b>		<b>31</b>
<b>Annex E (normative) High-impact-resistance glass.....</b>		<b>38</b>
<b>Annex F (informative) Precalculated tables.....</b>		<b>39</b>
<b>Bibliography.....</b>		<b>69</b>

**iTeh STANDARD  
PREVIEW  
(standards.iteh.ai)**

[oSIST prEN ISO 12216:2022](https://standards.iteh.ai/catalog/standards/sist/4e88c0e4-2c6f-4b06-8a22-ab273d318c62/osist-pren-iso-12216-2022)

<https://standards.iteh.ai/catalog/standards/sist/4e88c0e4-2c6f-4b06-8a22-ab273d318c62/osist-pren-iso-12216-2022>

## Foreword

ISO (the International Organization for Standardization) is a worldwide federation of national standards bodies (ISO member bodies). The work of preparing International Standards is normally carried out through ISO technical committees. Each member body interested in a subject for which a technical committee has been established has the right to be represented on that committee. International organizations, governmental and non-governmental, in liaison with ISO, also take part in the work. ISO collaborates closely with the International Electrotechnical Commission (IEC) on all matters of electrotechnical standardization.

The procedures used to develop this document and those intended for its further maintenance are described in the ISO/IEC Directives, Part 1. In particular the different approval criteria needed for the different types of ISO documents should be noted. This document was drafted in accordance with the editorial rules of the ISO/IEC Directives, Part 2 (see [www.iso.org/directives](http://www.iso.org/directives)).

Attention is drawn to the possibility that some of the elements of this document may be the subject of patent rights. ISO shall not be held responsible for identifying any or all such patent rights. Details of any patent rights identified during the development of the document will be in the Introduction and/or on the ISO list of patent declarations received (see [www.iso.org/patents](http://www.iso.org/patents)).

Any trade name used in this document is information given for the convenience of users and does not constitute an endorsement.

For an explanation of the voluntary nature of standards, the meaning of ISO specific terms and expressions related to conformity assessment, as well as information about ISO's adherence to the World Trade Organization (WTO) principles in the Technical Barriers to Trade (TBT), see [www.iso.org/iso/foreword.html](http://www.iso.org/iso/foreword.html).

This document was prepared by Technical Committee ISO/TC 188, *Small craft*.

This second edition cancels and replaces the first edition (ISO 12216:2002), which has been technically revised.

The main changes compared to the previous edition are as follows:

- new definitions ([Clause 3](#));
- change in watertightness requirements ([4.3.1](#));
- change of size allowance for glazing in the hull in area I ([6.3.1.1](#));
- change in the requirements for the use of glass in area IIa appliances ([6.3.2](#));
- new requirements for flush deck hatches ([6.3.3](#));
- new requirements for multihull break out panels ([6.3.8](#));
- new definition and requirements for prefabricated appliances ([6.3.9](#));
- new requirements for simply supported plates ([7.2.9](#) and [7.2.10](#));
- new direct calculation method for laminated glass plates ([7.3](#));
- new advanced calculation method for strength requirements on certain types of non glazed plates ([7.4](#));
- new requirements for pressure test ([D.2.1](#));
- new requirements for watertightness test ([D.2.2](#));
- new requirement for mechanical links test ([Clause D.3](#));

## ISO 12216:2020(E)

- change to method of separation test ([D.4.3](#));
- new precalculated plate thickness tables ([Annex F](#)).

Any feedback or questions on this document should be directed to the user's national standards body. A complete listing of these bodies can be found at [www.iso.org/members.html](http://www.iso.org/members.html).

# iTeh STANDARD PREVIEW (standards.iteh.ai)

[oSIST prEN ISO 12216:2022  
https://standards.iteh.ai/catalog/standards/sist/4e88c0e4-  
2c6f-4b06-8a22-ab273d318c62/osist-pren-iso-12216-  
2022](https://standards.iteh.ai/catalog/standards/sist/4e88c0e4-2c6f-4b06-8a22-ab273d318c62/osist-pren-iso-12216-2022)



# Small craft — Windows, portlights, hatches, deadlights and doors — Strength and watertightness requirements

## 1 Scope

This document specifies technical requirements and test methods for windows, portlights, hatches, deadlights and doors on small craft with a length of hull,  $L_H$ , as defined in ISO 8666:2016, of up to 24 m. It takes into account the type of craft, its design category, and the location of the appliance.

The appliances considered in this document are only those that are critical for the craft's watertightness.

Openings and non-opening devices fitted below area I (see 3.5.2) are excluded from the scope of this document.

## 2 Normative references

The following documents are referred to in the text in such a way that some or all of their content constitutes requirements of this document. For dated references, only the edition cited applies. For undated references, the latest edition of the referenced document (including any amendments) applies.

ISO 6603-1:2000, *Plastics — Determination of puncture impact behaviour of rigid plastics — Part 1: Non-instrumented impact testing*

ISO 11336-1:2012, *Large yachts — Strength, weathertightness and watertightness of glazed openings — Part 1: Design criteria, materials, framing and testing of independent glazed openings*

ISO 11812:2020, *Small craft — Watertight cockpits and quick-draining cockpits*

ISO 12217-1:2015, *Small craft — Stability and buoyancy assessment and categorization — Part 1: Non-sailing boats of hull length greater than or equal to 6 m*

ISO 12217-2:2015, *Small craft — Stability and buoyancy assessment and categorization — Part 2: Sailing boats of hull length greater than or equal to 6 m*

ISO 12217-3:2015, *Small craft — Stability and buoyancy assessment and categorization — Part 3: Boats of hull length less than 6 m*

EN 356:1999, *Glass in building — Security glazing — Testing and classification of resistance against manual attack*

EN 1063:1999, *Glass in building — Security glazing — Testing and classification of resistance against bullet attack*

## 3 Terms and definitions

For the purposes of this document, the following terms and definitions apply.

ISO and IEC maintain terminological databases for use in standardization at the following addresses:

- ISO Online browsing platform: available at <https://www.iso.org/obp>
- IEC Electropedia: available at <http://www.electropedia.org/>

## ISO 12216:2020(E)

### 3.1 General definitions of openings and their coverings

#### 3.1.1

##### **opening**

cut-out in the shell of a craft such as in the hull or superstructures

Note 1 to entry: An opening is usually covered by a glazing or an appliance, that can be fixed or opening.

#### 3.1.2

##### **clear opening dimensions**

dimensions of the area within a structure or frame, through which objects or people may pass when the incorporated plate is disregarded

### 3.2 Devices covering an opening

#### 3.2.1

##### **appliance**

device made of a *plate* (3.3.1) and its associated framing, opening (hingeing) and fixture systems, when included, used to cover an opening in the hull, deck or superstructure of a boat; it can be fixed or openable (detachable, hinged, sliding, folding, etc.)

EXAMPLE *Windows* (3.4.1), *portlights* (3.4.2), *hatches* (3.4.3), *deadlights* (3.4.7), *doors* (3.4.6), *sliding appliances* (3.2.5), escape hatches.

#### 3.2.2

##### **fixed appliance**

non opening *appliance* (3.2.1)

#### 3.2.3

##### **opening appliance**

*appliance* (3.2.1) that can be opened

#### 3.2.4

##### **hinged appliance**

*opening appliance* (3.2.3) that is connected to its framing by hinges

#### 3.2.5

##### **sliding appliance**

*opening appliance* (3.2.3) which opens by sliding in line with its area, in any plane, where the plate either slides in a rabbet or a frame or is fixed in a sliding frame

#### 3.2.6

##### **composite appliance**

system comprising *appliances* (3.2.1) [e.g. *portlights* (3.4.2)] situated within *plates* (3.3.1) that are themselves affixed to the vessel by direct bonding or mechanical fastening

### 3.3 Plate of an appliance

#### 3.3.1

##### **plate**

sheet of material, transparent or not, that is attached to the boat structure either directly or indirectly, fixed or opening

#### 3.3.2

##### **stiffened plate**

*plate* (3.3.1) with associated structural stiffeners

#### 3.3.3

##### **non-stiffened plate**

*plate* (3.3.1) not equipped with associated structural stiffeners

iTeh STANDARD  
PREVIEW  
(standards.iteh.ai)

oSIST prEN ISO 12216:2022

<https://standards.iteh.ai/catalog/standards/sist/4e88c0e4-2c6f-4b06-8a22-ab273d318c62/osist-pren-iso-12216-2022>

**3.3.4****unsupported dimensions of a plate**

clear dimensions between the inner edges of supports bearing the *plate* (3.3.1)

Note 1 to entry: These dimensions can be different from the *opening* (3.1.1) dimensions in the shell, because a plate can be fixed in either a fixed or opening framing.

Note 2 to entry: See [Annexes B](#) and [C](#).

**3.3.5****glazing**

*plate* (3.3.1) that is transparent or translucent

**3.3.6****sandwich plate**

*plate* (3.3.1) having an inner core covered on each side by a working skin

**3.4 Specific appliances****3.4.1****window**

glazed *appliance* (3.2.1)

**3.4.2****portlight**

framed *window* (3.4.1), fixed or opening, located in the hull or transom below deck which, where openable, is hinged and opens inwards

**3.4.3****hatch**

*opening appliance* (3.2.3), glazed or not glazed, used for access, lighting, inspection, ventilation or reach, located on any part of the shell

**3.4.4****fire escape hatch  
escape hatch**

*hatch* (3.4.3) intended or dedicated to provide an exit for people and designated means of escape

Note 1 to entry: See ISO 9094:2015 for definitions and requirements.

**3.4.5****multihull escape hatch**

*appliance* (3.2.1) allowing a viable means of escape in the event of inversion for multihulls vulnerable to inversion

Note 1 to entry: See ISO 12217-1:2015, ISO 12217-2:2015 and ISO 12217-3:2015.

Note 2 to entry: As this appliance is not normally totally immersed in the upright and inverted position, it is usually fitted below deck level on the hull side, nacelle or crossarm bottom, or transom.

**3.4.6****door**

*opening appliance* (3.2.3) up to 45° from the vertical intended to close a companionway *opening* (3.1.1)

EXAMPLE Door open at sea, door not open at sea, hinged door, sliding door.

**3.4.7****deadlight**

secondary watertight *appliance* (3.2.1), permanently attached or separate and fitted to the inside of a *window* (3.4.1)

## ISO 12216:2020(E)

## 3.4.8

**washboard**

*opening appliance* (3.2.3) for companionway *openings* (3.1.1) made of one or more mobile board(s) that, when closed, are stacked one on top of each other

Note 1 to entry: This device is frequently found on sailing monohulls.

Note 2 to entry: Boards are added as the weather worsens to constitute a higher sill.

## 3.5 Areas definition

## 3.5.1

**appliance location area**

area of the watertight envelope of the craft where the *appliance* (3.2.1) is fitted

Note 1 to entry: See [Annex A](#) for sketches showing examples of appliance location areas.

## 3.5.2

**area I**

lower hull sides

part of the hull sides (and transom) situated above *reference waterline* (3.9.5), i.e. up the sheerline to its intersection with the weather deck (for decked craft), or the upper edge of the hull (for open craft or partially decked craft), but only to the following upper boundary:

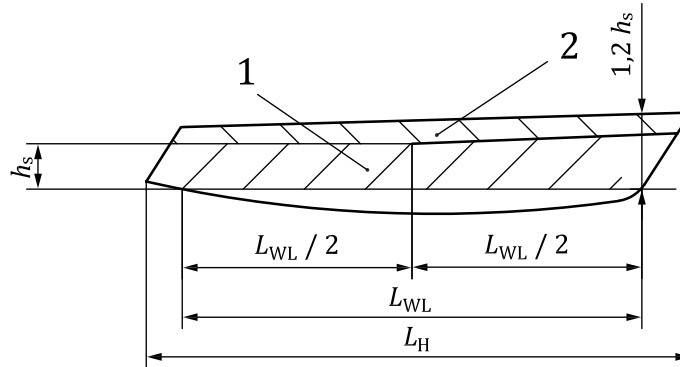
- a horizontal line located at the height  $h_S$  above waterline in the rear half of the waterline (see [Figure 1](#));
- a sloped line having a height  $h_S$  at mid waterline, and a height  $1,2h_S$  at the front end of the waterline, with
  - $h_S = L_H/12$  for sailing monohulls,
  - $h_S = L_H/17$  for motor boats, sailing catamarans and central hull of sailing trimarans

where  $h_S$  is limited as per [Table 1](#)

**Table 1 —  $h_S$  limits of area 1**

Design category	$h_S$ higher limit	$h_S$ lower limit
A	No limit	0,5 m
B	No limit	0,4 m
C	0,75 m	0,3 m
D	0,40 m	0,2 m

Note 1 to entry: The outer hulls of sailing trimarans are considered to be entirely in area I.

**Key**

- 1 area I  
2 area II b

**Figure 1 — Limits of areas I and II b****3.5.3****area II a**

area, other than *area I* (3.5.2), where persons are liable to walk or step, such as decks, superstructures, cockpit soles, at an inclination of less than 25° to the horizontal in a longitudinal direction, and at an inclination of less than 50° to the horizontal in the transversal direction respectively for sailing monohulls, or 25° for multihulls.

**3.5.4****area II b**

upper hull side

areas from the hull sides (and transom) not belonging to *area I* (3.5.2)

Note 1 to entry: The following areas may be included if they correspond to the definition:

- rear faces of transverse girders of multihulls when located above the waterline.

Note 2 to entry: Areas on which people may stand or step, even inadvertently, are part of *area II a* (3.5.3).

EXAMPLE 1 Top of sailboat coachroof on which one may stand or attend to sails.

Note 3 to entry: Superstructure areas on which people cannot normally stand or step, are not part of *area II a*, but *area III* (3.5.5).

EXAMPLE 2 Top of motorboat wheelhouse is an area on which people cannot normally stand or step.

**3.5.5****area III**

deck and superstructures exposed areas

areas, other than *area I* (3.5.2), *area II a* (3.5.3) or *area II b* (3.5.4), exposed to the direct impact of sea or slamming waves coming from front and side

**3.5.6****area IV**

deck and superstructure protected areas

parts of *area III* (3.5.5) protected from the direct impact of sea or slamming waves coming from front and side, and not located within  $L_H/3$  from the bow

EXAMPLE Cockpits, rear and side faces of superstructures.

Note 1 to entry: Areas other than the ones given in the example can be included in *area IV*. The protection against impact from the sea is the responsibility of the manufacturer.

## ISO 12216:2020(E)

### 3.6 Plate end-connections

See [Annex B](#) for sketches showing examples of types of plate end-connection.

#### 3.6.1

##### **semi-fixed plate**

SF plate

*plate* ([3.3.1](#)) fixed to restrict deflection and to prevent lateral movement at its boundaries

EXAMPLE Unframed or framed plate, if bolted and/or glued.

#### 3.6.2

##### **simply supported plate**

SS plate

*plate* ([3.3.1](#)) that can deflect at its boundaries and/or perform a lateral movement

EXAMPLE Unframed plate, whether hinged or sliding, e.g. frameless sliding windows and *hatches* ([3.4.3](#)), including companionway sliding hatches, companionway ladderboards, frameless hinged windows.

#### 3.6.3

##### **flexibly connected plate**

*simply supported plate* ([3.6.2](#)) where the connection is achieved by an elastic support around the perimeter of the plate

Note 1 to entry: A car windscreen joint, shown in [Figure B.3](#), is a flexibly connected plate where there is no overlap between the plate and its support, hence the plate can be pushed in the boat by the outside pressure.

### 3.7 Types of glass

#### 3.7.1

##### **annealed glass**

sheet glass

glass as delivered directly from the fabrication cycle without subsequent treatment

#### 3.7.2

##### **thermally tempered glass**

TG glass

glass where better mechanical properties are obtained by thermal treatment

#### 3.7.3

##### **chemically reinforced glass**

glass where better mechanical properties are obtained by chemical treatment

#### 3.7.4

##### **monolithic glass**

glass consisting of one ply

#### 3.7.5

##### **laminated glass**

multi-layer sheet having glass as outer plies, where the inside plies are made of plastic inter-layers, plastic sheets, glass, or other glazing material

### 3.8 Watertightness

#### 3.8.1

##### **watertightness**

<appliance> capacity of an appliance or a fitting to prevent ingress of water inside the boat

ITeH STANDARD  
PREVIEW  
(standards.iteh.ai)

oSIST prEN ISO 12216:2022  
<https://standards.iteh.ai/catalog/standards/sist/4e88c0e4-2c6f-4b06-8a22-ab273d318c62/osist-pren-iso-12216-2022>

**3.8.2****degree of watertightness**

capacity of an appliance or fitting to resist ingress of water, according to the conditions of exposure to water

Note 1 to entry: See [Table 2](#).

**Table 2 — Definitions of the degrees of watertightness**

Degree of watertightness	Definition
1 (waterproof)	Constructed to withstand continuous immersion
2 (watertight)	Constructed to prevent ingress of water when tested according to <a href="#">D.2</a>
3 (weathertight)	Constructed to minimize seepage when tested according to <a href="#">D.2.2.1</a>
4 (spraytight)	Protection against water drops falling at an angle of up to 15° from the vertical according to <a href="#">D.2.2.2</a>

**3.9 Other general definitions****3.9.1****craft****small craft**

recreational boat, and other watercraft using similar equipment, of up to 24 m length of hull ( $L_H$ )

Note 1 to entry: The length of hull is defined in ISO 8666:2016.

**3.9.2****design category**

description of the sea and wind conditions for which a boat is assessed to be suitable

Note 1 to entry: See also ISO 12217-1:2015.

**3.9.3****sailing boat**

<https://standards.iteh.ai/catalog/standards/sist/4e88c0e4-2c6f-4b06-8a22-ab273d318c62/osist-pren-iso-12216-craft> (3.9.1) for which the primary means of propulsion is by wind power

Note 1 to entry: See also ISO 8666:2016.

**3.9.4****motor boat**

non-sailing *craft* (3.9.1) upon which the main propulsion system is a propulsion engine

**3.9.5****reference waterline**

$W_{L\_REF}$

level of the water on the hull in the fully loaded, ready-for-use condition

Note 1 to entry: The fully loaded, ready-for-use condition is defined in ISO 8666:2016.

**3.9.6****prefabricated appliance**

component that is commercially available and has been type tested to conform to certain requirements and has been marked as such