



Designation: F1802 – 04(Reapproved 2010)

## Standard Test Method for Performance Testing of Excess Flow Valves<sup>1</sup>

This standard is issued under the fixed designation F1802; the number immediately following the designation indicates the year of original adoption or, in the case of revision, the year of last revision. A number in parentheses indicates the year of last reapproval. A superscript epsilon ( $\epsilon$ ) indicates an editorial change since the last revision or reapproval.

### 1. Scope

1.1 This test method covers a standardized method to determine the performance of excess flow valves (EFVs) designed to limit flow or stop flow in thermoplastic natural gas service lines.<sup>2</sup>

1.2 All tests are intended to be performed using air as the test fluid. Unless otherwise stated, all flow rates are reported in standard cubic feet per hour of 0.6 relative density natural gas.

1.3 The test method recognizes two types of EFV. One type, an excess flow valve-bypass (EFVB), allows a small amount of gas to bleed through (bypass) after it has tripped, usually as a means of automatically resetting the device. The second type, an excess flow valve-non bypass (EFVNB), is intended to trip shut forming an essentially gas tight seal.

1.4 The performance characteristics covered in this test method include flow at trip point, pressure drop across the EFV, bypass flow rate of the EFVB or leak rate through the EFVNB after trip, and verification that the EFV can be reset.

1.4.1 Gas distribution systems may contain condensates and particulates such as organic matter, sand, dirt, and iron compounds. Field experience has shown that the operating characteristics of some EFVs may be affected by accumulations of these materials. The tests of Section 11 were developed to provide a simple, inexpensive, reproducible test that quantifies the effect, if any, of a uniform coating of kerosene and of kerosene contaminated with a specified amount of ferric oxide powder on an EFV's operating characteristics.

1.5 Excess flow valves covered by this test method will normally have the following characteristics: a pressure rating of up to 125 psig (0.86 MPa); a trip flow of between 200 and

2500 ft<sup>3</sup>/h (5.66 and 70.8 m<sup>3</sup>/h) at 10 psig (0.07 MPa); a minimum temperature rating of 0°F (–18°C), and a maximum temperature rating of 100°F (38°C).

1.6 The EFVs covered by this test method shall be constructed to fit piping systems no smaller than ½ CTS and no larger than 1¼ IPS, including both pipe and tubing sizes.

1.7 Tests will be performed at 67 ± 10°F (19.4 ± 5.5°C). Alternative optional test temperatures are 100 ± 10°F (37.7 ± 5.5°C) and 0 ± 10°F (–18 ± 5.5°C). All flow rates must be corrected to standard conditions.

1.8 This test method was written for EFVs installed in thermoplastic piping systems. However, it is expected that the test method may also be used for similar devices in other piping systems.

1.9 The values stated in inch-pound units are to be regarded as standard. The values given in parentheses are mathematical conversions to SI units that are provided for information only and are not considered standard.

1.10 *This standard does not purport to address all of the safety concerns, if any, associated with its use. It is the responsibility of the user of this standard to establish appropriate safety and health practices and determine the applicability of regulatory limitations prior to use. For specific precautions, see Section 8.*

### 2. Referenced Documents

2.1 *ASTM Standards:*<sup>3</sup>

[D1600 Terminology for Abbreviated Terms Relating to Plastics](#)

[F412 Terminology Relating to Plastic Piping Systems](#)

2.2 *ANSI Standard:*

[B31.8 Gas Transmission and Distribution Piping Systems](#)<sup>4</sup>

<sup>1</sup> This test method is under the jurisdiction of ASTM Committee F17 on Plastic Piping Systems and is the direct responsibility of Subcommittee F17.40 on Test Methods.

Current edition approved Aug. 1, 2010. Published November 2010. Originally approved in 1995 as PS 13–95. Last previous edition approved in 2004 as F1804–04. DOI: 10.1520/F1802-04R10.

<sup>2</sup> This contamination test procedure may be utilized to determine the effect, if any, of contaminants from a specific gas distribution system on the operational characteristics of an EFV under consideration for use in that system. Condensates, oils and particulates removed from that distribution system could be substituted for kerosene and iron oxide. Results obtained from using reagents or contaminants other than those specified in this test method must not be used in comparison with results obtained using the reagents specified in this test method.

<sup>3</sup> For referenced ASTM standards, visit the ASTM website, [www.astm.org](http://www.astm.org), or contact ASTM Customer Service at [service@astm.org](mailto:service@astm.org). For *Annual Book of ASTM Standards* volume information, refer to the standard's Document Summary page on the ASTM website.

<sup>4</sup> Available from American National Standards Institute (ANSI), 25 W. 43rd St., 4th Floor, New York, NY 10036. Available from American National Standards Institute (ANSI), 25 W. 43rd St., 4th Floor, New York, NY 10036, <http://www.ansi.org>.

2.3 Federal Specification:  
DOT Part 192 Title 49 Code of Federal Regulations<sup>5</sup>

3. Terminology

3.1 Definitions:

3.1.1 General—Definitions are in accordance with Terminology F412, unless otherwise specified. Abbreviations are in accordance with Terminology D1600.

3.1.2 The gas industry terminology used in this test method is in accordance with ANSI B31.8 or DOT Part 192 Title 49, unless otherwise indicated.

3.2 Definitions of Terms Specific to This Standard:

3.2.1 bypass flow, *n*—the flow through an EFVB after it has been activated or tripped.

3.2.2 excess flow valve (EFV), *n*—a device installed in a natural gas service line having the ability to automatically stop or limit the flow of gas in the event that the flow in the service line exceeds a predetermined level.

3.2.2.1 excess flow valve-bypass (EFVB), *n*—an EFV designed to limit the flow of gas upon closure to a small predetermined level. The EFVBs reset automatically, once the service line downstream is made gas tight and pressure is equalized across the valve.

3.2.2.2 excess flow valve-non bypass (EFVNB), *n*—an EFV which is designed to stop the flow of gas upon closure. The EFVNBs must be manually reset.

3.2.3 leak rate, *n*—the flow of test fluid passing through an EFVNB after it has been activated or tripped.

3.2.4 Piezometer ring, *n*—a device installed at a pressure measurement point in a flowing gas stream intended to eliminate the effect of the flowing gas on the measurement device. See Appendix X1.

3.2.5 pipe, *n*—refers to both pipe and tubing.

3.2.6 standard conditions, *n*—for gas flow conversion, 0.6 relative density natural gas at 14.7 psia (0.1 MPa) and 60°F (16.6 °C).

3.2.7 trip, *n*—activation of the mechanism of an EFV to stop or limit the flow of natural gas in the service line.

3.2.8 trip flow, *n*—the flow passing through an EFV required to cause its activation to stop or limit flow.

4. Summary of Test Method

4.1 For all tests, air is intended to be the test fluid. All flows are given in cubic feet per hour of 0.6 relative density natural gas, unless otherwise specified. All tests are to be performed at 67 ± 10°F (19.4 ± 5.5°C), with alternative test temperatures of 0 and 100°F (-17.7 and 37.7°C). All flow rates must be corrected to standard conditions using the temperature of the air flow measured just upstream of the flowmeter (T<sub>3</sub>) in Fig. 1.

4.2 The EFV is installed in the standardized test apparatus shown in Fig. 1. This apparatus provides regulated inlet pressure, pressure measurement at specified locations, temperature measurement, flow measurement, and flow control. Four discrete tests are performed on each sample, as follows:

<sup>5</sup> Available from Superintendent of Documents, U.S. Government Printing Office, 732 N. Capitol Street, NW, Washington, DC 20402.

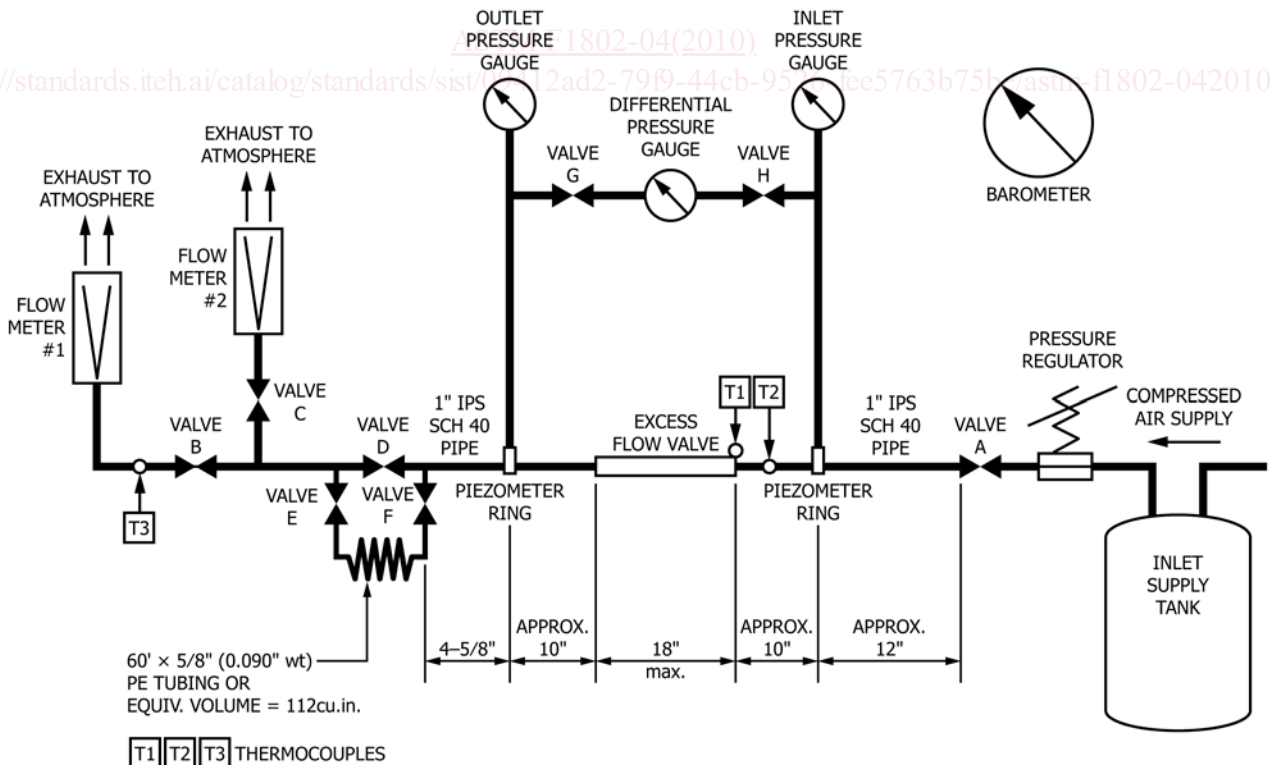


FIG. 1 Test Apparatus For Excess Flow Valves

4.2.1 *Trip Flow Rate*—The EFV is installed in the test apparatus and the flow control valve is slowly opened. At the trip point, the inlet pressure and flow rate are recorded.

4.2.2 *Bypass or Leak Rate*—After completion of trip flow rate test, the flow past the tripped device is measured on Flowmeter 2. For an EFVB, this flow is the bypass flow. For an EFVNB, this flow is the leak rate.

4.2.3 *Pressure Drop at Flow Rates Less than Closure*—after setting the inlet pressure to the desired value, pressure drop measurements shall be taken at each of the following flow rates that are less than the valve's minimum closure flow rate: 100, 200, 300, 400, 500, 750, 1000, 1250, and 1500 SCFH (2.8, 5.6, 8.5, 11.32, 14.2, 21.24, 28.3, 35.4, and 42.5 M<sup>3</sup>/h).

4.2.4 *Reset*—Following the manufacturer's instructions, verify that the EFV can be reset.

## 5. Significance and Use

5.1 This test method is intended to be used for the evaluation of EFVs manufactured for use on residential and small commercial thermoplastic natural gas service lines. Possible applications of the test include product design and quality control testing by a manufacturer and product acceptance testing by a natural gas utility.

5.2 The user of this test method should be aware that the flows and pressures measured in the test apparatus may not correlate well with those measured in a field installation. Therefore, the user should conduct sufficient tests to ensure that any specific EFV will carry out its intended function in the actual field installation used.

## 6. Apparatus

6.1 *Test Apparatus*, (See Fig. 1) consisting of a compressed air supply, valves, flowmeters, Piezometer rings located at each pressure test point, pressure gages, and thermocouples.

6.1.1 The size and capabilities of the test system should be selected to meet the needs of the application. A test system for EFVs of one size and a single pressure range may be much less sophisticated than one designed for a wide range of sizes and multiple operating pressure ranges.

### 6.2 Compressed Air Supply System:

6.2.1 The air supply system shall be able to provide clean dry air at the required test temperature for a time sufficient to obtain a test data point at the highest test pressure and at the maximum flow rate of the EFV being tested. Such a requirement may be met either by a low-volume compressor and a large pressure vessel or by a high-volume compressor and a smaller pressure vessel.

6.2.2 This test method is intended for maximum air flows up to 2500 ft<sup>3</sup>/h (70.8 m<sup>3</sup>/h). However, for many applications, a nominal requirement would be for an air flow of 1000 ft<sup>3</sup>/h (28.32 m<sup>3</sup>/h) at a pressure of 100 psig (0.7 MPa) for a period of 60 s.

### 6.3 Piezometer Rings:

6.3.1 A Piezometer ring shall be used at each pressure test point as shown in Fig. 1.

6.3.2 Piezometer rings are designed to provide a flow-independent measurement of the pressure in a pipe. They are

essential in pipes with flowing gas in them. Appendix XI shows the dimensions for construction of a Piezometer ring.

### 6.4 Pressure and Differential Pressure Gages:

6.4.1 Each air pressure gage or differential pressure gage shall measure the range of pressures at its location in the test apparatus to an accuracy within  $\pm 2\%$ .

6.4.2 Differential pressure gages shall be rated for pressures above the maximum encountered in the application.

NOTE 1—Do not use “snubs” on pressure gages.

### 6.5 Flowmeters:

6.5.1 Each flowmeter shall measure the range of flows at its location in the test apparatus to an accuracy within  $\pm 2\%$ , traceable to the National Institute of Standards and Technology. Note that flowmeter accuracy is usually expressed as a percent of the full scale reading. Therefore, to maintain accuracy it is generally advisable to operate the meter at as high a flow as possible.

6.5.2 Each flowmeter shall have manufacturer supplied correction factors for conversion of air flow rates measured at the metering pressure and temperature to corrected flow rates of 0.6 relative density natural gas at standard conditions. Some users have found it convenient to use flowmeters calibrated to measure air, but that indicate flow rates for natural gas.

6.5.3 Flowmeters shall not generate pressure or flow fluctuations in the flowing air stream that could adversely affect either the measurement of these values or the operation of the EFV.

6.5.4 Flowmeters shall be easy to clean and to keep clean.

6.5.5 *Flow Control Valve B*—This valve, as it is moved from full closed to full open, shall be capable of producing a uniformly increasing air flow. An NPS 1 valve such as a full port globe or gate valve or automated flow device have been found satisfactory.

6.5.6 *Inlet Valve A, Bypass Valves D, E, F, and Flow Control Valve C*—These shall be full port NPS 1 valves.

6.6 *Piping*—Using Schedule 40, NPS 1 steel for inlet and outlet piping and associated fittings for the EFV.

6.7 *Thermocouple*—Three thermocouples are required and shall measure temperature to an accuracy of  $\pm 3^\circ\text{F}$  ( $1.7^\circ\text{C}$ ). One shall be installed so as to measure the temperature of the EFV being tested. Two shall be installed in the flowing air stream to measure the temperature immediately upstream of Flowmeter 1, and immediately upstream of the EFV under test.

6.8 *Temperature Control*—The apparatus to control test temperature shall be such that the temperature of the EFV (T1) and of the air flow measured by the thermocouple upstream of the flowmeter (T3) shall be within  $\pm 10^\circ\text{F}$  of  $67^\circ\text{F}$  ( $5.5^\circ\text{C}$  or  $19.4^\circ\text{C}$ ). For testing at  $0^\circ\text{F}$  ( $-17.7^\circ\text{C}$ ) and at  $100^\circ\text{F}$  ( $37.7^\circ\text{C}$ ), the temperature of the EFV (T1) shall be within  $\pm 10^\circ\text{F}$  ( $5.5^\circ\text{C}$ ) of the test temperature. The test apparatus and test EFV shall be insulated as appropriate so as to maintain the test temperature.

6.9 *Reset Volume*—A 60 ft (18.28 m) long coil of  $\frac{1}{2}$  CTS 0.090 in. ( $\frac{2}{3}$  mm) wall PE tubing or pipe with an equivalent volume of 112 in.<sup>3</sup> (1,835 cm<sup>3</sup>). The inside coil radius shall not be less than 16 in. (406.4 mm) (minimum bend radius = 25 times the outside tube diameter).