
**Essential oil of aniseed (*Pimpinella
anisum* L.)**

Huile essentielle d'anis vert (Pimpinella anisum L.)

**iTeh STANDARD PREVIEW
(standards.iteh.ai)**

[ISO 3475:2020](https://standards.iteh.ai/catalog/standards/sist/046fe35-9ce9-4462-958c-2ef5306eb421/iso-3475-2020)

<https://standards.iteh.ai/catalog/standards/sist/046fe35-9ce9-4462-958c-2ef5306eb421/iso-3475-2020>



iTeh STANDARD PREVIEW
(standards.iteh.ai)

[ISO 3475:2020](https://standards.iteh.ai/catalog/standards/sist/046fe35-9ce9-4462-958c-2ef5306eb421/iso-3475-2020)

<https://standards.iteh.ai/catalog/standards/sist/046fe35-9ce9-4462-958c-2ef5306eb421/iso-3475-2020>



COPYRIGHT PROTECTED DOCUMENT

© ISO 2020

All rights reserved. Unless otherwise specified, or required in the context of its implementation, no part of this publication may be reproduced or utilized otherwise in any form or by any means, electronic or mechanical, including photocopying, or posting on the internet or an intranet, without prior written permission. Permission can be requested from either ISO at the address below or ISO's member body in the country of the requester.

ISO copyright office
CP 401 • Ch. de Blandonnet 8
CH-1214 Vernier, Geneva
Phone: +41 22 749 01 11
Fax: +41 22 749 09 47
Email: copyright@iso.org
Website: www.iso.org

Published in Switzerland

Contents

Page

Foreword	iv
1 Scope	1
2 Normative references	1
3 Terms and definitions	1
4 Requirements	1
4.1 General requirements	1
4.2 Chromatographic profile	2
5 Flashpoint	2
6 Sampling	2
7 Packaging, labelling, marking and storage	2
Annex A (informative) Typical chromatograms of the analysis by gas chromatography of the essential oil of aniseed (<i>Pimpinella anisum</i> L.)	3
Annex B (informative) Flashpoint	6
Bibliography	7

iTeh STANDARD PREVIEW (standards.iteh.ai)

[ISO 3475:2020](https://standards.iteh.ai/catalog/standards/sist/046fe35-9ce9-4462-958c-2ef5306eb421/iso-3475-2020)

<https://standards.iteh.ai/catalog/standards/sist/046fe35-9ce9-4462-958c-2ef5306eb421/iso-3475-2020>

Foreword

ISO (the International Organization for Standardization) is a worldwide federation of national standards bodies (ISO member bodies). The work of preparing International Standards is normally carried out through ISO technical committees. Each member body interested in a subject for which a technical committee has been established has the right to be represented on that committee. International organizations, governmental and non-governmental, in liaison with ISO, also take part in the work. ISO collaborates closely with the International Electrotechnical Commission (IEC) on all matters of electrotechnical standardization.

The procedures used to develop this document and those intended for its further maintenance are described in the ISO/IEC Directives, Part 1. In particular, the different approval criteria needed for the different types of ISO documents should be noted. This document was drafted in accordance with the editorial rules of the ISO/IEC Directives, Part 2 (see www.iso.org/directives).

Attention is drawn to the possibility that some of the elements of this document may be the subject of patent rights. ISO shall not be held responsible for identifying any or all such patent rights. Details of any patent rights identified during the development of the document will be in the Introduction and/or on the ISO list of patent declarations received (see www.iso.org/patents).

Any trade name used in this document is information given for the convenience of users and does not constitute an endorsement.

For an explanation of the voluntary nature of standards, the meaning of ISO specific terms and expressions related to conformity assessment, as well as information about ISO's adherence to the World Trade Organization (WTO) principles in the Technical Barriers to Trade (TBT), see www.iso.org/iso/foreword.html.

This document was prepared by Technical Committee ISO/TC 54, *Essential oils*.

This third edition cancels and replaces the second edition (ISO 3475:2002), which has been technically revised. The main changes to the previous edition are as follows:

- the title has been changed;
- the structure of the standard has been revised;
- in [Table 1](#), a footnote regarding the appearance has been added;
- in [Table 1](#), “when liquid” has been removed from the colour requirements;
- in [Table 2](#), the range of Cis-Anethole has been extended;
- editorial corrections have been made.

Any feedback or questions on this document should be directed to the user's national standards body. A complete listing of these bodies can be found at www.iso.org/members.html.

Essential oil of aniseed (*Pimpinella anisum* L.)

1 Scope

This document specifies certain characteristics of the essential oil of aniseed (*Pimpinella anisum* L.), with a view to facilitating the assessment of its quality.

2 Normative references

The following documents are referred to in the text in such a way that some or all of their content constitutes requirements of this document. For dated references, only the edition cited applies. For undated references, the latest edition of the referenced document (including any amendments) applies.

ISO/TS 210, *Essential oils — General rules for packaging, conditioning and storage*

ISO/TS 211, *Essential oils — General rules for labelling and marking of containers*

ISO 212, *Essential oils — Sampling*

ISO 279, *Essential oils — Determination of relative density at 20 degrees C — Reference method*

ISO 280, *Essential oils — Determination of refractive index*

ISO 592, *Essential oils — Determination of optical rotation*

ISO 875, *Essential oils — Evaluation of miscibility in ethanol*

ISO 1041, *Essential oils — Determination of freezing point*

ISO 11024 (all parts), *Essential oils — General guidance on chromatographic profiles*

3 Terms and definitions

For the purposes of this document, the following terms and definitions apply.

ISO and IEC maintain terminological databases for use in standardization at the following addresses:

- ISO Online browsing platform: available at <https://www.iso.org/obp>
- IEC Electropedia: available at <http://www.electropedia.org/>

3.1

essential oil of aniseed

essential oil obtained by steam distillation of the fruits of *Pimpinella anisum* L., of the Apiaceae family

Note 1 to entry: For information on CAS number, see ISO/TR 21092.

4 Requirements

4.1 General requirements

Essential oil of aniseed (*Pimpinella anisum* L.) shall meet the requirements as given in [Table 1](#).

Table 1 — Requirements for the essential oil of aniseed (*Pimpinella anisum* L.)

Characteristic	Requirements	ISO test method
Appearance	Clear liquid or crystalline mass ^a	—
Colour	Colourless to pale yellow, sometimes slightly green	—
Odour	Characteristic, recalling that of anethole	—
Relative density at 20 °C, d_{20}^{20}	0,980 to 0,990	ISO 279
Refractive index at 20 °C	1,552 to 1,561	ISO 280
Optical rotation	Between -2° and +2°	ISO 592
Miscibility in ethanol 90 % (volume fraction), at 20 °C	The solubility in a volume fraction of 90 % ethanol shall be one volume in three volumes to give a clear solution	ISO 875
Freezing point	+15 °C to +19,5 °C	ISO 1041

^a Due to the freezing point, the appearance could be crystalline mass depending on the temperature at which it is observed.

4.2 Chromatographic profile

Carry out the analysis of the essential oil by gas chromatography. Determine the chromatographic profile in accordance with the ISO 11024 series. Identify in the chromatogram obtained the representative and characteristic components shown in [Table 2](#). The proportions of these components, indicated by the integrator, shall be as shown in [Table 2](#). This constitutes the chromatographic profile of the essential oil.

Table 2 — Chromatographic profile
(standards.iteh.ai)

Component	Min.	Max.
	%	%
Methyl chavicol (Estragole)	0,5	3,0
<i>cis</i> -Anethole	0,1	0,6
<i>p</i> -Anisic aldehyde	0,1	1,4
<i>trans</i> -Anethole	87,0	94,0
γ -Himachalene	1,0	5,0
Pseudoisoeugenyl 2-methylbutyrate	0,3	2,0

NOTE The chromatographic profile is normative, contrary to the typical chromatograms given for information in [Annex A](#), see [Figures A.1](#) and [A.2](#).

5 Flashpoint

Information on the flashpoint is given in [Annex B](#).

6 Sampling

Sampling shall be performed in accordance with ISO 212. The minimum volume of the test sample is 50 ml.

NOTE The volume allows each of the tests specified in this document to be carried out at least once.

7 Packaging, labelling, marking and storage

These items shall be in accordance with ISO/TS 210 and ISO/TS 211.

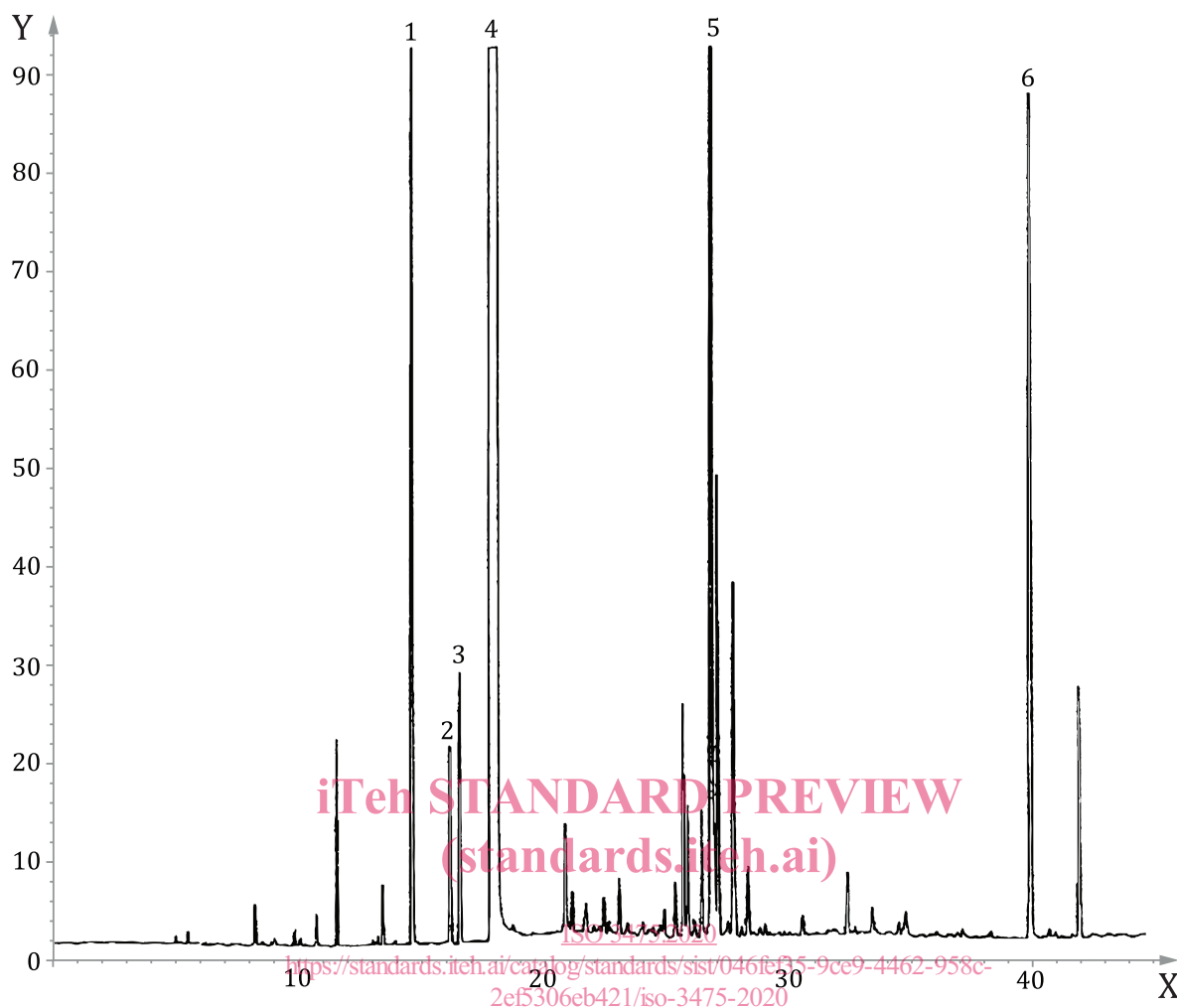
Annex A
(informative)

**Typical chromatograms of the analysis by gas chromatography of
the essential oil of aniseed (*Pimpinella anisum* L.)**

iTeh STANDARD PREVIEW
(standards.iteh.ai)

[ISO 3475:2020](https://standards.iteh.ai/catalog/standards/sist/046fe35-9ce9-4462-958c-2ef5306eb421/iso-3475-2020)

<https://standards.iteh.ai/catalog/standards/sist/046fe35-9ce9-4462-958c-2ef5306eb421/iso-3475-2020>

**Peak identification**

- 1 methyl chavicol (Estragole)
- 2 *p*-Anisic aldehyde
- 3 *cis*-Anethole
- 4 *trans*-Anethole
- 5 γ -Himachalene
- 6 Pseudoisoeugenyl 2-methylbutyrate

Key

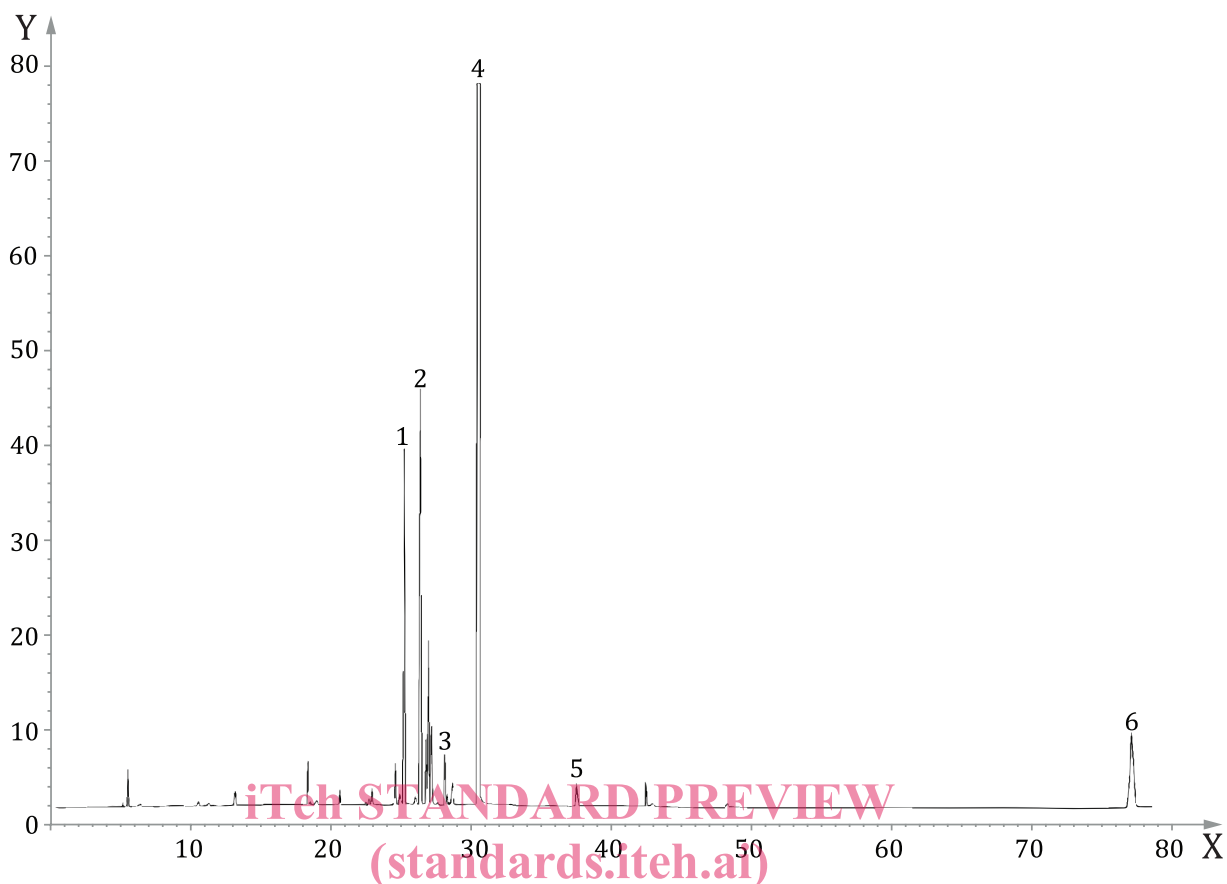
- Y signal intensity (pA)
X time (min)

Operating conditions

Column: fused silica capillary; length 60 m; internal diameter 0,25 mm
 Stationary phase: poly(dimethylsiloxane) (SPB-1®)¹⁾
 Film thickness: 0,25 μ m
 Oven temperature: temperature programming from 100 °C to 260 °C at a rate of 3 °C/min
 Injector temperature: 280 °C
 Detector temperature: 310 °C
 Detector: flame ionization type
 Carrier gas: nitrogen
 Volume injected: 0,6 μ l
 Carrier gas flow rate: 1 ml/min
 Split ratio: 1/80

¹⁾ SPB-1 is an example of a suitable product available commercially. This information is given for the convenience of users of this document and does not constitute an endorsement by ISO of this product.

Figure A.1 — Typical chromatogram taken on an apolar column

**Peak identification**

- 1 methyl chavicol (Estragole)
- 2 γ -Himachalene
- 3 *cis*-Anethole
- 4 *trans*-Anethole
- 5 *p*-Anisic aldehyde
- 6 Pseudoisoeugenyl 2-methylbutyrate

Key

- Y signal intensity (pA)
X time (min)

Operating conditions

Column: capillary, length 60 m, internal diameter 0,25 mm
 Stationary phase: poly(ethylene glycol)-modified TPA
 Thickness of film: 0,25 μ m
 Oven temperature: isothermal period at 95 °C for 8 min, then temperature programming from 95 °C to 190 °C at a rate of 4 °C/min
 Injector temperature: 250 °C
 Detector temperature: 250 °C
 Detector: flame ionization type
 Carrier gas: nitrogen
 Volume injected: 0,1 μ l
 Carrier gas flow rate: 1 ml/min
 Split ratio: 1/100

Figure A.2 — Typical chromatogram taken on a polar column