



Designation: E2348 – 06 (Reapproved 2010)

# Standard Guide for Framework for a Consensus-based Environmental Decision-making Process<sup>1</sup>

This standard is issued under the fixed designation E2348; the number immediately following the designation indicates the year of original adoption or, in the case of revision, the year of last revision. A number in parentheses indicates the year of last reapproval. A superscript epsilon ( $\epsilon$ ) indicates an editorial change since the last revision or reapproval.

## 1. Scope

1.1 This guide presents a framework for a stakeholder-focused Consensus-based Environmental Decision-making (CBED) process, which is a stakeholder-empowered, process to prioritize and select actions to be initiated with the goal of optimizing many types of environmental decisions that may affect a community or communities.

1.2 This guide is intended to describe a highly flexible CBED process, and therefore does not recommend a specific course of action for this activity.

1.3 This guide is intended to assist in implementing a CBED process, which allows assessing the full impact of any project- or issue-related decisions related to human health, ecological, socio-cultural or economic impacts.<sup>2</sup>

1.4 This guide is not intended to replace existing environmental decision-making or public participation processes. It may be used with other processes or standards that address stakeholder involvement in environmental decision-making.

1.5 *Limitations*—This standard does not address the specific methods for generating or evaluating technical data related to assessing a particular environmental issues. The user should seek other sources on methods to gather information for completion of models or other analyses that may be used during a CBED process.

## 2. Referenced Documents

### 2.1 ASTM Standards:<sup>3</sup>

<sup>1</sup> This guide is under the jurisdiction of ASTM Committee E50 on Environmental Assessment, Risk Management and Corrective Action and is the direct responsibility of Subcommittee E50.05 on Environmental Risk Management.

Current edition approved Sept. 1, 2010. Published January 2011. Originally approved in 2006. Last previous edition approved in 2006 as E2348-06. DOI: 10.1520/E2348-06R10.

<sup>2</sup> The CBED process is not meant to replace other processes, such as the U.S. National Environmental Policy Act (NEPA) process. The strength of the CBED process is to empower the stakeholders in an organized fashion to focus on specific issues that tend to result in litigation and long delays and can be readily used in conjunction with NEPA and/or other public participation processes.

<sup>3</sup> For referenced ASTM standards, visit the ASTM website, [www.astm.org](http://www.astm.org), or contact ASTM Customer Service at [service@astm.org](mailto:service@astm.org). For *Annual Book of ASTM Standards* volume information, refer to the standard's Document Summary page on the ASTM website.

E1739 Guide for Risk-Based Corrective Action Applied at Petroleum Release Sites

E1984 Guide for Brownfields Redevelopment (Withdrawn 2012)<sup>4</sup>

E2205 Guide for Risk-Based Corrective Action for Protection of Ecological Resources

### 2.2 Other Documents:

P/CCRARM (The Presidential/Congressional Commission on Risk Assessment and Risk Management), 1997a, Framework for Environmental Health Risk Management. Final Report. Volume I.<sup>5</sup>

P/CCRARM (The Presidential/Congressional Commission on Risk Assessment and Risk Management), 1997b, Risk Assessment and Risk Management in Regulatory Decision-Making. Volume II.<sup>6</sup>

Quality of Stakeholder-Based Decisions and Understanding Risk<sup>7</sup>

40CFR, Part 1501-1506, The Quality of Stakeholder-Based Decisions: Lessons from the Case Study Record, Resources for the Future<sup>8</sup>

10CFR Part 20, NEPA and Agency Planning; "Standards for Protection Against Radiation," Subpart E, "Radiological Criteria for License Termination."<sup>8</sup>

## 3. Terminology

### 3.1 Definitions:

3.1.1 *affected stakeholder*—any individual, group, company, organization, government, tribe or other entity which may be directly affected by or has a stake in the outcome of the specific CBED process.

3.1.2 *community*—a group or groups of individuals who live or work in specific neighborhoods or regions.

<sup>4</sup> The last approved version of this historical standard is referenced on [www.astm.org](http://www.astm.org).

<sup>5</sup> Available at <http://www.riskworld.com/Nreports/nr7me001.htm>.

<sup>6</sup> Available at <http://www.riskworld.com/Nreports/nr7me001.htm>

<sup>7</sup> Available at: <http://www.rff.org/Documents/RFF-DP-00-56.pdf>

<sup>8</sup> Available from Standardization Documents Order Desk, DODSSSP, Bldg. 4, Section D, 700 Robbins Ave., Philadelphia, PA 19111-5098.

3.1.3 *consensus-based environmental decision-making (CBED) framework*—a process structure that will facilitate empowering affected stakeholders in developing a CBED process.

3.1.4 *consensus-based environmental decision-making (CBED) process*—a stakeholder-empowered process to assess, prioritize and select actions to initiate with the goal of optimizing environmental decisions with respect to human health, and ecological, socio-cultural, and economic impacts.

3.1.5 *informed consent*—agreement reached by affected stakeholders, which is obtained by a process by which affected stakeholders (1) are involved in a participative process that creates common understanding of the issues, concerns and priorities held by all affected stakeholders; (2) assess, prioritize and select actions to improve the problem situation; and (3) agree to trade-offs to achieve consensus on specific initiatives related to the CBED process.

3.1.6 *interested party*—any individual, group, company, organization or other entity which is not an “affected stakeholder” but which is interested in the outcome of the particular CBED process. Interested parties are not empowered with a decision-making role, and may participate on the Stakeholder Committee only as an observer or to provide information at the discretion of the Stakeholder Committee.

3.1.7 *regulator*—a local, regional, state/provincial or federal government agency or person employed to administrator enforce compliance with laws and regulations, which may be either a stakeholder, a decision-maker, or an advisor to the Stakeholder Committee.

3.1.8 *stakeholder committee*—the entity empowered to make decisions within the CBED process which is composed of representative(s) selected from each group of affected stakeholders. Members of the Stakeholder Committee are responsible to act as liaisons with their respective stakeholder groups.

#### **4. Summary of Guide**

4.1 The Consensus-Based Environmental Decision-making Process is a stakeholder-empowered, community-specific process established to assess, prioritize and select actions to initiate with the goal of optimizing environmental decision-making with respect to human health, ecological, socio-cultural, and economic impacts. The Stakeholder Committee may consider issues related to environmental justice, which relates to the fair treatment and meaningful involvement of all people, regardless of race, ethnicity, income, national origin or education level. The CBED process is an iterative process comprised of five main steps: (1) affected stakeholder identification and formation of the Stakeholder Committee; (2) information gathering; (3) forecasting; (4) establishment of informed consent; and (5) implementation and evaluation of initiatives.

4.2 The CBED process facilitates decision-making through negotiations among affected stakeholders with fairly consensual decision rules. An important part of the process is to determine and clearly communicate to all participants the rules to be followed about transparency, the procedures that will be

used to reach consensus, and the delineation of the ultimate decision-making authority.

4.3 The CBED process allows the impact of any project-related or issue-related decision to be assessed. The process provides all affected stakeholders with scientific and legal analyses and decision criteria that are prepared and interpreted by scientific, technical, and legal experts, as well as relevant qualitative experiential knowledge and values-based decision criteria. The Stakeholder Committee decides the relevance and importance of the criteria to the decision under consideration.

4.4 There is no specific path that has to be followed when initiating and participating in this CBED process. Depending on the needs and priorities of the affected stakeholders and the legal constraints governing specific environmental decisions, different entities may initiate the process, different procedural rules may be adopted, and different analysis tools may be used to address each issue or concern.

#### **5. Significance and Use**

5.1 This standard guide is designed to help the owners and regulators of a specific environmental problem to identify and integrate affected stakeholders and establish a process to identify and work through all the key questions and answers essential to a mutually acceptable decision. This standard guide presents a “framework” that is intended to help ensure that all the CBED process components (that is, human health, ecological condition, socio-cultural values and economic well-being) are considered, but is designed to allow the user to interpret which components of the process are applicable and how these components are defined for the specific environmental problem being addressed. It also provides general guidance to help with selecting approaches and methods for specific analyses of each of the major CBED components (that is, human health, ecological condition, socio-cultural values, and economic well-being). The CBED process can be easily coupled with other relevant standards (for example Guides E1739, E1984, and E2205) and environmental compliance guidance and requirements, for example, Quality of Stakeholder-Based Decisions and Understanding Risk, CRF40 and CFR10.

5.2 The CBED process is appropriate in two contexts: (1) when a specific project is proposed; and (2) when there are or may be public concerns about specific health, environmental, cultural, social or economic issues.

5.3 Involving affected stakeholders actively in the decision-making process reorients that process from one dominated by regulators and owners to one that includes those who live with the consequences of the decision. This not only increases the successful implementation of decisions, but also can promote greater trust in government, industry and other institutions (P/CCRARM, 1997a).

#### **6. Consensus-based Environmental Decision-making Framework**

6.1 *Identification of Affected Stakeholders and Formation of the Stakeholder Committee:*

6.1.1 Stakeholders are at the center of the CBED process, and are involved from the earliest issue identification through

the decision-making and decision-evaluation activities. The affected stakeholders contribute to problem definition, question formulation, and decision-making rather than just providing feedback about decisions made by others.

6.1.2 Among the first choices to be made is what level of participation is desired for the particular CBED process; the focus may be on individuals (as in a participatory democracy), on groups (as in a representative democracy), or a combination of the two. Serious, active management of two-way communication is essential and required to identify the appropriate parties early in the process. Adequate time should be allocated to complete this effort before other significant CBED discussions are undertaken.

6.1.3 It is necessary to both identify and involve the affected stakeholders and interested parties. These groups should be invited to select (a) representative(s) to participate on the Stakeholder Committee; the most effective representatives are those selected by the group or organization to be represented. There may be (a) representative(s) of several organizations within each category (for example, there may be two main industries in the area; there may be three government agencies which require representation; etc.). Each member of the Stakeholder Committee is responsible to act as liaison with their respective stakeholder group.

6.1.4 Construction of a “stakeholder map” is one effective technique to guide the stakeholder identification process (for example, Fig. 1). The map for a particular CBED process should be tailored to the specific features of the process. The literature on stakeholder involvement contains many different stakeholder maps, classifications and typologies. The map presented in Fig. 1 is an element of the CBED process that should be tailored to the specific needs of a particular process, which requires broad insights into the local and regional cultures that may be affected by the process. Most importantly,

the map should be recognized as a “living” entity, subject to modification as needed throughout the life of the process. Delineations of different spokes of the map are not intended to imply or expect “camps of different opinion,” about potential issues related to the process; but rather to guide all participants toward ensuring completeness in representation of stakeholder groups. Refinements to the map should be made as participants identify different relationships or additional individuals or groups.

6.1.5 The Stakeholder Committee should identify a chairperson. The Chairperson should be selected by the entire Stakeholder Committee and be willing to commit the time necessary to fulfill this function. The Chairperson should be perceived as fair and impartial and should have collaborative leadership skills, including facilitating group interactions.

6.1.6 For the Stakeholder Committee to function optimally, it should establish ground rules for its operations and its members. The basic ground rules are honest communication, clear understanding of how consensus will be reached and clear delineation of whom or which agency is the final decision-maker (P/CCRARM, 1997b). Ground rules will be needed for: how communications will be dealt with; how information and decisions will be documented; how to deal with a deadlock on an issue; and who will control the data and information generated after the CBED process is completed.

6.1.7 Depending on the specific CBED process, the services of a professional facilitator/mediator may be useful. The decision to employ a professional facilitator or mediator may be made at the beginning of the CBED process or during the process.

6.1.8 The CBED process may proceed once the affected stakeholders have been identified and contacted, and the Stakeholder Committee has been formed and includes sufficient representation from each stakeholder group (Fig. 2). The

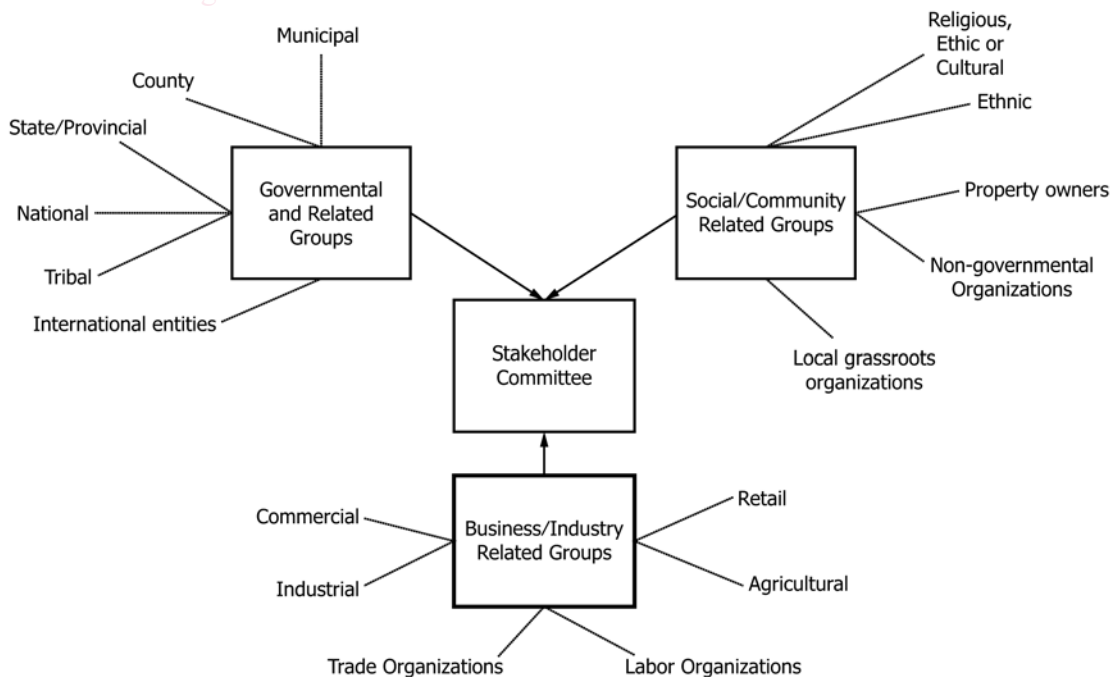


FIG. 1 Example of a Stakeholder Map Intended to Guide Identification and Notification of All Potential Participants in a CBED Process

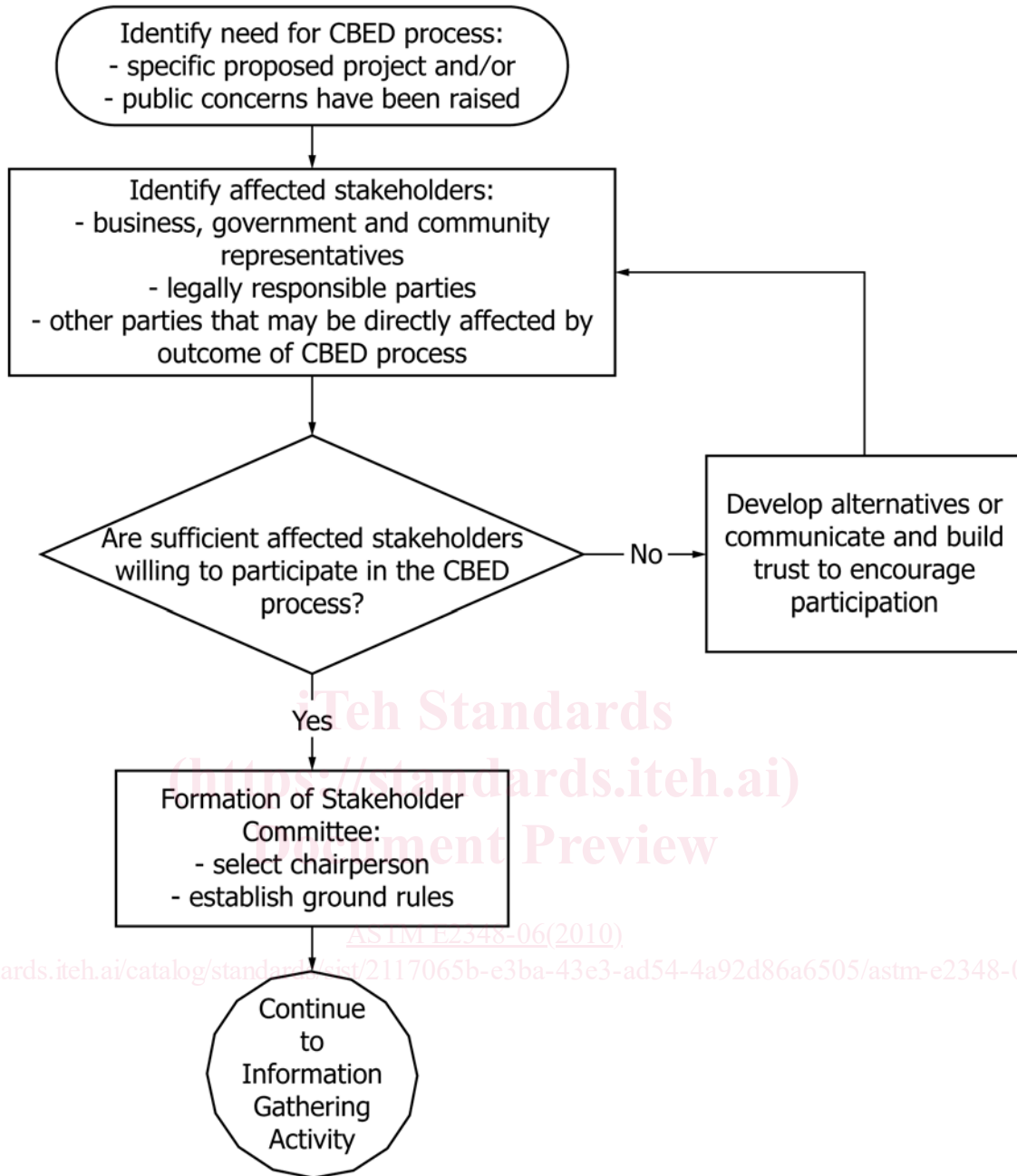


FIG. 2 Stakeholder Committee Formation

Stakeholder Committee may wish to define clearly the criteria it will use to make the determination to proceed.

6.2 Information Gathering:

6.2.1 Once the Stakeholder Committee has been formed, the CBED process continues with the Information Gathering. In this activity, information is gathered on stakeholder issues, perceptions, preferences and constraints. Various tools may be used to gather information, such as meetings, focus groups, newsletter, web sites, etc. Information is compiled on issues relevant to the specific CBED process, possibly including legally required considerations, current health status, environmental issues, social issues, cultural factors, economic status of

the region, or other areas, as appropriate. Identification of issues is critical because this information will form the basis of the modeling effort within the Option Generation and Impact Forecasting activity of the framework.

6.2.2 It is important to discover what data presently exist about the local economy, human health, the ecology of the area, and the socio-cultural description of the area. If data do not exist or cannot be found through other sources, then primary data collection might be necessary at this point in the process. If it is determined that data cannot be gathered for a certain area of emphasis, then it might be necessary to reassess