



Designation: A842 – 11

## Standard Specification for Compacted Graphite Iron Castings<sup>1</sup>

This standard is issued under the fixed designation A842; the number immediately following the designation indicates the year of original adoption or, in the case of revision, the year of last revision. A number in parentheses indicates the year of last reapproval. A superscript epsilon ( $\epsilon$ ) indicates an editorial change since the last revision or reapproval.

### 1. Scope

1.1 This specification covers castings made of compacted graphite iron, which is described as cast iron with the graphite in compacted (vermiform) shapes and essentially free of flake graphite.

1.2 No precise quantitative relationship can be stated between the properties of iron in the various locations of the same casting and those of a test bar cast from the same iron (see [Appendix X1](#)).

1.3 The values stated in SI units are to be regarded as standard. No other units of measurement are included in this standard.

1.3.1 *Exception*—The inch-pound units in [Figs. 1-3](#) and [5](#) are standard. SI units are added for information only.

1.4 *This standard does not purport to address all of the safety concerns, if any, associated with its use. It is the responsibility of the user of this standard to establish appropriate safety and health practices and determine the applicability of regulatory limitations prior to use.*

### 2. Referenced Documents

2.1 *ASTM Standards:*<sup>2</sup>

[A247 Test Method for Evaluating the Microstructure of Graphite in Iron Castings](#)

[E8/E8M Test Methods for Tension Testing of Metallic Materials](#)

2.2 *Federal Standard:*<sup>3</sup>

[Federal Standard No. 123 Marking for Shipment \(Civil Agencies\)](#)

2.3 *American National Standard:*<sup>4</sup>

<sup>1</sup> This specification is under the jurisdiction of ASTM Committee [A04](#) on Iron Castings and is the direct responsibility of Subcommittee [A04.02](#) on Malleable and Ductile Iron Castings.

Current edition approved Feb. 1, 2011. Published March 2011. Originally approved in 1985. Last previous edition approved in 2010 as A842 - 10. DOI: 10.1520/A0842-11.

<sup>2</sup> For referenced ASTM standards, visit the ASTM website, [www.astm.org](http://www.astm.org), or contact ASTM Customer Service at [service@astm.org](mailto:service@astm.org). For *Annual Book of ASTM Standards* volume information, refer to the standard's Document Summary page on the ASTM website.

<sup>3</sup> Available from Standardization Documents Order Desk, DODSSP, Bldg. 4, Section D, 700 Robbins Ave., Philadelphia, PA 19111-5098, <http://dodssp.daps.dla.mil>.

<sup>4</sup> Available from American National Standards Institute (ANSI), 25 W. 43rd St., 4th Floor, New York, NY 10036, <http://www.ansi.org>.

### MIL-STD-129 Marking for Shipment and Storage

### 3. Ordering Information

3.1 Orders for material to this specification shall include the following information:

3.1.1 ASTM designation and year of issue,

3.1.2 Grade of compacted graphite iron required as identified in [Table 1](#),

3.1.3 Special properties if required, (see [4.1](#) and [10.1](#)),

3.1.4 If samples other than those identified in [Section 9](#) are required,

3.1.5 Certification if so designated by the purchaser, and

3.1.6 Special preparation for delivery if required.

### 4. Chemical Composition

4.1 It is the intent of this specification to subordinate chemical composition to mechanical properties; however, any chemical requirement may be specified by agreement between the manufacturer and the purchaser.

### 5. Requirements

5.1 Compacted graphite cast iron shall be examined metallographically for the acceptable graphite formation.

5.2 The metallographic examination shall be performed on a casting, a separately cast test coupon, as shown in [Fig. 1](#) or on a test lug from a casting. The test coupon or casting lug shall represent the last metal from the treated batch. The casting lug dimension and location will be agreed on by manufacturer and purchaser.

5.3 When castings are produced to this specification by treating the iron in the mold for graphite form control, the manufacturer may use separately cast test coupons or cut test specimens from castings to qualify conformance of the microstructure requirements. When separately cast test coupons are used, the test coupons shall have a chemical composition representative of that in the castings, produced from that iron poured, and having a cooling rate equivalent to that obtained through use of test molds as shown in [Figs. 1-3](#). The size of the cast coupon representing the castings shall be the option of the purchaser. In case no option is expressed, the manufacturer shall make the choice. When test specimens are to be taken from a casting, the location shall be agreed on by the purchaser and the manufacturer and documented on the casting drawing. It is the manufacturer's required responsibility to maintain

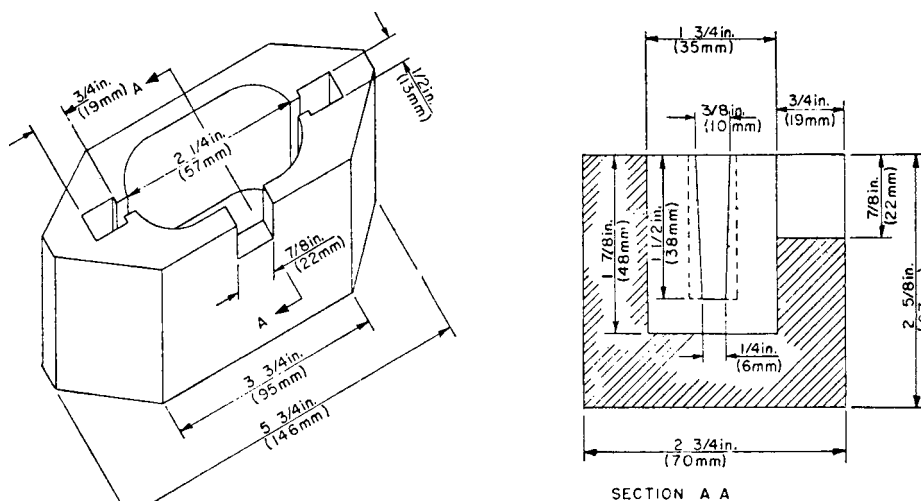
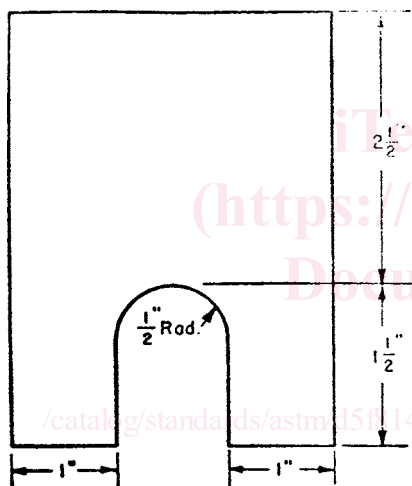


FIG. 1 Test Coupon for Microscopical Examination of Compacted Graphite Iron

NOTE—The length of the keel block shall be 6 in. (152 mm).



Metric Equivalents			
in.	mm	in.	mm
1/2	12.7	1 1/2	38.1
1	25.4	2 1/2	63.5

FIG. 2 Keel Block

adequate controls and documentation to assure the customer that test specimen microstructures are representative of microstructure in the castings shipped.

5.4 The acceptable graphite formation in the microstructure of the test coupon or casting lug shall contain 80 % minimum Type IV graphite (see Plate 1, Graphite Form Types of Test Method A247). The percentage graphite can be arrived at by using the manual particle count, semiautomatic, or automatic image analysis methods. Whichever method is used, the procedure should be agreed on between the manufacturer and the purchaser.

5.5 Unless otherwise specified, the matrix microstructure of castings covered by this specification shall be substantially free of primary cementite.

NOTE 1—Flake graphite in the casting surface reduces fatigue life,

which should be taken into account during casting design. Machining removes this flake graphite and shot blasting generally minimizes its effect.

## 6. Tensile Requirements

6.1 The iron as represented by the test specimens shall conform to the requirements for tensile properties, as identified in Table 1.

6.2 Tensile properties shall be determined using the test bar described in 7.1 or one of the test coupons described in 7.2 except as provided in 10.4.

6.3 The yield strength presented in Table 1 shall be determined at 0.2 % offset by the offset method as described in Test Methods E8/E8M. Other methods may be used by mutual agreement between manufacturer and purchaser.

## 7. Cast Test Bars

7.1 Test bars shall be separate castings poured from the same iron as the castings they represent. Test bars shall be cast to the size and shape as described in Table 2 and shown in Fig. 4.

7.2 Test coupons shall be separate castings poured from the same iron as the castings they represent. Test coupons shall be cast to the size and shape of the Y-block shown in Fig. 5, the keel block shown in Fig. 2, or the modified keel block shown in Fig. 3.

7.3 Test bars and test coupons shall be cast in dried, baked, or chemically bonded molds consisting of an aggregate of silica sand with the appropriate binders. All molds shall have a thickness of sand adjacent to the test piece equal to or greater than the thickness of the piece.

7.4 Test bars and test coupons shall be subjected to the same thermal treatment as the castings they represent.

## 8. Tension Test Specimen

8.1 The standard round tension test specimen with 50-mm gage length described in Test Methods E8/E8M shall be used.

## 9. Workmanship, Finish, and Appearance

9.1 The surface of the casting shall be inspected visually for surface discontinuities such as cracks, hot tears, adhering sand