

ISO/TC 131/SC 8

Secretariat: BSI

Voting begins on:  
**2021-08-20**

Voting terminates on:  
**2021-10-15**

---

---

## Water hydraulics — Water-hydraulic pumps — Methods of testing and representing basic steady-state performance

**iTeh STANDARD PREVIEW**  
**(standards.iteh.ai)**

ISO/FDIS 23840

<https://standards.iteh.ai/catalog/standards/sist/2a13bf76-86e2-40c3-8ea9-544dcec57cdd/iso-fdis-23840>

RECIPIENTS OF THIS DRAFT ARE INVITED TO SUBMIT, WITH THEIR COMMENTS, NOTIFICATION OF ANY RELEVANT PATENT RIGHTS OF WHICH THEY ARE AWARE AND TO PROVIDE SUPPORTING DOCUMENTATION.

IN ADDITION TO THEIR EVALUATION AS BEING ACCEPTABLE FOR INDUSTRIAL, TECHNOLOGICAL, COMMERCIAL AND USER PURPOSES, DRAFT INTERNATIONAL STANDARDS MAY ON OCCASION HAVE TO BE CONSIDERED IN THE LIGHT OF THEIR POTENTIAL TO BECOME STANDARDS TO WHICH REFERENCE MAY BE MADE IN NATIONAL REGULATIONS.



---

---

Reference number  
ISO/FDIS 23840:2021(E)

## iTeh STANDARD PREVIEW (standards.iteh.ai)

ISO/FDIS 23840

<https://standards.iteh.ai/catalog/standards/sist/2a13bf76-86e2-40c3-8ea9-544dcec57cdd/iso-fdis-23840>



### **COPYRIGHT PROTECTED DOCUMENT**

© ISO 2021

All rights reserved. Unless otherwise specified, or required in the context of its implementation, no part of this publication may be reproduced or utilized otherwise in any form or by any means, electronic or mechanical, including photocopying, or posting on the internet or an intranet, without prior written permission. Permission can be requested from either ISO at the address below or ISO's member body in the country of the requester.

ISO copyright office  
CP 401 • Ch. de Blandonnet 8  
CH-1214 Vernier, Geneva  
Phone: +41 22 749 01 11  
Email: [copyright@iso.org](mailto:copyright@iso.org)  
Website: [www.iso.org](http://www.iso.org)

Published in Switzerland

# Contents

	Page
Foreword .....	iv
Introduction .....	v
1 Scope .....	1
2 Normative references .....	1
3 Terms and definitions .....	1
4 Symbols and units .....	2
5 Water .....	2
6 Tests .....	2
6.1 Requirements .....	2
6.1.1 General .....	2
6.1.2 Installation of the unit under test .....	3
6.1.3 Test fluid .....	3
6.1.4 Temperature .....	3
6.2 Test circuit .....	3
6.3 Test measurement .....	4
6.4 Preparation of test .....	5
6.5 Measurement procedure .....	5
7 Expression of results .....	6
Annex A (informative) Errors and classes of measurement accuracy .....	7
Annex B (normative) Permissible variation of mean indicated values of controlled parameters .....	9
Annex C (informative) Example of graphs presenting test results .....	10
Bibliography .....	14

## Foreword

ISO (the International Organization for Standardization) is a worldwide federation of national standards bodies (ISO member bodies). The work of preparing International Standards is normally carried out through ISO technical committees. Each member body interested in a subject for which a technical committee has been established has the right to be represented on that committee. International organizations, governmental and non-governmental, in liaison with ISO, also take part in the work. ISO collaborates closely with the International Electrotechnical Commission (IEC) on all matters of electrotechnical standardization.

The procedures used to develop this document and those intended for its further maintenance are described in the ISO/IEC Directives, Part 1. In particular, the different approval criteria needed for the different types of ISO documents should be noted. This document was drafted in accordance with the editorial rules of the ISO/IEC Directives, Part 2 (see [www.iso.org/directives](http://www.iso.org/directives)).

Attention is drawn to the possibility that some of the elements of this document may be the subject of patent rights. ISO shall not be held responsible for identifying any or all such patent rights. Details of any patent rights identified during the development of the document will be in the Introduction and/or on the ISO list of patent declarations received (see [www.iso.org/patents](http://www.iso.org/patents)).

Any trade name used in this document is information given for the convenience of users and does not constitute an endorsement.

For an explanation of the voluntary nature of standards, the meaning of ISO specific terms and expressions related to conformity assessment, as well as information about ISO's adherence to the World Trade Organization (WTO) principles in the Technical Barriers to Trade (TBT), see [www.iso.org/iso/foreword.html](http://www.iso.org/iso/foreword.html).

This document was prepared by Technical Committee ISO/TC 131, *Fluid power systems*, Subcommittee SC 8, *Product testing*.

Any feedback or questions on this document should be directed to the user's national standards body. A complete listing of these bodies can be found at [www.iso.org/members.html](http://www.iso.org/members.html).

## Introduction

Water hydraulics or water-hydraulic systems (hydraulic systems in which water is used as the power-transmitting medium in a fluid power system) have potential market demand as they facilitate maintaining cleanness and permit a reduction in fluid cost, machine size and fire risk. Applications of water hydraulics have been expanding into new fields which require cleanness, most notably the cleaning sector, animals and plants, food, packaging, cosmetics and semiconductors, amongst others. This is due to the environmental cleanliness of water compared with alternative hydraulic fluids, such as oil.

Although water hydraulics is a generally well-known concept, there are currently no international standards specialized in water hydraulics. As the technology of water hydraulics is an emerging technology, it is considered a relevant topic for international standardization by related countries, including both developing countries as well as developed ones, and in particular by ISO/TC 131 (Fluid power systems), in order to accelerate the development of this technology.

The water-hydraulic pump is one of the key components of water hydraulics. The development of an appropriate standard for water-hydraulic pumps, which focuses on methods of testing and representing basic steady state performance, is therefore critical to business trade and/or product acceptance by consumers.

## iTeh STANDARD PREVIEW (standards.iteh.ai)

ISO/FDIS 23840

<https://standards.iteh.ai/catalog/standards/sist/2a13bf76-86e2-40c3-8ea9-544dcec57cdd/iso-fdis-23840>

## **iTeh STANDARD PREVIEW** **(standards.iteh.ai)**

ISO/FDIS 23840

<https://standards.iteh.ai/catalog/standards/sist/2a13bf76-86e2-40c3-8ea9-544dcec57cdd/iso-fdis-23840>

# Water hydraulics — Water-hydraulic pumps — Methods of testing and representing basic steady-state performance

## 1 Scope

This document specifies methods for determining the performance and the efficiency of water-hydraulic positive displacement pumps having continuously rotating shafts. This document provides test equipment, a test procedure under steady-state conditions and the presentation of test results.

## 2 Normative references

The following documents are referred to in the text in such a way that some or all of their content constitutes requirements of this document. For dated references, only the edition cited applies. For undated references, the latest edition of the referenced document (including any amendments) applies.

ISO 4391, *Hydraulic fluid power — Pumps, motors and integral transmissions — Parameter definitions and letter symbols*

ISO 5598, *Fluid power systems and components — Vocabulary*

## 3 Terms and definitions (standards.iteh.ai)

For the purposes of this document, the terms and definitions given in ISO 4391 and ISO 5598 and the following apply.

ISO and IEC maintain terminological databases for use in standardization at the following addresses:

- ISO Online browsing platform: available at <https://www.iso.org/obp>
- IEC Electropedia: available at <https://www.electropedia.org/>

### 3.1

#### **water-hydraulic pump**

positive displacement pump that transforms mechanical energy into water-hydraulic energy with water as the system fluid

### 3.2

#### **flow rate of the pump under test**

flow rate measured at the outlet port of the pump under test

### 3.3

#### **pump volumetric efficiency**

ratio of the effective output flow rate to the derived output flow rate

### 3.4

#### **hydromechanical pump efficiency**

ratio of the derived torque to the effective torque

### 3.5

#### **inlet gauge pressure of the pump under test**

measured gauge pressure at or near the suction port of the pump under test

Note 1 to entry: The value of “inlet gauge pressure of the pump under test” shows either positive or negative.

### 3.6

#### outlet gauge pressure of the pump under test

measured gauge pressure at or near the delivery port of the pump under test

### 3.7

#### tap water

water supplied through pipes or tubes to taps/faucets

### 3.8

#### total dissolved solids

#### TDS

weight of inorganic and organic matter in true solution per unit volume of water

## 4 Symbols and units

For the purposes of this document, the symbols and units listed in [Table 1](#) apply. In [Table 1](#), as the unit of derived capacity and shaft speed,  $\text{m}^3$  and  $\text{s}^{-1}$ , as well as  $\text{m}^3/\text{rev}$  and  $\text{rev/s}$ , may be used.

**Table 1 — Symbols and units**

Description	Symbols	Unit
Pump overall efficiency	$\eta_t$	-
Hydromechanical pump efficiency	$\eta_m$	-
Pump volumetric efficiency	$\eta_v$	-
Rotational frequency	$n$	rev/s
Inlet gauge pressure of the pump under test	$p_{e,i}$	Pa
Outlet gauge pressure of the pump under test	$p_{e,o}$	Pa
Flow rate of the pump under test	$q_p$	$\text{m}^3/\text{s}$
Effective torque	$t_e$	N·m
Water temperature	$T_w$	K
Derived capacity	$V_i$	$\text{m}^3/\text{rev}$

## 5 Water

Tap water can be used for the working fluid of water-hydraulic systems including a water-hydraulic pump.

## 6 Tests

### 6.1 Requirements

#### 6.1.1 General

Installations shall be designed to prevent air entrainment during operation and measures shall be taken to remove free air from the system before testing.

The tank height level should be designed to be higher than the pump suction port, in order to prevent the reduction of the suction pressure.

Tap water shall be supplied through a filter with the specified filtration performance (10 microns) whilst tap water is supplied to a hydraulic tank.



[Figure 1](#) illustrates the basic circuit for the test of a water-hydraulic pump. This figure does not incorporate all the safety devices necessary to protect against damage in the event of any component fracture or fragmentation. Those who are responsible for carrying out the test shall give due consideration to safeguarding both personnel and equipment.

#### 6.1.2 Installation of the unit under test

The test circuit shall be constructed in accordance with [Figure 1](#).

#### 6.1.3 Test fluid

Working fluid of water hydraulics shall be tap water. Additional additives shall not be added.

#### 6.1.4 Temperature

Tests shall be carried out at a stated test fluid temperature. The test fluid temperature shall be measured in a tank or at the pump inlet. The position of the temperature measurement shall be determined by the manufacturer and user of the pump under test. Water temperature shall be controlled by heat exchanger within the range recommended by the manufacturer. Measurements shall be made at temperature levels 20 °C to 40 °C.

The test fluid temperature shall be maintained within the limits stated in [Table 2](#). The temperature tolerance (either A, B, or C) shall be recorded.

**Table 2 — Indicated test fluid temperature tolerance**

Temperature accuracy class (see <a href="#">Annex A</a> )	A	B	C
Temperature tolerance (°C)	±1,0	±2,0	±4,0

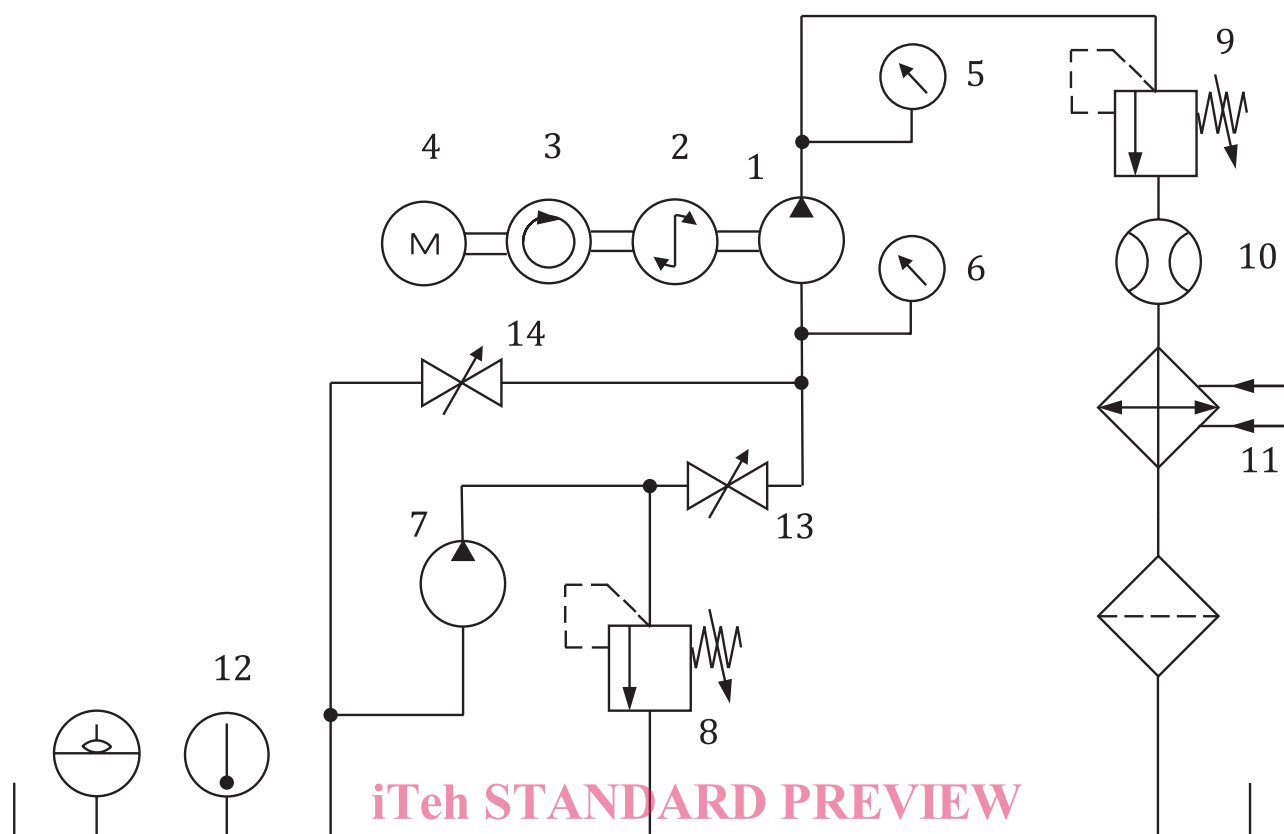
ISO/FDIS 23840

#### 6.2 Test circuit

The test circuit shown in [Figure 1](#) shall be used.

The first shut-off valve (Key 14 of [Figure 1](#)) is closed and the second shut-off valve (Key 13) is opened when the inlet port of the pump under test is pressurized by a boost pump (Key 7). The inlet pressure of the pump under test is adjusted by a pressure relief valve (Key 8).

The water level in a tank from the pump inlet port shall be kept up within a given range (e.g. 0,8 m to 1,0 m). A boost pump (Key 7) may be provided to keep the inlet pressure within an acceptable range, which shall be determined by the manufacturer and user of the pump under test, in case there is a demand for pressurized inlet port as a measure to prevent the occurrence of cavitation.

**Key**

- |   |                       |    |   |
|---|-----------------------|----|---|
| 1 | pump under test       | 8  | pressure relief valve (boost pump)      |
| 2 | torque meter          | 9  | pressure relief valve (pump under test) |
| 3 | tachometer            | 10 | flowmeter                               |
| 4 | AC servo motor        | 11 | heat exchanger                          |
| 5 | outlet pressure gauge | 12 | temperature transducer                  |
| 6 | inlet pressure gauge  | 13 | shut-off valve (boost pump)             |
| 7 | boost pump            | 14 | shut-off valve (pump under test)        |

**Figure 1 — Test circuit for pump****6.3 Test measurement**

A test report shall contain at least the following six measured results:

- effective torque
- rotational frequency
- flow rate of the pump under test
- outlet gauge pressure of the pump under test
- inlet gauge pressure of the pump under test
- water temperature

## 6.4 Preparation of test

The preparation shall be completed in advance, before beginning a test, according to the following procedure using the test circuit shown in [Figure 1](#):

- 1) Power the test setup.
- 2) Start the cooling system and set the temperature to a specified value in the range of 20 °C to 40 °C.
- 3) Set the rotational frequency to the minimum working rotational frequency (e.g. 500 min<sup>-1</sup>) and verify no-leak of water under the condition that the main relief valve (pressure relief valve, Key 9 of [Figure 1](#)) is fully released. Increase the rotational frequency gradually (e.g. 900, 1 300, 1 700 min<sup>-1</sup>, etc.) to the maximum working rotational frequency (e.g. 1 800 min<sup>-1</sup>) after a few minutes of operation (e.g. three minutes) at the minimum working pressure. Verify no-leak of water. Verify that no abnormal noise and no abnormal vibration of the pump and other components are observed.
- 4) Increase the pump outlet pressure to the maximum working pressure (e.g. 16 MPa) with the rotational frequency kept at the maximum working rotational frequency (e.g. 1 800 min<sup>-1</sup>), by adjusting the main relief valve (pressure relief valve, Key 9),
- 5) Maintain the condition of 4) for a few minutes (e.g. three minutes).
- 6) Stop the preparation operation by using the following procedures a) and b) when water temperature and effective torque show steady-state values.
  - a) Decrease the outlet gauge pressure of the pump under test by fully releasing the main relief valve (pressure relief valve, Key 9).
  - b) Decrease the rotational frequency until the pump is stopped.

## 6.5 Measurement procedure

ISO/FDIS 23840

<https://standards.iteh.ai/catalog/standards/sist/2a13bf76-86e2-40c3-8ea9->

Pump basic steady-state performance shall be measured in the rotational frequency range of the minimum to maximum working rotational frequencies (e.g. 500 min<sup>-1</sup> to 1 800 min<sup>-1</sup>) and in the outlet gauge pressure range of the minimum to maximum working pressures (e.g. the pressure obtained by fully releasing the main relief valve (Key 9 of [Figure 1](#)) to 16 MPa).

Measurement shall be taken according to the following procedure using the test circuit shown in [Figure 1](#).

- 1) Set the rotational frequency of the pump under test to the minimum working rotational frequency (e.g. 500 min<sup>-1</sup>).
- 2) Set the outlet gauge pressure of the pump under test to the pressure obtained by fully releasing the main relief valve (Key 9).
- 3) Measure the effective torque and rotational frequency by a torque meter (Key 2) and a tachometer (Key 3), respectively, after their values have reached steady-state ones.
- 4) Measure the inlet gauge pressure, outlet gauge pressure and flow rate of the pump under test by an inlet pressure gauge (Key 6), an outlet pressure gauge (Key 5) and by a flowmeter (Key 10), respectively.
- 5) Set the outlet gauge pressure of the pump under test to a specified value (e.g. 1, 2, 3, ... MPa) by adjusting the main pressure relief valve (Key 9).
- 6) Repeat the procedures 3) to 5) up to the maximum working pressure (e.g. 16 MPa) with the rotational frequency kept at a constant.
- 7) Repeat the procedures 2) to 6) at increased rotational frequencies up to the maximum rotational frequency (e.g. 1 800 min<sup>-1</sup>).