

---

---

**Plain bearings — Appearance and  
characterization of damage to metallic  
hydrodynamic bearings —**

**Part 1:  
General**

**iTeh STANDARD PREVIEW**  
*Paliers lisses — Aspect et caractérisation de l'endommagement des  
paliers métalliques à couche lubrifiante fluide —  
Partie 1: Généralités*  
(standards.iteh.ai)

ISO 7146-1:2019

<https://standards.iteh.ai/catalog/standards/sist/fl e59744-c677-4d3d-8cb1-d59b1cad7aa0/iso-7146-1-2019>



**iTeh STANDARD PREVIEW**  
**(standards.iteh.ai)**

ISO 7146-1:2019

<https://standards.iteh.ai/catalog/standards/sist/f1e59744-c677-4d3d-8cb1-d59b1cad7aa0/iso-7146-1-2019>



**COPYRIGHT PROTECTED DOCUMENT**

© ISO 2019

All rights reserved. Unless otherwise specified, or required in the context of its implementation, no part of this publication may be reproduced or utilized otherwise in any form or by any means, electronic or mechanical, including photocopying, or posting on the internet or an intranet, without prior written permission. Permission can be requested from either ISO at the address below or ISO's member body in the country of the requester.

ISO copyright office  
CP 401 • Ch. de Blandonnet 8  
CH-1214 Vernier, Geneva  
Phone: +41 22 749 01 11  
Fax: +41 22 749 09 47  
Email: [copyright@iso.org](mailto:copyright@iso.org)  
Website: [www.iso.org](http://www.iso.org)

Published in Switzerland

# Contents

	Page
<b>Foreword</b> .....	<b>v</b>
<b>Introduction</b> .....	<b>vi</b>
<b>1 Scope</b> .....	<b>1</b>
<b>2 Normative references</b> .....	<b>1</b>
<b>3 Terms and definitions</b> .....	<b>1</b>
<b>4 Descriptions, causes and features of damage</b> .....	<b>2</b>
4.1 Damage.....	2
4.1.1 General.....	2
4.1.2 Indicators of damage.....	2
4.2 Damage causes.....	2
4.3 Damage appearances.....	2
4.4 Damage characterization.....	3
4.4.1 General.....	3
4.4.2 Static overload.....	3
4.4.3 Dynamic overload.....	3
4.4.4 Wear by friction.....	3
4.4.5 Overheating.....	3
4.4.6 Insufficient lubrication (starvation).....	3
4.4.7 Contamination.....	3
4.4.8 Cavitation erosion.....	3
4.4.9 Electroerosion.....	3
4.4.10 Hydrogen diffusion.....	4
4.4.11 Bond failure.....	4
4.5 Relationship between damage appearance and damage characterizations.....	4
<b>5 Guidelines for damage analysis</b> .....	<b>5</b>
5.1 General.....	7
5.2 Step 1.....	7
5.3 Step 2.....	7
5.4 Step 3.....	7
5.5 Step 4.....	7
5.6 Step 5.....	7
<b>6 Damage to the bearing surface — Damage characteristics, typical damage appearances and possible damage causes</b> .....	<b>7</b>
6.1 General.....	7
6.2 Static overload.....	8
6.2.1 Typical damage appearances.....	8
6.2.2 Possible damage causes.....	8
6.2.3 Typical examples.....	8
6.3 Dynamic overload.....	9
6.3.1 Typical damage appearances.....	9
6.3.2 Possible damage causes.....	9
6.3.3 Typical examples.....	9
6.4 Wear by friction.....	15
6.4.1 Typical damage appearances.....	15
6.4.2 Possible damage causes.....	16
6.4.3 Typical examples.....	16
6.5 Overheating.....	18
6.5.1 Typical damage appearances.....	18
6.5.2 Possible damage causes.....	19
6.5.3 Typical examples.....	19
6.6 Insufficient lubrication (starvation).....	21
6.6.1 Typical damage appearances.....	21

6.6.2	Possible damage causes	21
6.6.3	Typical examples	21
6.7	Contamination	25
6.7.1	Contamination with particles	25
6.7.2	Contamination with chemicals	32
6.8	Cavitation erosion	37
6.8.1	General	37
6.8.2	Typical damage appearances	37
6.8.3	Possible damage causes	37
6.8.4	Typical examples	37
6.9	Electro-erosion	39
6.9.1	Typical damage appearance	39
6.9.2	Possible damage causes	39
6.9.3	Typical examples	39
6.10	Hydrogen diffusion	40
6.10.1	Typical damage appearances	40
6.10.2	Possible damage cause	41
6.10.3	Typical examples	41
6.11	Bond failure	42
6.11.1	Typical damage appearances	42
6.11.2	Possible damage causes	42
6.11.3	Typical example	42
<b>7</b>	<b>Damage to the bearing back</b>	<b>43</b>
7.1	General	43
7.2	Dynamic overload on the bearing back	43
7.2.1	Typical damage appearance	43
7.2.2	Possible damage causes	43
7.2.3	Typical examples	43
7.3	Wear by friction on the bearing back	45
7.3.1	Typical damage appearances	45
7.3.2	Possible damage causes	45
7.3.3	Typical examples	45
7.4	Contamination with particles on the bearing back	46
7.4.1	Typical damage appearances	46
7.4.2	Possible damage cause	46
7.4.3	Typical examples	47
<b>8</b>	<b>Special position of damage appearances</b>	<b>48</b>
<b>Annex A (informative) Example of use of <a href="#">Table 1</a></b>		<b>51</b>
<b>Bibliography</b>		<b>53</b>

## Foreword

ISO (the International Organization for Standardization) is a worldwide federation of national standards bodies (ISO member bodies). The work of preparing International Standards is normally carried out through ISO technical committees. Each member body interested in a subject for which a technical committee has been established has the right to be represented on that committee. International organizations, governmental and non-governmental, in liaison with ISO, also take part in the work. ISO collaborates closely with the International Electrotechnical Commission (IEC) on all matters of electrotechnical standardization.

The procedures used to develop this document and those intended for its further maintenance are described in the ISO/IEC Directives, Part 1. In particular, the different approval criteria needed for the different types of ISO documents should be noted. This document was drafted in accordance with the editorial rules of the ISO/IEC Directives, Part 2 (see [www.iso.org/directives](http://www.iso.org/directives)).

Attention is drawn to the possibility that some of the elements of this document may be the subject of patent rights. ISO shall not be held responsible for identifying any or all such patent rights. Details of any patent rights identified during the development of the document will be in the Introduction and/or on the ISO list of patent declarations received (see [www.iso.org/patents](http://www.iso.org/patents)).

Any trade name used in this document is information given for the convenience of users and does not constitute an endorsement.

For an explanation of the voluntary nature of standards, the meaning of ISO specific terms and expressions related to conformity assessment, as well as information about ISO's adherence to the World Trade Organization (WTO) principles in the Technical Barriers to Trade (TBT) see [www.iso.org/iso/foreword.html](http://www.iso.org/iso/foreword.html).

This document was prepared by Technical Committee ISO/TC 123 *Plain bearings*, Subcommittee SC 2, *Materials and lubricants, their properties, characteristics, test methods and testing conditions*.

This second edition cancels and replaces the first edition (ISO 7146-1:2008), of which it constitutes a minor revision. The changes compared to the previous edition are as follows:

- Adjustment to the ISO Directives, including the replacement of "may" with "can" throughout.

A list of all parts in the ISO 7146 series can be found on the ISO website.

Any feedback or questions on this document should be directed to the user's national standards body. A complete listing of these bodies can be found at [www.iso.org/members.html](http://www.iso.org/members.html).

## Introduction

In practice, damage to a bearing can often be the result of several mechanisms operating simultaneously. The complex combination of design, manufacture, assembly, operation, maintenance and possible reconditioning often causes difficulty in establishing the primary cause of damage.

In the event of extensive damage or destruction of the bearing, the evidence is likely to be lost, in which case it is impossible to identify how the damage came about.

In all cases, knowledge of the actual operating conditions of the assembly and the maintenance history is of the utmost importance.

The classification of bearing damage established in this document is based primarily upon the features visible on the running surfaces and elsewhere, and consideration of each aspect is needed for reliable determination of the cause of bearing damage.

Since more than one process can cause similar effects on the running surface, a description of appearance alone is occasionally inadequate in determining the cause of damage. Thus [Clause 4](#) is subdivided into several subclauses including damage appearance and damage characteristics.

For the procedure of damage analysis, [Clause 5](#) can be a helpful guide.

In [Clauses 6](#) and [7](#), examples of all damage characteristics with typically associated damage appearance are given.

## iTeh STANDARD PREVIEW (standards.iteh.ai)

[ISO 7146-1:2019](#)

<https://standards.iteh.ai/catalog/standards/sist/fl e59744-c677-4d3d-8cb1-d59b1cad7aa0/iso-7146-1-2019>

# Plain bearings — Appearance and characterization of damage to metallic hydrodynamic bearings —

## Part 1: General

### 1 Scope

This document defines, describes and classifies the characteristics of damage occurring in service to hydrodynamically lubricated metallic plain bearings and journals. It assists in the understanding of the various characteristic forms of damage which can occur.

Consideration is restricted to damage characteristics which have a well-defined appearance and which can be attributed to particular damage causes with a high degree of certainty. Various appearances are illustrated with photographs and diagrams.

### 2 Normative references

The following documents are referred to in the text in such a way that some or all of their content constitutes requirements of this document. For dated references, only the edition cited applies. For undated references, the latest edition of the referenced document (including any amendments) applies.

ISO 4378-1, *Plain bearings — Terms, definitions, classification and symbols — Part 1: Design, bearing materials and their properties*

ISO 4378-2, *Plain bearings — Terms, definitions, classification and symbols — Part 2: Friction and wear*

ISO 4378-3, *Plain bearings — Terms, definitions, classification and symbols — Part 3: Lubrication*

ISO 4378-4, *Plain bearings — Terms, definitions, classification and symbols — Part 4: Basic symbols*

### 3 Terms and definitions

For the purposes of this document, the terms and definitions given in ISO 4378-1, ISO 4378-2, ISO 4378-3, ISO 4378-4 and the following apply.

ISO and IEC maintain terminological databases for use in standardization at the following addresses:

- ISO Online browsing platform: available at <https://www.iso.org/obp>
- IEC Electropedia: available at <http://www.electropedia.org/>

#### 3.1

##### **damage to plain bearings**

##### **bearing damage**

change in appearance occurring on the bearing surface and/or on the bearing back during operation that adversely affect the performance of the bearing

## 4 Descriptions, causes and features of damage

### 4.1 Damage

#### 4.1.1 General

Damage to plain bearings is a phenomenon that adversely changes their tribological function and is usually accompanied with a change in appearance. The damage is initiated by the damage cause and develops to the end of service life.

As long as no abnormal conditions occur, service life of the plain bearing relates to the service life of the machine.

#### 4.1.2 Indicators of damage

Typical indicators observed during machine operation are: continuously increasing service temperature, decline of lubricant pressure, noise, vibration and bad smell.

### 4.2 Damage causes

The cause is the practical event that initiates and leads to damage. The majority of damage causes are found outside the bearing.

### 4.3 Damage appearances

Damage appearance is a defined visible picture of the bearing surface and/or of the bearing back. Damage appearances are clearly different from each other.

A plain bearing failure can show various damage appearances. Usually, damage appearances are directly associated with damage characteristics, but not directly with the damage cause (for exceptions, see [6.8](#) and [6.9](#)).

Damage appearances include:

- a) depositions;
- b) creep deformation;
- c) deformation due to temperature cycles;
- d) thermal cracks;
- e) fatigue cracks;
- f) material relief (loss of bond);
- g) frictional corrosion;
- h) melting out, seizure;
- i) polishing, scoring;
- j) traces of mixed lubrication, worn material;
- k) discolouration (blue, black colour);
- l) corrosion, fluid erosion;
- m) embedded particles, particle-migration tracks, formation of wire wool;
- n) electric arc craters;



o) cavitation erosion appearance: worn-out material.

## 4.4 Damage characterization

### 4.4.1 General

A damage characterization is a description of what has happened based on a detected typical combination of damage appearances. Defined characteristics provide the basis for establishing the cause of damage.

Damage characterizations are clearly different from each other, as specified in [4.4.2](#) to [4.4.11](#).

### 4.4.2 Static overload

Material is loaded above compressive yield strength corresponding to actual operation temperature.

### 4.4.3 Dynamic overload

Material is loaded above fatigue strength corresponding to actual operation temperature. Intensive dynamic load also favours damage by weakening the fit.

### 4.4.4 Wear by friction

Wear by friction is confined to changes in microgeometry and to the loss of material as a result of interaction between journal and bearing. Movement between backing and housing also favours wear by friction.

### 4.4.5 Overheating

The heat balance in the lubricant, the bearing, the environment and the cooling system as required at design stage is not realized resulting in a higher temperature than anticipated. The viscosity and, therefore, the load capacity decrease with increasing temperature. This results again in temperature increase. The bearing, therefore, cannot operate stably if cooling cannot stop further temperature increase.

### 4.4.6 Insufficient lubrication (starvation)

This affects the tribological system.

### 4.4.7 Contamination

Contamination of lubricant with foreign particles or reaction products can result in damage to a bearing. Foreign particles embedded between bearing backing and housing also favour damage.

### 4.4.8 Cavitation erosion

Decreased pressure in liquids leads to evaporation of liquids and formation of vapour bubbles, which, when liquid pressure increases, implode, generating locally very high pressure, and cause erosion on sliding surfaces.

### 4.4.9 Electroerosion

A potential difference between journal and bearing can lead to an electric arc with locally high current flow which damages journal and bearing surface.

4.4.10 Hydrogen diffusion

Hydrogen can be incorporated in the steel backing or in an electroplated layer of the bearing. If hydrogen diffusion is blocked by a layer, blisters occur.

4.4.11 Bond failure

Bond failure is delamination between lining and backing or between layers. A metallographic examination is required to distinguish it from other damage characterizations.

4.5 Relationship between damage appearance and damage characterizations

Damage characterization and damage appearance alter with the progress of damage from a primary to a secondary characteristic (see Figure 1).

Different damage characterizations can correspond to the same damage appearance.

One damage characterization can correspond to various damage appearances.

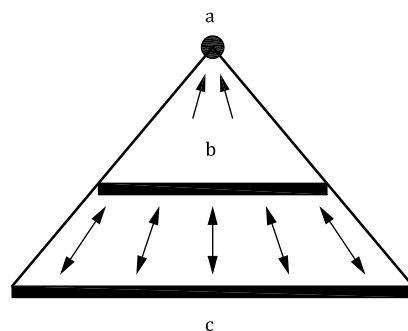
Multiple damage characteristics can be found in one failure event.

The damage characteristics provide the basis for analysing the cause (see Figure 2).

Typical relationships are shown in Table 1 for damage to sliding surface and to bearing back. In most cases, Table 1 is the guideline for diagnosis of the final damage cause from the damage appearances via the damage characteristics.



Figure 1 — Damage appearances altering with the progress from primary to secondary characteristics



- Key**
- a Damage cause.
  - b Damage characteristics.
  - c Damage appearances.

Figure 2 — Damage characteristics provide the basis for analysing the cause

## 5 Guidelines for damage analysis

**iTeh STANDARD PREVIEW**  
**(standards.iteh.ai)**

[ISO 7146-1:2019](https://standards.iteh.ai/catalog/standards/sist/f1e59744-c677-4d3d-8cb1-d59b1cad7aa0/iso-7146-1-2019)

<https://standards.iteh.ai/catalog/standards/sist/f1e59744-c677-4d3d-8cb1-d59b1cad7aa0/iso-7146-1-2019>

Table 1 — Interaction of damage appearances and damage characterizations

Damage appearance													Damage characterizations	Subclause			
Depositions	Creep deformation	Deformations due to temperature cycles	Thermal cracks	Fatigue cracks	Material relief (loss of bond)	Frictional corrosion	Melting out, seizure	Polishing, scoring	Trace of mixed lubrication, worn material	Blue, black colour	Corrosion	Fluid erosion	Embedded particles, particulate migration tracks, formation of wire wool	Electric arc craters	Cavitation erosion appearance: material worn out		
x	x		x						x							Static overload	6.2
				x	x											Dynamic overload <sup>a</sup>	6.3
				x		x										Dynamic overload <sup>b</sup>	7.2
								x	x							Wear by friction <sup>a</sup>	6.4
								x								Wear by friction <sup>b</sup>	7.3
x	x		x						x							Overheating	6.5
									x							Insufficient lubrication (starvation)	6.6
x									x			x				Contamination (particles, chemicals) <sup>a</sup>	6.7
x									x			x				Contamination (particles, chemicals) <sup>b</sup>	7.4
															x	Cavitation erosion	6.8 and ISO 7146-2
														x		Electro-erosion	6.9
					x											Hydrogen diffusion	6.10
					x											Bond failure	6.11

<sup>a</sup> Damage to the sliding surface.

<sup>b</sup> Damage to the bearing back.

iTeh STANDARD PREVIEW (standards.iteh.ai)

ISO 7146-1:2019  
<https://standards.iteh.ai/catalog/standards/sst/f1e59744-e677-4d3e-8cb1-d59b1cad7aa0/iso-7146-1-2019>

## 5.1 General

Analysis should be undertaken only by experts experienced in bearing metallurgy, bearing technology and bearing damage. Damage analyses based on photos alone are mostly unsuccessful.

The following steps are a guideline for damage analysis.

### 5.2 Step 1

Establish service life. There is significant difference between damage after a short service life and damage after a long service life. With both cases, similar damage appearances occur, but the cause is usually different.

Typical causes of damage after short service life: faults in geometry or assembling, dirt, effect from a previous damage, modified service conditions since last start up.

Typical cause of damage after long service life: modified service conditions.

Typical cause of damage after very long service life: reduced dynamic material capability due to fatigue.

### 5.3 Step 2

Strict differentiation between damage characterization and damage appearance is important. For a thorough analysis, all visible damage appearances shall be evaluated and combined in one or more damage characterizations, based on [Table 1](#).

### 5.4 Step 3

Take into consideration the total system: bearing — shaft — lubricant — housing.

It is helpful to make a chemical analysis of a sample from the bearing layer and to check its microstructure. If necessary, lubricant and filter content should be analysed.

### 5.5 Step 4

All information in connection with the period before the detected damage and the period during the damage should be brought together.

### 5.6 Step 5

Reviewing the initial list of damage characteristics together with the information from steps 3 and 4 usually leads to a reduction of the number of damage characteristics under consideration. This leads to the possible damage cause.

See [Annex A](#) for an example of use of [Table 1](#).

## 6 Damage to the bearing surface — Damage characteristics, typical damage appearances and possible damage causes

### 6.1 General

A discussion of damage to the bearing surface follows. For each damage characterization given in [4.4](#), typical damage appearances, possible damage causes and typical examples are given.

## 6.2 Static overload

### 6.2.1 Typical damage appearances

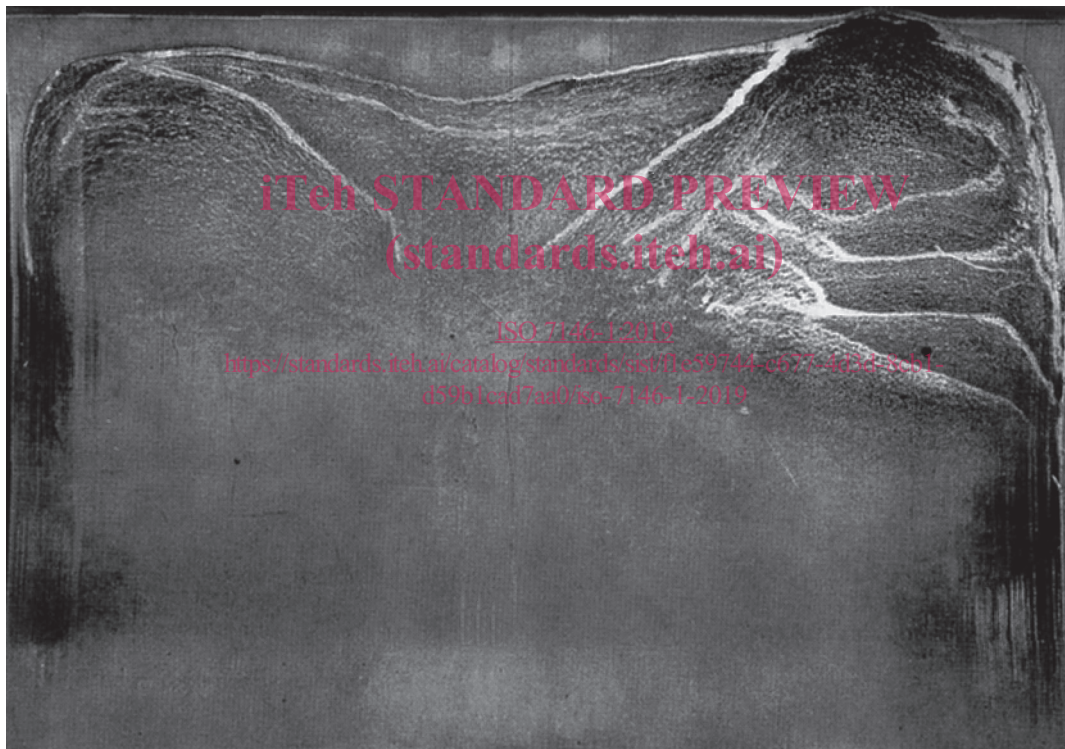
- Creep deformation: shallow depressions of bearing material in the region of maximum load and temperature, beginning smooth and ending in crack-free semicircular bulges in the direction of rotation, sometimes like crests of waves (see [Figure 3](#)).
- Traces of mixed lubrication (see [Figure 4](#)), depositions, thermal cracks.

### 6.2.2 Possible damage causes

Loading of the bearing was higher than that allowed for in the design and/or the bearing temperature was higher than estimated for an extended period.

### 6.2.3 Typical examples

See [Figures 3](#) and [4](#).



**Figure 3 — Creep deformation, shown by crack-free semicircular bulges in the direction of rotation (material: steel/tin-based white metal)**

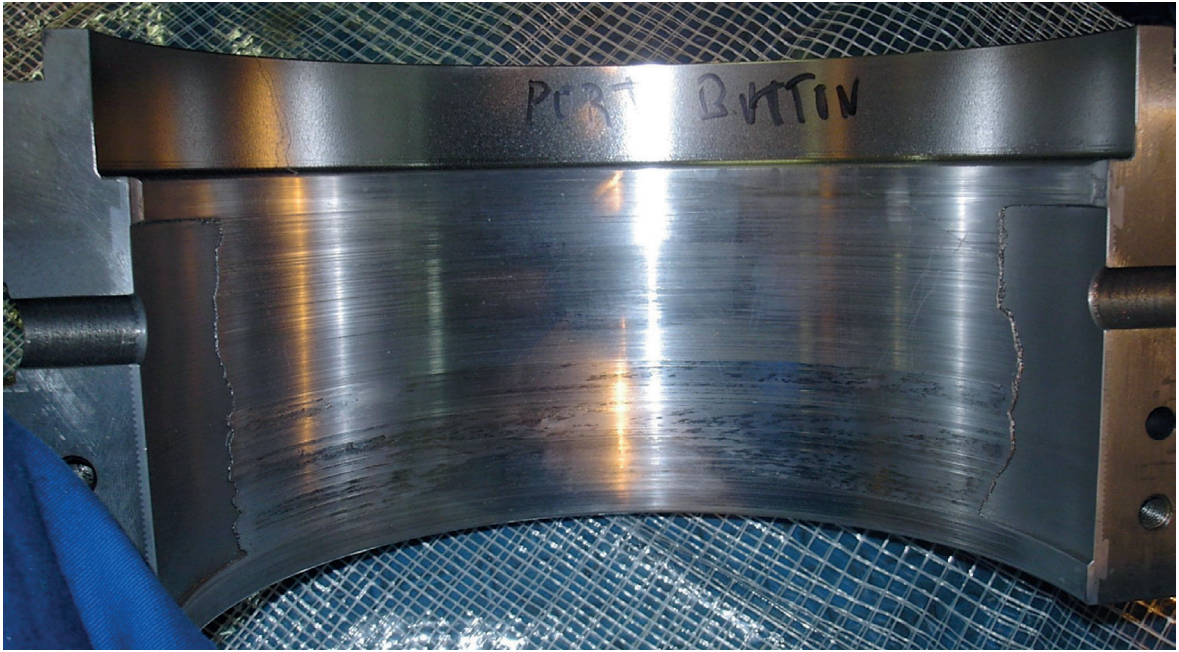


Figure 4 — Propeller shaft bearing, showing the effects of too slow a speed in relation to load capacity (material: steel/tin-based white metal)

iTeh STANDARD PREVIEW

### 6.3 Dynamic overload (standards.iteh.ai)

#### 6.3.1 Typical damage appearances ISO 7146-1:2019

Fatigue cracks are cracks which extend from the sliding surface in the loaded zone propagating as a network. The cracks change direction above the bonding area.

Lining material from the backing is the final result of the development of fatigue cracks (see [Figure 5](#)).

See also possible damage appearances such as frictional corrosion on the bearing back ([Clause 7](#)).

#### 6.3.2 Possible damage causes

The cracks start when the fatigue limit of the bearing material is exceeded due to high dynamic load at the operating temperature. The damage is not based on bond faults.

#### 6.3.3 Typical examples

See [Figures 5](#) to [12](#).