

DRAFT INTERNATIONAL STANDARD

ISO/DIS 14229-2

ISO/TC 22/SC 31

Secretariat: DIN

Voting begins on:
2021-02-11

Voting terminates on:
2021-05-06

Road vehicles — Unified diagnostic services (UDS) —

Part 2: Session layer services

Véhicules routiers — Services de diagnostic unifiés (SDU) —

Partie 2: Séquence des couches de services

ICS: 43.180

iTeh STANDARD PREVIEW
(standards.iteh.ai)

[ISO/DIS 14229-2](https://standards.iteh.ai/catalog/standards/sist/d34d4386-f834-4bee-ba90-0cc4c46ceb60/iso-dis-14229-2)

<https://standards.iteh.ai/catalog/standards/sist/d34d4386-f834-4bee-ba90-0cc4c46ceb60/iso-dis-14229-2>

THIS DOCUMENT IS A DRAFT CIRCULATED FOR COMMENT AND APPROVAL. IT IS THEREFORE SUBJECT TO CHANGE AND MAY NOT BE REFERRED TO AS AN INTERNATIONAL STANDARD UNTIL PUBLISHED AS SUCH.

IN ADDITION TO THEIR EVALUATION AS BEING ACCEPTABLE FOR INDUSTRIAL, TECHNOLOGICAL, COMMERCIAL AND USER PURPOSES, DRAFT INTERNATIONAL STANDARDS MAY ON OCCASION HAVE TO BE CONSIDERED IN THE LIGHT OF THEIR POTENTIAL TO BECOME STANDARDS TO WHICH REFERENCE MAY BE MADE IN NATIONAL REGULATIONS.

RECIPIENTS OF THIS DRAFT ARE INVITED TO SUBMIT, WITH THEIR COMMENTS, NOTIFICATION OF ANY RELEVANT PATENT RIGHTS OF WHICH THEY ARE AWARE AND TO PROVIDE SUPPORTING DOCUMENTATION.

This document is circulated as received from the committee secretariat.



Reference number
ISO/DIS 14229-2:2021(E)

© ISO 2021

iTeh STANDARD PREVIEW
(standards.iteh.ai)

[ISO/DIS 14229-2](https://standards.iteh.ai/catalog/standards/sist/d34d4386-f834-4bee-ba90-0cc4c46ceb60/iso-dis-14229-2)

<https://standards.iteh.ai/catalog/standards/sist/d34d4386-f834-4bee-ba90-0cc4c46ceb60/iso-dis-14229-2>



COPYRIGHT PROTECTED DOCUMENT

© ISO 2021

All rights reserved. Unless otherwise specified, or required in the context of its implementation, no part of this publication may be reproduced or utilized otherwise in any form or by any means, electronic or mechanical, including photocopying, or posting on the internet or an intranet, without prior written permission. Permission can be requested from either ISO at the address below or ISO's member body in the country of the requester.

ISO copyright office
CP 401 • Ch. de Blandonnet 8
CH-1214 Vernier, Geneva
Phone: +41 22 749 01 11
Email: copyright@iso.org
Website: www.iso.org

Published in Switzerland

Contents

	Page
Foreword	v
Introduction	vi
1 Scope	1
2 Normative references	1
3 Terms and definitions	1
4 Symbols and abbreviated terms	2
4.1 Symbols	2
4.2 Abbreviated terms	2
5 Conventions	2
6 Session layer services	3
6.1 Service interface	3
6.2 Service interface parameters	3
6.3 Service interface primitives	3
7 Service interface (SI) definition from application layer to session layer	5
7.1 SI — S_Data.req, S_Data.ind, and S_Data.conf service interface	5
7.2 SI — S_Data.req, S_Data.ind, and S_Data.conf service interface parameter mapping	5
7.3 SI — S_PDU mapping onto T_PDU and vice versa for message transmission	6
7.4 SI — S_Data.req	7
7.5 SI — S_Data.conf	7
7.6 SI — S_Data.ind	7
8 Service primitive parameters (SPP)	8
8.1 SPP – General	8
8.2 SPP – Data type definitions	8
8.3 SPP – S_Mtype, session layer message type	8
8.4 SPP – S_TAtype, session layer target address type	8
8.5 SPP – S_TA, session layer target address	9
8.6 SPP – S_SA, session layer source address	9
8.7 SPP – S_AE, session layer address extension	9
8.8 SPP – S_Length, session layer length of S_Data	9
8.9 SPP – S_Data, session layer data of PDU	9
8.10 SPP – S_Result, session layer result	10
9 Timing parameter definition	10
9.1 General application timing considerations	10
9.1.1 Server	10
9.1.2 Client	11
9.2 Application timing parameter definitions – defaultSession	12
9.3 Example for P _{4Server} without enhanced response timing	17
9.4 Example for P _{4Server} with enhanced response timing	18
9.5 Session timing parameter definitions for the non-default session	20
9.6 Client and server timer resource requirements	22
9.7 Error handling	22
10 Timing handling during communication	24
10.1 Physical communication	24
10.1.1 Physical communication during defaultSession – without SOM.ind	24
10.1.2 Physical communication during defaultSession – with SOM.ind	24
10.1.3 Physical communication during defaultSession with enhanced response timing	25
10.1.4 Physical communication during a non-default session	27
10.2 Functional communication	33
10.2.1 Functional communication during defaultSession – without SOM.ind	33

10.2.2	Functional communication during defaultSession – with SOM.ind	35
10.2.3	Functional communication during defaultSession with enhanced response timing – with SOM.ind	36
10.2.4	Functional communication during non-default session – with SOM.ind	37
10.3	Minimum time between client request messages	41
Annex A (informative) T_PDU interface		49
Annex B (informative) Vehicle diagnostic OSI layer architecture examples		50
Bibliography		54

iTeh STANDARD PREVIEW (standards.iteh.ai)

[ISO/DIS 14229-2](https://standards.iteh.ai/catalog/standards/sist/d34d4386-f834-4bee-ba90-0cc4c46ceb60/iso-dis-14229-2)

<https://standards.iteh.ai/catalog/standards/sist/d34d4386-f834-4bee-ba90-0cc4c46ceb60/iso-dis-14229-2>

Foreword

ISO (the International Organization for Standardization) is a worldwide federation of national standards bodies (ISO member bodies). The work of preparing International Standards is normally carried out through ISO technical committees. Each member body interested in a subject for which a technical committee has been established has the right to be represented on that committee. International organizations, governmental and non-governmental, in liaison with ISO, also take part in the work. ISO collaborates closely with the International Electrotechnical Commission (IEC) on all matters of electrotechnical standardization.

The procedures used to develop this document and those intended for its further maintenance are described in the ISO/IEC Directives, Part 1. In particular, the different approval criteria needed for the different types of ISO documents should be noted. This document was drafted in accordance with the editorial rules of the ISO/IEC Directives, Part 2 (see www.iso.org/directives).

Attention is drawn to the possibility that some of the elements of this document may be the subject of patent rights. ISO shall not be held responsible for identifying any or all such patent rights. Details of any patent rights identified during the development of the document will be in the Introduction and/or on the ISO list of patent declarations received (see www.iso.org/patents).

Any trade name used in this document is information given for the convenience of users and does not constitute an endorsement.

For an explanation of the voluntary nature of standards, the meaning of ISO specific terms and expressions related to conformity assessment, as well as information about ISO's adherence to the World Trade Organization (WTO) principles in the Technical Barriers to Trade (TBT), see www.iso.org/iso/foreword.html.

This document was prepared by Technical Committee ISO/TC 22, *Road vehicles*, Subcommittee SC 31, *Data communication*.

This third edition cancels and replaces the second edition (ISO 14229-2:2012), which has been technically revised.

The main changes compared to the previous edition are as follows:

- restructured the document;
- introduction of requirement numbers and names;
- technical content improvements based on implementation feedback from the automotive industry.

A list of all parts in the ISO 14229 series can be found on the ISO website.

Any feedback or questions on this document should be directed to the user's national standards body. A complete listing of these bodies can be found at www.iso.org/members.html.

Introduction

ISO 14229 has been established in order to define common requirements for diagnostic systems, whatever the serial data link is.

To achieve this, ISO 14229 is based on the Open Systems Interconnection (OSI) Basic Reference Model in accordance with ISO 7498-1^[1] and ISO/IEC 10731^[2], which structures communication systems into seven layers. When mapped on this model, the services used by a diagnostic tester (client) and an Electronic Control Unit (ECU, server) are structured into the following layers:

- Application layer (layer 7) specified in ISO 14229-1 and ISO 14229-x;
- Presentation layer (layer 6) specified in ISO 14229-1 and ISO 14229-x;
- Session layer services (layer 5) specified in ISO 14229-2 and ISO 14229-x.

Figure 1 illustrates the ISO 14229-2 documents reference according to OSI model.

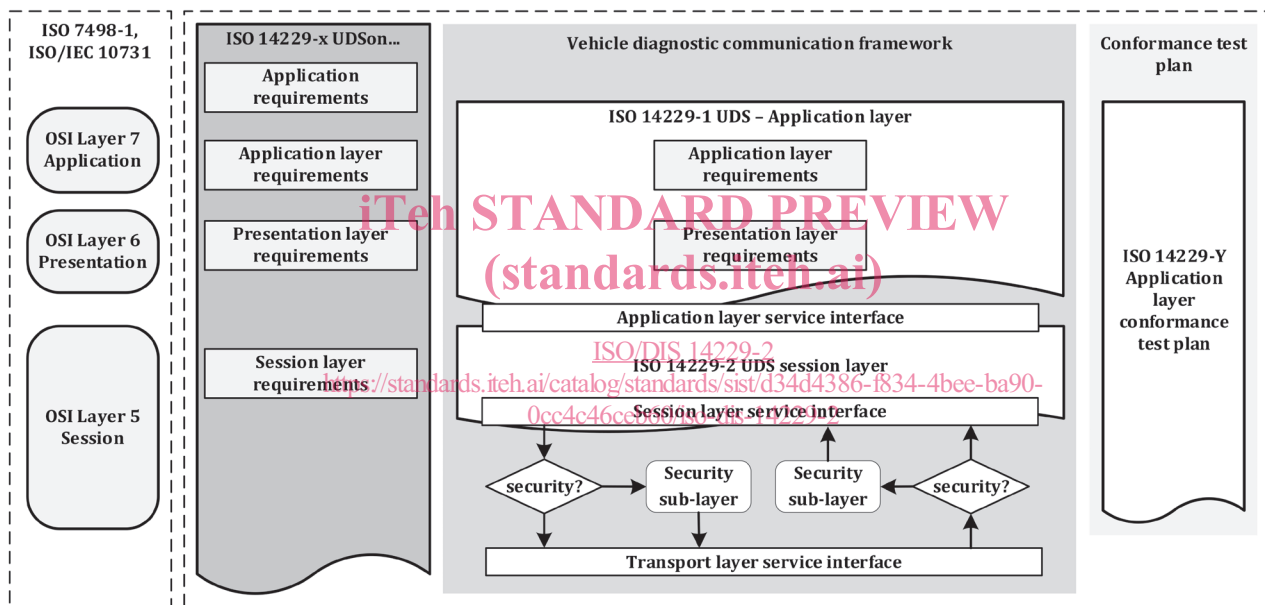


Figure 1 — ISO 14229-2 documents reference according to OSI model

Road vehicles — Unified diagnostic services (UDS) —

Part 2: Session layer services

1 Scope

This document specifies common session layer services and requirements to provide independence between unified diagnostic services (ISO 14229-1) and all transport protocols and network layer services (e.g. ISO 13400-2 DoIP, ISO 15765-2 DoCAN, ISO 10681-2 Communication on FlexRay, ISO 14230-2 DoK-Line, and ISO 20794-3 CXPI).

This document specifies a common service primitive interface between OSI layer 5 (Session) and layer 4 (Transport) via so-called service request/confirmation/indication primitives.

[Annex B](#) (informative) describes vehicle diagnostic OSI layer architecture examples.

2 Normative references

The following documents are referred to in the text in such a way that some or all of their content constitutes requirements of this document. For dated references, only the edition cited applies. For undated references, the latest edition of the referenced document (including any amendments) applies.

ISO 14229-1, *Road vehicles — Unified diagnostic services (UDS) — Part 1: Application layer*

<https://standards.iteh.ai/catalog/standards/sist/d34d4386-f834-4bee-ba90-0cc4c46ceb60/iso-dis-14229-2>

3 Terms and definitions

For the purposes of this document, the terms and definitions given in ISO 14229-1, ISO/IEC 7498-1^[1], and the following apply.

ISO and IEC maintain terminological databases for use in standardization at the following addresses:

- IEC Electropedia: available at <http://www.electropedia.org/>
- ISO Online browsing platform: available at <https://www.iso.org/obp>

3.1

gateway

networking device that transfers the PDU on different OSI layers

EXAMPLE A network device that enables communication between control module networks that uses different communication protocols, different communication rates, etc. That includes, but is not limited to, gateway functionalities like bridge, switch, router or application layer routing.

3.2

router

networking device that transfers the PDU on OSI layers 3 and 4

3.3

switch

networking device that transfers the PDU on OSI layer 2

4 Symbols and abbreviated terms

4.1 Symbols

— empty cell/undefined

4.2 Abbreviated terms

Diag	diagnostics
DiagNormAddr	diagnostic message with normal addressing
DiagNormFixAddr	diagnostic message with normal fixed addressing
DiagExtAddr	diagnostic message with extended addressing
ECU	electronic control unit
OSI	open systems interconnection
RDiag	remote diagnostics
RDiagMixAddr	remote diagnostic message with mixed addressing
S_AE	session layer address extension
S_Data	session layer data transfer service name
S_Length	session layer length of data
S_Mtype	session layer message type
S_PDU	session layer protocol data unit
S_SA	session layer source address
S_TA	session layer target address
S_TAtype	session layer target address type
SecureDiag	secure diagnostics
SecureRDiag	secure remote diagnostics
SI	service identifier
SOM	start of message
SPP	service primitive parameter

5 Conventions

This document is based on OSI service conventions as specified in ISO/IEC 10731^[2].

6 Session layer services

6.1 Service interface

The service interface defines a set of services that are needed to access the functions offered by the session layer, i.e. transmission/reception of data and setting of protocol parameters.

The session layer services have the same general structure. The service primitives define how a service user (e.g. diagnostic application) cooperates with a service provider (e.g. session layer). To define the services, three types of service primitives are specified:

- a service request primitive `S_Data.request`, used by the higher application layer to pass control information or data required to be transmitted to the session layer (i.e. the service provider is being requested by the service user to process control information or to transmit data);
- a service indication primitive `S_Data.indication`, used by the session layer to pass status information and received data to the higher application layer (i.e. the service user is being informed by the service provider about an internal event of the session layer or the service request of a peer protocol layer entity service user);
- a service confirmation primitive `S_Data.confirm` used by the session layer to pass status information to the application layer (i.e. the service user is being informed by service provider about the result of a preceding service request of the service user);

6.2 Service interface parameters

The session layer services shall have the same general format. Service primitives shall be written in the form:

```
service_name.type (
    parameter A,
    parameter B,
    parameter C,
    [parameter X],
    ...
)
```

where:

- "service_name" is the name of the service (e.g. `S_Data`),
- "type" indicates the type of the service primitive (e.g. request, indication, confirm),
- "parameter A, ..." is the `S_PDU` (Session layer Protocol Data Unit) as a list of values passed by the service primitive (e.g. addressing information, Data, Length, Result),
- "parameter A, parameter B, parameter C" are mandatory parameters that shall be included in all service calls, "[parameter X]" is an optional parameter that is included if specific conditions are fulfilled.

6.3 Service interface primitives

[Figure 2](#) shows the session layer service primitives of a message transmission with a `T_Data.ind` reception at the session layer of the receiver side from the lower OSI layer.

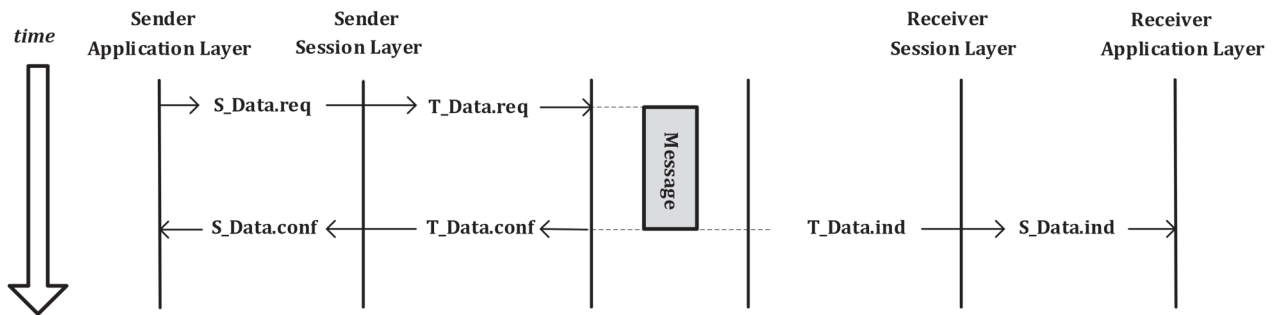
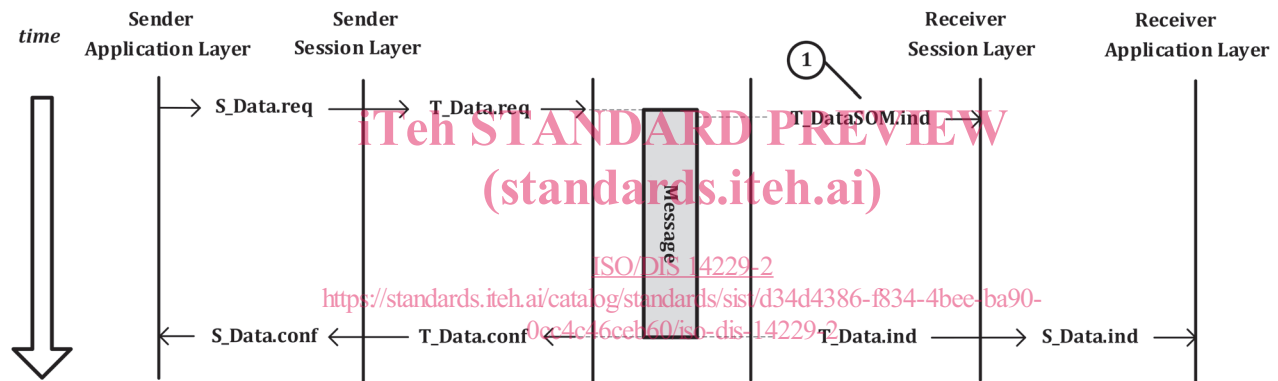


Figure 2 — Session layer service primitives – T_Data.ind message reception

Figure 3 shows the session layer service primitives of a message transmission with a T_DataSOM.ind reception at the beginning of the message and a T_Data.ind reception at the end of the message at the session layer of the receiver side from the lower OSI layer.

for a multiple frame message.



Key

- 1 StartOfMessage transport layer data indication e.g. ISO 15765-2

Figure 3 — Session layer service primitives – T_DataSOM.ind and T_Data.ind reception

The following communication scenarios shall be distinguished:

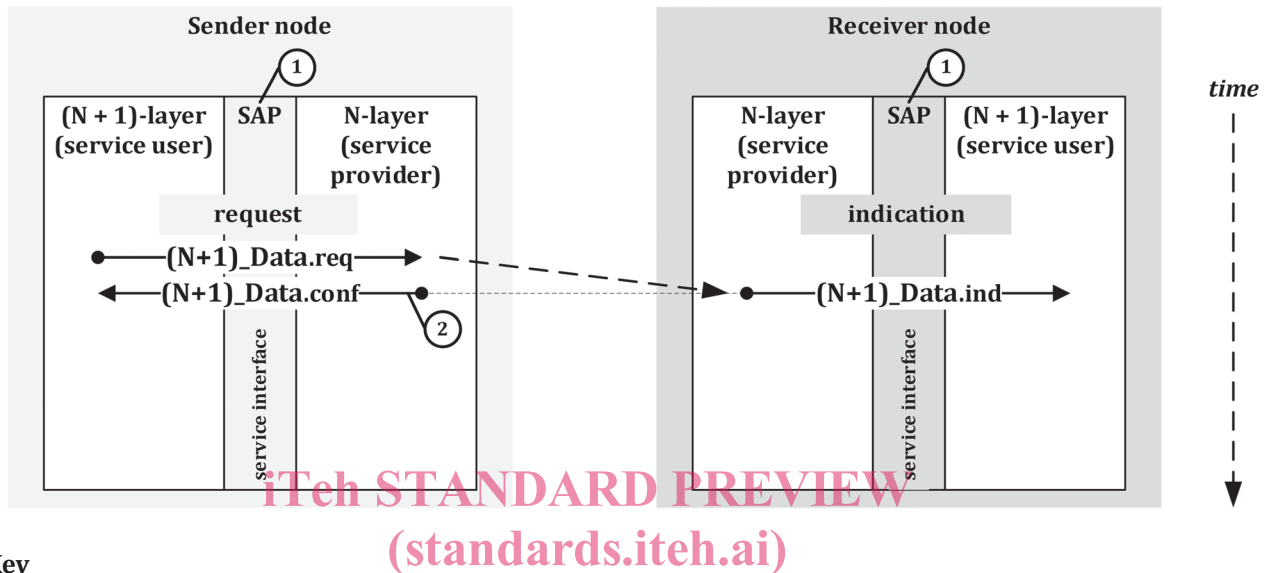
- a) physical communication during
 - 1) default session, and
 - 2) non-default session — session handling required.
- b) functional communication during
 - 3) default session, and
 - 4) non-default session — session handling required.

7 Service interface (SI) definition from application layer to session layer

7.1 SI — S_Data.req, S_Data.ind, and S_Data.conf service interface

The service interface defines the service and parameter mapping from the application layer to the session layer.

Figure 4 shows the S_Data.req, S_Data.ind, and S_Data.conf service interface.



Key

- 1 service access point
- 2 read back from N-layer service provider

Figure 4 — S_Data.req and S_Data.ind service interface

7.2 SI — S_Data.req, S_Data.ind, and S_Data.conf service interface parameter mapping

This requirement specifies the application service interface and parameter mapping between session layer and the lower OSI layers.

REQ	0.1 SI — S_Data.req, S_Data.ind, and S_Data.conf service interface parameter mapping
The S_Data.req, S_Data.ind, and S_Data.conf service interface parameter mapping shall be implemented as specified in Table 1.	

Table 1 — S_Data.req and S_Data.ind service interface parameter mapping

Application layer (service user)	Session layer (service provider)	A_Data.req and A_Data.ind parameter validity		
		.req	.ind	.conf
A_Mtype	S_Mtype	X ^a	X ^a	X ^a
A_TAtype	S_TAtype	X ^a	X ^a	X ^a
A_TA	S_TA	X ^a	X ^a	X ^a
A_SA	S_SA	X ^a	X ^a	X ^a
^a supported = "X"; ^b not supported = "—".				

Table 1 (continued)

Application layer (service user)	Session layer (service provider)	A_Data.req and A_Data.ind parameter validity		
		.req	.ind	.conf
A_Length	S_Length	X ^a	X ^a	— ^b
A_AE	S_AE	X ^a	X ^a	X ^a
A_Data	S_Data	X ^a	X ^a	— ^b
A_Result	S_Result	— ^b	— ^b	X ^a
^a supported = “X”; ^b not supported = “—”.				

7.3 SI — S_PDU mapping onto T_PDU and vice versa for message transmission

The parameters of the session layer protocol data unit defined to request the transmission of a diagnostic service request/response are mapped onto the parameters of the transport layer protocol data unit for the transmission of a message in the client/server. Annex A (informative) specifies the T_PDU interface and shall be followed.

The parameters of the transport layer protocol data unit defined for the reception of a message are mapped as follows onto the parameters of the session layer protocol data unit for the confirmation/indication of the reception of a diagnostic response/request.

The transport layer confirmation of the successful transmission of the message (T_Data.conf) is forwarded to the application, because it is needed in the application for starting those actions, which shall be executed immediately after the transmission of the request/response message (e.g. ECUReset, bit rate change, etc.).

The transport/network layer indication for the reception of a StartOfMessage T_PDU (T_DataSOM.ind) e.g. ISO 15765-2 is not forwarded to the application layer, because it is only used within the session layer to perform the session layer timing (see Clause 9). Therefore, no mapping of the T_DataSOM.ind T_PDU onto an S_PDU is defined.

Table 2 defines the mapping of session layer S_PDU onto transport layer T_PDU and vice versa.

Table 2 — Mapping of session layer S_PDU onto transport layer T_PDU and vice versa

S_PDU parameter (Session layer Protocol Data Unit)	Description	T_PDU parameter (Transport layer Protocol Data Unit)	Description
S_Mtype	Session layer message type	T_Ptype	Transport layer packet type
S_SA	Session layer source address	T_SA	Transport layer source address
S_TA	Session layer target address	T_TA	Transport layer target address
S_TAtype	Session layer target address type	T_TAtype	Transport layer target address type
S_AE ^a	Session layer address extension	T_AE ^a	Transport layer address extension
S_Data[1] – S_Data[n]	Session layer data	T_Data[1] – T_Data[n]	Transport layer data
S_Length	Session layer data Length	T_Length	Transport/Network layer Data Length
^a If Mtype = diagnostics/secure diagnostics, then the address information shall consist of the parameters SA, TA, and TAtype. If Mtype = remote diagnostics/secure remote diagnostics, then the address information shall consist of the parameters SA, TA, TAtype, and AE.			

Table 2 (continued)

S_PDU parameter (Session layer Protocol Data Unit)	Description	T_PDU parameter (Transport layer Pro- tocol Data Unit)	Description
S_Result	Session layer result	T_Result	Transport layer result
<p>^a If Mtype = diagnostics/secure diagnostics, then the address information shall consist of the parameters SA, TA, and TAtype.</p> <p>If Mtype = remote diagnostics/secure remote diagnostics, then the address information shall consist of the parameters SA, TA, TAtype, and AE.</p>			

7.4 SI — S_Data.req

The service primitive requests transmission of S_Data with S_Length number of bytes from the sender to the receiver peer entities identified by the address information in S_SA, S_TA, S_TAtype, and S_AE.

If the S_Data.req service is called; the session layer signals the completion (or failure) of the message transmission to the service user by means of the issuing of an S_Data.conf service call.

```
S_Data.req (
    S_Mtype,
    S_SA,
    S_TA,
    S_TAtype,
    [S_AE],
    S_Data [Data#1, Data#2, ..., Data#n ],
    S_Length
)
```

iTech STANDARD PREVIEW
(standards.iteh.ai)

7.5 SI — S_Data.conf

ISO/DIS 14229-2

<https://standards.iteh.ai/catalog/standards/sist/d34d4386-f834-4bee-ba90->

The S_Data.conf service is issued by the session layer. The service primitive confirms the completion of an S_Data.req service identified by the address information in S_SA, S_TA, S_TAtype, and S_AE. The parameter S_Result provides the status of the service request.

```
S_Data.conf (
    S_SA,
    S_TA,
    S_TAtype,
    [S_AE],
    S_Result
)
```

7.6 SI — S_Data.ind

The S_Data.indication service is issued by the session layer. The service primitive shall indicate S_Result events and delivers S_Data with S_Length bytes received from a peer protocol entity identified by the address information in S_SA, S_TA, S_TAtype to the adjacent upper layer. The parameters S_Data and S_Length shall only be valid if S_Result equals S_OK.

```
S_Data.ind (
    S_Mtype,
    S_SA,
    S_TA,
    S_TAtype,
    [S_AE],
    S_Data [Data#1, Data#2, ..., Data#n ],
    S_Length,
    S_Result
)
```

8 Service primitive parameters (SPP)

8.1 SPP – General

Clause 8 specifies the service primitive parameters and data types, which are used by the application layer services.

8.2 SPP – Data type definitions

REQ	0.2 SPP – Data type definitions
	<p>The data types shall be in accordance to:</p> <ul style="list-style-type: none"> — Enum = 8-bit enumeration — Unsigned Byte = 8-bit unsigned numeric value — Unsigned Word = 16-bit unsigned numeric value — Unsigned Long = 32-bit unsigned numeric value — Byte Array = sequence of 8-bit aligned data — Bit String = 8-bit binary coded

8.3 SPP – S_Mtype, session layer message type

The parameter Mtype is used to identify the type and range of address information parameters included in a service call. This document specifies a range of two values for this parameter.

REQ	0.3 SPP – S_Mtype, session layer message type
	<p>The S_Mtype parameter shall be of data type Enum and shall be used to identify the message type and range of address information included in a service call.</p> <ul style="list-style-type: none"> — If S_Mtype = diagnostics (Diag)/secure diagnostics (SecureDiag), then the address information shall consist of the parameters S_SA, S_TA, and S_TAtype. — If S_Mtype = remote diagnostics (RDiag)/secure remote diagnostics (SecureRDiag), then the address information shall consist of the parameters S_SA, S_TA, S_TAtype, and S_AE. <p>Range: [Diag, RDiag, SecureDiag, SecureRDiag]</p>

8.4 SPP – S_TAtype, session layer target address type

The parameter S_TAtype is a configuration attribute to the S_TA parameter. It is used to encode the communication model used by the communicating peer entities. Two communication models are specified: '1 to 1' communication, called physical addressing, and '1 to n' communication, called functional addressing.

REQ	0.4 SPP – S_TAtype, session layer target address type
	<p>The S_TAtype parameter shall be of data type Enum and shall be used to identify the target address type to be used with the request address.</p> <p>Range: [physical, functional]</p>

8.5 SPP – S_TA, session layer target address

S_TA parameter is used to encode the receiving session layer protocol entity. The parameter S_TA is used to encode client and server identifiers.

REQ	0.5 SPP – S_TA, session layer target address
The S_TA parameter shall be of data type <code>Unsigned Word</code> and shall contain the target address of the node.	
Range: [0000 ₁₆ to FFFF ₁₆]	

8.6 SPP – S_SA, session layer source address

S_SA parameter is used to encode the sending session layer protocol entity. The parameter S_SA is used to encode client and server identifiers.

REQ	0.6 SPP – S_SA, session layer source address
The S_SA parameter shall be of data type <code>Unsigned Word</code> and shall contain the source address of the node.	
Range: [0000 ₁₆ to FFFF ₁₆]	

8.7 SPP – S_AE, session layer address extension

S_SA parameter is used to encode the sending session layer protocol entity. The parameter S_SA is used to encode client and server identifiers.

REQ	0.7 SPP – S_AE, session layer address extension
The S_AE parameter shall be of data type <code>Unsigned Word</code> and shall contain the source address of the node.	
Range: [0000 ₁₆ to FFFF ₁₆]	

8.8 SPP – S_Length, session layer length of S_Data

This parameter includes the length of data to be transmitted/received.

REQ	0.8 SPP – S_Length, session layer length of S_Data
The S_Length parameter shall be of data type <code>Unsigned Long</code> and shall contain the length of the S_Data to be transmitted/received.	
Range: [0000 0000 ₁₆ to FFFF FFFF ₁₆]	

8.9 SPP – S_Data, session layer data of PDU

This parameter includes data to be exchanged by the higher OSI layer entities.

REQ	0.9 SPP – S_Data, session layer data of PDU
The S_Data parameter shall be of data type <code>Byte Array</code> and shall contain the message data content of the request or response message to be transmitted/received.	
Range: [00 ₁₆ to FF ₁₆]	