



Designation: D6579 – 11

# Standard Practice for Molecular Weight Averages and Molecular Weight Distribution of Hydrocarbon, Rosin and Terpene Resins by Size-Exclusion Chromatography<sup>1</sup>

This standard is issued under the fixed designation D6579; the number immediately following the designation indicates the year of original adoption or, in the case of revision, the year of last revision. A number in parentheses indicates the year of last reapproval. A superscript epsilon ( $\epsilon$ ) indicates an editorial change since the last revision or reapproval.

## 1. Scope\*

1.1 This practice covers the determination of apparent molecular weight (MW) averages and molecular weight distributions (MWD) for THF-soluble hydrocarbon, rosin and terpene resins by size-exclusion chromatography (SEC). This technique is not absolute; it requires calibration with standards of known molecular weight. This practice is applicable to resins containing molecular-weight components that have elution volumes falling within the elution volume range defined by polystyrene standards.

NOTE 1—SEC is also known as gel permeation chromatography (GPC).

1.2 SEC systems employ low-volume liquid chromatography components and columns packed with relatively small (generally 3 to 20  $\mu\text{m}$ ) microporous particles. High-performance liquid chromatography instrumentation and automated data handling systems for data acquisition and processing are also required.

1.3 The values stated in SI units are to be regarded as the standard. The values given in parentheses are for information only.

1.4 *This standard does not purport to address all of the safety concerns, if any, associated with its use. It is the responsibility of the user of this standard to establish appropriate safety and health practices and determine the applicability of regulatory limitations prior to use.*

## 2. Referenced Documents

2.1 *ASTM Standards:*<sup>2</sup>

[D804 Terminology Relating to Pine Chemicals, Including Tall Oil and Related Products](#)

<sup>1</sup> This practice is under the jurisdiction of ASTM Committee D01 on Paint and Related Coatings, Materials, and Applications and is the direct responsibility of Subcommittee D01.34 on Pine Chemicals and Hydrocarbon Resins.

Current edition approved June 1, 2011. Published June 2011. Originally approved in 2000. Last previous edition approved in 2006 as D6579 – 06. DOI: 10.1520/D6579-11.

<sup>2</sup> For referenced ASTM standards, visit the ASTM website, [www.astm.org](http://www.astm.org), or contact ASTM Customer Service at [service@astm.org](mailto:service@astm.org). For *Annual Book of ASTM Standards* volume information, refer to the standard's Document Summary page on the ASTM website.

[D3016 Practice for Use of Liquid Exclusion Chromatography Terms and Relationships](#)  
[D6440 Terminology Relating to Hydrocarbon Resins](#)

## 3. Terminology

3.1 For definitions of size-exclusion chromatography terms, see Practice [D3016](#).

3.2 For definition of terpene resin, see Terminology [D804](#).

3.3 For definitions of resin terms, see Terminology [D6440](#).

## 4. Summary of Practice

4.1 In this practice, a dilute solution of a hydrocarbon, rosin or terpene resin sample is injected into a liquid mobile phase containing the same solvent used to prepare the resin solution. The mobile phase transports the resin into and through a chromatography column (or set of columns connected in series) packed with a rigid or semirigid, porous substrate that separates the molecules according to their size in solution. A detector monitors the eluate as a function of elution volume (or time). Upon emerging from the column(s), the fractions of size-separated molecules are detected and their elution volumes (or times) and (usually) concentrations recorded. Through calibration, the elution volumes (or times) are converted to apparent molecular weights, and various molecular weight parameters for the sample resin are calculated from the molecular weight/concentration data.

## 5. Significance and Use

5.1 The MW averages and the MWD are important characteristics of a resin. They may be used for a variety of correlations for fundamental studies, processing, or product applications. The MW and MWD values may also be used for production quality control of resins.

5.2 *Limitations*—Comparison of SEC molecular weight values should be made only if the data were obtained under identical chromatographic conditions.

## 6. Apparatus

6.1 *Solvent Reservoir*—The solvent reservoir must hold sufficient solvent to ensure consistency of composition for a

\*A Summary of Changes section appears at the end of this standard

number of analyses. The reservoir should isolate the solvent from the atmosphere, permit control of the environment in contact with the solvent, and be inert to the solvent employed. Some means of agitation (for example, magnetic stirring) is recommended to ensure uniform composition.

**6.2 Solvent Pumping System**—The principal requirement of the pumping system is production of a relatively constant and pulseless flow of solvent through the columns. In general, the rate of flow should be adjustable between 0.1 and 5.0 mL/min, and back pressures should not exceed limits specified by the column manufacturer. If the elution volume is not being measured directly or corrected for systematic changes, the precision in the flow rate must be at least  $\pm 0.3\%$  under the conditions and over the time interval required for running a typical analysis.

**6.3 Sample Injector**—The purpose of an injection system is to generate a sharply defined zone of solution containing the resin when introducing the resin into the flow stream. A valve-and-loop assembly or any of a number of commercially available high-performance liquid chromatography automatic injection systems can be used for this purpose. It is required that contribution to band spreading be minimal and that the injector be able to operate at the back pressure generated by the columns.

**6.4 Columns**—Stainless steel columns with uniform and highly polished inside walls should be used. Columns with lengths ranging from 15 to 50 cm, plus special end fittings, frits, and connectors designed to minimize dead volume and back-mixing are recommended. Micro-particulate, semirigid organic gels, and rigid, solid, porous packing materials are used for SEC. Generally, the packing materials have narrow particle size distributions, with particle sizes in the range from 3 to 20  $\mu\text{m}$ . Packing materials are available in a variety of shapes and pore sizes. Columns may be packed with particles of relatively uniform pore size or with a “mixed bed” of particles to produce a broad range of pore sizes for polymer separation. If a set of columns is used, it is recommended that the columns be connected, starting from the injector outlet, from columns having the smallest to those having the largest packing pore size.

**NOTE 2**—Select the number of columns and pore sizes based on the molecular weight range of the resins being analyzed, and on the degree of resolution required.

**6.5 Detectors**—The purpose of the detector is to continuously monitor the concentration of solute eluting from the chromatographic column(s). Consequently, the detector must be sufficiently sensitive and respond linearly to the solute concentration. Additionally, the detector must not appreciably distort the concentration gradient in the emerging stream. This requirement imposes severe limitations on the volume of solution available for detection. For example, use of detectors with cell volumes greater than 15  $\mu\text{L}$  generally will not be acceptable for this practice. A differential refractometer has moderate sensitivity and general utility. The differential refractometer provides a signal proportional to the difference in refractive index (RI) between the solvent and the column eluate. The detector should respond to a change of no more

than  $10^{-7}$  to  $10^{-8}$  RI unit and have a cell volume  $\leq 10\ \mu\text{L}$ . Other types of detectors may be used.

**NOTE 3**—The principal disadvantage of the differential refractometer is that precise control of temperature, pressure, and flow rate is required to maintain a stable signal for an appropriate level of sensitivity. For example, most organic liquids have a temperature coefficient of  $10^{-4}$  RI units per K. Consequently, the temperature within the RI detector cell must be controlled to within  $10^{-4}^\circ\text{C}$ .

**6.6 Tubing and Fittings**—All tubing between the sample injector and the detector should be no greater than 0.25 mm (0.010 in.) in internal diameter and of sufficient thickness for use at pressures up to 42 MPa. Connecting tubing should be kept as short as possible, and all fittings and connectors must be designed to prevent backmixing and to have low dead volumes.

**6.7 Data Handling Systems**—Means must be provided for determining chromatographic peak heights or integrated area segments at prescribed intervals under the chromatogram and for handling and reporting the data. This can best be accomplished by means of a computer or a real-time data acquisition system with either off-line or on-line data processing.

**NOTE 4**—Data acquisition and handling systems for SEC have not been standardized. However, a number of manufacturers provide chromatography data systems that include SEC software. Also, some users have developed their own specialized software.

**6.8 Recorder/Plotter (Optional)**—Either a recording potentiometer or a printing device connected to a data handling system may be used to plot the chromatographic data. Pen response and signal-to-noise ratio should be chosen so that the concentration signal is not appreciably perturbed.

**6.9 Other Components (Optional)**—Special solvent line filters, pressure monitors, pulse dampers, flowmeters, thermostated ovens, syphon counters, plotters, raw data storage systems, software, and so forth, are often incorporated with the essential components previously listed.

**6.10** The interrelationships of the components are shown schematically in Fig. 1. Use of a degasser located in the solvent reservoir or between the reservoir and pumping system is recommended to remove air from the solvent.

**6.11 Analytical Balance**, sensitive to  $\pm 0.0001\ \text{g}$ .

## 7. Reagents and Materials

**7.1 Low-MW Standards**—Low-MW compounds, such as toluene, xylene, or *o*-dichlorobenzene, that are used for determining plate count, or as internal standards, must be of high purity.

**7.2 Polystyrene Standards**—Unimodal, narrow, MW standards that bracket the desired range of the resins being characterized. Selection of a minimum of three standards per decade in molecular weight spanning the effective molecular weight range of the column set is recommended.

**7.3 Solvent-Tetrahydrofuran (THF)**—Stabilized, high purity. Depending on the detector used, ultraviolet (UV) grade THF may be required, however, caution should be used due to the risk of peroxides in unstabilized THF.

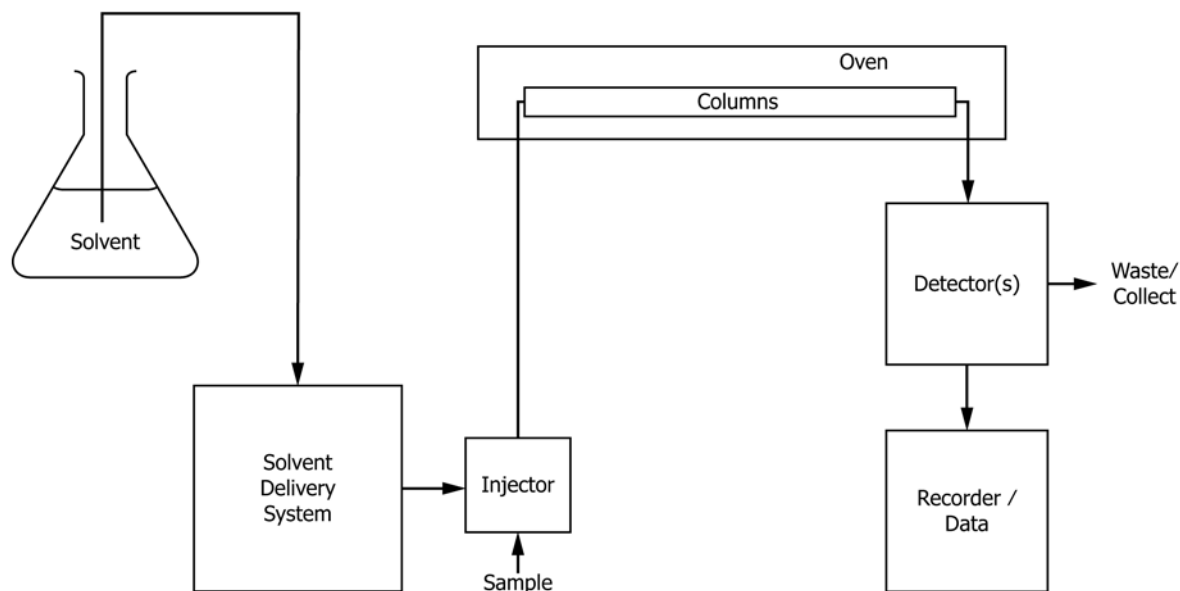


FIG. 1 Schematic of a SEC System

## 8. Preparation of Apparatus

8.1 *Assembly*—The SEC system shall be assembled as shown in Fig. 1 and readied for operation. For commercial SEC systems, follow the manufacturers' guidelines and recommendations for assembly and operation.

8.2 *Temperature*—An operating temperature is not specified in this practice. However, precise control of the temperature of the components (injection loop, column(s), detector, and connecting tubing) is critical for controlling the reproducibility of the SEC molecular weights and will significantly reduce baseline drift. In addition, the temperature of the previously mentioned internal components during an analysis must be within 3°C of their temperature at calibration.

8.3 *Flow Rate*—Follow the column and instrument manufacturers' recommendations when selecting a flow rate and starting the solvent pumping system. A flow rate of  $1 \pm 0.1$  mL/min is suggested, with the pumping system adjusted to deliver a relatively constant and pulseless flow of eluent from the detector outlet. Flow rate may be measured by determining either the volume or weight of solvent eluted over a sufficiently long period of time and under suitable conditions to guarantee a precision of at least  $\pm 0.3\%$ . Alternatively, an internal standard or control may be used to monitor flow rate. Flow rates must be determined during calibration and before or after each analysis.

8.4 *Detector*—Detector settings should provide optimum sensitivity for solute detection without causing undue baseline noise or overloading of the output signal.

8.5 *Data Handling System*—Users are advised to follow the recommendations of their computer or data system manufacturer for setting data acquisition and integration parameters.

## 9. Preparation of Solutions

9.1 *Polystyrene Standards*—The typical concentration range for polystyrene standards is from 0.2 to 1 mg/mL. Prepare

solutions by weighing an aliquot of the standard into a suitable clean, dry, solvent-resistant stoppered flask or screw-capped vial, then add an appropriate amount of solvent from the mobile phase reservoir. Dissolve the standard at room temperature. Do not stir or filter the solutions. Mixtures of two or more narrow MWD polymer standards may generally be prepared in the same flask. The standards selected for each solution should differ in Mw values by a factor of 10 or greater. However, it is recommended that any higher MW polymer standards (MW > 800 000 g/mol) be prepared as single, more dilute solutions to reduce problems relating to polymer size in solution and concentration during calibration.

NOTE 5—Low-molecular weight standards may be resolved into distinct oligomeric components on high-resolution column sets. In such case, see the information supplied by the manufacturer for assigning the approximate molecular weight to each oligomer peak.

9.2 *Reference Standard*—The same procedure as described in 9.1 can be used to prepare dilute solutions (0.1 % w/v) of low-MW materials such as toluene, xylene, or *o*-dichlorobenzene for determining the column plate count or for use as an internal standard.

NOTE 6—Alternatively, the dissolved oxygen peak may be used as the reference standard.

9.3 *Resin Samples*—The typical concentration range for resin solutions is from 0.2 to 1 mg/mL. Solutions are prepared as described in 9.1, dissolving with a minimum of agitation. Magnetic stirring devices or laboratory shakers may be used to aid dissolution, however, excessive shear, temperature or ultrasonic devices may cause the polymer to degrade, and therefore must not be used with this practice. It is a good practice to analyze the resin solutions within 24 h of their preparation.

9.4 *Filtration*—It is recommended that all resin solutions be filtered through membrane filters to remove any materials likely to obstruct the columns and other system components.

Calculation of Column Set Efficiency

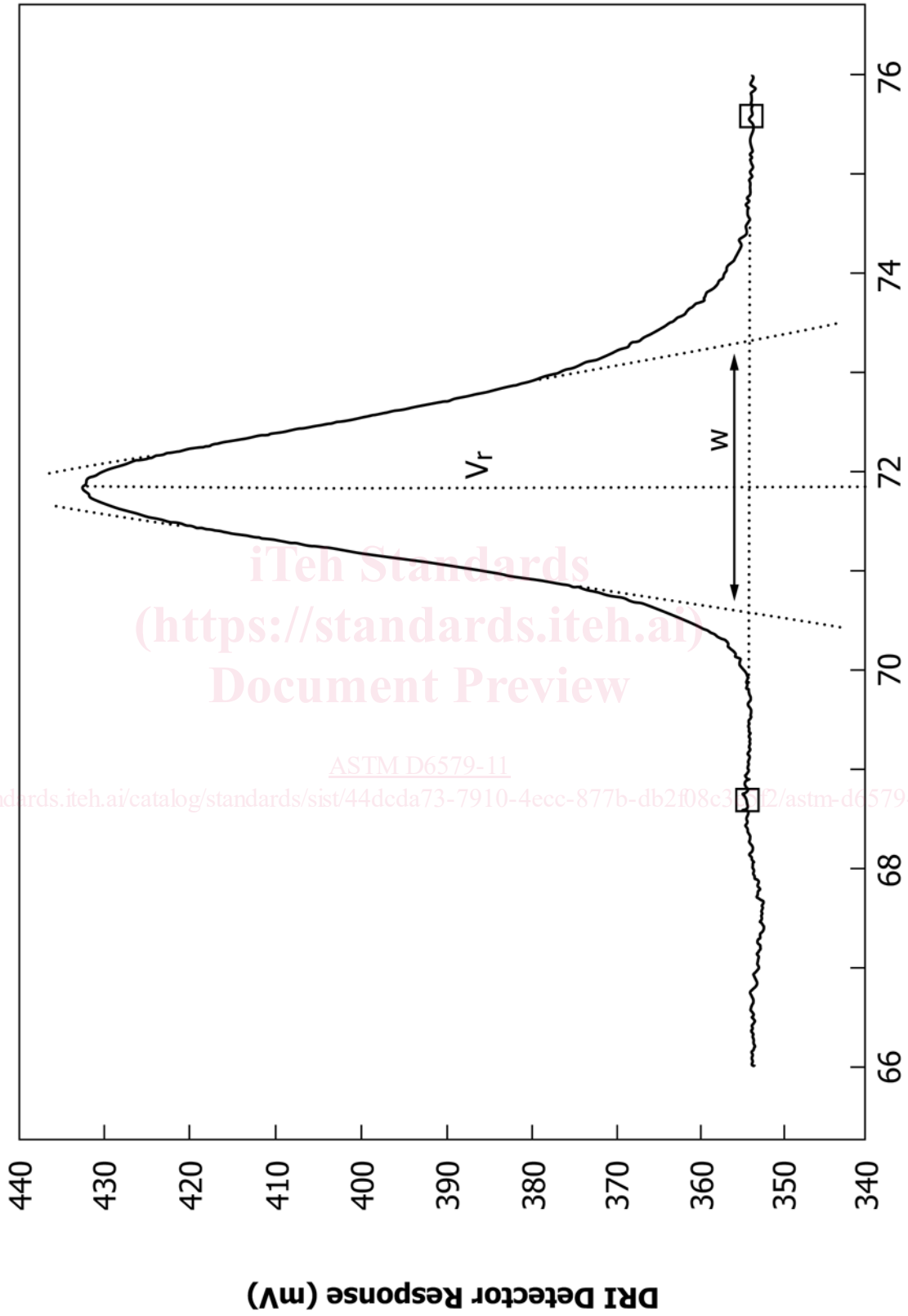


FIG. 2 Measurement of Peak

ASTM D6579-11