



Designation: E1417-05^{ε1} Designation: E1417/E1417M - 11

Standard Practice for Liquid Penetrant Testing¹

This standard is issued under the fixed designation E1417/E1417M; the number immediately following the designation indicates the year of original adoption or, in the case of revision, the year of last revision. A number in parentheses indicates the year of last reapproval. A superscript epsilon (ϵ) indicates an editorial change since the last revision or reapproval.

This standard has been approved for use by agencies of the Department of Defense.

^{ε1}Note—Editorial corrections were made in August 2005.

1. Scope*

1.1 This practice establishes the minimum requirements for conducting liquid penetrant examination of nonporous metal, and nonmetal components.

NOTE 1—This practice replaces MIL-STD-6866

1.2 The penetrant examination processes described in this practice are applicable to in-process, final, and maintenance (in-service) ~~inspections~~ examinations. These processes are applicable for the detection of discontinuities, such as lack of fusion, corrosion, cracks, laps, cold shuts, and porosity, that are open or connected to the surface of the component under examination.

1.3 Caution must be exercised in the usage of elevated temperature with components manufactured from thermoplastic materials. Also, some cleaners, penetrants, and developers can have a deleterious effect on nonmetallic materials such as plastics. Prior to examination, tests should be conducted to ensure that none of the cleaning or ~~inspection~~ examination materials are harmful to the components to be examined.

1.4 Units—The values stated in either SI units or inch-pound units are to be regarded separately as standard. The SI units given values stated in brackets are for information only. Each system may not be exact equivalents; therefore, each system shall be used independently of the other. Combining values from the two systems may result in non-conformance with the standard.

1.5 All areas of this practice may be open to agreement between the cognizant engineering organization and the supplier, or specific direction from the cognizant engineering organization.

1.6 *This standard does not purport to address all of the safety concerns, if any, associated with its use. It is the responsibility of the user of this standard to establish appropriate safety and health practices and determine the applicability of regulatory limitations prior to use.*

2. Referenced Documents

2.1 The following documents form a part of this practice to the extent specified herein: <http://www.astm.org/can83a/astm-e1417-e1417m-11>

2.2 *ASTM Standards*:²

D95 [Test Method for Water in Petroleum Products and Bituminous Materials by Distillation](#)

D2512 [Test Method for Compatibility of Materials with Liquid Oxygen \(Impact Sensitivity Threshold and Pass-Fail Techniques\)](#)

D6304 [Test Method for Determination of Water in Petroleum Products, Lubricating Oils, and Additives by Coulometric Karl Fischer Titration](#)

E165 [Practice for Liquid Penetrant Examination for General Industry](#)

E543 [Specification for Agencies Performing Nondestructive Testing](#)

E1135 [Test Method for Comparing the Brightness of Fluorescent Penetrants](#)

E1316 ~~[Terminology for Nondestructive Examinations](#)~~ [Terminology for Nondestructive Examinations](#)

E2297 [Guide for Use of UV-A and Visible Light Sources and Meters used in the Liquid Penetrant and Magnetic Particle Methods](#)

¹ This practice is under the jurisdiction of ASTM Committee E07 on Nondestructive Testing and is the direct responsibility of Subcommittee E07.03 on Liquid Penetrant and Magnetic Particle Methods.

~~Current edition approved Aug. 8, 2005. Published July 2005. Originally approved in 1991. Last previous edition approved in 1999 as E1417-99. DOI: 10.1520/E1417-05E01.~~

Current edition approved Aug. 15, 2011. Published September 2011. Originally approved in 1991. Last previous edition approved in 2005 as E1417-05^{ε1}. DOI: 10.1520/E1417_E1417M-11.

² For referenced ASTM standards, visit the ASTM website, www.astm.org, or contact ASTM Customer Service at service@astm.org. For *Annual Book of ASTM Standards* volume information, refer to the standard's Document Summary page on the ASTM website.

*A Summary of Changes section appears at the end of this standard.

2.3 ASNT Standards:³

ANSI/ASNT-CP-189 Standard for Qualification and Certification of Nondestructive Testing Personnel
 SNT-TC-1A Recommended Practice for Personnel Qualification and Certification in Nondestructive Testing

2.4 Military Standards:^{4, 5} ~~MIL-I-25135 Inspection Materials, Penetrant~~

~~QPL-25135 Qualified Products of, Inspection Materials, Penetrant~~
~~MIL-STD-410 Nondestructive Testing Personnel Qualification and Certification~~
 MIL-STD-792 Identification Marking Requirements for Special Purpose Components ~~MIL-STD-2175 Castings Classification and Inspection of~~
 QPL-AMS-2644 Qualified Products List, Inspection Material, Penetrant
 MIL-STD-45662 Calibration System Requirements

2.5 ANSI/ISO/AIA Standards:⁶

ANSI/NCSL Z540-1 General Requirement for Calibration Laboratories and Measuring Test Equipment
~~ISO10012-1 Quality Assurance Requirements for Measuring Test Equipment~~ ISO 10012 Measurement Management Systems—
 Requirements for Measuring Measurement Process and Measuring Equipment

NAS 410 Certification and Qualification of Nondestructive Test Personnel

2.6 SAE Standard:⁷

AMS 2644 ~~Inspection Material, Penetrant~~ Inspection Material, Penetrant
 AMS 2175A Castings, Classification and Inspection of

2.7 *DoD Contracts*—Unless otherwise specified, the issues of the documents that are DoD adopted are those listed in the issue of the DoDISS (Department of Defense Index of Specifications and Standards) cited in the solicitation.

2.8 *Order of Precedence*—In the event of conflict between the text of this practice and the references cited herein, the text of this practice takes precedence.

3. Terminology

3.1 Definitions~~Definitions~~:

3.1.1 The terminology relating to liquid penetrant examination that appears in Terminology E1316 shall apply to the terms used in this practice.

3.2 Definitions of Terms Specific to This Standard:

3.2.1 *aerospace*—any component that will be installed on a system that flies.

3.2.2 *cognizant engineering organization*—the company, agency, or other authority responsible for the design or after delivery, end use of the system or component for which liquid penetrant examination is required; in addition to design personnel, this may include personnel from material, and process engineering, stress analysis, NDT or quality groups and others, as appropriate.
~~cognizant engineering organization (CEO)—Reference Terminology Standard E1316.~~

3.2.3 *component*—the part(s) or element(s) of a system described, assembled, or processed to the extent specified by the drawing.

3.2.4 *final examination*—the final examination performed for the acceptance of the item. Any change to the item's surface such as machining, grinding, welding, heat treatment, or etching by subsequent manufacturing operation, may render the previous examination invalid, requiring reexamination of all affected surfaces, unless otherwise approved in the contract.

3.2.5 *in-process*—that which occurs during manufacturing before a component is in final form.

3.2.6 *in-service*—refers to components that are in use or storage for their intended function.

3.2.7 *linear indication*—penetrant indications with at least a three to one length to width ratio.

3.2.8 *reprocess*—repeat, after cleaning, the application and appropriate processing of penetrant, emulsifier (as required), and developer (as required).

3.2.9 *rounded indication*—penetrant indication whose length to width ratio is less than three-to-one.

3.2.10 *supplier*—the organization contracted to supply the material, parts, or assembly.

3.2.11 *turbine engine critical components*—any component on turbine engine designated by the manufacturer as “critical.”

4. Significance and Use

4.1 This practice establishes the basic parameters for controlling the application of the liquid penetrant method. This practice

³ Available from The American Society for Nondestructive Testing (ASNT), P.O. Box 28518, 1711 Arlingate Lane, Ln., Columbus, OH 43228-0518, <http://www.asnt.org>.

⁴ Copies of specifications, standards, drawings, and publications required by manufacturers in connection with specific acquisition functions should be obtained from the contracting activity or as directed by the contracting officer.

⁵ Available from Standardization Documents Order Desk, DODSSP, Bldg. 4, Section D, 700 Robbins Ave., Philadelphia, PA 19111-5094, Attn: NPODS; 19111-5098, <http://dodssp.daps.dla.mil>.

⁶ Available from American National Standards Institute (ANSI), 25 W. 43rd St., 4th Floor, New York, NY 10036, <http://www.ansi.org>.

⁷ Available from Society of Automotive Engineers (SAE), 400 Commonwealth Dr., Warrendale, PA 15096-0001.

⁷ Available from SAE International (SAE), 400 Commonwealth Dr., Warrendale, PA 15096-0001, <http://www.sae.org>.

is written so it can be specified on the engineering drawing, specification, or contract. It is not a detailed how-to procedure to be used by the inspector and, therefore, must be supplemented by a detailed procedure that conforms to the requirements of this practice. Test Method Specification E165 contains information to help develop detailed how-to requirements.

5. Classification

5.1 Penetrant examination processes and materials are classified in accordance with the material classification contained in ~~MIL-I-25135~~ or AMS 2644. Penetrant systems covered by this practice shall be of the following types, methods, and sensitivity levels:

5.1.1 Type:

5.1.1.1 *Type I*—Fluorescent dye.

5.1.1.2 *Type II*—Visible dye.

5.1.2 Method:

5.1.2.1 *Method A*—Water washable.

5.1.2.2 *Method B*—Post-emulsifiable, lipophilic.

5.1.2.3 *Method C*—Solvent-removable.

5.1.2.4 *Method D*—Post-emulsifiable, hydrophilic.

5.1.3 *Sensitivity*—(These levels apply to Type I penetrant systems only. Type II penetrant systems have only a single sensitivity and it is not represented by any of the levels listed as follows):

5.1.3.1 *Sensitivity Level ½*—Very low.

5.1.3.2 *Sensitivity Level 1*—Low.

5.1.3.3 *Sensitivity Level 2*—Medium.

5.1.3.4 *Sensitivity Level 3*—High.

5.1.3.5 *Sensitivity Level 4*—Ultrahigh.

5.2 Developers shall be of the following forms:

5.2.1 *Form a*—Dry powder.

5.2.2 *Form b*—Water-soluble.

5.2.3 *Form c*—Water-suspendable.

5.2.4 *Form d*—Nonaqueous for Type I fluorescent penetrant.

5.2.5 *Form e*—Nonaqueous for Type II visible dye.

5.2.6 *Form f*—Specific application.

5.3 Solvent removers shall be of the following classes:

5.3.1 *Class 1*—Halogenated.

5.3.2 *Class 2*—Nonhalogenated.

5.3.3 *Class 3*—Specific application.

6. General Practices

6.1 *Responsibility for Examination*—Unless otherwise specified in the contract or purchase order, the cognizant engineering organization is responsible for the performance of all examination requirements as specified herein. The cognizant engineering organization ~~shall~~ may specify more stringent requirements than the minimum specified in this practice when necessary to ensure that a component meets its functional and reliability requirements. Except as otherwise specified, the supplier may utilize his own facilities or any other facilities suitable for the performance of the examination requirements specified herein. The purchaser reserves the right to perform any of the examinations set forth in this practice where such examinations are deemed necessary to ensure that supplies and services conform to prescribed requirements.

6.2 *Specifying*—When examination is required in accordance with this practice the orders, contracts, or other appropriate documents shall specify the criteria by which the acceptability of components is to be evaluated. Engineering drawings or other applicable documents shall indicate the acceptance criteria for the entire component; zoning may be used. Examination on a sampling basis shall not be allowed unless specifically permitted by the contract.

6.3 *Personnel Qualification*—Personnel performing examinations to this practice shall be qualified and certified in accordance with ASNT Personnel Qualification SNT-TC-1A, ANSI/ASNT-CP-189, ~~NAS 410~~, or ~~MIL-STD-410~~ or NAS 410 for military purposes, or as specified in the contract or purchase order.

6.4 *Agency Qualification*—The agency performing this practice may be evaluated in accordance with Practice Specification E543.

6.5 Materials:

6.5.1 *Qualified Materials*—Only materials listed or approved for listing on ~~QPL-25135~~ or ~~QPL-AMS-2644~~ (reference ~~MIL-I-25135~~ or AMS 2644) shall be utilized for penetrant examination. Materials not conforming to the requirements of ~~MIL-I-25135~~ or AMS 2644 may be used only when a waiver is obtained from the cognizant engineering organization.

6.5.2 *Liquid Oxygen (LOX) Compatible Materials*—Penetrant materials tested in accordance with Test Method D2512 and passing at 70 ft-lbf [95 J] or higher, shall be used on LOX wetted surfaces that cannot be thoroughly post-cleaned. Use of these materials shall be in accordance with the material supplier instructions and shall require approval of the cognizant engineering

organization when such materials do not meet the requirements of ~~MIL-I-25135 or AMS 2644.~~

6.6 *Equipment and Facilities*—Processing equipment used in the penetrant examination process shall be constructed and arranged to permit a uniform and controlled operation. The equipment shall meet all applicable national and local safety requirements as well as the requirements specified herein.

6.6.1 *Viewing Areas*—Areas where parts are reviewed shall be kept clean at all times. For visible dye examination, Type II, the lighting system shall provide at least 100 fc (1076 lx) of visible light when measured at the examination surface. For stationary fluorescent dye examination, Type I, the ambient visible light background shall not exceed 2 fc (21.5 lx) at the examination surface. The black lights shall provide a minimum of 1000 $\mu\text{W}/\text{cm}^2$ at the examination surface. Black lights shall meet the requirements of 7.8.4.1. Viewing areas for portable fluorescent dye examination shall utilize dark canvas, photographer's black cloth, or other methods to reduce the visible light background to the lowest possible level during examination and black light intensity shall meet the above requirements.

6.6.1.1 Where lamps are physically too large to directly illuminate the examination surface, special lighting, such as UV pencil lights, or UV light guides, or remote visual ~~inspection~~examination equipment shall be used. When using a borescope, the image viewed must have sufficient resolution to effectively evaluate the indication. Light intensity shall be measured at the expected working distance and shall ~~meet the requirements of 6.6.1 as appropriate.~~ be a minimum 1000 $\mu\text{W}/\text{cm}^2$.

6.6.2 *Drying Oven*—When components are oven dried, the dryer must be a forced-air recirculating type. In automated systems, where parts are dried by radiant heat and forced air, the travel speed of the system shall be such as to preclude overdrying of parts. The forced air does not have to be recirculating but must preclude contamination of the parts. The temperature shall be controlled with a calibrated device capable of maintaining the oven temperature at $\pm 15^\circ\text{F}$ (-9.44°C) of the temperature for which it is set. The oven shall not exceed 160°F [~~71°C~~ (71°C)]. The temperature indicator shall be accurate to $\pm 10^\circ\text{F}$ (-12.22°C) of the actual oven temperature.

6.7 *Written Procedures*—~~All liquid penetrant examination procedures are similar for many components, a master written procedure may be utilized that covers the details common to a variety of components. As a minimum, the following information is required either in individual procedures, or a master procedure, or a combination thereof:—~~All liquid penetrant examination procedures are similar for many components, a master written procedure may be utilized that covers the details common to a variety of components. All written procedures, including technique sheets for specific parts shall be approved by an individual who is a qualified and certified Level III for penetrant examination in accordance with the requirements of 6.3. As a minimum, the following information is required either in individual procedures, specific technique sheets, or a master procedure, or a combination thereof:

6.7.1 Details of the precleaning and etching process, including the materials used and specification or other document controlling the examination process, the drying parameters and the processing times. If these operations are performed by other than examination personnel, details concerning the operations may be specified in other documents but must be referenced in the procedure(s). Reference Test Method E165 for detailed cleaning methods and instructions.

6.7.2 Classification of the penetrant examination materials required in accordance with Section 5 ~~and MIL-I-25135 or AMS 2644 and AMS 2644.~~

6.7.3 Complete processing parameters for the penetrant examination materials including concentrations, application methods, dwell times, drying times, temperatures, and controls to prevent excessive drying of penetrant or overheating of component, as appropriate. Reference ~~Test Method~~Practice E165 for additional details.

6.7.4 Complete examination/evaluation requirements including light intensities (both examination and ambient), the accept/reject criteria and the method and location of marking. Reference ~~Test Method~~Practice E165 for additional details.

6.7.4.1 When the examination is performed in accordance with this Standard Practice, engineering drawings, specifications, technique sheets, or other applicable documents shall indicate the accept/reject criteria by which the components are judged acceptable.

6.7.5 Identification of the components or areas within a component to be examined in accordance with the procedure.

6.7.6 Complete postcleaning procedures. If postcleaning is performed by other than examination personnel, details concerning this operation may be specified in other documents, but must be referenced in the procedure. Reference Test Method E165 for additional details.

6.8 *Examination Sequence*—Final penetrant examination shall be performed after completion of all operations that could cause surface-connected discontinuities or operations that could expose discontinuities not previously open to the surface. Such operations include, but are not limited to, grinding, welding, straightening, machining, and heat treating.

6.8.1 *Surface Treatment*—Final penetrant examination may be performed prior to treatments that can smear the surface but not by themselves cause surface discontinuities. Such treatments include, but are not limited to, vapor blasting, deburring, sanding, buffing, sandblasting, lapping, or peening. Performance of final penetrant examination after such surface treatments requires that etching be included in the precleaning operation unless otherwise agreed on between the cognizant engineering organization and the NDT facility.

~~NOTE 1—Final 2—Final~~ penetrant examination should always precede peening.

6.8.2 *Surface Coatings*—All coatings and other surface conditions, such as, paint, plating, corrosion, etc. shall be removed from the area to be examined prior to penetrant examination. The penetrant examination shall precede any surface finish, such as

anodize, except for in-service parts that may be examined without removing the anodize.

6.9 *Material and Process Limitations*—Not all penetrant sensitivity levels, materials, and process methods are applicable to all examination requirements. The sensitivity level shall be adequate for the intended purpose of the examination. Unless there is an approval for deviation given by the cognizant engineering organization, the following selections are mandatory or forbidden, as indicated:

6.9.1 Forms *a* and *b* (dry powder and water soluble) developers shall not be used with Type II (visible dye) penetrant systems. This is not intended to prohibit the use of a Form *f* developer that has been qualified with a particular Type II system in accordance with MIL-I-25135 or AMS 2644.

6.9.2 Type II penetrant examination shall not be used for final acceptance examination of aerospace products. In addition, Type II penetrant examination shall not be used prior to a Type I penetrant examination of the same surface. This is not intended to eliminate the use of in-process Type II inspection/examinations where subsequent fabrication/forming operations remove the surfaces inspected.

6.9.3 The maintenance or overhaul examination of turbine engine critical components shall be done only with Type I, Methods C or D (solvent removable or post emulsified, hydrophilic) processes and either sensitivity Levels 3 or 4 penetrant materials.

6.10 *Records*—Results of all final penetrant examinations shall be recorded. All recorded results shall be identified, filed, and made available to the cognizant engineering organization upon request. Records shall provide for traceability to the specific part or lot inspected. As a minimum, the records shall include: identification of the procedure used, disposition of the examination; identification of the inspector's inspection/examination stamp, electronic ID or signature; and the date of examination. Records shall be kept for a minimum of three years or as otherwise specified in the purchase order or contract.

7. Specific Practices (Fig. 1)

7.1 *Surface Preparation*—All surfaces to be examined shall be clean, dry, and free of soils, oil, grease, paint and other coatings (except as allowed by 6.8.2), corrosion products, scale, smeared metal, welding flux, chemical residues, or any other material that could prevent the penetrant from entering discontinuities, suppress dye performance, or produce unacceptable background. Cleaning methods, including etching, selected for a particular component shall be consistent with the contaminants to be removed and shall not be detrimental to the component or its intended function.

7.1.1 One or more appropriate cleaning methods such as solvent cleaning, vapor degreasing, ultrasonic cleaning, aqueous-based cleaning, or methods agreed upon with the cognizant engineering organization shall be used for the removal of oils, greases, and waxes, and as the final step before penetrant examination. If etching is required, the parts shall be appropriately cleaned, then etched and delivered to penetrant examination.

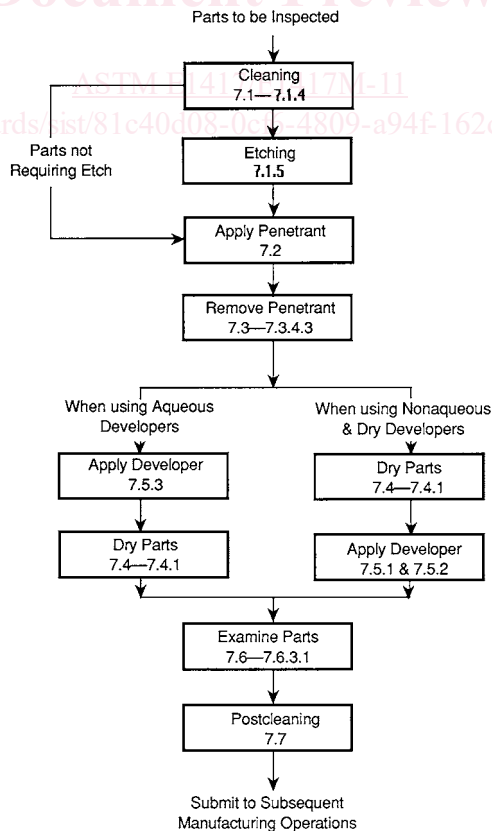


FIG. 1 Process Flow Chart

7.1.2 Chemical cleaning shall be used for the removal of paints, varnishes, scale, carbon, or other contaminants that are not removable by solvent cleaning methods. (**Warning**—Caution should be exercised when using chemicals because they may irritate the eyes or skin.)

7.1.3 Mechanical cleaning shall be used for the removal of soils and other contaminants that cannot be removed by solvent or chemical cleaning methods.

7.1.4 Grit blasting without etching may be an acceptable cleaning method if it can be demonstrated that a sufficiently fine abrasive (150 grit or finer) will not cause peening and can be removed by a detergent or alkaline cleaner.

7.1.5 Etching, unless otherwise specified, shall be performed when evidence exists that previous cleaning, surface treatments, or service usage has produced a surface condition that degrades the effectiveness of penetrant examination. Etching processes shall be developed and controlled to prevent damage to the component under test. Etching is not required for those features such as close tolerance holes, close tolerance surfaces, ~~fraying~~ faying surfaces, etc., where the function of the component or assembly would be degraded. Etching is not required for intermediate examination when the surface(s) are not retained in the final part/component configuration or when the final penetrant examination is preceded by etching.

7.2 *Penetrant Application*—Unless otherwise specified, the entire surface of the component shall be covered with penetrant. Large components may be examined in sections. Penetrant shall be applied by spraying, dipping, brushing, or other method to provide coverage as required. The component, penetrant, and ambient temperatures shall all be in the range from 40 to 125°F [4 to 52°C] unless otherwise specified.

7.2.1 *Penetrant Dwell Time*—~~The dwell time, unless otherwise specified, shall be a minimum of 10 min. For temperatures between 40 and 50°F [4.4 and 10°C], dwell time shall be a minimum of 20 min. Rotate or otherwise move components, if required, during dwell to prevent pooling of the penetrant. For dwell times greater than two hours, the penetrant shall be reapplied as required to prevent drying. The component shall be immersed in penetrant, if that is the application method, for no longer than half the total dwell time.~~ The dwell time, unless otherwise specified, shall be a minimum of 10 min. For temperatures between 40 and 50°F [4.4 and 10°C], dwell time shall be a minimum of 20 min. It is recommended to rotate or otherwise move components as necessary, during dwell to prevent pooling of the penetrant. For dwell times greater than two hours, the penetrant shall be reapplied as required.

7.3 *Penetrant Removal:*

7.3.1 *Method A Process*—Water-washable penetrants shall be removed with a manual or automated water spray, or a manual wipe, or an air agitated immersion wash.

7.3.1.1 *Manual Spray*—~~Water~~ For handheld spray guns water pressure adequate to remove the penetrant shall be used but shall not exceed 40 psi [275 kPa]. Water temperature shall be between 50 to 100°F [10 to 38°C]. When hydro-air nozzles are used the air pressure shall not exceed 25 psi [172 kPa]. A coarse spray shall be used with a minimum distance of 12 in. [30 cm], when possible between the spray nozzle and the part. Washing shall be conducted under appropriate illumination. Caution shall be exercised to ensure that over-washing does not occur. If over-washing occurs, the component(s) shall be thoroughly dried and reprocessed. After rinsing, drain water from the component and utilize repositioning, suction, blotting with clean absorbent materials, or filtered shop air at less than 25 psi [172 kPa] to prevent pooling in cavities, recesses, and pockets. (**Warning**—Over-removal of the surface penetrant shall require that the component be cleaned and reprocessed. A good indicator of over-wash or over-removal of the surface penetrant is evidenced by the total lack of residue that may occur on all or a specific area of the part, see Test Method E165.)

7.3.1.2 *Automated Spray*—For automated spray systems, the wash parameters shall be such that the requirements of ~~this practice~~ 7.8.3 are met. Water temperature shall be maintained between 50 to 100°F [10 to 38°C].

7.3.1.3 *Manual Wipe*—Excess penetrant shall be removed with a clean, dry, lint-free cloth or absorbent toweling. The remainder of the surface penetrant shall then be removed with a water-dampened cloth or towel. The surface shall not be flushed with water and the cloth or towel shall not be saturated with water. The component shall be examined under appropriate illumination to ensure adequate removal of the surface penetrant. The surface shall be dried by blotting with a clean, dry towel or cloth, or by evaporation.

7.3.1.4 *Immersion*—Immersion wash may be utilized if the water is air agitated and good circulation is maintained throughout the wash operation. Water temperature shall be maintained between 50 and 100°F [10 and 38°C].

7.3.2 *Method B Process*—Lipophilic post-emulsifiable penetrant shall be removed by air agitated water immersion or with a water spray or hydro-air spray rinse after application of an emulsifier and an appropriate emulsifier dwell time. Water pressure and temperature and air pressure shall meet the requirements specified ~~for Method A.~~ in 7.3.1.1, 7.3.1.2, and 7.3.1.4.

7.3.2.1 Lipophilic emulsifiers shall be applied by immersion or flowing. Lipophilic emulsifiers shall not be applied by spray or brush and shall not be agitated while on the surface of the component. Maximum dwell times, unless otherwise specified, shall be 3 min for Type I systems and 30 s for Type II systems, or as recommended by the manufacturer. Actual dwell times shall be the minimum necessary to produce an acceptable background on the component.

7.3.2.2 *Rinsing*—After the appropriate emulsifier dwell time, emulsification shall be stopped by immersion or water spray. For spray removal of the penetrant/emulsifier mixture, the parameters of 7.3.1.1, 7.3.1.2, and 7.3.1.4 apply. Dwell time in an agitated immersion rinse, if used, shall be the minimum required to remove the emulsified penetrant. Examine the components under appropriate illumination after rinsing. Clean and reprocess those components with excessive background. After rinsing, drain water from the component and utilize repositioning, suction, blotting with clean absorbent materials or filtered shop air at less than 25