



Designation: ~~E2385-04~~ Designation: E2385 - 11

Standard Guide for Estimating Wildlife Exposure Using Measures of Habitat Quality¹

This standard is issued under the fixed designation E2385; the number immediately following the designation indicates the year of original adoption or, in the case of revision, the year of last revision. A number in parentheses indicates the year of last reapproval. A superscript epsilon (ϵ) indicates an editorial change since the last revision or reapproval.

1. Scope

1.1 Ecological Risk Assessments (EcoRAs) typically focus on valued wildlife populations. Regulatory authority for conducting EcoRAs derives from various federal laws [for example, Comprehensive Environmental Response, Compensation and Liability Act 1981, (CERCLA), Resource Conservation Recovery Act (RCRA), and Federal Insecticide, Fungicide, and Rodenticide Act, (FIFRA)]. Certain procedures for conducting EcoRAs (**1-4**)² have been standardized [E1689-95(2003) Standard Guide for Developing Conceptual Site Models for Contaminated Sites; E1848-96(2003) Standard Guide for Selecting and Using Ecological Endpoints for Contaminated Sites; E2020-99a Standard Guide for Data and Information Options for Conducting an Ecological Risk Assessment at Contaminated Sites; E2205-02 Standard Guide for Risk-Based Corrective Action for Protection of Ecological resources; E1739-95(2002) Standard Guide for Risk-Based Corrective Action Applied at Petroleum Release Sites]. Specialized cases for reporting data have also been standardized [E1849-96(2002) Standard Guide for Fish and Wildlife Incident Monitoring and Reporting] as have sampling procedures to characterize vegetation [E1923-97(2003) Standard Guide for Sampling Terrestrial and Wetlands Vegetation].

1.2 Most states have enacted laws modeled after the federal acts and follow similar procedures. Typically, estimates of likely exposure levels to constituents of potential concern (CoPC) are compared to toxicity benchmark values or concentration-response profiles to establish the magnitude of risk posed by the CoPC and to inform risk managers considering potential mitigation/remediation options. The likelihood of exposure is influenced greatly by the foraging behavior and residence time of the animals of interest in the areas containing significant concentrations of the CoPC. Foraging behavior and residence time of the animals are related to landscape features (vegetation and physiognomy) that comprise suitable habitat for the species. This guide presents a framework for incorporating habitat quality into the calculation of exposure levels for use in EcoRAs.

1.3 This guide is intended only as a framework for using measures of habitat quality in species specific habitat suitability models to assist with the calculation of exposure levels in EcoRA. Information from published Habitat Suitability Index (HSI) models (**5**) is used in this guide. The user should become familiar with the strengths and limitations of any particular HSI model used in order to characterize uncertainty in the exposure assessment (**5-7**). For species that do not have published habitat suitability models, the user may elect to develop broad categorical descriptions of habitat quality for use in estimating exposure.

2. Referenced Documents

2.1 ASTM Standards:³

E1689 [Guide for Developing Conceptual Site Models for Contaminated Sites](#)

E1739 [Guide for Risk-Based Corrective Action Applied at Petroleum Release Sites](#)

E1848 [Guide for Selecting and Using Ecological Endpoints for Contaminated Sites](#)

E1849 [Guide for Fish and Wildlife Incident Monitoring and Reporting](#)

E1923 [Guide for Sampling Terrestrial and Wetlands Vegetation](#)

E2020 [Guide for Data and Information Options for Conducting an Ecological Risk Assessment at Contaminated Sites](#)

E2205 [Guide for Risk-Based Corrective Action for Protection of Ecological Resources](#)

3. Terminology

3.1 The words “must,” “should,” “may,” “can,” and “might” have specific meanings in this guide. “Must” is used to express

¹ This guide is under the jurisdiction of ASTM Committee E47 on Biological Effects and Environmental Fate and is the direct responsibility of Subcommittee E47.02 on Terrestrial Assessment and Toxicology.

Current edition approved Dec. 1, 2004. Published January 2005. DOI: 10.1520/E2385-04.

Current edition approved Oct. 1, 2011. Published October 2011. Originally approved in 2004. Last previous edition approved in 2004 as E2385-04. DOI: 10.1520/E2385-11.

² The boldface numbers in parentheses refer to the list of references at the end of this standard.

³ For referenced ASTM standards, visit the ASTM website, www.astm.org, or contact ASTM Customer Service at service@astm.org. For *Annual Book of ASTM Standards* volume information, refer to the standard's Document Summary page on the ASTM website.

an absolute requirement, that is, to state that the test ought to be designed to satisfy the specified condition, unless the purpose of the test requires a different design. “Should” is used to state that the specified condition is recommended and ought to be met if possible. Although violation of one “should” is rarely a serious matter, violation of several will often render the results questionable. “May” is used to mean “is (are) allowed to,” “can” is used to mean “is (are) able to,” and “might” is used to mean “could be possible.” Thus, the distinction between “may” and “can” is preserved, and “might” is never used as a synonym for either “may” or “can.”

3.2 Consistent use of terminology is essential for any vegetation sampling effort. Below is a list of terms that are used in this guide, as well as others that may be encountered commonly in the wildlife habitat quality literature. This list is not exhaustive.

3.2.1 *abundance*—the number of individuals of one taxon in an area; equivalent to the term density as used in botanical literature.

3.2.2 *basal area (BA)*—the cross-sectional area of a tree trunk at 1.4 m (4.5 ft) above ground. (See *diameter at breast height*.)

3.2.3 *biomass*—the mass of vegetation per unit area.

3.2.4 *canopy*—the uppermost layer, consisting of branches and leaves of trees and shrubs, in a forest or woodland.

3.2.5 *carrying capacity*—the theoretical density of organisms that can be supported in a specified ecological system.

3.2.6 *cover*—the area of ground covered by plants of one or more taxa.

3.2.7 *density*—the number of organisms in a specified area.

3.2.8 *diameter at breast height (DBH)*—the widest point of a tree trunk measured 1.4 m (4.5 ft) above the ground.

3.2.9 *forb*—a non-graminoid (that is, broadleaf) herbaceous plant.

3.2.10 *foraging-range*—the area typically explored by an animal while it is feeding. (See *home-range*.)

3.2.11 *geographic information system (GIS)*—an integrated spatial data base and mapping system in which geographical information can be used to produce digital maps, manipulate spatial data, and model spatial information. It allows the overlay of layers of information, such as habitats or plant ranges.

3.2.12 *global positioning system (GPS)*—a survey system in which a GPS unit is used to receive signals from satellites. Signals are then interpreted to provide information such as latitude and longitude or bearings for navigation, positioning, or mapping.

3.2.13 *graminoid*—a grass (Poaceae), sedge (Cyperaceae), or rush (Juncaceae).

3.2.14 *habitat*—the collection of biological, chemical, and physical features of a landscape that provide conditions for an organism to live and reproduce.

3.2.15 *habitat suitability index*—a calculated value that characterizes a specified landscape unit (for example, a polygon) in terms of the features and conditions that are favorable for a particular species. Values range between 0.0 (unsuitable) and 1.0 (ideal).

3.2.16 *herb*—a plant with one or more stems that die back to the ground each year; (that is, graminoids and forbs).

3.2.17 *home-range*—the area around an animal’s established home, which is traversed in normal activities. (See *foraging-range*.)

3.2.18 *physiognomy*—the surface features of an area. [ASTM E2385-11](#)

3.2.19 *population*—a group of individuals of the same species occupying a habitat small enough to permit interbreeding.

3.2.20 *remote sensing*—the use of satellites or high-altitude photography to measure geographic patterns such as vegetation.

3.2.21 *shrub*—woody plant typically smaller than a tree when both are mature (typically with DBH < 10 cm), often with multiple main stems from the base. Should be defined specifically at start of project.

3.2.22 *tree*—woody plant with a single main stem from the base, typically > 2 to 3 m tall when mature (typically DBH > 10 cm). The operational definition should be stated explicitly for each project.

4. Habitat Approaches

4.1 Naturalists and wildlife managers have understood, at least in qualitative terms, the importance of critical habitat for various life history stages (for example, nesting sites, winter range, etc.). Animals are drawn to suitable physical structure and food availability, while avoiding areas of lower quality. The term habitat, though often used loosely as an indication of environmental quality, refers to the combination of physical and biological features preferred by a particular species. Habitat that is great for prairie chicken is unacceptable for barred owls. Different habitat preferences reflect evolution and adaptation of species separating from each other in “*n*-dimensional niche space” (8). There are differential area use rates by different species. Animals are drawn to particular features of the landscape for foraging, loafing, nesting/birthing, etc. Some species are attracted to disturbance zones and edges, but others avoid such areas.

4.2 Habitat Suitability Index (HSI) Models have been developed for many species of interest. Characterization of habitat for certain species was formalized by the U.S. Fish and Wildlife Service in the 1990s (9). Currently, more than 160 HSI models have been published, though usage is limited for quantitative predictions of population densities (6). Rand and Newman (10) describe the applicability of HSI models for EcoRA in general terms, but provide no examples of its use and do not give specific details to integrate habitat information with exposure assessment or risk characterization. Freshman and Menzie (11) describe two approaches to take into account spatial differences in contaminant concentrations with respect to foraging activities and the proportion of a local population likely to be exposed to the contaminants. Their approach does not incorporate HSI models formally, but does demonstrate the fundamental concepts for such use. Hope (12-14), Wickwire et al. (15), Linkov et al. (16, 17) and Linkov and Grebenkov (18) have used placeholder habitat values to illustrate the effect of habitat on cumulative exposure

levels. Kapustka et al. (5, 19) and Linkov et al. (20) have described procedures to use HSIs as the habitat quality parameter for use in estimating exposure levels. The U.S. EPA Office of Solid Waste conducted an exploratory program in which they characterized vegetation types and physical features within a 2-km radius of more than 200 chemically contaminated sites. The focus was on using habitat characteristics to modify estimates of risk. Landscape relationships are being considered in efforts were used to incorporate ecological dynamics into risk assessments by another group within the U.S. EPA. The Program to Assist in Tracking Critical Habitat (PATCH) model uses a GIS platform that allows user input in defining polygons and their characteristics (21); www.epa.gov/wed/pages/models.htm. The Army Risk Assessment Modeling System (ARAMS) (www.wes.army.mil/el/arams/arams.html) is developing modules that use habitat quality assessments to improve the realism of exposure assessments; www.epa.gov/wed/pages/models.htm. This program has been incorporated into HexSim (22). The Army Risk Assessment Modeling System (ARAMS) (www.wes.army.mil/el/arams/arams.html) developed modules that use habitat quality assessments to improve the realism of exposure assessments. Loos et al. (23) developed a receptor-oriented cumulative exposure model (Eco-SpaCE) for wildlife species that includes relevant ecological processes such as spatial habitat variation, food web relations, predation, and life history characteristics. Johnson et al. (24) found that a spatially explicit exposure model based on the general procedures outlined in this Standard provided good agreement with field observations and therefore produced more accurate risk estimates than conventional deterministic approaches. Loos et al. (25) provided a comparative review of approaches used to model exposures experienced by humans and wildlife. Wickwire et al. (26) discussed the rationale for using spatially explicit exposure models and also describe some of the impediments that may be deterring a broader use of such approaches.

5. Identifying Scenarios where Habitat Value can be Important in EcoRAs

5.1 Heterogeneous landscapes coupled with heterogeneous distribution of contaminants introduce great uncertainty in exposure estimates for any species (Fig. 1). In such situations, the relative size of the site to the home range of the species does not matter. Two other cases occur in which habitat modifications of exposure estimates would reduce uncertainty; one in which contaminant distribution is heterogeneous and home range is small relative to the area of the site, the other in which habitat is heterogeneous and the home range is very large relative to the contaminated area. The combination of homogeneous habitat and homogeneous contaminant distribution precludes using habitat conditions as a modifier of exposure regardless of the home range to site area relationship. Homogeneous contaminant distribution also makes habitat conditions moot for species with home ranges equal to or less than the site. Finally, with homogeneous habitat conditions, exposure estimates for species having home ranges equal to or larger than the contaminated area would not be improved.

6. Significance and Use

6.1 Explicit consideration of landscape features to characterize the quality of habitat for assessment species can enhance the ecological relevance of an EcoRA. This can help avoid assessing exposure in areas in which a wildlife species would be absent because of a lack of habitat or to bound exposure estimates in areas with low habitat quality. The measure of habitat quality is used

Spatial relationship habitat agent	homogeneous homogeneous	homogeneous heterogeneous	heterogeneous heterogeneous	heterogeneous homogeneous
	O	O	+	O
	O	+	+	O
	O	O	+	+

Cases where habitat characterization may be useful in reducing uncertainty of exposure estimates (+) and cases where habitat considerations may be moot (O). Adapted from Kapustka et al., 2001, (5).

FIG. 1 Contingency Table Illustrating Relationships of Home Range (Circle) Relative to Site Size (Square).

in place of the commonly used Area Use Factor (AUF). Greater ecological realism and more informed management decisions can be realized through better use of landscape features to characterize sites.

7. Interference

7.1 Observed population density in field tests often is lower than expected based on HSI values (6). Such information can be interpreted as a deficiency. However, it can also be that expectations of precision are too great and beyond the capability of the model (7). HSI model predictions should be viewed as an indication of potential carrying capacity generalized over time, rather than a static predictor of population density, and then the models can be useful. An environmental factor governs the maximum response attainable by an organism; at any interval along a parameter gradient, other variables may curtail attainment of the potential. In statistical descriptions, the relationship can be characterized as having increasing variance as the quality of habitat increases. If applied to wildlife populations, limiting factors such as food supply, predation, or human disturbance may override the apparent quality of habitat for the species of interest. Thus in low habitat quality areas, the observed populations are near zero; but in higher quality habitat areas, observed populations may range from near zero to some predicted maximum.

7.2 Metabolic energy requirements may result in animals in poor-quality habitats to forage longer and consume more food to obtain basal metabolic needs (13). Caution should be exercised when interpreting results, especially for individuals confined entirely within contaminated areas.

7.3 If site data are evaluated as part of a calibration step, caution should be exercised when interpreting results as individuals may move some distance away from the area in which they received a particular exposure (13).

8. Sampling Design

8.1 Typically, site-specific information is required to quantify variables used in calculating indices of habitat quality. The Principal Investigator has the responsibility to design a sampling plan that will yield sufficient information, governed by project specific data quality objectives [ASTM E1923-97(2003) Standard Guide for Sampling Terrestrial and Wetlands Vegetation; (2227, 2328)]. Information needs are dictated by the selection of assessment species and the respective habitat quality models.

8.2 Precision is, in essence, the repeatability of a measurement. Precision is seldom possible without repeating a study exactly, which is rarely feasible or possible for field studies. Bias occurs when samples are not representative of the landscape being sampled. Bias can occur when a sampling scheme is purposely, or inadvertently, designed to measure only certain parts of a landscape (when a complete representation is desired), or when sampling units are chosen to yield certain results. Sampling is most susceptible to bias in the sampling design, where plot or point placement determines what landscape feature is sampled. Randomization of sampling locations will eliminate much bias, but choice of statistical methods and sampling units should also be examined for bias.

9. Calibration and Standardization

9.1 Though useful information may be obtained from direct application of habitat quality index models, added value may result from calibration of model parameters to population density data generated at or near the project area during recent times (within a period that generally reflects current ecological conditions).

10. Procedure

10.1 Overview:

10.1.1 The U.S. EPA (1, 3) described an overall process for the performance of EcoRAs. Specifically it provides a framework for incorporating habitat quality characteristics into exposure and effects calculations; however, it proposed no specific methods for doing so. This guide describes the steps within the three stages (problem formulation, analysis, and characterization) of the U.S. EPA EcoRA process. The procedures that follow describe the steps to incorporate landscape features into the environmental management process. Specifically, an iterative approach is recommended to guide selection of appropriate assessment species, keyed to wildlife distribution ranges, and to a database of habitat suitability models. The choice of assessment species is cross-linked with the EPA exposure handbook species (2). Data collection needs for reconnaissance-, screening- and definitive-level characterization of habitat quality for potential assessment species are dictated by the project specific sampling and analysis plan that would be used to generate spatially explicit descriptions of habitat quality for various assessment species. Finally, calculations are presented that allocate exposure estimates using both habitat quality and spatial variations in chemical concentration or intensity of other agents (for example, magnitude of biological or physical stressor impinging on the assessment species).

10.1.2 Habitat considerations can be incorporated into the U.S. EPA Framework (1) for EcoRAs and the 8-step guidance (3) for conducting risk assessments at superfund sites (5). Ecological risk assessments should be performed only in those cases where ecological receptors occur or would likely occur, but for the influence of one or more agents (Fig. 2). A simple reconnaissance of the project area by qualified persons should be conducted at the earliest stages of a project in order to ascertain the actual or potential occurrence of ecological receptors. If receptors are not present or would not likely occur (for example, an asphalt parking area in an urban/industrial zone), then it would be impractical to proceed with an EcoRA.

10.2 Problem Formulation Phase:

10.2.1 The key goals of problem formulation are to outline the potential problem and develop a plan for analyzing and characterizing risk. Three interdependent products of problem formulation are the identification of assessment species,

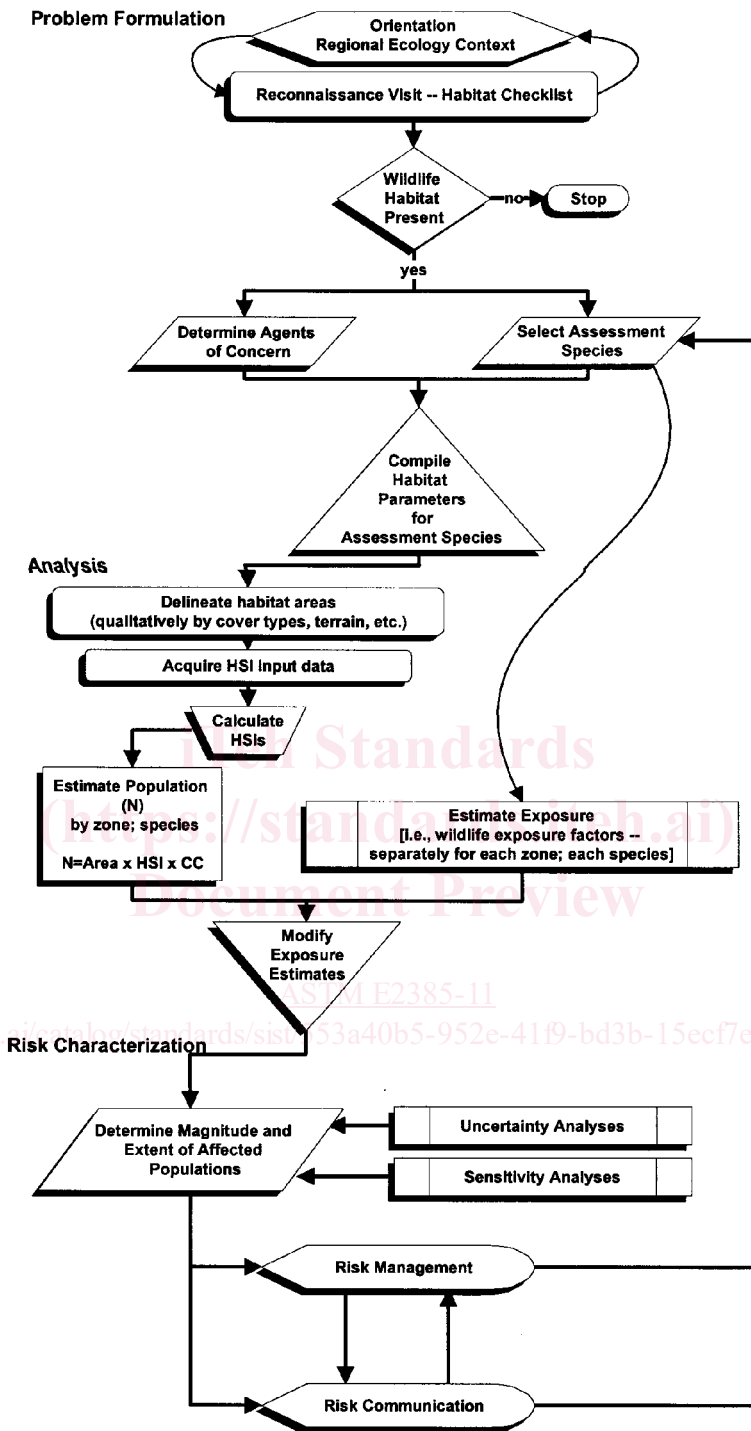


FIG. 2 Process Flow-Diagram Illustrating the Places Where Habitat Considerations can be Used in the Ecological Risk Assessment Framework (CC=carrying capacity)

identification of assessment endpoints, and construction of the conceptual model of the site (3). The EPA framework can be expanded to incorporate species-specific habitat quality into the iterative steps used in problem formulation. Selection of contaminants of concern and developing an analysis plan are not affected by the inclusion of habitat considerations in the process.

10.2.2 Landscape Mapping:

10.2.2.1 Early in problem formulation, landscape cover types should be identified and mapped. Also, other features critical to particular wildlife use patterns that can affect ecological resources, such as areas subject to human activities, should be noted. Mapping creates a picture of the site that is critical to determining the interaction of the stressors with the receptors, and such

relationships are used in computing habitat suitability for many species. Even very coarse resolution landscape maps can be informative as to whether a risk assessment is even necessary. For example, if no suitable habitat exists at the site (for example, if the site is entirely paved), an EcoRA may not be warranted. Mapping unit resolution should be considered carefully, as it has consequences for subsequent decisions in the EcoRA process. Apparent homogeneity of the landscape, spatial extent of stressors of interest, potential home-range/foraging range of wildlife species, and cost are important factors in defining the appropriate mapping unit resolution.

10.2.3 *Ecological Context of the Site:*

10.2.3.1 Readily available information about the site and its surrounding's ecological characteristics should be compiled. This may include information on geomorphology, potential natural vegetation, fauna, climate, surface water characteristics, disturbance regime, and land uses. There are two reasons for gathering this information. The first, in conjunction with the habitat map, is to identify a suite of species from which appropriate assessment species may be selected. The second is to aid in developing the site conceptual model by identifying the likely spatial and temporal patterns of use of the site by organisms, and identify and evaluate potential exposure pathways. Species lists from publications, reports, or interviews with local experts should be compiled.

10.2.3.2 Information from the mapping and data compilation steps may be compiled in an environmental checklist. Key questions that may be addressed by the checklist include:

(1) What is the environmental setting; including natural areas (for example, upland forest, on-site stream, nearby wildlife refuge) as well as disturbed/man-made areas (for example, waste lagoons)?

(2) What are the on- and off-site land uses (for example, industrial, residential, or undeveloped; current and future)? What type of facility existed or exists at the site?

(3) What are the suspected agents at the site?

(4) Which habitats present on site potentially are affected by biological agents, chemicals, or otherwise disturbed?

(5) Have biological agents or chemicals migrated from source areas and resulted in “off-site” impacts or the threat of impacts in addition to on-site threats or impacts?

(6) What species that are likely or known to be present on the site might comprise suitable assessment species?

10.2.4 *Selection of Assessment Species:*

10.2.4.1 The suite of species used for the EcoRA ultimately must be assessable; that is data must be available to calculate or to infer exposure to and effects of stressors. Frequently, surrogate species are used to represent broadly defined groups of potentially important species defined primarily by trophic levels (that is, a mammalian herbivore, an avian insectivore, or a top carnivore). The ecological relevance of the species used in the assessment is frequently a contentious point of debate. But monetary constraints typically limit the opportunities to perform the assessment anew using more relevant species. If a broader suite of species were considered as assessment species at the outset, such arguments could be avoided. To do so requires a structured approach that considers all potential species at a site and documents in the administrative record the rationale for narrowing the list to a manageable number.

10.2.4.2 The central premise of our approach is that the highest quality EcoRAs are those that focus on assessment species for which both wildlife habitat requirements/preferences and exposure parameters (dietary preferences, feeding rates, metabolic rates, etc.) are known. To achieve a high quality EcoRA using species for which such information is missing requires considerable commitment of time and money in order to obtain the requisite data. High profile sites (that is, sites of great interest to the public or with societal importance) may warrant the expenditures to gather the information. However, for most sites collection of basic biological or ecological data is beyond consideration. In such situations, a transparent process could facilitate communication among stakeholders and improve acceptance of the risk assessment.

10.2.4.3 A prioritized list of potential assessment species relevant to a particular site should be developed from a comprehensive wildlife species list compiled from prior knowledge of the site. Priority might be given to species according to their perceived societal value, availability of relevant descriptions of habitat requirements for the species in the project area, and information regarding exposure parameters. Criteria also may include trophic position within the food web to reflect appropriate exposure considerations for the agent of concern. The list of potential assessment species determine which landscape features should be evaluated in order to characterize habitat quality. Once the candidate assessment species have been identified, the habitat models can be used to develop the sampling plan.

10.2.4.4 Habitat Suitability Index (HSIs) models provide one means of characterizing habitat quality. The majority of the variables used in terrestrial and wetland HSI models are routine measurements of vegetation or other landscape-level features (5, 19). These include parameters such as percentage canopy cover, distance between cover types (for example, forest edge to water; forest patch to forest patch), or other features that can be acquired from aerial imagery. Other variables require on-site determination, such as height of shrub canopy, percentage herbaceous cover under a forest canopy, size-class distribution of trees, etc. Still others require detailed quantification of plant community structure variables, such as the number of nesting cavities in large trees. Alternative measures of habitat quality maybe used; to do so, simply substitute the HSI values with the values from the alternative method throughout the rest of this Standard Guide.

10.2.4.5 Examination of particular HSI equations also reveals differences in sensitivities of the variables. Qualitative sensitivity features of the models have been coded in a comment field in the database. For scoping- or screening-level assessments, estimates of variables that are particularly difficult to quantify can provide a rapid, preliminary indication of the importance of gathering