



Designation: F970 – 07(Reapproved 2011)

## Standard Test Method for Static Load Limit<sup>1</sup>

This standard is issued under the fixed designation F970; the number immediately following the designation indicates the year of original adoption or, in the case of revision, the year of last revision. A number in parentheses indicates the year of last reapproval. A superscript epsilon ( $\epsilon$ ) indicates an editorial change since the last revision or reapproval.

### 1. Scope

1.1 This test method is intended for use in determining the recovery properties of resilient floor covering after long-term indentation test, 24 h under the load specified in the detail specification. The reported value, residual indentation, is the depth of the depression remaining 24 h after removal of the specified load.

1.2 The values stated in inch-pound units are to be regarded as standard. The values given in parentheses are mathematical conversions to SI units that are provided for information only and are not considered standard.

1.3 *This standard does not purport to address all of the safety concerns, if any, associated with its use. It is the responsibility of the user of this standard to establish appropriate safety and health practices and determine the applicability of regulatory limitations prior to use.*

### 2. Referenced Documents

2.1 *ASTM Standards:*<sup>2</sup>

E171 Practice for Conditioning and Testing Flexible Barrier Packaging

E691 Practice for Conducting an Interlaboratory Study to Determine the Precision of a Test Method

F386 Test Method for Thickness of Resilient Flooring Materials Having Flat Surfaces

F387 Test Method for Measuring Thickness of Resilient Floor Covering With Foam Layer

F1914 Test Methods for Short-Term Indentation and Residual Indentation of Resilient Floor Covering

<sup>1</sup> This test method is under the jurisdiction of ASTM Committee F06 on Resilient Floor Coverings and is the direct responsibility of Subcommittee F06.30 on Test Methods - Performance.

Current edition approved Nov. 1, 2011. Published November 2011. Originally approved in 1987. Last previous edition approved in 2007 as F970-07. DOI: 10.1520/F0970-07R11.

<sup>2</sup> For referenced ASTM standards, visit the ASTM website, www.astm.org, or contact ASTM Customer Service at service@astm.org. For *Annual Book of ASTM Standards* volume information, refer to the standard's Document Summary page on the ASTM website.

### 3. Significance and Use

3.1 This test method is a meaningful test for determining the indentation recovery properties of resilient floor covering.<sup>3</sup>

3.2 As testing is conducted on uninstalled flooring, results are not necessarily an indicator of the floor covering's installed performance.<sup>3</sup>

### 4. Apparatus

4.1 The following apparatus shall be used:

4.2 *Conditioning Room*, providing the standard laboratory atmosphere of  $50 \pm 5$  % relative humidity at a temperature of  $73.4 \pm 3.6^\circ\text{F}$  ( $23 \pm 2.0^\circ\text{C}$ ).

4.3 *Indentation Machine*, as described in Section 12 and pictured in Fig. 2 of Test Method F1914.

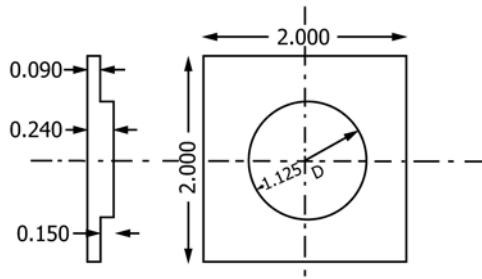
4.4 *Indenter Plates*, each constructed of a piece of 2-in. (50.8 mm) square stainless steel,  $0.240 \pm 0.005$  in. ( $6.1 \pm 0.1$  mm) thick, with one side turned to 1.125 in. (28.6 mm) in diameter (one square inch area) to depth of 0.150 in. (3.8 mm) (see Fig. 1).

4.5 *Dial Micrometer*, as described in Test Method F386 when measuring resilient floor coverings containing a foam layer as part of the construction or as described in Test Method F387 when measuring all other resilient floor coverings.

4.6 *Template of Poly(methyl Methacrylate) (PMMA)*, or of other transparent material, 2 by 2 in. (50.8 by 50.8 mm) with round scratch line centered on the template that is 1.125 in. (28.58 mm) in diameter, defining the test area, and with a  $\frac{1}{2}$  in. (12.7 mm) diameter hole at the center of the template to draw a circle on the specimen where thickness will be measured.

4.7 *Die*, 2 by 2 in. (50.8 by 50.8 mm) and press, papercutter, or equivalent to cut specimens to 2 by 2 in. size (50.8 by 50.8 mm).

<sup>3</sup> For additional information, see Resilient Floor Covering Institute (RFCI) document, Static Limit Testing of Resilient Flooring Products, available from RFCI, 401 E. Jefferson, Suite 102, Rockville, MD 20850, www.rfci.com



NOTE 1—All dimensions are in inches. Tolerance is  $\pm 0.005$  in. ( $\pm 0.1$  mm).

Metric Equivalents:

Inches	Millimetres
2.000	50.8
1.125	28.6
0.240	6.1
0.150	3.8
0.090	2.3

FIG. 1 Indenter Plates for Static Load Limit Test

4.8 *Optional*—Open box without spring clips for 2 by 2 in. (50.8 by 50.8 mm) photographic slides, or equivalent, to separate specimens during conditioning and recovery periods.

### 5. Sampling, Test Specimens and Test Units

5.1 The specimens shall be 2 by 2 in. (50.8 by 50.8 mm). The test unit shall consist of three specimens.

5.2 The central one square inch test area of each specimen should be free of mortar lines or other embossing lines, if possible. If not possible, the largest flat, raised area should be centered on the specimen.

5.3 If the sample is nubble embossed, the specimen should be cut so that a nub is at the center of the specimen where the specimen will be measured.

5.4 A circle slightly larger than the 0.250 in. (6.35 mm) diameter foot of the thickness gauge (4.5) is drawn on the wear layer at the center of the specimen, using the PMMA template (4.6), to ensure that thickness measurements are made at the same spot.

### 6. Conditioning

6.1 Condition the test unit at least 16 h at  $73.4 \pm 3.6^\circ\text{F}$  ( $23.0 \pm 2.0^\circ\text{C}$ ) and  $50 \pm 5\%$  relative humidity and test in the same environment (see Specification E171).

### 7. Procedures

7.1 Measure the initial thickness of each specimen, wear layer up, at the center of the specimen using the dial micrometer. Record the value to the nearest 0.001 in. (0.025 mm) as  $T_1$ .

7.2 Place the 2 by 2 in. (50.8 by 50.8 mm) indenter plate on top of the 2 by 2 in. (50.8 by 50.8 mm) specimen with the 1.125 in. (28.58 mm) diameter surface flat against the wear layer of the specimen.

7.3 Stack the remaining specimens and indenter plates as shown in Fig. 2. Place as many specimen/indenter plate sets under the indentation machine plunger as will fit.

7.4 Square the stack of specimen/indenter plate sets and then center the stack under the plunger of the indentation machine.

7.5 Check all clearances to be sure that the plunger and major load shaft with weight platform and weights will be free to move down without restriction as the height of the stack of specimens diminishes during test. If necessary, place a metal spacer above or below the plunger, and adjust the position of the collar on the plunger that supports a dial indicator (not used for static load test) to ensure adequate clearances during test.

7.6 Apply the load according to the detail specification (75, 125, 175, or 250 lb) by lowering gently, without impact.

7.7 Remove the load after  $24 \pm 0.25$  h and separate the specimens from the indenter plates. Place the specimens individually on a horizontal surface with the wear layer up or on edge in a slide box to recover.

7.8 Allow specimens to recover for  $24 \pm 0.25$  h. Measure the final thickness at the same point used to determine initial thickness. Record the value to the nearest 0.001 in (0.025 mm) as  $T_2$ .

### 8. Calculation

8.1 Calculate the residual indentation for each specimen as follows:

$$\text{Residual indentation} = T_1 - T_2 \quad (1)$$

where:

$T_1$  = initial thickness of uncompressed specimens, and  
 $T_2$  = thickness of the specimen after the 24 h recovery period.

### 9. Report

9.1 Report the following information:

9.1.1 Complete identification of the product tested including type, source and manufacturer's reference numbers,

9.1.2 The applied load,

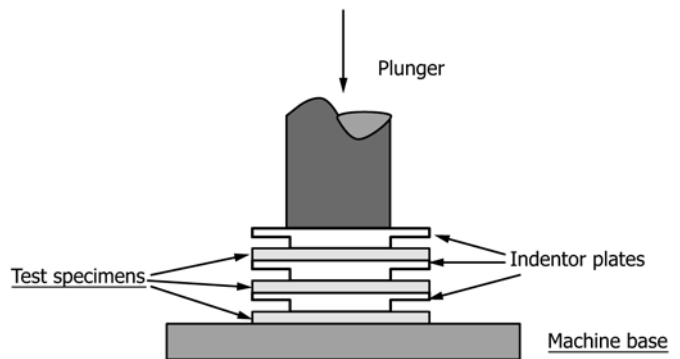


FIG. 2 Test Specimen Stacking Procedure