



Designation: D1946 – 90(Reapproved 2011)

Standard Practice for Analysis of Reformed Gas by Gas Chromatography¹

This standard is issued under the fixed designation D1946; the number immediately following the designation indicates the year of original adoption or, in the case of revision, the year of last revision. A number in parentheses indicates the year of last reapproval. A superscript epsilon (ϵ) indicates an editorial change since the last revision or reapproval.

1. Scope

1.1 This practice covers the determination of the chemical composition of reformed gases and similar gaseous mixtures containing the following components: hydrogen, oxygen, nitrogen, carbon monoxide, carbon dioxide, methane, ethane, and ethylene.

1.2 The values stated in SI units are to be regarded as standard. No other units of measurement are included in this standard.

1.3 *This standard does not purport to address all of the safety concerns, if any, associated with its use. It is the responsibility of the user of this standard to establish appropriate safety and health practices and determine the applicability of regulatory limitations prior to use.*

2. Referenced Documents

2.1 *ASTM Standards:*²

E260 Practice for Packed Column Gas Chromatography

3. Summary of Practice

3.1 Components in a sample of reformed gas are physically separated by gas chromatography and compared to corresponding components of a reference standard separated under identical operating conditions, using a reference standard mixture of known composition. The composition of the reformed gas is calculated by comparison of either the peak height or area response of each component with the corresponding value of that component in the reference standard.

4. Significance and Use

4.1 The information about the chemical composition can be used to calculate physical properties of the gas, such as heating (calorific) value and relative density. Combustion

¹ This practice is under the jurisdiction of ASTM Committee D03 on Gaseous Fuels and is the direct responsibility of Subcommittee D03.07 on Analysis of Chemical Composition of Gaseous Fuels.

Current edition approved Nov. 1, 2011. Published December 2011. Originally approved in 1962. Last previous edition approved in 2006 as D1946 – 90 (2006). DOI: 10.1520/D1946-90R11.

² For referenced ASTM standards, visit the ASTM website, www.astm.org, or contact ASTM Customer Service at service@astm.org. For *Annual Book of ASTM Standards* volume information, refer to the standard's Document Summary page on the ASTM website.

characteristics, products of combustion, toxicity, and interchangeability with other fuel gases may also be inferred from the chemical composition.

5. Apparatus

5.1 *Detector*—The detector shall be a thermal conductivity type or its equivalent in stability and sensitivity. The thermal conductivity detector must be sufficiently sensitive to produce a signal of at least 0.5 mV for 1 mol % methane in a 0.5-mL sample.

5.2 *Recording Instruments*—Either strip chart recorders or electronic integrators, or both, are used to display the separated components. Although a strip chart recorder is not required when using electronic integration, it is highly desirable for evaluation of instrument performance.

5.2.1 The recorder, when used, shall be a strip chart recorder with a full-range scale of 5 mV or less (1 mV preferred). The width of the chart shall be not less than 150 mm. A maximum pen response time of 2 s (1 s preferred) and a minimum chart speed of 10 mm/min shall be required. Faster speeds up to 100 mm/min are desirable if the chromatogram is to be interpreted using manual methods to obtain areas.

5.2.2 *Electronic or Computing Integrators*—Proof of separation and response equivalent to that for the recorder is required for displays other than by chart recorder.

5.3 *Attenuator*—If manual methods are used to interpret the chromatogram, an attenuator must be used with the detector output signal to keep the peak maxima within the range of the recorder chart. The attenuator must be accurate to within 0.5 % between the attenuator range steps.

5.4 *Sample Inlet System:*

5.4.1 The sample inlet system must be constructed of materials that are inert and nonadsorptive with respect to the components in the sample. The preferred material of construction is stainless steel. Copper and copper-bearing alloys are unacceptable.

5.4.2 Provision must be made to introduce into the carrier gas ahead of the analyzing column a gas-phase sample that has been entrapped in either a fixed volume loop or tubular section. The injected volume must be reproducible such that successive runs of the same sample agree within the limits of repeatability for the concentration range as specified in 11.1.1.

5.4.3 If the instrument is calibrated with pure components, the inlet system shall be equipped to introduce a sample at less than atmospheric pressure. The pressure-sensing device must be accurate to 0.1 kPa (1 mm Hg).

5.5 Column Temperature Control:

5.5.1 *Isothermal*—When isothermal operation is used, the analytical columns shall be maintained at a temperature constant to 0.3°C during the course of the sample run and the corresponding reference run.

5.5.2 *Temperature Programming*—Temperature programming may be used, as feasible. The oven temperature shall not exceed the recommended temperature limit for the materials in the column.

5.6 *Detector Temperature Control*—The detector temperature shall be maintained at a temperature constant to 0.3°C during the course of the sample run and the corresponding reference run. The detector temperature shall be equal to, or greater than, the maximum column temperature.

5.7 *Carrier Gas*—The instrument shall be equipped with suitable facilities to provide flow of carrier gas through the analyzer and detector at a flow rate that is constant to 1 % throughout the analysis of the sample and the reference standard. The purity of the carrier gas may be improved by flowing the carrier gas through selective filters before its entry into the chromatograph.

5.8 Columns:

5.8.1 The columns shall be constructed of materials that are inert and nonadsorptive with respect to the components in the sample. The preferred material of construction is stainless steel. Copper and copper-bearing alloys are unacceptable.

5.8.2 Either an adsorption-type column or a partition-type column, or both, may be used to make the analysis.

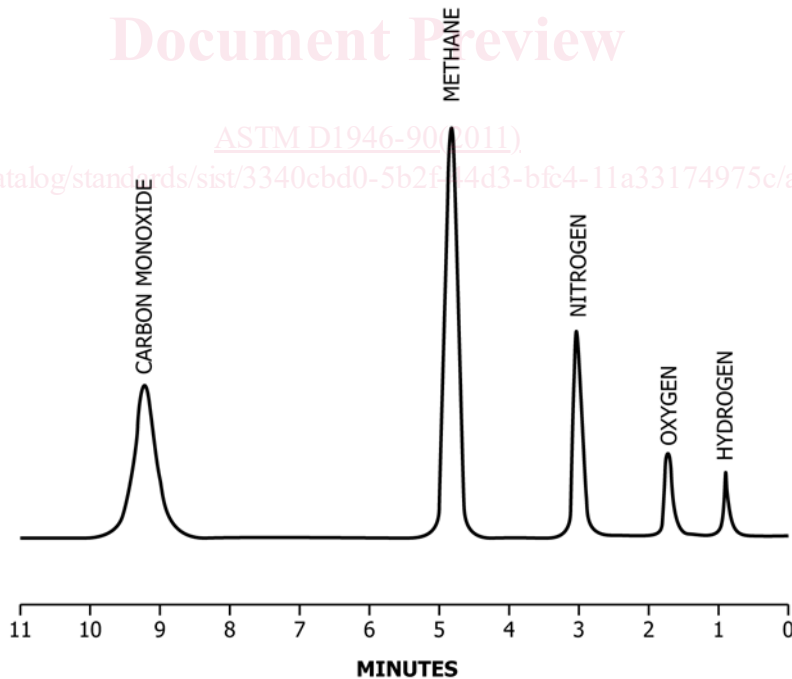
NOTE 1—See Practice E260 for general gas chromatography procedures.

5.8.2.1 *Adsorption Column*—This column must completely separate hydrogen, oxygen, nitrogen, methane, and carbon monoxide. If a recorder is used, the recorder pen must return to the baseline between each successive peak. Equivalent proof of separation is required for displays other than by chart recorder. Fig. 1 is an example chromatogram obtained with an adsorption column.

(1) Because of similarities in thermal conductivities, helium should not be used as the carrier gas for hydrogen when hydrogen is less than 1 % of the sample. Either argon or nitrogen carrier gas is suitable for both percent and parts per million quantities of hydrogen.

(2) The use of a carrier gas mixture of 8.5 % hydrogen and 91.5 % helium will avoid the problem of reversing polarities of hydrogen responses as the concentration of hydrogen in the sample is increased.

(3) The precision of measurement of hydrogen can be increased by using a separate injection for hydrogen, using either argon or nitrogen for the carrier gas.



Column: 2-m by 6-mm inside diameter Type 13x molecular sieves, 14 to 30 mesh
Temperature: 35°C

Flow rate: 60-mL helium/min
Sample size: 0.5 mL

FIG. 1 Chromatogram of Reformed Gas on Molecular Sieve Column