

© ISO 2022 – All rights reserved

ISO/FDIS 14083:2022(E)

Date: 2022-12-01

ISO/TC 207/SC 7/WG 14

Secretariat: SCC

Greenhouse gases — Quantification and reporting of greenhouse gas emissions arising from transport chain operations

Gaz à effet de serre — Quantification et déclaration des émissions de gaz à effet de serre résultant des opérations des chaînes de transport

iTeh STANDARD PREVIEW
(standards.iteh.ai)

ISO 14083

<https://standards.iteh.ai/catalog/standards/sist/5c1659be-61c2-4f14-993a-52/iso-14083>

FDIS stage

© ISO 2022

All rights reserved. Unless otherwise specified, or required in the context of its implementation, no part of this publication may be reproduced or utilized otherwise in any form or by any means, electronic or mechanical, including photocopying, or posting on the internet or an intranet, without prior written permission. Permission can be requested from either ISO at the address below or ISO's member body in the country of the requester.

ISO Copyright Office
CP 401 • CH-1214 Vernier, Geneva
Phone: + 41 22 749 01 11
Email: copyright@iso.org
Website: www.iso.org
Published in Switzerland.

iTeh STANDARD PREVIEW (standards.iteh.ai)

ISO 14083

<https://standards.iteh.ai/catalog/standards/sist/5c1639be-66c2-4f14-993a-ee2b9d6c1a52/iso-14083>

Contents

Foreword.....	vii
Introduction.....	viii
1 Scope.....	1
2 Normative references	1
3 Terms and definitions.....	1
3.1 Terms related to transport chain operations.....	1
3.2 Terms related to greenhouse gases and energy.....	7
3.3 Terms related to quantification.....	10
3.4 Other terms	12
4 General principles.....	13
4.1 General.....	13
4.2 Relevance	13
4.3 Completeness.....	13
4.4 Consistency.....	13
4.5 Accuracy	13
4.6 Transparency.....	13
4.7 Conservativeness.....	13
5 Quantification principles	13
5.1 General.....	13
5.2 System boundaries.....	14
5.2.1 Transport operations and hub operations included.....	14
5.2.2 Processes included.....	14
5.2.3 Application of cut-off criteria	15
5.2.4 Processes not included	16
5.2.5 Optional processes.....	16
5.2.6 Optional quantification of black carbon emissions from transport operations	16
5.2.7 Carbon offsetting and GHG emissions trading	16
5.3 Conversion of energy carrier data into GHG emissions	17
5.3.1 General.....	17
5.3.2 Global warming potential.....	17
5.4 Calculation of transport activity.....	17
5.4.1 Passenger transport.....	17
5.4.2 Freight transport.....	17
5.4.3 Combined transport of freight and passengers (including passenger vehicles)	18
5.4.4 Use of distance adjustment factor	19
5.5 Calculation of hub activity	19
5.5.1 Passenger hub	19
5.5.2 Freight hub	19
5.5.3 Combined freight and passenger hub (including passenger vehicles)	19
5.6 Allocation	20
5.6.1 General.....	20
5.6.2 Allocation between passengers and freight.....	20
5.6.3 Allocation between passengers of different travel classes	20
5.6.4 Allocation between ambient and temperature-controlled freight.....	20
6 General principles related to transport chains, transport chain elements, transport operation categories and hub operation categories	21
6.1 Transport chains and TCEs.....	21

6.2	Transport operations and hub operations related to TCEs	21
6.3	Transport operation categories and hub operation categories	22
6.3.1	General.....	22
6.3.2	Transport operation categories.....	23
6.3.3	Hub operation categories.....	25
7	Quantification actions	27
7.1	General.....	27
7.2	Establishment of GHG emission intensity of a TOC or a HOC.....	28
7.2.1	General.....	28
7.2.2	Selection of the option	28
7.2.3	Calculation with primary data (option A).....	29
7.2.4	Calculation with a model (option B).....	29
7.2.5	Selection of a value from a database of default values (option C).....	29
7.2.6	Collection of a value from a contracted operator (option D).....	29
7.3	Calculation of GHG emissions for a TCE.....	29
7.4	Calculation of GHG emissions for a transport chain.....	30
8	Quantification actions at the TOC level.....	30
8.1	General.....	30
8.2	Quantification of the GHG activity data of a TOC	30
8.3	Calculation of GHG emissions of a TOC	31
8.3.1	General.....	31
8.3.2	No allocation needed	31
8.3.3	Allocation needed.....	32
8.4	Calculation of transport activity of a TOC.....	33
8.4.1	General.....	33
8.4.2	Transport activity distance	33
8.4.3	Transport activity of a TOC of passengers — General case.....	33
8.4.4	Transport activity of a TOC of freight — General case.....	33
8.4.5	Transport activity of a TOC of passengers with multi-class vehicles.....	34
8.4.6	Transport activity of a TOC of freight with multi-temperature vehicles.....	35
8.4.7	Transport activity of a TOC with passengers and freight (whether including passenger vehicles or not).....	36
8.4.8	Transport activities of a TOC with any other case	37
8.5	Calculation of GHG emission intensity for the TOC.....	37
8.5.1	General.....	37
8.5.2	General case	37
8.5.3	Case of a TOC of freight with multi-temperature vehicles.....	38
9	Quantification actions at the HOC level	39
9.1	General.....	39
9.2	Quantification of the GHG activity data of a HOC.....	39
9.3	Calculation of GHG emissions of a HOC.....	40
9.3.1	General.....	40
9.3.2	No allocation needed	40
9.3.3	Allocation needed	41
9.4	Quantification of hub activity of the HOC.....	42
9.4.1	Freight hub activity	42
9.4.2	Passenger hub activity	42
9.5	Calculation of GHG emission intensity for the HOC	42
9.5.1	General.....	42
9.5.2	General case	43
9.5.3	Case of a HOC of freight with multi-temperature conditions.....	43

10	Calculation of GHG emissions for a transport TCE.....	44
10.1	General.....	44
10.2	Calculation of transport activity.....	44
10.3	Selection of a GHG emission intensity.....	44
10.4	General case.....	44
10.5	Case of differentiation by passenger classes.....	45
10.6	Case of differentiation by cargo temperature.....	45
10.7	Case of transport of passengers and freight in the same vehicle.....	45
11	Calculation of GHG emissions for a hub TCE.....	45
11.1	General.....	45
11.2	Quantification of hub activity.....	45
11.3	Selection of a GHG emission intensity.....	45
11.4	General case.....	45
11.5	Case of differentiation by cargo temperature.....	46
11.6	Case of transfer of passengers and freight at the same hub.....	46
12	Results.....	46
12.1	For one transport chain.....	46
12.1.1	Calculation of GHG emissions.....	46
12.1.2	Calculation of transport activity.....	47
12.1.3	Calculation of GHG emission intensities.....	47
12.2	For a set of transport chains.....	47
12.2.1	General.....	47
12.2.2	Calculation of GHG emissions.....	47
12.2.3	Calculation of transport activity.....	48
12.2.4	Calculation of GHG emission intensities.....	48
12.3	For a transport service.....	48
12.4	For a set of transport services.....	48
12.5	For a transport mode.....	48
13	Reporting.....	48
13.1	General.....	48
13.2	Reporting at the organizational level.....	49
13.2.1	Reporting boundaries.....	49
13.2.2	Report.....	49
13.2.3	Periodicity.....	49
13.3	Reporting at the level of transport or hub services.....	50
13.3.1	Granularity.....	50
13.3.2	Report.....	50
13.4	Supporting information.....	51
13.4.1	General.....	51
13.4.2	Description of the calculation method.....	51
13.4.3	Transparent reporting from the use of modelled data or default GHG emission intensities.....	61
Annex A (normative)	Air transport.....	63
Annex B (normative)	Cable car transport.....	65
Annex C (normative)	Inland waterway transport.....	67
Annex D (normative)	Transport by pipeline.....	69
Annex E (normative)	Rail transport.....	71
Annex F (normative)	Road transport.....	75
Annex G (normative)	Sea transport.....	79

ISO/FDIS 14083:2022(E)

Annex H (normative) Hubs	86
Annex I (normative) Approach to account for refrigerant leakage GHG emissions from mobile air conditioning and temperature-controlled freight units during transportation operations	91
Annex J (normative) Additional requirements and guidance for GHG emission factors.....	95
Annex K (informative) GHG emission factors and sources	99
Annex L (informative) Additional guidance for allocation to passenger according to passenger class of travel	104
Annex M (informative) General guidance on the approach to modelling of GHG emissions of transport chains	111
Annex N (informative) Additional guidance for use of ICT equipment and data servers related to transport operations	116
Annex O (informative) Quantification of GHG emissions arising from (re)packaging processes at logistics hubs.....	119
Annex P (informative) Quantification of black carbon emissions from transport operations ..	121
Annex Q (informative) Selection of sources of default GHG emission intensities	124
Annex R (informative) Comparison of GHG emission categorization used in the GHG Protocol and this document	126
Bibliography.....	131

(standards.iteh.ai)

ISO 14083

<https://standards.iteh.ai/catalog/standards/sist/5c1639be-66c2-4f14-993a-ee2b9d6c1a52/iso-14083>

Foreword

ISO (the International Organization for Standardization) is a worldwide federation of national standards bodies (ISO member bodies). The work of preparing International Standards is normally carried out through ISO technical committees. Each member body interested in a subject for which a technical committee has been established has the right to be represented on that committee. International organizations, governmental and non-governmental, in liaison with ISO, also take part in the work. ISO collaborates closely with the International Electrotechnical Commission (IEC) on all matters of electrotechnical standardization.

The procedures used to develop this document and those intended for its further maintenance are described in the ISO/IEC Directives, Part 1. In particular, the different approval criteria needed for the different types of ISO documents should be noted. This document was drafted in accordance with the editorial rules of the ISO/IEC Directives, Part 2 (see www.iso.org/directives).

Attention is drawn to the possibility that some of the elements of this document may be the subject of patent rights. ISO shall not be held responsible for identifying any or all such patent rights. Details of any patent rights identified during the development of the document will be in the Introduction and/or on the ISO list of patent declarations received (see www.iso.org/patents).

Any trade name used in this document is information given for the convenience of users and does not constitute an endorsement.

For an explanation of the voluntary nature of standards, the meaning of ISO specific terms and expressions related to conformity assessment, as well as information about ISO's adherence to the World Trade Organization (WTO) principles in the Technical Barriers to Trade (TBT), see www.iso.org/iso/foreword.html.

This document was prepared by Technical Committee ISO/TC 207, *Environmental management*, Subcommittee SC 7, *Greenhouse gas and climate change management and related activities*, in collaboration with the European Committee for Standardization (CEN) Technical Committee CEN/TC 320, *Transport — Logistics and services*, in accordance with the Agreement on technical cooperation between ISO and CEN (Vienna Agreement).

This first edition cancels and replaces IWA 16:2015, which has been technically revised throughout to expand the framework to a methodology.

Any feedback or questions on this document should be directed to the user's national standards body. A complete listing of these bodies can be found at www.iso.org/members.html.

Introduction

This document provides requirements and guidance for the quantification and reporting of greenhouse gas (GHG) emissions for transport chains for passengers and freight.

This document provides such a calculation with its related reporting. It specifies how to source data as input for the calculation, taking into account that transport operations vary hugely, from multinational organizations operating multiple transport modes to deliver transport services across the globe, through small local operators delivering a simple service to a single user; hence this document has adopted a structure to make it widely applicable. To ensure that values for GHG emissions that result from vehicle and hub operation and associated energy provision are considered, this document takes into account the GHG emissions associated with production and distribution of energy (including, for example, production and distribution of liquid energy carriers or grid transmission of electricity). As a result, calculation results can enable a consistent comparison of possible different energy carriers by transport service operators, users and any other interested parties. Calculation results are only directly comparable if all options chosen are internally consistent.

This document covers all modes of transport (land, water or in the air, irrespective of the means of transport, i.e. vessel, vehicle or pipeline) and includes the operational GHG emissions from hubs where they facilitate transfer of freight or passengers from one element of a transport chain to the next. It takes account of operation of empty trips required for subsequent transportation of freight or passengers. It is applicable at all stages along the entire transport chain (see also illustrative examples in Figure 1 and Figure 2).

Figure 1 provides an illustrative example of a freight transport chain from the point where freight leaves its last point of production or transformation (A, freight consignor) to the point where freight reaches its first non-transport related operation (B, freight consignee). This transport chain consists of five transport chain elements (TCEs), the GHG emissions of which are calculated separately. The first and last TCEs (TCE 1, TCE 5) represent road services (C) covering pre- and on-carriage; TCE 2 to TCE 4 represent a rail freight service (D) composed of road/rail terminal operations (TCE 2, TCE 4) and main carriage by rail transport (TCE 3).

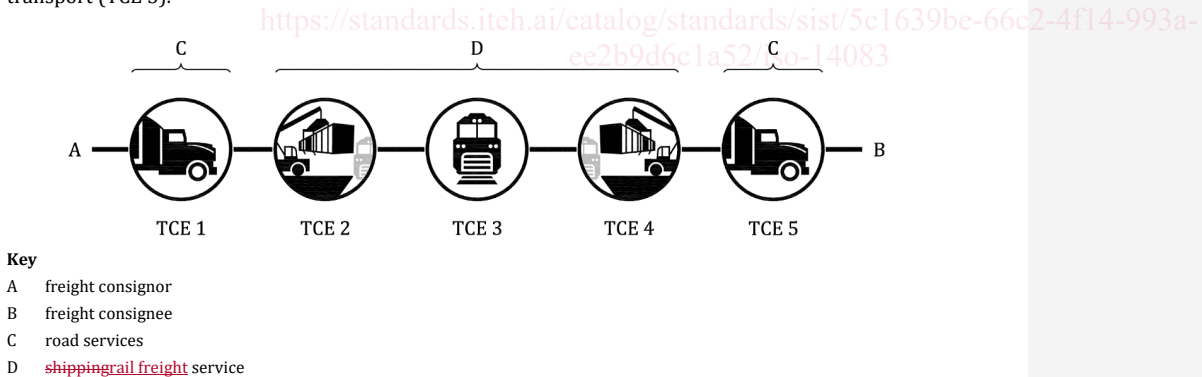
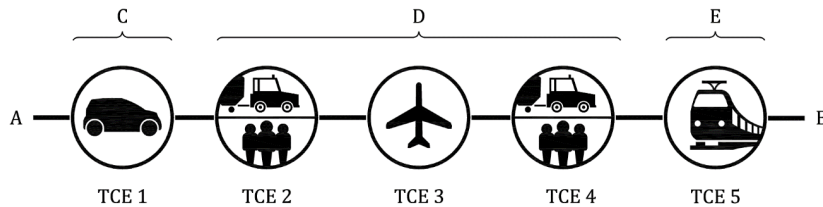


Figure 1 — Illustrative example of a multi-element freight transport chain

Figure 2 provides an illustrative example of a passenger transport chain from the point where passengers leave their departure location, A, to their destination, B. This transport chain consists of five transport chain elements (TCEs), the GHG emissions of which are calculated separately. The first one TCE (TCE 1) represents transport of the passenger from home to the airport by private car (C); TCE 2 to TCE 4 represent an air travel service (D) composed of passenger terminal operations for the passenger and

luggage (TCE 2, TCE 4) and main carriage by plane (TCE 3). The on-carriage represented by TCE 5 shows shuttle express via rail (E).



Key

- A departure location
- B destination
- C private car service
- D air travel service
- E shuttle express service via rail

Figure 2 — Illustrative example of a multi-element passenger transport chain

The reporting set out in this document reflects the need to report information between the parties in a transport chain because information known to the transport or hub operator, when reported to the user of their service, helps the latter to quantify, better manage and reduce the impacts of their transport or hub activities. This is a standard for GHG emission calculation only; therefore, offsetting is not part of this document.

This document is complementary to several existing standards. It is aligned with the ISO 14064 series and ISO 14067 (see Figure 3). It contributes to the carbon footprint of products (see ISO 14067) and the life cycle assessment in accordance with the ISO 14040 family of standards and ISO 14044. Figure 3 shows the relationship of this document to other International Standards of the ISO 14040 family of standards and the ISO 14060 family of standards, using the example of a freight transport chain and including possible stages within the life cycle of a product bought online as well as example topics to be covered by a company's GHG inventory.

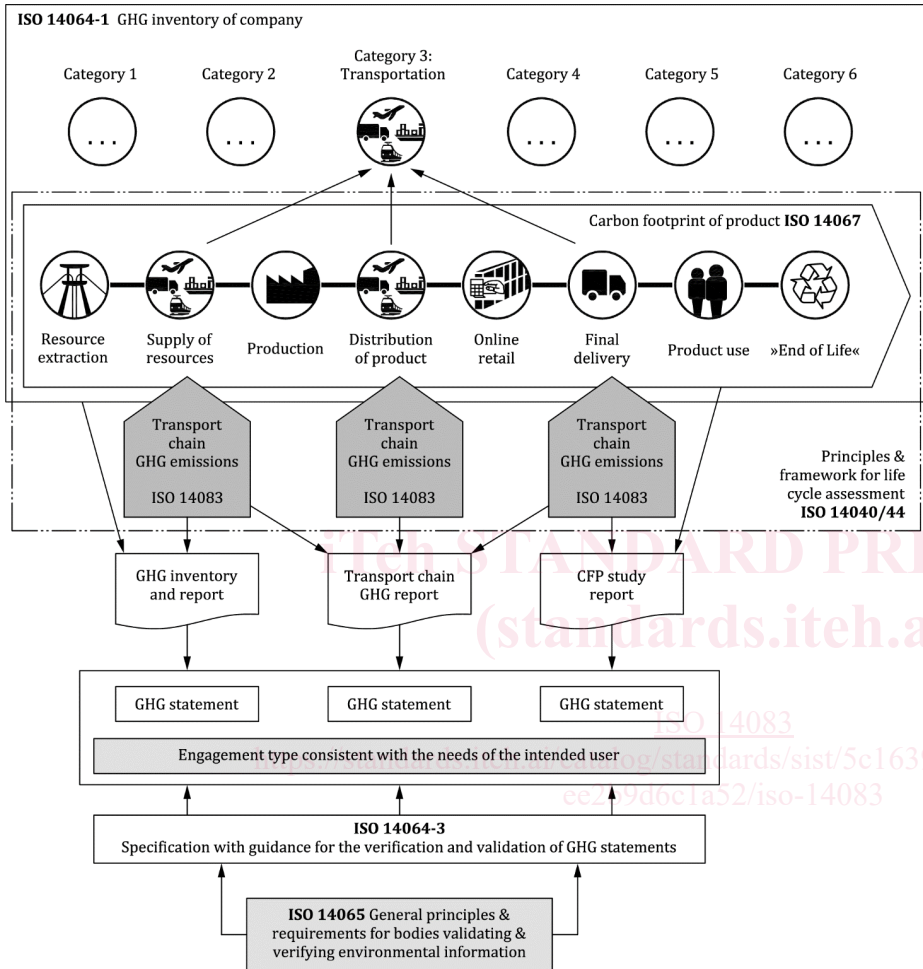


Figure 3 — Relationship between the ISO 14040 family of standards and the ISO 14060 family of standards, using the example of a freight transport chain

NOTE GHG emission intensity per tonne- or passenger-km calculated in accordance with this document can be used as primary or secondary data for GHG quantification projects in accordance with ISO 14067 and/or ISO 14064-1. These data require adaptation or modification if full life cycle based GHG-emissions are needed, for example e.g. vehicle manufacture or transport infrastructure provision.

~~This document includes the work which has been developed for freight transport in IWA 16:2015[13].~~ The approach acknowledges, and is in line with, the valuable work conducted on GHG calculation and reporting that is documented in the aforementioned standards and by other protocols and organizations, including but not limited to, the United Nations Framework Convention on Climate Change (UNFCCC),^[37]

ISO/FDIS 14083:2022(E)

the GHG Protocol^[16] and the Global Logistics Emissions Council (GLEC) Framework for Logistics Emissions Accounting and Reporting^[15].

iTeh STANDARD PREVIEW
(standards.iteh.ai)

ISO 14083

<https://standards.iteh.ai/catalog/standards/sist/5c1639be-66c2-4f14-993a-ee2b9d6c1a52/iso-14083>

Greenhouse gases — Quantification and reporting of greenhouse gas emissions arising from operations of transport chains

1 Scope

This document establishes a common methodology for the quantification and reporting of greenhouse gas (GHG) emissions arising from the operation of transport chains of passengers and freight.

2 Normative references

There are no normative references in this document.

3 Terms and definitions

For the purposes of this document, the following terms and definitions apply.

ISO and IEC maintain terminology databases for use in standardization at the following addresses:

- ISO Online browsing platform: available at <https://www.iso.org/obp>
- IEC Electropedia: available at ~~http~~<https://www.electropedia.org/>

3.1 Terms related to transport chain operations

3.1.1

cable car **ropeway**

transport system where *vehicles* (3.1.35) are moved by at least one cable ~~motorised~~**motorized** by a machinery.

Note 1 to entry: Vehicles ~~(3.1.35)~~ circulating on cable(s) whose movement is not transmitted by at least one cable are not considered cable cars. Vertical elevators are also not considered cable cars.

~~Note 2 to entry: Ropeway is used as an alternative term to cable car in some countries.~~

3.1.2

charter

contract for the hire of a specific *vehicle* (3.1.35) from an owner for a specified period of time for the charterer's purposes subject to agreed restrictions

3.1.3

collection and delivery round

trip with the purpose to collect and/or deliver *freight* (3.1.7) at successive locations along the trip

Note 1 to entry: Typically, but not necessarily, the trip starts and ends at the same location.

3.1.4

consignment

separately identifiable amount of *freight* (3.1.7) transported from one consignor to one consignee via one or more modes of transport

ISO/FDIS 14083:2022(E)

Note 1 to entry: Although “consignment” and “shipment” (3.1.20) are common terms often considered as synonyms, in this document and other technical publications, a consignment is differentiated to a shipment (3.1.20). Indeed, a shipment (3.1.20) refers to a grouping of freight (3.1.7) corresponding to the shipper needs, whereas a consignment refers a grouping of freight (3.1.7) according to a carrier or freight forwarder’s transport solutions.

[SOURCE: ISO 26683-1:2013, 3.9, modified — ~~Note 1 to entry added; reference to specification “freight” replaced “goods items (available to be)”. “and specified in a one single transport document removed, ‘goods’ replaced by ‘freight’ deleted. Note 1 to entry added.~~]

3.1.5 empty trip

section of the route of a *vehicle* (3.1.35) during which no *freight* (3.1.7) or *passenger* (3.1.16) is transported

EXAMPLE Vehicle (3.1.35) (re)positioning trips, empty backhauls.

3.1.6 fleet

set of *vehicles* (3.1.35) operated by one *transport operator* (3.1.30)

3.1.7 freight

goods, materials, commodities, parcels, etc. being transported from one location to another

[SOURCE: EN 14943:2005, 3.437, modified — “materials, commodities, parcels, etc.” added.]

3.1.8 hub

DEPRECATED: node;
~~DEPRECATED:~~ site;
~~DEPRECATED:~~ station;
~~DEPRECATED:~~ facility;
~~DEPRECATED:~~ centre;
~~DEPRECATED:~~ depot

location where *passengers* (3.1.16) transfer and/or *freight* (3.1.7) is transferred from one *vehicle* (3.1.35) or mode of transportation to another before, after or between different elements of a *transport chain* (3.1.25)

Note 1 to entry: Hubs include, but are not limited to, rail/road terminals, cross-docking sites, airport terminals, terminals at seaports and distribution ~~centers~~centres.

3.1.9 hub activity

parameter that quantifies the *throughput* (3.1.21) of a *hub* (3.1.8)

3.1.10 hub equipment

~~HE~~
equipment and facilities used within a *hub* (3.1.8) to transfer *freight* (3.1.7) or *passengers* (3.1.16)

3.1.11 hub operation

~~HO~~
operation in order to transfer *freight* (3.1.7) or *passengers* (3.1.16) through a *hub* (3.1.8)

3.1.12**hub operation category****HOC**

group of *hub operations* (3.1.11) that share similar characteristics

Note 1 to entry: Annex H contains examples of HOCs.

3.1.13**hub operator**

entity that carries out *hub operations* (3.1.11) involving carriage of *freight* (3.1.7) or *passengers* (3.1.16), or both

3.1.14**hub service**

service provided within a *hub* (3.1.8) ~~TCE~~*transport chain element* (3.1.26)

3.1.15**load factor**

ratio of the actual load to the maximum legally authorized load of a particular *vehicle* (3.1.35)

3.1.16**passenger(s)**

person(s) carried by a *vehicle* (3.1.35)

Note 1 to entry: The term and its abbreviation "pax" are also used as a unit for quantity of passengers.

Note 2 to entry: Where the word ~~'passengers'~~ "passengers" is used, it refers to one or more passengers unless specified in the context.

3.1.17**pipeline**

long continuous line of pipes, including ancillary equipment, used for transporting *freight* (3.1.7)

[SOURCE: ISO 6707-1:2020, 3.1.2.30, modified — "freight" ~~has~~ replaced "liquids or gases".]

3.1.18**pipeline transport**

movement of a medium (liquid, gas, liquefied gas, slurry) through a system of pipes from one location to another

3.1.19**round trip**

group of sequential journeys that start and end in the same place, whatever the intermediate routing

3.1.20**shipment**

identifiable collection of one or more *freight* (3.1.7) items (available to be) transported together from the original shipper to the ultimate consignee

Note 1 to entry: A shipment may be transported in one or a multiple number of *consignments* (3.1.4).

Note 2 to entry: A shipment can be aggregated or disaggregated to different consignments ~~(3.1.4)~~ according to the requirements of the means of transportation on any one element of the *transport chain* (3.1.25), e.g. single bulk units and packages can be aggregated on a pallet and such pallet can be handed over as a unit for aggregation in a container, which in turn is treated as a consignment ~~(3.1.4)~~ in a *vehicle* (3.1.35).