



SLOVENSKI STANDARD
SIST ISO 24487-1:2023

01-april-2023

Grafična tehnologija - Ofsetne plošče brez razvijanja - 1. del: Metode ocenjevanja lastnosti in uporabnosti

Graphic technology — Processless lithographic plates — Part 1: Evaluation methods for characteristics and performance

iTeh STANDARD PREVIEW
(standards.iteh.ai)

Technologie graphique — Plaques lithographiques sans traitement — Partie 1:
Méthodes d'évaluation des caractéristiques et des performances

<https://standards.iteh.ai/catalog/standards/sist/b0ebe714-205b-46a3-a61f-fc8bd19ccaf4/sist-24487-1-2023>

Ta slovenski standard je istoveten z: ISO 24487-1:2021

ICS:

37.100.10 Reprodukcijska oprema Reproduction equipment

SIST ISO 24487-1:2023

en

INTERNATIONAL
STANDARD

ISO
24487-1

First edition
2021-11

**Graphic technology — Processless
lithographic plates —**

**Part 1:
Evaluation methods for characteristics
and performance**

*Technologie graphique — Plaques lithographiques sans traitement —
Partie 1: Méthodes d'évaluation des caractéristiques et des
performances*

[SIST ISO 24487-1:2023](https://standards.iteh.ai/catalog/standards/sist/b0ebe714-205b-46a3-a61f-fc8bd19ccaf4/sist-iso-24487-1-2023)

<https://standards.iteh.ai/catalog/standards/sist/b0ebe714-205b-46a3-a61f-fc8bd19ccaf4/sist-iso-24487-1-2023>



Reference number
ISO 24487-1:2021(E)

© ISO 2021

iTeh STANDARD PREVIEW (standards.iteh.ai)

[SIST ISO 24487-1:2023](https://standards.iteh.ai/catalog/standards/sist/b0ebe714-205b-46a3-a61f-fc8bd19ccaf4/sist-iso-24487-1-2023)

<https://standards.iteh.ai/catalog/standards/sist/b0ebe714-205b-46a3-a61f-fc8bd19ccaf4/sist-iso-24487-1-2023>



COPYRIGHT PROTECTED DOCUMENT

© ISO 2021

All rights reserved. Unless otherwise specified, or required in the context of its implementation, no part of this publication may be reproduced or utilized otherwise in any form or by any means, electronic or mechanical, including photocopying, or posting on the internet or an intranet, without prior written permission. Permission can be requested from either ISO at the address below or ISO's member body in the country of the requester.

ISO copyright office
CP 401 • Ch. de Blandonnet 8
CH-1214 Vernier, Geneva
Phone: +41 22 749 01 11
Email: copyright@iso.org
Website: www.iso.org

Published in Switzerland

Contents

	Page
Foreword	iv
Introduction	v
1 Scope	1
2 Normative references	1
3 Terms and definitions	1
4 Test procedure	2
4.1 General.....	2
4.2 Test environment.....	2
4.3 Plate imaging.....	2
4.4 Pre-dampening amount.....	4
4.5 Pre-inking amount.....	4
4.6 Ink selection.....	4
4.7 Substrate selection.....	4
4.8 Fountain solution.....	5
4.9 Press preparation and control.....	5
4.9.1 Press preparation print run.....	5
4.9.2 Reference printing aim values.....	5
4.10 Printing method.....	6
4.11 Plate exposure to light.....	6
5 Assessment methods	6
5.1 General.....	6
5.2 On-press development.....	6
5.2.1 Number of sheets required for on-press development.....	6
5.2.2 Assessment of non-image area.....	7
5.2.3 Assessment of solid area.....	8
5.2.4 Assessment of intermediate tones.....	8
5.3 Abrasion resistance.....	9
5.4 Resistance to toning.....	9
5.5 Chemical resistance.....	11
5.5.1 General.....	11
5.5.2 Rub test.....	12
5.5.3 Drop test.....	12
5.6 Plate performance for stop and restart.....	12
6 Reporting requirements	12
Annex A (informative) Examples of measurement method and results	14
Annex B (informative) Example of evaluation results and classification	26
Annex C (informative) Examples of quality grade reporting	27
Bibliography	29

ISO 24487-1:2021(E)

Foreword

ISO (the International Organization for Standardization) is a worldwide federation of national standards bodies (ISO member bodies). The work of preparing International Standards is normally carried out through ISO technical committees. Each member body interested in a subject for which a technical committee has been established has the right to be represented on that committee. International organizations, governmental and non-governmental, in liaison with ISO, also take part in the work. ISO collaborates closely with the International Electrotechnical Commission (IEC) on all matters of electrotechnical standardization.

The procedures used to develop this document and those intended for its further maintenance are described in the ISO/IEC Directives, Part 1. In particular, the different approval criteria needed for the different types of ISO documents should be noted. This document was drafted in accordance with the editorial rules of the ISO/IEC Directives, Part 2 (see www.iso.org/directives).

Attention is drawn to the possibility that some of the elements of this document may be the subject of patent rights. ISO shall not be held responsible for identifying any or all such patent rights. Details of any patent rights identified during the development of the document will be in the Introduction and/or on the ISO list of patent declarations received (see www.iso.org/patents).

Any trade name used in this document is information given for the convenience of users and does not constitute an endorsement.

For an explanation of the voluntary nature of standards, the meaning of ISO specific terms and expressions related to conformity assessment, as well as information about ISO's adherence to the World Trade Organization (WTO) principles in the Technical Barriers to Trade (TBT), see www.iso.org/iso/foreword.html.

This document was prepared by Technical Committee ISO/TC 130, *Graphic technology*.

A list of all parts in the ISO 24487 series can be found on the ISO website.

Any feedback or questions on this document should be directed to the user's national standards body. A complete listing of these bodies can be found at www.iso.org/members.html.

Introduction

Processless plates represent a simple way to prepare plates in prepress. Once a plate has been imaged, it is mounted directly on the press where the plate coating is removed on start-up of the press. This approach eliminates the plate processor, associated chemistry, energy required to power the processor, water, and waste from plate preparation.

Perceived benefits of processless plates include ease of use and improved speed of production compared to traditional plate preparation systems since there is no need for a plate processor or finishing unit. Processless plates are mounted directly on press once imaged. Since costs associated with processors and finishing units, including developer and cleaning solution, time and labour are eliminated, printing using processless plates is perceived as a low-cost method.

The unique characteristic of processless plates is on-press development. After the exposure process by computer to plate (CTP) exposing equipment, the non-image area of the photosensitive layer is physically removed along with the ink and the fountain solution of the press.

The removal procedure is as follows.

- When the press is started, fountain solution and ink are applied. The fountain solution permeates the unexposed (non-image) area of the photosensitive layer. The unexposed photosensitive layer is then peeled from the base material by the viscosity of the printing ink.
- This peeled photosensitive layer is finely dispersed into the ink which is discharged on paper from the press in the usual way. Parts of the peeled layer are also discharged into the fountain solution.

ITEH STANDARD PREVIEW
(standards.iteh.ai)

[SIST ISO 24487-1:2023](https://standards.iteh.ai/catalog/standards/sist/b0ebe714-205b-46a3-a61f-fc8bd19ccaf4/sist-iso-24487-1-2023)

<https://standards.iteh.ai/catalog/standards/sist/b0ebe714-205b-46a3-a61f-fc8bd19ccaf4/sist-iso-24487-1-2023>

Graphic technology — Processless lithographic plates —

Part 1: Evaluation methods for characteristics and performance

1 Scope

This document applies to processless lithographic plates and specifies evaluation methods for lithographic plate characteristics, on-press development performance, usability and print image quality.

It specifies measurement conditions for materials and equipment and provides guidelines for the selection of suitable processless lithographic plates by a printing organization and requirements for comparative assessment tests.

The assessment of waterless lithographic plates is out of scope of this document.

2 Normative references

The following documents are referred to in the text in such a way that some or all of their content constitutes requirements of this document. For dated references, only the edition cited applies. For undated references, the latest edition of the referenced document (including any amendments) applies.

ISO 2846-1, *Graphic technology — Colour and transparency of printing ink sets for four-colour printing — Part 1: Sheet-fed and heat-set web offset lithographic printing*

ISO 12647-2, *Graphic technology — Process control for the production of half-tone colour separations, proof and production prints — Part 2: Offset lithographic processes*

ISO 13655, *Graphic technology — Spectral measurement and colorimetric computation for graphic arts images*

3 Terms and definitions

For the purposes of this document, the following terms and definitions apply.

ISO and IEC maintain terminological databases for use in standardization at the following addresses:

- ISO Online browsing platform: available at <https://www.iso.org/obp>
- IEC Electropedia: available at <https://www.electropedia.org/>

3.1

processless plate

plate loaded directly on to a printing press following exposure without any intermediate processing step other than mechanical processes such as plate punching and bending

Note 1 to entry: Intermediate processing steps typically include plate development, cleaning, fixing (or desensitization) and other treatments

Note 2 to entry: Strictly speaking, these plates are 'processed' on press using the press fountain solution and ink.

3.2

pre-dampening amount

fountain solution amount used to wet plates prior to printing

ISO 24487-1:2021(E)

3.3

pre-inking amount

ink amount applied to plates prior to printing

4 Test procedure

4.1 General

Printing machines in use today differ in physical structure, fountain technology and ink delivery systems. The test conditions in this document are designed to be practical and to show significant differentiation between performance of different processless plate technologies.

Test conditions have been chosen to control key factors that have an impact on processless plates performance.

Two categories of testing are anticipated by this document.

- a) Individual test: testing by a printer who wishes to choose the most suitable plate for his purpose and for this category of test, the production methods and materials used for testing should be those used by the printer for print production.
- b) Comparative test: scientific testing to allow the performance of printing plates to be compared to one another and for this category, the testing requires the use of specified test materials and methods which in some cases may be specified by the press or plates manufacturer.

Unless explicitly indicated, requirements shall be applied to both testing categories.

4.2 Test environment

The temperature of the printing room shall be $24\text{ °C} \pm 2\text{ °C}$.

The relative humidity of the printing room shall be $(55 \pm 10)\%$ RH.

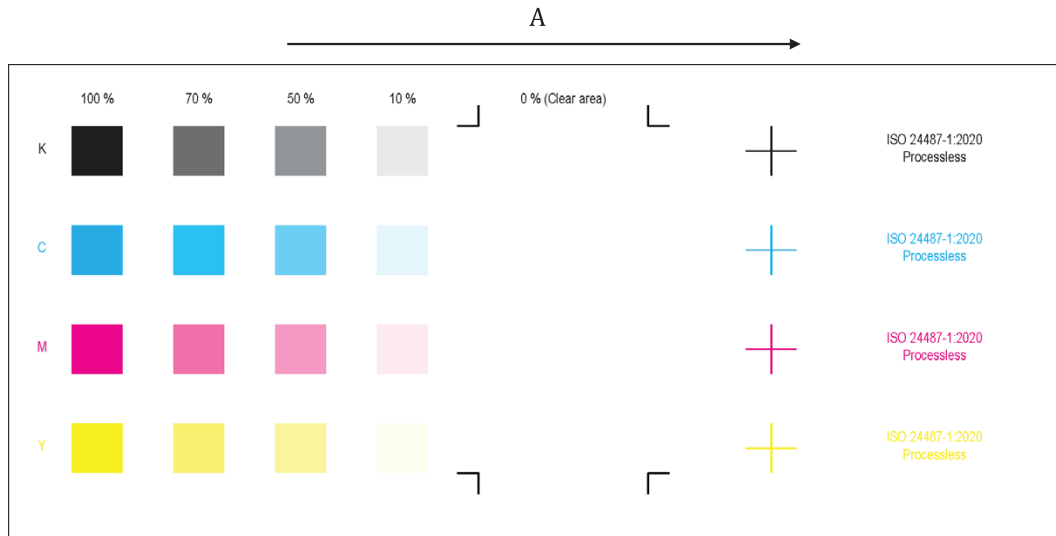
4.3 Plate imaging

Printing plates shall be prepared to include the following content. Additional inked content shall be added in such a way as to ensure approximately equal inking across the plate of between 20 % to 40 % coverage.

A CMYK test form with a set of rectangular or square patches shall be prepared comprising: a solid (100 %) patch in each process colour, and patches of intermediate tones from 10 % to 70 % tone value in each process colour. A region of at least 100 mm × 150 mm of the sheet shall be left blank (the non-image area).

Each patch should have a minimum size of 10 mm × 10 mm and patches should be spaced by a minimum of 5 mm. Where visual assessment is required, patches should have a minimum size of 40 mm × 40 mm. The plate image area shall have a large region of approximately half the total image size where no marks are imaged. An example test form is shown in [Figure 1](#).

NOTE 1 The minimum size for each patch has been specified so that the patches can be measured easily. The minimum spacing of patches is required to allow visual assessment of toning between printed elements.

**Key**

A preferred printing direction

Figure 1 — Example CMYK test form

The test form should be imaged in several positions and with different orientations. When oriented in the press direction, it shall be aligned with the preferred printing direction as indicated.

NOTE 2 Where a subset of the process inks is to be tested, not all plates need to be imaged. For example, to test the performance with cyan ink, only the cyan plate needs to be imaged.

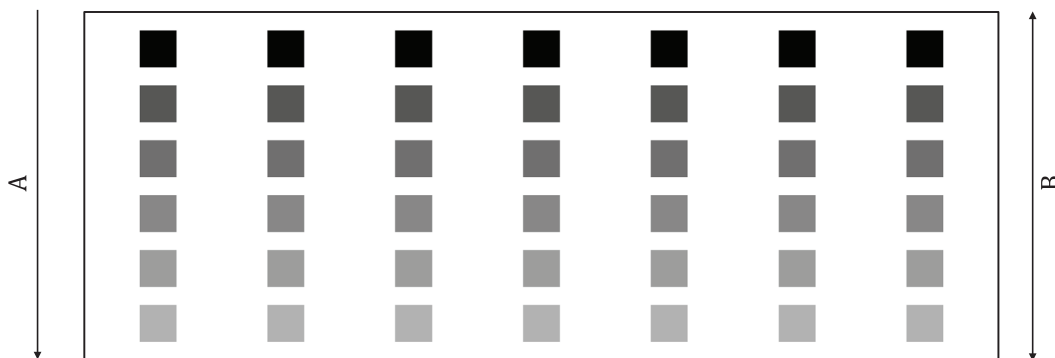
The plates shall be exposed as recommended by the manufacturer for optimum image sensitivity and should be adjusted to ensure that the halftone dot area on plate corresponds to patch tone value.

When printing is not 4-colour (CMYK), for example monochrome printing or printing of spot inks or varnish, a test chart comprising the set of process colours generally used in print production shall be used.

Where abrasion resistance tests are to be performed, a monochrome test form comprising seven sets of the patches shall be imaged. This test is generally performed on the black plate, but the same monochrome image may also be used to image the cyan, magenta or yellow plate. An example of a suitable test form is shown in [Figure 2](#). Sets of patches shall be separated sufficiently to allow abrasion resistance testing to be performed on one set without affecting any other set.

This test form may also be used when testing chemical resistance.

ISO 24487-1:2021(E)

**Key**

- A preferred printing direction
B abrasion direction

Figure 2 — Example abrasion resistance test form

When printing CMYK, all test forms shall be prepared and printed to meet the requirements of ISO 12647-2 with the exception of the tone value increase which should not be adjusted from the natural behaviour of the printing press. Additional content necessary for process control should be added as required. The reference paper type that is closest to the paper actually used for printing shall be identified and reported. When comparative testing is performed, a half-tone screen ruling of 60 cm^{-1} (approximately 150 lines per inch) should be used.

4.4 Pre-dampening amount

The pre-dampening amount should be as small as possible and shall be no greater than the recommended value from the press vendor.

4.5 Pre-inking amount

The pre-inking amount shall be set to the recommended value from the plate manufacturer or press vendor.

4.6 Ink selection

When individual testing is performed to determine whether the plate is suitable for a printing operation, the inks used for testing should be the same as are typically used for production.

When comparative testing is performed, inks conforming to ISO 2846-1 shall be used.

For the evaluation of resistance to toning, a low viscosity and low tack ink with a large content of varnish should be used.

Details of the inks used shall be reported.

NOTE Low viscosity and low tack inks show more differences when comparing processless plates.

4.7 Substrate selection

When individual testing is performed to determine whether the plate is suitable for a printing operation, the substrates used for testing should be the same as are typically used for production.

When comparative testing is performed, paper for the appropriate ISO 12647-2 printing condition shall be used. Where possible, an environmentally friendly paper such as recycled paper and FSC certified paper should be used.