



SLOVENSKI STANDARD
oSIST prEN 17160:2025
01-januar-2025

Pravila za kategorije proizvodov za keramične ploščice

Product category rules for ceramic tiles

Produktkategorieregeln für keramische Fliesen und Platten

Règles de définition des catégories de produits pour les carreaux céramiques

Ta slovenski standard je istoveten z: prEN 17160

ICS:

91.100.23 Keramične ploščice / Ceramic tiles

oSIST prEN 17160:2025

en,fr,de

EUROPEAN STANDARD
NORME EUROPÉENNE
EUROPÄISCHE NORM

DRAFT
prEN 17160

October 2024

ICS 91.100.23

Will supersede EN 17160:2019

English Version

Product category rules for ceramic tiles

Règles de définition des catégories de produits pour les
carreaux céramiques

Produktkategorieregeln für keramische Fliesen und
Platten

This draft European Standard is submitted to CEN members for enquiry. It has been drawn up by the Technical Committee CEN/TC 67.

If this draft becomes a European Standard, CEN members are bound to comply with the CEN/CENELEC Internal Regulations which stipulate the conditions for giving this European Standard the status of a national standard without any alteration.

This draft European Standard was established by CEN in three official versions (English, French, German). A version in any other language made by translation under the responsibility of a CEN member into its own language and notified to the CEN-CENELEC Management Centre has the same status as the official versions.

CEN members are the national standards bodies of Austria, Belgium, Bulgaria, Croatia, Cyprus, Czech Republic, Denmark, Estonia, Finland, France, Germany, Greece, Hungary, Iceland, Ireland, Italy, Latvia, Lithuania, Luxembourg, Malta, Netherlands, Norway, Poland, Portugal, Republic of North Macedonia, Romania, Serbia, Slovakia, Slovenia, Spain, Sweden, Switzerland, Türkiye and United Kingdom.

Recipients of this draft are invited to submit, with their comments, notification of any relevant patent rights of which they are aware and to provide supporting documentation.

Warning : This document is not a European Standard. It is distributed for review and comments. It is subject to change without notice and shall not be referred to as a European Standard.



EUROPEAN COMMITTEE FOR STANDARDIZATION
COMITÉ EUROPÉEN DE NORMALISATION
EUROPÄISCHES KOMITEE FÜR NORMUNG

CEN-CENELEC Management Centre: Rue de la Science 23, B-1040 Brussels

Contents	Page
European foreword	4
1 Scope	5
2 Normative references	5
3 Terms and definitions	5
4 Abbreviations	6
5 General aspects	6
5.1 Objective of the core PCR for ceramic tiles.....	6
5.2 Types of EPD with respect to life cycle stages covered	6
5.3 Comparability of EPD for construction products	6
5.4 Additional environmental information	7
5.5 Ownership, responsibility and liability for the EPD.....	7
6 Product Category Rules for LCA	7
6.1 Product category	7
6.2 Life cycle stages and their information modules to be included	7
6.3 Calculation rules for the LCA	7
6.3.1 Functional or declared unit.....	7
6.3.2 Functional unit.....	7
6.3.3 Declared unit.....	7
6.3.4 Reference service life (RSL)	7
6.3.5 System boundaries	8
6.3.6 Criteria for the exclusion of inputs and outputs.....	11
6.3.7 Selection of data	11
6.3.8 Data quality.....	12
6.3.9 Developing product level scenarios.....	12
6.3.10 Units.....	12
6.4 Inventory analysis	12
6.5 Impact assessment	12
7 Content of the EPD	13
7.1 Declaration of general information.....	13
7.2 Declaration of environmental parameters derived from LCA.....	13
7.2.1 General.....	13
7.2.2 Rules for declaring LCA information per module	13
7.2.3 Indicators describing environmental impacts based on Life Cycle Impact Assessment (LCIA)	13
7.2.4 Indicators describing resource use and environmental information based on Life Cycle Inventory (LCI)	14
7.2.5 Information on biogenic carbon content	14
7.3 Scenarios and additional technical information	14
7.3.1 General.....	14
7.3.2 Construction process stage	14
7.3.3 B1-B7 use stage.....	15
7.3.4 End-of-life	17
7.4 Additional information on release of dangerous substances to indoor air, soil and water during the use stage	17

7.4.1	Indoor air	17
7.4.2	Soil and water	17
7.5	Aggregation of information modules	17
8	Project report	17
9	Verification and validity of an EPD	17
	Bibliography	18

iTeh Standards
(<https://standards.iteh.ai>)
Document Preview

[oSIST prEN 17160:2025](https://standards.iteh.ai/catalog/standards/sist/3831f575-b9e5-43f8-b4d6-2fdc5a2193f5/osist-pren-17160-2025)

<https://standards.iteh.ai/catalog/standards/sist/3831f575-b9e5-43f8-b4d6-2fdc5a2193f5/osist-pren-17160-2025>

prEN 17160:2024 (E)**European foreword**

This document (prEN 17160:2024) has been prepared by Technical Committee CEN/TC 67 “Ceramic Tiles”, the secretariat of which is held by UNI.

This document is currently submitted to the CEN Enquiry.

This document will supersede EN 17160:2019.

EN 17160:2024 includes the following significant technical changes with respect to EN 17160:2019:

- update in relation to the latest revision of EN 15804:2012+A2:2019.

iTeh Standards
(<https://standards.iteh.ai>)
Document Preview

[oSIST prEN 17160:2025](https://standards.iteh.ai/catalog/standards/sist/3831f575-b9e5-43f8-b4d6-2fdc5a2193f5/osist-pren-17160-2025)

<https://standards.iteh.ai/catalog/standards/sist/3831f575-b9e5-43f8-b4d6-2fdc5a2193f5/osist-pren-17160-2025>

1 Scope

This document defines Product Category Rules (PCR) providing guidelines and rules for developing a type III environmental declaration (as in EN 15804:2012+A2:2019) for ceramic tiles produced by extrusion and dry-pressing techniques, mainly used for internal and/or external floorings and walls coverings, facade cladding and ceilings.

NOTE The assessment of social and economic performances at product level is not covered by this document.

The core PCR:

- define the indicators to be declared, information to be provided and the way in which they are collated and reported,
- describe which stages of ceramic tiles' life cycle are considered in the EPD and which processes are to be included in the life cycle stages;
- define rules for the development of scenarios;
- include the rules for calculating the Life Cycle Inventory and the Life Cycle Impact Assessment underlying the EPD, including the specification of the data quality to be applied;
- include the rules for reporting predetermined, environmental and health information, that is not covered by LCA for a ceramic tile, construction process and construction service where necessary;
- define the conditions under which ceramic tiles can be compared based on the information provided by EPD.

These PCR are intended to be used for cradle to grave and module D assessment.

After verification an EPD is valid for a 5-year period from the date of issue, after which it is reviewed and verified.

2 Normative references

The following documents are referred to in the text in such a way that some or all of their content constitutes requirements of this document. For dated references, only the edition cited applies. For undated references, the latest edition of the referenced document (including any amendments) applies

EN 14411:2016, *Ceramic tiles — Definition, classification, characteristics, assessment and verification of constancy of performance and marking*

EN 15804:2012+A2:2019,¹ *Sustainability of construction works — Environmental product declarations — Core rules for the product category of construction products*

3 Terms and definitions

For the purposes of this document, the terms and definitions given in EN 15804:2012+A2:2019 and the following apply:

3.1

ceramic tile

tile made from clays and/or other inorganic raw materials

[SOURCE: EN 14411:2016, 3.1]

¹ As impacted by EN 15804:2012+A2:2019/AC:2021.

prEN 17160:2024 (E)

3.2

mosaic

any piece that can fit into a square the side of which is up to 7 cm

3.3

tile panel/slab/surface

ceramic tile of size greater than or equal to 1 m²

4 Abbreviations

For the purpose of this document, the abbreviations given in EN 15804:2012+A2:2019 and the following apply.

BREF best available techniques reference document

EPBD Energy performance of buildings directive

5 General aspects

5.1 Objective of the core PCR for ceramic tiles

The objective is as in EN 15804:2012+A2:2019 and the Scope of this document.

5.2 Types of EPD with respect to life cycle stages covered

Types of EPD that may be provided are (see Figure 1):

- cradle to grave and module D (A, B, C and D). This declaration shall be based on functional unit or declared unit.

For an EPD type “Cradle to grave and Module D” all modules are mandatory as described in Figure 1.

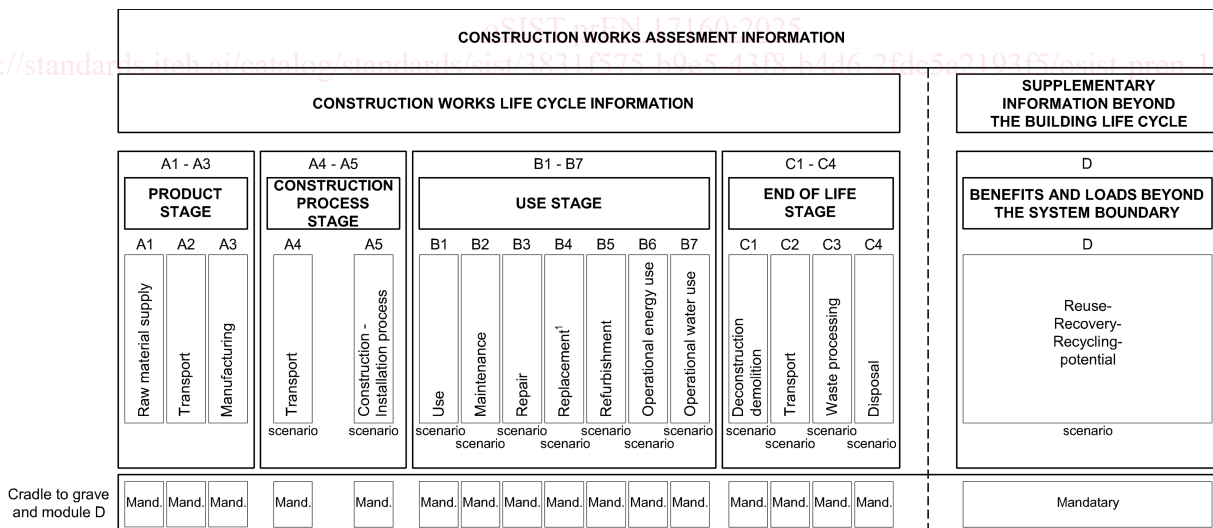


Figure 1 — Types of EPD with respect to life cycle stages covered and life cycle stages and modules for the building assessment (EN 15804:2012+A2:2019) Mand = Mandatory.

5.3 Comparability of EPD for construction products

For the purposes of this document, comparability of EPD for construction products given in EN 15804:2012+A2:2019 apply.

5.4 Additional environmental information

For the purposes of this document, additional environmental information given in EN 15804:2012+A2:2019 apply.

5.5 Ownership, responsibility and liability for the EPD

A manufacturer or a group of manufacturers are the sole owners and have liability and responsibility for an EPD.

6 Product Category Rules for LCA

6.1 Product category

The product category referred to in these PCR includes all ceramic tiles coverings for flooring and/or wall, facade cladding and ceilings, both indoor and outdoor, including mosaics, slabs, surfaces, panels, special and decorative pieces.

6.2 Life cycle stages and their information modules to be included

The life cycle stages shall be as in EN 15804:2012+A2:2019 and 5.2 of this document.

6.3 Calculation rules for the LCA

6.3.1 Functional or declared unit

The functional or declared unit shall be as in EN 15804:2012+A2:2019.

6.3.2 Functional unit

The functional unit shall be as in EN 15804:2012+A2:2019, in addition: the functional unit is defined as a 1 m² of ceramic tile with various functions, including flooring and/or cladding of walls, terraces and facades for a period of at least 50 years² (in accordance with 6.3.4 of this document).

The functional unit is characterized by performance characteristics under defined conditions (EN 14411:2016) and over the defined time period in accordance with 6.3.4 of this document.

A functional unit shall contain the characteristic weight referred to 1 m² (express as kg/m²) to allow materials characterized by different thicknesses to be compared consistently.

6.3.3 Declared unit

The declared unit shall be as in EN 15804:2012+A2:2019 and 5.2 of this document.

A declared unit shall contain the characteristic weight referred to 1m² (express as kg/m²) and expressed for a specified period of time (of at least 50 years³) under reference in-use conditions, considering the RSL in accordance with 6.3.4 of this document.

6.3.4 Reference service life (RSL)

The RSL shall be as in EN 15804:2012+A2:2019.

In addition, the RSL shall be at least 50 years. This statement is based on practical experience showing that RSL of ceramic tiles can be the same as the life time of the building⁴.

NOTE Longer RSL might be eligible in accordance with other regulation.

² EN 14411:2016 - Table ZA.1.1

³ EN 14411:2016 - Table ZA.1.1

⁴ EN 14411:2016 - Table ZA.1.1

prEN 17160:2024 (E)

6.3.5 System boundaries

6.3.5.1 General

System boundaries shall be as in EN 15804:2012+A2:2019.

Figure 2 illustrates a detailed example of a cradle-to-gate and module D ceramic tile process flow diagram.

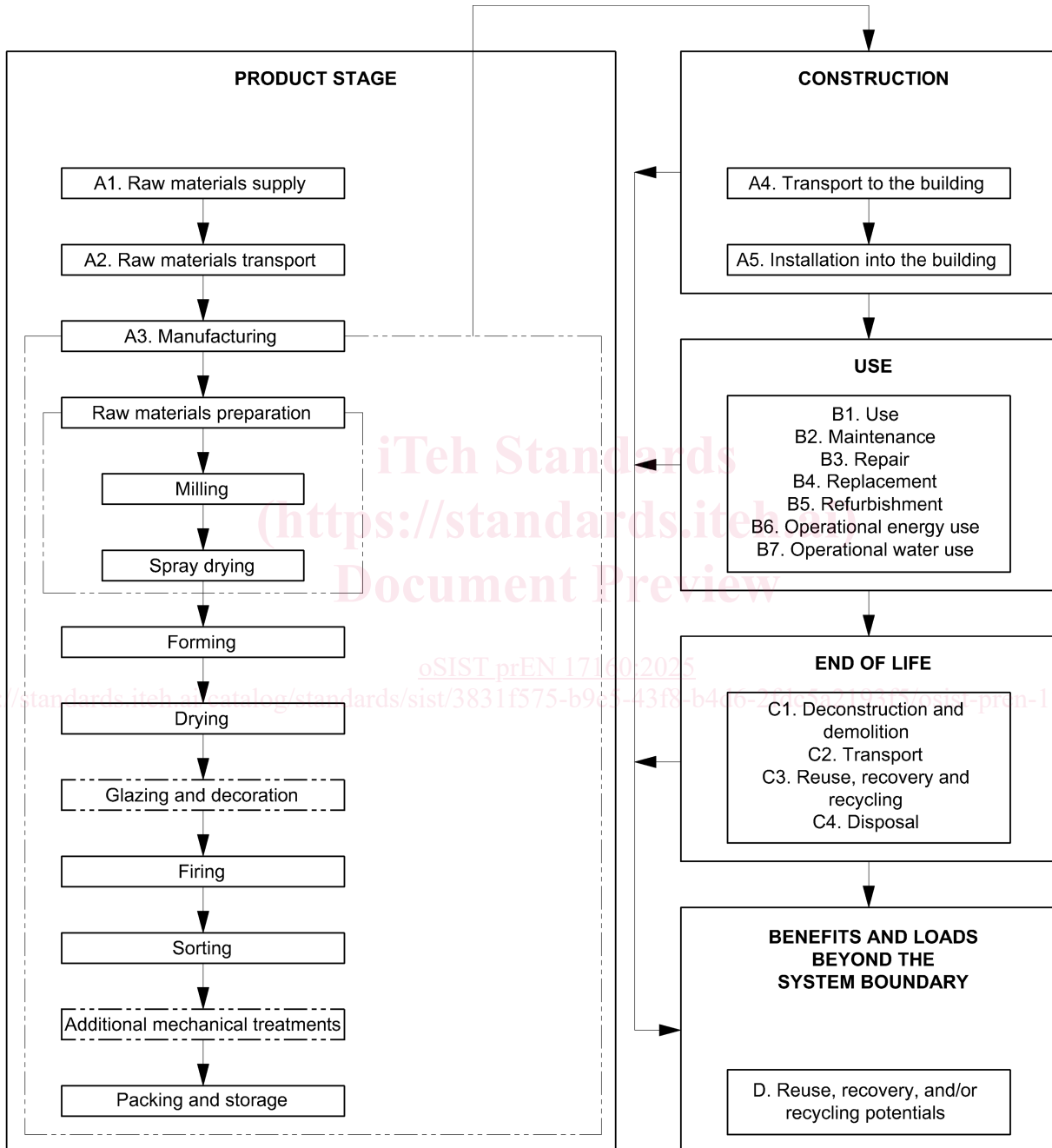


Figure 2—Example of a cradle-to-grave ceramic tile process flow diagram

6.3.5.2 Product stage

The product stage shall be as in EN 15804:2012+A2:2019.