
INTERNATIONAL STANDARD



2912

INTERNATIONAL ORGANIZATION FOR STANDARDIZATION • МЕЖДУНАРОДНАЯ ОРГАНИЗАЦИЯ ПО СТАНДАРТИЗАЦИИ • ORGANISATION INTERNATIONALE DE NORMALISATION

Modular units for machine tool construction — Multi-spindle heads — Casing and input drive shaft dimensions

First edition — 1973-12-01

iTeh STANDARD PREVIEW
(standards.iteh.ai)

[ISO 2912:1973](https://standards.iteh.ai/catalog/standards/sist/7d3fba41-2e33-4108-a48a-d91aff533e4/iso-2912-1973)

<https://standards.iteh.ai/catalog/standards/sist/7d3fba41-2e33-4108-a48a-d91aff533e4/iso-2912-1973>



UDC 621.9-112

Ref. No. ISO 2912-1973 (E)

Descriptors : machine tools, elements, modular structures, shafts (machine elements), multi-spindle heads, dimensions, interchangeability.

Price based on 3 pages

FOREWORD

ISO (the International Organization for Standardization) is a worldwide federation of national standards institutes (ISO Member Bodies). The work of developing International Standards is carried out through ISO Technical Committees. Every Member Body interested in a subject for which a Technical Committee has been set up has the right to be represented on that Committee. International organizations, governmental and non-governmental, in liaison with ISO, also take part in the work.

Draft International Standards adopted by the Technical Committees are circulated to the Member Bodies for approval before their acceptance as International Standards by the ISO Council.

International Standard ISO 2912 was drawn up by Technical Committee ISO/TC 39, *Machine tools*, and circulated to the Member Bodies in August 1972.

It has been approved by the Member Bodies of the following countries :

Austria	Hungary	Switzerland
Belgium	India	Thailand
Bulgaria	Ireland	Turkey
Czechoslovakia	New Zealand	U.S.A.
Egypt, Arab Rep. of	Romania	U.S.S.R.
France	South Africa, Rep. of	
Germany	Sweden	

The Member Bodies of the following countries expressed disapproval of the document on technical grounds :

Japan
United Kingdom

Modular units for machine tool construction – Multi-spindle heads – Casing and input drive shaft dimensions

1 SCOPE AND FIELD OF APPLICATION

This International Standard specifies a range of basic dimensions for multi-spindle head casings and also gives dimensions for the interchangeability of multi-spindle head input drive shafts with motor coupling.

2 REFERENCE

[ISO 2912:1973](#)

ISO 2562, *Modular units for machine tool construction – Slide units*.
<https://standards.iteh.ai/catalog/standards/sist/7d3fba41-2e33-4108-a48a-d91aff533e4/iso-2912-1973>

3 NOMINAL SIZES

The nominal size of multi-spindle heads is given by the nominal width of the saddle on the related slide unit (see ISO 2562). Nine nominal sizes are adopted, namely 125, 160, 200, 250, 320, 400, 500, 630 and 800 mm.

4 DIMENSIONS

4.1 The range of basic dimensions for multi-spindle head casings shall be in accordance with Table 1. Precise selections from this range may be made in national standards.

4.2 Input drive shaft dimensions shall be in accordance with Table 2.

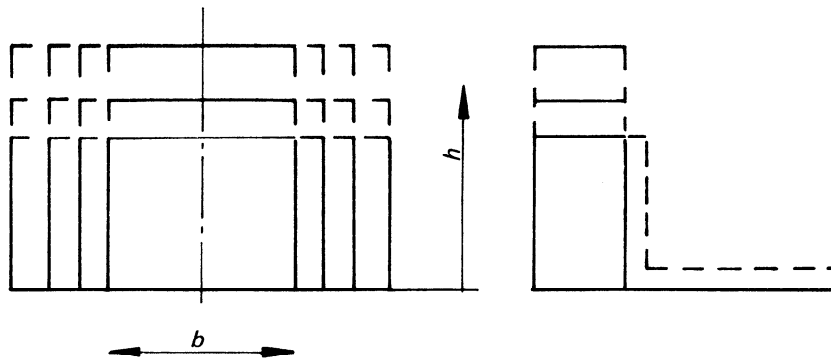


FIGURE 1 – Multi-spindle head casing

TABLE 1 – Dimensions of multi-spindle head casings

Dimensions in millimetres

Width of casing <i>b</i>	Nominal size								
	125	160	200	250	320	400	500	630	800
	Height of casing <i>h</i>								
160	125								
	160								
	200								
200	125	160							
	160	200							
	200	250							
250	125	160	200						
	160	200	250						
	200	250	320						
320	125	160	200	250					
	160	200	250	320					
	200	250	320	400					
400		160	200	250	320				
		200	250	320	400				
		250	320	400	500				
500			200	250	320	400			
			250	320	400	500			
			320	400	500	630			
630				250	320	400	500		
				320	400	500	630		
				400	500	630	800		
800					320	400	500	630	
					400	500	630	800	
					500	630	800	1 000	
1 000						400	500	630	800
						500	630	800	1 000
						630	800	1 000	1 250
1 250							500	630	800
							630	800	1 000
							800	1 000	1 250

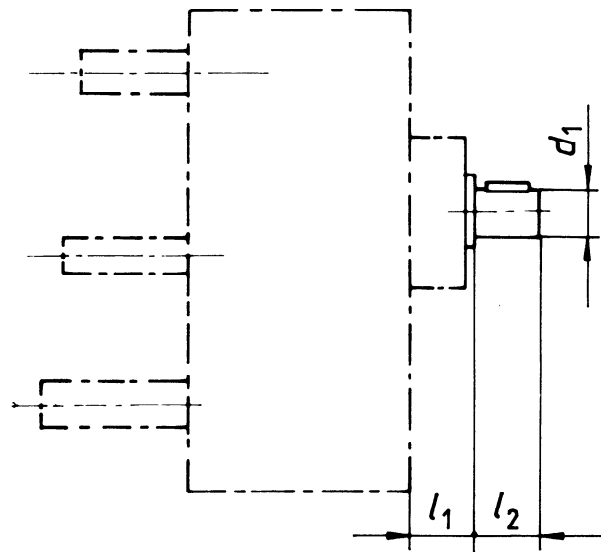


Figure 2 — Input drive shaft

Table 2 — Dimensions of input drive shaft

Dimensions in millimetres

d_1	tol.	l_1^*	l_2
28	j6	40	60
38	k6	50	70
42	k6	65	70
48	k6	80	85
60	m6	100	110

* Mounting dimension given for information only.

iTeh STANDARD PREVIEW
 (standards.iteh.ai)
 ISO 2912:1973
 https://standards.iteh.ai/catalog/standards/sist/7d5fba41-2e33-4108-a48a-d91a1633e4/iso-2912-8073

iTeh STANDARD PREVIEW
(standards.iteh.ai)

This page intentionally left blank

[ISO 2912:1973](#)

<https://standards.iteh.ai/catalog/standards/sist/7d3fba41-2e33-4108-a48a-d91aff533e4/iso-2912-1973>

iTeh STANDARD PREVIEW
(standards.iteh.ai)

This page intentionally left blank

[ISO 2912:1973](#)

<https://standards.iteh.ai/catalog/standards/sist/7d3fba41-2e33-4108-a48a-d91aff533e4/iso-2912-1973>

iTeh STANDARD PREVIEW
(standards.iteh.ai)

This page intentionally left blank

[ISO 2912:1973](#)

<https://standards.iteh.ai/catalog/standards/sist/7d3fba41-2e33-4108-a48a-d91aff533e4/iso-2912-1973>