





INTERNATIONAL  
STANDARD

ISO  
3548-1

Second edition  
2022-08

---

---

**Plain bearings — Thin-walled half  
bearings with or without flange —**

**Part 1:  
Tolerances, design features and  
methods of test**

*Paliers lisses — Demi-coussinets minces à ou sans collerette —  
Partie 1: Tolérances, caractéristiques de conception et méthodes  
d'essai*

[SIST ISO 3548-1:2023](https://standards.iteh.ai/catalog/standards/sist/9e14a8b6-965b-4e41-9efa-6b4d93f7ac1e/sist-iso-3548-1-2023)

<https://standards.iteh.ai/catalog/standards/sist/9e14a8b6-965b-4e41-9efa-6b4d93f7ac1e/sist-iso-3548-1-2023>



Reference number  
ISO 3548-1:2022(E)

© ISO 2022

# iTeh STANDARD PREVIEW (standards.iteh.ai)

SIST ISO 3548-1:2023

<https://standards.iteh.ai/catalog/standards/sist/9e14a8b6-965b-4e41-9efa-6b4d93f7ac1e/sist-iso-3548-1-2023>



## **COPYRIGHT PROTECTED DOCUMENT**

© ISO 2022

All rights reserved. Unless otherwise specified, or required in the context of its implementation, no part of this publication may be reproduced or utilized otherwise in any form or by any means, electronic or mechanical, including photocopying, or posting on the internet or an intranet, without prior written permission. Permission can be requested from either ISO at the address below or ISO's member body in the country of the requester.

ISO copyright office  
CP 401 • Ch. de Blandonnet 8  
CH-1214 Vernier, Geneva  
Phone: +41 22 749 01 11  
Email: [copyright@iso.org](mailto:copyright@iso.org)  
Website: [www.iso.org](http://www.iso.org)

Published in Switzerland

# Contents

Page

Foreword.....	iv
<b>1 Scope.....</b>	<b>1</b>
<b>2 Normative references.....</b>	<b>1</b>
<b>3 Terms and definitions.....</b>	<b>1</b>
<b>4 Symbols.....</b>	<b>1</b>
<b>5 Dimensions and tolerances.....</b>	<b>4</b>
5.1 Housing diameter, half bearing outside diameter and crush height.....	4
5.2 Half bearing wall thickness and bearing bore.....	4
5.3 Width of half bearing, distance between flanges, outside diameter of flange and flange thickness.....	6
5.4 Free spread.....	7
<b>6 Design features.....</b>	<b>10</b>
6.1 General.....	10
6.2 Locating nick and recess.....	10
6.3 Reliefs and chamfers.....	11
6.4 Transition between radial part and flange.....	12
6.5 Assembled flange scalloped toes.....	14
6.6 Oil grooves and holes.....	14
<b>7 Test data for determining the peripheral length.....</b>	<b>17</b>
7.1 Calculation of test force $F$ .....	17
7.2 Checking method A.....	18
7.3 Checking method B.....	19
<b>8 Test data for determining axial width, <math>B_2</math>, of flange bearings.....</b>	<b>19</b>
8.1 General.....	19
8.2 Go between two parallel plates.....	19
8.3 Axial width $B_2$ checked under force.....	20
<b>9 Function and characteristics of assembled flange bearings.....</b>	<b>20</b>
9.1 General.....	20
9.2 Characteristics.....	21
9.3 Classification.....	22
9.4 Checklist of items for ensuring the function of assembled flange bearings.....	22
<b>Bibliography.....</b>	<b>23</b>

## ISO 3548-1:2022(E)

## Foreword

ISO (the International Organization for Standardization) is a worldwide federation of national standards bodies (ISO member bodies). The work of preparing International Standards is normally carried out through ISO technical committees. Each member body interested in a subject for which a technical committee has been established has the right to be represented on that committee. International organizations, governmental and non-governmental, in liaison with ISO, also take part in the work. ISO collaborates closely with the International Electrotechnical Commission (IEC) on all matters of electrotechnical standardization.

The procedures used to develop this document and those intended for its further maintenance are described in the ISO/IEC Directives, Part 1. In particular, the different approval criteria needed for the different types of ISO documents should be noted. This document was drafted in accordance with the editorial rules of the ISO/IEC Directives, Part 2 (see [www.iso.org/directives](http://www.iso.org/directives)).

Attention is drawn to the possibility that some of the elements of this document may be the subject of patent rights. ISO shall not be held responsible for identifying any or all such patent rights. Details of any patent rights identified during the development of the document will be in the Introduction and/or on the ISO list of patent declarations received (see [www.iso.org/patents](http://www.iso.org/patents)).

Any trade name used in this document is information given for the convenience of users and does not constitute an endorsement.

For an explanation of the voluntary nature of standards, the meaning of ISO specific terms and expressions related to conformity assessment, as well as information about ISO's adherence to the World Trade Organization (WTO) principles in the Technical Barriers to Trade (TBT), see [www.iso.org/iso/foreword.html](http://www.iso.org/iso/foreword.html).

This document was prepared by Technical Committee ISO/TC 123, *Plain Bearings*, Subcommittee SC 3, *Dimensions, tolerances and constructions details*.

This second edition cancels and replaces the first edition (ISO 3548:2014), which has been technically revised.

The main changes are as follows:

- normative references have been revised in [Clause 2](#);
- symbols and terms with units have been added to [Table 1](#);
- symbols in [Figure 2](#) have been modified;
- symbols and measures in [Figure 7](#) have been modified;
- [Figures 3, 10](#) and [11](#) have been modified;
- symbols in [7.2](#) and [7.3](#) have been modified.

A list of all parts in the ISO 3548 series can be found on the ISO website.

Any feedback or questions on this document should be directed to the user's national standards body. A complete listing of these bodies can be found at [www.iso.org/members.html](http://www.iso.org/members.html).

# Plain bearings — Thin-walled half bearings with or without flange —

## Part 1: Tolerances, design features and methods of test

### 1 Scope

This document specifies tolerances, design features and test methods for thin-walled half bearings with integral flange up to an outside diameter of  $D_o = 250$  mm and without flange up to an outside diameter of  $D_o = 500$  mm. Due to the variety of design, it is, however, not possible to standardize the dimensions of the half bearings.

Half bearings according to this document are predominantly used in reciprocating machinery and consist of a steel backing and one or more bearing metal layers on the inside.

In reciprocating machinery, flanged half bearings can be used in connection with half bearings without flange.

Alternatively, to serve as a flanged half bearing, it is possible to use a half bearing without flange together with two separate half thrust washers according to ISO 6526, or a half bearing with assembled flanges.

NOTE All dimensions and tolerances are given in millimetres.

### 2 Normative references

The following documents are referred to in the text in such a way that some or all of their content constitutes requirements of this document. For dated references, only the edition cited applies. For undated references, the latest edition of the referenced document (including any amendments) applies.

ISO 3548-3, *Plain bearings — Thin-walled half bearings with or without flange — Part 3: Measurement of peripheral length*

ISO 6526, *Plain bearings — Pressed bimetallic half thrust washers — Features and tolerances*

ISO 21920-3, *Geometrical product specifications (GPS) — Surface texture: Profile — Part 3: Specification operators*

### 3 Terms and definitions

No terms and definitions are listed in this document.

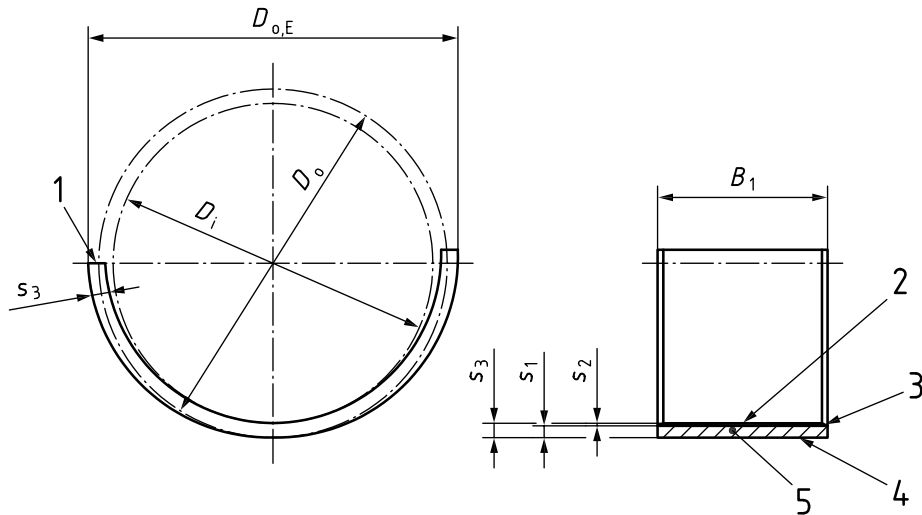
ISO and IEC maintain terminology databases for use in standardization at the following addresses:

- ISO Online browsing platform: available at <https://www.iso.org/obp>
- IEC Electropedia: available at <https://www.electropedia.org/>

### 4 Symbols

Symbols and units are shown in [Figures 1](#) and [2](#) and [Table 1](#).

## ISO 3548-1:2022(E)



## Key

- 1 joint face
- 2 sliding surface
- 3 bearing metal
- 4 bearing back
- 5 steel bearing backing

Figure 1 — Half bearing without flange with positive free spread

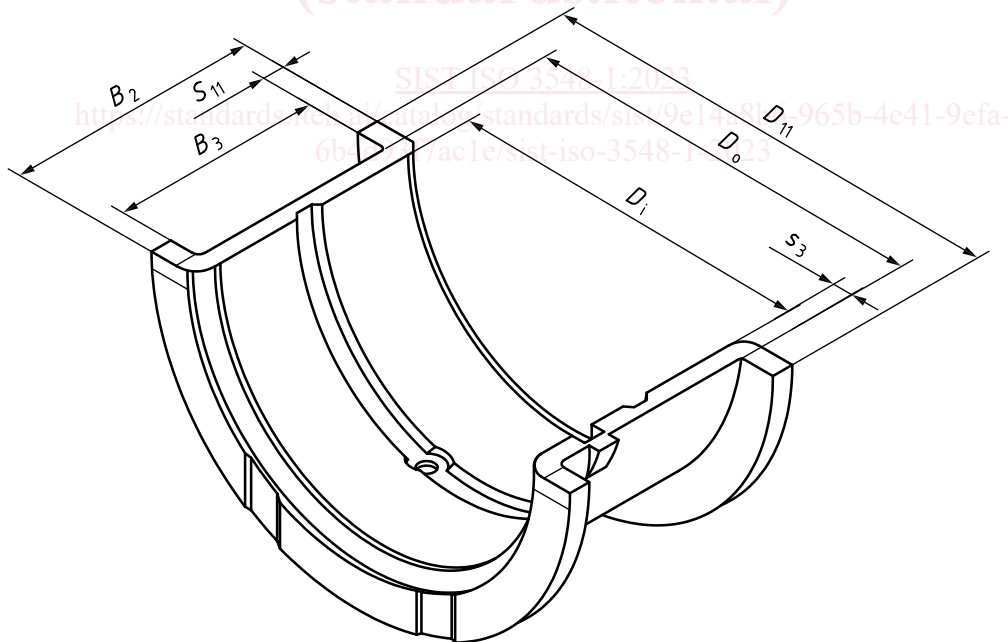


Figure 2 — Flange half bearing, integral or assembled, excluding free spread



Table 1 — Symbols and units

Symbol	Description	Unit
$a$	Crush height	mm
$a_A$	Crush height in checking method A	mm
$a_B$	Crush height in checking method B	mm
$a_{B1}$	Crush height on first joint face side in checking method B	mm
$a_{B2}$	Crush height on second joint face side in checking method B	mm
$a_1$	Measuring point perpendicular to plane of joint face	mm
$a_2$	Circumferential length of locating nick	mm
$a_4$	Locating nick protrusion	mm
$a_5$	Locating recess depth	mm
$a_6$	Bearing bore relief length	mm
$a_7$	Sliding relief length	mm
$a_8$	Sliding relief length under 10° inclination	mm
$a_9$	Bending transition length	mm
$a_{10}$	Undercut length	mm
$a_{11}$	Groove centre distance	mm
$A_{cal}$	Reduced area of cross section (calculated value) of half bearing	mm <sup>2</sup>
$A_f$	Face area of flange	mm <sup>2</sup>
$b_1$	Distance to locating nick	mm
$b_2$	Locating nick width	mm
$b_3$	Distance recess centre to locating nick	mm
$b_4$	Distance locating nick groove to lubrication hole	mm
$b_5$	Locating recess width	mm
$b_6$	Clearance	mm
$b_G$	Oil groove width	mm
$b_H$	Housing width	mm
$B_1$	Half bearing width (without flange)	mm
$B_2$	Flange half bearing width	mm
$B_3$	Distance between flanges	mm
$c_i$	Inside chamfer	mm
$c_o$	Outside chamfer	mm
$d_{cb}$	Diameter of the checking block bore	mm
$d_H$	Housing diameter	mm
$D_{11}$	Outside diameter of flange	mm
$D_i$	Nominal inside diameter of the half bearing (bearing bore)	mm
$D_o$	Nominal outside diameter of the half bearing	mm
$D_{o,E}$	Outside diameter of the half bearing in the free state (with free spread)	mm
$e_B$	Amount of eccentricity	mm
$F$	Test force	N
$F_{ax}$	Axial test force for assembled flange bearings	N
$i_1$	Bearing bore relief height	mm
$i_2$	Flange bearing, sliding relief length	mm
$i_3$	Flange bearing, sliding relief length under 10° inclination	mm
$L_{Bu}$	Bottom limit of $u$	—
$L_{Uu}$	Upper limit of $u$	—

Table 1 (continued)

Symbol	Description	Unit
$P$	Amount of free spread	mm
$Ra$	Arithmetic average surface roughness	$\mu\text{m}$
$s$	Wall thickness (general)	mm
$s_1$	Steel backing thickness	mm
$s_2$	Bearing metal thickness	mm
$s_3$	Half bearing wall thickness	mm
$s_{3, \text{act}}$	Actual value of $s_3$	—
$s_4$	Wall thickness at the base of the groove	mm
$s_5$	Contact width assembled flange with half bearing	mm
$s_6$	Assembled flange joint thickness	mm
$s_{11}$	Flange thickness	mm
$s_\alpha$	Wall thickness at different angle	mm
$s_{\alpha, \text{BL}}$	Bottom value of $s_\alpha$	—
$s_{\alpha, \text{UL}}$	Upper value of $s_\alpha$	—
$u$	Amount of wall thickness reduction for eccentric bearing	mm
$x$	Tolerance, position limit of oil groove and oil hole	mm
$x_1$	Centre of the bearing outside surface	—
$x_2$	Centre of the bearing bore	—
$\alpha$	Angle	$^\circ$
$\alpha_2$	Angle at eccentricity measuring point	$^\circ$
$\beta$	Chamfer angle of oil groove	$^\circ$

## 5 Dimensions and tolerances

### 5.1 Housing diameter, half bearing outside diameter and crush height

The housing diameter should be manufactured to limit deviations H6 as defined in ISO 286-2. The half bearing outside diameter shall be selected with such an oversize that an adequate interference fit is ensured in the housing diameter.

In the case of housings made from materials having a high coefficient of expansion or where other factors such as housing dimensional stability are involved, the housing size may depart from tolerance class H6 but shall always be produced in accordance with standard tolerance grade 6 values.

The half bearing in a free state is flexible so that its outside diameter cannot be measured directly. Instead of this, its peripheral length is determined by means of special checking fixtures. The peripheral length results from the periphery of the checking block bore and the crush height taking into account the reduction under a given checking load per joint face (see [Clause 6](#)). The calculation of the effective interference fit of the half bearings in the housing is provided in Reference [7].

The tolerances given in [Table 2](#) for the crush height apply to half bearings with machined joint faces. Different materials and housing design require different interference fits, therefore only tolerances are given in [Table 2](#).

### 5.2 Half bearing wall thickness and bearing bore

Nominal dimensions to be preferred for the wall thickness of the bearing are given in [Table 2](#) (the particulars of the wall thickness for each application cannot be specified in general). Therefore, only tolerances can be given for the wall thickness. These tolerances and the surface roughnesses of the

bearing back and the sliding surface of half bearings with or without electroplated antifriction layers are given in [Table 2](#).

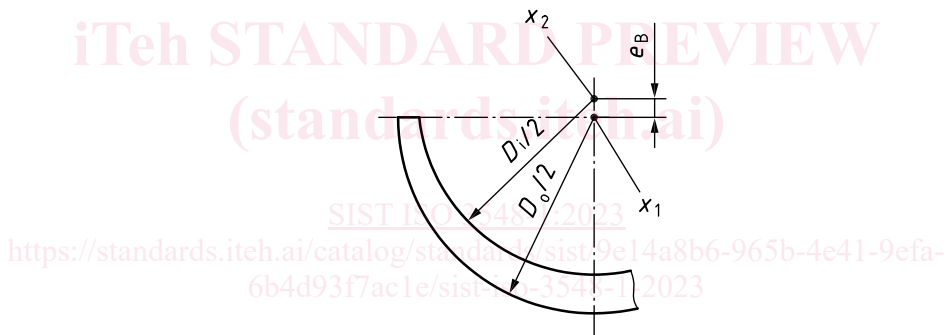
The tolerance for the half bearing wall thickness depends on the fact whether the bearing bore is subject to a final machining operation (i.e. “as machined”) or whether the bearing bore is electroplated without further machining (i.e. “as-plated”).

Slight surface deformations are acceptable on the outside diameter of the bearing provided that they are not numerous. However, the measurement of the wall thickness shall not be carried out in these areas.

The bearing bore in the fitted state results from the housing bore which is elastically enlarged by the press fit, reduced by twice the value of the half bearing wall thickness<sup>[Z]</sup>.

**NOTE** In certain applications, it can be necessary to use plain or flange half bearings with eccentric bores, i.e. the wall thickness of the half bearing decreases uniformly from the crown to the joint faces (see [Figures 3](#) and [4](#)).

The eccentricity  $e_B$  is characterized in a radial plane by the distance between the centre  $x_1$  of the bearing outside surface and the centre  $x_2$  of the bearing bore.  $e_B$  is not dimensioned specifically. The eccentricity is controlled by the specified reduction  $u$  which is measured at a vertical distance  $a_1$  from the plane of the joint face. For guidance of draughtsmen,  $a_1$  is generally specified so that the angle  $\alpha_2$  is approximately  $25^\circ$  from the joint face. The measuring point is subject to agreement between the user and manufacturer.



#### Key

- $x_1$  centre of the bearing outside surface
- $x_2$  centre of the bearing bore

**Figure 3 — Eccentric bearing bore of half bearing**