
**Plastics — Validation of force-time
curves obtained from high-speed
tensile tests**

*Plastiques — Validation des courbes force-temps obtenues à partir
d'essais de traction à grande vitesse*

iTeh STANDARD PREVIEW
(standards.iteh.ai)

ISO 22183:2023

<https://standards.iteh.ai/catalog/standards/sist/a76d391a-19f7-44b3-abca-d3e44baadac8/iso-22183-2023>



iTeh STANDARD PREVIEW
(standards.iteh.ai)

ISO 22183:2023

<https://standards.iteh.ai/catalog/standards/sist/a76d391a-19f7-44b3-abca-d3e44baadac8/iso-22183-2023>



COPYRIGHT PROTECTED DOCUMENT

© ISO 2023

All rights reserved. Unless otherwise specified, or required in the context of its implementation, no part of this publication may be reproduced or utilized otherwise in any form or by any means, electronic or mechanical, including photocopying, or posting on the internet or an intranet, without prior written permission. Permission can be requested from either ISO at the address below or ISO's member body in the country of the requester.

ISO copyright office
CP 401 • Ch. de Blandonnet 8
CH-1214 Vernier, Geneva
Phone: +41 22 749 01 11
Email: copyright@iso.org
Website: www.iso.org

Published in Switzerland

Contents

| | Page |
|--|-----------|
| Foreword..... | iv |
| Introduction..... | v |
| 1 Scope..... | 1 |
| 2 Normative references..... | 1 |
| 3 Terms and definitions..... | 1 |
| 4 Principle..... | 4 |
| 5 Measurement of the natural oscillation spectrum of the grip and force transducer configuration..... | 5 |
| 5.1 Measurement of natural oscillation frequencies..... | 5 |
| 5.1.1 Set-up of the high-speed tensile equipment..... | 5 |
| 5.1.2 Set-up of the striker..... | 5 |
| 5.1.3 Measurement procedure..... | 5 |
| 5.2 Determination of the natural oscillation spectrum..... | 6 |
| 6 Validation..... | 7 |
| 6.1 Minimum event time..... | 7 |
| 6.2 Maximum allowed intensity..... | 8 |
| 7 Test report..... | 9 |
| Annex A (informative) Configuration of the high-speed testing machine..... | 11 |
| Annex B (informative) Example for the measurement of natural oscillation frequencies..... | 15 |
| Annex C (informative) Influence of a set position on the natural oscillation spectrum..... | 18 |
| Annex D (informative) Relation between the nominal test speed and the nominal strain..... | 21 |
| Bibliography..... | 23 |

Foreword

ISO (the International Organization for Standardization) is a worldwide federation of national standards bodies (ISO member bodies). The work of preparing International Standards is normally carried out through ISO technical committees. Each member body interested in a subject for which a technical committee has been established has the right to be represented on that committee. International organizations, governmental and non-governmental, in liaison with ISO, also take part in the work. ISO collaborates closely with the International Electrotechnical Commission (IEC) on all matters of electrotechnical standardization.

The procedures used to develop this document and those intended for its further maintenance are described in the ISO/IEC Directives, Part 1. In particular, the different approval criteria needed for the different types of ISO document should be noted. This document was drafted in accordance with the editorial rules of the ISO/IEC Directives, Part 2 (see www.iso.org/directives).

ISO draws attention to the possibility that the implementation of this document may involve the use of (a) patent(s). ISO takes no position concerning the evidence, validity or applicability of any claimed patent rights in respect thereof. As of the date of publication of this document, ISO had received notice of (a) patent(s) which may be required to implement this document. However, implementers are cautioned that this may not represent the latest information, which may be obtained from the patent database available at www.iso.org/patents. ISO shall not be held responsible for identifying any or all such patent rights.

Any trade name used in this document is information given for the convenience of users and does not constitute an endorsement.

For an explanation of the voluntary nature of standards, the meaning of ISO specific terms and expressions related to conformity assessment, as well as information about ISO's adherence to the World Trade Organization (WTO) principles in the Technical Barriers to Trade (TBT), see www.iso.org/iso/foreword.html.

This document was prepared by Technical Committee ISO/TC 61, *Plastics*, Subcommittee SC 2, *Mechanical properties*.

Any feedback or questions on this document should be directed to the user's national standards body. A complete listing of these bodies can be found at www.iso.org/members.html.

Introduction

The method described in this document provides criteria for the validation of measurement curves obtained from high-speed tensile tests.

Force, time, travel and strain measurement systems of high-speed tensile equipment are usually calibrated in static mode. Dynamic effects, occurring at such tests, need to be addressed and limits or ranges of use for the obtained assessment parameters need to be set in order to allow the validation of the obtained measurement curves.

This document contains a method to measure the spectrum of the natural mechanical frequencies of the force transducer and grip arrangement, considering that these frequencies are the most important limiting factor for the range of use of a high-speed tensile test equipment.

In addition, there are further parameters which may play a role for the dynamic quality of the measurement curves, such as the data acquisition frequency, or oscillations generated in the machine frame. These parameters should be carefully supervised, and measures need to be taken if such problems occur in a significant way.

In case direct travel or strain measurement is used to generate stress-strain curves or to determine nominal or local strain rates, further parameters, such as the synchronization between force, time and strain channels, need to be supervised.

iTeh STANDARD PREVIEW
(standards.iteh.ai)

ISO 22183:2023

<https://standards.iteh.ai/catalog/standards/sist/a76d391a-19f7-44b3-abca-d3e44baadac8/iso-22183-2023>

Plastics — Validation of force-time curves obtained from high-speed tensile tests

1 Scope

This document specifies procedures for validation of high-speed tensile test data. It specifies a method to determine the spectrum of the natural oscillation frequencies of the force transducer and grip configuration of the high-speed tensile test equipment.

The lowest significant frequency is used for the validation. This validation procedure only applies to force measurement systems used in high-speed tensile testing machines showing a level of resonance influence that could be critical to the obtained result. Once the relevant frequencies of the system and the anticipated strain for the given material are known, this method allows to calculate the theoretical maximum allowed test speed too.

2 Normative references

There are no normative references in this document.

3 Terms and definitions

For the purposes of this document, the following terms and definitions apply.

ISO and IEC maintain terminological databases for use in standardization at the following addresses:

- ISO Online browsing platform: available at <https://www.iso.org/obp>
- IEC Electropedia: available at <https://www.electropedia.org/>

3.1

unloaded region

time domain prior to the application of the load by the striker

Note 1 to entry: See [Figure 1](#).

3.2

striking peak

first force peak generated by the striker hitting the grip

Note 1 to entry: See [Figure 1](#).

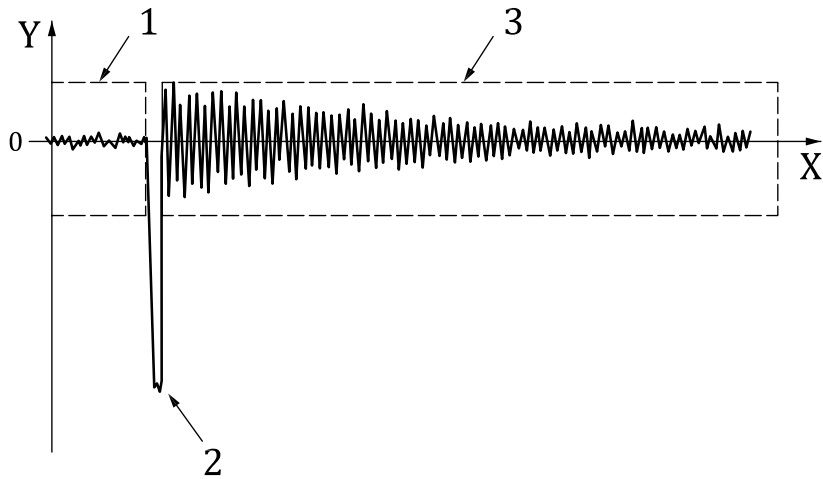
3.3

residual oscillations region

oscillations triggered by the striker

Note 1 to entry: It represents the force on the time domain after the strike of the striker.

Note 2 to entry: See [Figure 1](#).



Key

- X time (ms)
- Y force (N)
- 1 unloaded region
- 2 striking peak
- 3 residual oscillations region

Figure 1 — Typical force-time signal during the impact test

3.4 maximum force within the residual oscillations

$F_{r,max}$

maximum force – intended as absolute value – present in the residual oscillations, excluding the striking peak

Note 1 to entry: It is expressed in Newtons (N).

3.5 maximum force in the unloaded state

$F_{u,max}$

maximum absolute force value in the unloaded region

Note 1 to entry: It is expressed in Newtons (N).

3.6 natural oscillation spectrum

frequency spectrum obtained as a result of a Fast Fourier Transform Analysis of the residual oscillations region, normalized to the largest amplitude present

3.7 frequency

f

frequency of a relevant peak in the natural frequency spectrum

Note 1 to entry: It is expressed in kilohertz (kHz).

3.8 normalized intensity of the frequency

I

normalized intensity of frequency peak in the natural oscillation spectrum

3.9 lowest relevant frequency

 f_{low}

frequency of the first relevant peak in the natural oscillation spectrum

Note 1 to entry: It is expressed in kilohertz (kHz).

3.10 event time

 t_e

time from the start point of the force-time curve without unloaded region to the point of the relevant event to be measured

Note 1 to entry: The relevant event is either the yield point, or the break point or any other defined point.

Note 2 to entry: It is expressed in milliseconds (ms).

3.11 threshold number of waves in the event

 $w_{N,\text{th}}$

minimum number of waves of the relevant lowest frequency within the event time

3.12 gripping distance

 L

initial length of the part of the specimen between the grips

Note 1 to entry: It is expressed in millimetres (mm).

Note 2 to entry: See [Annex A](#).

3.13 grip displacement

 ΔL

displacement of the grip pulled to tensile direction of specimens from the beginning of the test

Note 1 to entry: It is expressed in millimetres (mm).

Note 2 to entry: Most of the loading mechanics of the high-speed tensile test device have the one side pulled and the other end fixed, as shown in [Annex A](#).

3.14 nominal strain

 ε_t

grip displacement divided by the initial gripping distance

Note 1 to entry: It is expressed as a dimensionless ratio, or as a percentage (%).

3.15 nominal test speed

 v

rate of separation of the gripping jaws

Note 1 to entry: It is expressed in metres per second (m/s).

3.16 maximum force

 F_{max}

maximum force observed in the whole force-time curve during the high-speed tensile test

Note 1 to entry: See [Figure 2](#).

Note 2 to entry: It is expressed in Newtons (N).

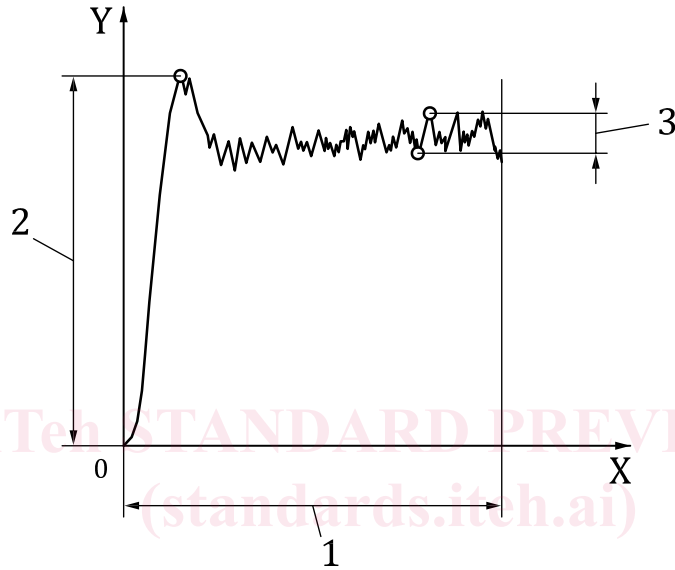
3.17 maximum amplitude of oscillations

$$\Delta F_{a,max}$$

largest peak-to-peak amplitude of oscillations, observed over a small portion of the curve during the high-speed tensile test, ignoring single spikes of electronic noise

Note 1 to entry: See [Figure 2](#).

Note 2 to entry: It is expressed in Newtons (N).



Key

| | | |
|---|--------------------|---------------------------------------|
| X | time (ms) | |
| Y | force (N) | |
| 1 | t_e | event time (ms) |
| 2 | F_{max} | maximum force (N) |
| 3 | $\Delta F_{a,max}$ | maximum amplitude of oscillations (N) |

Figure 2 — Typical force-time curve during tensile test at high speed

4 Principle

The principle of this document is based on the following two acceptance criteria:

- 1) The measurement of the natural oscillations of grip and force transducer configuration (see [6.1](#))

The natural oscillation frequencies of the force transducer and grip arrangement in the testing instrument are measured after a defined impact. These frequencies are analysed by means of a Fast Fourier Transform (FFT) and presented by their intensity over the relevant frequency range. The highest intensity observed is used to calculate a normalized intensity. The lowest frequency of a relevant normalized intensity will be used to establish the validation criterion.

- 2) The maximum allowed intensity (see [6.2](#))

The intensity of oscillations superimposed on the force - time curve is calculated by the ratio between the oscillation amplitude and the maximum force observed during the test.

5 Measurement of the natural oscillation spectrum of the grip and force transducer configuration

5.1 Measurement of natural oscillation frequencies

5.1.1 Set-up of the high-speed tensile equipment

The force transducer and the grip shall be well tightened and installed according to the equipment manufacturer's advice. If the jaw faces of the grips cannot be tightened without clamping a test specimen, as it may be the case when using wedge-type grips, use a small part of a rigid test specimen to ensure the jaw faces to be in a fixed and tightened situation.

5.1.2 Set-up of the striker

Use the striker capable of creating a defined single centric impact to the grip in the direction of the machine axis. It is recommended to use a tool that allows variation of the impact intensity and to adjust the striking position.

NOTE 1 A typical device of the striker and its striking position is shown in [Annex B](#).

The mass and the impact speed of the striker shall be such to ensure that the maximum force within the residual oscillations $F_{r,max}$ is higher than 10 % of the full-scale value of the selected force measurement range and greater than 200 N.

NOTE 2 Preliminary tests to achieve these conditions are detailed in [5.1.3](#).

The impact force shall not exceed the capacity of the force transducer.

The direction of stroke shall coincide with the machine axis and be centric to it to within ± 5 mm.

If it is not possible to create a centric impact due to the design of the grip, perform the impact at the closest possible position providing the least lateral oscillations and report the striking position with the results.

NOTE 3 Influence of the striking position on the natural oscillation spectrum is shown in [Annex C](#).

5.1.3 Measurement procedure

Carry out preliminary impacts to adjust the impact speed of the striker in a way to ensure that the maximum force within the residual oscillations $F_{r,max}$:

- is higher than 10 % of the full-scale value of the selected force measurement range;
- is at least 200 N;
- is at least 3 times higher than the maximum force in the unloaded state $F_{u,max}$.

Adjust the zero-point of the force measurement system.

Adjust the sampling rate in such way to be at least twice the natural oscillation frequency to be analysed. A minimum sampling rate of 100 kHz is recommended.

Select the suitable range of the amplifier.

Measure the force resulting from the natural frequency oscillation over a time between 5 ms and 12 ms, in order to have enough measurement points for the FFT evaluation.

Perform three measurement strikes in accordance with the defined conditions and record the force-time data in the unloaded state and after the impact for each impact.

Note the amplifier range, the cut-off frequency and the data acquisition frequency being used.

Determine $F_{r,max}$ and $F_{u,max}$, and ensure that the required relationship is achieved.

5.2 Determination of the natural oscillation spectrum

Use FFT to acquire the amplitude spectrum from the force-time curve acquired from the impact test.

Determine the length of the time-window to be used in the calculations of FFT.

In the case of acquiring the amplitude spectrum, data from 1,5 cycles after the force peak during impact test shall be used.

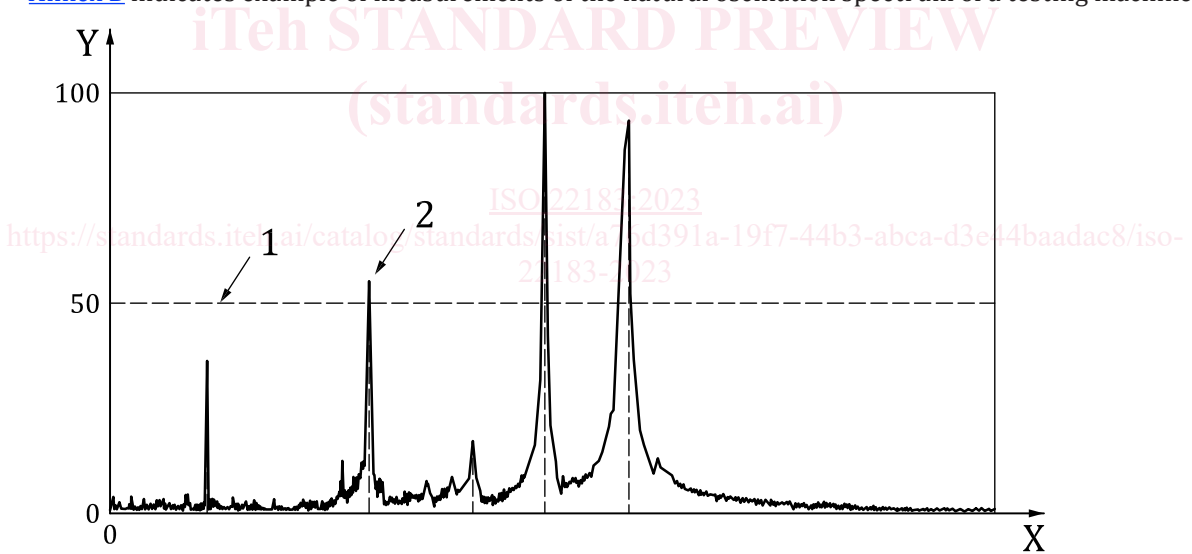
Select the appropriate window function and record the window function used.

Compare the frequency spectra obtained from the three measurements and check if the peaks occur at about the same frequencies and with similar intensities. If not, check for any loose parts and for the correct introduction of the impact strike and repeat the measurement.

The natural oscillation spectrum shall be plotted as the normalized intensity of the amplitude spectrum as a function of the frequency (see Figure 3). The spectrum to be reported is an average value, obtained from the spectrum results of each impact test.

Select the lowest frequency in the natural oscillation spectrum showing a normalized intensity of 50 % or more. This is the lowest relevant frequency f_{low} which is to be used for the validation (see Figure 3).

NOTE Annex B indicates example of measurements of the natural oscillation spectrum of a testing machine.



- Key**
- X frequency (kHz)
 - Y normalized intensity (%)
 - 1 normalized intensity of 50 %
 - 2 lowest relevant frequency (f_{low}), expressed in kilohertz (kHz)

Figure 3 — Typical natural oscillation spectrum of the impact test