
**Thermal insulation of building
elements — In-situ measurement
of thermal resistance and thermal
transmittance —**

**Part 3:
Probe insertion method**

*Isolation thermique des éléments de construction — Mesurage in
situ de la résistance thermique et du coefficient de transmission
thermique —*

Partie 3: Méthode par insertion d'une sonde

[ISO 9869-3:2023](https://standards.iteh.ai/catalog/standards/sist/a8993838-9a11-4fcd-9b53-4cb1d5969e14/iso-9869-3-2023)

<https://standards.iteh.ai/catalog/standards/sist/a8993838-9a11-4fcd-9b53-4cb1d5969e14/iso-9869-3-2023>



iTeh Standards
(<https://standards.iteh.ai>)
Document Preview

[ISO 9869-3:2023](https://standards.iteh.ai/catalog/standards/sist/a8993838-9a11-4fcd-9b53-4cb1d5969e14/iso-9869-3-2023)

<https://standards.iteh.ai/catalog/standards/sist/a8993838-9a11-4fcd-9b53-4cb1d5969e14/iso-9869-3-2023>



COPYRIGHT PROTECTED DOCUMENT

© ISO 2023

All rights reserved. Unless otherwise specified, or required in the context of its implementation, no part of this publication may be reproduced or utilized otherwise in any form or by any means, electronic or mechanical, including photocopying, or posting on the internet or an intranet, without prior written permission. Permission can be requested from either ISO at the address below or ISO's member body in the country of the requester.

ISO copyright office
CP 401 • Ch. de Blandonnet 8
CH-1214 Vernier, Geneva
Phone: +41 22 749 01 11
Email: copyright@iso.org
Website: www.iso.org

Published in Switzerland

Contents

Page

Foreword	iv
Introduction	v
1 Scope	1
2 Normative references	1
3 Terms and definitions	1
4 Symbols and units	2
5 Principle	2
5.1 General.....	2
5.2 Method without heat flow measurement.....	2
5.3 Method with heat flow measurement.....	2
6 Apparatus	3
6.1 Temperature measuring devices.....	3
6.1.1 Type of sensors and accuracy.....	3
6.1.2 Sensor for measuring temperature distribution in walls.....	3
6.1.3 Sensors for measuring surface and air temperatures.....	4
6.2 Borescope.....	4
6.3 Heat flow meter (HFM).....	5
7 Locations of the measured area and sensor installation	5
8 Measurement conditions and period	7
8.1 General.....	7
8.2 Method without heat flow measurement.....	7
8.3 Method with heat flow measurement.....	7
9 Measurement procedure	7
9.1 General.....	7
9.2 Method without heat flow measurement.....	7
9.3 Method with heat flow measurement.....	8
10 Calculations	9
10.1 Thickness of wall components.....	9
10.2 Temperature distribution.....	9
10.3 Thermal resistance.....	9
11 Test report	10
Annex A (normative) Evaluation of the effect of thermal bridges on the sensor for measuring the temperature distribution in the wall	12
Annex B (informative) Uncertainty analysis	18
Bibliography	21

Foreword

ISO (the International Organization for Standardization) is a worldwide federation of national standards bodies (ISO member bodies). The work of preparing International Standards is normally carried out through ISO technical committees. Each member body interested in a subject for which a technical committee has been established has the right to be represented on that committee. International organizations, governmental and non-governmental, in liaison with ISO, also take part in the work. ISO collaborates closely with the International Electrotechnical Commission (IEC) on all matters of electrotechnical standardization.

The procedures used to develop this document and those intended for its further maintenance are described in the ISO/IEC Directives, Part 1. In particular, the different approval criteria needed for the different types of ISO documents should be noted. This document was drafted in accordance with the editorial rules of the ISO/IEC Directives, Part 2 (see www.iso.org/directives).

ISO draws attention to the possibility that the implementation of this document may involve the use of (a) patent(s). ISO takes no position concerning the evidence, validity or applicability of any claimed patent rights in respect thereof. As of the date of publication of this document, ISO had not received notice of (a) patent(s) which may be required to implement this document. However, implementers are cautioned that this may not represent the latest information, which may be obtained from the patent database available at www.iso.org/patents. ISO shall not be held responsible for identifying any or all such patent rights.

Any trade name used in this document is information given for the convenience of users and does not constitute an endorsement.

For an explanation of the voluntary nature of standards, the meaning of ISO specific terms and expressions related to conformity assessment, as well as information about ISO's adherence to the World Trade Organization (WTO) principles in the Technical Barriers to Trade (TBT), see www.iso.org/iso/foreword.html.

This document was prepared by Technical Committee ISO/TC 163, *Thermal performance and energy use in the built environment*, Subcommittee SC 1, *Test and measurement methods*.

A list of all parts in the ISO 9869 series can be found on the ISO website.

Any feedback or questions on this document should be directed to the user's national standards body. A complete listing of these bodies can be found at www.iso.org/members.html.

Introduction

The ISO 9869 series describes the in-situ measurement of the thermal transmission properties of plane building components, primarily consisting of opaque layers perpendicular to the heat flow and having no significant lateral heat flow. The thermal transmittance of a building element (U-value) is defined in ISO 7345 as the heat flux per unit area and unit temperature difference in the steady state condition. Since steady state conditions are never encountered on a site in practice, such a simple measurement is not possible. Although various statistical methods have been introduced to address this problem, one of the simplest is the use of the mean values over a sufficiently long period of time. The required time for observation for reliable measurements depends on the thermal properties of the building components and the nature of the temperature difference between the surroundings on each of the sides thereof.

ISO 9869-1 describes the method used to estimate the thermal steady state properties of a building element from heat flow meter (HFM) measurements through plane building components. [Annex B](#) describes the statistical methods of the simple mean and the sophisticated method of dynamic analysis for steady state properties. This document describes a screening test of the insulation condition and thermal resistance of existing building elements by visual observation with a borescope and by measurement of the temperature gradient and heat flow with a temperature sensing rod and HFM. Although the method used in this document is not a non-destructive inspection method, the diameter of the borehole drilled through the building element is approximately less than 2 mm. The method described in this document is intended for use as a practical diagnostic procedure of the thermal transmission properties of plane building components with light heat capacity such as those in frame structure dwelling.

The thermal performance of a part of the building element is evaluated by obtaining the temperature gradient through the building element and the heat flow rate. The thermal transmittance (thermal resistance) of the insulation layer of the building components for the steady state condition can be obtained by using the averages of the observed values over a certain period of time.

[ISO 9869-3:2023](#)

<https://standards.iteh.ai/catalog/standards/sist/a8993838-9a11-4fcd-9b53-4cb1d5969e14/iso-9869-3-2023>

Thermal insulation of building elements — In-situ measurement of thermal resistance and thermal transmittance —

Part 3: Probe insertion method

1 Scope

This document describes a method for measuring the insulation performance of building elements, e.g. exterior walls, floors, ceilings (hereinafter referred to collectively as "walls"). This is done by using the probe insertion method, which gives the temperature distribution in the wall with a temperature sensor in a small diameter borehole in the wall.

The measurement method is divided into a quantitative method, which measures the thermal resistance with a heat flow measurement, and a qualitative method without heat flow measurement.

This document describes a screening test that is used for preliminary and practical diagnosis.

The method is applicable to plane building components with a light heat capacity, such as those in frame structure dwellings. The measured results give the insulation performance at the local measurement points rather than that of the whole panel including thermal bridges such as studs.

2 Normative references

The following documents are referred to in the text in such a way that some or all of their content constitutes requirements of this document. For dated references, only the edition cited applies. For undated references, the latest edition of the referenced document (including any amendments) applies.

ISO 7345, *Thermal performance of buildings and building components — Physical quantities and definitions*

ISO 9869-1, *Thermal insulation — Building elements — In-situ measurement of thermal resistance and thermal transmittance — Part 1: Heat flow meter method*

IEC 60584-1, *Thermocouples-Part 1: EMF specifications and tolerances*

3 Terms and definitions

For the purposes of this document, the terms and definitions given in ISO 7345 and the following apply.

ISO and IEC maintain terminology databases for use in standardization at the following addresses:

- ISO Online browsing platform: available at <https://www.iso.org/obp>
- IEC Electropedia: available at <https://www.electropedia.org/>

3.1

borescope

optical device consisting of a rigid or flexible tube with an eyepiece on one end and an objective lens on the other end, linked together by a relay optical system in between, which is surrounded by optical fibres used for illumination of the remote object

Note 1 to entry: Rigid or flexible borescopes may be fitted with an imaging or video device.

4 Symbols and units

Table 1 — Symbols and units

Symbol	Quantity	Units
k	thermal conductivity	W/(mK)
x	depth from the inner surface of the building element	m
L	thickness of the insulation layer	m
θ	temperature	°C
Q	heat flow rate	W/m ²
R	thermal resistance	(m ² K)/W

5 Principle

5.1 General

One of the two following methods shall be applied.

5.2 Method without heat flow measurement

A borehole with an approximately 1 mm diameter is drilled through the interior solid lining material (e.g. Gypsum board). A borescope is inserted and the presence or absence of an insulation layer is confirmed and the type and thickness of the insulation layer can also be observed. After visual inspection, a rod-shaped temperature sensor is inserted, which measures the temperature distribution along the depth of the borehole. The internal and external surface temperatures of the wall are also measured. Based on these measurements, an illustration of the cross-sectional temperature distribution at that location across the wall is made. Although the section temperature distribution obtained in the borehole is not an exact representation of the temperature distribution of the insulation layer, the two-side temperature of the insulation layer can be measured with a certain degree of accuracy. The degree of accuracy depends on the conductance of the rod-shaped temperature sensor, the insulation layer and any other relevant parts. The obtained temperature distribution shall be used as a basis for determining the quality of the insulation layer as follows:

- a) The thermal performance of the insulation material is evaluated from the ratio of the two-side temperature difference of the insulation layer and that of the internal and external temperatures of the wall (the observed building element).
- b) The temperature distribution curve prepared based on the measurement results is compared with the expected section temperature distribution assuming that the insulation material is functioning properly. The discrepancy between the two temperature distribution curves provides diagnostic criteria for determining whether, for example, the insulation layer is properly installed or not, or whether the insulation layer has already experienced aging degradation or not.

5.3 Method with heat flow measurement

In addition to the method described in [5.2](#), the heat flow is measured at the indoor side surface of the wall (building element). The thermal resistance of the insulation layer of the wall or the whole wall is obtained as the quotient of the two-side temperature difference of the measured insulation layer divided by the heat flow rate.

6 Apparatus

6.1 Temperature measuring devices

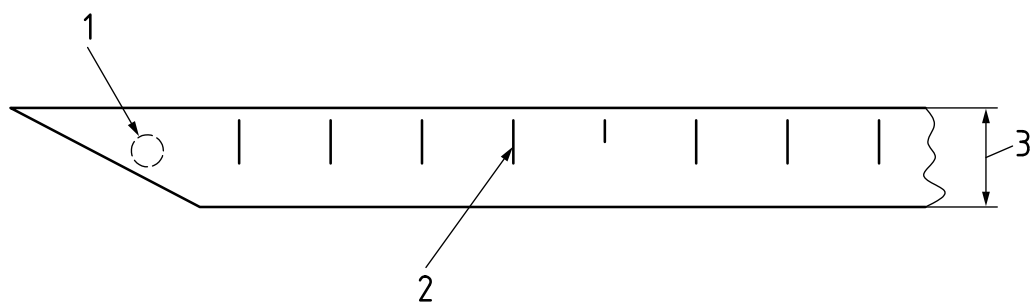
6.1.1 Type of sensors and accuracy

Thermocouples, resistance thermometers, or thermistors may be used to measure the temperatures inside the wall, on the surface, and in the air. Thermocouples shall be type T and shall satisfy the tolerance of class 1 described in IEC 60584-1. For resistance thermometers or thermistors, the error of temperature measurement converted from the resistance tolerance shall be less than 0,5 °C.

6.1.2 Sensor for measuring temperature distribution in walls

The sensor shall have the following specifications with a rod-like thermometer:

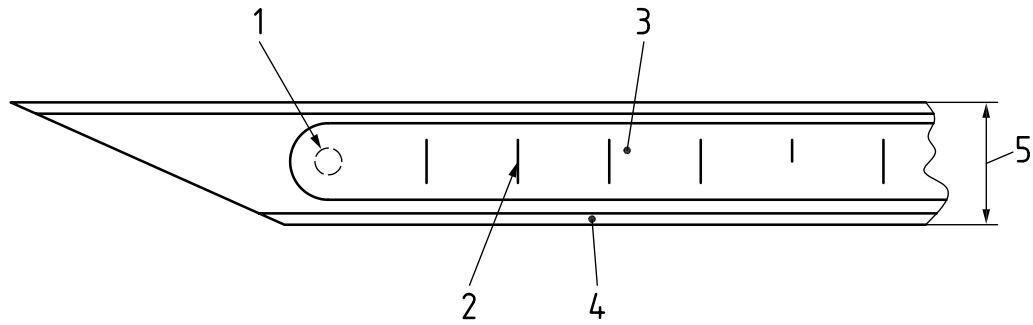
- a) The temperature sensor shall be coated.
- b) The tip shall be processed in a needle-like shape, as shown in [Figure 1](#), in order to penetrate the insulation material without deforming the installed insulation layer. This type of sensor is already manufactured and is commercially available for food processing applications. A temperature sensor with a hard tube shell, as shown in [Figure 2](#), can also be used. The tip of the tube shell shall have a needle shape and the tube shell shall be hard enough to penetrate the insulation layer.
- c) The diameter of the sensor rod, including the coating, shall be not more than 1,0 mm. The outer diameter of the tube shell, if any, shall not exceed 1,3 mm.
- d) The sensor rod shall have a scale indicating the insertion depth of the temperature sensing portion.
- e) The sensor rod may have one or more than one temperature sensing portion. In sensor rods with multiple sensing portions, the sensing portions shall be arranged at the same interval (not to exceed 15 mm) along the rod, as shown in [Figure 3](#). Use of a sensor rod with more than one sensing portion makes it possible to measure the temperature distribution along the borehole without traversing the sensor.
- f) The thermal bridge effect of the sensor-rod shall be small enough that the value of $N_{c,nom}$ obtained by the calibration method shown in [Annex A](#) (normative) is less than 0,5.



Key

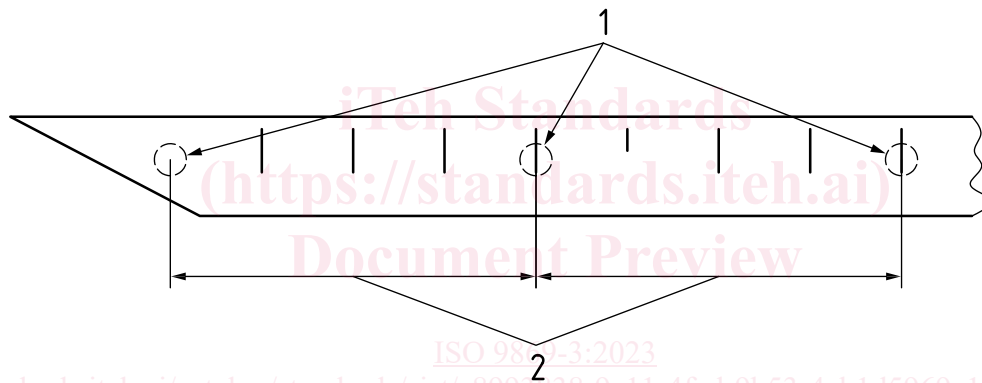
- 1 temperature sensing portion
- 2 scale
- 3 diameter of sensor rod

Figure 1 — Temperature sensor with a needle-like shape (tip part)



- Key**
- 1 temperature sensing portion
 - 2 scale
 - 3 temperature sensor
 - 4 tube shell
 - 5 outer diameter of tube shell

Figure 2 — Temperature sensor with a hard tube shell (tip part)



- Key**
- 1 temperature sensing portions
 - 2 interval of sensing portions

Figure 3 — Temperature sensor having multiple sensing portions (with a needle-like shape, tip part)

6.1.3 Sensors for measuring surface and air temperatures

The sensors for measuring the surface and air temperatures shall be in accordance with ISO 9869-1, except that thermistor sensors can also be used.

6.2 Borescope

A borescope is used to visually check the condition of insulation installation and the thickness of the insulation layer in the wall (building element).

- a) The borescope shall have an illumination device. The viewing angle shall be sufficiently wide and the visual resolution shall be sufficiently fine to determine reliably whether insulation material is present in the wall (building element) or not;