
**Motorcycles — Guideline for
verification of total running resistance
force during mode running on a
chassis dynamometer**

*Motorcycles — Lignes directrices pour la vérification de la force
totale de résistance à l'avancement durant les essais sur un banc
dynamométrique en mode roulage*

iTeh STANDARDS PREVIEW
(standards.iteh.ai)

ISO/TR 5262:2023

<https://standards.iteh.ai/catalog/standards/sist/13deda68-2745-4cf5-aaa5-d701530c2162/iso-tr-5262-2023>



iTeh STANDARD PREVIEW
(standards.iteh.ai)

ISO/TR 5262:2023

<https://standards.iteh.ai/catalog/standards/sist/13deda68-2745-4cf5-aaa5-d701530c2162/iso-tr-5262-2023>



COPYRIGHT PROTECTED DOCUMENT

© ISO 2023

All rights reserved. Unless otherwise specified, or required in the context of its implementation, no part of this publication may be reproduced or utilized otherwise in any form or by any means, electronic or mechanical, including photocopying, or posting on the internet or an intranet, without prior written permission. Permission can be requested from either ISO at the address below or ISO's member body in the country of the requester.

ISO copyright office
CP 401 • Ch. de Blandonnet 8
CH-1214 Vernier, Geneva
Phone: +41 22 749 01 11
Email: copyright@iso.org
Website: www.iso.org

Published in Switzerland

Contents

	Page
Foreword.....	iv
Introduction.....	v
1 Scope.....	1
2 Normative references.....	1
3 Terms and definitions.....	1
4 Symbols.....	2
5 Evaluation method.....	3
5.1 Test summary.....	3
5.2 Vehicle test.....	4
5.2.1 Test cycles.....	4
5.2.2 Warm-up condition.....	4
5.2.3 Evaluation requirements.....	4
5.2.4 Evaluation procedure.....	5
5.3 Simulation test.....	5
5.3.1 Test cycles.....	5
5.3.2 Evaluation requirements.....	5
5.3.3 Evaluation procedure.....	6
6 Test result.....	6
6.1 General.....	6
6.2 Vehicle test result.....	7
6.2.1 Relationship between fuel consumption and correlation coefficient of vehicle 1,2,3 and 4.....	7
6.2.2 Relationship between fuel consumption and slope of the regression line of vehicle 1,2,3 and 4.....	8
6.2.3 Relationship between fuel consumption and intercept of the regression line of vehicle 1,2,3 and 4.....	9
6.2.4 Relationship between fuel consumption and relative standard deviation of vehicle 1,2,3 and 4.....	10
6.2.5 Relationship between fuel consumption and integral work error of vehicle 1,2,3 and 4.....	11
6.3 Simulation test result.....	12
6.3.1 Relationship between fuel consumption and dead time of vehicle 5.....	12
6.3.2 Relationship between fuel consumption and rise time of vehicle 5.....	13
7 Guideline.....	15

Foreword

ISO (the International Organization for Standardization) is a worldwide federation of national standards bodies (ISO member bodies). The work of preparing International Standards is normally carried out through ISO technical committees. Each member body interested in a subject for which a technical committee has been established has the right to be represented on that committee. International organizations, governmental and non-governmental, in liaison with ISO, also take part in the work. ISO collaborates closely with the International Electrotechnical Commission (IEC) on all matters of electrotechnical standardization.

The procedures used to develop this document and those intended for its further maintenance are described in the ISO/IEC Directives, Part 1. In particular, the different approval criteria needed for the different types of ISO documents should be noted. This document was drafted in accordance with the editorial rules of the ISO/IEC Directives, Part 2 (see www.iso.org/directives).

Attention is drawn to the possibility that some of the elements of this document may be the subject of patent rights. ISO shall not be held responsible for identifying any or all such patent rights. Details of any patent rights identified during the development of the document will be in the Introduction and/or on the ISO list of patent declarations received (see www.iso.org/patents).

Any trade name used in this document is information given for the convenience of users and does not constitute an endorsement.

For an explanation of the voluntary nature of standards, the meaning of ISO specific terms and expressions related to conformity assessment, as well as information about ISO's adherence to the World Trade Organization (WTO) principles in the Technical Barriers to Trade (TBT), see www.iso.org/iso/foreword.html.

This document was prepared by Technical Committee ISO/TC 22, *Road vehicles*, Subcommittee SC 38, *Motorcycles and mopeds*.

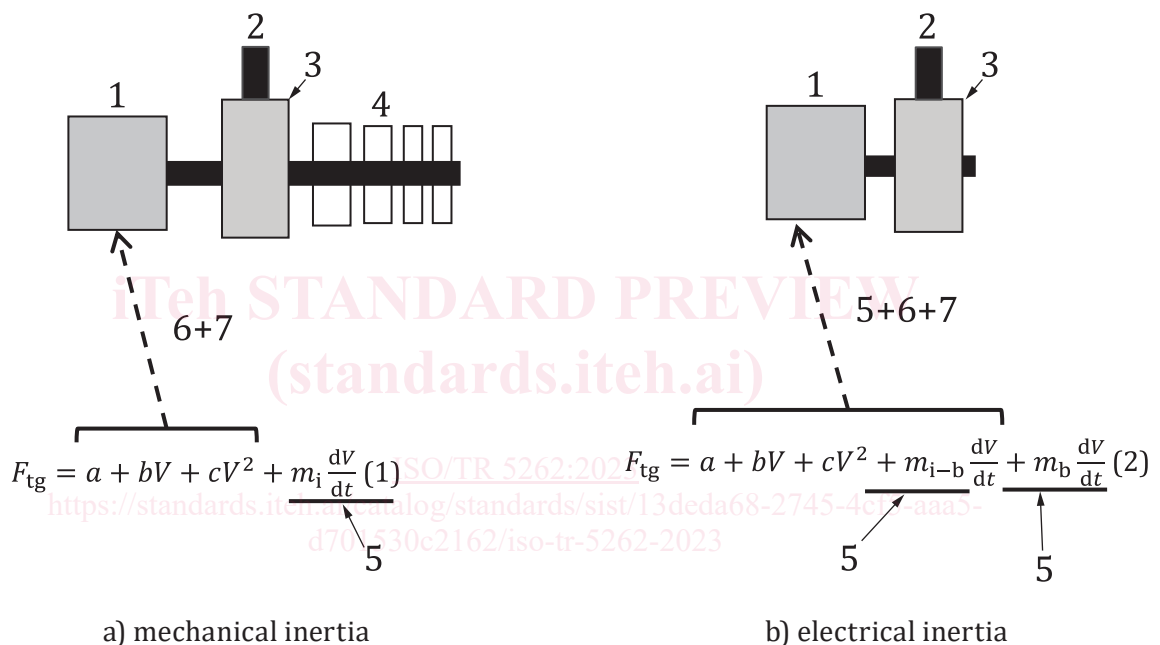
ISO/TR 5262:2023

Any feedback or questions on this document should be directed to the user's national standards body. A complete listing of these bodies can be found at www.iso.org/members.html.

Introduction

A mechanical inertia chassis dynamometer (Formula (1)) is a device with a mechanical flywheel, whereas a chassis dynamometer (Formula (2)) using the electric inertia function is not equipped with such a mechanical flywheel equivalent to inertia mass system and the inertia force is electrically set in the same way of the running resistance force control (Figure 1). The inertia force is generated by the acceleration and/or deceleration, therefore, it is necessary to check the performance of electric inertia function during the mode running test and ISO 18580 specifies the method to verify the chassis dynamometer operated normally.

However, ISO 18580 does not provide a threshold for the verification result, and it is difficult to determine its validity. Therefore, we investigate the effect of factors affecting fuel consumption on ISO 18580 verification results, and propose a technical report that shows the guideline for determining the threshold of the verification result.



Key

- 1 dynamometer
- 2 tire
- 3 roller
- 4 flywheels
- 5 acceleration resistance
- 6 rolling resistance
- 7 aerodynamic drag resistance

NOTE The symbols are defined in [Clause 4](#).

Figure 1 — The principle of mechanical and electrical inertia dynamometer

Motorcycles — Guideline for verification of total running resistance force during mode running on a chassis dynamometer

1 Scope

This document shows the results of investigating the guideline for determining the threshold of the evaluation result on an electric inertial chassis dynamometer that electrically controls the amount of inertia using fuel consumption.

This document is applicable when the running resistance force of a chassis dynamometer is set in accordance with ISO 18580.

2 Normative references

The following documents are referred to in the text in such a way that some or all of their content constitutes requirements of this document. For dated references, only the edition cited applies. For undated references, the latest edition of the referenced document (including any amendments) applies.

ISO 18580, *Motorcycles — Verification of total running resistance force during mode running on a chassis dynamometer*

3 Terms and definitions

For the purposes of this document, the terms and definitions given in ISO 18580 and the following apply.

ISO and IEC maintain terminology databases for use in standardization at the following addresses:

— ISO Online browsing platform: available at <https://www.iso.org/obp>

3.1

dead time

time between the input being given and the output

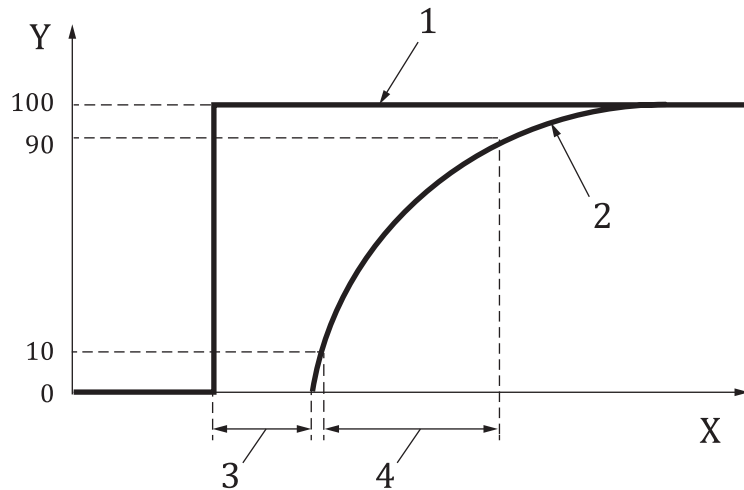
Note 1 to entry: Dead time is shown in [Figure 2](#), key 3.

3.2

rise time

time required to reach 10 %-90 % of the final output value

Note 1 to entry: Rise time is shown in [Figure 2](#), key 4.



Key

- X time [s]
- Y rate [%]
- 1 input
- 2 output
- 3 dead time
- 4 rise time

iTeh STANDARD PREVIEW
 Figure 2 — Image of dead time and rise time
 (standards.itih.ai)

4 Symbols

ISO/TR 5262:2023

<https://standards.itih.ai/catalog/standards/sist/13ded68-2745-4cf5-aaa5-d7015-2023-iso-tr-5262-2023>

Symbol	Definition	Unit
A	slope of the regression line	—
a	rolling resistance force of front wheel	N
B	intercept of the regression line	—
b	coefficient proportional to motorcycle speed	N/(km/h)
c	aerodynamic drag coefficient	N/(km/h) ²
CO	carbon monoxide	g/km
CO ₂	carbon dioxide	g/km
D	gasoline density	kg/l
e_w	integral work error	%
R_{fc}	rate of fuel consumption	l/100 km
F_{tg}	target total running resistance force	N
HC	hydrocarbon	g/km
m_i	mass obtained by adding the rotating mass of the front wheel to the total mass of the motorcycle, rider and instruments	kg
m_b	equivalent inertia mass of mechanical rotating parts of chassis dynamometer	kg
t	time	s
V	roller rotational speed	km/h
γ	correlation coefficient	—
σ_{cov}	relative standard deviation (cov: coefficient of variation)	%

5 Evaluation method

5.1 Test summary

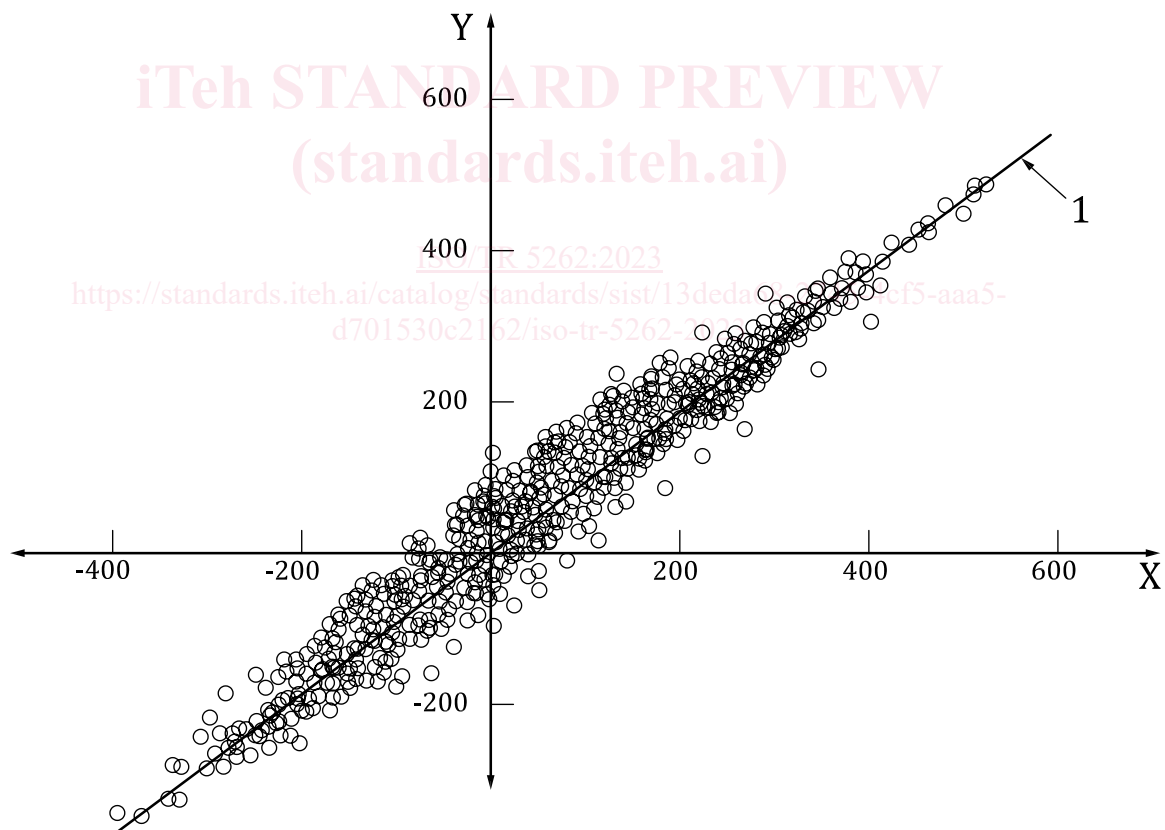
As factors affecting fuel consumption, inertial quantity, front wheel rolling resistance, wind loss resistance, dead time and rise time were used.

The test vehicles were investigated by selecting 5 models (1, 2, 3, 4 and 5) from different vehicle class, gear type, and displacement of Global technical regulation No. 2.

In the test vehicles of 1, 2, 3 and 4 the setting of the mechanical inertia amount, front wheel rolling resistance, and aerodynamic loss resistance was changed and tested in the vehicle, and the effect of each setting difference on the relationship between fuel consumption and the target of ISO 18580 and the evaluation items of measured total running resistance were investigated (Figure 3).

Table 1 shows the ISO 18580 evaluation items and Table 2 shows each vehicle's specifications.

In addition, since dead time and rise time, which are the inherent performance of the chassis dynamometer, are difficult to actually generate and control by actually generating delays with the chassis dynamometer, using simulation, the fuel consumption effect of running resistance load delay in the test cycle of the vehicle 5 is calculated, the effect of simulated fuel consumption on the relationship between ISO 18580 targets and measured total running resistance evaluation items was investigated.



Key

- X target running resistance force [N]
- Y measured running resistance force [N]
- 1 regression line $A \times F_{tg} + B$

Figure 3 — Image of relationship between target and measured total running resistance force

Table 1 — ISO18580 target and measured total running resistance evaluation items

Correlation coefficient	Slope of the regression line	Intercept of the regression line [N]	Relative standard deviation [%]	Integral work error [%]
γ	A	B	σ_{cov}	e_W

Table 2 — Vehicles list

Vehicle	Class	P/T Type	Displacement [cc]	Tire size (rear)	Number of cylinders	Number of gears
1	Class 2-2	AT	250	140/70-14	1	-
2	Class 2-1	MT	150	140/60R17	1	5
3	Class 3-2	DCT	1 000	130/70-17	1	6
4	Class 3-2	MT	650	160/60ZR17	2	6
5	Class 1	AT	50	80/100-10	1	-

5.2 Vehicle test

5.2.1 Test cycles

The vehicle test was carried out in the test cycle of WMTC Type I test which matched the category of the vehicle 1, 2, 3 and 4.

5.2.2 Warm-up condition

In order to reduce the effect on the experimental data and improve reproducibility, the chassis dynamometer was warmed up by the method recommended by the chassis dynamometer maker before the test. The test vehicle warmed up on a chassis dynamometer so that the test vehicle manufacturer recommended oil temperature.

5.2.3 Evaluation requirements

As shown in the [Table 3](#), the setting range is determined in anticipation of an effect of about ± 5 % work rate so that the fuel efficiency impact can be determined in each test vehicles.

The data evaluation range was 1 km/h or more, and the integrated work rate and fuel consumption rate were evaluated in the test cycle area where the vehicle was loaded with running resistance and consumed fuel.

Fuel consumption is calculated from exhaust gas data for all test cycles ([Formula \(3\)](#)).

Table 3 — Vehicles statements and change value

Vehicle	Parameter	Base	Change value
1	m_i [kg]	250	+30; -30 kg
	a [N]	22,0	+10; -10 N
	c [N/(km/h) ²]	0,023 8	+10; -10 %
2	m_i [kg]	210	+40; -40 kg
	a [N]	18,5	+8; -8 N
	c [N/(km/h) ²]	0,023 2	+10; -10 %
3	m_i [kg]	310	+90; -90 kg
	a [N]	27,3	+15; -15 N
	c [N/(km/h) ²]	0,024 7	+7,5; -7,5 %

Table 3 (continued)

Vehicle	Parameter	Base	Change value
4	m_i [kg]	270	+80; -80 kg
	a [N]	23,8	+15; -15 N
	c [N/(km/h) ²]	0,024 1	+7,5; -7,5 %

The fuel consumption calculation formula from emission data:

$$R_{fc} = \frac{0,1155}{D} \times (0,866 \times \text{HC} + 0,429 \times \text{CO} + 0,273 \times \text{CO}_2) \quad (3)$$

5.2.4 Evaluation procedure

After the warm-up was completed, the test cycles were run with setting contents including base setting of the amount of mechanical inertia, front wheel rolling resistance and wind loss resistance. In that case, total running resistance and exhaust gas data were measured.

Thereafter, from the test measurement results of each vehicle, the target of ISO 18580 and the evaluation items of the total running resistance measured and the fuel consumption was calculated.

From the calculation results, the fuel consumption of the base setting was compared with the fuel consumption of each setting change, and it was calculated as the fuel consumption rate.

Furthermore, this is summarized the relationship between the fuel consumption rate at the time of each setting change and the target of ISO 18580 and the evaluation items of the measured total running resistance.

5.3 Simulation test

5.3.1 Test cycles

The simulation test was carried out in the test cycle of WMTC Type I test which matched the category of the vehicle 5.

5.3.2 Evaluation requirements

The delay setting change range was simulated to the range where the threshold value can be examined from the target of ISO 18580 and the evaluation items of the measured total running resistance force and the fuel consumption rate. As a result, it became as shown in [Table 4](#).

The data evaluation range was 1 km/h or more, and the integrated work rate and fuel consumption rate were evaluated in the test cycle area where the vehicle was loaded with running resistance and consumed fuel.

[Table 5](#) shows the equation (Formulae (4), (5), (6) and (7)) relating workload to fuel consumption for the test results of vehicles 1, 2, 3 and 4. Formula (8) is the average of Formulae (4), (5), (6) and (7) and was used to calculate fuel consumption leading to integrated work quantity.

Table 4 — Vehicle statements and change

Parameter	Change value
Dead time[ms]	0; 200; 400; 600; 800
Rise time[ms]	0; 200; 400; 600; 800