

**ISO/FDIS 2615:2023(E)**

ISO/TC 193/SC 1

~~Date: 2023-11-17~~

Secretariat: NEN

Date: 2024-01-03

## **Analysis of natural gas — Biomethane — Determination of the content of compressor oil**

*Analyse du gaz naturel — Biométhane — Détermination de la teneur en huile de compresseur*

iTeh Standards  
(<https://standards.itih.ai>)  
Document Preview

**FDIS stage**

© ISO ~~2023~~2024

All rights reserved. Unless otherwise specified, or required in the context of its implementation, no part of this publication may be reproduced or utilized otherwise in any form or by any means, electronic or mechanical, including photocopying, or posting on the internet or an intranet, without prior written permission. Permission can be requested from either ISO at the address below or ISO's member body in the country of the requester.

ISO copyright office

~~CP 401~~ • Ch. de Blandonnet 8 • ~~CP 401~~

CH-1214 Vernier, Geneva, ~~Switzerland~~

~~Tel:Phone:~~ + 41 22 749 01 11

~~Fax + 41 22 749 09 47~~

~~E-mail:~~ [copyright@iso.org](mailto:copyright@iso.org)

~~Website:~~ [www.iso.org](http://www.iso.org)

Published in Switzerland

# iTeh Standards (<https://standards.iteh.ai>) Document Preview

ISO/FDIS 2615

<https://standards.iteh.ai/catalog/standards/iso/e8948c84-1ffd-49f0-9cd0-409d257c2c72/iso-fdis-2615>

**Contents—Page**

Foreword .....	v
Introduction.....	vi
1 Scope .....	1
2 Normative references.....	1
3 Terms and definitions.....	1
4 Principle.....	2
5 Chemicals and materials .....	3
5.1 Compressor oils.....	3
5.2 Solvent.....	4
5.3 Sampling filters.....	4
5.4 Backup filters.....	4
5.5 Calibration standards.....	4
5.6 Nitrogen pure gas.....	4
5.7 Compressed liquid propane .....	4
6 Apparatus.....	4
6.1 Gas chromatograph.....	4
6.2 Capillary column.....	4
6.3 Ultrasonic bath.....	4
6.4 Pressurised fluid extraction apparatus.....	4
6.5 Filter housing.....	5
6.6 Rotary evaporator, concentration apparatus.....	5
6.7 Laboratory glassware.....	5
7 Sampling .....	5
7.1 Sampling apparatus .....	5
7.2 Sampling steps .....	5
8 Methods to recover the oil from the buffer tank.....	6
9 Extraction procedure for coalescing filters.....	6
9.1 Procedure 1: Ultrasonic extraction – nitrogen flush.....	6
9.2 Procedure 2: Pressurised fluid extraction.....	6
10 Analysis .....	7
10.1 GC/MS analysis .....	7
10.2 GC/FID analysis .....	7
11 Calculations .....	8
12 Test report.....	9

Annex A (informative) Example of a GC/MS chromatogram obtained for a compressor oil (Figure A.1) ..... 10

Annex B (informative) Example of a GC/FID chromatogram obtained for a compressor oil (Figure B.1) ..... 12

Annex C (informative) Different types of oils ..... 14

Bibliography ..... 17

iTeh Standards  
(<https://standards.iteh.ai>)  
Document Preview

ISO/FDIS 2615

<https://standards.iteh.ai/catalog/standards/iso/e8948c84-1ffd-49f0-9cd0-409d257c2c72/iso-fdis-2615>

## Foreword

ISO (the International Organization for Standardization) is a worldwide federation of national standards bodies (ISO member bodies). The work of preparing International Standards is normally carried out through ISO technical committees. Each member body interested in a subject for which a technical committee has been established has the right to be represented on that committee. International organizations, governmental and non-governmental, in liaison with ISO, also take part in the work. ISO collaborates closely with the International Electrotechnical Commission (IEC) on all matters of electrotechnical standardization.

The procedures used to develop this document and those intended for its further maintenance are described in the ISO/IEC Directives, Part 1. In particular, the different approval criteria needed for the different types of ISO document should be noted. This document was drafted in accordance with the editorial rules of the ISO/IEC Directives, Part 2 (see [www.iso.org/directives](http://www.iso.org/directives)).

ISO draws attention to the possibility that the implementation of this document may involve the use of (a) patent(s). ISO takes no position concerning the evidence, validity or applicability of any claimed patent rights in respect thereof. As of the date of publication of this document, ISO had not received notice of (a) patent(s) which may be required to implement this document. However, implementers are cautioned that this may not represent the latest information, which may be obtained from the patent database available at [www.iso.org/patents](http://www.iso.org/patents). ISO shall not be held responsible for identifying any or all such patent rights.

Any trade name used in this document is information given for the convenience of users and does not constitute an endorsement.

For an explanation of the voluntary nature of standards, the meaning of ISO specific terms and expressions related to conformity assessment, as well as information about ISO's adherence to the World Trade Organization (WTO) principles in the Technical Barriers to Trade (TBT), see [www.iso.org/iso/foreword.html](http://www.iso.org/iso/foreword.html).

This document was prepared by Technical Committee ISO/TC 193, *Natural gas*, Subcommittee SC 1, *Analysis of natural gas*, in collaboration with the European Committee for Standardization (CEN) Technical Committee CEN/TC 408, *Natural gas and biomethane for use in transport and biomethane for injection in the natural gas grid*, in accordance with the Agreement on technical cooperation between ISO and CEN (Vienna Agreement).

Any feedback or questions on this document should be directed to the user's national standards body. A complete listing of these bodies can be found at [www.iso.org/members.html](http://www.iso.org/members.html).

## Introduction

This document supports the implementation of specifications for biomethane and biogas such as ISO 15403-1 or the EN 16723 series [9], [10], [4], [5] when used in the natural gas grids and when used as a transport fuel. Implementation of these specifications require fit-for-purpose measurement methods with known performance and acceptable metrological traceability to support the trade in renewable gases and conformity assessment.

# iTeh Standards (<https://standards.iteh.ai>) Document Preview

ISO/FDIS 2615

<https://standards.iteh.ai/catalog/standards/iso/e8948c84-1ffd-49f0-9cd0-409d257c2c72/iso-fdis-2615>

# Analysis of natural gas — Biomethane — Determination of the content of compressor oil

## 1 Scope

This document gives general guidance for the sampling and gas chromatographic analysis of compressor oil in biomethane or compressed natural gas (CNG). The compressor oil mass fraction is determined by sampling on coalescing filters under defined operational conditions (the two first cubic meters of gas referring to standard conditions, delivered at a refuelling station).

Compressor oils are lubricants used in mechanical devices where the purpose is to reduce the volume and increase the pressure of gases for use in a variety of applications.

The method is solely applicable to compressed gas ( $p > 18$  MPa).

The compressor oil content is expressed as mass fraction. The scope of this method is from 3 mg/kg – 30 mg/kg.

## 2 Normative references

The following documents are referred to in the text in such a way that some or all of their content constitutes requirements of this document. For dated references, only the edition cited applies. For undated references, the latest edition of the referenced document (including any amendments) applies.

ISO/IEC Guide 98-3, *Uncertainty of measurement — Part 3: Guide to the expression of uncertainty in measurement (GUM:1995)*

ISO 6974 (all parts), *Natural gas — Determination of composition and associated uncertainty by gas chromatography*

ISO 6976, *Natural gas — Calculation of calorific values, density, relative density and Wobbe indices from composition*

ISO 8573-5, *Compressed air — Part 5: Test methods for oil vapour and organic solvent content*

ISO/IEC 17025:2017, *General requirements for the competence of testing and calibration laboratories*

ISO 14532, *Natural gas — Vocabulary*

## 3 Terms and definitions

For the purposes of this document, the terms and definitions given in ISO 14532, ISO/IEC Guide 98-3 and the following apply.

ISO and IEC maintain terminology databases for use in standardization at the following addresses:

- ISO Online browsing platform: available at <https://www.iso.org/obp>
- IEC Electropedia: available at <https://www.electropedia.org/>

**3.1 response**

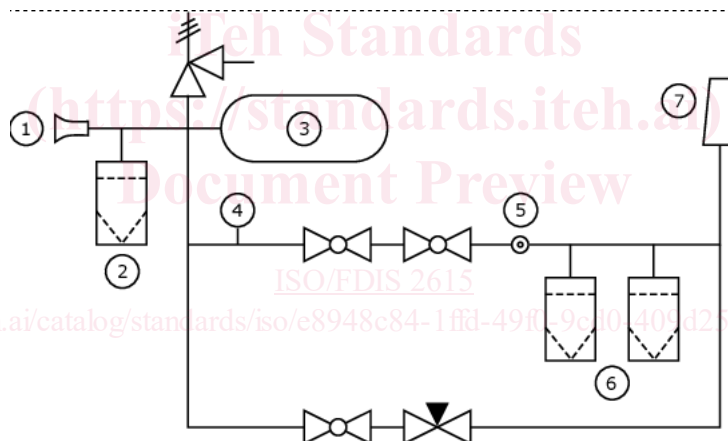
output signal of the measuring system, for a component that is measured as peak area or peak height (given in EN ISO 6974-1)

[SOURCE: ISO 6974-1:2012, 3.1, modified — The symbol y was deleted.]

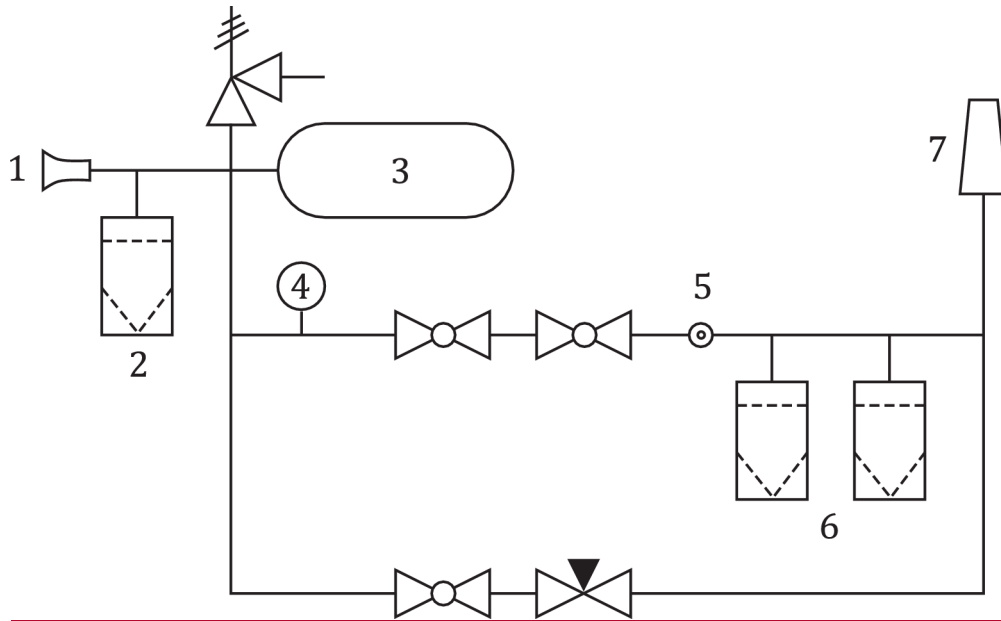
**4 Principle**

This method is based on sampling a sufficiently large volume of gas and condensating the compressor oil on a coalescing filter by expanding the gas through a nozzle spray. The compressor oil thus collected is analysed using gas chromatography. The gas chromatograph is calibrated with calibrants ideally using compressor oil of the same make. The method uses a flame ionization detector (FID) or mass spectrometer (MS).

The pressure of the compressed gas to analyze is drastically reduced by forcing the gas to pass through a nozzle spray with a limited hole diameter (which implies that the temperature of the gas also drops) so as to make the oil condense as droplets and deposit on a coalescing filter. Two filters are connected in series, a main filter and a backup filter. The oil that deposits in the buffer tank is recovered as well. For a typical sampling arrangement, see Figure 1.







**Key**

- 1—NGV1 receptacle for car refueling or NGV2 receptacle for truck/bus refueling
- 2—Pre-filter
- 3—Buffer tank
- 4—Pressure indicator
- 5—Nozzle spray
- 6—Filters
- 7—Vent

- 1 [NGV1 receptacle for car refueling or NGV2 receptacle for truck/bus refueling](#)
- 2 [pre-filter](#)
- 3 [buffer tank](#)
- 4 [pressure indicator](#)
- 5 [nozzle spray](#)
- 6 [filters](#)
- 7 [vent](#)

**Figure 1 — Compressor oil sampler**

## 5 Chemicals and materials

### 5.1 Compressor oils

For calibration purposes, samples of all compressor oils used at the station or any other oils that can be present in the gas to be analysed shall be separately collected to be used for preparing the calibration standards. Please note that oil references should ideally come from the same production batch as the ones actually used at the station.

If not feasible, calibration should be made using equivalent oils. The closer the characteristics of the oil being used for the calibrants and the oil present in the gas, the better the performance of the method.

## 5.2 Solvent

Dichloromethane, pentane, hexane, analysis grade, or another suitable organic solvent of chromatographic quality, for preparing oil calibration standards. This solvent should be of sufficient purity to ensure that it does not give rise to interferences during the analysis. Use only a solvent of recognized analytical grade. The same solvent should be used for preparing oil calibration standards and for sample extraction. This solvent should be of sufficient purity to ensure that it does not give rise to interferences during the analysis. Use only solvent of recognized analytical grade

### 5.4.5.3 Sampling filters

The sampling filters are a high-efficiency coalescing filter made of borosilicate microfibers with fluorocarbon resin binder with more than 99,99 % efficiency at 0,01 µm. Flow rate through the sampling filter shall not exceed the manufacturers' recommendation for the test pressure.

### 5.5.5.4 Backup filters

This filter is identical to the sampling filter and, in the event of malfunction of the sampling filter, collects any oil that passes through it.

### 5.6.5.5 Calibration standards

Shall be prepared by diluting oil to the concentration of (1 to 10) mg/~~ml~~ml.

### 5.7.5.6 Nitrogen pure gas

Nitrogen of a minimum 99,999 % purity and a ~~Total Hydrocarbon Content~~total hydrocarbon content (THC) of less than 0,5 µmol/mol.

### 5.8.5.7 Compressed liquid propane

Propane of a minimum 99,999 % purity.

## 6 Apparatus

### 6.1 Gas chromatograph

This is equipped with a mass spectrometer (GC/MS), electron ionization (EI) mode, or a flame ionisation detector (GC/FID). The liquid sample is injected with an automated microsyringe through a septum into a port at the head of the column.

### 6.2 Capillary column

For gas chromatography, fused silica column coated with a non-polar bonded stationary phase which performs equivalent to a 5 % diphenyl, 95 % dimethylpolysiloxane.

### 6.3 Ultrasonic bath

With start at ambient temperature. Temperature increase due to sonication may be neglected.

### 6.4 Pressurised fluid extraction apparatus

Consisting of extraction cells which shall be heated to 150 °C at static pressures up to 10 MPa. The device should be programmable regarding the temperature, duration and number of extraction cycles. The cells shall be flushed with the extraction solvent.