

INTERNATIONAL STANDARD

ISO
3078

Second edition
1987-06-01



INTERNATIONAL ORGANIZATION FOR STANDARDIZATION
ORGANISATION INTERNATIONALE DE NORMALISATION
МЕЖДУНАРОДНАЯ ОРГАНИЗАЦИЯ ПО СТАНДАРТИЗАЦИИ

Shipbuilding — Cargo winches

Construction navale — Treuils de charge

iTeh STANDARD PREVIEW
(standards.iteh.ai)

ISO 3078:1987

<https://standards.iteh.ai/catalog/standards/sist/9acea14b-8fa3-42ee-90b7-c9fdb1f4d0a/iso-3078-1987>

Reference number
ISO 3078:1987 (E)

Foreword

ISO (the International Organization for Standardization) is a worldwide federation of national standards bodies (ISO member bodies). The work of preparing International Standards is normally carried out through ISO technical committees. Each member body interested in a subject for which a technical committee has been established has the right to be represented on that committee. International organizations, governmental and non-governmental, in liaison with ISO, also take part in the work.

Draft International Standards adopted by the technical committees are circulated to the member bodies for approval before their acceptance as International Standards by the ISO Council. They are approved in accordance with ISO procedures requiring at least 75 % approval by the member bodies voting.

International Standard ISO 3078 was prepared by Technical Committee ISO/TC 8, *Shipbuilding and marine structures*.

This second edition cancels and replaces the first edition (ISO 3078:1974), of which it constitutes a minor revision.

Users should note that all International Standards undergo revision from time to time and that any reference made herein to any other International Standard implies its latest edition, unless otherwise stated.

iTeh STANDARD PREVIEW
(standards.iteh.ai)

<https://standards.iteh.ai/catalog/standards/sist/9acea14b-8fa3-42ee-90b7-c9fadb1f4d0a/iso-3078-1987>

Shipbuilding — Cargo winches

1 Scope and field of application

This International Standard specifies the characteristics of cargo winches on cargo derricks, especially winches with electric or hydraulic drive.

2 References

ISO 2408, *Steel wire ropes for general purposes — Characteristics*.

ISO 3828, *Shipbuilding and marine structures — Deck machinery — Vocabulary*.

ISO 6482, *Shipbuilding — Deck machinery — Warping end profiles*.

ISO 7825, *Shipbuilding — Deck machinery — General requirements*.

3 Definitions

For the purposes of this International Standard, the definitions given in ISO 3828 and the following definitions apply.

3.1 cargo winch: Winch used for hoisting and lowering cargo. (Definition repeated from ISO 3828.)

3.2 nominal size: Size which corresponds to the nominal load, i.e. the maximum working load at the hook, in tonnes, which the winch is rated to lift in direct operations (with a single sheave at the derrick-head and a single sheave at the foot — see figure 1).

Winches are graded according to their nominal size as given in the table (see clause 5).

If the winch has reduction gear with several gear ratios, each step shall correspond to a nominal load in the table.

NOTES

- 1 The nominal sizes are derived from the preferred number series.
- 2 The definition of the nominal size given above is not applicable to heavy derricks.

3.3 nominal speed of hoisting: Speed at which the winch is capable of lifting the nominal load.

The minimum nominal speeds of hoisting are given in the table (see clause 5).

3.4 drum load: Maximum rope tension, in kilonewtons, measured at the drum exit when the winch is hauling in at the nominal speed with the rope wound on the drum in a single layer. (Definition repeated from ISO 3828.)

NOTE — The drum load is approximately 11 times the nominal load measured in tonnes. The factor of 11 takes account of the loss through friction due to the sheaves and of the ratio between force in kilonewtons and mass in tonnes.

3.5 Right-hand and left-hand cargo winches

3.5.1 right-hand winch: Winch where the reduction gear or the drive for the drum is on the right-hand side of the drum in relation to an observer situated on the side of the motor, power supply or controller (in the case of a symmetrical winch). (See figure 2.)

3.5.2 left-hand winch: Winch where the reduction gear or the drive for the drum is on the left-hand side of the drum in relation to an observer situated on the side of the motor, power supply or controller (in the case of a symmetrical winch).

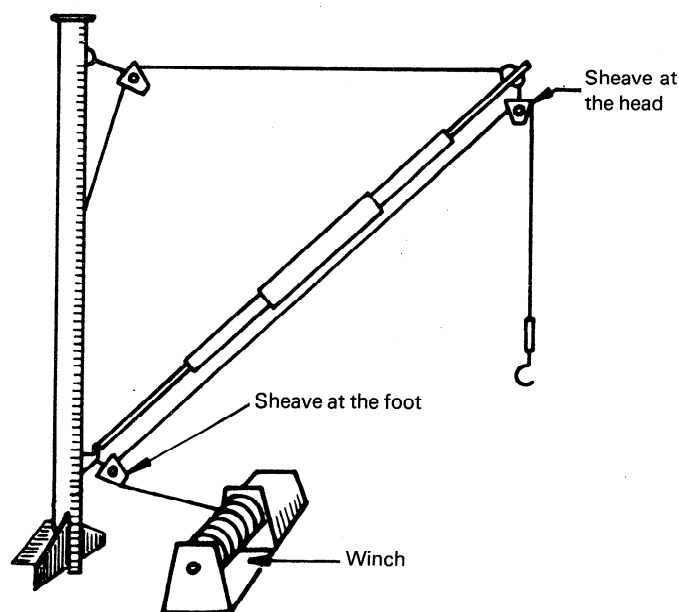


Figure 1 — Example of use of a winch

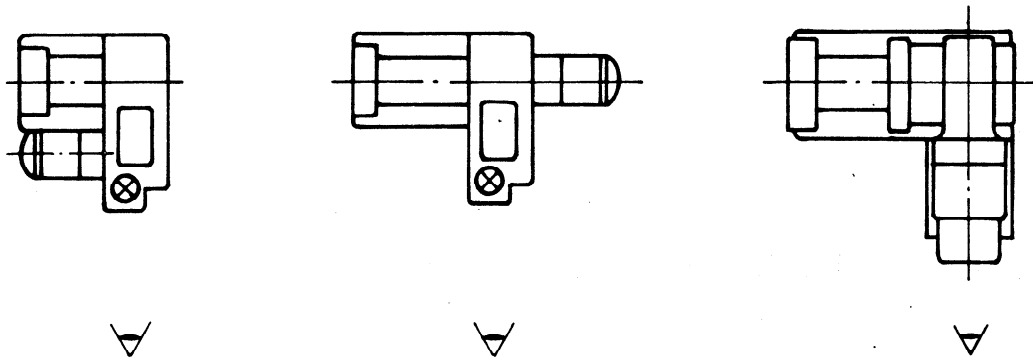


Figure 2 — Examples of right-hand winches

4 Design and operation

Winches shall meet the general requirements for deck equipment in ISO 7825 and the specific requirements given in 4.1 to 4.6.

4.1 Stress calculation

The stress calculation of the mechanical parts is based on:

- the drum load on the winch: in this case the allowable calculated stresses based on simple elastic theory of any part of the winch shall not be greater than 0,4 times the 0,2 % proof stress of the material;
- the maximum torque of the motor corresponding to the most severe working conditions: in this case the allowable stresses shall be within 0,9 times the 0,2 % proof stress of the material.

4.2 Direction of motion of operating devices

The direction of motion of the operating devices shall be such that the load is raised by clockwise movement at a hand-wheel or crank-handle, or alternatively movement of a hand-lever towards the operator.

Whatever the form of motive power, the operating device shall be arranged to return to the braking position automatically when the operator releases the control.

NOTE — Reference should be made to the ILO Code of practice on *Safety and health in dock work*.

4.3 Acceleration and deceleration

In direct manoeuvre at drum load, the acceleration and deceleration shall have a mean value of not more than 3 m/s².

4.4 Braking

4.4.1 Electric winches shall be provided with an automatic braking system which operates when bringing the operating

device to zero, or to the braking position, and also when there is no power on the winch.

4.4.2 The braking system shall be capable of effectively arresting and holding a load at least 1,5 times the nominal load.

Means shall also be provided for lowering the load in the event of power failure.

4.4.3 Winches with a declutchable drum shall be provided with a locking device, or a brake on the drum capable of preventing rotation of the drum.

When a brake is required to hold the load, this shall be specified by the purchaser.

4.4.4 The braking system shall be such as not to induce an excessive shock load.

4.5 Drum design

For all operating conditions, the distance between the top layer of the wire rope on the drum and the outer edge of the drum flanges shall be at least 2,5 times the diameter of the wire rope.

NOTE — This requirement only concerns drums not fitted with special wire rope guards to prevent over-spilling of the wire rope.

The diameter of the drum shall be not less than 18 times the diameter of the wire rope, which for design purposes only shall conform to ISO 2408, Group 3, Class 6 × 37, IWR. Other grades and constructions may be used in service.

4.6 Warping ends

A winch may be specified with or without warping ends; their profile shall be in accordance with ISO 6482.

When warping ends are specified, the purchaser shall state whether the drum is to be declutchable or not.

If only one warping end is specified, its position (right or left) shall also be stated in the order.

5 Performance

The performance of cargo winches is given in the table below.

Table — Performance

Characteristic	Nominal size					
	2	3	5	8	12	16
Nominal load (mass), t	2	3,15	5	8	12,5	16
Drum load, kN	22	35	56	90	140	180
Minimum nominal speed of hoisting, v_1 , m/s	Series A	0,50	0,32	0,20	0,12	—
	Series B	1,00	0,63	0,40	0,25	0,12
	Series C	—	—	0,80	0,50	0,32
Maximum speed of setting down the load, v_2 , m/s	0,25	0,20	0,20	0,12	0,10	0,08

6 Acceptance tests

6.1 Rules concerning acceptance tests at manufacturer's works by purchaser

Tests shall be carried out at the manufacturer's works; where this is not possible, however, the tests may be carried out at a place to be agreed between the manufacturer and purchaser.

The result of the tests carried out in accordance with 6.1.1 and 6.1.2 shall be stated in the test certificate.

6.1.1 Type testing

One winch of each type shall be tested in accordance with 6.1.1.1 and 6.1.1.2.

This test may be replaced by a prototype test certificate if agreed between the manufacturer and purchaser.

Where tests are required in addition to the type test, these shall be agreed between the manufacturer and purchaser at the time of contract.

6.1.1.1 Testing in working conditions

The test shall be carried out as follows:

- 30 min continuous hoisting and lowering, through a distance of 10 m under drum load conditions allowing 20 s pause between consecutive cycles, plus 5 min similar cycling on each additional gear ratio, as soon as possible after the 30 min test.
- While testing, the following shall be checked or measured:
 - abnormal temperature of bearings;
 - actual speed for hoisting and lowering;
 - power input, in watts.
- The travel of the load on operation of the brake system shall be checked. The operation of the automatic brake shall be checked when the power is switched off.

6.1.1.2 Test on overload

This test shall be carried out by hoisting a load equal to 1,25 times the nominal load. During lowering, the winch shall be stopped at least three times.

6.1.2 Individual test

The test shall be carried out as follows:

- 30 min running at maximum speed without load (15 min in each direction of rotation).
- When the winch has reduction gear, each gear ratio shall be tested for an additional 5 min at maximum speed.
- While testing, the following shall be checked or measured:
 - tightness against oil leakage;
 - temperature of bearings;
 - presence of abnormal noise;
 - power input, in watts;
 - rotation speed of the drum in each direction.
- At the end of the test, the winch shall be run through the full speed range to check for vibration.

6.2 On-board acceptance tests

This test shall be carried out at the same time as the test of the complete cargo rig, and shall consist of at least one hoisting and one lowering of a load equivalent to the test load of the derrick without checking the speed.

The load at the winch shall not exceed 1,25 times the drum load unless otherwise agreed between the purchaser and manufacturer.

7 Designation

Cargo winches conforming to this International Standard shall be designated by the following indications, in the order given:

- a) denomination: cargo winch;
- b) number of this International Standard: ISO 3078;
- c) type of winch: E for electric, H for hydraulic, O for other type of drive;
- d) nominal size (see 3.2);
- e) speed series (see 3.3): A, B or C;
- f) right- or left-hand winch (R or L) (see 3.5);
- g) number and, where applicable, position of warping ends (see 4.6): R (right) or L (left);
- h) type of drum connection (add X only if it is declutchable);
- i) information on motive power:
 - voltage and frequency of electric current,
 - or
 - hydraulic fluid pressure and flow rate.

Example:

Designation of a cargo winch with electric drive of nominal size 5, series B, left-hand model, with one warping end on the right and with declutchable drum, voltage 440 V and frequency 60 Hz:

Cargo winch ISO 3078 - E - 5 - B - L - 1R - X - 440/60

8 Marking

Cargo winches complying with this International Standard shall be permanently marked with the following information:

- a) number of this International Standard;
- b) nominal size (see 3.2);
- c) speed series (see 3.3).

Example:

ISO 3078 - 5 - B

iTeh STANDARD PREVIEW
(standards.iteh.ai)

ISO 3078:1987

<https://standards.iteh.ai/catalog/standards/sist/9acea14b-8fa3-42ee-90b7-c9fdb1f4d0a/iso-3078-1987>

iTeh STANDARD PREVIEW

(standards.iteh.ai)

This page intentionally left blank

ISO 3078:1987

<https://standards.iteh.ai/catalog/standards/sist/9acea14b-8fa3-42ee-90b7-c9fdb1f4d0a/iso-3078-1987>

iTeh STANDARD PREVIEW
(standards.iteh.ai)

ISO 3078:1987

<https://standards.iteh.ai/catalog/standards/sist/9acea14b-8fa3-42ee-90b7-c9fdb1f4d0a/iso-3078-1987>

UDC 629.12-44 : 621.873.134 : 621.864

Descriptors : shipbuilding, ships, lifting equipment, winches, specifications, tests, designation, marking.

Price based on 4 pages
