



Designation: D6312 – 98 (Reapproved 2012)^{ε1}

Standard Guide for Developing Appropriate Statistical Approaches for Groundwater Detection Monitoring Programs¹

This standard is issued under the fixed designation D6312; the number immediately following the designation indicates the year of original adoption or, in the case of revision, the year of last revision. A number in parentheses indicates the year of last reapproval. A superscript epsilon (ϵ) indicates an editorial change since the last revision or reapproval.

^{ε1} NOTE—Editorial changes were made throughout in February 2012.

1. Scope

1.1 This guide covers the context of groundwater monitoring at waste disposal facilities. Regulations have required statistical methods as the basis for investigating potential environmental impact due to waste disposal facility operation. Owner/operators must perform a statistical analysis on a quarterly or semiannual basis. A statistical test is performed on each of many constituents (for example, 10 to 50 or more) for each of many wells (5 to 100 or more). The result is potentially hundreds, and in some cases, a thousand or more statistical comparisons performed on each monitoring event. Even if the false positive rate for a single test is small (for example, 1 %), the possibility of failing at least one test on any monitoring event is virtually guaranteed. This assumes you have done the correct statistic in the first place.

1.2 This guide is intended to assist regulators and industry in developing statistically powerful groundwater monitoring programs for waste disposal facilities. The purpose of this guide is to detect a potential groundwater impact from the facility at the earliest possible time while simultaneously minimizing the probability of falsely concluding that the facility has impacted groundwater when it has not.

1.3 When applied inappropriately, existing regulation and guidance on statistical approaches to groundwater monitoring often suffer from a lack of statistical clarity and often implement methods that will either fail to detect contamination when it is present (a false negative result) or conclude that the facility has impacted groundwater when it has not (a false positive). Historical approaches to this problem have often sacrificed one type of error to maintain control over the other. For example, some regulatory approaches err on the side of conservatism, keeping false negative rates near zero while false positive rates approach 100 %.

1.4 The purpose of this guide is to illustrate a statistical groundwater monitoring strategy that minimizes both false negative and false positive rates without sacrificing one for the other.

1.5 This guide is applicable to statistical aspects of groundwater detection monitoring for hazardous and municipal solid waste disposal facilities.

1.6 It is of critical importance to realize that on the basis of a statistical analysis alone, it can never be concluded that a waste disposal facility has impacted groundwater. A statistically significant exceedance over background levels indicates that the new measurement in a particular monitoring well for a particular constituent is inconsistent with chance expectations based on the available sample of background measurements.

1.7 Similarly, statistical methods can never overcome limitations of a groundwater monitoring network that might arise due to poor site characterization, well installation and location, sampling, or analysis.

1.8 It is noted that when justified, intra-well comparisons are generally preferable to their inter-well counterparts because they completely eliminate the spatial component of variability. Due to the absence of spatial variability, the uncertainty in measured concentrations is decreased, making intra-well comparisons more sensitive to real releases (that is, false negatives) and false positive results due to spatial variability are completely eliminated.

1.9 Finally, it should be noted that the statistical methods described here are not the only valid methods for analysis of groundwater monitoring data. They are, however, currently the most useful from the perspective of balancing site-wide false positive and false negative rates at nominal levels. A more complete review of this topic and the associated literature is presented by Gibbons (1).²

1.10 The values stated in both inch-pound and SI units are to be regarded as the standard. The values given in parentheses are for information only.

¹ This guide is under the jurisdiction of ASTM Committee D18 on Soil and Rock and is the direct responsibility of Subcommittee D18.21 on Groundwater and Vadose Zone Investigations.

Current edition approved Feb. 15, 2012. Published December 2012. Originally approved in 1998. Last previous edition approved in 2005 as D6312 – 98 (2005). DOI: 10.1520/D6312-98R12E01.

² The boldface numbers given in parentheses refer to a list of references at the end of the text.

1.11 *This standard does not purport to address all of the safety concerns, if any, associated with its use. It is the responsibility of the user of this standard to establish appropriate safety and health practices and determine the applicability of regulatory limitations prior to use.*

1.12 *This guide offers an organized collection of information or a series of options and does not recommend a specific course of action. This document cannot replace education or experience and should be used in conjunction with professional judgment. Not all aspects of this guide may be applicable in all circumstances. This ASTM standard is not intended to represent or replace the standard of care by which the adequacy of a given professional service must be judged, nor should this document be applied without consideration of a project's many unique aspects. The word "Standard" in the title of this document means only that the document has been approved through the ASTM consensus process.*

2. Referenced Documents

2.1 ASTM Standards:³

D653 Terminology Relating to Soil, Rock, and Contained Fluids

3. Terminology

3.1 Definitions:

3.1.1 For definitions of common technical terms in this standard, refer to Terminology **D653**.

3.2 Definitions of Terms Specific to This Standard:

3.2.1 *assessment monitoring program, n*—groundwater monitoring that is intended to determine the nature and extent of a potential site impact following a verified statistically significant exceedance of the detection monitoring program.

3.2.2 *combined Shewhart (CUSUM) control chart, n*—a statistical method for intra-well comparisons that is sensitive to both immediate and gradual releases.

3.2.3 *detection limit (DL), n*—the true concentration at which there is a specified level of confidence (for example, 99 % confidence) that the analyte is present in the sample (2).

3.2.4 *detection monitoring program, n*—groundwater monitoring that is intended to detect a potential impact from a facility by testing for statistically significant changes in geochemistry in a downgradient monitoring well relative to background levels.

3.2.5 *intra-well comparisons, n*—a comparison of one or more new monitoring measurements to statistics computed from a sample of historical measurements from that same well.

3.2.6 *inter-well comparisons, n*—a comparison of a new monitoring measurement to statistics computed from a sample of background measurements (for example, upgradient versus downgradient comparisons).

3.2.7 *prediction interval or limit, n*—a statistical estimate of the minimum or maximum concentration, or both, that will

contain the next series of k measurements with a specified level of confidence (for example, 99 % confidence) based on a sample of n background measurements.

3.2.8 *quantification limit (QL), n*—the concentration at which quantitative determinations of an analyte's concentration in the sample can be reliably made during routine laboratory operating conditions (3).

3.3 Definitions of Terms Specific to This Standard:

3.3.1 *false negative rate, n*—in detection monitoring, the rate at which the statistical procedure does not indicate possible contamination when contamination is present.

3.3.2 *false positive rate, n*—in detection monitoring, the rate at which the statistical procedure indicates possible contamination when none is present.

3.3.3 *nonparametric, adj*—a term referring to a statistical technique in which the distribution of the constituent in the population is unknown and is not restricted to be of a specified form.

3.3.4 *nonparametric prediction limit, n*—the largest (or second largest) of n background samples. The confidence level associated with the nonparametric prediction limit is a function of n and k .

3.3.5 *parametric, adj*—a term referring to a statistical technique in which the distribution of the constituent in the population is assumed to be known.

3.3.6 *verification resample, n*—in the event of an initial statistical exceedance, one (or more) new independent sample is collected and analyzed for that well and constituent which exceeded the original limit.

3.4 Symbols:

3.4.1 α —the false positive rate for an individual comparison (that is, one well and constituent).

3.4.2 α^* —the site-wide false positive rate covering all wells and constituents.

3.4.3 k —the number of future comparisons for a single monitoring event (for example, the number of downgradient monitoring wells multiplied by the number of constituents to be monitored) for which statistics are to be computed.

3.4.4 n —the number of background measurements.

3.4.5 σ^2 —the true population variance of a constituent.

3.4.6 s —the sample-based standard deviation of a constituent computed from n background measurements.

3.4.7 s^2 —the sample-based variance of a constituent computed from n background measurements.

3.4.8 μ —the true population mean of a constituent.

3.4.9 \bar{x} —the sample-based mean or average concentration of a constituent computed from n background measurements.

4. Summary of Guide

4.1 This guide is summarized in **Fig. 1**, which provides a flowchart illustrating the steps in developing a statistical monitoring plan. The monitoring plan is based either on background versus monitoring well comparisons (for example, upgradient versus downgradient comparisons or intra-well comparisons, or a combination of both). **Fig. 1** illustrates the

³ For referenced ASTM standards, visit the ASTM website, www.astm.org, or contact ASTM Customer Service at service@astm.org. For *Annual Book of ASTM Standards* volume information, refer to the standard's Document Summary page on the ASTM website.

Development of a Statistical Detection Monitoring Plan

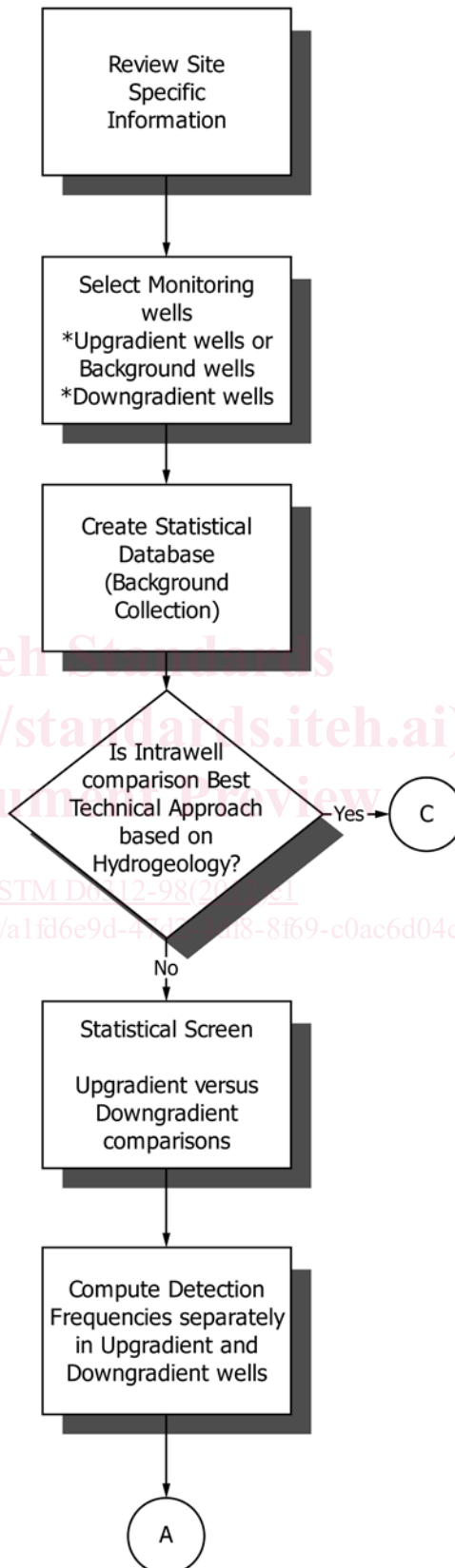


FIG. 1 Development of a Statistical Detection Monitoring Plan

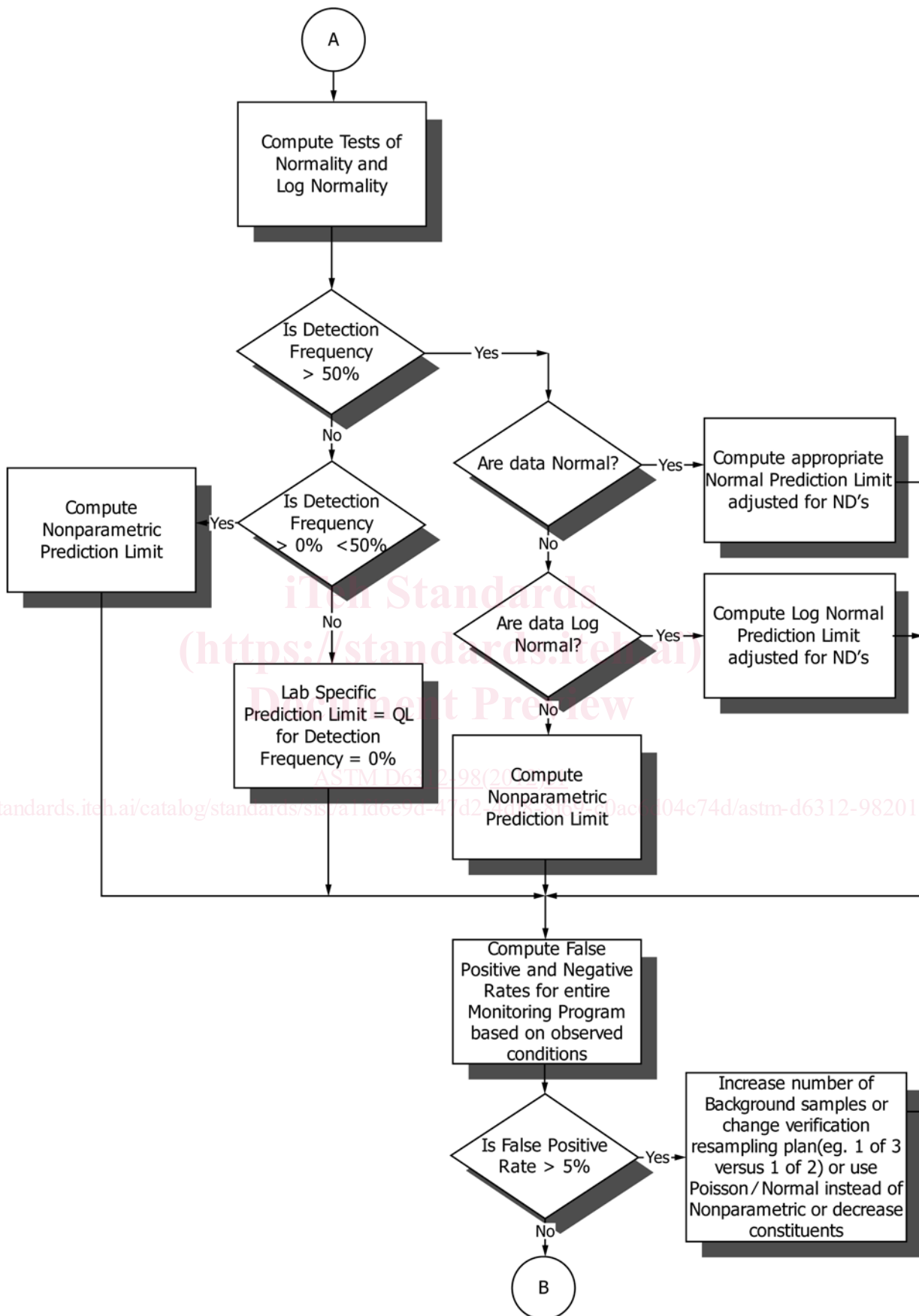


FIG. 1 (continued)

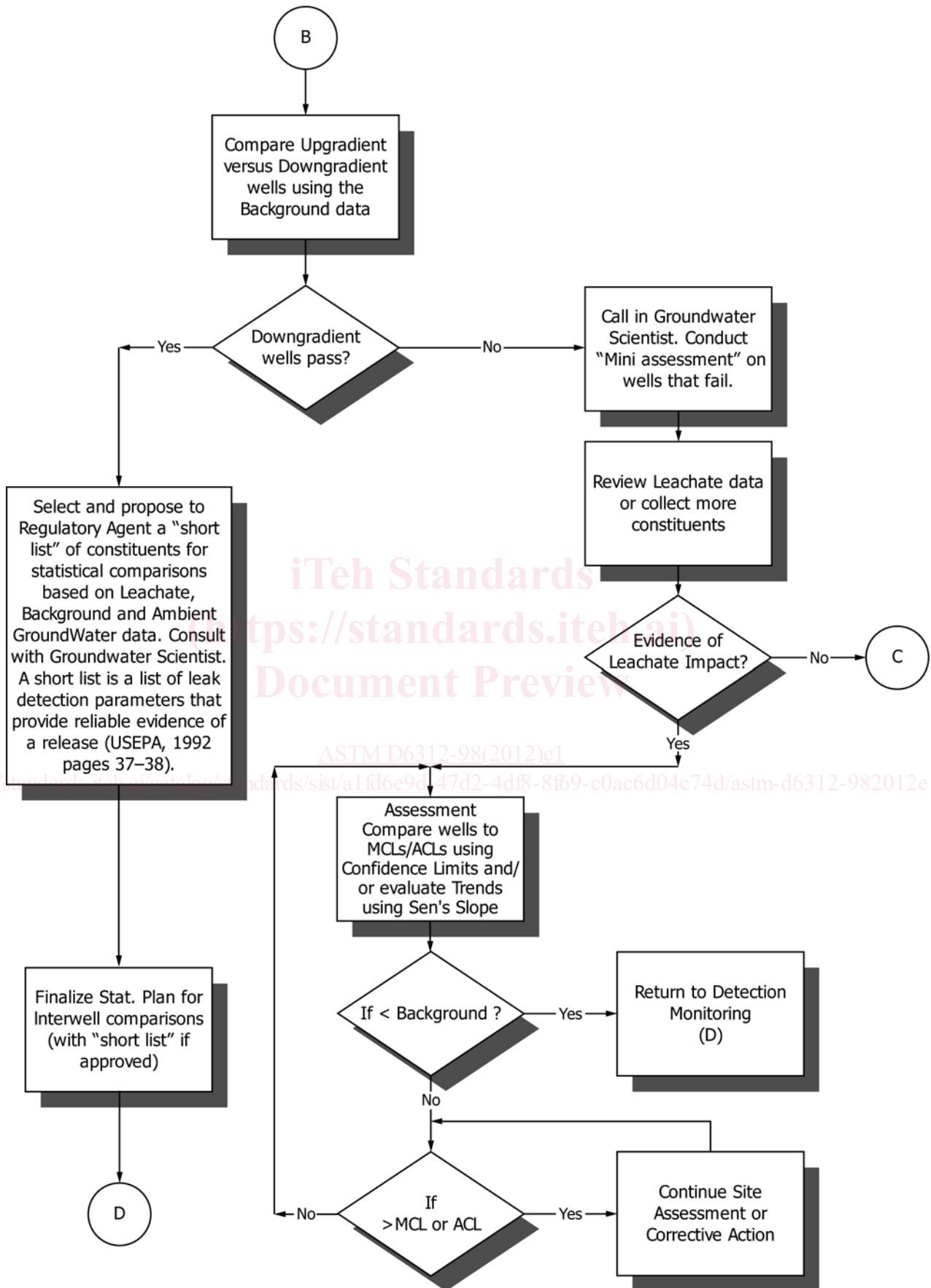


FIG. 1 (continued)

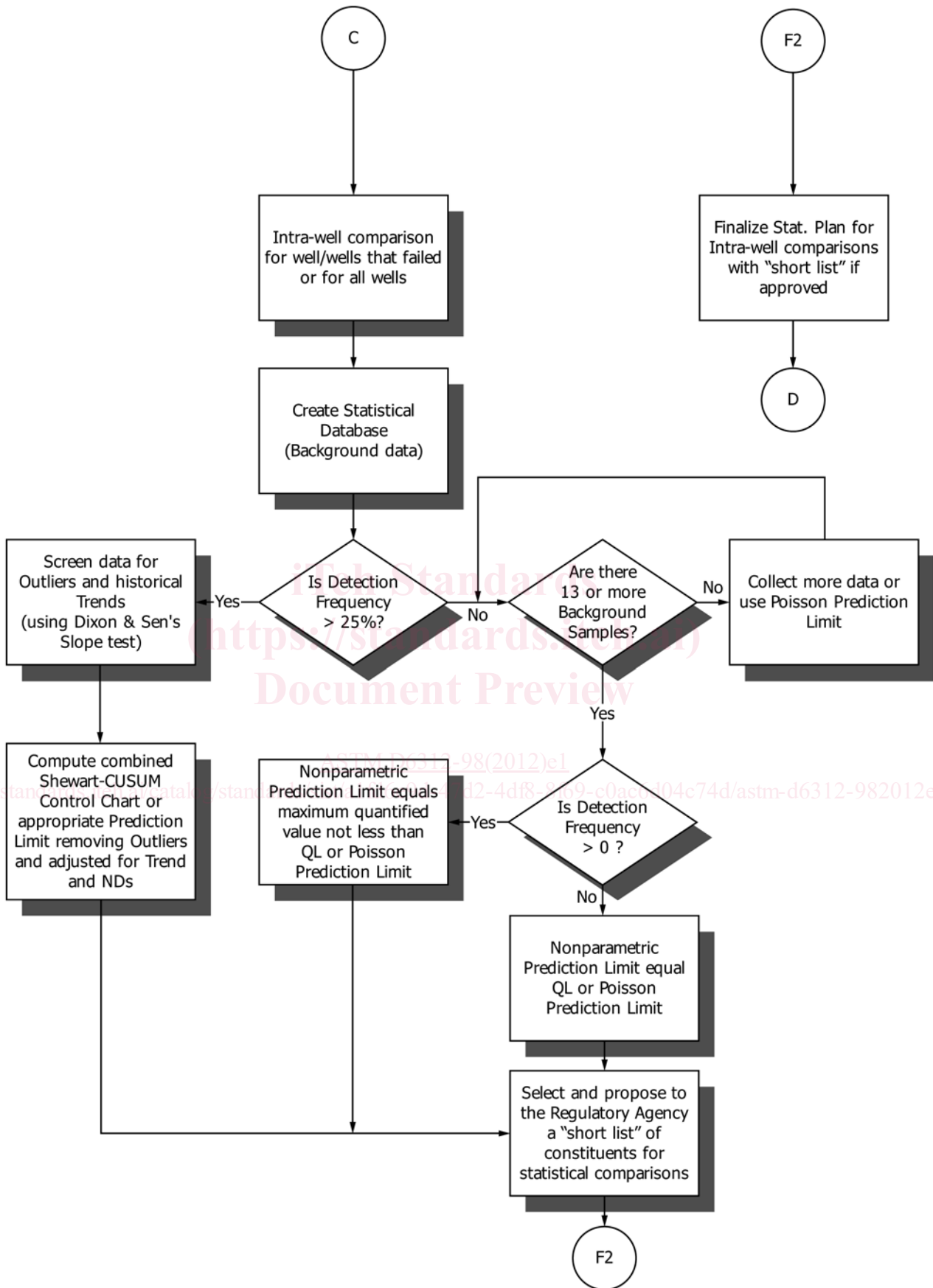


FIG. 1 (continued)