



International
Standard

ISO 6142-2

**Gas analysis — Preparation of
calibration gas mixtures —**

Part 2:

**Gravimetric method for Class II
mixtures**

*Analyse des gaz — Préparation des mélanges de gaz pour
étalonnage —*

Partie 2: Méthode gravimétrique pour les mélanges de Classe II

ISO 6142-2:2024

<https://standards.iteh.ai/catalog/standards/iso/061af4a3-42a6-4091-8947-836590a9fa7e/iso-6142-2-2024>

**First edition
2024-02**

iTeh Standards
(<https://standards.iteh.ai>)
Document Preview

ISO 6142-2:2024

<https://standards.iteh.ai/catalog/standards/iso/061af4a3-42a6-4091-8947-836590a9fa7e/iso-6142-2-2024>



COPYRIGHT PROTECTED DOCUMENT

© ISO 2024

All rights reserved. Unless otherwise specified, or required in the context of its implementation, no part of this publication may be reproduced or utilized otherwise in any form or by any means, electronic or mechanical, including photocopying, or posting on the internet or an intranet, without prior written permission. Permission can be requested from either ISO at the address below or ISO's member body in the country of the requester.

ISO copyright office
CP 401 • Ch. de Blandonnet 8
CH-1214 Vernier, Geneva
Phone: +41 22 749 01 11
Email: copyright@iso.org
Website: www.iso.org

Published in Switzerland

Contents

Page

Foreword	iv
Introduction	v
1 Scope	1
2 Normative references	1
3 Terms and definitions	1
4 Symbols	2
5 Principle	2
6 Individual cylinder production	3
6.1 General	3
6.2 Estimation of generic uncertainty of the calibration gas mixtures	4
7 Batch production	4
7.1 General	4
7.2 Batch filling process	4
7.3 Calculation of the measurement uncertainty	6
8 Requirements for repeated verifications and document control	6
9 Defining ranges of components and amount fractions by category of mixtures	6
10 Preparation of certificate	7
Annex A (informative) Practical example of the calculation of the generic uncertainty - Individual filling	8
Annex B (informative) A practical example of the calculation of the generic uncertainty - Batch filling	10
Annex C (informative) Example mixture categories	13
Bibliography	16

ISO 6142-2:2024

<https://standards.iteh.ai/catalog/standards/iso/061af4a3-42a6-4091-8947-836590a9fa7e/iso-6142-2-2024>

Foreword

ISO (the International Organization for Standardization) is a worldwide federation of national standards bodies (ISO member bodies). The work of preparing International Standards is normally carried out through ISO technical committees. Each member body interested in a subject for which a technical committee has been established has the right to be represented on that committee. International organizations, governmental and non-governmental, in liaison with ISO, also take part in the work. ISO collaborates closely with the International Electrotechnical Commission (IEC) on all matters of electrotechnical standardization.

The procedures used to develop this document and those intended for its further maintenance are described in the ISO/IEC Directives, Part 1. In particular, the different approval criteria needed for the different types of ISO document should be noted. This document was drafted in accordance with the editorial rules of the ISO/IEC Directives, Part 2 (see www.iso.org/directives).

ISO draws attention to the possibility that the implementation of this document may involve the use of (a) patent(s). ISO takes no position concerning the evidence, validity or applicability of any claimed patent rights in respect thereof. As of the date of publication of this document, ISO had not received notice of (a) patent(s) which may be required to implement this document. However, implementers are cautioned that this may not represent the latest information, which may be obtained from the patent database available at www.iso.org/patents. ISO shall not be held responsible for identifying any or all such patent rights.

Any trade name used in this document is information given for the convenience of users and does not constitute an endorsement.

For an explanation of the voluntary nature of standards, the meaning of ISO specific terms and expressions related to conformity assessment, as well as information about ISO's adherence to the World Trade Organization (WTO) principles in the Technical Barriers to Trade (TBT), see www.iso.org/iso/foreword.html.

This document was prepared by Technical Committee ISO/TC 158, *Analysis of gases*.

A list of all parts in the ISO 6142 series can be found on the ISO website

Any feedback or questions on this document should be directed to the user's national standards body. A complete listing of these bodies can be found at www.iso.org/members.html.

ISO 6142-2:2024

<https://standards.iteh.ai/catalog/standards/iso/061af4a3-42a6-4091-8947-836590a9fa7e/iso-6142-2-2024>

Introduction

The revision of ISO 6142 was initiated to provide better guidance to the users of this document especially with respect to quality assurance measures and laboratory accreditation. In preparing the revision, it was decided to accommodate two types of calibration gas mixtures with different levels of quality assurance and with different levels of measurement uncertainty. The difference in the two classes can be summarized as follows.

Class I type calibration gas mixtures are prepared according to ISO 6142-1. The mixtures are individually verified. Provided rigorous and comprehensive quality assurance and quality control procedures are adopted during the preparation and verification of these mixtures, measurement uncertainties can be achieved that are substantially smaller than by any other preparation method.

Class II calibration gas mixtures may be prepared individually or in batches and certified with an associate generic measurement uncertainty.

Individually prepared Class II calibration gas mixtures are produced in a similar manner to Class I calibration gas mixtures, but these mixtures are not individually verified. Verification of individually prepared Class II calibration gas mixtures is based on periodic verification checks.

Class II type calibration gas mixtures, which are produced in batches, extend the principles of gravimetric preparation described in ISO 6142-1.

For mixtures containing identical components and nominally identical amount-of-substance fractions, Class II type calibration gas mixtures will usually have amount-of-substance fractions with larger measurement uncertainties than their Class I counterparts.

This document was developed to be in agreement with ISO 6142-1.

iteh Standards
(<https://standards.iteh.ai>)
Document Preview

ISO 6142-2:2024

<https://standards.iteh.ai/catalog/standards/iso/061af4a3-42a6-4091-8947-836590a9fa7e/iso-6142-2-2024>

Gas analysis — Preparation of calibration gas mixtures —

Part 2:

Gravimetric method for Class II mixtures

1 Scope

This document describes the static gravimetric preparation of Class II calibration gas mixtures and describes a method for calculating the measurement uncertainty associated with the amount fraction of each component. In addition to all of the contributions to the measurement uncertainty mentioned in ISO 6142-1, this document also considers the uncertainty resulting from the validation process for Class II mixtures that are not individually verified, as is the case for Class I mixtures.

This document extends the uncertainty evaluation described in ISO 6142-1 to include the effects of batch production and the verification process. It provides guidance on how to derive an uncertainty budget that is representative of a particular category of mixtures.

Methods for the batch production of more than one mixture in a single process are included in this document.

This document is only applicable to mixtures of gaseous or totally vaporized components, which can be introduced into the cylinder in the gaseous or liquid state. Both binary and multi-component gas mixtures are covered by this document.

This document is limited to non-reactive molecules/components that are greater than or equal to an amount fraction of 100 $\mu\text{mol/mol}$. This document excludes components that react with each other, or with common mixture contaminants such as water vapour or oxygen or react with the inner surface of the cylinder and valve in the form of absorption or adsorption.

2 Normative references

The following documents are referred to in the text in such a way that some or all of their content constitutes requirements of this document. For dated references, only the edition cited applies. For undated references, the latest edition of the referenced document (including any amendments) applies.

ISO 6142-1:2015, *Gas analysis — Preparation of calibration gas mixtures — Part 1: Gravimetric method for Class I mixtures*

ISO 6141, *Gas analysis — Contents of certificates for calibration gas mixtures*

ISO 7504, *Gas analysis — Vocabulary*

3 Terms and definitions

For the purposes of this document, the terms and definitions given in ISO 7504 and the following apply.

ISO and IEC maintain terminology databases for use in standardization at the following addresses:

- ISO Online browsing platform: available at <https://www.iso.org/obp>
- IEC Electropedia: available at <https://www.electropedia.org/>

3.1

generic uncertainty

uncertainty assigned to the amount fraction of a component of a *category of mixtures* (3.2), representative for all mixtures belonging to such a category

Note 1 to entry: This uncertainty is calculated from the validation process and not calculated individually for each cylinder. The generic uncertainty is usually expressed as a relative expanded uncertainty.

3.2

category of mixtures

group of mixtures that have the same filling method and analytical verification method and whose properties are sufficiently similar that the uncertainty of the composition of these mixtures can be described by a single *generic uncertainty* (3.1) statement

4 Symbols

n	number of replicates in the validation
$u(\dots)$	standard uncertainty (of the quantity in parentheses)
$U(\dots)$	expanded uncertainty (of the quantity in parentheses)
$u(v_k)$	Standard uncertainty for the validation process for component k
y_k	amount fraction of component k
$y_{k,ver}$	amount fraction of the component k measured by analysis in course of validation of the mixture
$y_{k,prep}$	amount fraction of the component k calculated in the preparation of the mixture
v_k	difference between the amount fraction from preparation and verification for the component k $v_k = (y_{k,prep} - y_{k,ver})$
s_{bb}	between-unit component of variance from a homogeneity study, expressed as standard deviation.
MS_{among}	Mean Square between groups (from ANOVA)
MS_{within}	Mean Square within the groups (from ANOVA)
n_0	number of individual analyses performed on a component in a mixture
z	total number of mixtures in the batch
a	number of mixtures analysed from the total batch
y_{avg}	average amount of substance fraction value for component in the batch
A	Analytical results expressed as instrumental response
$U_{rel}(\dots)$	relative expanded uncertainty (of the quantity in parentheses)

5 Principle

Class II calibration gas mixtures are prepared using the principles of preparation detailed in ISO 6142-1, and mixtures can be prepared individually or by batch production using a validated gravimetric process; however, the individual verification of the final mixture against independent reference gas mixtures is not required.

The process for the gravimetric method of preparing Class II calibration gas mixtures with individual preparation is given as a flowchart in ISO 6142-1:2015, Figure 1. Class II mixtures are typically mixtures that are prepared on a frequent basis and by a defined preparation procedure.

In the validation process for this method of preparation, the uncertainty of the calibration gas mixtures is evaluated as described in ISO 6142-1:2015, Clause 11. Statistical process control of the validation process is required. For a number of frequently produced mixtures, the average of the calculated uncertainties is then used to derive a generic uncertainty for a defined range of amount fractions and compositions. Further details are given in [Clause 6](#) and [Clause 9](#).

The filling of calibration gas mixtures in a batch is described in the [Clause 7](#) with a description of the filling process and the uncertainty calculation.

The continued validity of this generic uncertainty shall be periodically re-confirmed following the procedures described in [Clause 8](#).

6 Individual cylinder production

6.1 General

The process for the individual preparation of Class II calibration gas mixture is shown in [Figure 1](#).

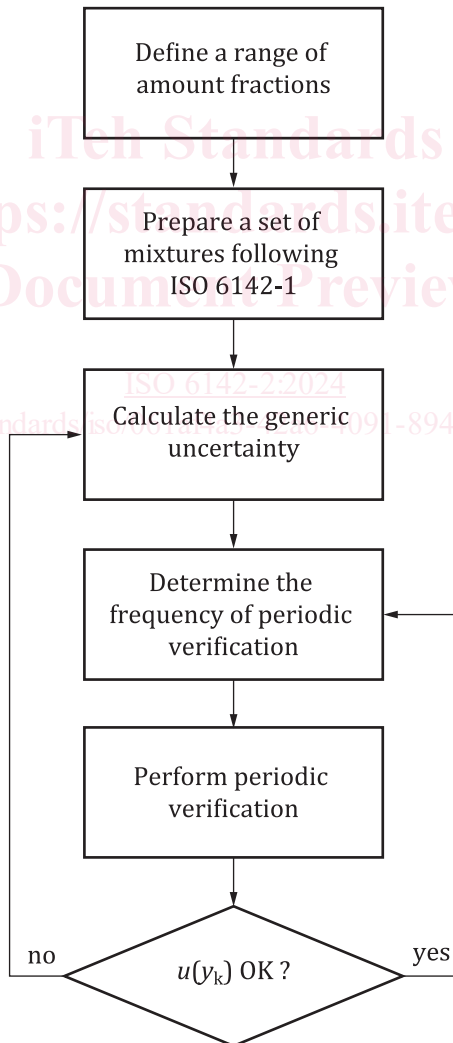


Figure 1 — Scheme for the gravimetric method of preparing Class II calibration gas mixtures, individual preparation

6.2 Estimation of generic uncertainty of the calibration gas mixtures

For each defined range of components and amount of substance, a set of preferably $n = 10$, but at least 6 gravimetric mixtures shall be prepared and verified in accordance with ISO 6142-1 under specified conditions.

The results of the individual verification shall be reviewed against the following criteria:

- all mixtures shall pass the verification criterion described in ISO 6142-1:2015, 10.2;
- the standard deviation of the mean of the expanded uncertainties shall be lower than a half of the intended expanded generic uncertainty;
- in the generic uncertainty an additional uncertainty component from the validation process, $u(v_k)$ is added, see [Formula \(1\)](#):

$$u(v_k)^2 = \frac{1}{n-1} \sum_{i=1}^n (v_{k,i} - \overline{v_k})^2 \quad (1)$$

Where v_k denotes the difference between the amount fraction of the component k calculated from preparation and verification and n is the number of mixtures involved in the validation process.

An alternate approach is the use of a model from meta-analysis, such as the DerSimonian-Laird model.

The combined standard uncertainty of the amount fraction of component k in the final mixture shall be calculated using Formula (9) in ISO 6142-1 amended as follows:

$$u_c(y_k) = \frac{1}{2} \sqrt{u^2(y_{k, \text{prep}}) + u^2(y_{k, \text{ver}}) + (|y_{k, \text{prep}} - y_{k, \text{ver}}|)^2 + u(v_k)^2} \quad (2)$$

The generic uncertainty shall be calculated from the mean of the expanded uncertainties and shall be rounded up to a value with typically 2 significant figures.

Examples of the estimation of a generic uncertainty are given in [Annex A](#).

Information on when the estimation of the generic uncertainty should be repeated is given in [Clause 8](#).

<https://standards.iteh.ai/catalog/standards/iso/061af4a3-42a6-4091-8947-836590a9fa7e/iso-6142-2-2024>

7 Batch production

7.1 General

Batch filling offers productivity advantages over individual gravimetric step-by-step filling. The one-way ANOVA is used to determine the between bottle variation ($s_{bb,k}$) of the batch filling process for the component of interest k . This is then used to calculate the batch uncertainty by adding the s_{bb} value to the gravimetric uncertainty of the cylinder on the balance. Further guidance on performing a one-way ANOVA is described in ISO Guide 35^[1].

7.2 Batch filling process

The gravimetric production of gas mixtures with nominally identical composition can be achieved by preparing a batch of identical cylinders and connecting the cylinders to a filling manifold and placing one cylinder on a high resolution, high-capacity balance. The addition of the component gases shall be controlled by the measurement and recording of the masses of gases added to the cylinder located on the balance.

The cylinder shall be weighed after each addition of gas to determine the mass of each component gas added into the controlling cylinder located on the balance. Specifically:

- connect all cylinders to be filled to the manifold and place one cylinder on the balance;