



Designation: B 114 – 90 (Reapproved 2001)

## Standard Test Method for Temperature-Resistance Constants of Sheet Materials for Shunts and Precision Resistors<sup>1</sup>

This standard is issued under the fixed designation B 114; the number immediately following the designation indicates the year of original adoption or, in the case of revision, the year of last revision. A number in parentheses indicates the year of last reapproval. A superscript epsilon ( $\epsilon$ ) indicates an editorial change since the last revision or reapproval.

### 1. Scope

1.1 This test method covers the determination of the change of resistance with temperature of sheet materials used for shunts and precision resistors for electrical apparatus. It is applicable to materials normally used in the temperature range of from 0 to 80°C.

1.2 The values stated in inch-pound units are to be regarded as the standard. The metric equivalents of inch-pound units may be approximate.

1.3 *This standard does not purport to address all of the safety concerns, if any, associated with its use. It is the responsibility of the user of this standard to establish appropriate safety and health practices and determine the applicability of regulatory limitations prior to use.*

### 2. Referenced Documents

#### 2.1 ASTM Standards:

B 84 Test Method for Temperature-Resistance Constants of Alloy Wires for Precision Resistors<sup>2</sup>

### 3. Significance and Use

3.1 This test method covers the determination of the change of resistance with temperature for precision resistors and shunts made from sheet materials.

3.2 Materials normally used in the temperature range from 0 to 80°C may be tested using this test method.

### 4. Test Specimen

4.1 The test specimen shall be of such dimensions that its electrical resistance can be measured to the required accuracy.

NOTE 1—Measurements are simplified if the specimen has a resistance of 0.01  $\Omega$  or more. The specimen may be bent in the form of a “U” to facilitate handling.

### 5. Terminals

5.1 A current terminal shall be attached to each end of the specimen. These terminals shall be either soldered or clamped

in such a manner that there will be no change of current distribution in the specimen during the test.

5.2 Potential terminals, one at each end, shall be located at a distance not less than two times the width of the specimen from the current terminals. These terminals shall be attached at the center of the width of the specimen either by soldering to ears cut out of the specimen (Note 2) as shown in Fig. 1 or by clamps, each of which presses a single sharp point into the material.

NOTE 2—The ears shall be cut so that they are about ½ in. (12.7 mm) in length and ⅛ in. (3.2 mm) in width. The cut shall be clean and free from slivers at the junction of the ear and the specimen. Before cutting the ears, it is desirable to drill two small holes with a sharp drill where the ear will be jointed to the specimen.

### 6. Preliminary Treatment for Manganin Samples

6.1 In the case of manganin materials, after all the mechanical work has been finished, the specimen shall be given one heat treatment of 48 h at 140  $\pm$  5.0°C and then cooled to room temperature.

6.2 The specimen shall then be given a dip in a nitric acid solution (50 %) to remove the copper film (which can be judged by the color of the specimen) and then thoroughly scrubbed in running water.

### 7. Apparatus

7.1 The apparatus for making the test shall consist of one or more baths for maintaining the specimen at the desired temperature, thermometers for measuring the temperatures of the baths, and suitable means for measuring the resistance of the specimen.

### 8. Baths

8.1 Each bath shall consist of chemically neutral oil. The oil shall be of such quantity and so well stirred that the temperature in the region occupied by the specimen and the thermometer shall be uniform within 0.2°C for any temperature between 0 and 80°C.

8.2 In an automatically controlled bath, the temperature of the bath at any time during the test at any temperature level shall not differ from its mean temperature by more than 0.2°C. In a manually controlled bath, the rate of change of temperature shall not exceed 0.2°C/min.

<sup>1</sup> This test method is under the jurisdiction of ASTM Committee B02 on Nonferrous Metals and Alloys and is the direct responsibility of Subcommittee B02.10 on Thermostat Metals.

Current edition approved May 25, 1990. Published January 1991. Originally published as B 114 – 38. Last previous edition B 114 – 45 (1981)  <sup>$\epsilon$ 1</sup>.

<sup>2</sup> Annual Book of ASTM Standards, Vol 03.04.

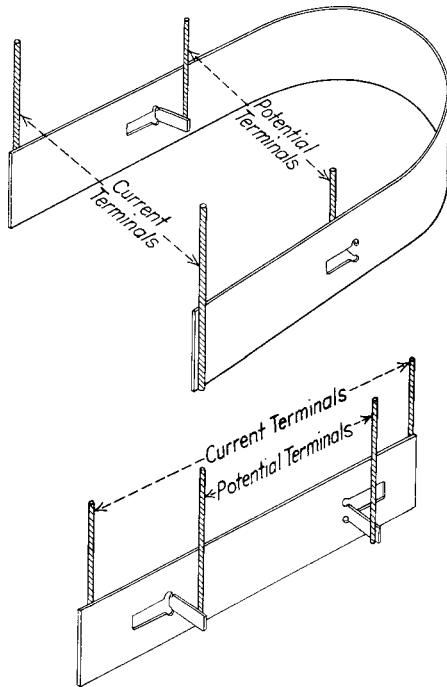


FIG. 1 Test Specimen Showing Terminal Connections

### 9. Temperature Measurement

9.1 The temperature shall be measured either with a laboratory type of mercurial thermometer or a resistance thermometer. The thermometer shall have sufficient sensitivity to indicate temperature changes of 0.1°C. It shall be sufficiently accurate to measure temperature differences to 0.2°C in the range from 0 to 80°C.

### 10. Resistance Measurements

10.1 The change of resistance of the specimen shall be measured by apparatus capable of determining such changes to 0.001 % of the resistance of the specimen. A Kelvin double bridge, digital ohmmeter, or equivalent is suitable for this purpose (see Appendix X1).

10.2 The temperature of the measuring apparatus shall not change during the test by an amount sufficient to introduce appreciable errors in the results. With apparatus of good quality, a change of 1°C in its temperature is allowable.

10.3 The test current shall not be of such a magnitude as to produce an appreciable change in resistance of the specimen or measuring apparatus due to the heating effect. The dimensions of the specimen should be such that the power dissipated shall not exceed 0.02 W/in.<sup>2</sup> (0.003 W/cm<sup>2</sup>) of exposed surface. To determine experimentally that the test current is not too large, the specimen may be immersed in a bath having a temperature at which it has been found that the sheet has a relatively large change in resistance with temperature. The test current shall be applied and maintained until the resistance of the specimen has become constant. The current shall then be increased by 40 % and maintained at this value until the resistance has again become constant. If the change in resistance is greater than 0.001 %, the test current is too large and shall be reduced until the foregoing limitation is reached.

10.4 The measurements shall be made in such a way that the effects of thermoelectromotive forces and parasitic currents are avoided. When these effects are small, the resistance of the specimen when measured by a Kelvin bridge may be obtained by either of two methods. In the first method, the galvanometer zero shall be obtained with the galvanometer key open. The bridge shall be balanced both with the direct and reversed connection of the battery, the average value of the two results being the resistance of the specimen. In the second method, the zero of the galvanometer shall be obtained with the galvanometer key closed and the battery key open. A single balance of the bridge is then sufficient to obtain the resistance of the specimen.

### 11. Procedure

11.1 Connect the test specimen in the measuring circuit and submerge entirely in the oil bath. For a check on the constancy of the specimen, make an initial resistance measurement at room temperature. Raise the temperature of the oil bath or transfer the specimen to a bath maintained constant at the highest temperature at which measurements are to be made. When the test specimen has attained a constant resistance, record the reading of the measuring device and the temperature of the bath.

11.2 Decrease the temperature of the test specimen to the next lower temperatures either by cooling the bath and maintaining it constant at the next lower temperature, or by removing the specimen to another bath maintained at the lower temperature. When the resistance of the specimen has become constant, again make observations of resistance and temperature.

11.3 In this manner make a series of determinations of the change of resistance with temperature for the desired descending temperature range.

11.4 Take measurements at a sufficient number of temperatures to determine the characteristics of the material. In order to calculate a resistance-temperature equation, tests at three temperatures are required. If an independent check is to be made, make observations of at least five temperatures. For plotting a curve, six or more observations are generally made.

11.5 Note the temperature of the measuring apparatus at frequent intervals during the test of each specimen.

### 12. Resistance-Temperature Equation

12.1 Express the results in terms of the constants in an equation of the following form:

$$R_t = R_{25}[1 + \alpha(t - 25) + \beta(t - 25)^2] \quad (1)$$

where:

- $R_t$  = resistance of the specimen in ohms at temperature, °C,  $t$ ,
  - $R_{25}$  = resistance of the specimen in ohms at the standard temperature of 25°C,
  - $t$  = temperature of specimen, °C, and
  - $\alpha$  and  $\beta$  = temperature-resistance constants of the material.
- Temperature of maximum or minimum resistance  
= 25°C - ( $\alpha/2\beta$ )

NOTE 3—This equation will yield either a maximum or a minimum,